

ARKANSAS STATE HIGHWAY AND TRANSPORTATION DEPARTMENT



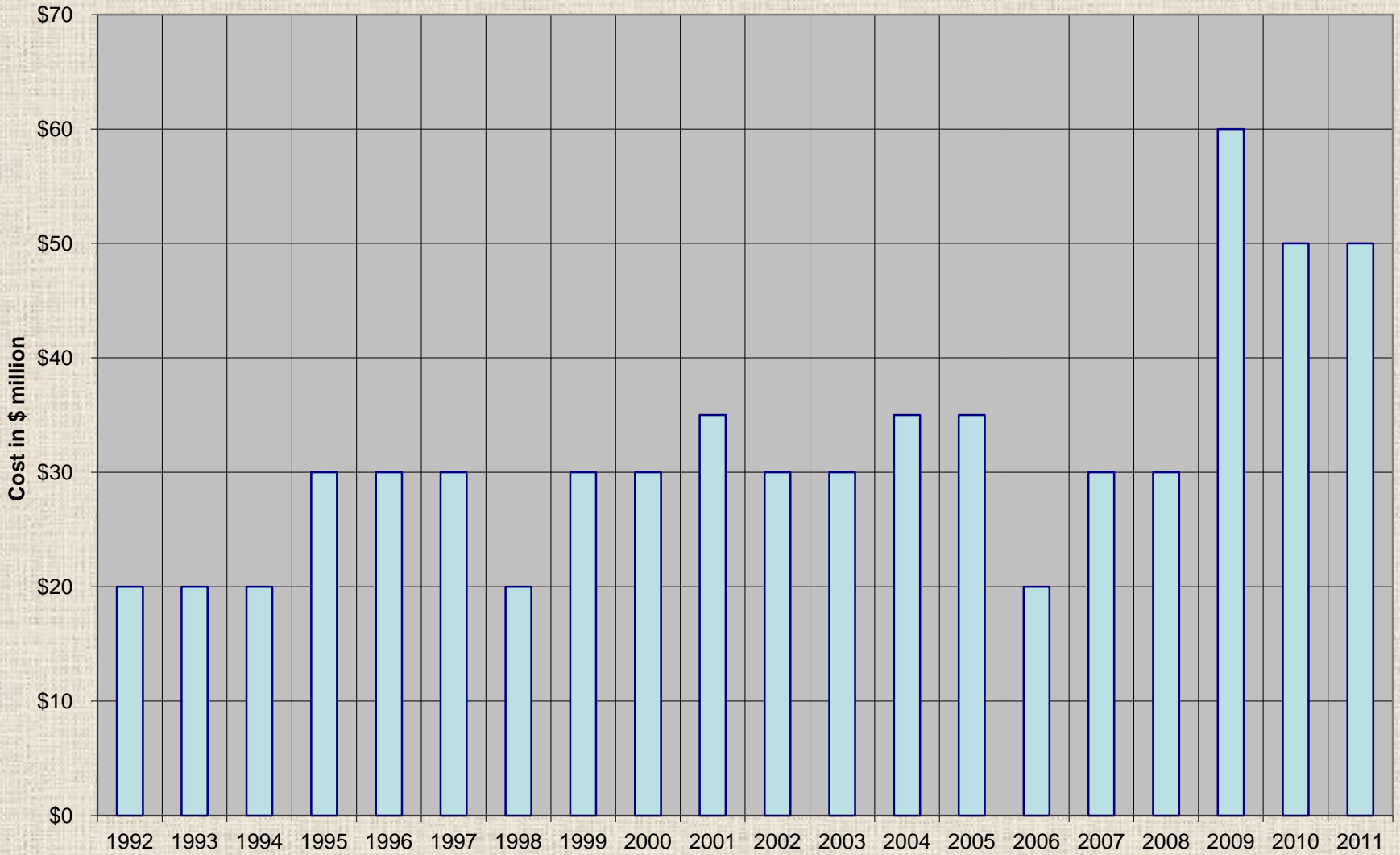
**AR Asphalt Pavement Assoc.
Quality Conference
January 5, 2012**

Quality Partners

**“Quality is not an act, it is a habit.”
- Aristotle**



Annual Overlay Program



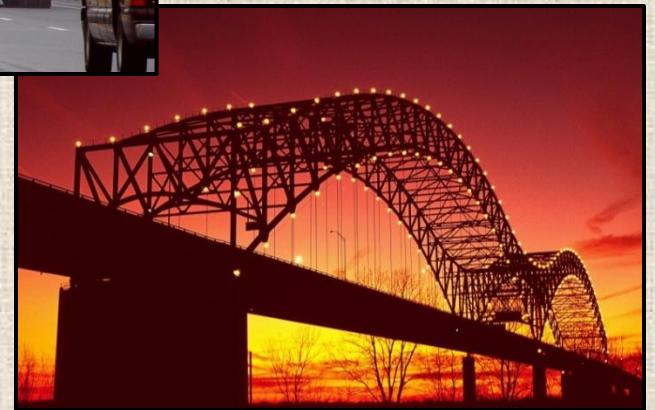
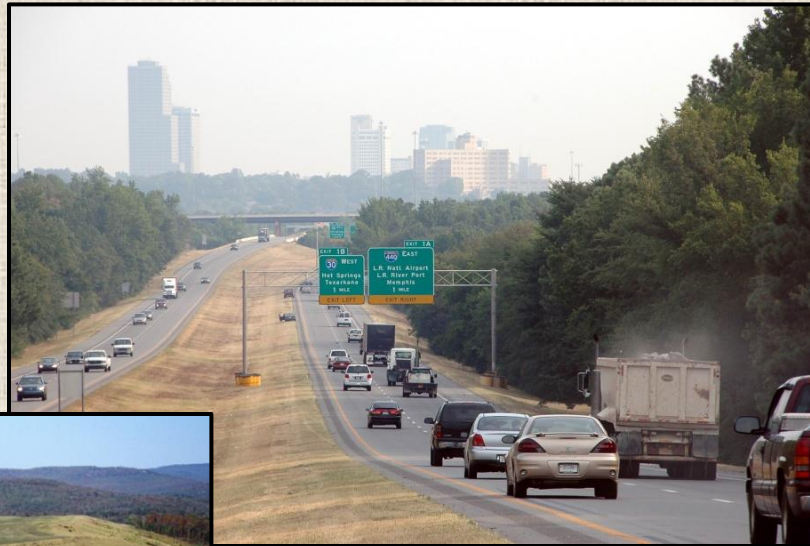
Appropriations

- **Consolidated and further Continuing Appropriations Act, 2012 signed by President on November 18, 2011**
 - ✓ **Appropriates funding through September 30, 2012 (remainder of Fiscal Year 2012)**
 - ✓ **4.6% reduction in funding (\$25 million reduction for Arkansas)**
 - ✓ **\$500 million for TIGER Grants**

Reauthorization

- **Moving Ahead for Progress in the 21st Century (MAP-21) approved by Senate EPW Committee**
 - ✓ **Senate Commerce, Science, and Transportation Committee has approved Safety, Freight and Research provisions**
 - ✓ **Senate Banking, Housing and Urban Affairs Committee must approve Transit section**
 - ✓ **Senate Finance Committee must “find” \$12 billion to fully fund MAP-21**
 - ✓ **Competitive grants**
- **No action from House until January-February**

2011 Interstate Rehabilitation Program



Timeline

April 2011

RFPs for design consultants

November 2011

Contract signed with Financial Advisor

December 2011

Agreements signed with 10 design firms

Currently

Assigning projects to design firms

Late 2012 (tentative)

Issue bonds and let first contracts

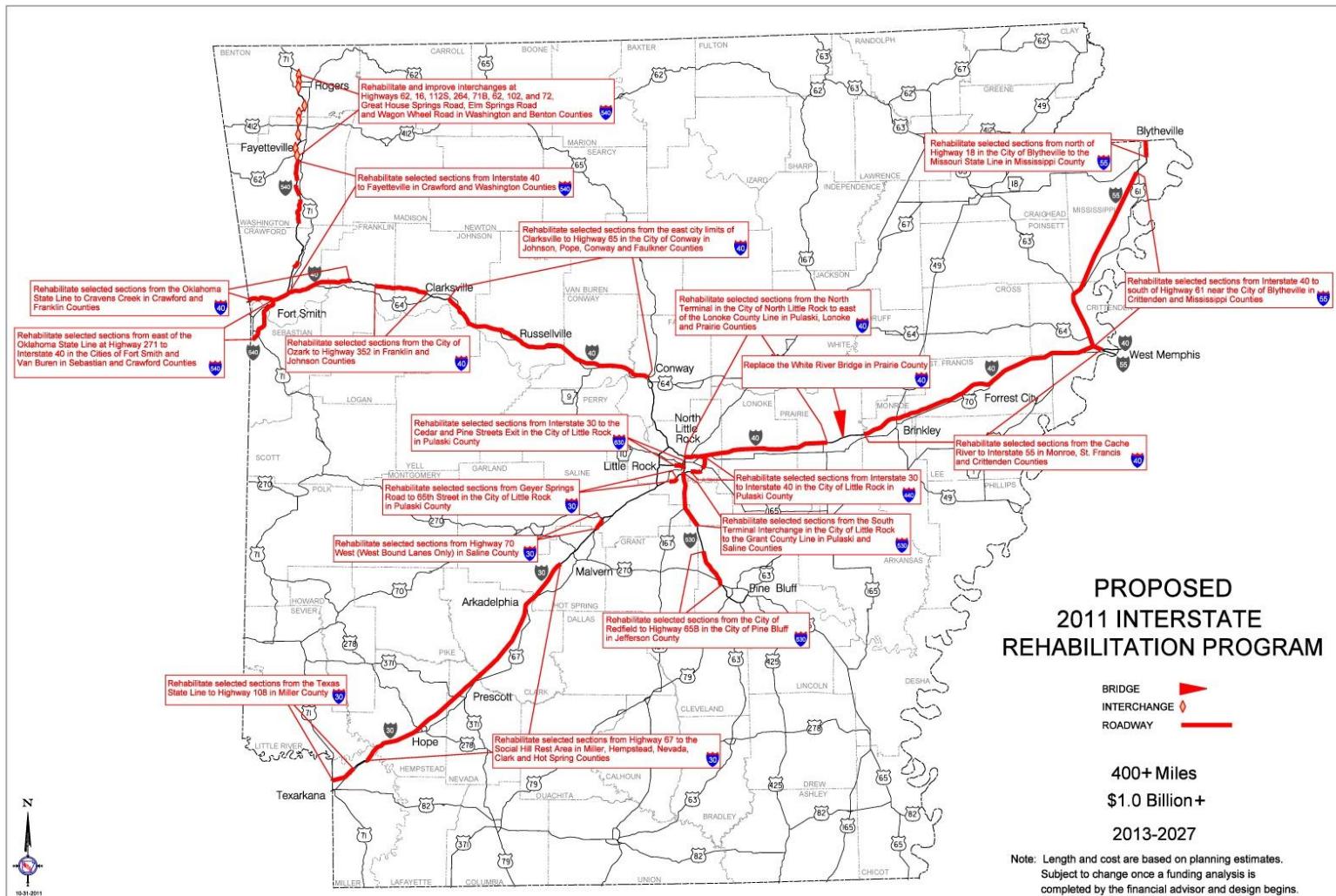


Types of Work

- Mill and Inlay
- Mill and Overlay
- Rubblize and Overlay
- Mill, Rubblize and Overlay
- Concrete Pavement Rehabilitation
- Concrete Reconstruction
- Interchanges Modifications



2011 Interstate Rehabilitation Program Map



INTERSTATE CONDITION

1999 PRE-IRP



2006 POST-IRP



2014



2020 WITH BONDS



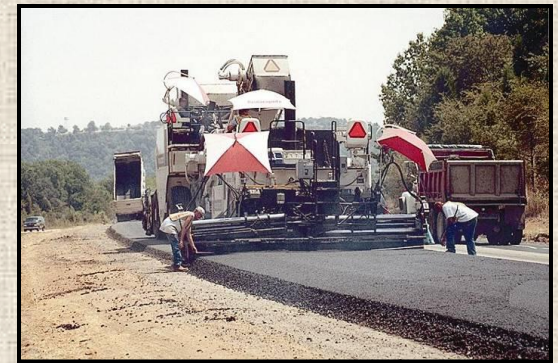
GOOD

FAIR

POOR

Half-Cent Sales Tax

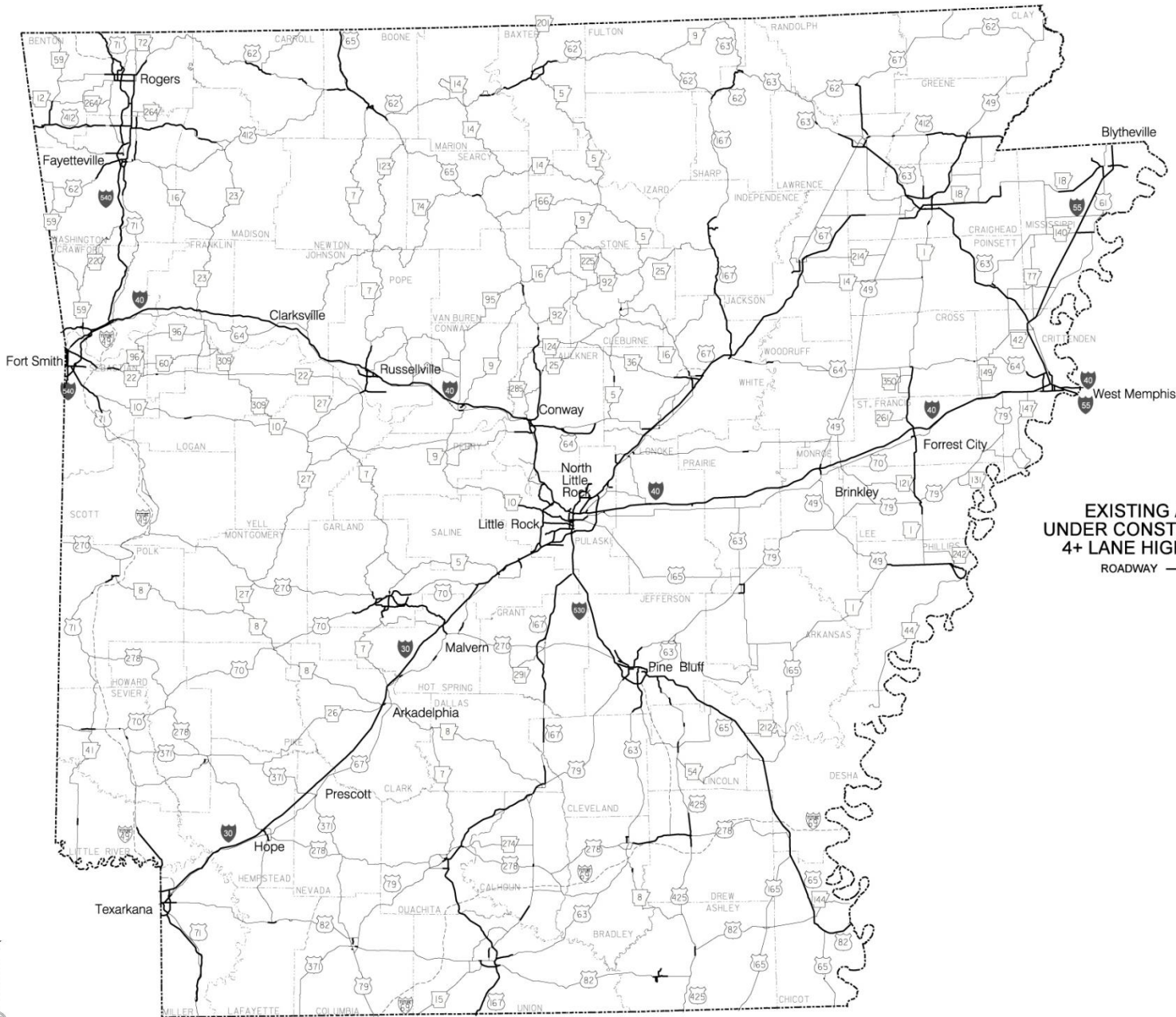
- November 2012 election ballot
- Temporary Increase
- \$1.3 Billion in general obligation bonds
- Four-lane highways



Half-Cent Sales Tax

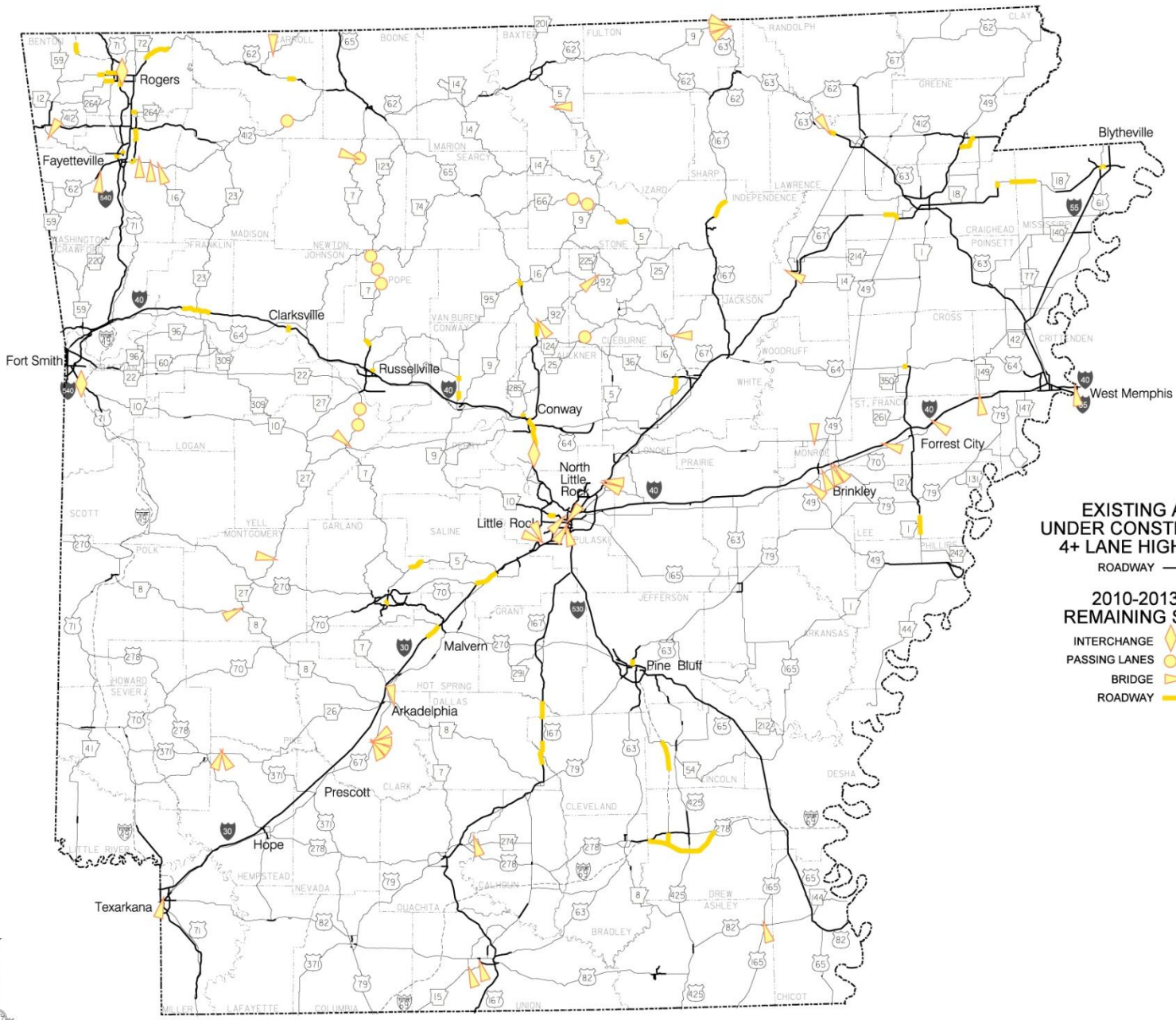
- Bond debt retired over 10 years
- Tax expires when the bonds are retired
- \$230M annually (\$160M/\$35M/\$35M)
- State Aid Street Fund for city streets
- \$1.8 Billion total program





**EXISTING AND
UNDER CONSTRUCTION
4+ LANE HIGHWAYS**
ROADWAY —

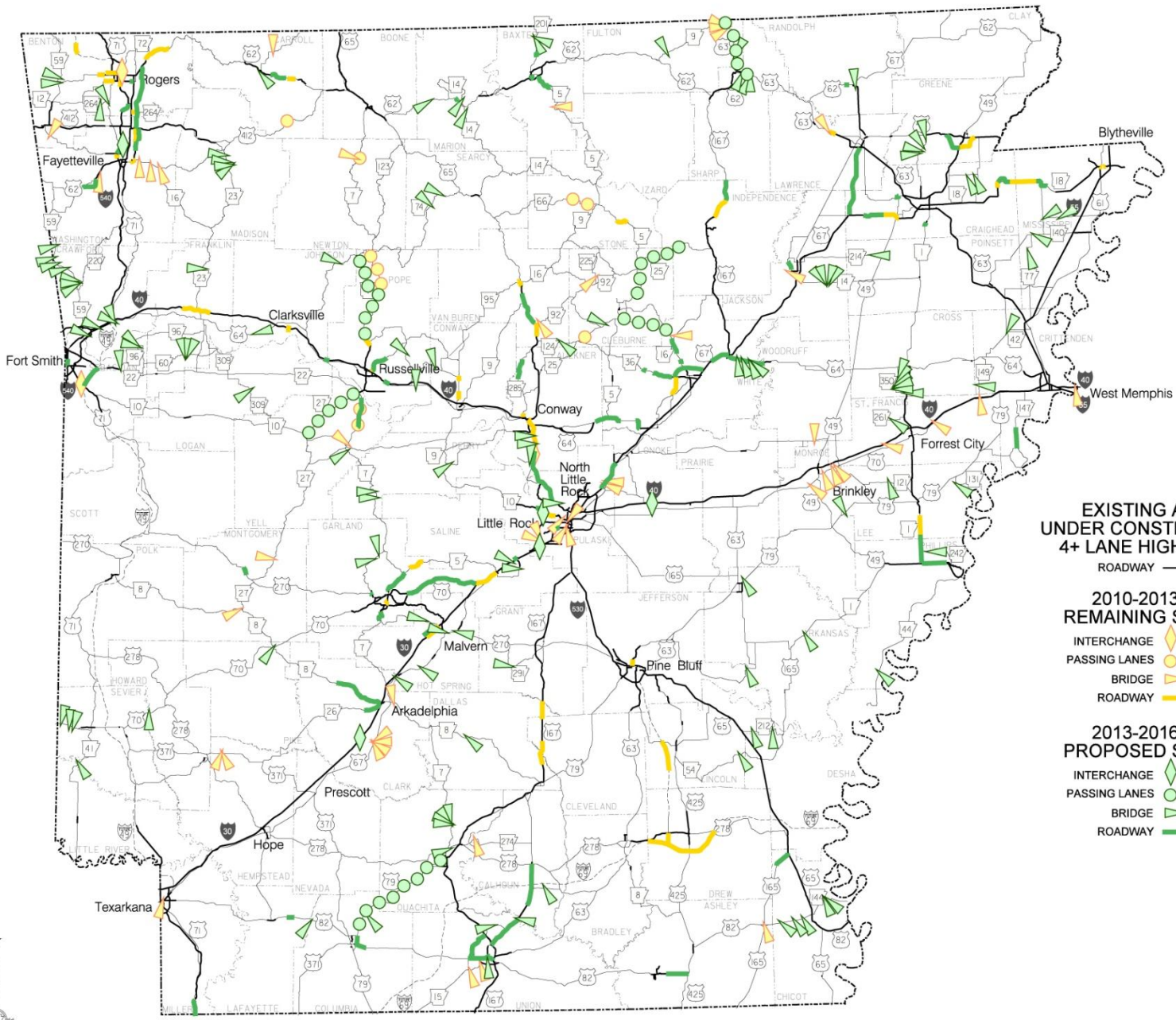




EXISTING AND UNDER CONSTRUCTION 4+ LANE HIGHWAYS

- ROADWAY —
- 2010-2013 REMAINING STIP
- INTERCHANGE 
- PASSING LANES 
- BRIDGE 
- ROADWAY 



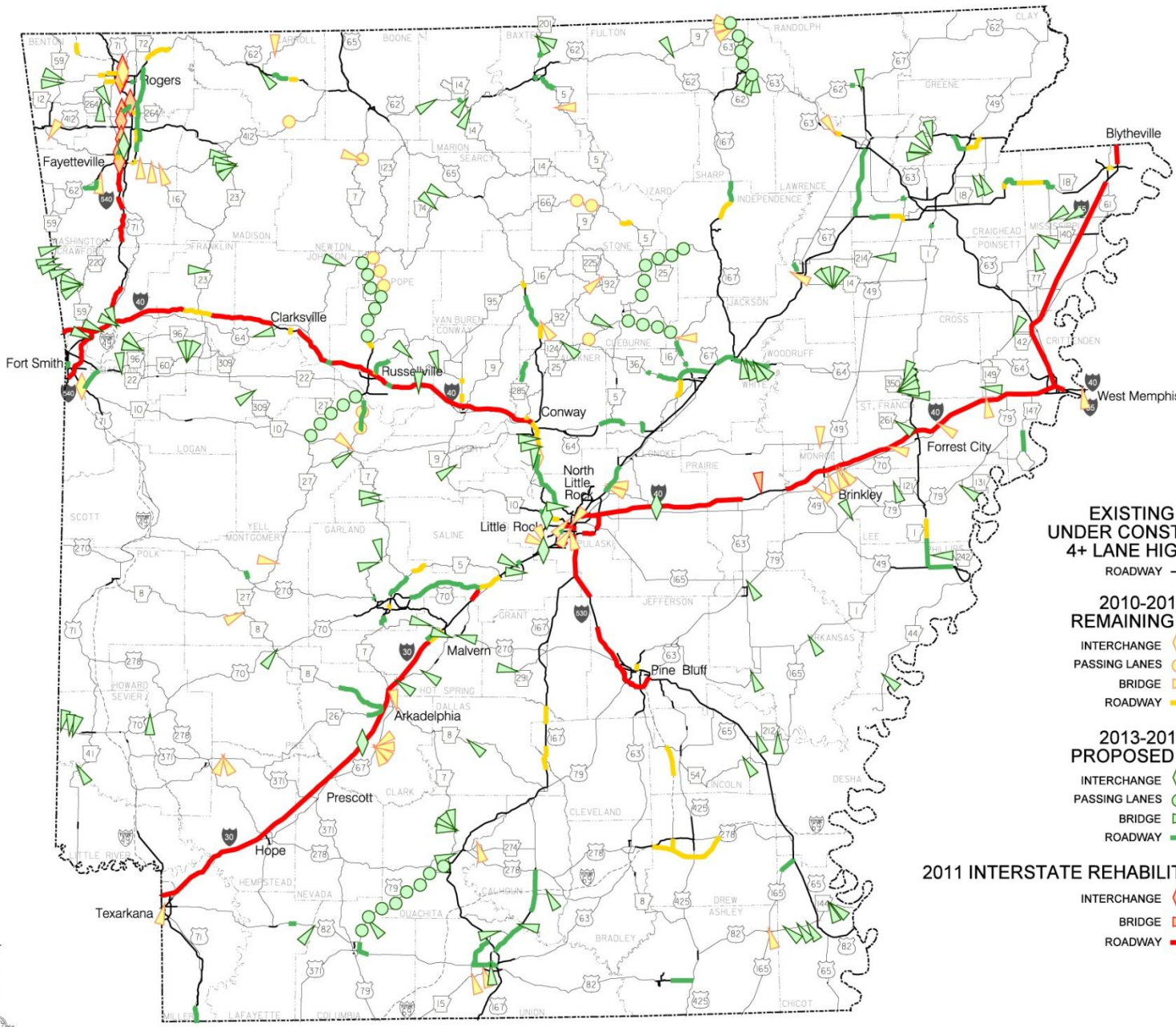


EXISTING AND UNDER CONSTRUCTION 4+ LANE HIGHWAYS

- ROADWAY —
- 2010-2013 REMAINING STIP**
- INTERCHANGE
 - PASSING LANES
 - BRIDGE
 - ROADWAY

- 2013-2016 PROPOSED STIP**
- INTERCHANGE
 - PASSING LANES
 - BRIDGE
 - ROADWAY





EXISTING AND UNDER CONSTRUCTION 4+ LANE HIGHWAYS

ROADWAY —

2010-2013 REMAINING STIP

- INTERCHANGE
- PASSING LANES
- BRIDGE
- ROADWAY

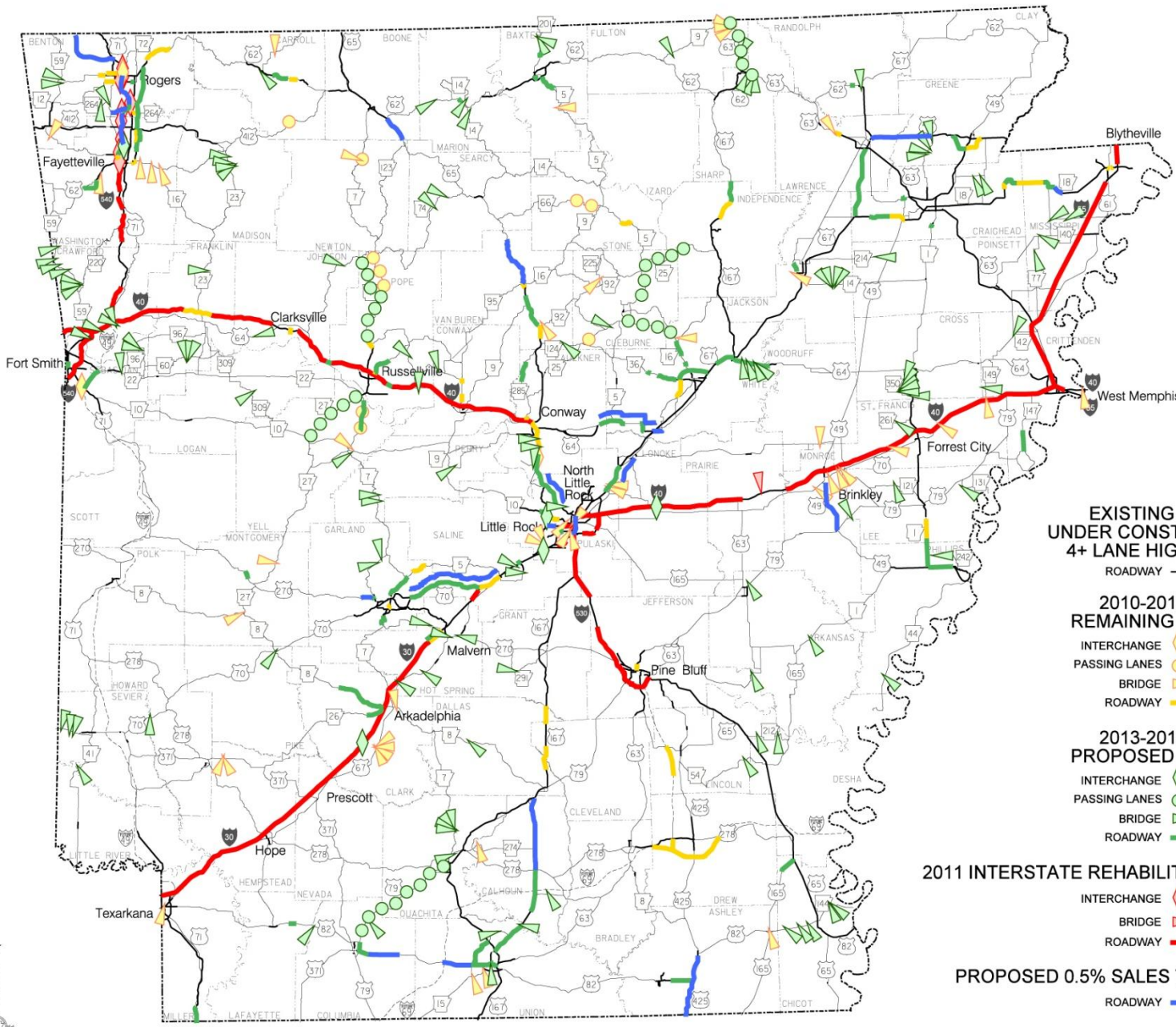
2013-2016 PROPOSED STIP

- INTERCHANGE
- PASSING LANES
- BRIDGE
- ROADWAY

2011 INTERSTATE REHABILITATION PROGRAM

- INTERCHANGE
- BRIDGE
- ROADWAY





EXISTING AND UNDER CONSTRUCTION 4+ LANE HIGHWAYS

ROADWAY —

2010-2013 REMAINING STIP

- INTERCHANGE 
- PASSING LANES 
- BRIDGE 
- ROADWAY 

2013-2016 PROPOSED STIP

- INTERCHANGE 
- PASSING LANES 
- BRIDGE 
- ROADWAY 

2011 INTERSTATE REHABILITATION PROGRAM

- INTERCHANGE 
- BRIDGE 
- ROADWAY 

PROPOSED 0.5% SALES TAX PROGRAM

ROADWAY 





Visit us at www.arkansashighways.com