

ARKANSAS STATE HIGHWAY AND TRANSPORTATION DEPARTMENT



**Little Rock Engineers Club
January 23, 2012**

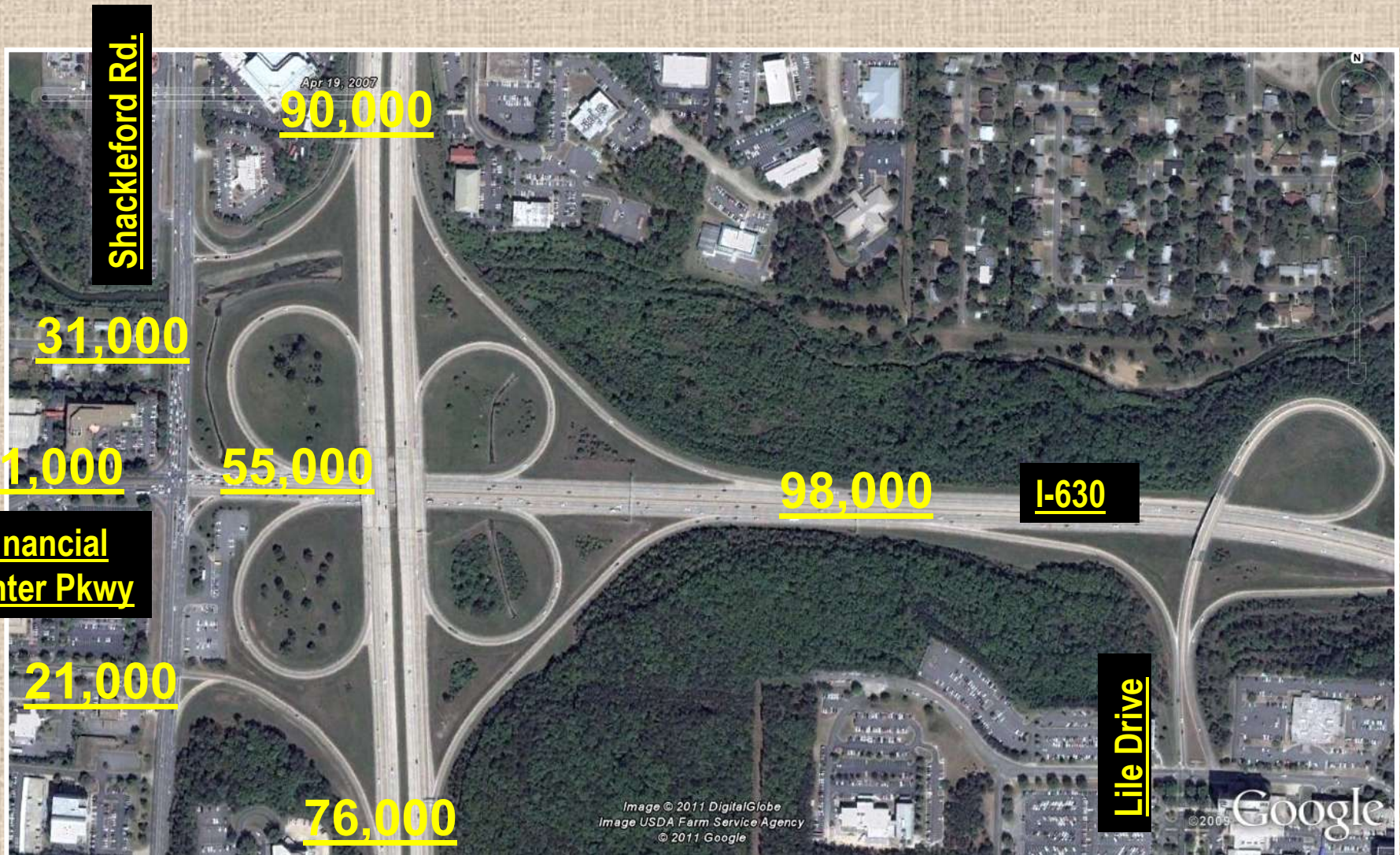
The Big Rock Interchange (I-430/I-630 Interchange Modification Project)



Background



Before Construction



2010 ADTs

Aerial Photo:
4/19/2007



Project Development

Shackleford Road
and
Financial Center
Parkway
Grade Separation

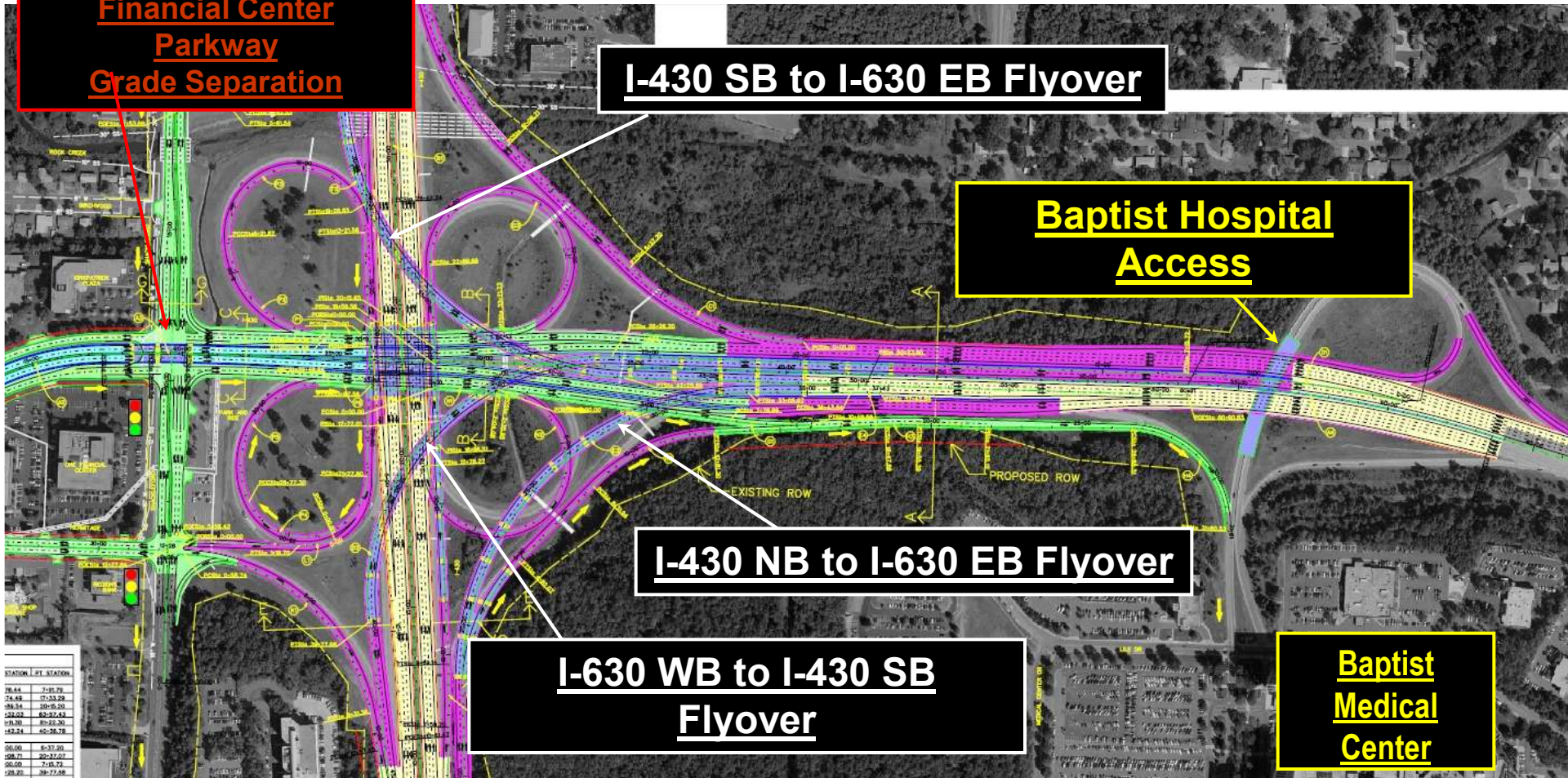
I-430 SB to I-630 EB Flyover

Baptist Hospital
Access

I-430 NB to I-630 EB Flyover

I-630 WB to I-430 SB
Flyover

Baptist
Medical
Center



STATION	LET STATION
24.68	7+39.29
24.68	27+33.29
24.68	10+39.20
24.68	63+27.62
24.68	82+26.20
24.68	62+38.78
24.68	6+37.20
24.68	20+27.62
24.68	2+18.22
24.68	20+27.62
24.68	20+27.62



Conceptual Design

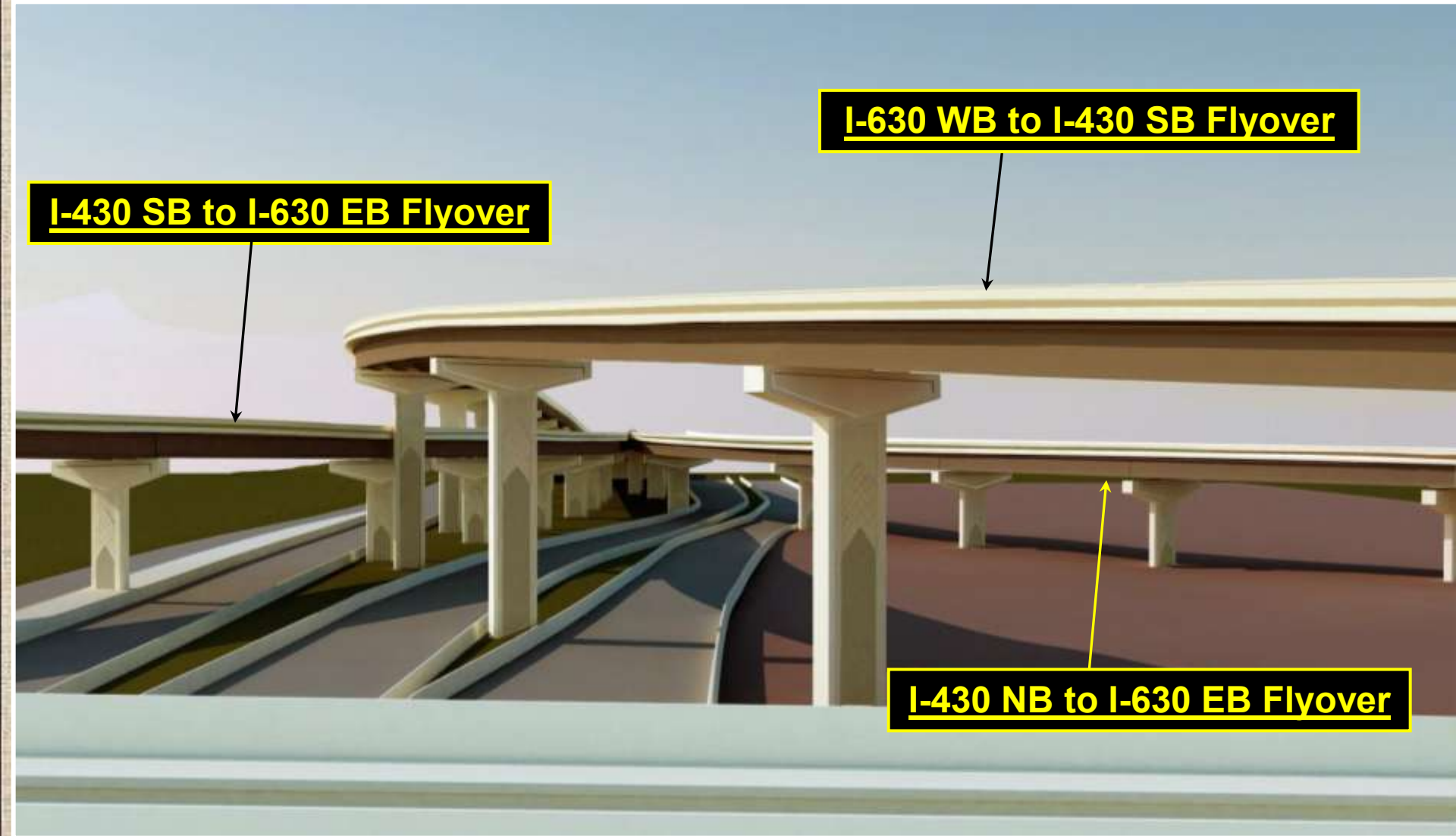


Flyover Ramps

I-430 SB to I-630 EB Flyover

I-630 WB to I-430 SB Flyover

I-430 NB to I-630 EB Flyover



Shackleford Road Overpass



I-430 Bridges



Under Construction





Angling for the right fit



Arkansas Democrat-Gazette/KAREN E. SEGRAVE

Contract workers tear down a cap on one of the columns for a new fly-over Thursday at the Interstate 430/630 interchange in west Little Rock. An inspection discovered the newly completed cap had been installed at an incorrect angle. A new cap will be installed, an Arkansas Highway and Transportation Department spokesman said.

Maintenance of Traffic







An Award Winning Project



2011 Interstate Rehabilitation Program



Timeline

April 2011	RFPs for design consultants
November 2011	Contract signed with Financial Advisor
December 2011	Agreements signed with 10 design firms
Currently	Assigning projects to design firms
Late 2012 (tentative)	Issue bonds and let first contracts



INTERSTATE CONDITION

1999 PRE-IRP



2006 POST-IRP



2014



2020 WITH BONDS



GOOD

FAIR

POOR

Temporary 0.5% Sales Tax ((Issue #1))

- November 6, 2012 election ballot
- Temporary Increase
- \$230M annually (\$160M/\$35M/\$35M)
- State Aid Street Fund for city streets



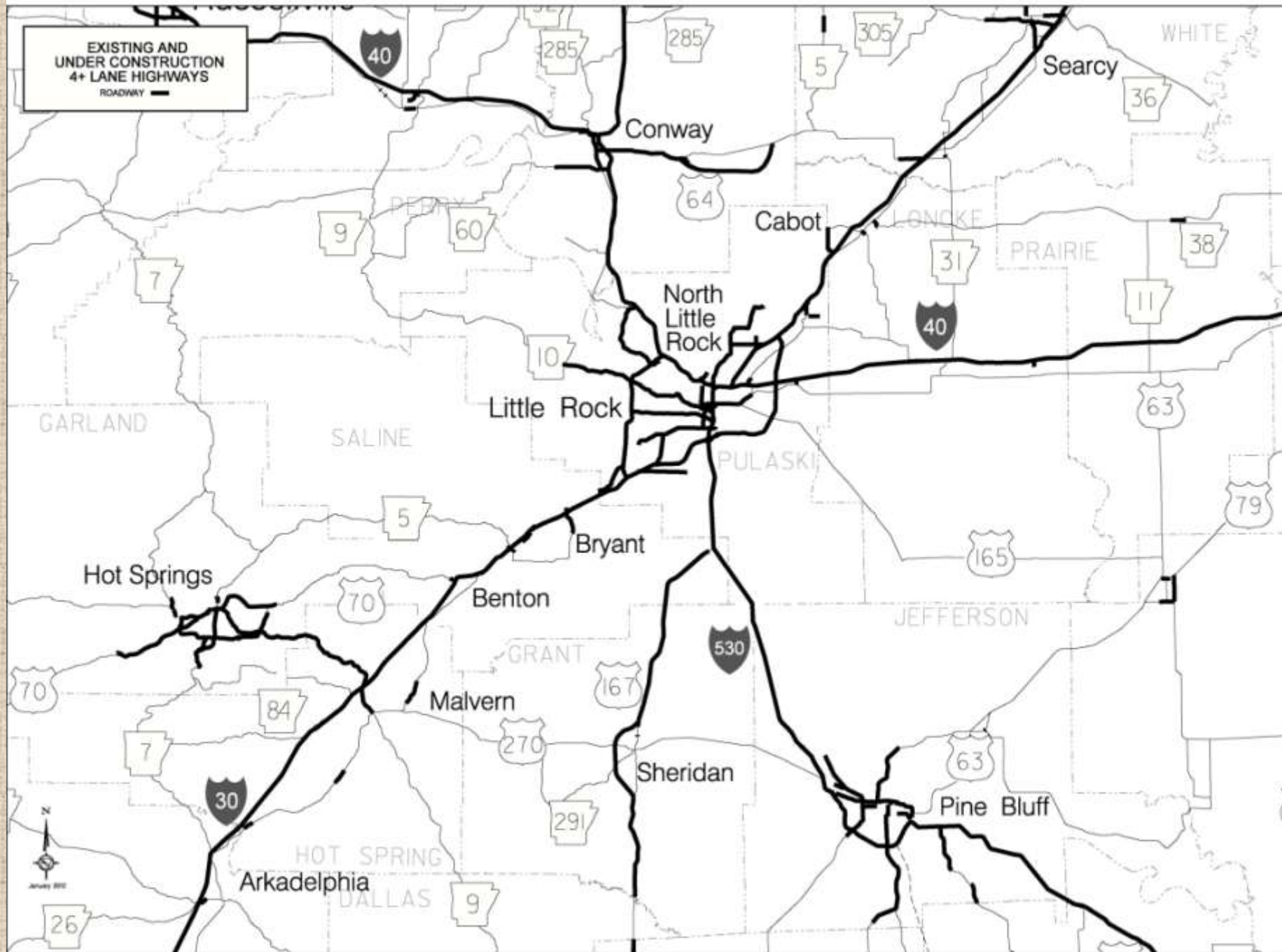
Temporary 0.5% Sales Tax (Issue #1)

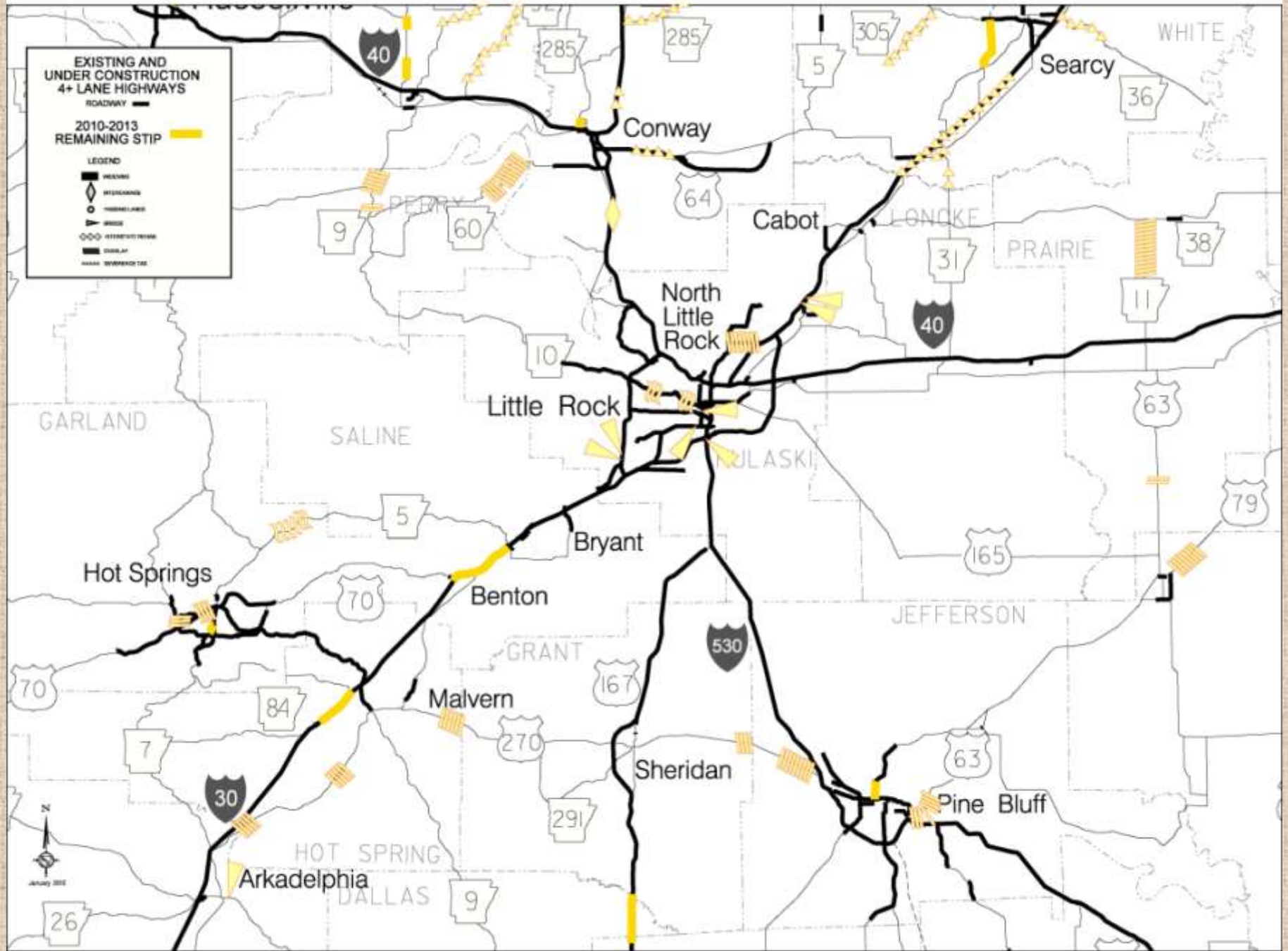
- Bond debt retired over 10 years
- \$1.3 Billion in general obligation bonds
- Tax expires when the bonds are retired
- Four-lane highways
- \$1.8 Billion total program

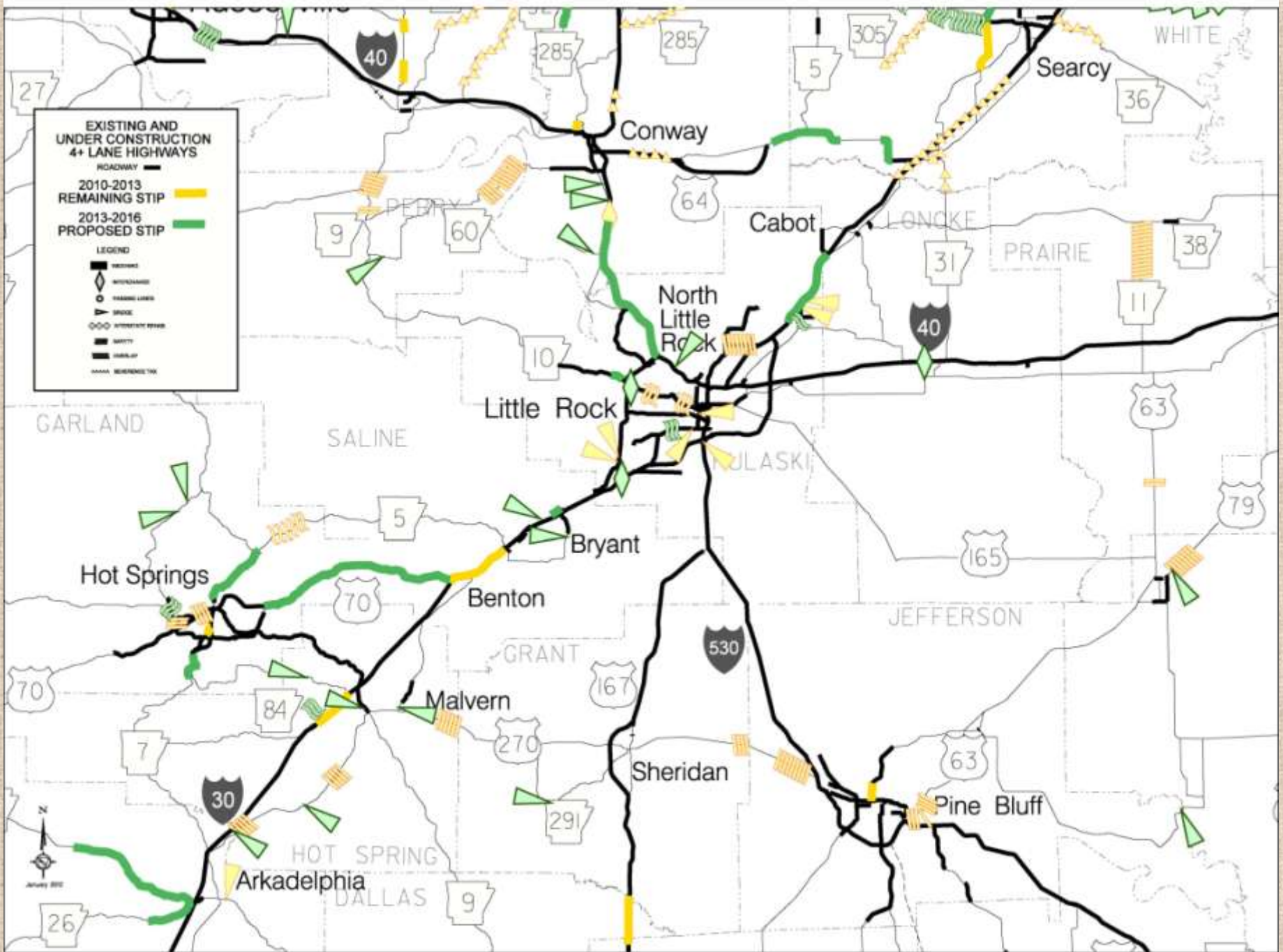


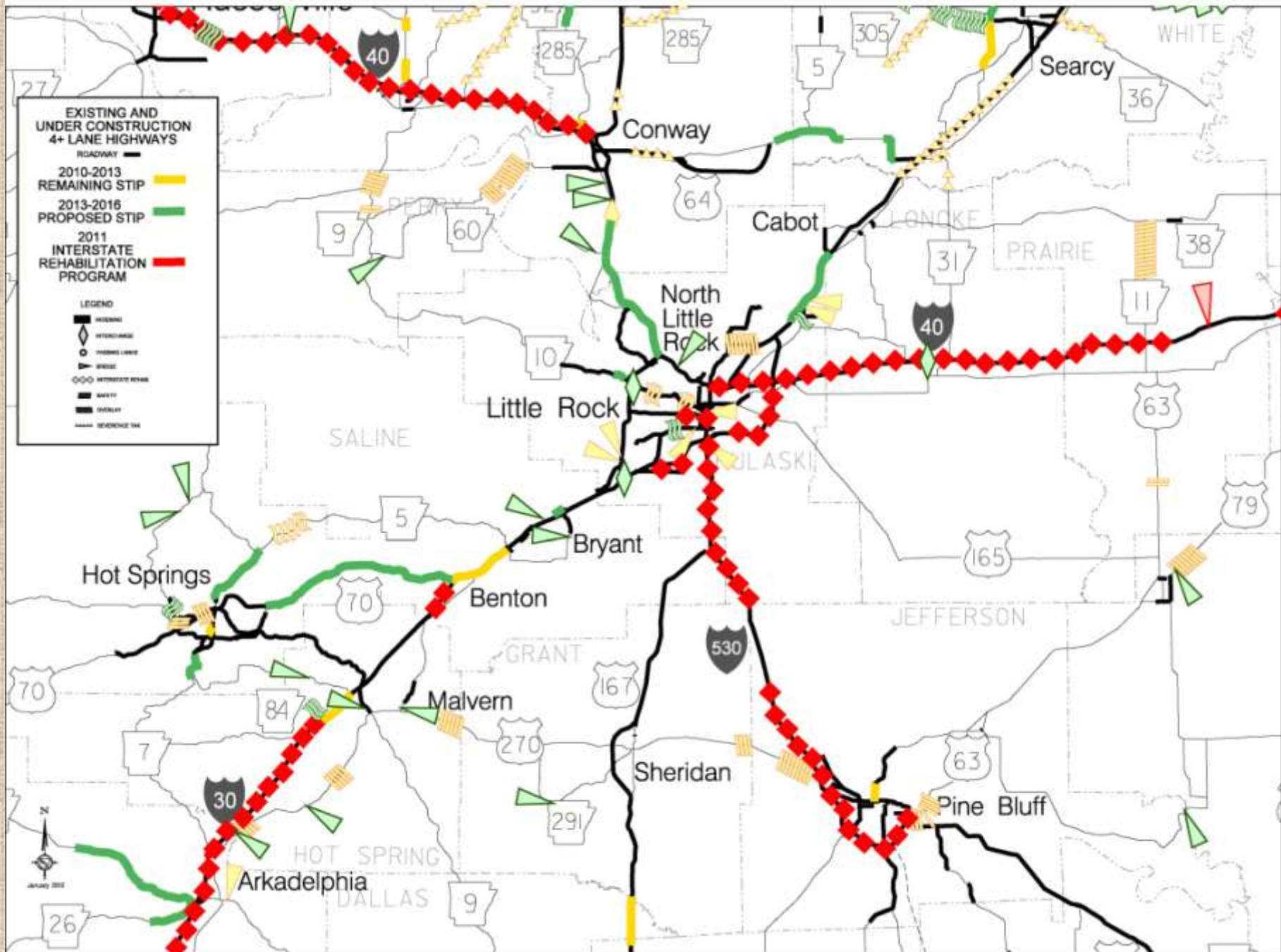
EXISTING AND
UNDER CONSTRUCTION
4+ LANE HIGHWAYS

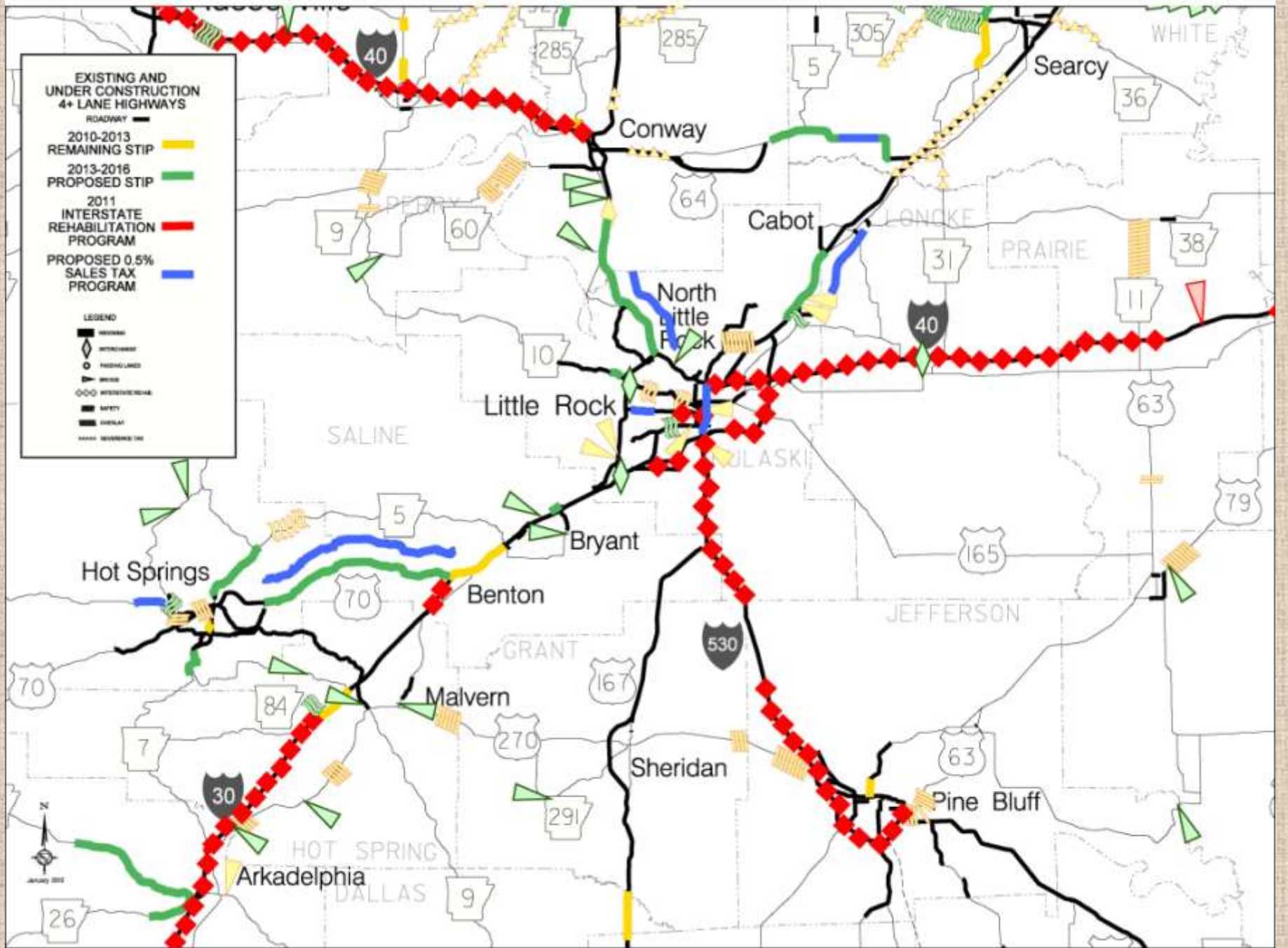
ROADWAY —









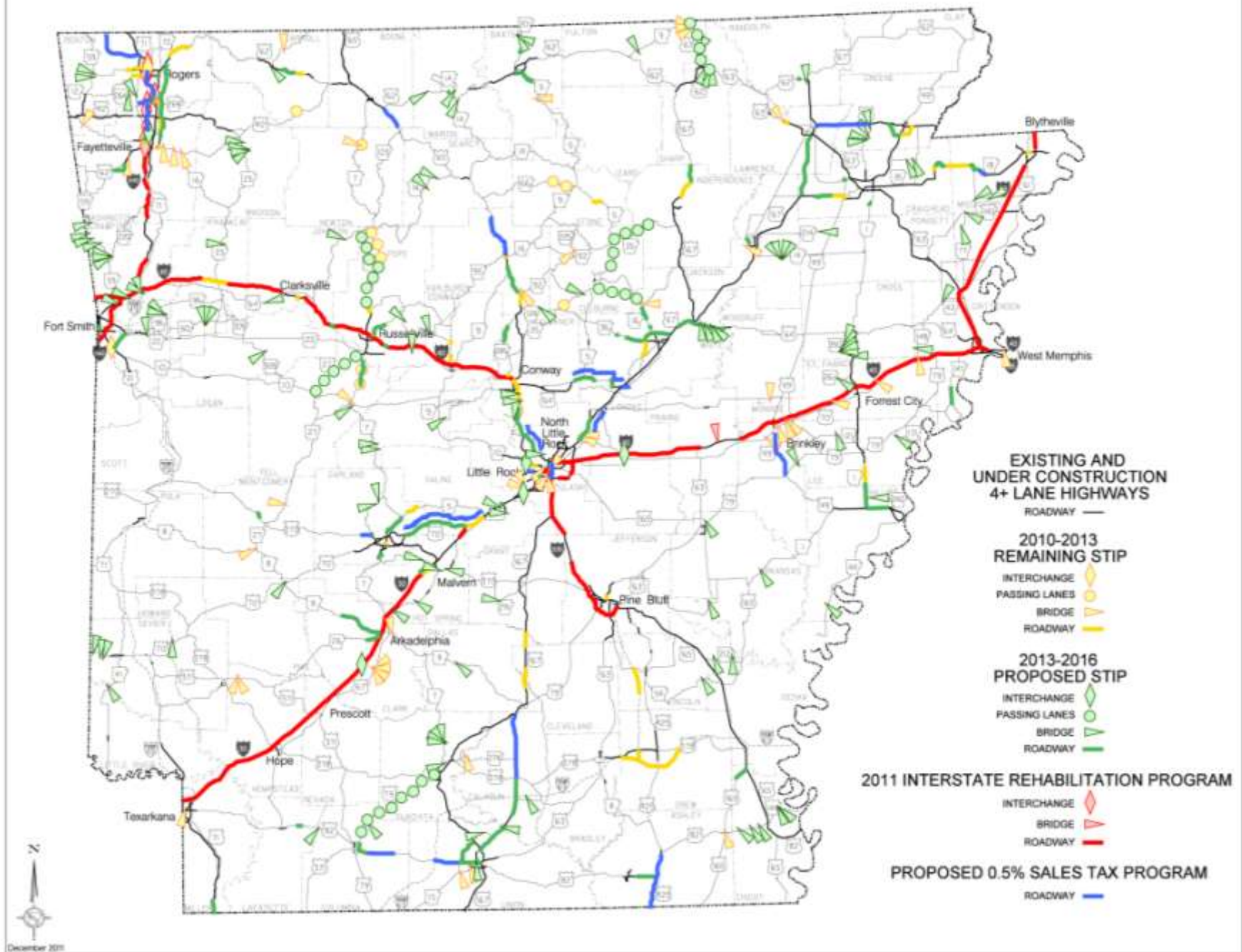


Benefits of Temporary 0.5% Tax

- **Completion of widening I-40 to six lanes between Conway and North Little Rock;**
- **Completion of widening U.S. Highway 67 to six lanes from Jacksonville to Cabot;**
- **Improvements to I-30 connecting Little Rock and North Little Rock, including widening Arkansas River bridge;**
- **Widening I-30 from Sevier Street to Highway 70;**

Benefits of Temporary 0.5% Tax

- **Widening I-630 to eight lanes from Baptist Hospital to University Avenue;**
- **Completion of widening U. S. Hwy. 64 to four lanes between Conway and Beebe;**
- **Completion of widening U. S. Hwy. 70 to four lanes between I-30 and Hot Springs;**



EXISTING AND UNDER CONSTRUCTION 4+ LANE HIGHWAYS

ROADWAY —

2010-2013 REMAINING STIP

- INTERCHANGE 
- PASSING LANES 
- BRIDGE 
- ROADWAY 

2013-2016 PROPOSED STIP

- INTERCHANGE 
- PASSING LANES 
- BRIDGE 
- ROADWAY 

2011 INTERSTATE REHABILITATION PROGRAM

- INTERCHANGE 
- BRIDGE 
- ROADWAY 

PROPOSED 0.5% SALES TAX PROGRAM

ROADWAY 

Temporary 0.5% Sales Tax (Issue #1)

**“Things do not happen. Things are made to happen.”
- John F. Kennedy**

**“Difficulties mastered are opportunities won.”
- Winston Churchill**





Visit us at www.arkansashighways.com