

# ARKANSAS STATE HIGHWAY AND TRANSPORTATION DEPARTMENT



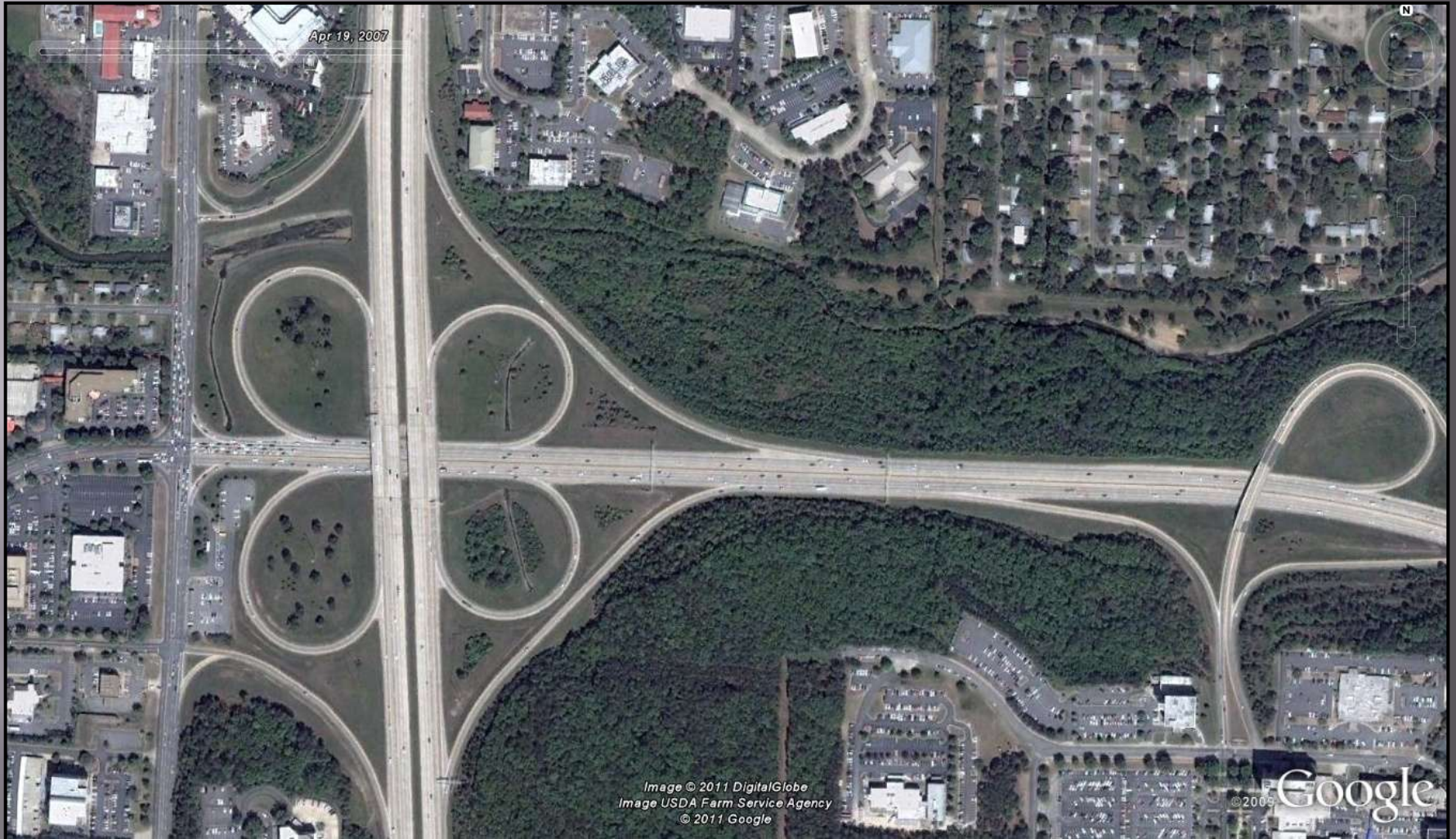
Little Rock Rotary Club  
January 31, 2012

# Interstate 430/630 Interchange Improvement Project





# Before Construction



Aerial Photo: 4/19/2007

# THE BIG ROCK INTERCHANGE





# Under Construction





# Proposed Project

Shackleford Road  
and  
Financial Center Parkway  
Grade Separation

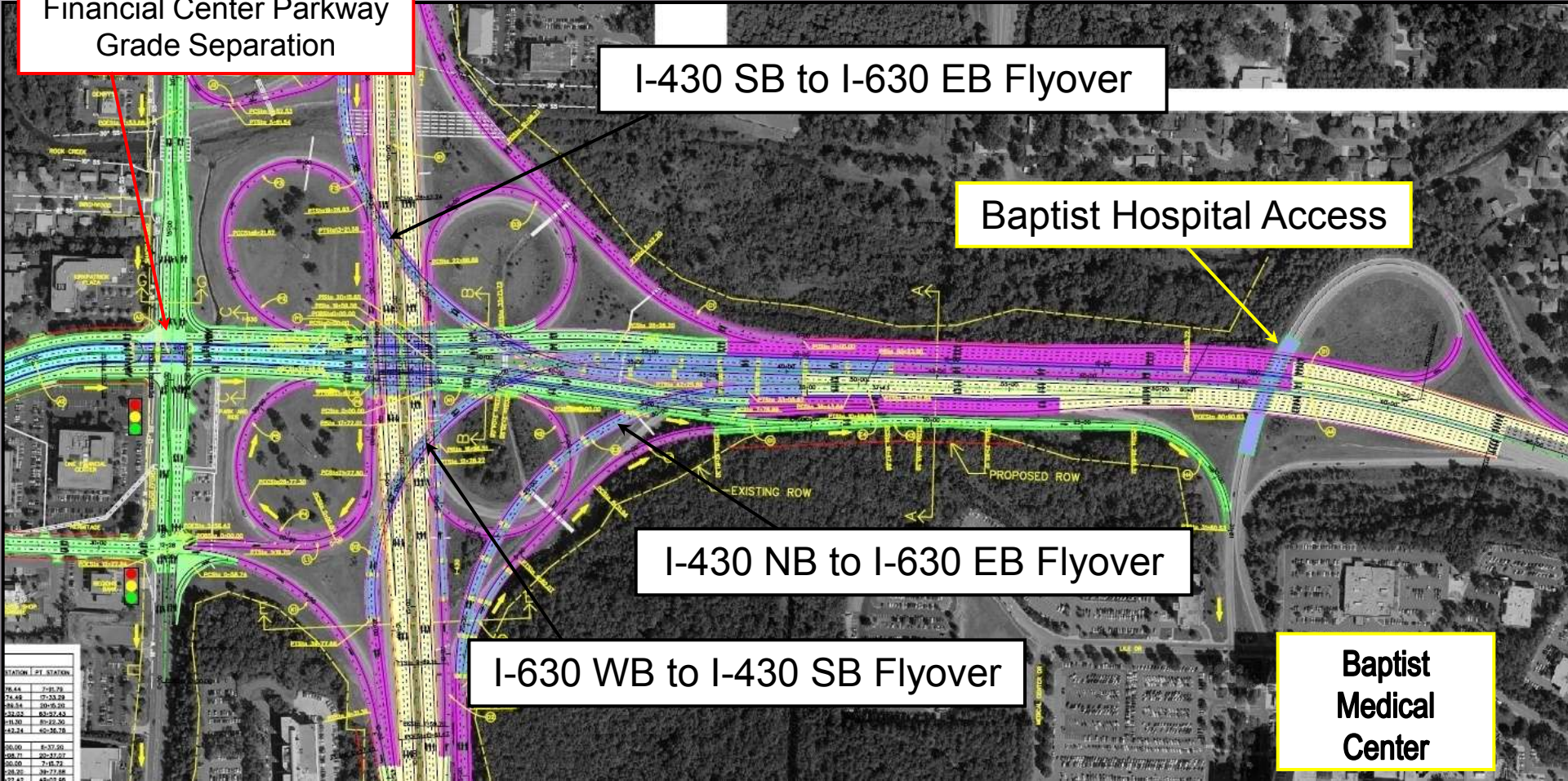
I-430 SB to I-630 EB Flyover

Baptist Hospital Access

I-430 NB to I-630 EB Flyover

I-630 WB to I-430 SB Flyover

Baptist  
Medical  
Center

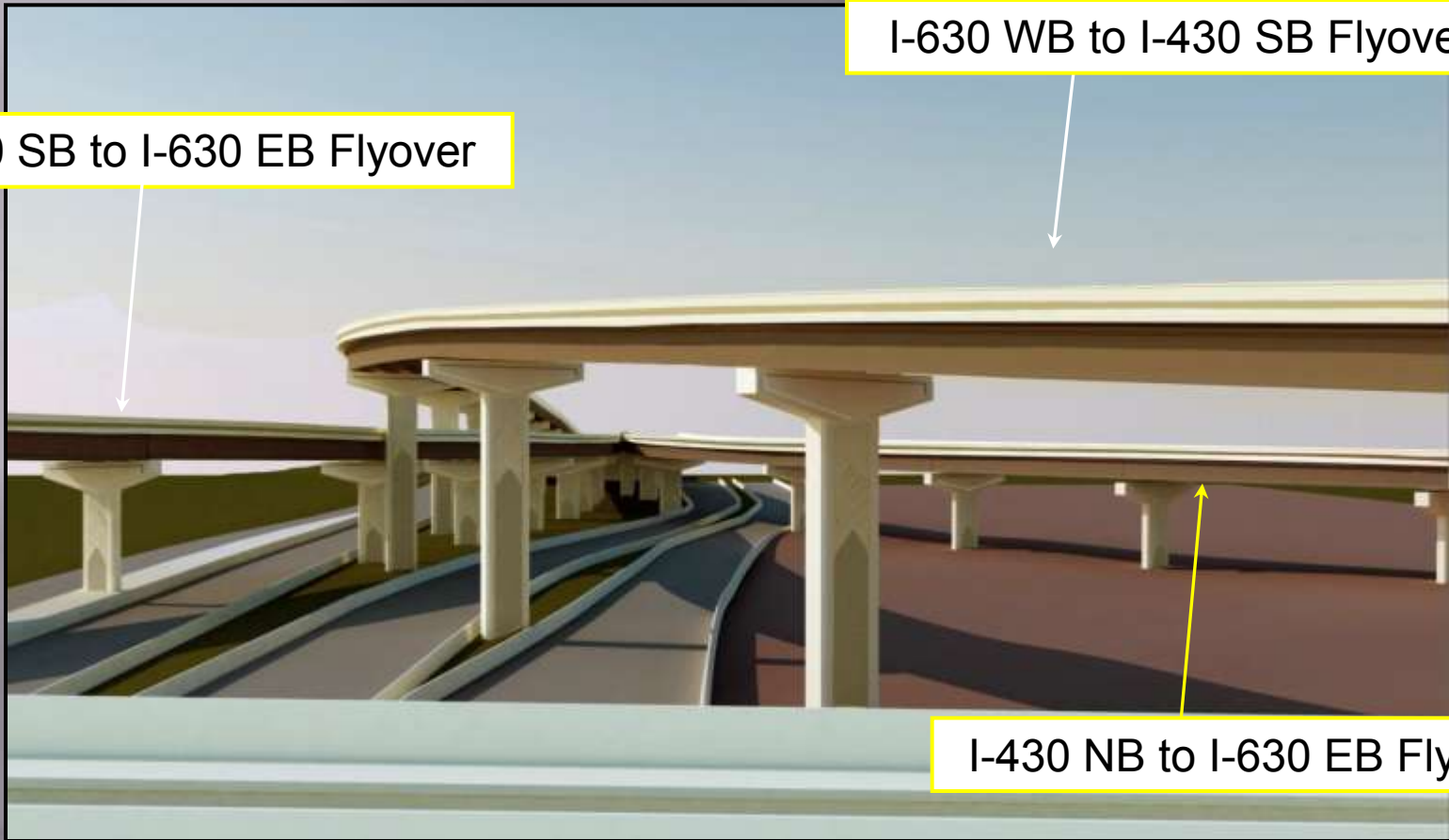


# Flyover Ramps

I-430 SB to I-630 EB Flyover

I-630 WB to I-430 SB Flyover

I-430 NB to I-630 EB Flyover











# Aesthetics





# An Award Winning Project



# 2011 Interstate Rehabilitation Program





# Timeline

April 2011	RFPs for design consultants
November 2011	Contract signed with Financial Advisor
December 2011	Agreements signed with 10 design firms
Currently	Assigning projects to design firms
Late 2012 (tentative)	Issue bonds and let first contracts



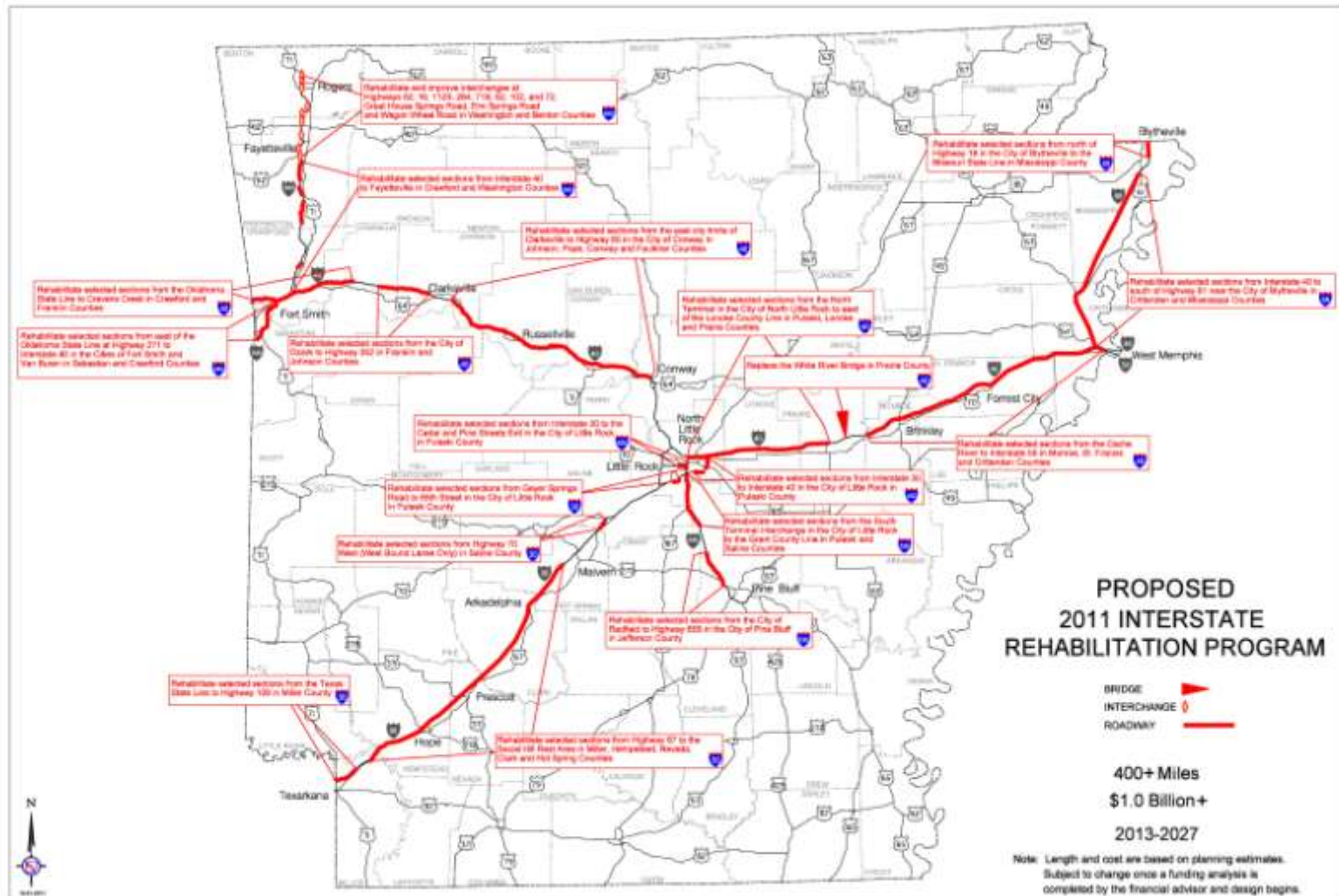
# Types of Work

- Mill and Inlay
- Mill and Overlay
- Rubblize and Overlay
- Mill, Rubblize and Overlay
- Concrete Pavement Rehabilitation
- Concrete Reconstruction
- Interchanges Modifications





# 2011 Interstate Rehabilitation Program Map



# INTERSTATE CONDITION

**1999 PRE-IRP**



**2006 POST-IRP**



**2014**



**2020 WITH BONDS**



**GOOD**

**FAIR**

**POOR**



# Temporary 0.5% Sales Tax (Issue #1)

- November 6, 2012 election ballot
- Temporary Increase
- \$230m annually (\$160m/\$35m/\$35m)
- State Aid Street Fund for City Streets



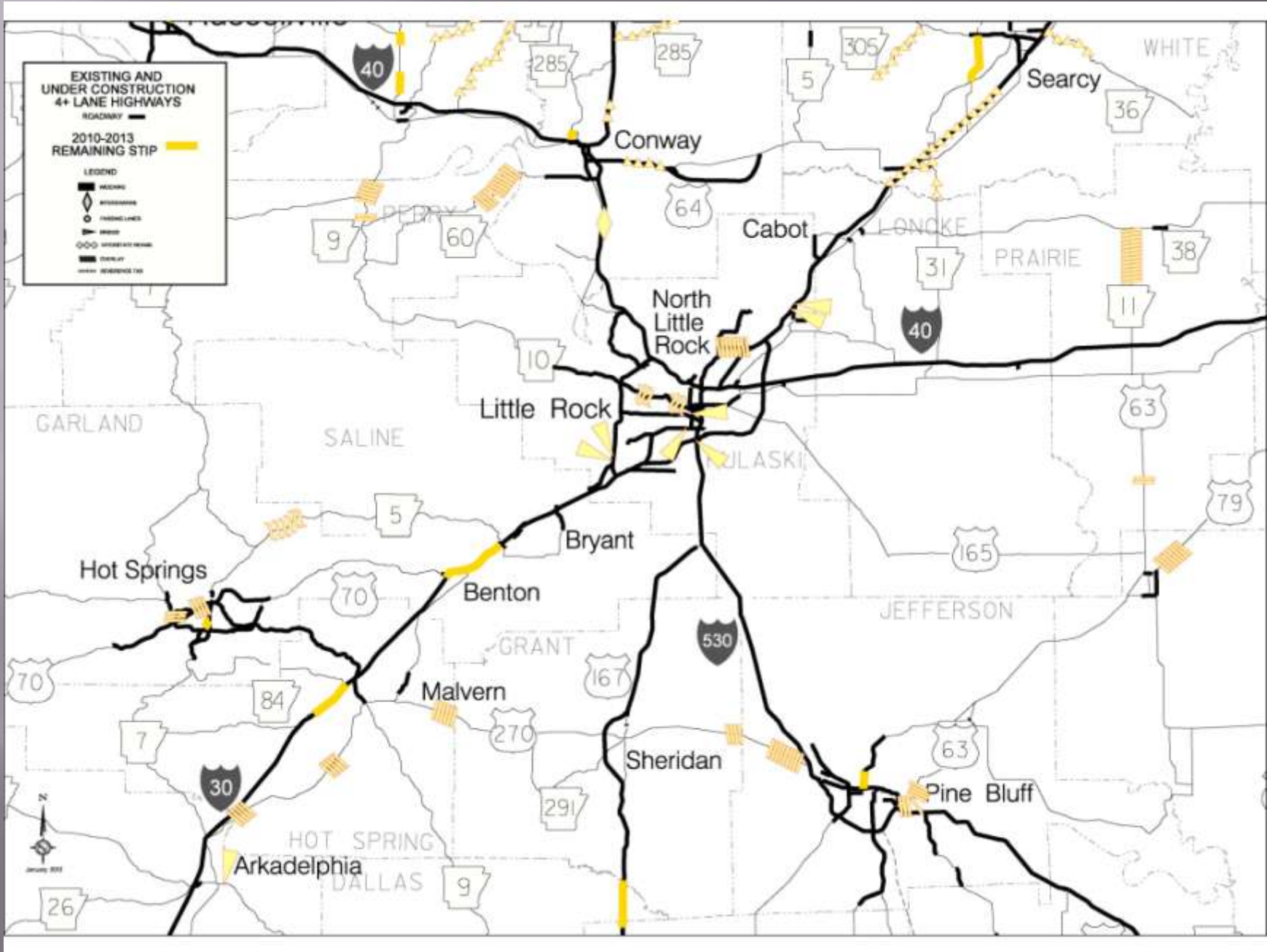
# Temporary 0.5% Sales Tax (Issue #1)

- Bond debt retired over 10 years
- \$1.3 Billion in general obligation bonds
- Tax expires when the bonds are retired
- Four-lane highways
- \$1.8 Billion total program

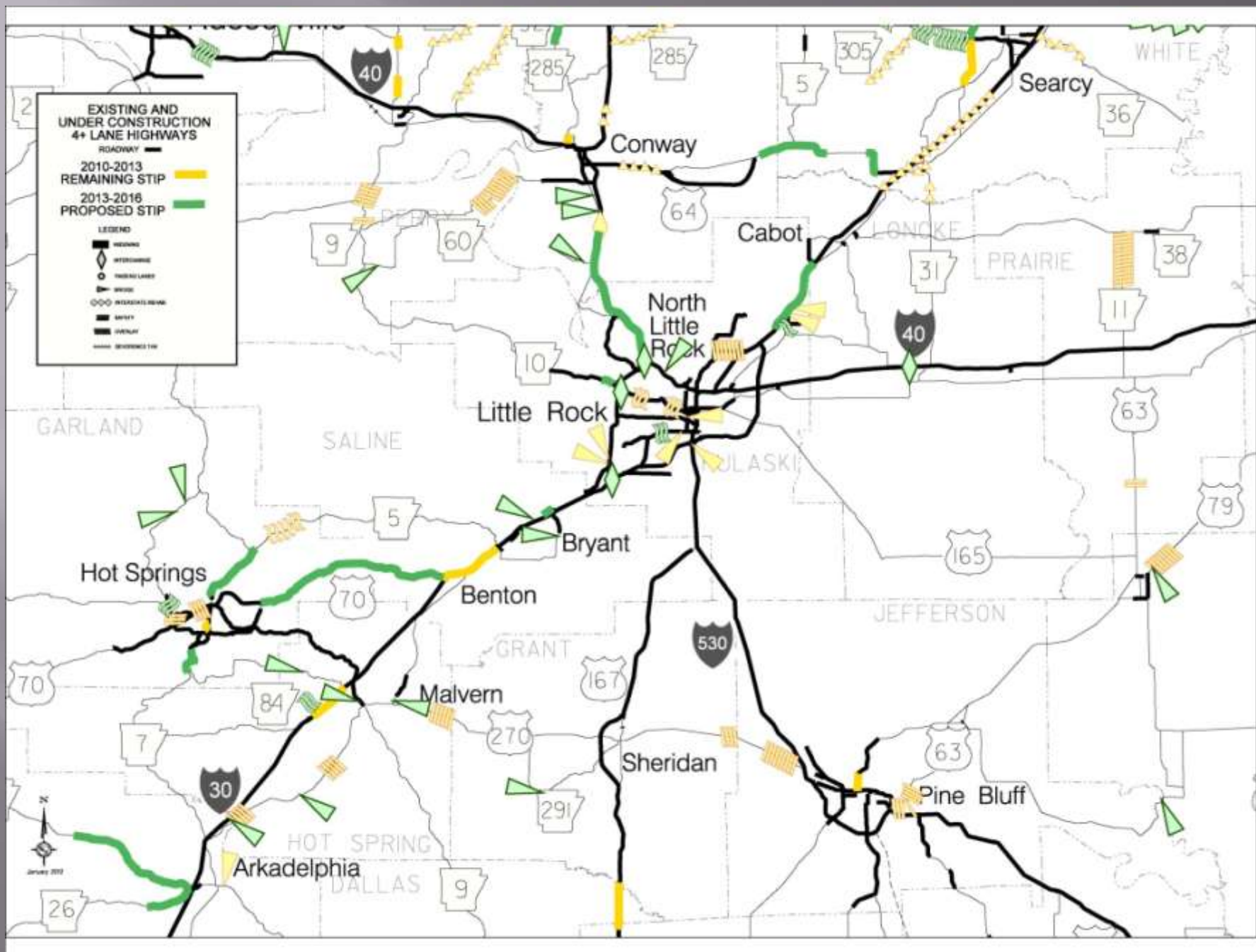
















**EXISTING AND UNDER CONSTRUCTION 4+ LANE HIGHWAYS**

ROADWAY —

2010-2013 REMAINING STIP —

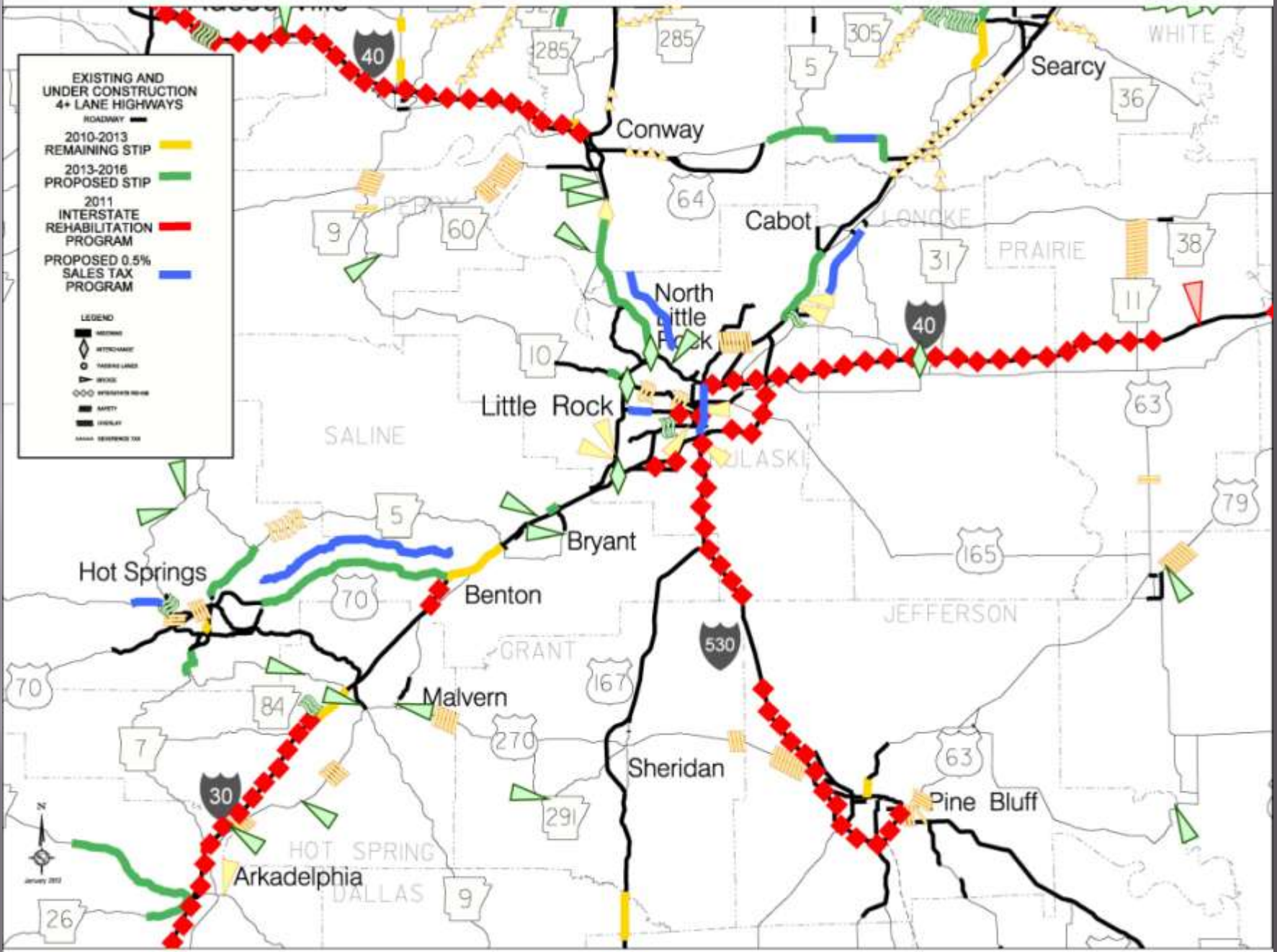
2013-2016 PROPOSED STIP —

2011 INTERSTATE REHABILITATION PROGRAM —

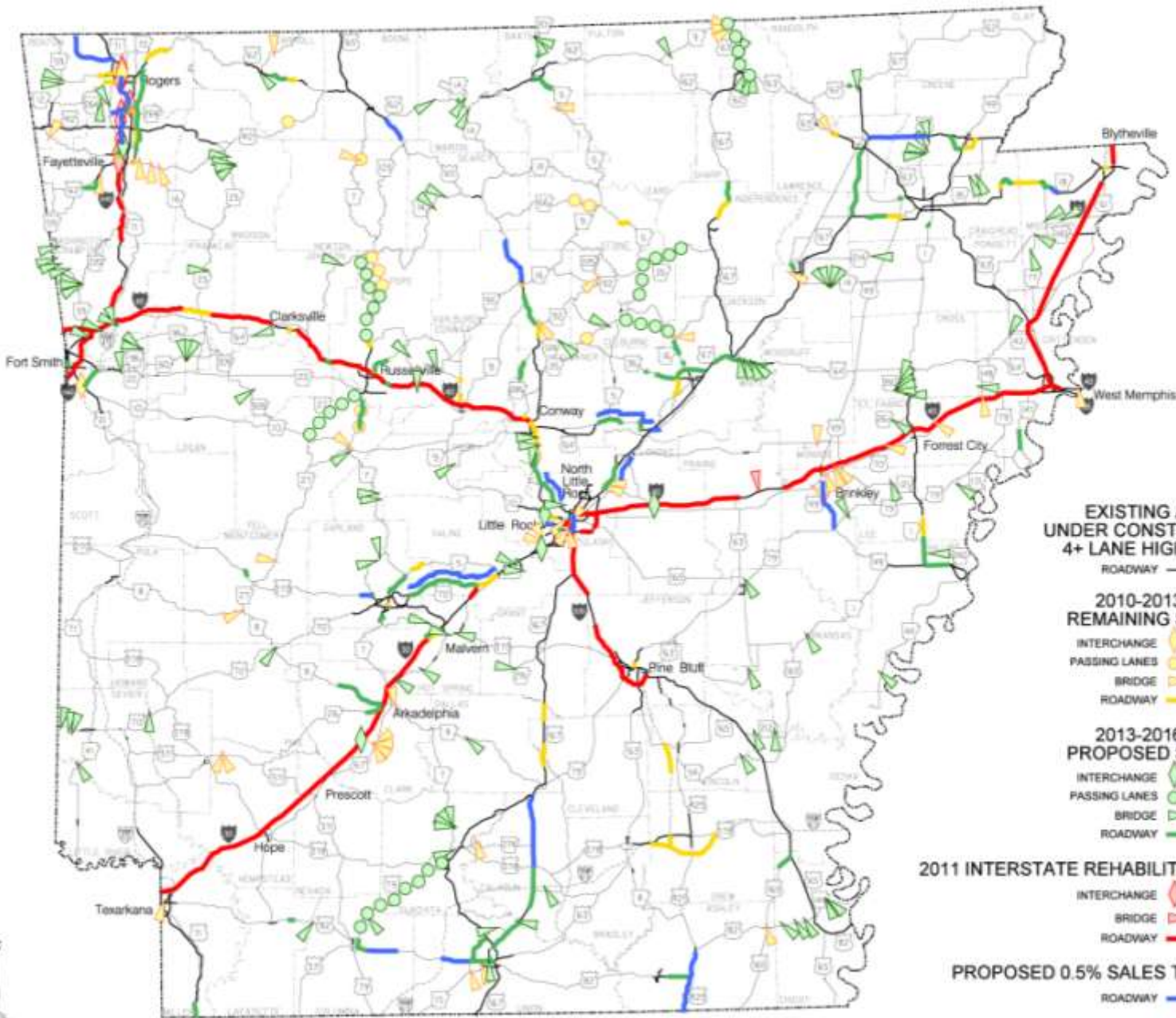
PROPOSED 0.5% SALES TAX PROGRAM —

**LEGEND**

- INTERCHANGE
- AT-RISCHMENT
- TRAVEL LANE
- BRIDGE
- AVIATION MILEAGE
- SAFETY
- LANEWAY
- RESIDENCE TAX







**EXISTING AND UNDER CONSTRUCTION 4+ LANE HIGHWAYS**

ROADWAY —

**2010-2013 REMAINING STIP**

- INTERCHANGE 
- PASSING LANES 
- BRIDGE 
- ROADWAY 

**2013-2016 PROPOSED STIP**

- INTERCHANGE 
- PASSING LANES 
- BRIDGE 
- ROADWAY 

**2011 INTERSTATE REHABILITATION PROGRAM**

- INTERCHANGE 
- BRIDGE 
- ROADWAY 

**PROPOSED 0.5% SALES TAX PROGRAM**

ROADWAY 





Visit us at [www.arkansashighways.com](http://www.arkansashighways.com)