

# ARKANSAS STATE HIGHWAY AND TRANSPORTATION DEPARTMENT



Little Rock Civitans  
April 19, 2012

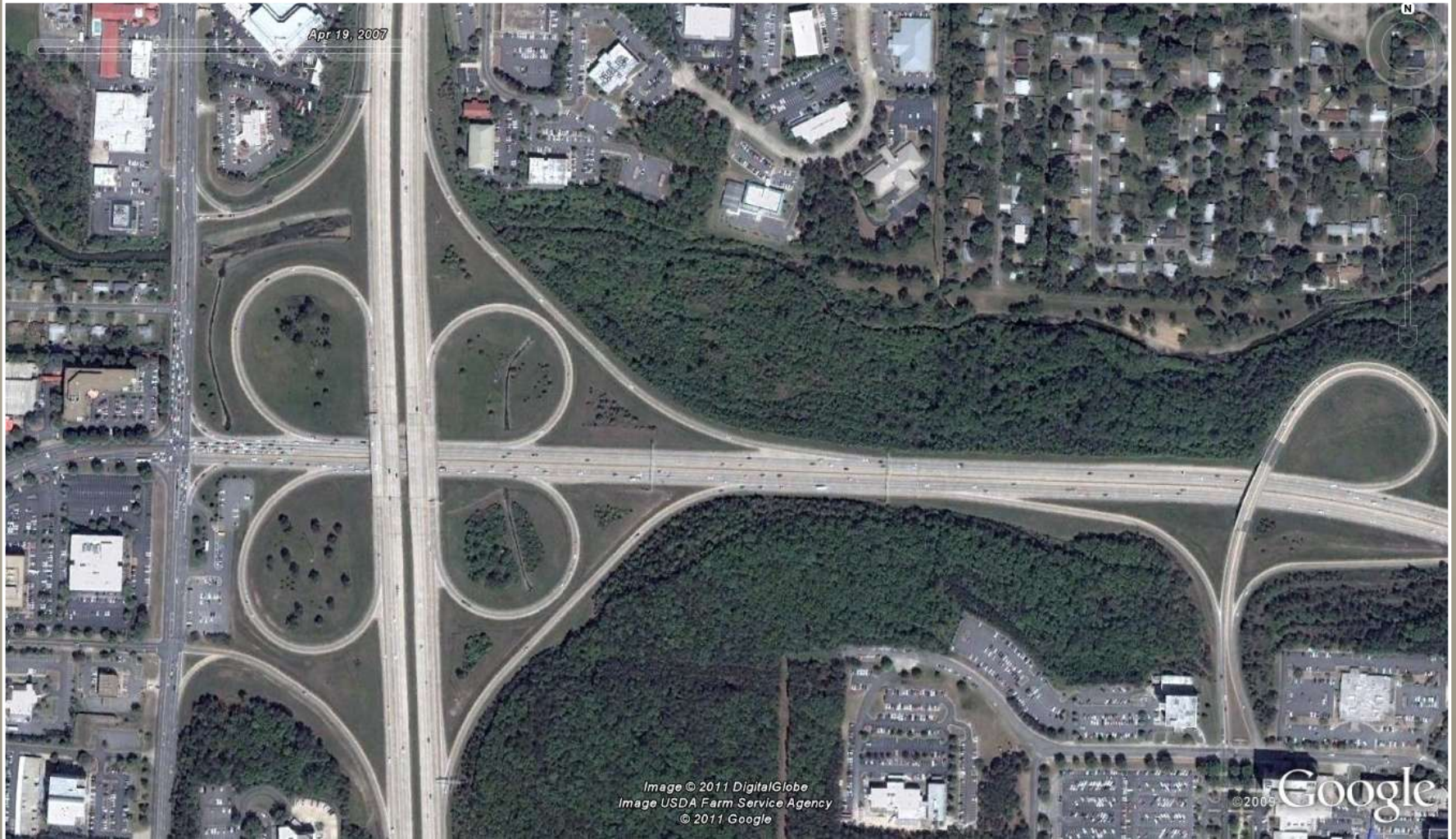


# Interstate 430/630 Interchange Improvement Project





# Before Construction



Aerial Photo: 4/19/2007

# The Big Rock Interchange





# Under Construction





# Proposed Project

Shackleford Road  
and  
Financial Center Parkway  
Grade Separation

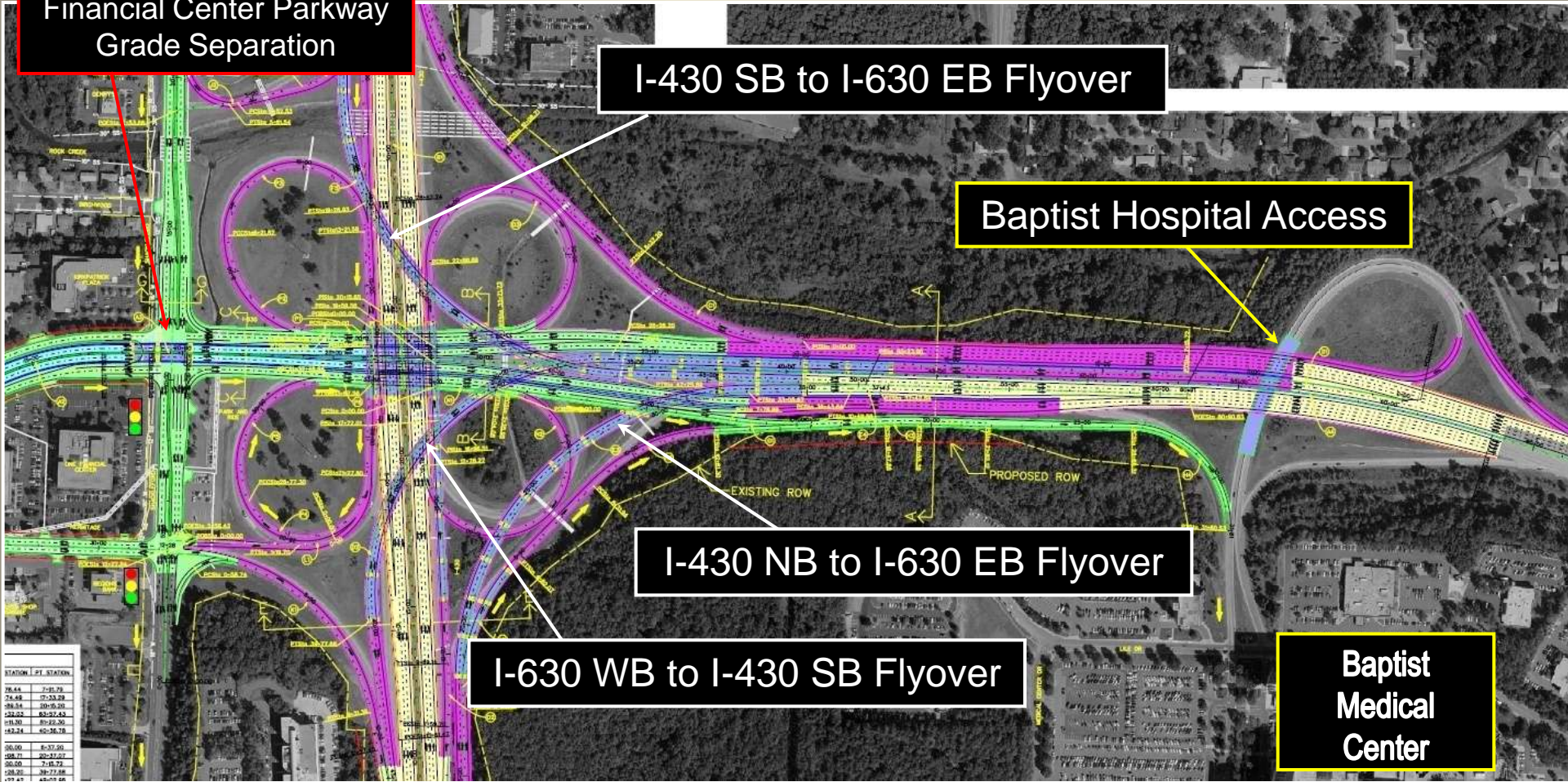
I-430 SB to I-630 EB Flyover

Baptist Hospital Access

I-430 NB to I-630 EB Flyover

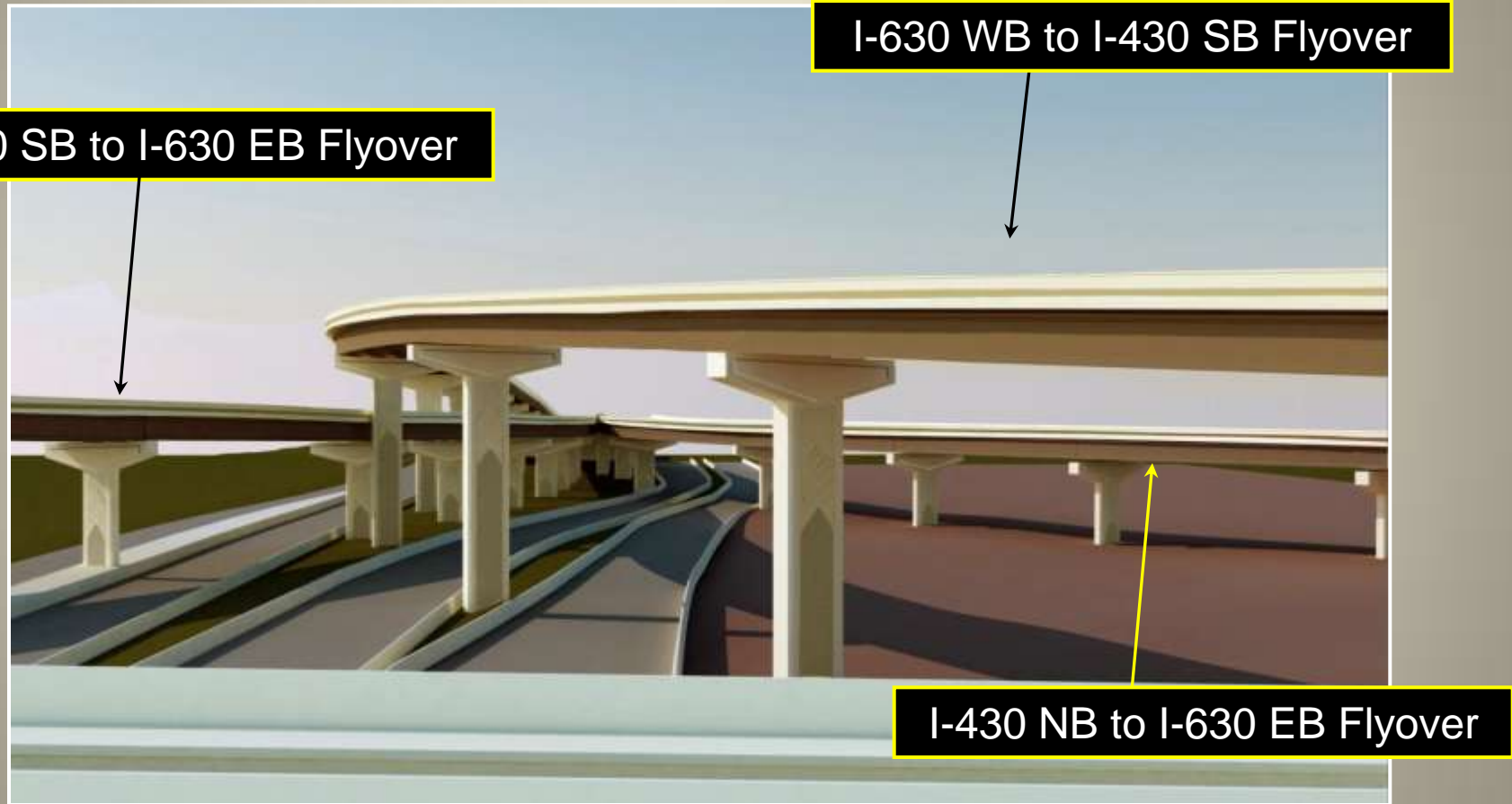
I-630 WB to I-430 SB Flyover

Baptist  
Medical  
Center



STATION	PT. STATION
74.48	75-29.79
74.48	75-29.79
83.84	10-20.20
112.02	62-27.63
111.00	82-25.20
152.24	62-26.78
00.00	8-37.90
108.71	62-27.62
90.00	2-15.22
108.20	38-27.88
99.47	43-17.84

# Flyover Ramps









# Aesthetics



# An Award Winning Project

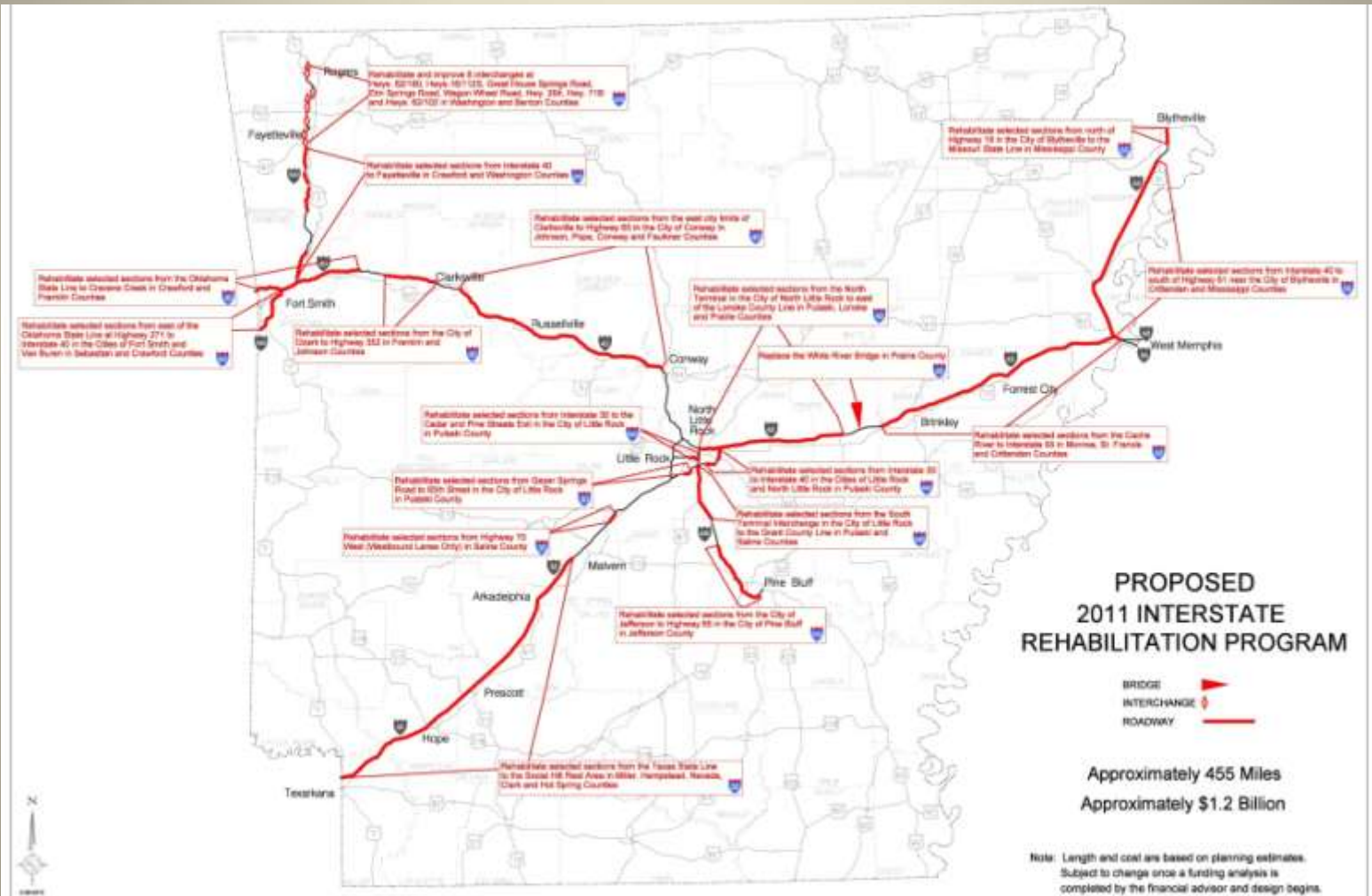




# 2011 Interstate Rehabilitation Program



# 2011 Interstate Rehabilitation Program Map





# INTERSTATE CONDITION

**1999 PRE-IRP**



**2006 POST-IRP**



**2014**



**2020 WITH BONDS**



**GOOD**

**FAIR**

**POOR**

# Temporary 0.5% Sales Tax (Issue #1)

- November 6, 2012 election ballot
- Temporary Increase
- \$230m annually (\$160m/\$35m/\$35m)
- State Aid Street Fund for City Streets

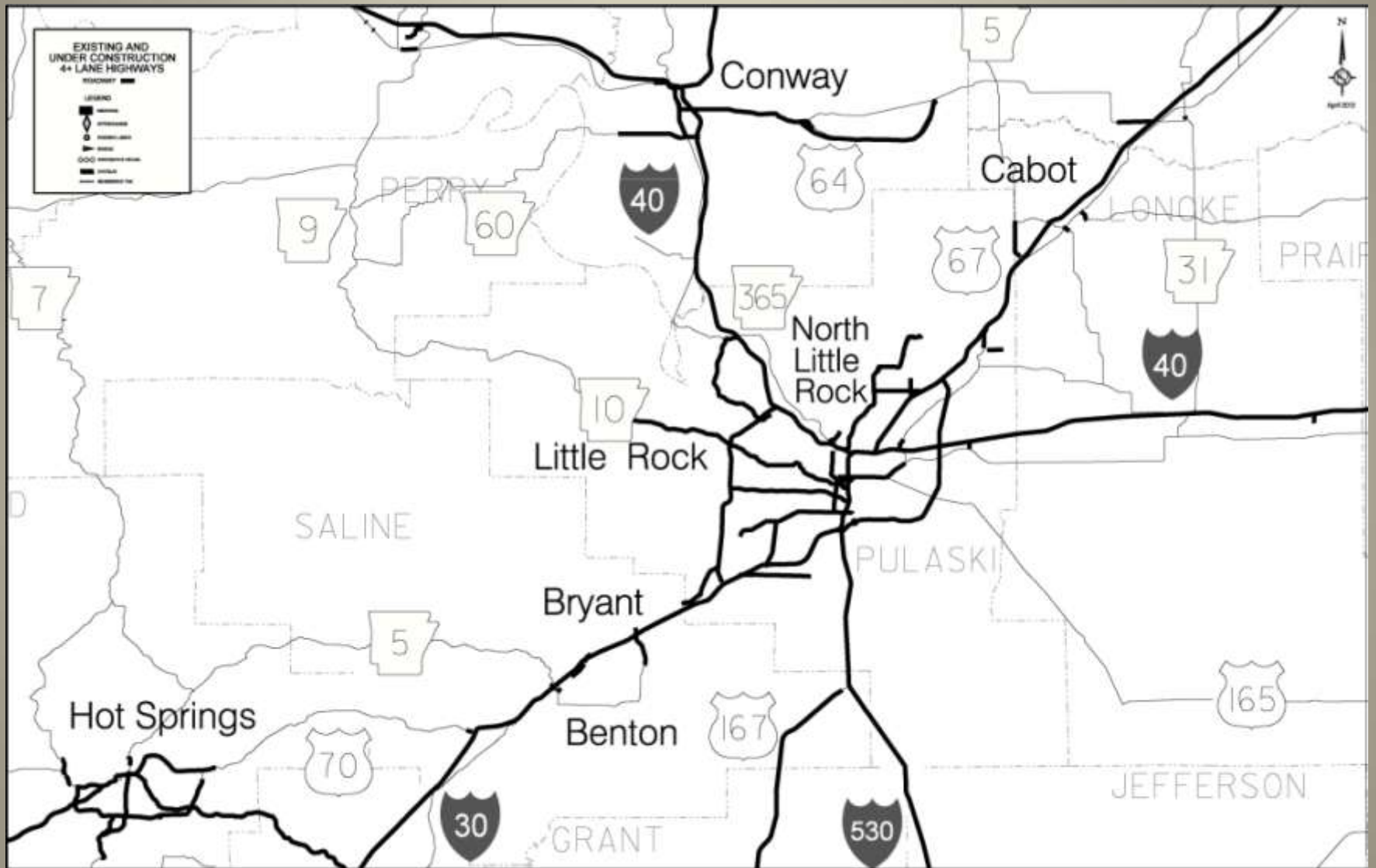


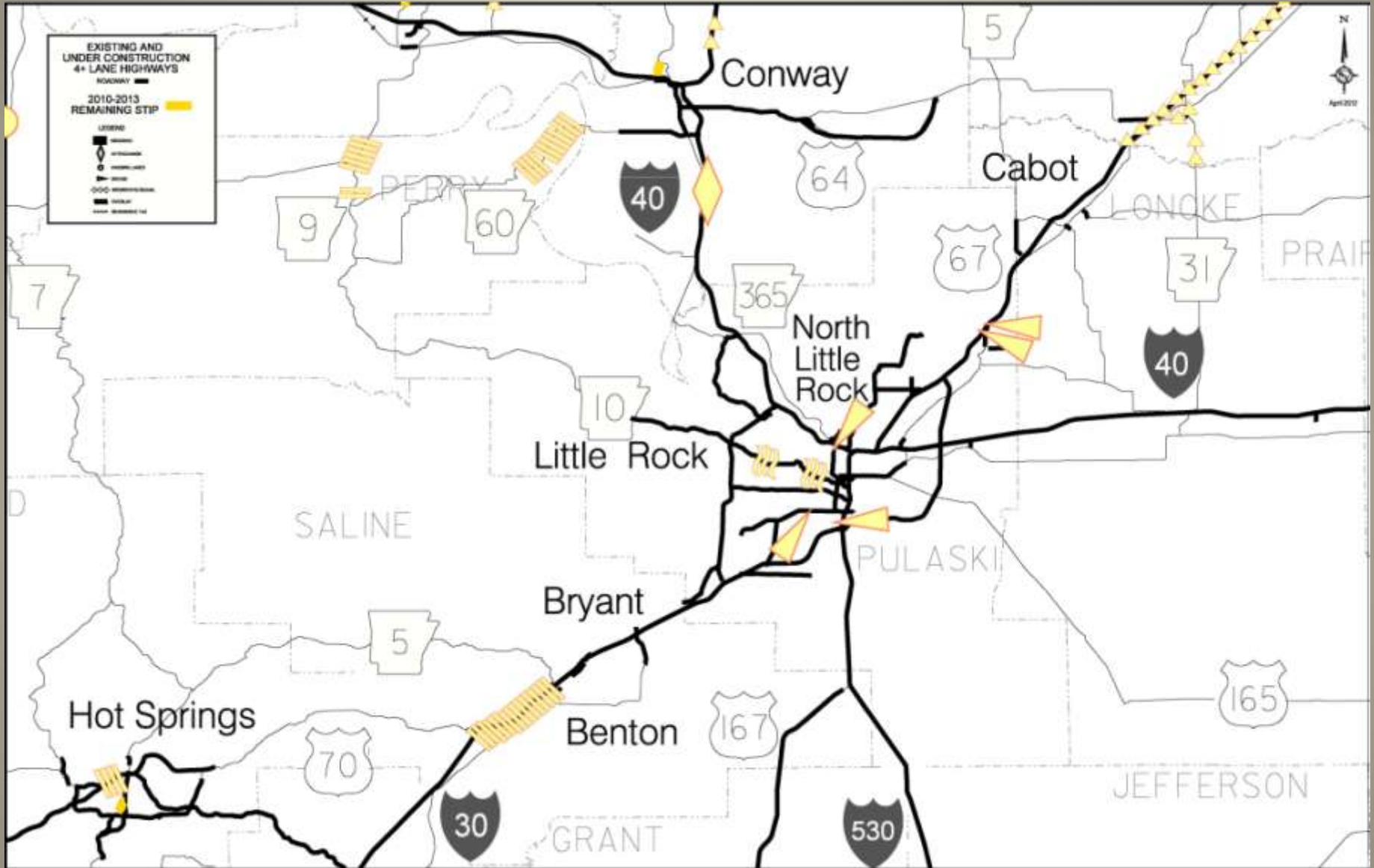


# Temporary 0.5% Sales Tax (Issue #1)

- Bond debt retired over 10 years
- \$1.3 Billion in general obligation bonds
- Tax expires when the bonds are retired
- Four-lane highways
- \$1.8 Billion total program

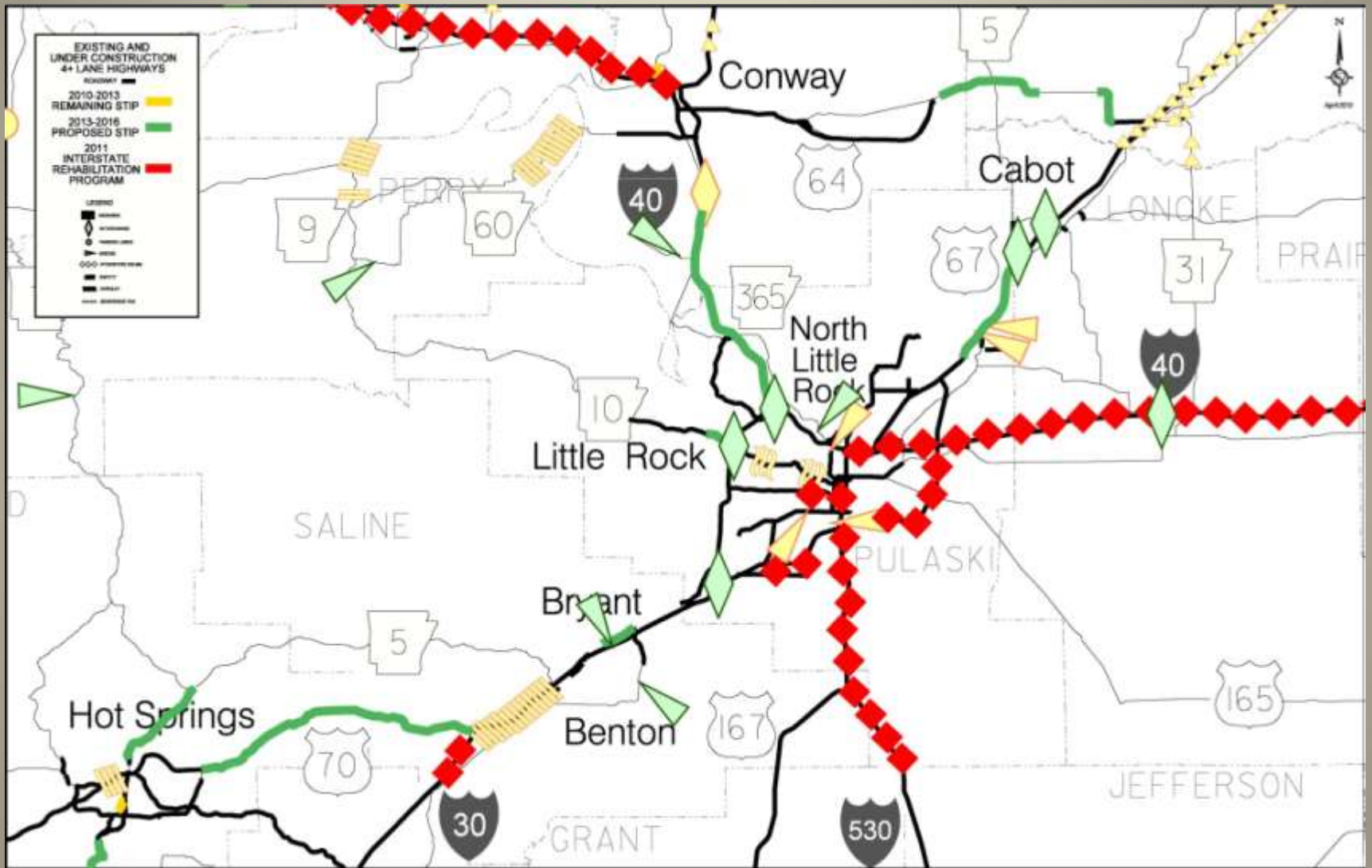


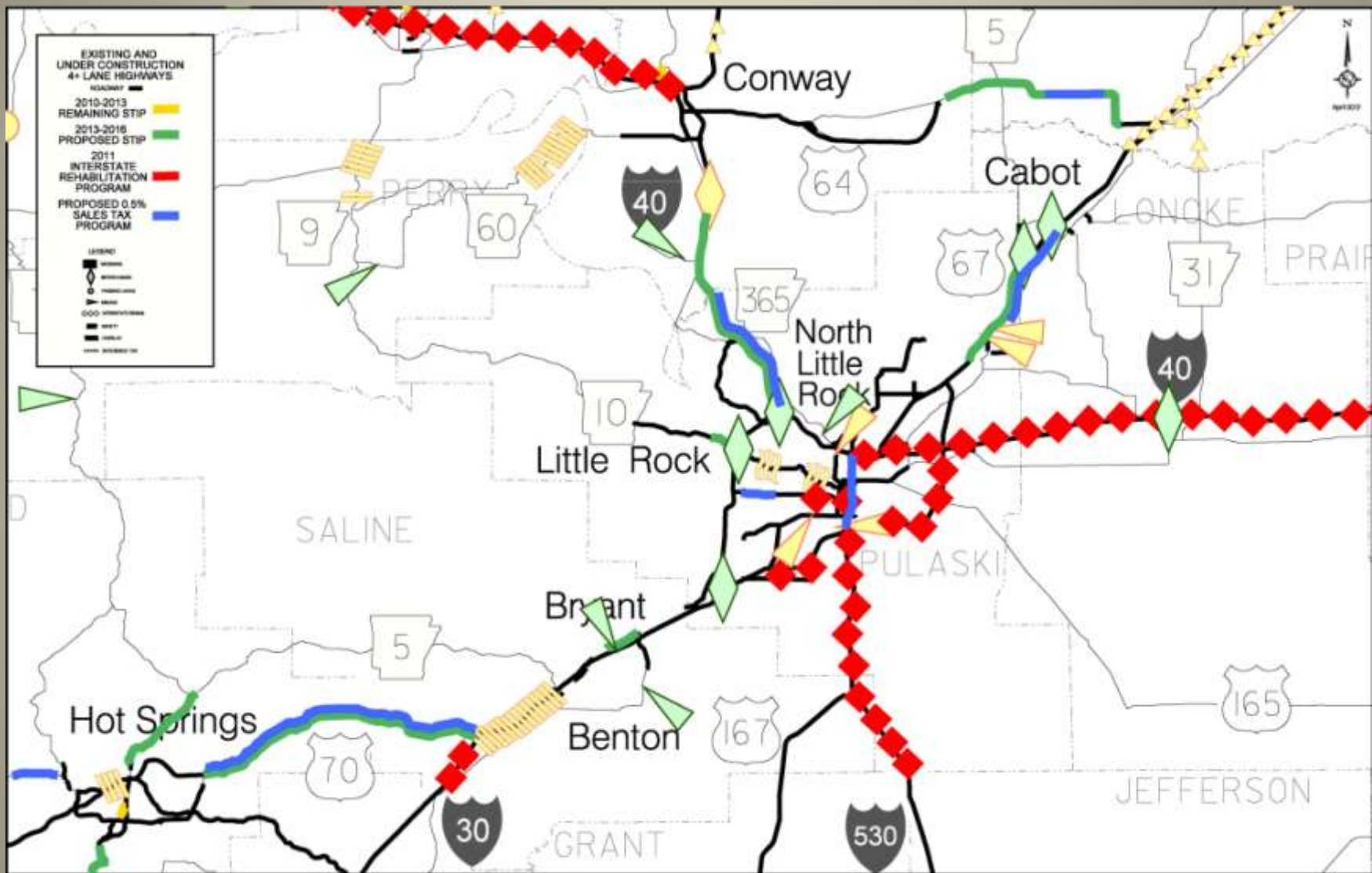




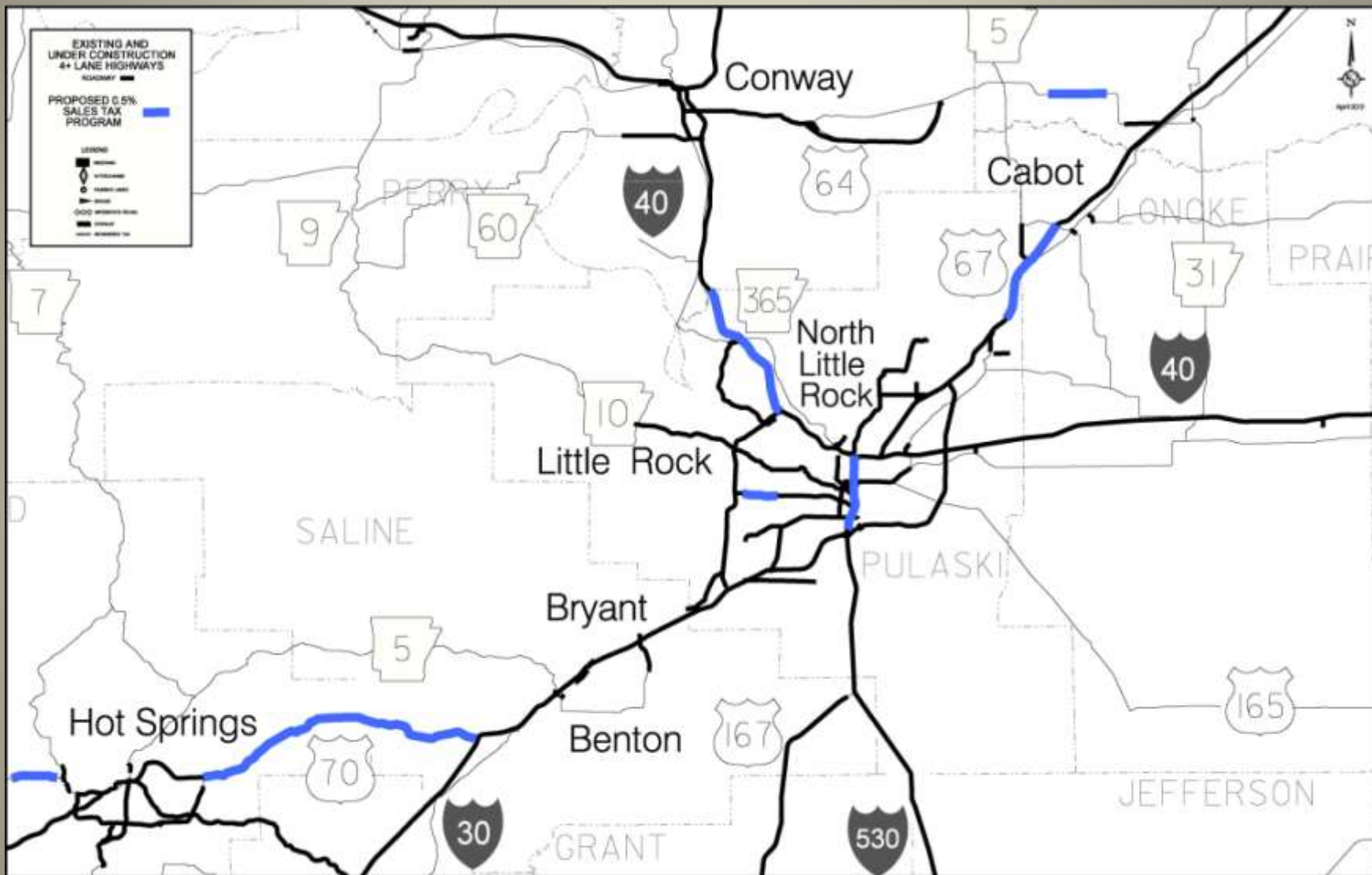


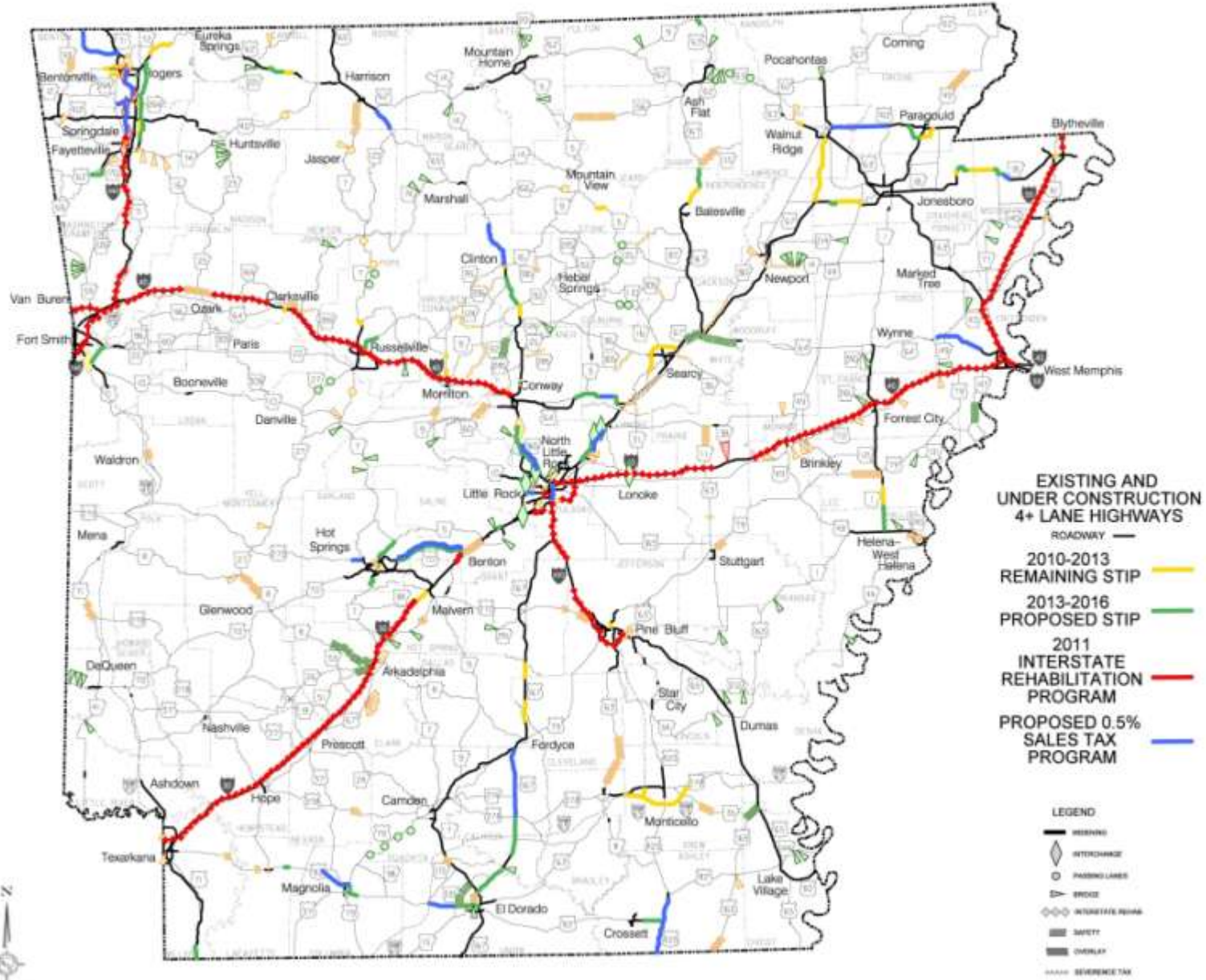
















# Benefits of Temporary 0.5% Tax

- Completion of widening I-40 to six lanes between Conway and North Little Rock;
- Completion of widening U.S. Highway 67 to six lanes from Jacksonville to Cabot;
- Improvements to I-30 connecting Little Rock and North Little Rock, including widening Arkansas River bridge;

# Benefits of Temporary 0.5% Tax

- Completion of widening U. S. Highway 64 to four lanes between Conway and Beebe;
- Completion of widening U. S. Highway 70 to four lanes between I-30 and Hot Springs.

# **Pulaski County Benefits**

	(est. annual)	(est. 10-year)
<b>Pulaski County</b>	<b>\$2,034,383</b>	<b>\$20,343,831</b>
<b>Alexander</b>	<b>\$51,673</b>	<b>\$516,728</b>
<b>Cammack Village</b>	<b>\$13,680</b>	<b>\$136,797</b>
<b>Jacksonville</b>	<b>\$505,222</b>	<b>\$5,052,219</b>
<b>Little Rock</b>	<b>\$3,447,065</b>	<b>\$34,470,652</b>
<b>Maumelle</b>	<b>\$305,709</b>	<b>\$3,057,088</b>
<b>North Little Rock</b>	<b>\$1,109,764</b>	<b>\$11,097,639</b>
<b>Sherwood</b>	<b>\$525,866</b>	<b>\$5,258,661</b>
<b>Wrightsville</b>	<b>\$37,655</b>	<b>\$376,547</b>
<b>Strong</b>	<b>\$9,939</b>	<b>\$99,391</b>





**Visit us at [www.arkansashighways.com](http://www.arkansashighways.com)**