

ARKANSAS STATE HIGHWAY AND TRANSPORTATION DEPARTMENT



National Active & Retired
Federal Employees Association
August 2, 2012

Interstate 430/630 Interchange Improvement Project

The 'Big Rock' Interchange



A BIG Surprise...



**A BIG
Surprise...**



**...A Simple
Solution**

Before 'Big Rock'

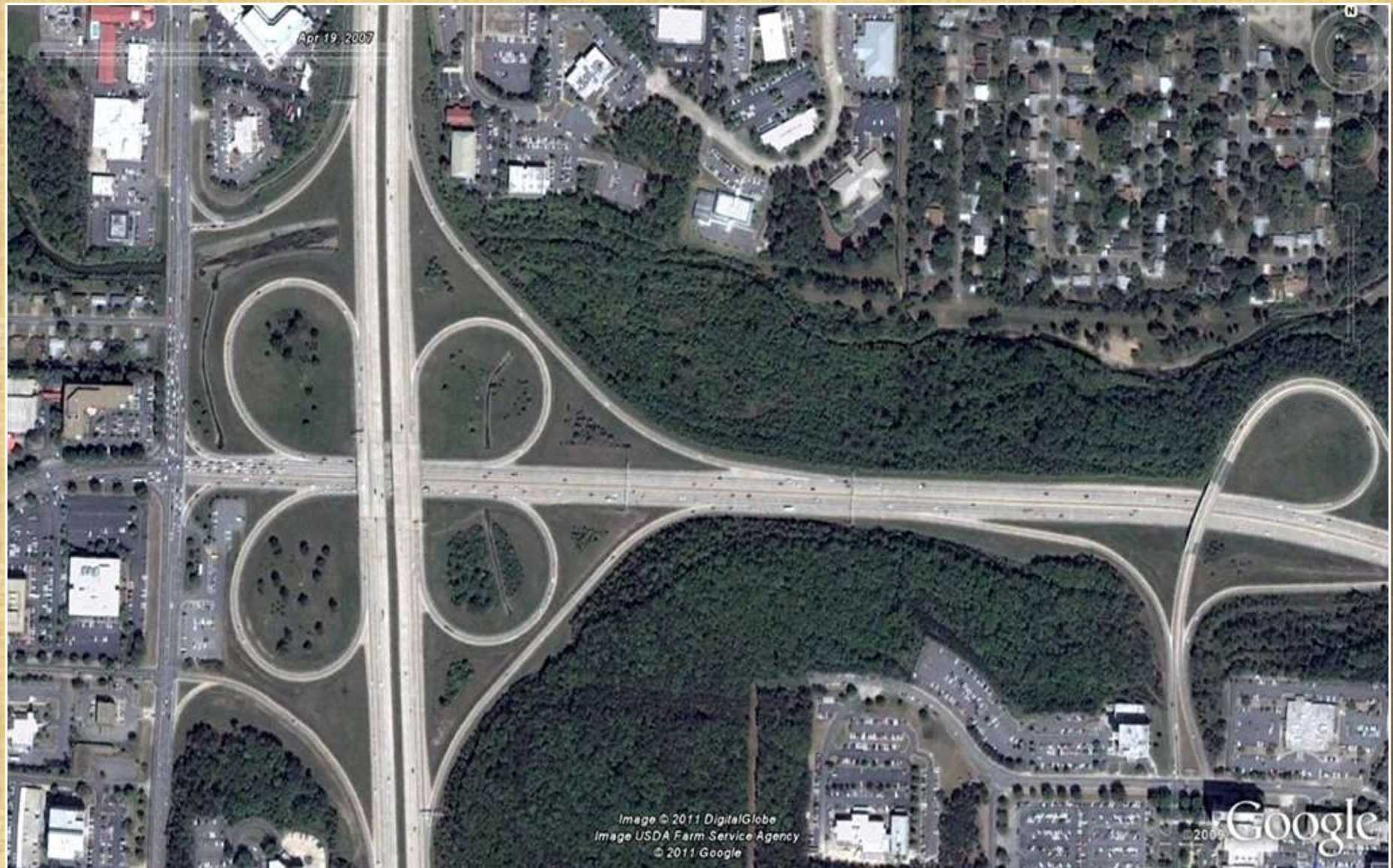


Image © 2011 DigitalGlobe
Image USDA Farm Service Agency
© 2011 Google

© 2009 Google

Before 'Big Rock'



The Plan

Shackleford Road and Financial Center Parkway Overpass

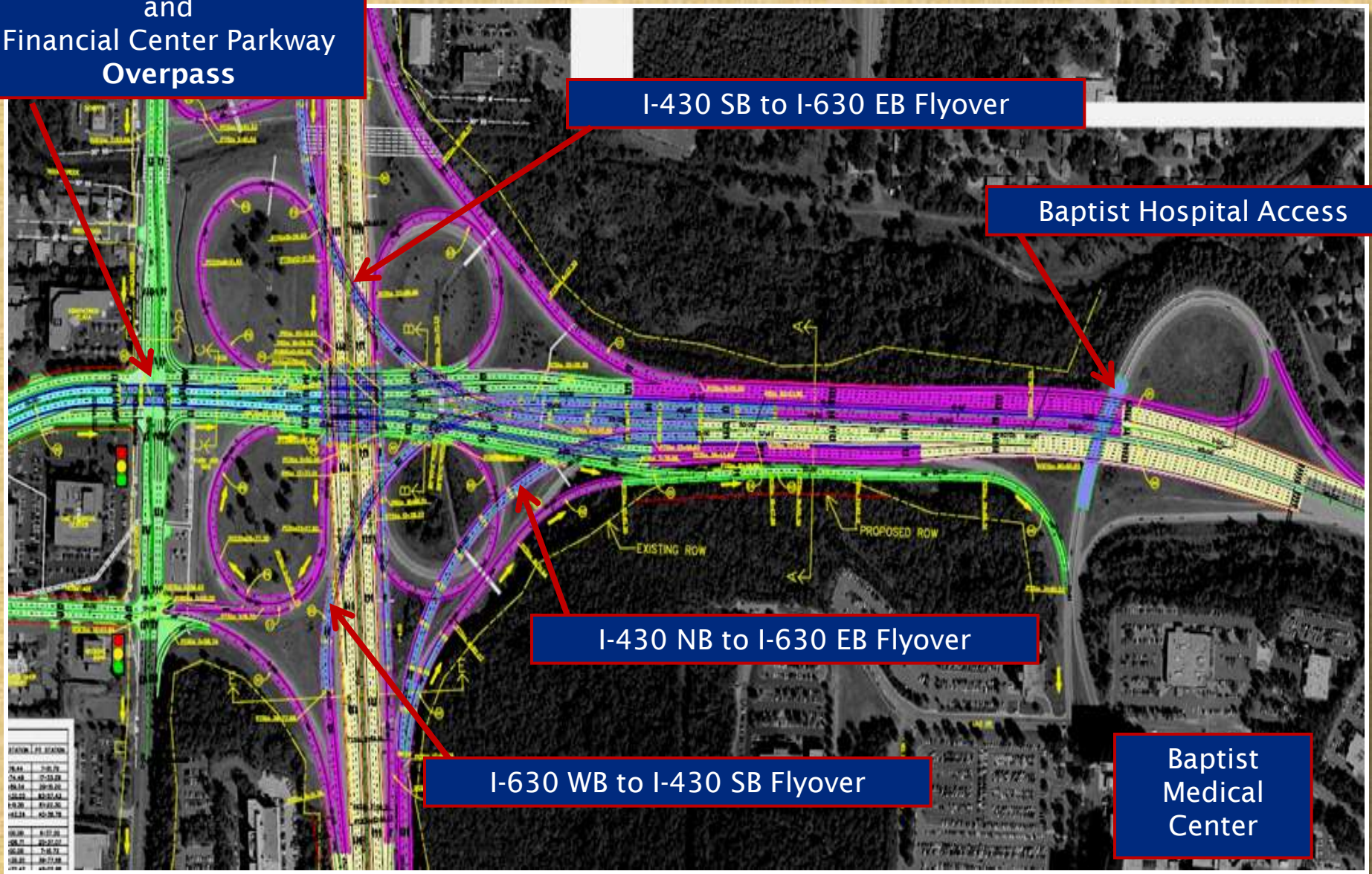
I-430 SB to I-630 EB Flyover

Baptist Hospital Access

I-430 NB to I-630 EB Flyover

I-630 WB to I-430 SB Flyover

Baptist Medical Center



STATIONING	ELEVATION
18+00	75.00
18+10	75.10
18+20	75.20
18+30	75.30
18+40	75.40
18+50	75.50
18+60	75.60
18+70	75.70
18+80	75.80
18+90	75.90
19+00	76.00

Engineers & Architects...



...Working
Together

Building 'Big Rock'



Building 'Big Rock'



Broadway Bridge



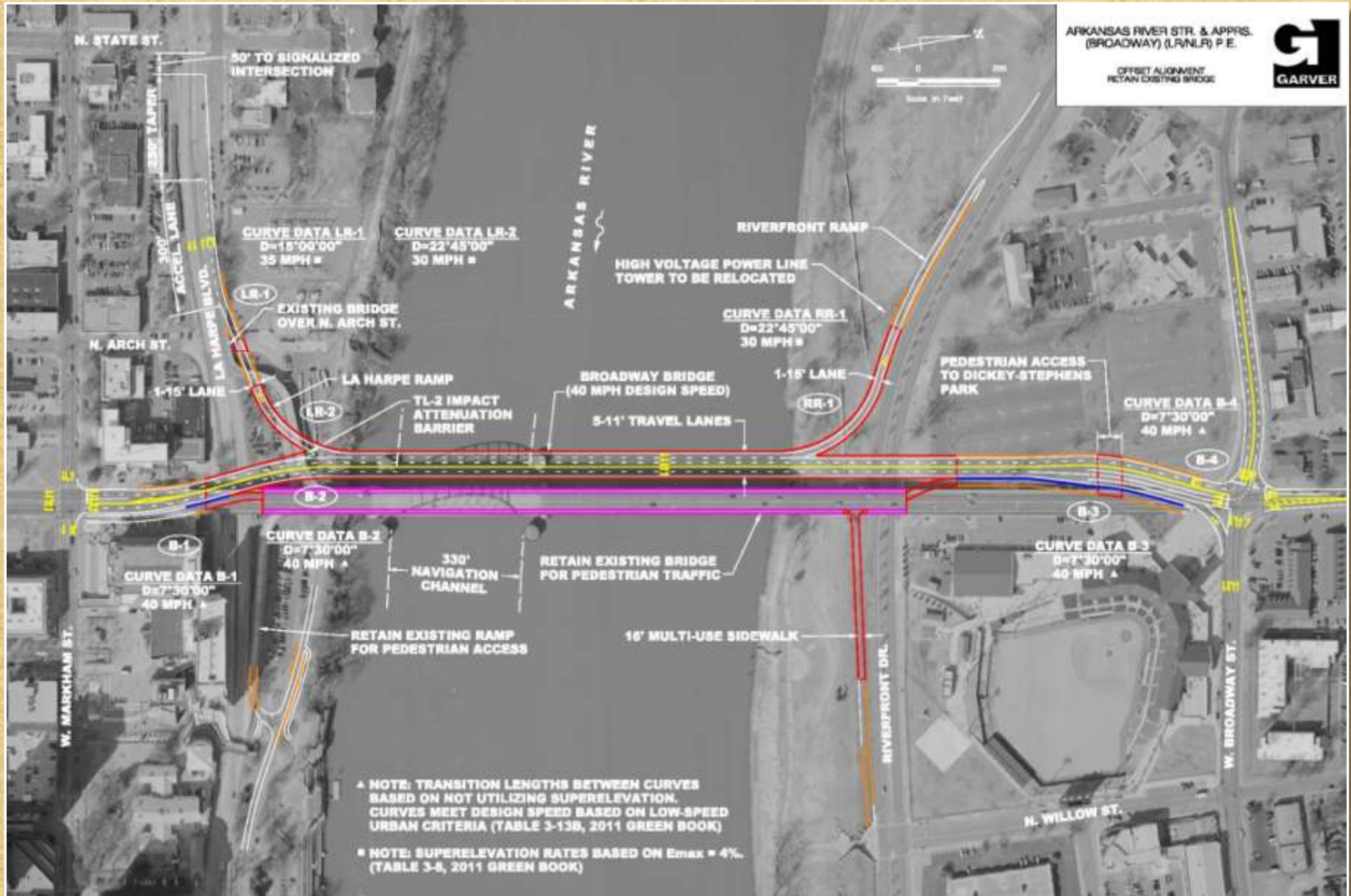
← Single Tied Arch

Plate Girder →



← Dickey-Stephens Access

Broadway Bridge



Broadway Bridge



Broadway Bridge



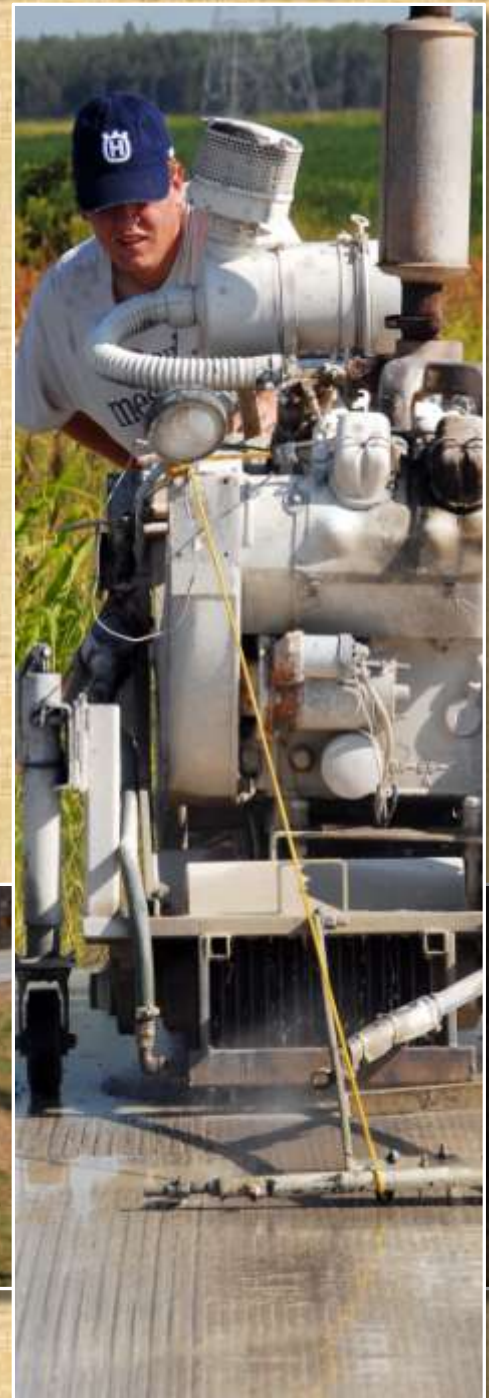
Broadway Bridge



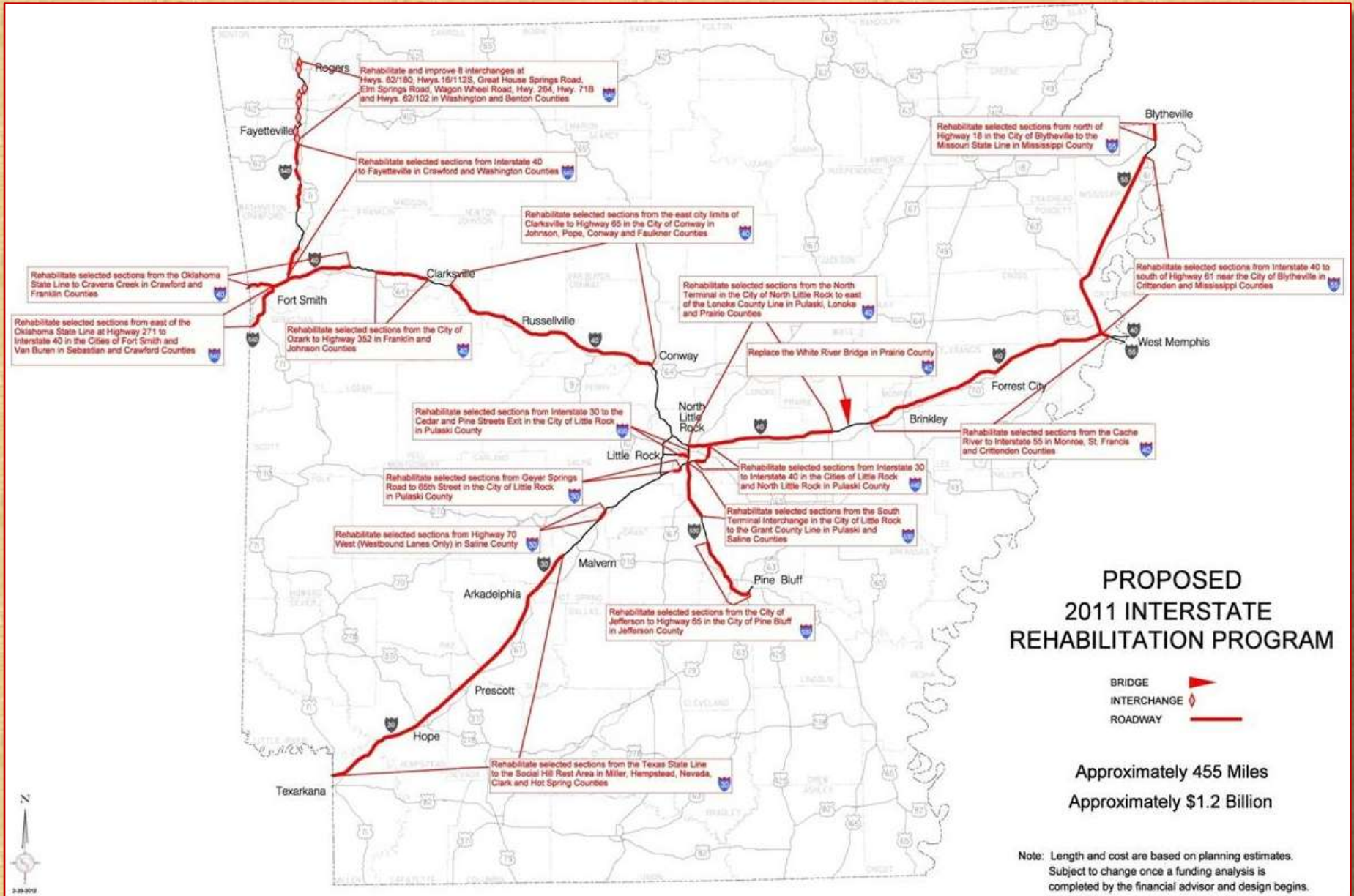
Broadway Bridge



Interstate Rehabilitation Program



Interstate Rehabilitation Program



Interstate Condition



November 6th

Proposed Constitutional Amendment No. 1

"Everybody Benefits..."



Temporary 0.5% Sales Tax

HJR 1001

- November 6, 2012 election ballot
- **Temporary Increase**
- Does not apply to groceries, medicine, fuel
- \$230m annually (\$160m/\$35m/\$35m)
- State Aid Street Fund for City Streets



Temporary 0.5% Sales Tax

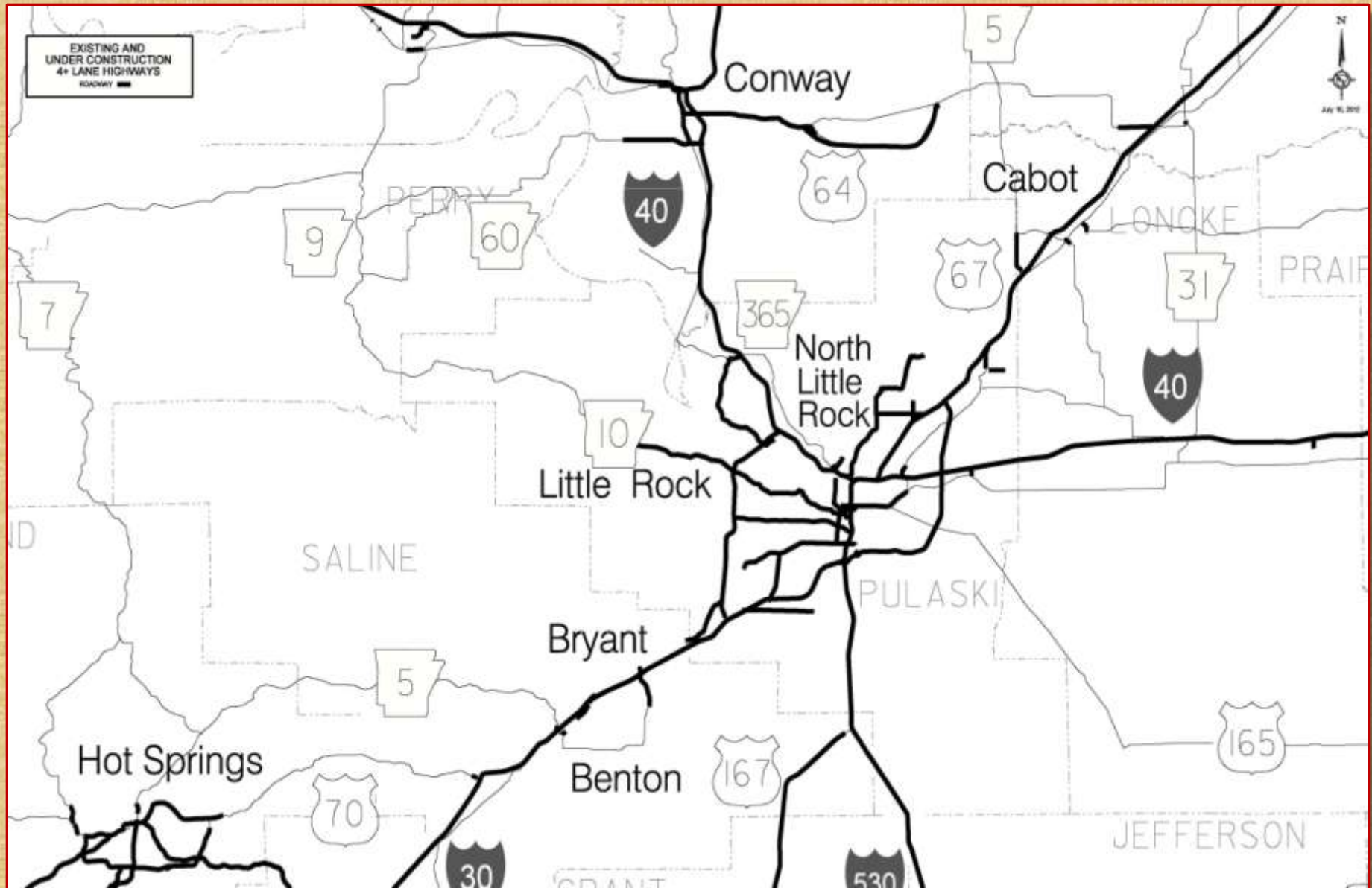
HJR 1001

- Bond debt retired over 10 years
- \$1.3 Billion in general obligation bonds
- Tax expires when the bonds are retired
- Four-lane highways
- \$1.8 Billion program supports 40,000 jobs



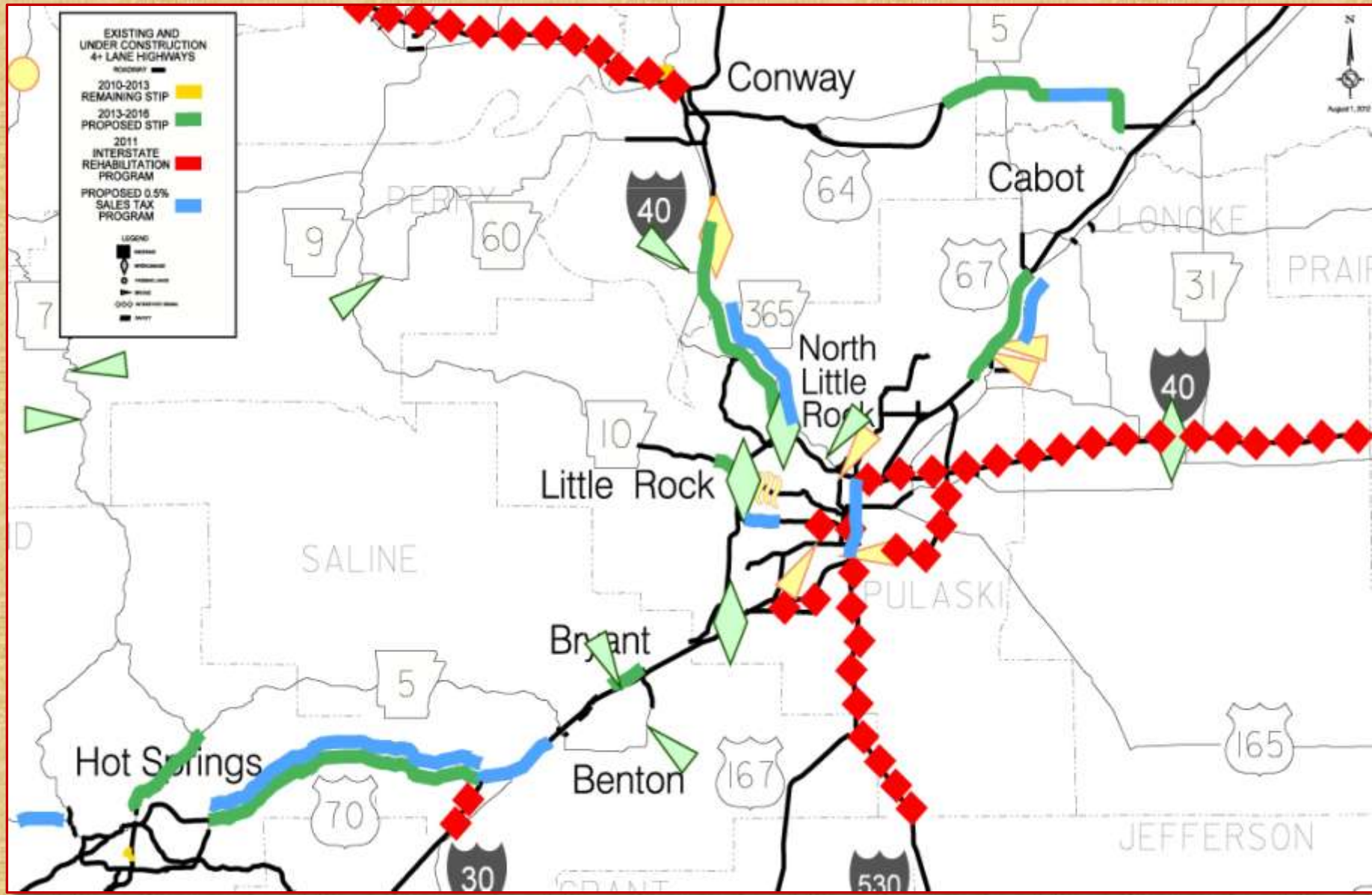
Existing/Under Construction

Central Arkansas



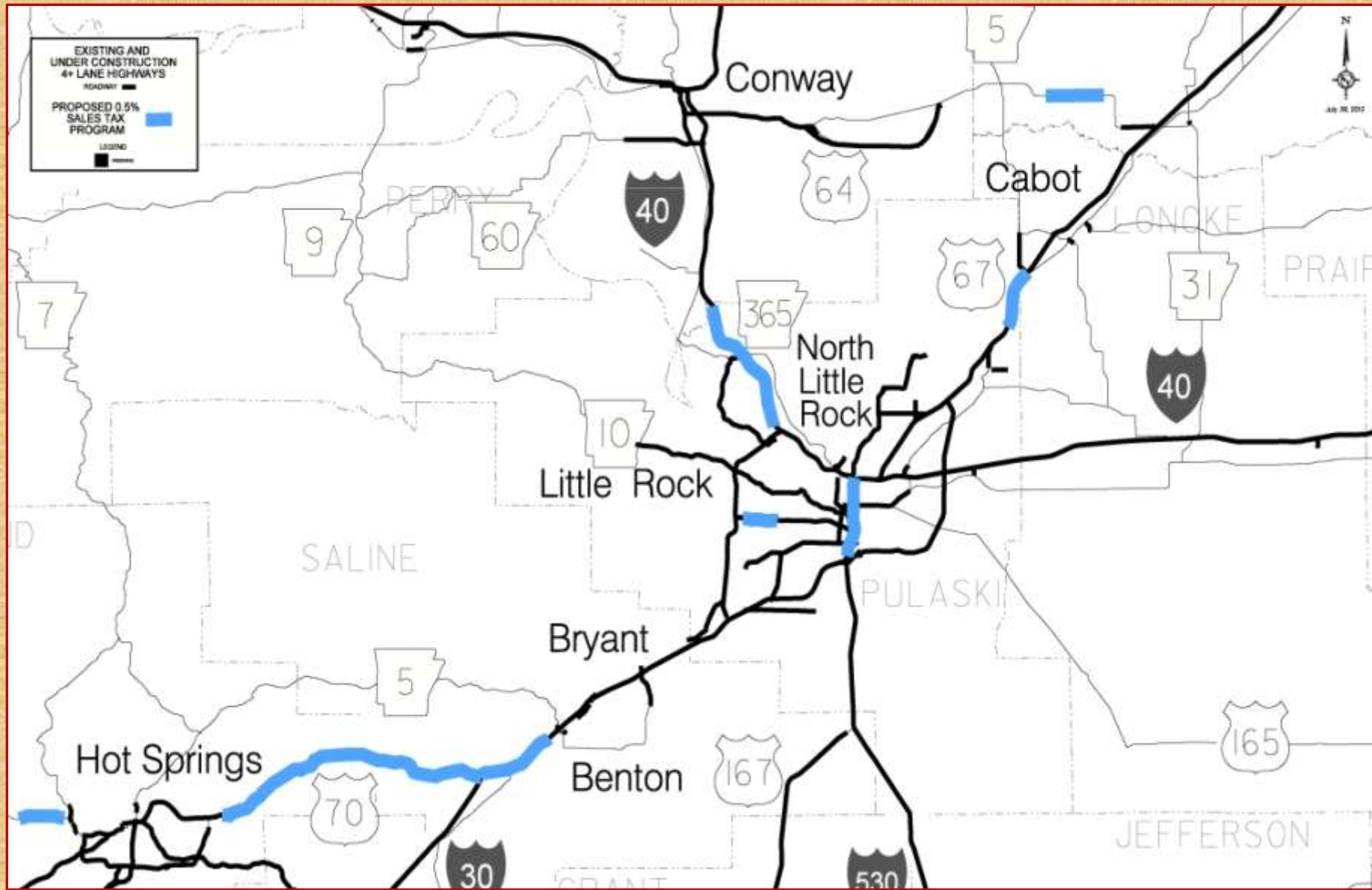
Funded by Temporary 0.5% Sales Tax

Central Arkansas



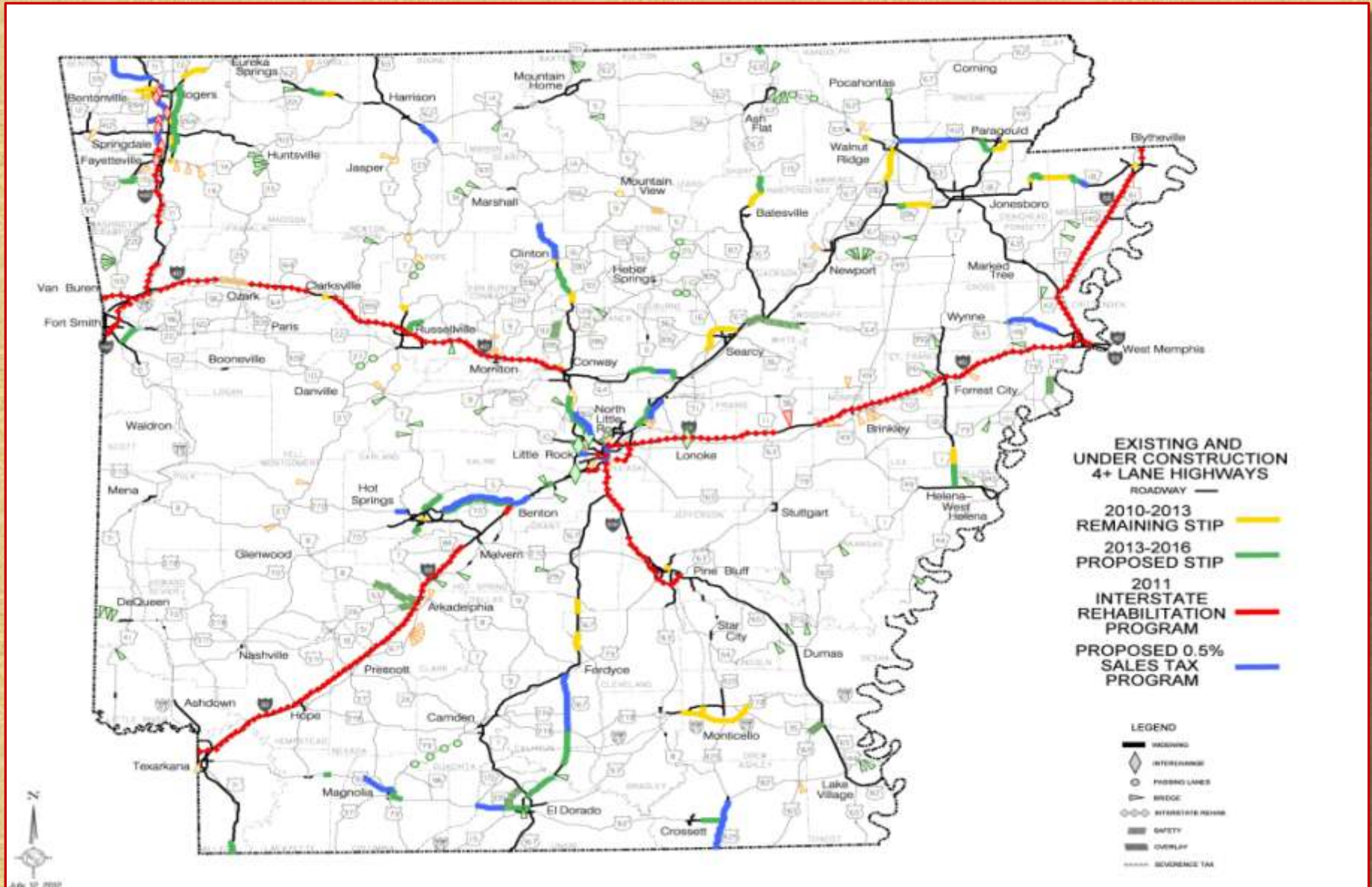
Funded by Temporary 0.5% Sales Tax

Central Arkansas



Funded by Temporary 0.5% Sales Tax

Statewide



Benefits of Temporary 0.5% Tax



Completion of widening to six lanes between Conway and North Little Rock



Improvements to I-30 connecting Little Rock and North Little Rock, including widening Arkansas River bridge



Widening of I-630 between University Avenue and Baptist Medical Center



Benefits of Temporary 0.5% Tax



Completion of widening to six lanes from Jacksonville to Cabot



Completion of widening to four lanes between I-30 and Hot Springs



Completion of widening to four lanes between Conway and Beebe



'Everybody Benefits...'

Cities & Counties Will Split Nearly \$700 Million

Pulaski County

	<u>Annual</u>	<u>10-Year Total</u>
County Turnback	\$ 2,034,383	\$ 20,343,831
City Turnback		
Alexander	\$ 51,673	\$ 516,728
Cammack Village	\$ 13,680	\$ 136,797
Jacksonville	\$ 505,222	\$ 5,052,219
Little Rock	\$ 3,447,065	\$ 34,470,652
Maumelle	\$ 305,709	\$ 3,057,088
North Little Rock	\$ 1,109,764	\$ 11,097,639
Sherwood	\$ 525,866	\$ 5,258,661
Wrightsville	\$ 37,655	\$ 376,547
City and County Turnback Total	\$ 8,031,016	\$ 80,310,162

Saline County

	<u>Annual</u>	<u>10-Year Total</u>
County Turnback	\$ 859,610	\$ 8,596,100
City Turnback		
Bauxite	\$ 8,674	\$ 86,745
Benton	\$ 546,492	\$ 5,464,925
Bryant	\$ 297,248	\$ 2,972,480
Haskell	\$ 71,070	\$ 710,702
Shannon Hills	\$ 55,983	\$ 559,834
Traskwood	\$ 9,227	\$ 92,267
City and County Turnback Total	\$ 1,848,305	\$ 18,483,052



MOVE ARKANSAS FORWARD

Proposed Constitutional
Amendment #1

Fact Sheet
Four-Lane Projects
City and County Turnback Revenue

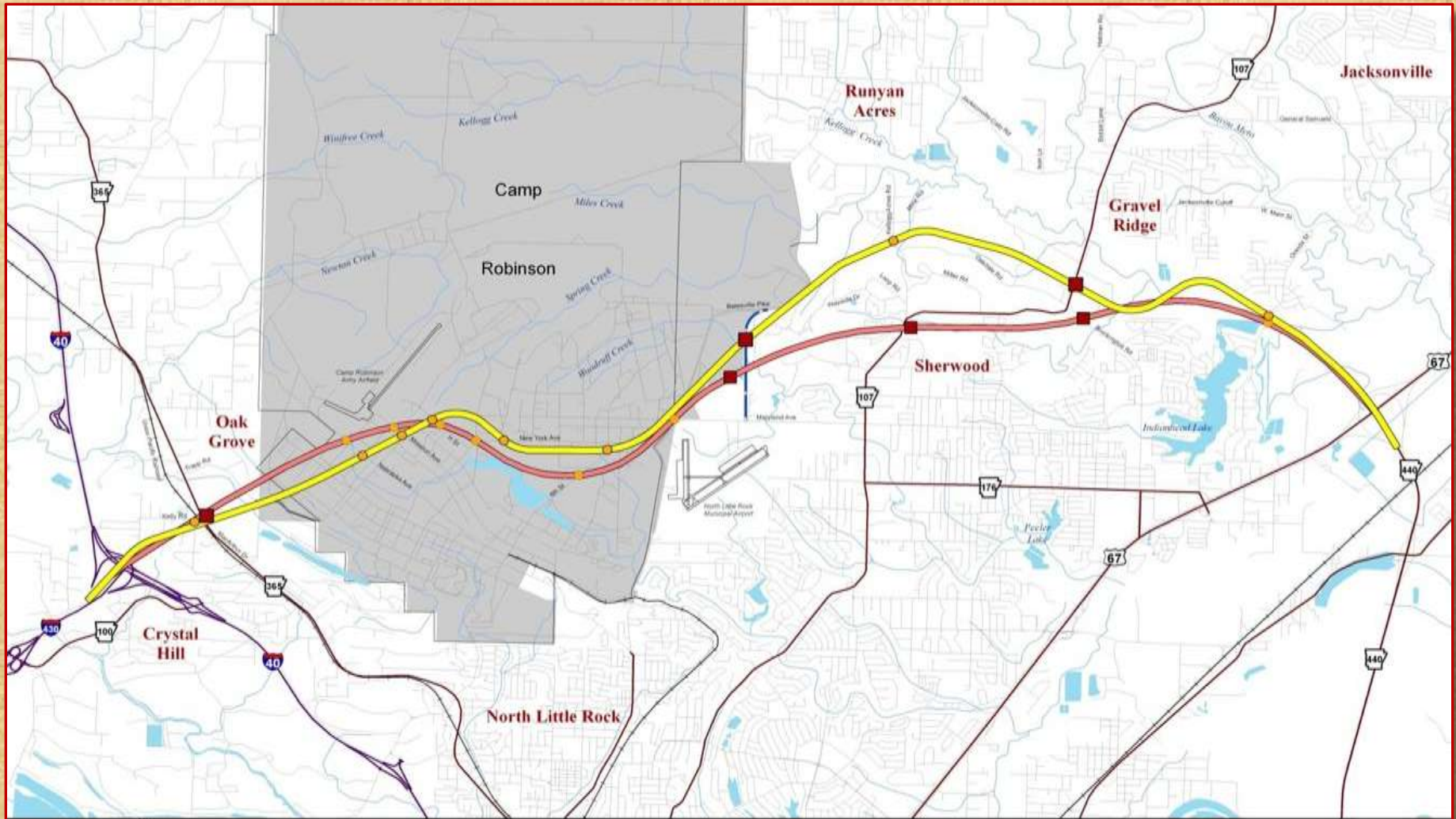
“Nothing is more expensive than a missed opportunity.”

-H. Jackson Brown, Jr.
Author



North Belt Freeway

Preferred Routes



Map Date - June 6, 2012



AHFD - Environmental GIS - Basol

PRELIMINARY
SUBJECT TO REVISION

Selected Alternative
North Belt Freeway

PRELIMINARY
SUBJECT TO REVISION

Legend

- Selected Alternative*
- 1994 Alternative
- Interchange
- Grade Separation
- Relocated Batesville Pike

*Colored Line Represent a 300 ft. Wide Corridor