

# Arkansas State Highway and Transportation Department



**Hot Springs Village Kiwanis Club**

July 11, 2013



# The Facts:

➤ **12<sup>th</sup>** Largest System in USA

➤ **43<sup>rd</sup>** Highway Revenue Per Mile



# How We Compare

State	Mileage
<b>Arkansas</b>	<b>16,400</b>
Illinois	16,040
California	15,205
New York	14,969
Tennessee	13,881
Florida	12,084



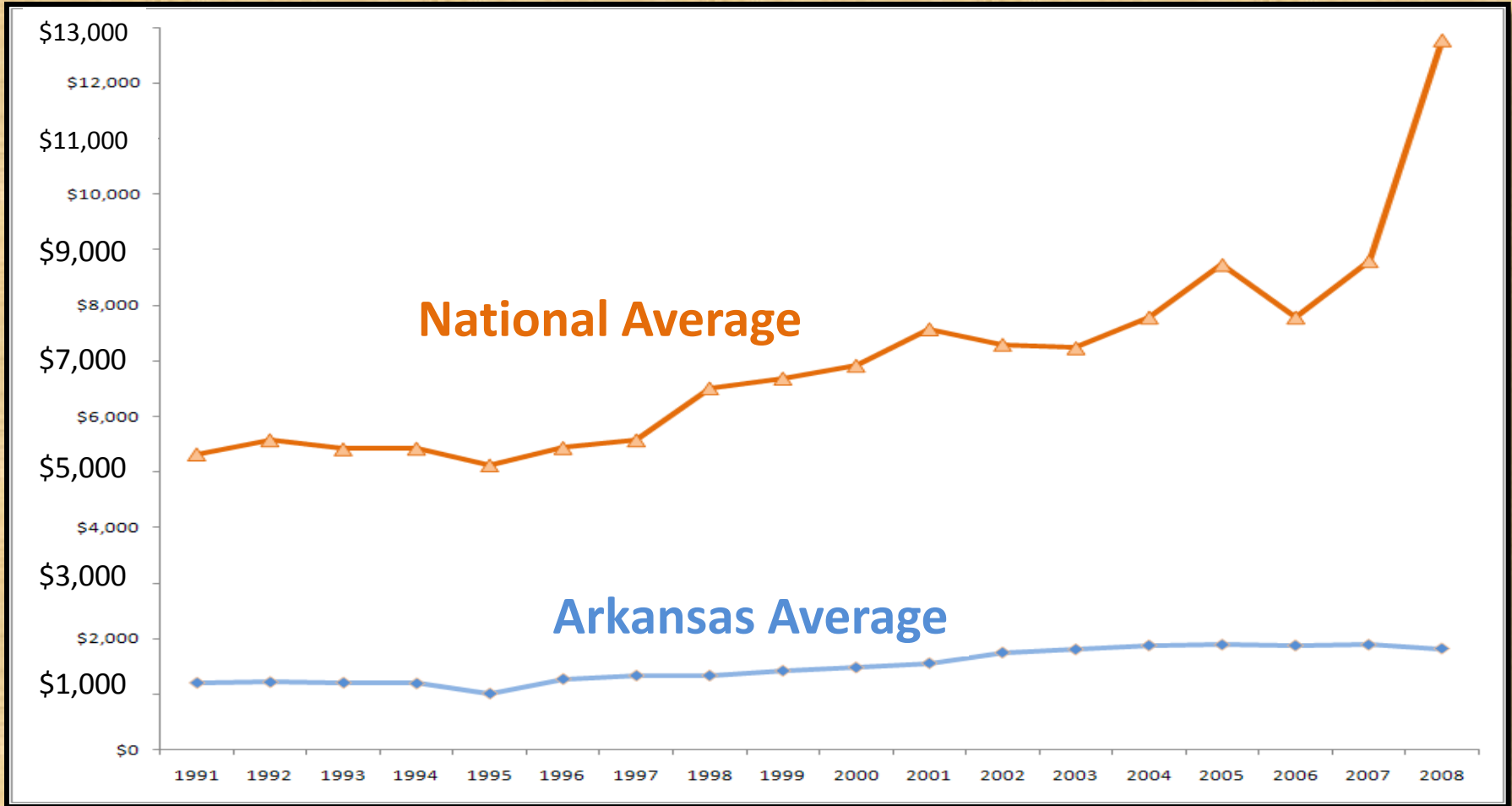
# How We Compare

State	Mileage	Revenue Per Mile
<b>Arkansas</b>	<b>16,400</b>	<b>\$58,536</b>
Illinois	16,040	\$252,000
California	15,205	\$682,000
New York	14,969	\$237,000
Tennessee	13,881	\$108,000
Florida	12,084	\$694,532

# How We Compare

State	Mileage	Admin. Cost Per Mile
<b>Arkansas</b>	<b>16,400</b>	<b>\$1,821</b>
Illinois	16,040	\$8,830
California	15,205	\$109,417
New York	14,969	\$84,062
Tennessee	13,881	\$11,905
Florida	12,084	\$16,985

# AHTD Administrative Costs Per Mile



**National Average \$12,772/mile**

**Arkansas \$1,821/mile**

**Surrounding States' Average  
\$5,342/mile**

**Arkansas' Rank = 49<sup>th</sup>**

# Recent Voter Approved Programs

November 2011

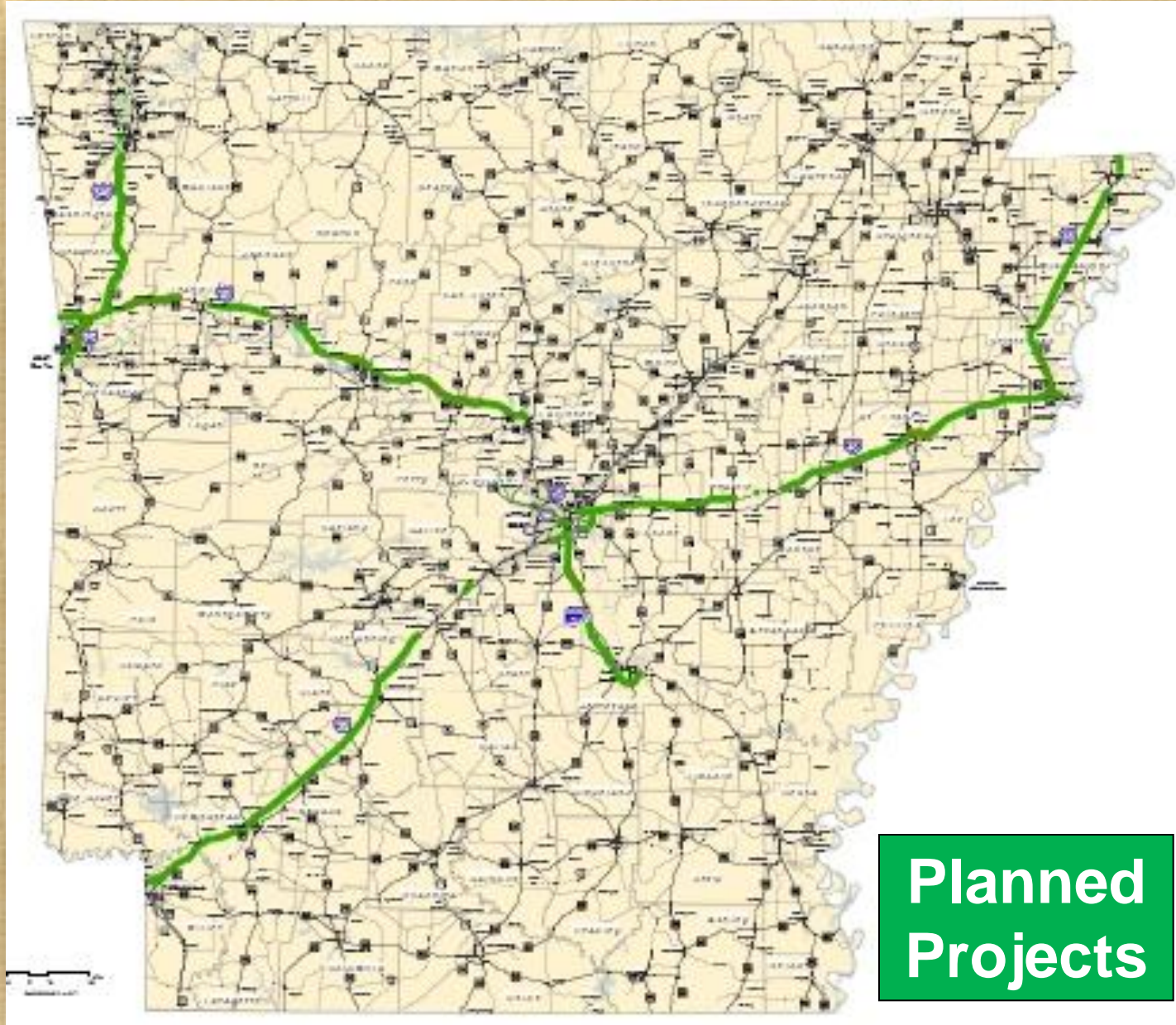
Interstate Rehabilitation Program

November 2012

Connecting Arkansas Program



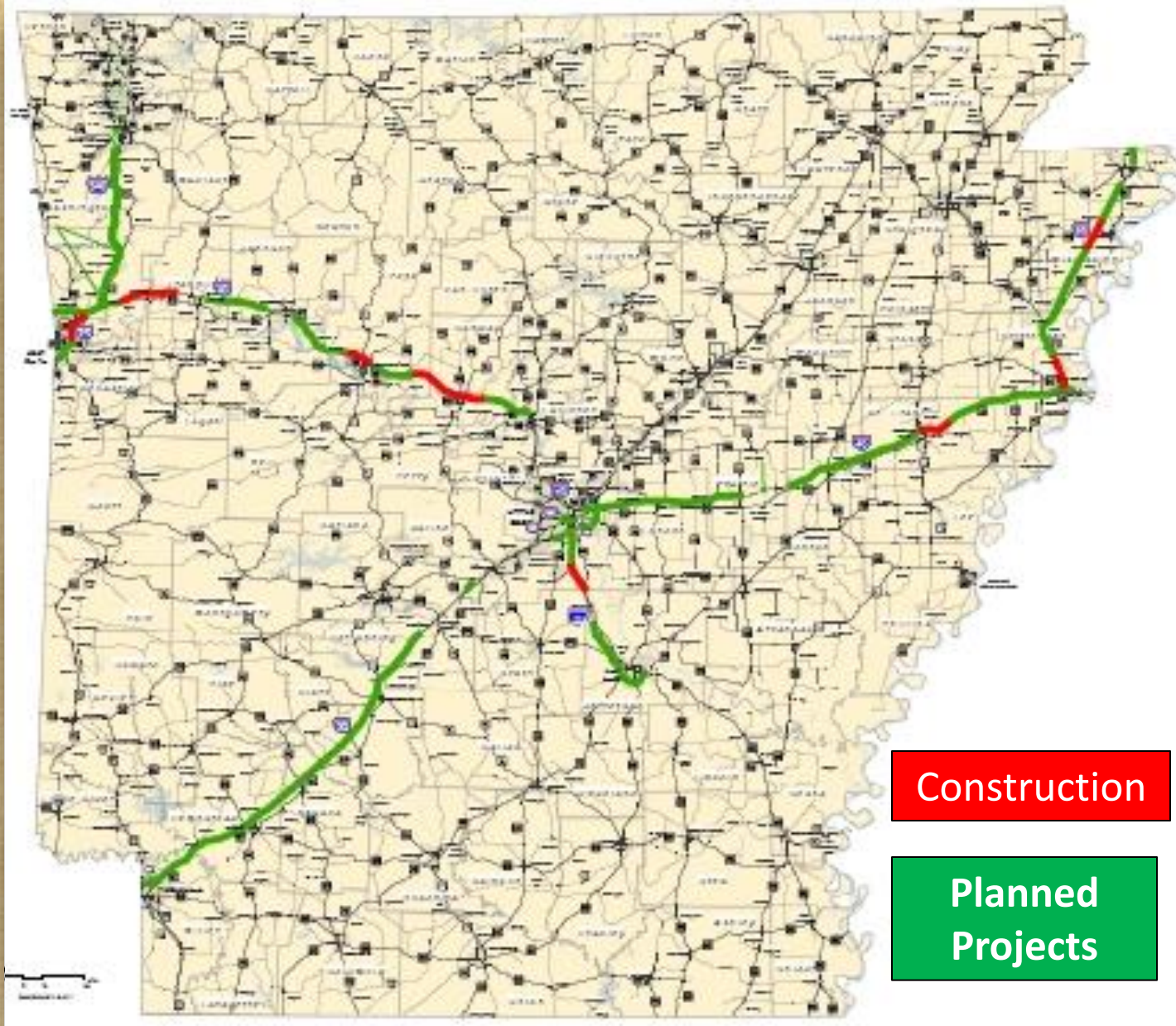
# Interstate Rehabilitation Program



**Planned  
Projects**



# Interstate Rehabilitation Program



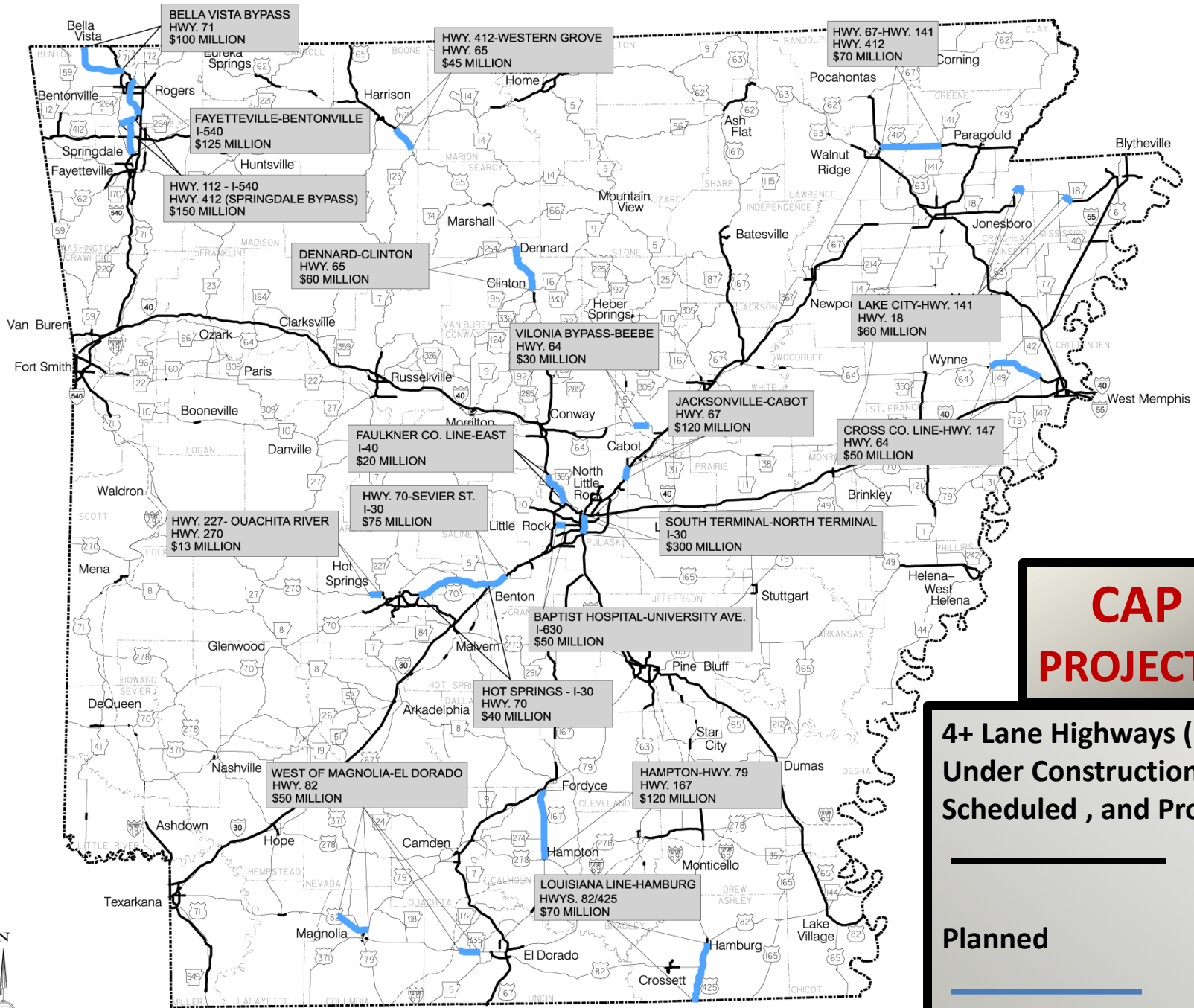
Construction

Planned  
Projects



# Connecting Arkansas Program

**Connects Arkansas  
Increases Capacity  
10-Year Revenue Cap**



# CAP PROJECTS

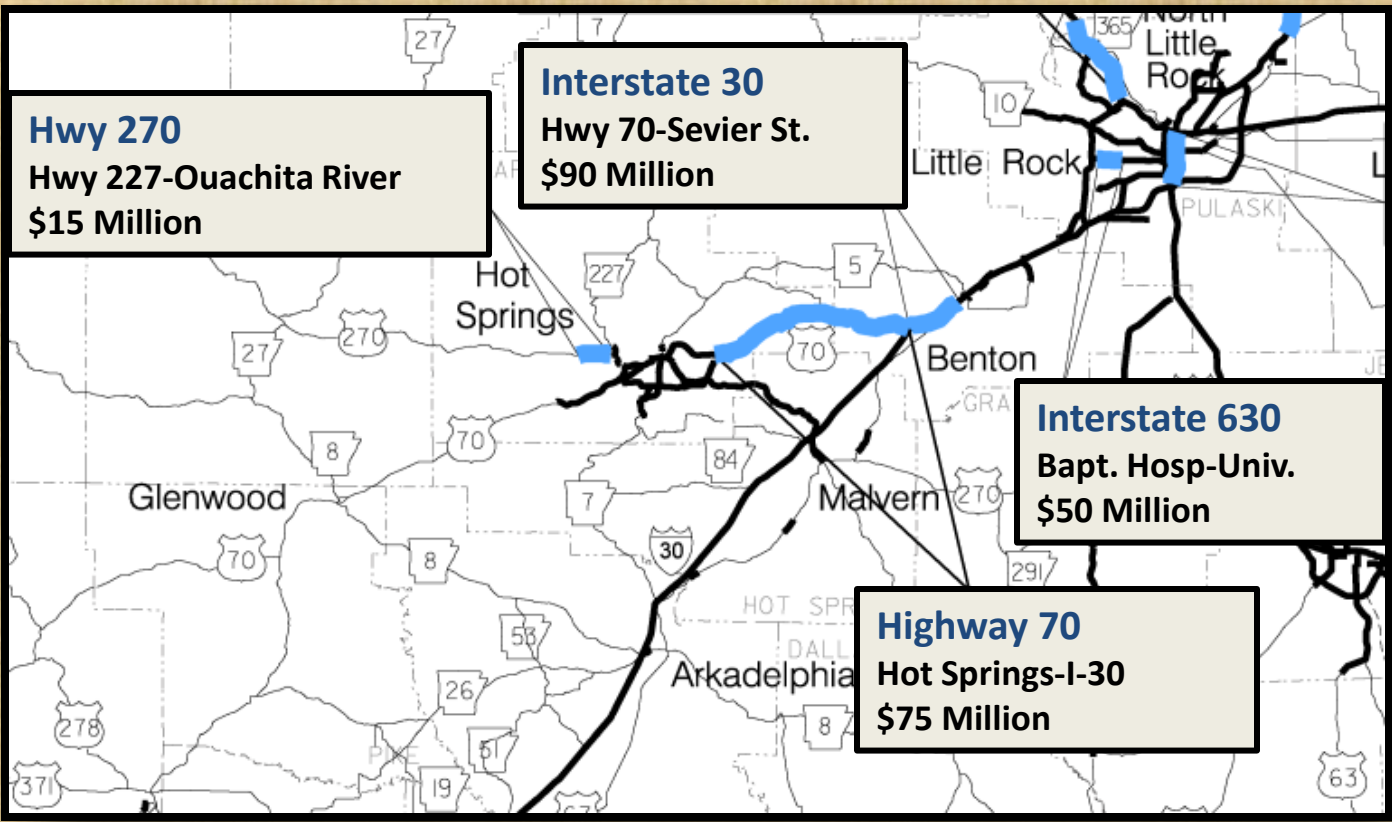
**4+ Lane Highways (Existing, Under Construction, Scheduled , and Proposed)**

---

**Planned**

---





# CAP Projects

## *Regional View*

4+ Lane Highways (Existing, Under Construction, Scheduled, and Proposed)

Planned





# Garland County Turnback Funds

**\$874,885 Annually**

**\$8,748,848 Cumulative**

**Connecting Arkansas  
Program**





# Garland County Turnback Funds

City	Annual	Cumulative
Fountain Lake	\$8,959	\$89,595
Hot Springs	\$626,861	\$6,268,606
Lonsdale	\$1,674	\$16,743
Mountain Pine	\$13,715	\$137,153
<b>Total</b>	<b>\$651,210</b>	<b>\$6,512,097</b>



# Garland County Construction

Projects	Miles	Cost
Completed	122	\$95,239,703
Under Construction	8	\$27,121,877
Planned	44	\$287,074,401
<b>Total</b>	<b>174</b>	<b>\$409,435,981</b>





# Saline County Turnback Funds

**\$859,610 Annually**

**\$8,596,100 Cumulative**

**Connecting Arkansas  
Program**





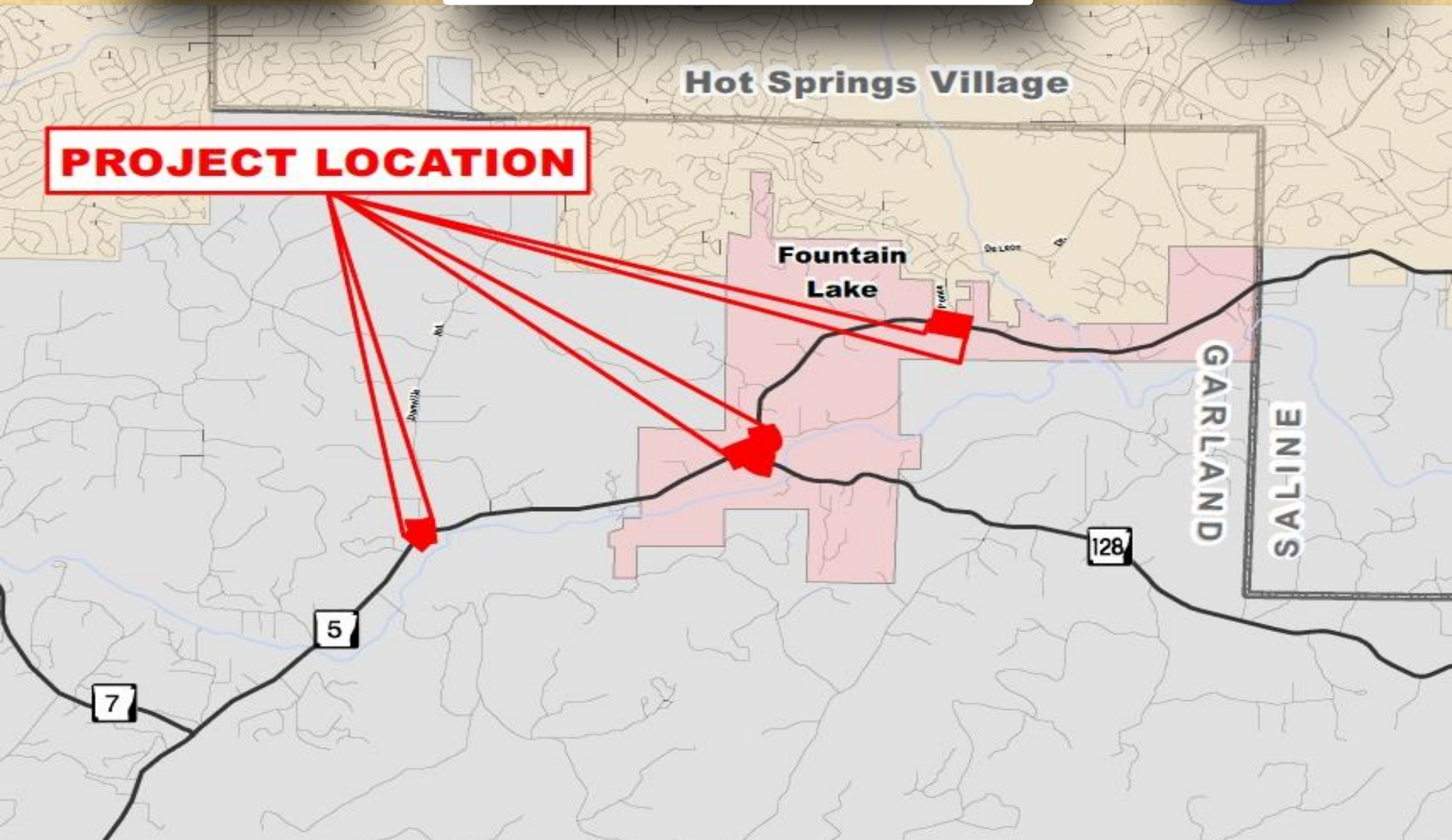
# Saline County Construction

Projects	Miles	Cost
Completed	74	\$150,847,527
Under Construction	16	\$23,185,100
Planned	35	\$159,059,491
<b>Total</b>	<b>125</b>	<b>\$333,092,118</b>





**Safety Improvement**  
**Cost: \$3,490,333**  
**Comp: July 2013**





# Safety Improvement Left Turn Lanes at Balboa Entrance





# Safety Improvement Realigning curves at Highway 128





# Highway



# Study





*Highway*



*Study*

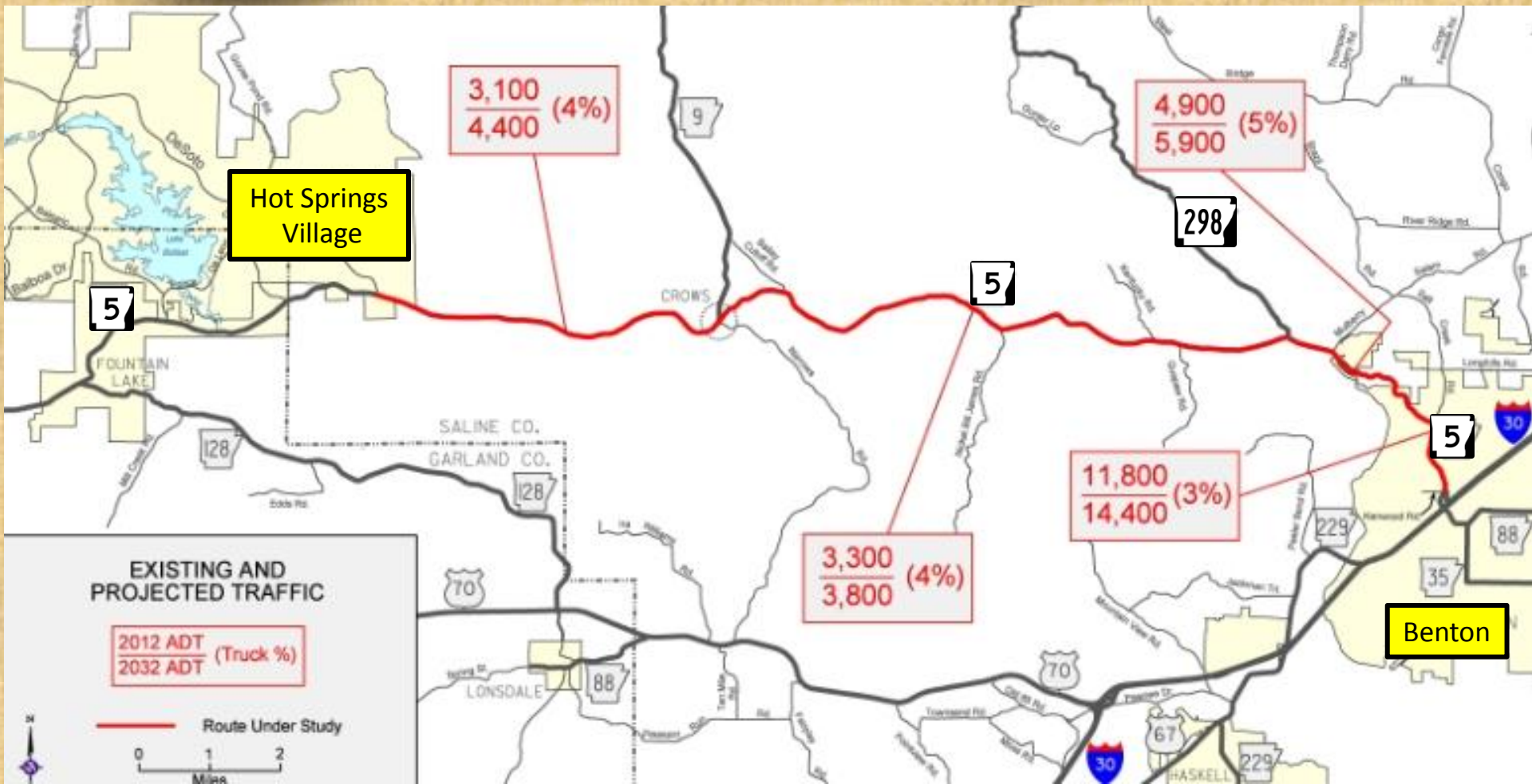




# Highway

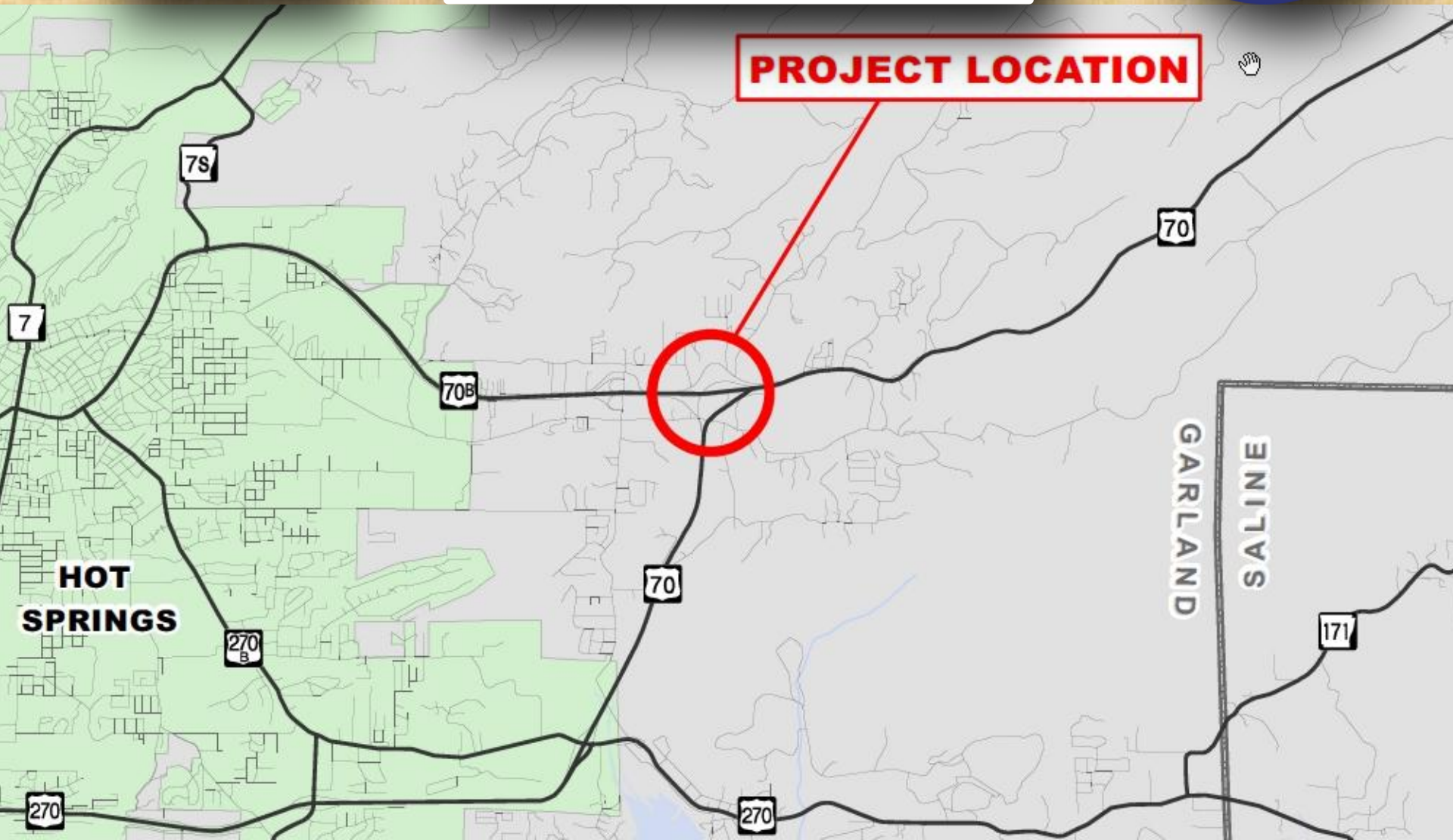


# Study





**Interchange Work**  
**Cost: \$6,949,177**  
**Comp: Substantially**







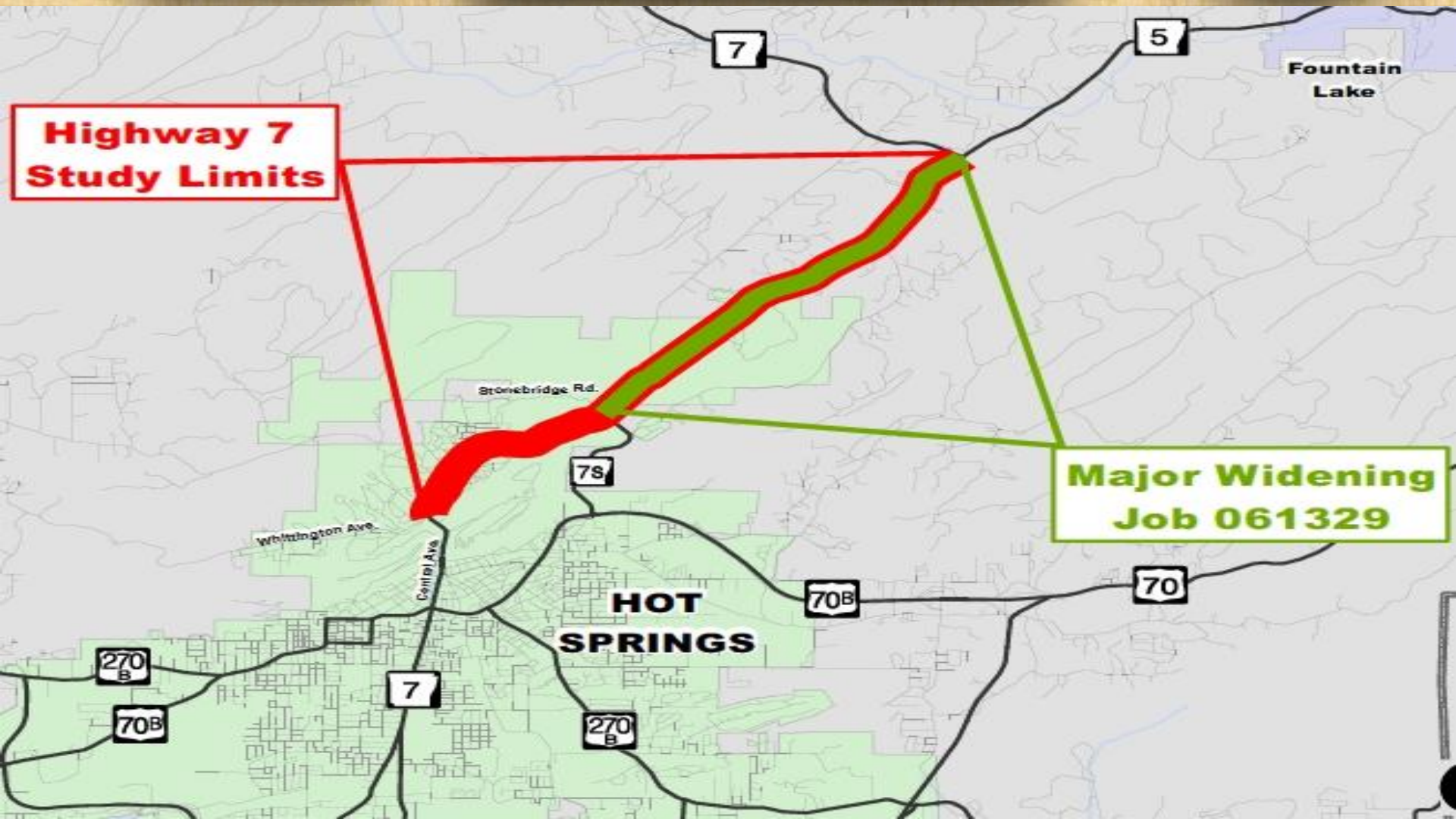
# Interchange Work

Cost: \$6,949,177



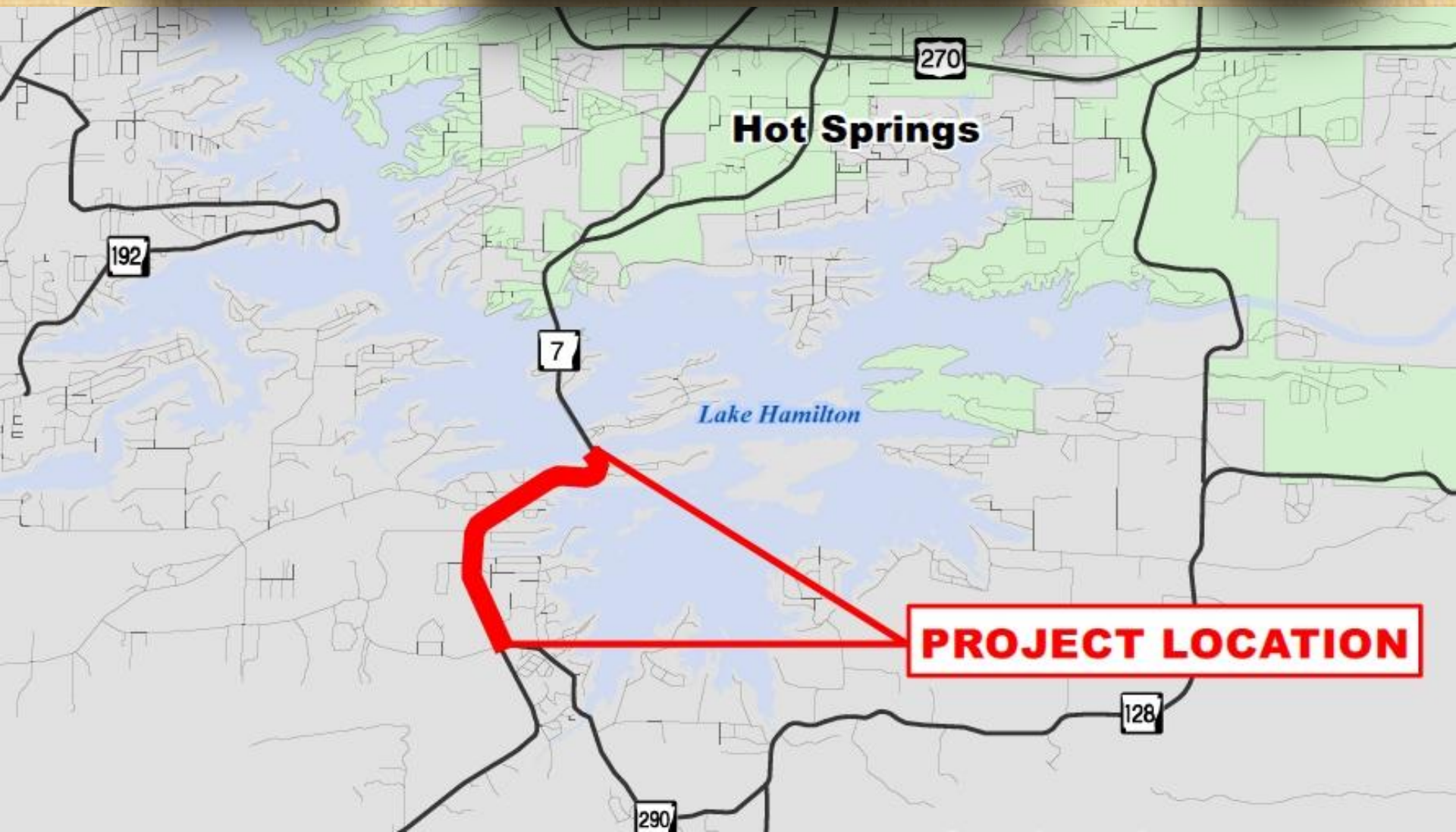


**Major Widening  
Est. Award: 2016  
Cost: \$10 Million**



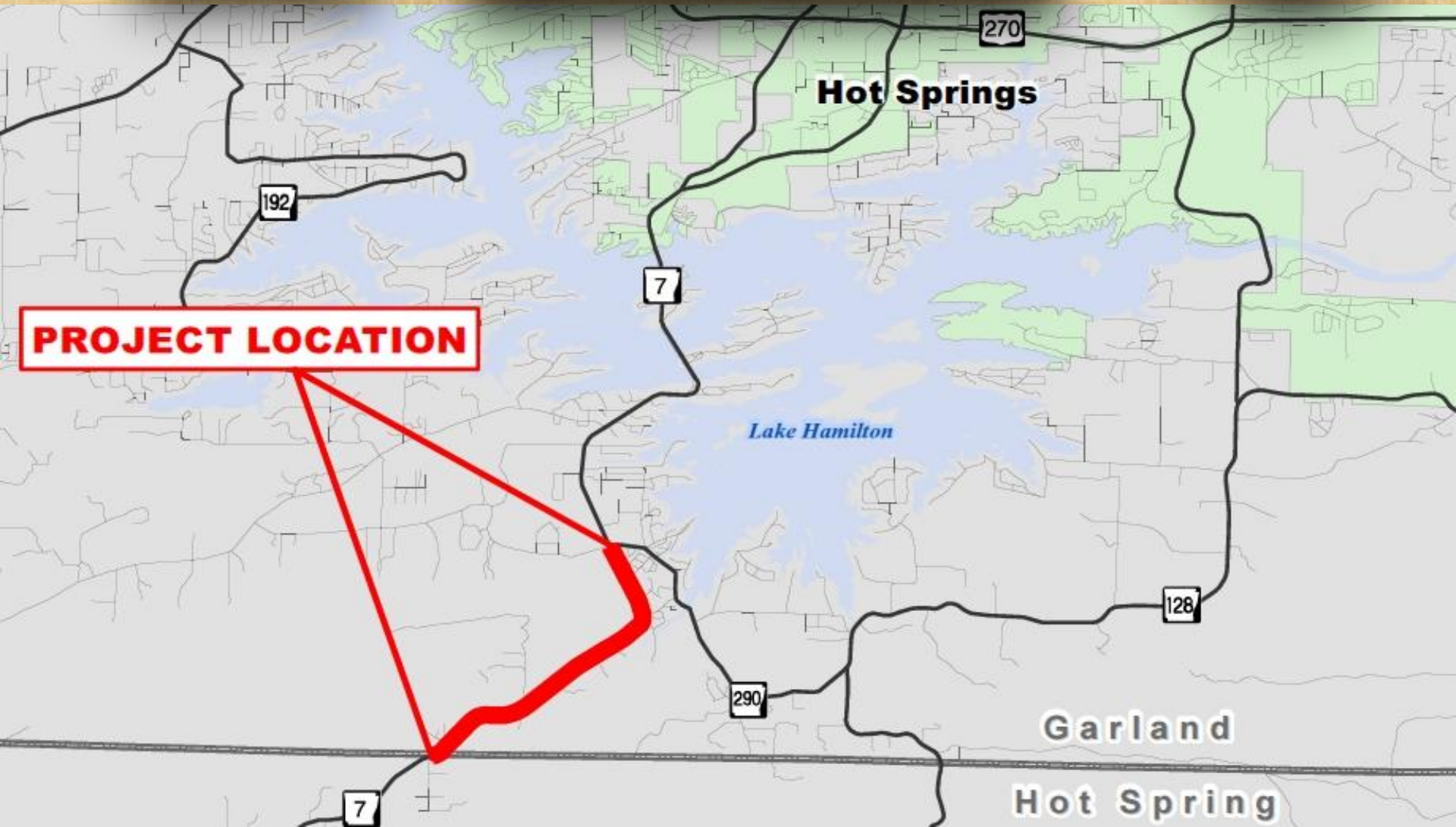
7

5 Lanes/curb/gutter  
Est. Award: 2015  
Cost: \$8 Million



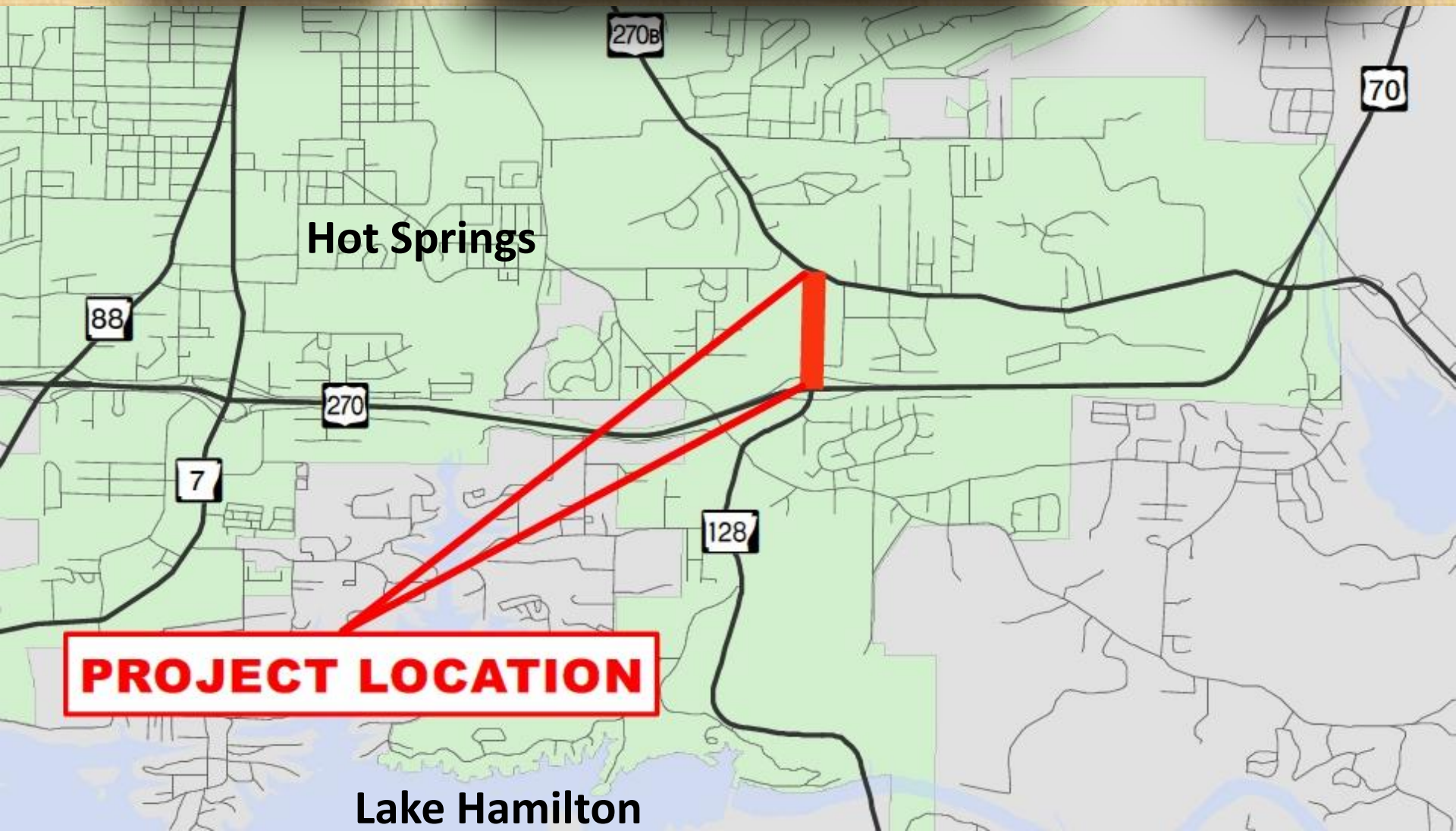


**5 Lanes/New Bridge**  
**Est. Award: 2016**  
**Cost: \$10 Million**





**5 Lanes/curb/gutter**  
**Est. Award: TBD**  
**Cost: \$2 Million**



**PROJECT LOCATION**

**Lake Hamilton**



**5 Lanes Curb/Gutter  
& Bike Lanes  
Hwy 7 South to  
Hwy 7 North**



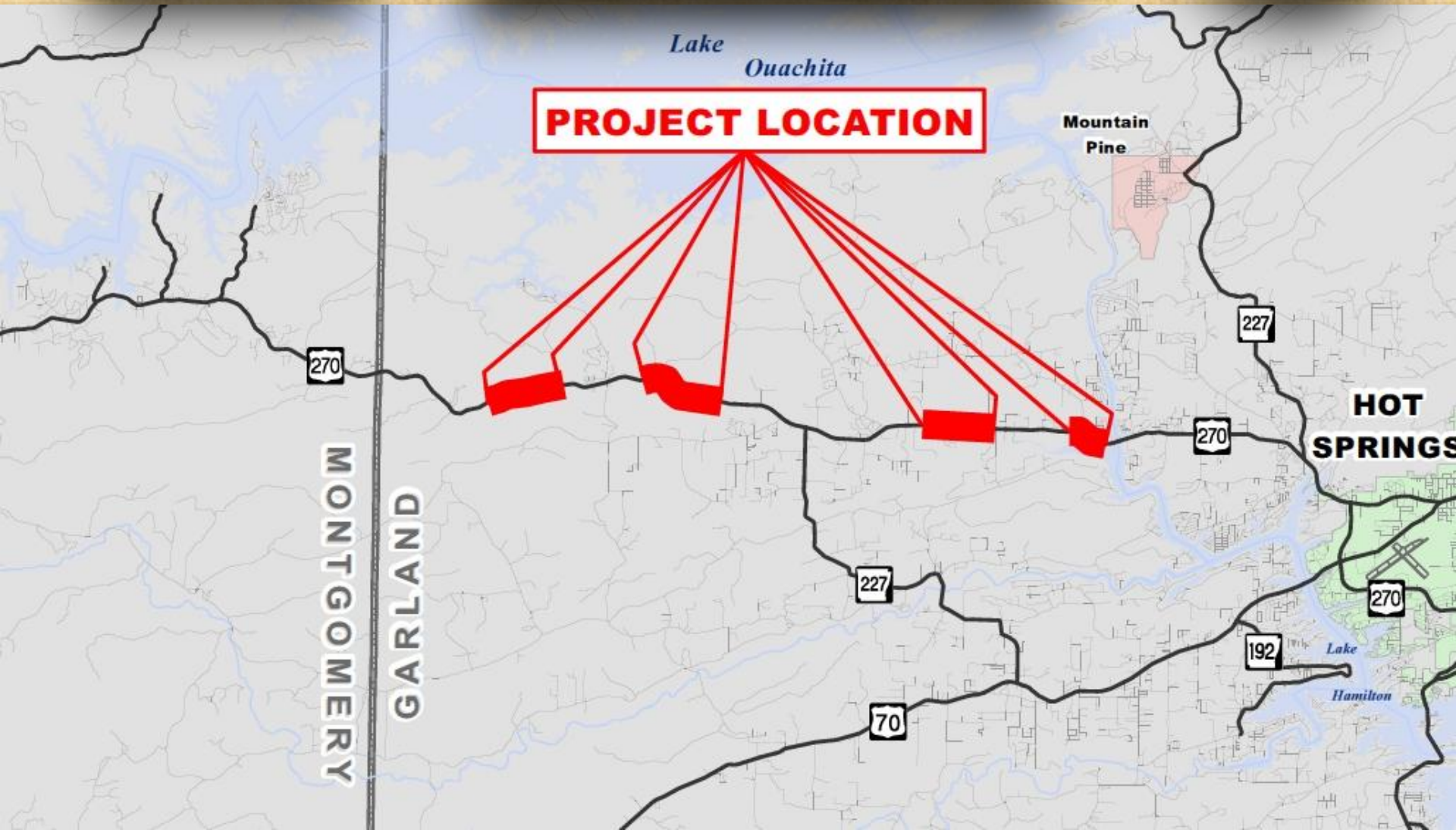


**View:  
Northbound  
Beginning of Project**





Add Passing Lanes  
Cost: \$9,731,551  
Comp: Late July

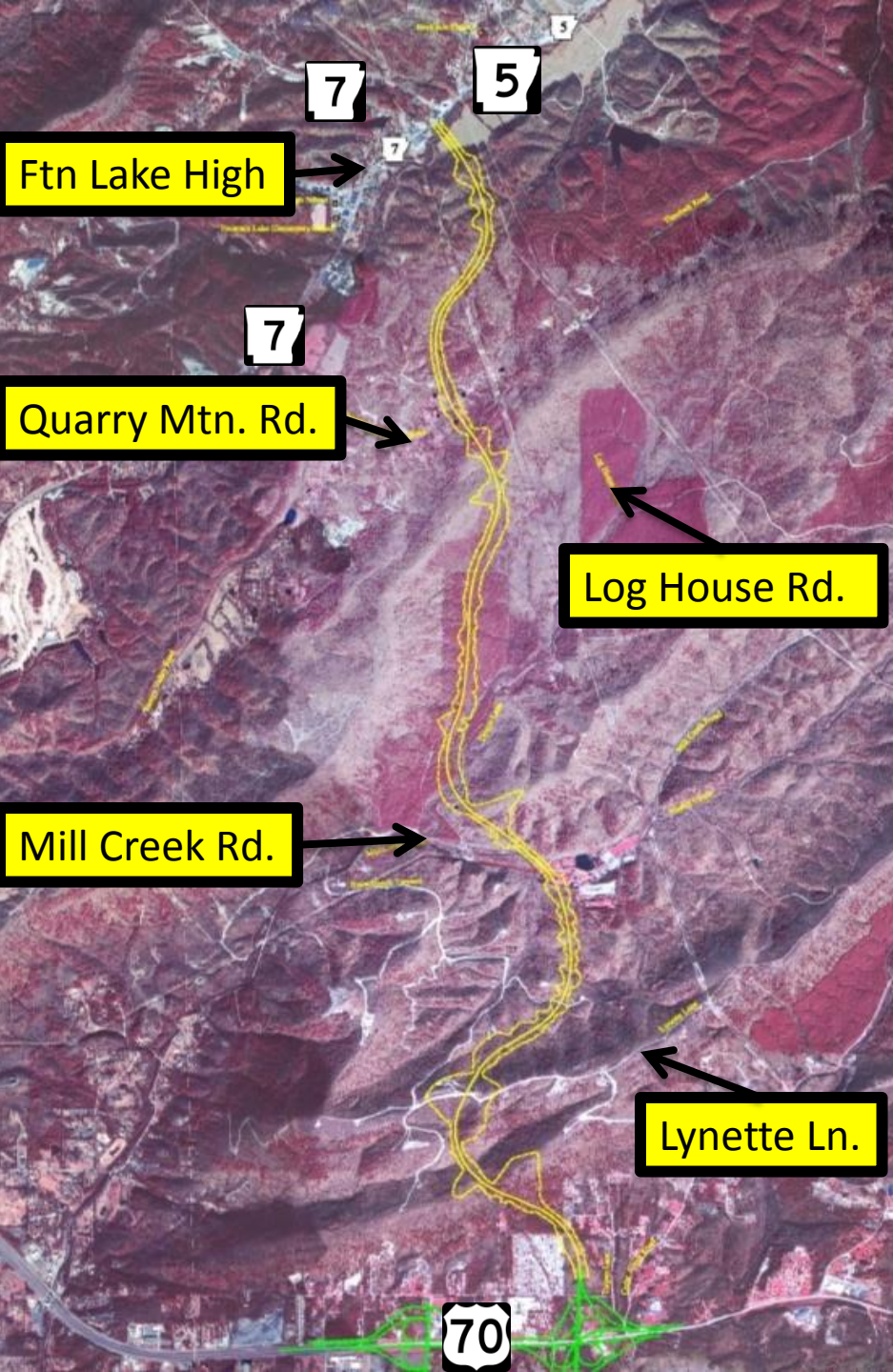






# New Passing Lanes East of Crystal Springs





# Hot Springs Bypass

Hwy 70 E to Hwy 7 N  
(ON HOLD)

Environmental  
Assessment Approved  
February 2005

Project on hold due to  
lack of funding

Next: Partnering  
Proposal

# National Survey: Americans Value Good Roads

78 %

Driving a motor vehicle is “Very” or “Extremely”  
important to conducting daily lives



# National Survey: Americans Value Good Roads

88 %

Transportation infrastructure is important to  
maintaining a strong economy



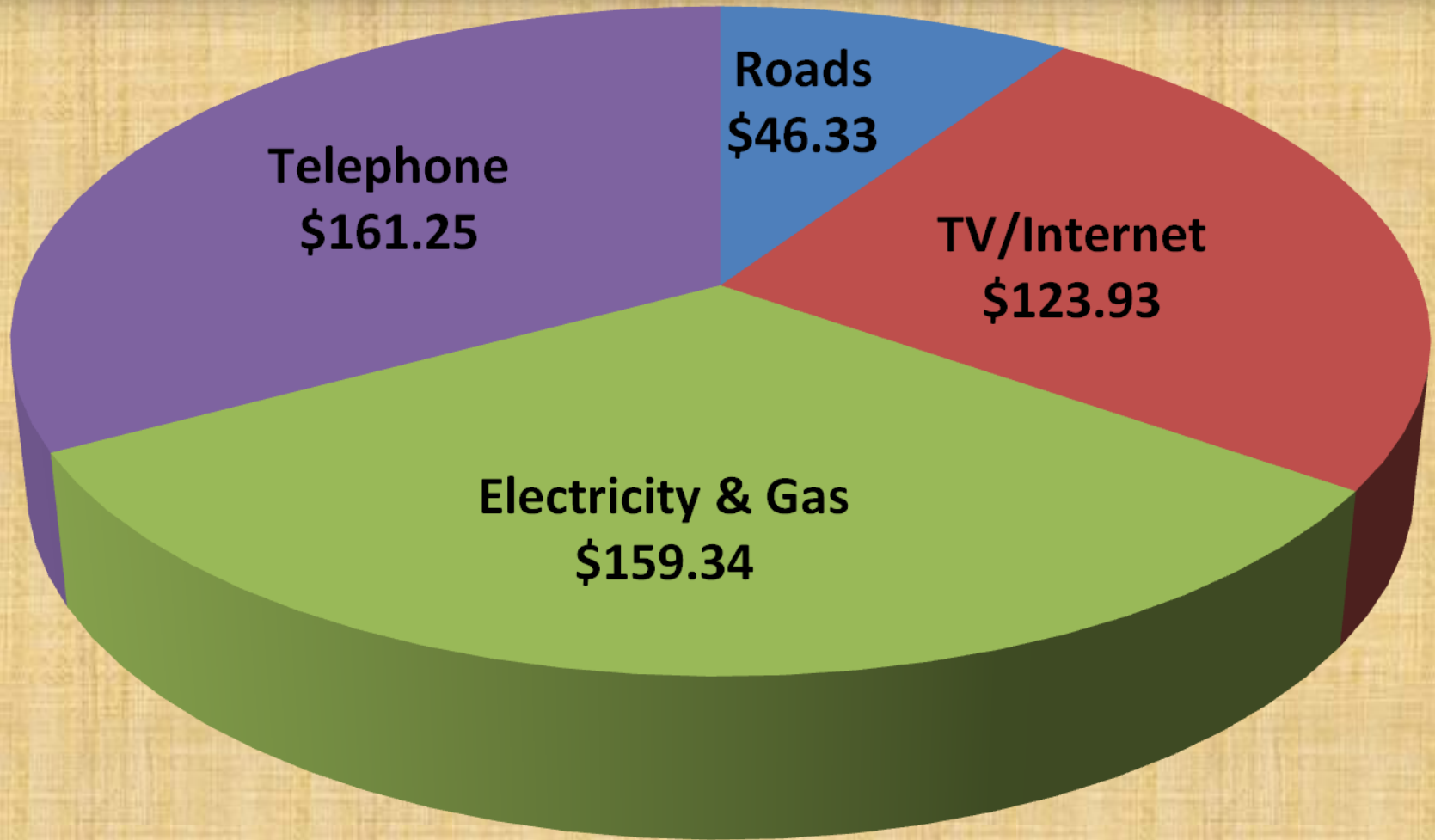
# National Survey: Americans Value Good Roads

83 %

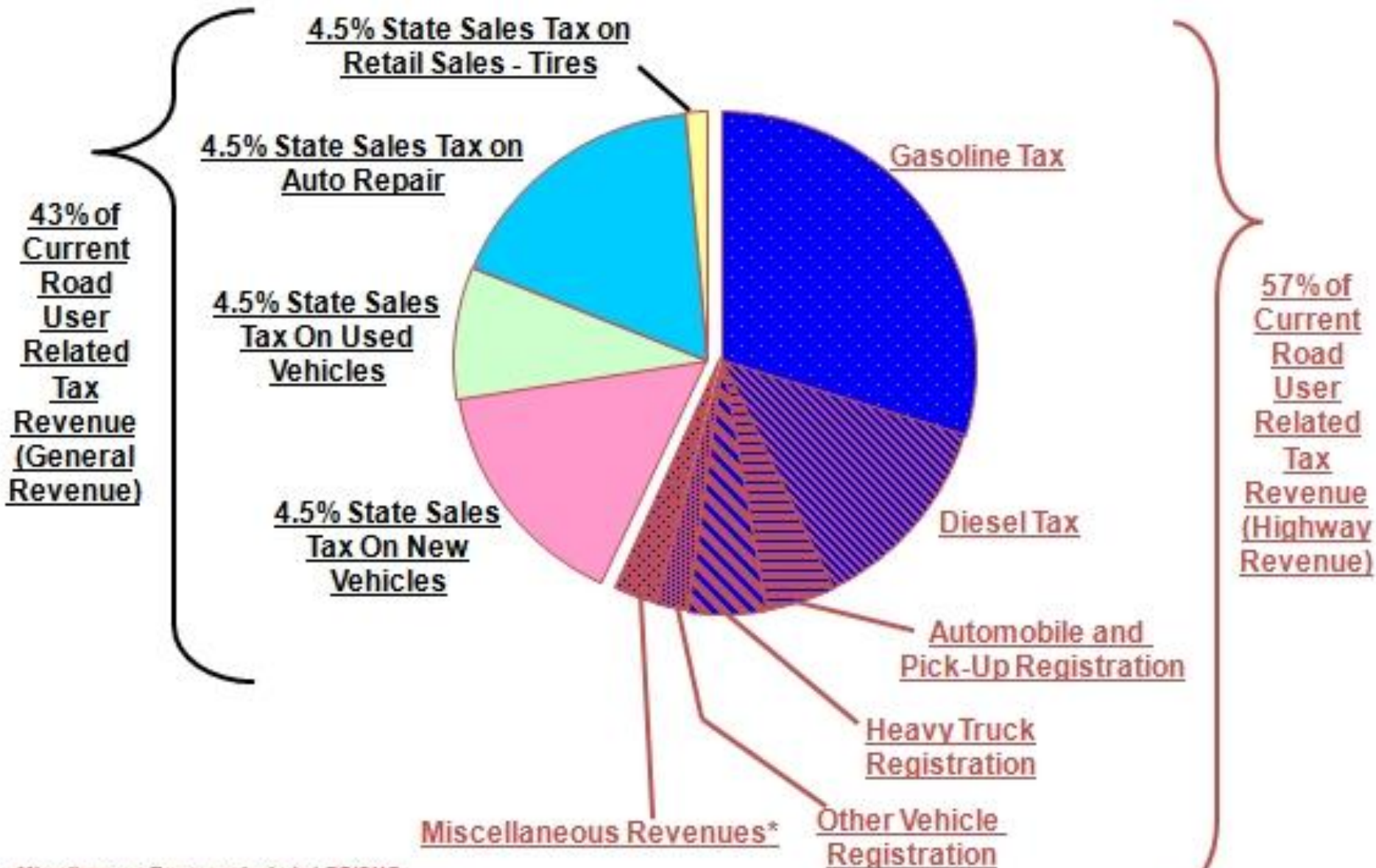
Transportation network is important to ensuring  
national defense and emergency response



# Average Monthly Household Expenditures

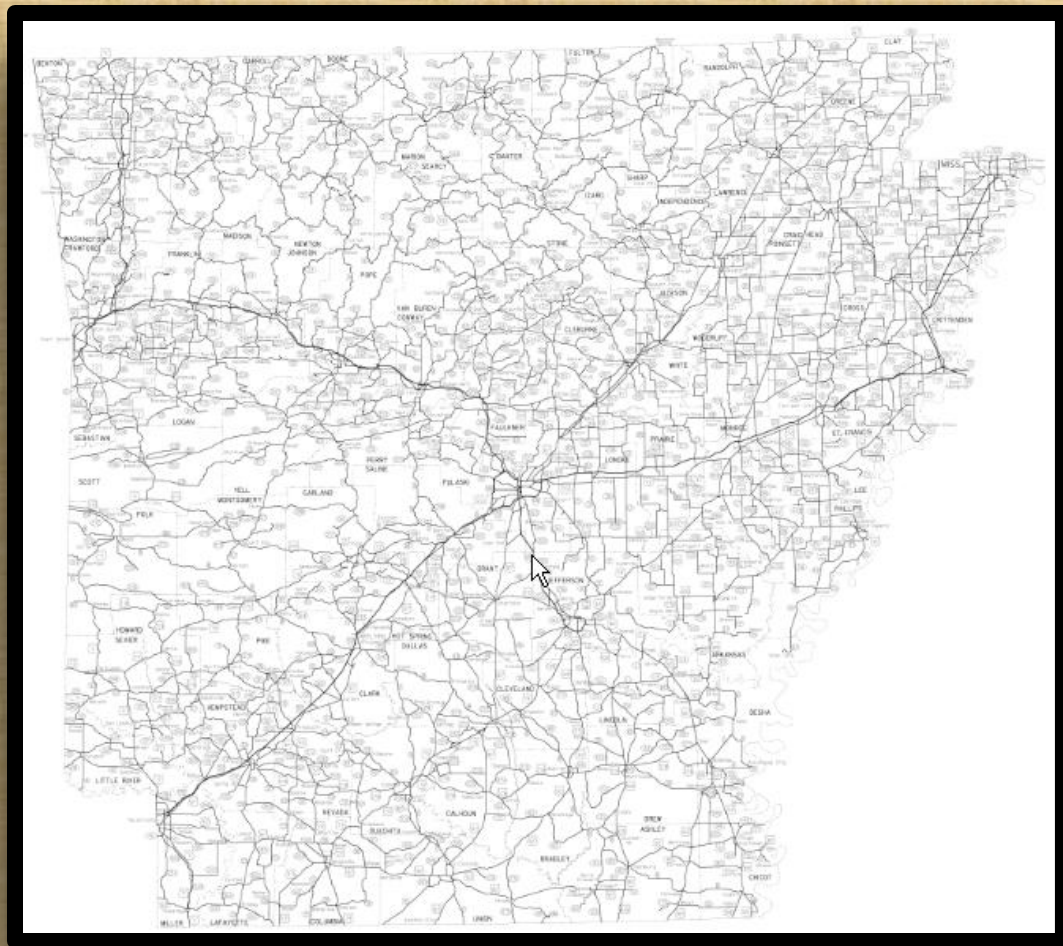


# Road User State Tax Revenue



\* Miscellaneous Revenues Include LPG/CNG, Oversize and Overweight Permit Fees, and Interest

# Needs vs. *Revenue*



**Arkansas Highway  
System**

**16,400 miles**



# Needs vs. *Revenue*



= 200 miles



= 450 miles

# Needs vs. *Revenue*



**Total = 650 miles**

**3.9%**



CONNECTING  
ARKANSAS  
PROGRAM

# CAP





“We choose to go to the Moon in this decade and do the other things, not because they are easy - but because they are hard! “

— President John F. Kennedy  
September 12, 1962





[ArkansasHighways.com](http://ArkansasHighways.com)

Litter Hotline 866-811-1222



**@AHTD**

