

# Arkansas State Highway and Transportation Department



**Garland County Tea Party**

October 16, 2013

# About AHTD







# The Facts:

➤ **12<sup>th</sup>** Largest System in USA

➤ **43<sup>rd</sup>** Highway Revenue Per Mile



# How We Compare

State	Mileage
<b>Arkansas</b>	<b>16,400</b>
Illinois	16,040
California	15,205
New York	14,969
Tennessee	13,881
Florida	12,084



# How We Compare

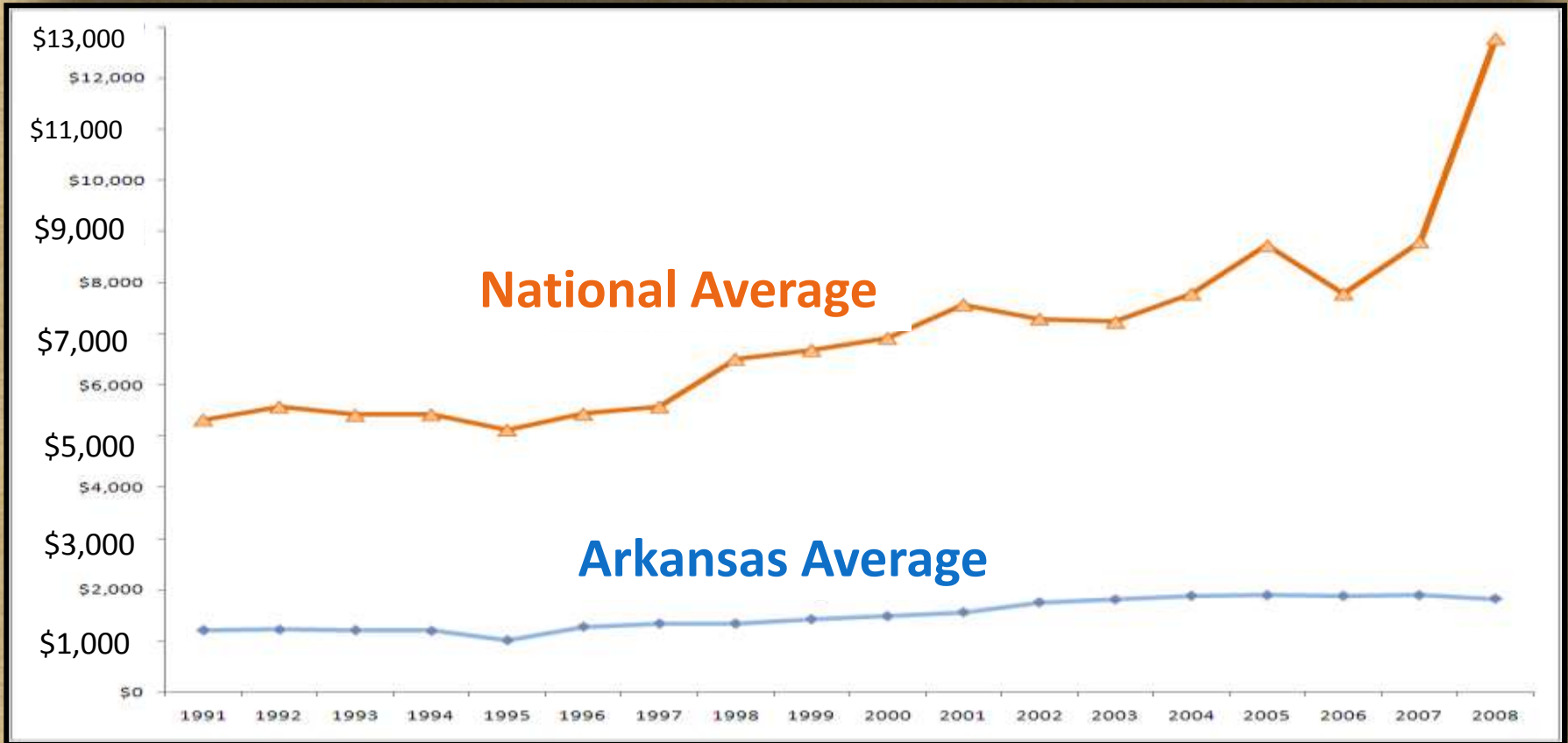
State	Mileage	Revenue Per Mile
<b>Arkansas</b>	<b>16,400</b>	<b>\$58,536</b>
Illinois	16,040	\$252,000
California	15,205	\$682,000
New York	14,969	\$237,000
Tennessee	13,881	\$108,000
Florida	12,084	\$694,532



# How We Compare

State	Mileage	Admin. Cost Per Mile
<b>Arkansas</b>	<b>16,400</b>	<b>\$1,821</b>
Illinois	16,040	\$8,830
California	15,205	\$109,417
New York	14,969	\$84,062
Tennessee	13,881	\$11,905
Florida	12,084	\$16,985

# AHTD Administrative Costs



**National Average \$12,772/mile**

**Arkansas \$1,821/mile**

**Surrounding States' Average  
\$5,342/mile**

**Arkansas' Rank = 49<sup>th</sup>**

# AHTD Employment Levels

Year	Employees
<b>2013</b>	<b>3,539</b>
2003	3,772
1993	4,052
1983	3,725
1973	3,583
1969	3,701





# Recent Voter Approved Programs

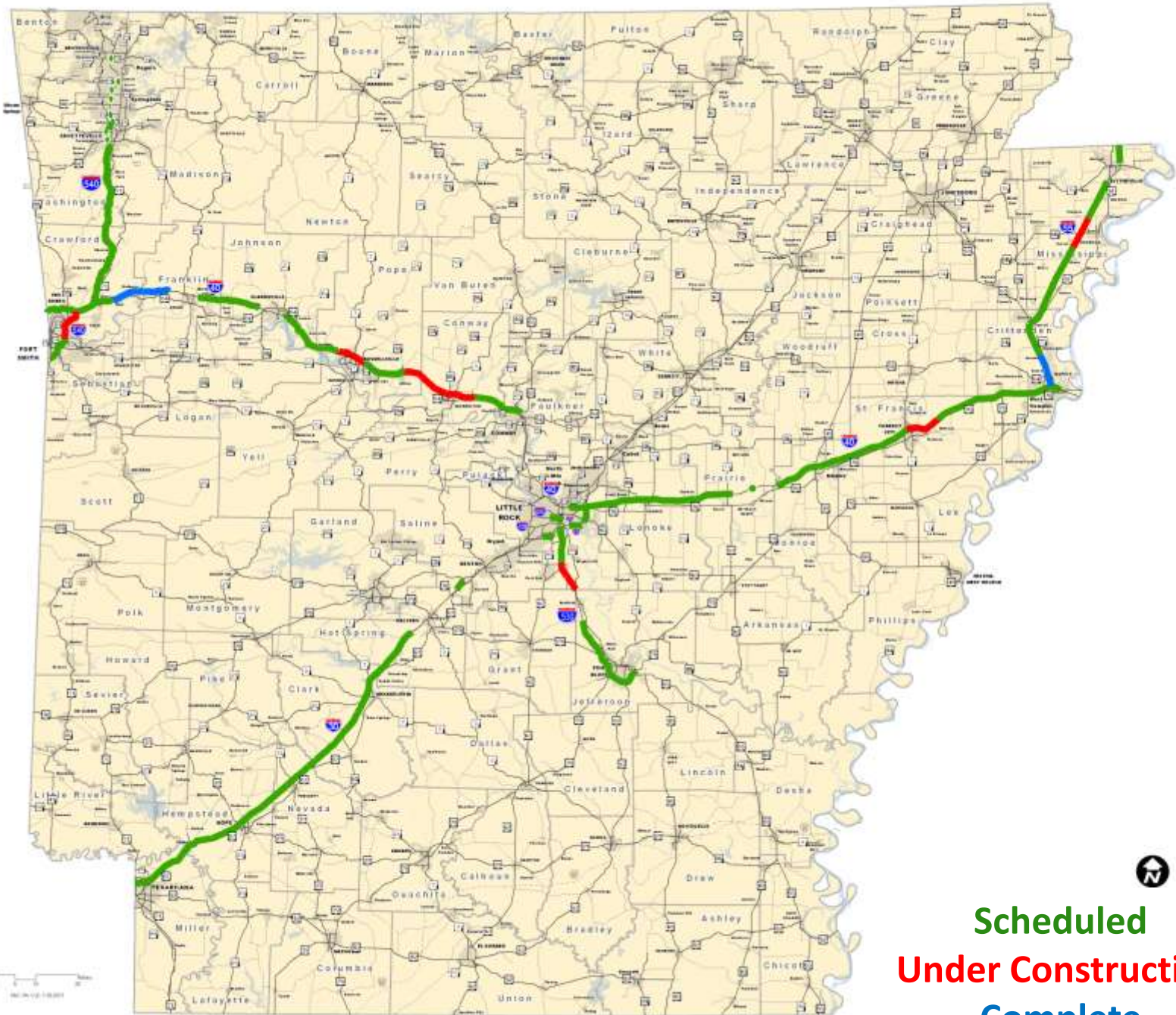
**November  
2011**



**November  
2012**



# Interstate Rehabilitation Program Job Status



**Scheduled**  
**Under Construction**  
**Complete**



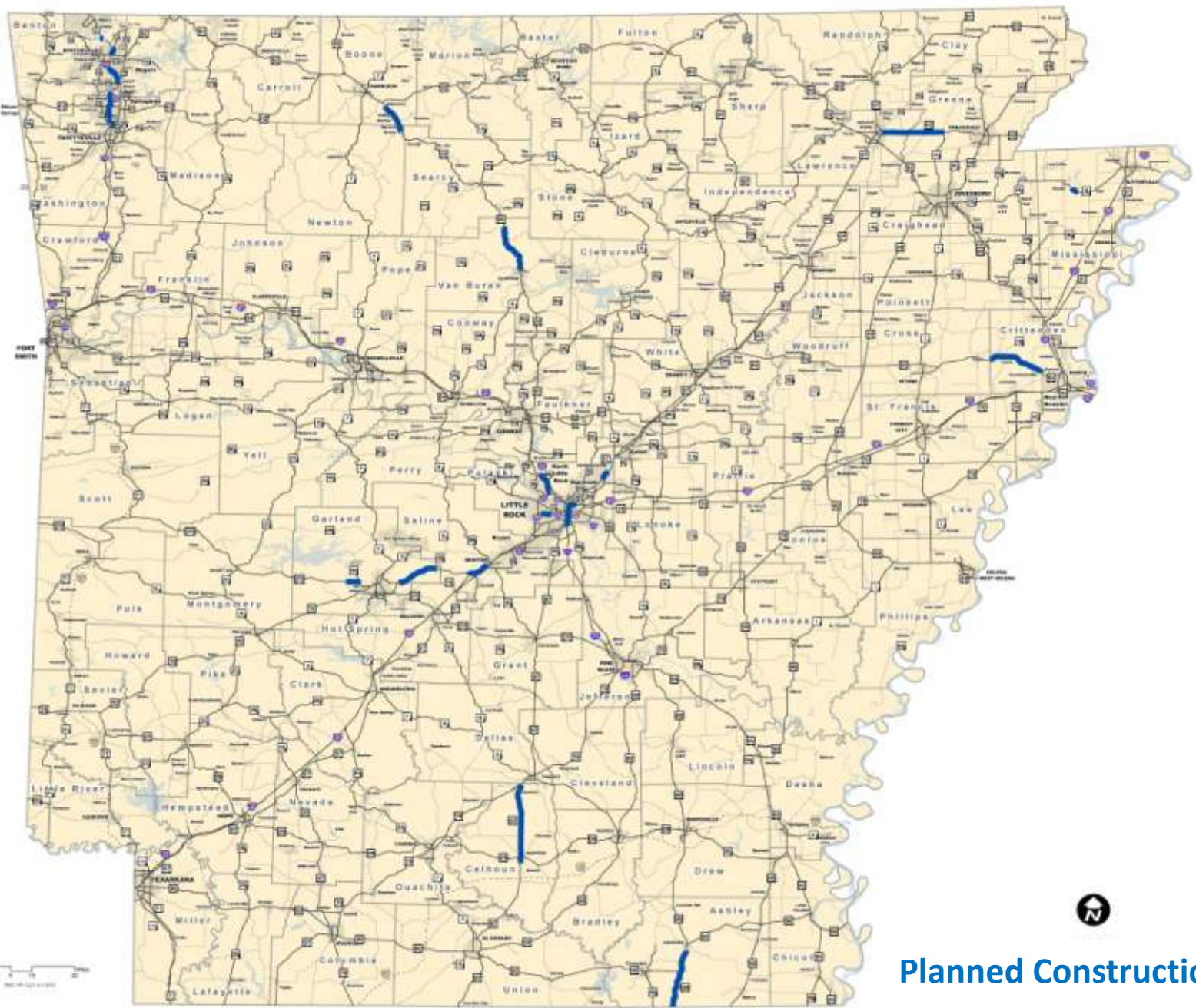




- ✓ Connects Arkansas
- ✓ Increases Capacity
- ✓ 10-Year Revenue Cap



# Connecting Arkansas Program



Planned Construction







# CAP Projects

## *Regional View*

4+ Lane Highways (Existing, Under Construction, Scheduled, and Proposed)

Planned



# CAP Projects

## Regional View

4+ Lane Highways (Existing, Under Construction, Scheduled, and Proposed)

Planned





***Turnback Funds***  
**for cities and counties.**





# Garland County

## *Turnback Funds*

County	Est. Standard	CAP Annual	CAP Cumulative
Garland	\$2,306,436	\$874,885	\$8,748,848







# Garland County

## *Turnback Funds*

County	Ten Year Cumulative
Garland	\$31,813,208







# Garland County

## *Turnback Funds*

City	Est. Standard	CAP Annual	CAP Cumulative
Fountain Lake	\$23,605	\$8,959	\$89,595
Hot Springs	\$1,651,526	\$626,861	\$6,268,606
Lonsdale	\$4,411	\$1,674	\$16,743
Mtn. Pine	\$36,134	\$13,715	\$137,153
<b>Total</b>	<b>\$1,715,676</b>	<b>\$651,209</b>	<b>\$6,512,097</b>





# Garland County

## *Turnback Funds*

City	Ten Year Cumulative
Fountain Lake	\$325,645
Hot Springs	\$22,783,866
Lonsdale	\$60,853
Mtn. Pine	\$498,493





# Garland County Construction

Projects	Miles	Cost
Completed	119	\$104,532,319
Under Construction	12	\$18,017,953
Planned	44	\$286,355,724
<b>Total</b>	<b>175</b>	<b>\$408,905,996</b>

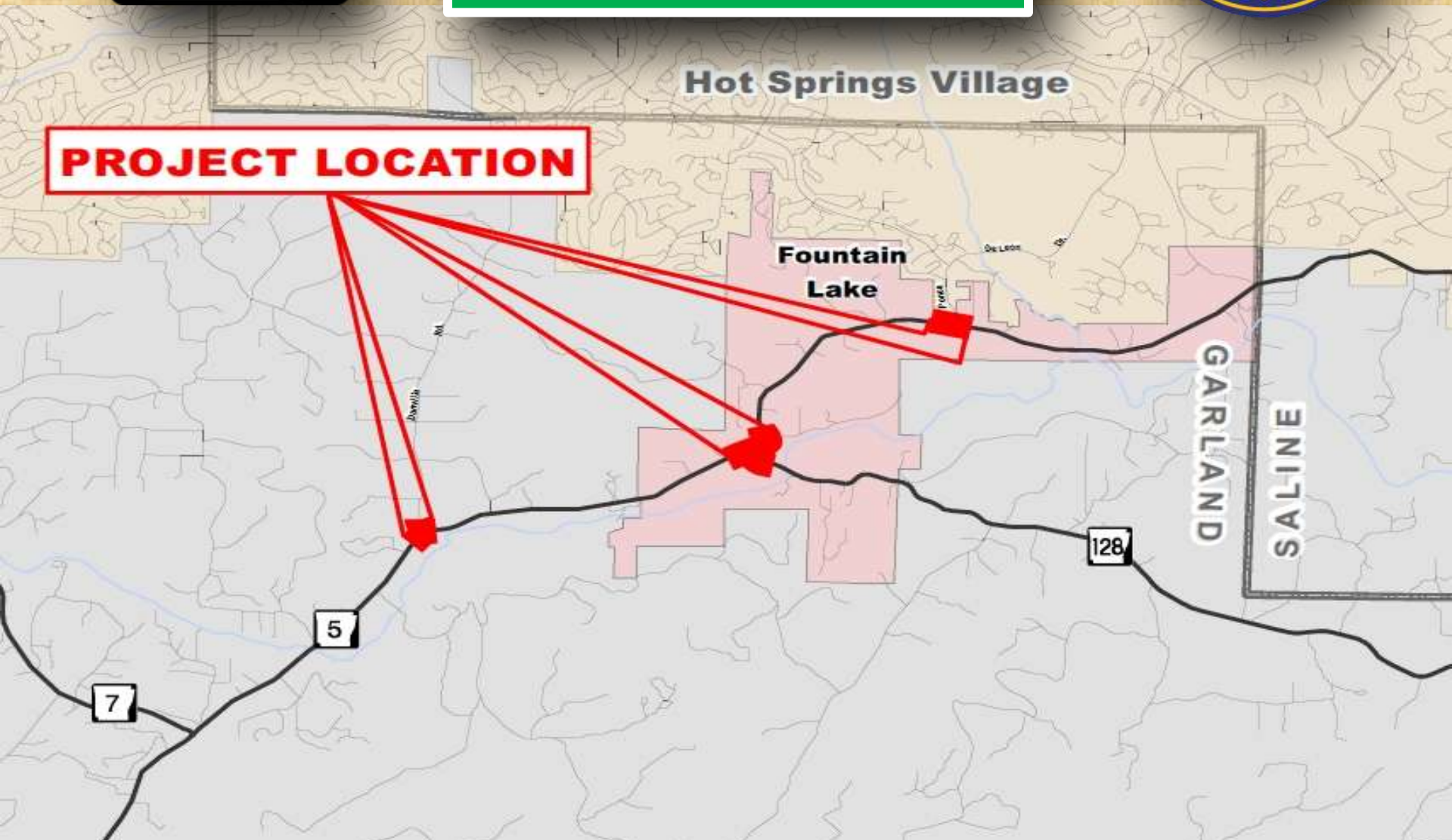




# Safety Improvement

Cost: \$3,490,333

Sub Comp: Aug 2013







# Safety Improvement Left Turn Lanes at Balboa Entrance





# Safety Improvement

## Realigning curves at Highway 128



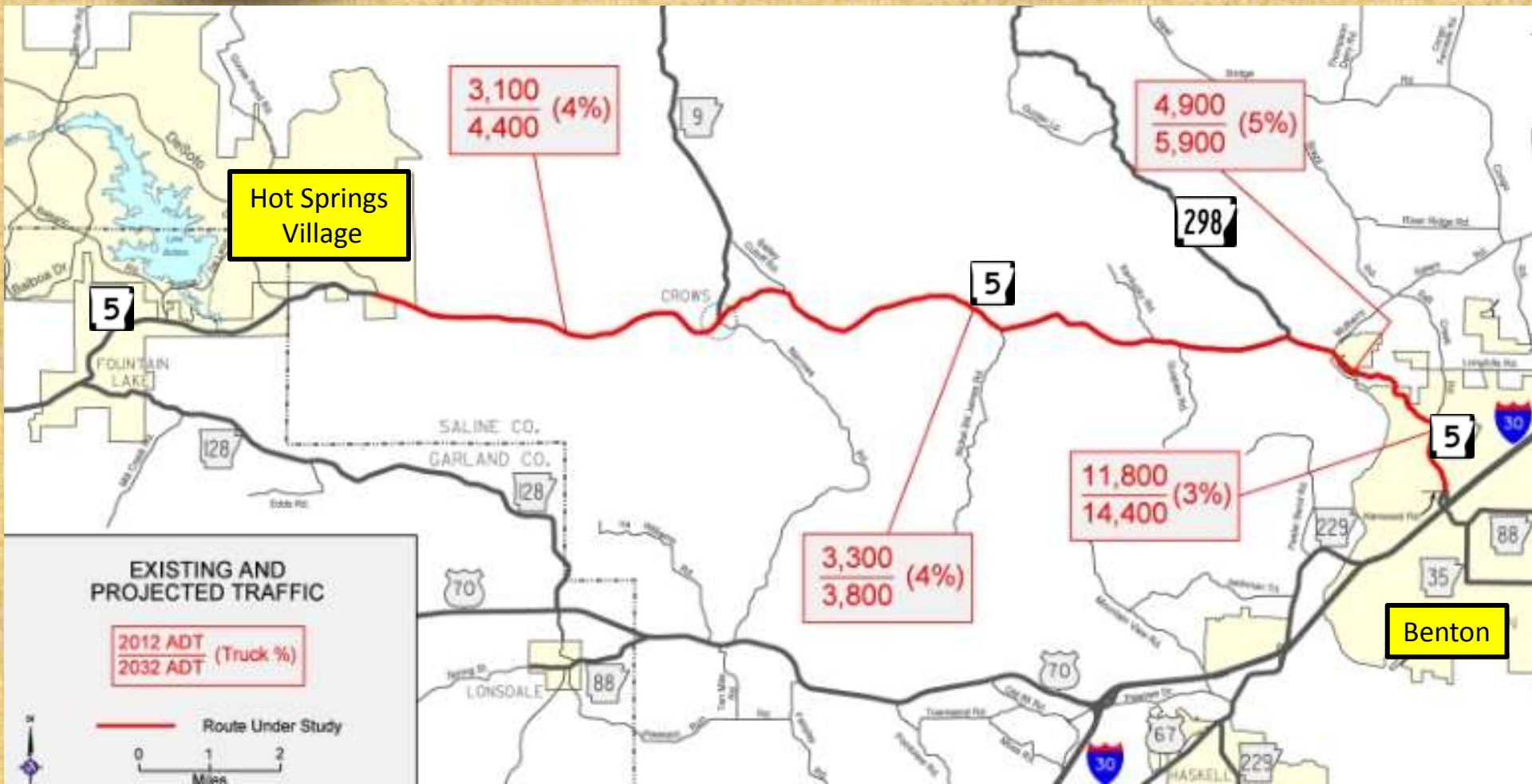




# Highway



# Study





*Highway*



*Study*



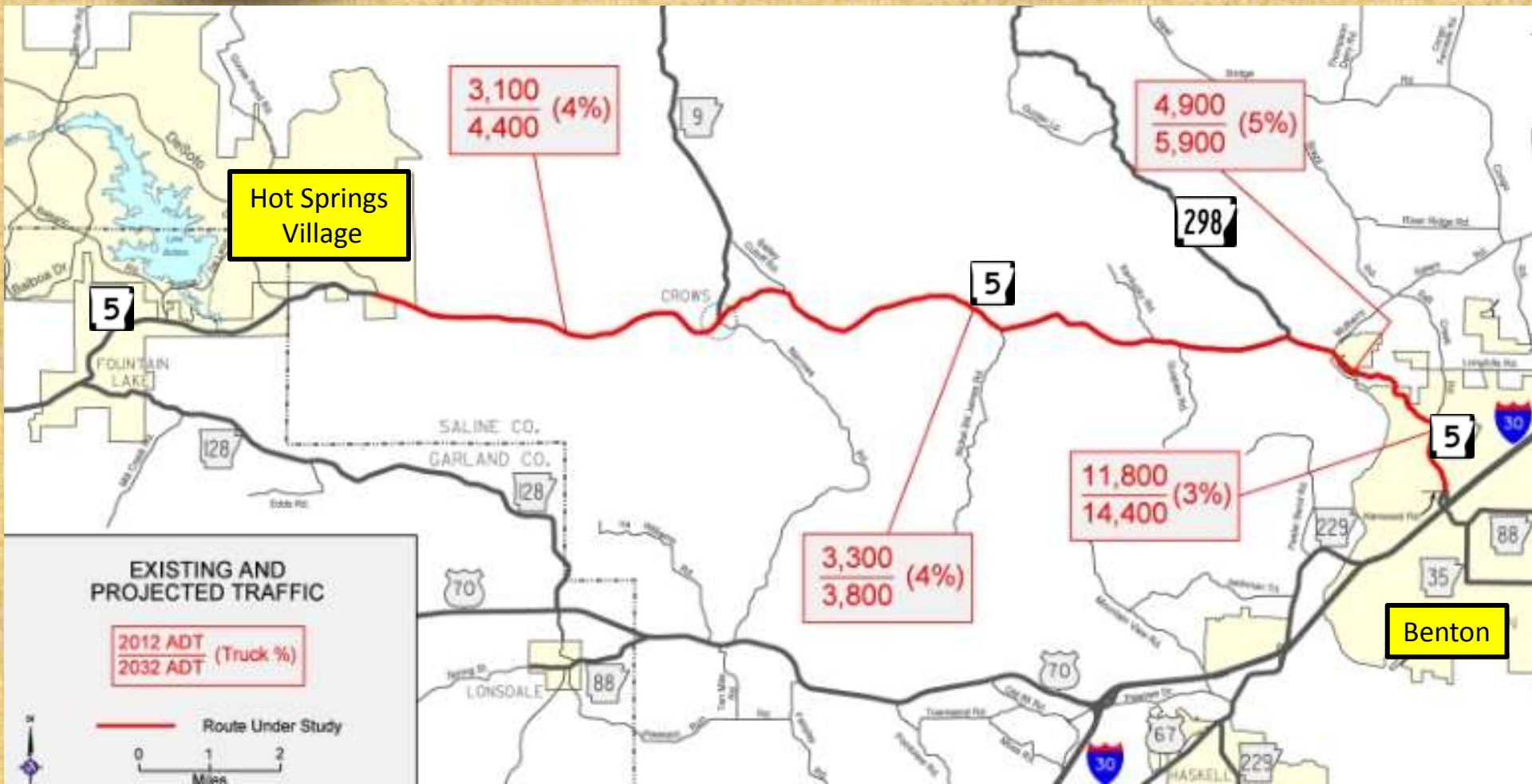




# Highway

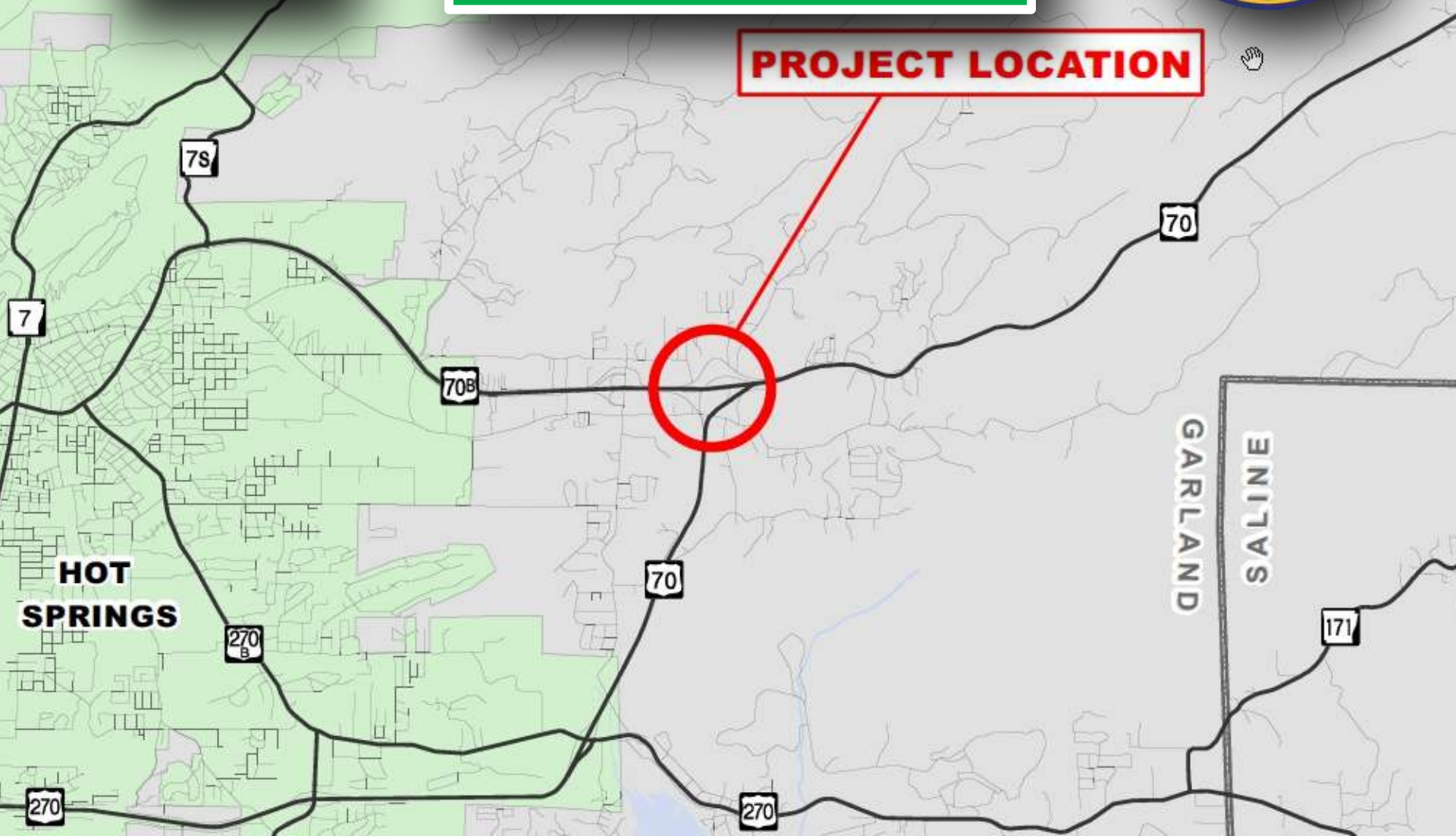


# Study





**Interchange Work**  
Cost: \$6,949,177  
Complete







**Interchange Work**  
Cost: \$6,949,177  
Complete

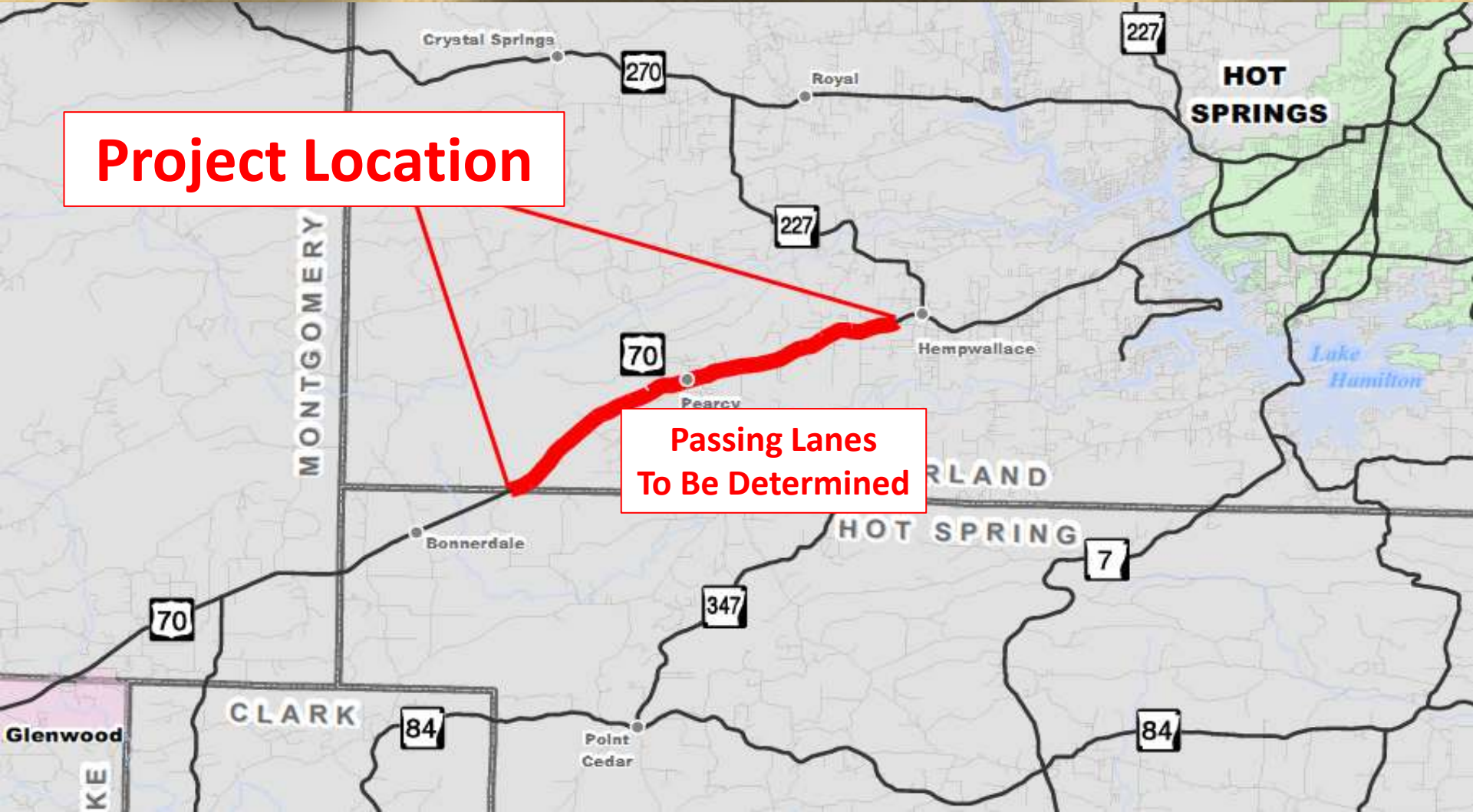




**New Passing Lanes**  
Cost: \$6.5 million  
Schedule: TBD



**Project Location**



**Passing Lanes  
To Be Determined**



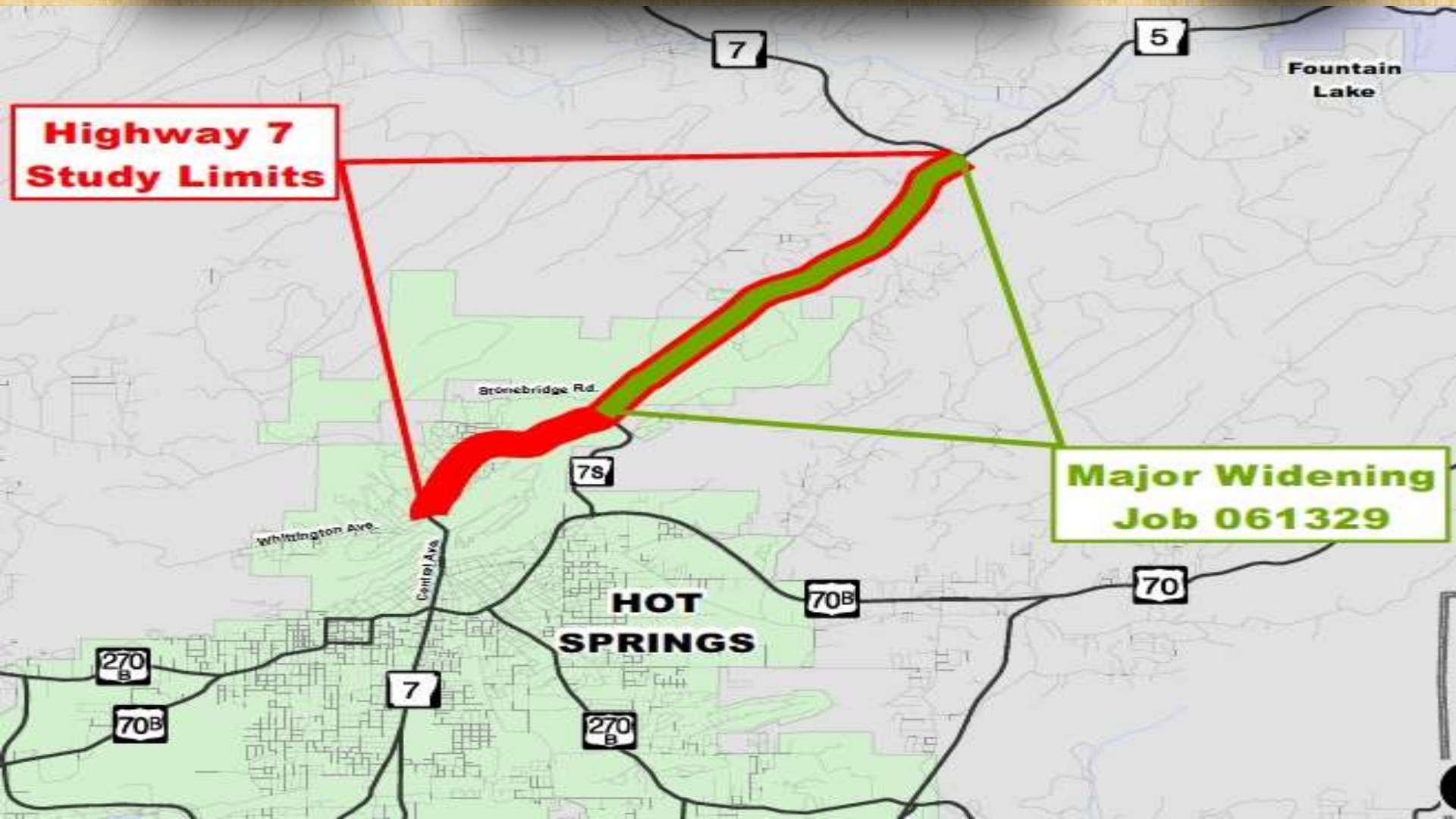


**Major Widening**  
Est. Award: 2016  
Cost: \$10 Million



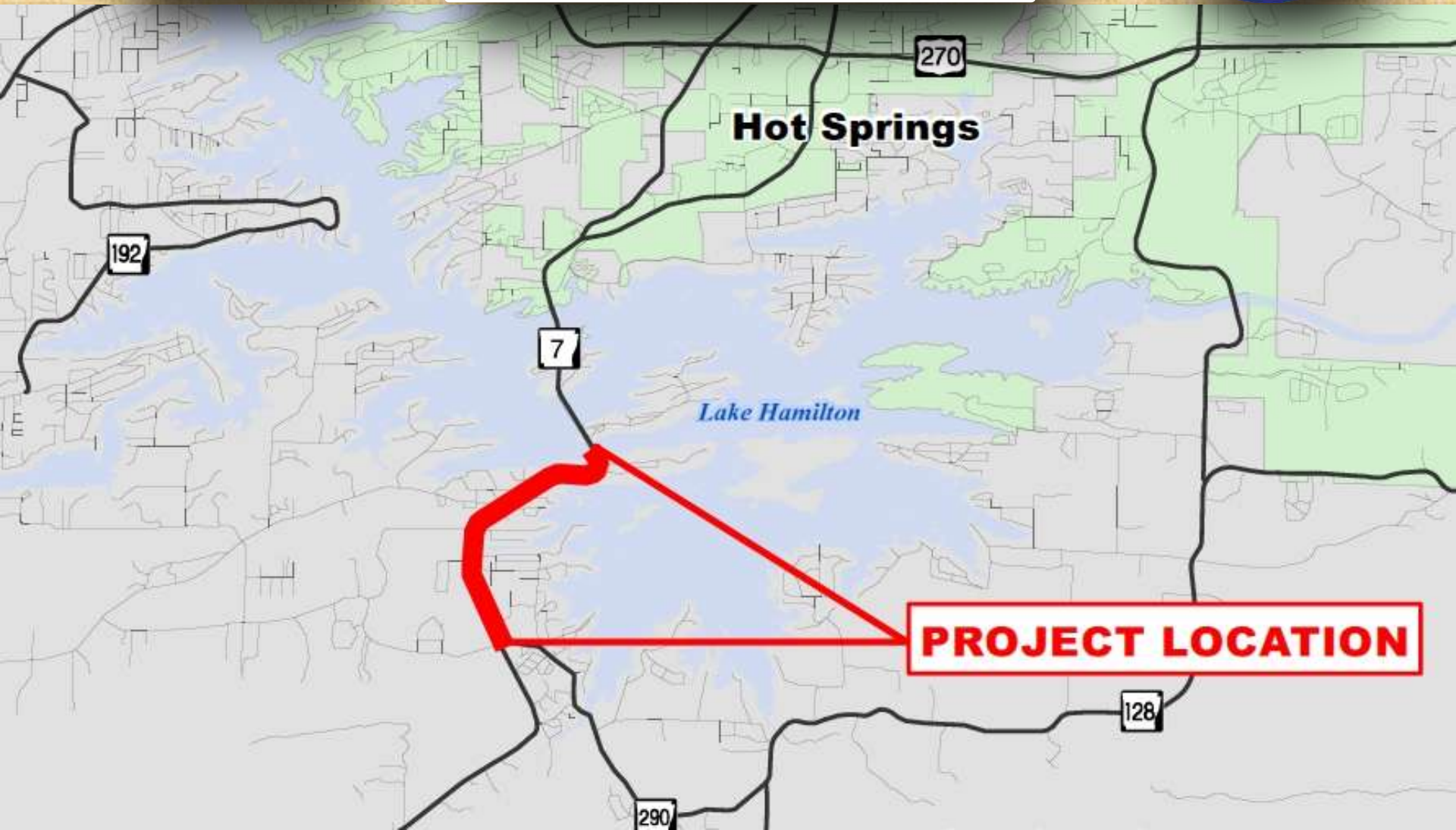
**Highway 7  
Study Limits**

**Major Widening  
Job 061329**





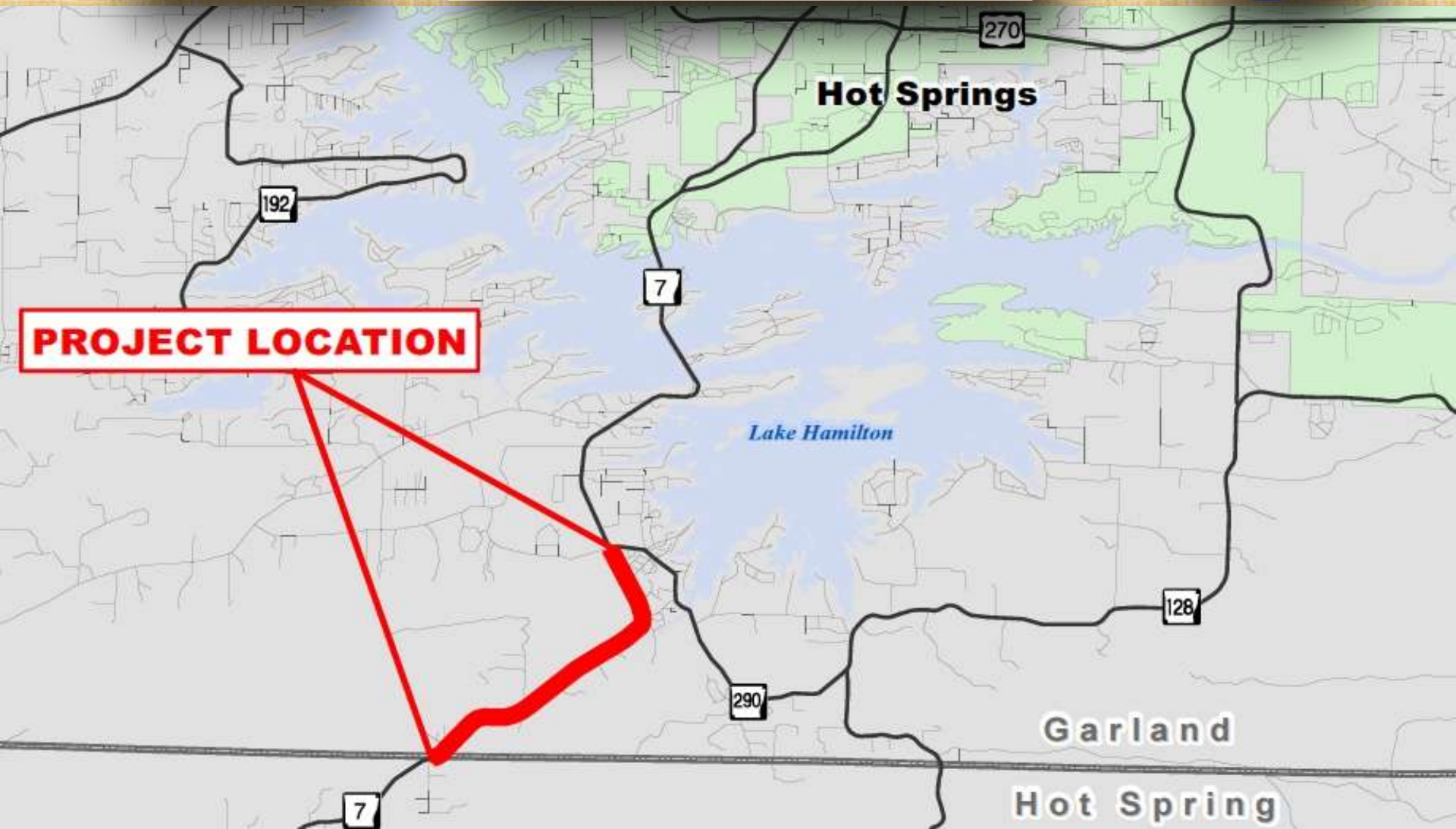
**5 Lanes/curb/gutter**  
**Est. Award: 2015**  
**Cost: \$8 Million**





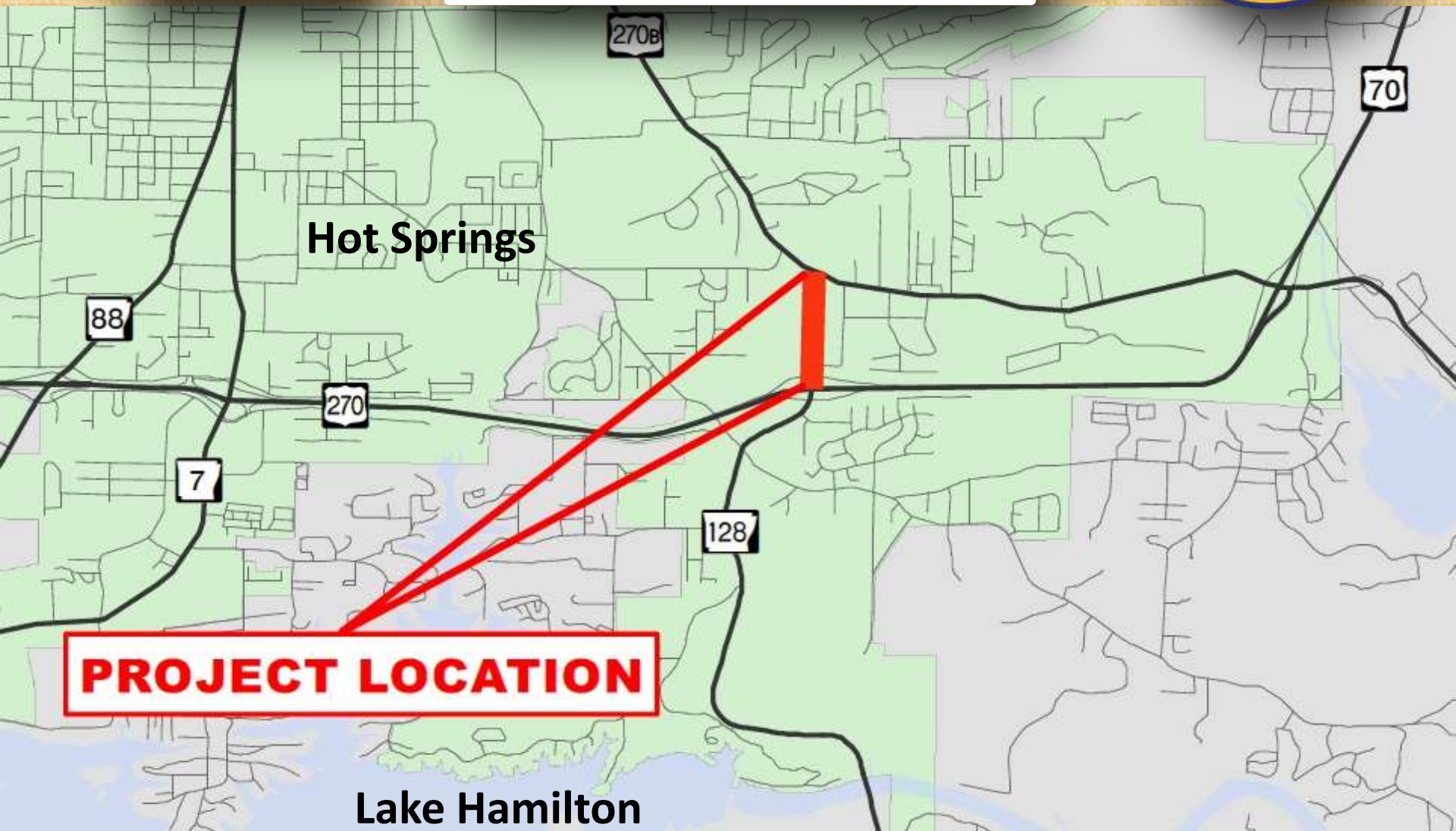


**5 Lanes/New Bridge**  
Est. Award: 2016  
Cost: \$10 Million





**5 Lanes/curb/gutter**  
Est. Award: TBD  
Cost: \$2 Million



**PROJECT LOCATION**

Lake Hamilton





**5 Lanes Curb/Gutter  
& Bike Lanes  
Hwy 7 South to  
Hwy 7 North**





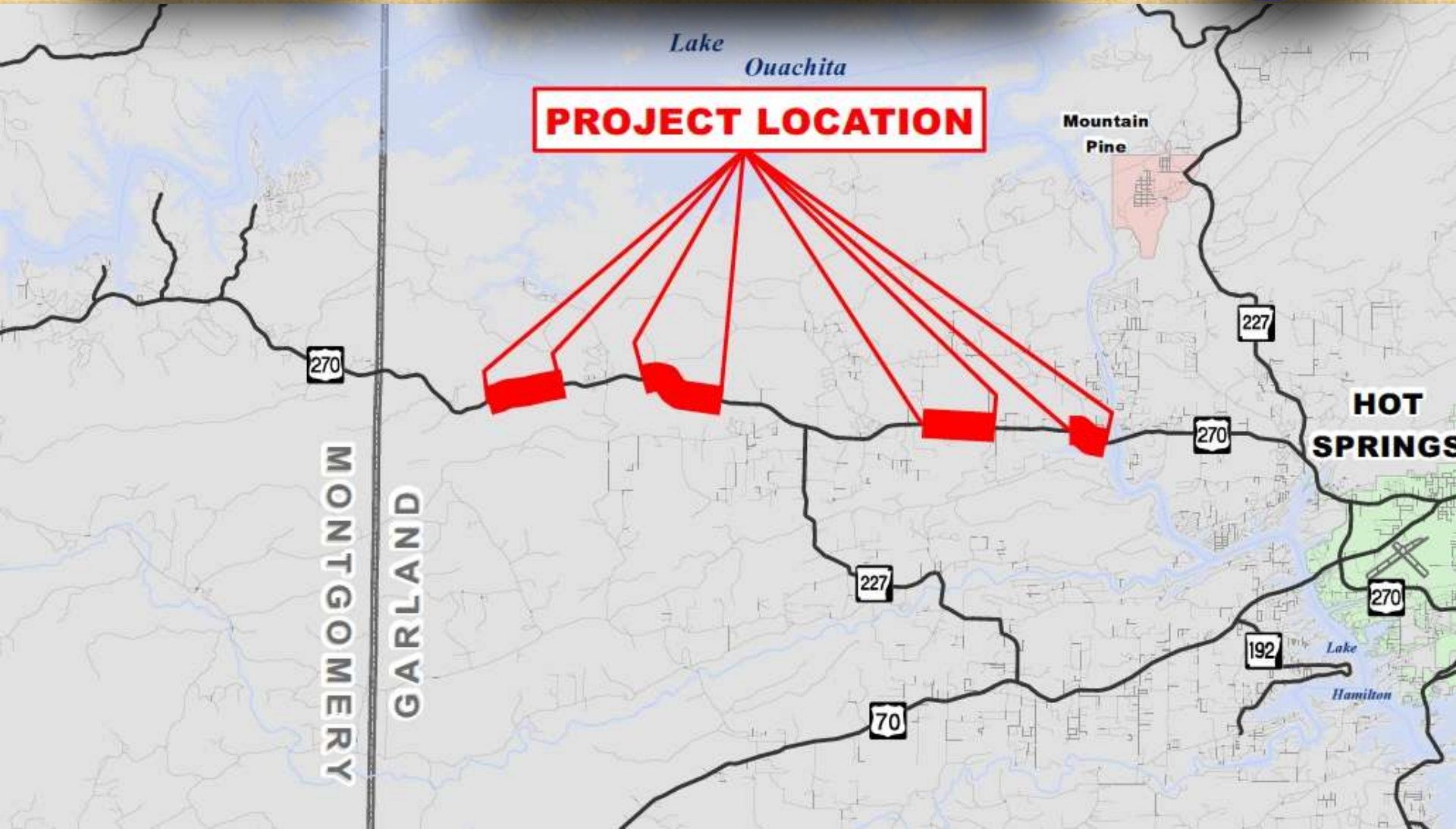
**View:**  
Northbound  
Beginning of Project







**Add Passing Lanes**  
Cost: \$9,731,551  
Complete





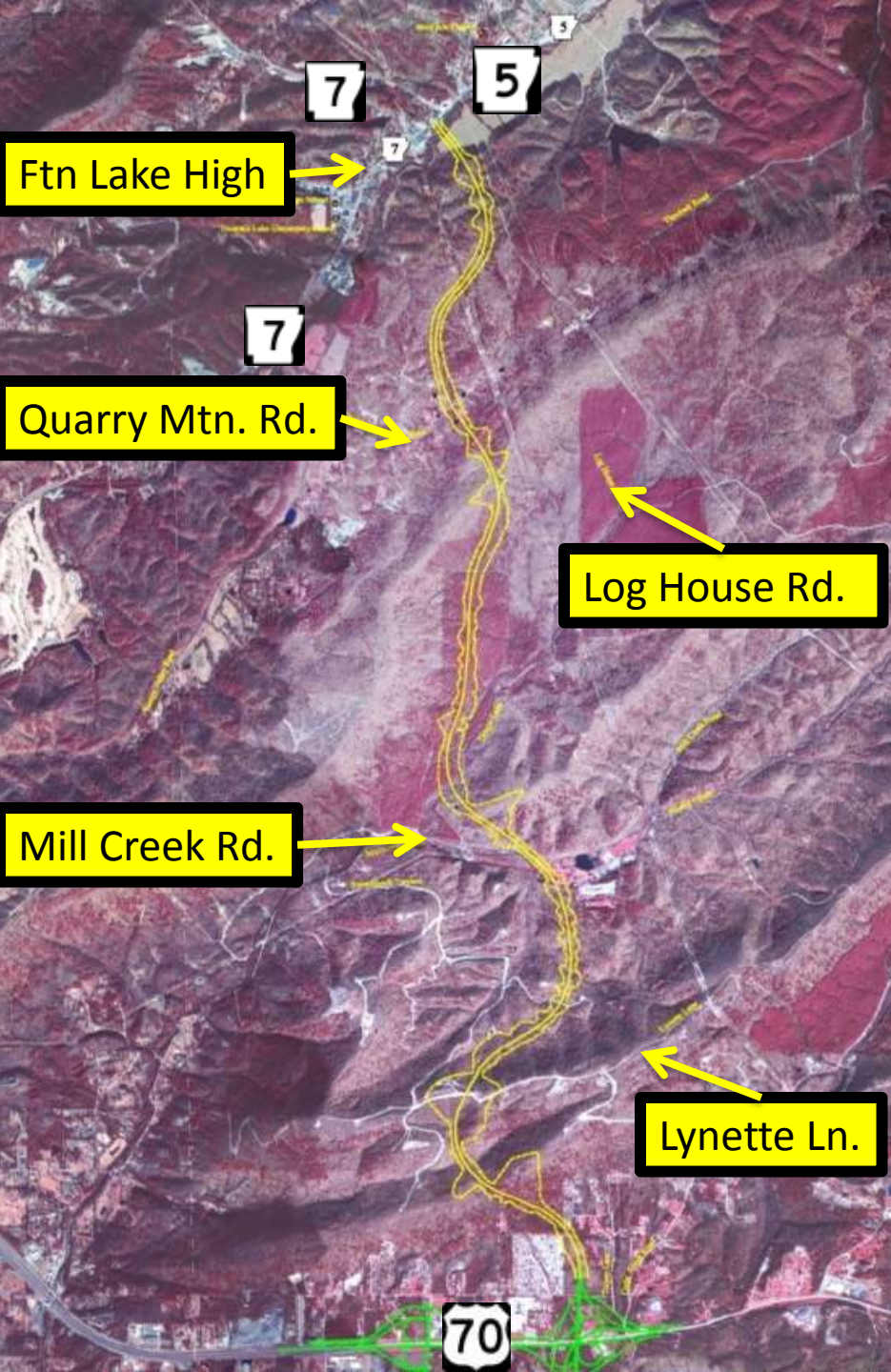
# New Passing Lanes East of Crystal Springs





# Hot Springs Bypass

Hwy 70 E to Hwy 7 N  
(ON HOLD)



**Environmental  
Assessment Approved  
February 2005**

**Project on hold due to  
lack of funding**

**Next: Partnering  
Proposal**

***“It was the best of times,  
it was the worst of times, . . .”***

*-A Tale of Two Cities*

Charles Dickens







# The Facts:

**\$23 billion dollars in needs  
over 10 years**

**Only had \$4 billion to  
address those needs**





# The Facts:

**CAP added \$1.8 billion**









# The Facts:

**Totaling nearly \$6 billion  
toward  
\$23 billion in needs**



# Needs vs. *Revenue*

 CONNECTING  
ARKANSAS  
PROGRAM  
**CAP** = 200 miles

 INTERSTATE  
REHABILITATION  
PROGRAM  
**IRP** = 450 miles



# Needs vs. *Revenue*



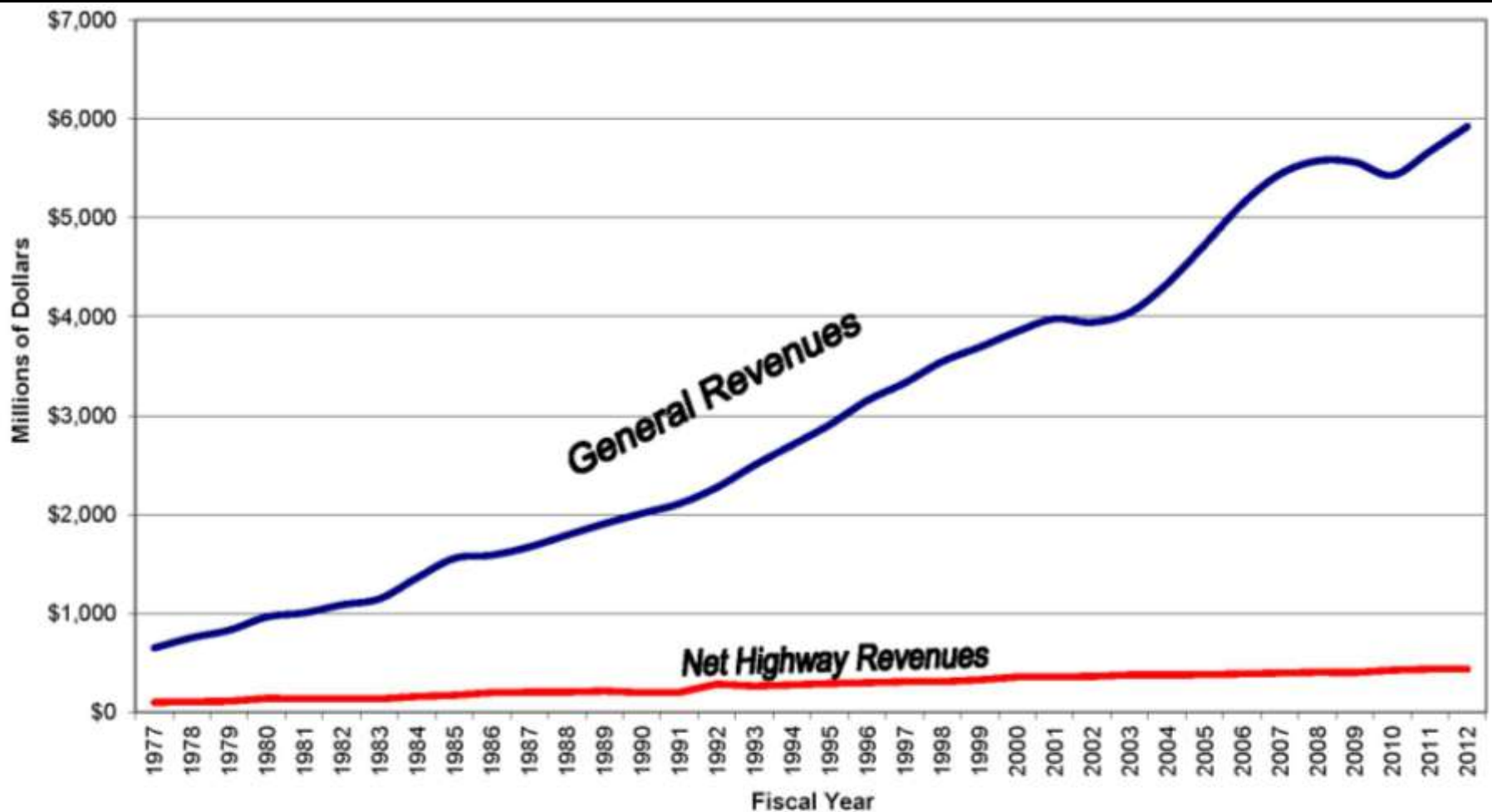
+



**Total = 650 miles**

**3.9%**

# State General Revenues vs. AHTD Net Highway Revenues



— ARKANSAS STATE GENERAL REVENUES

— AHTD NET HIGHWAY REVENUES

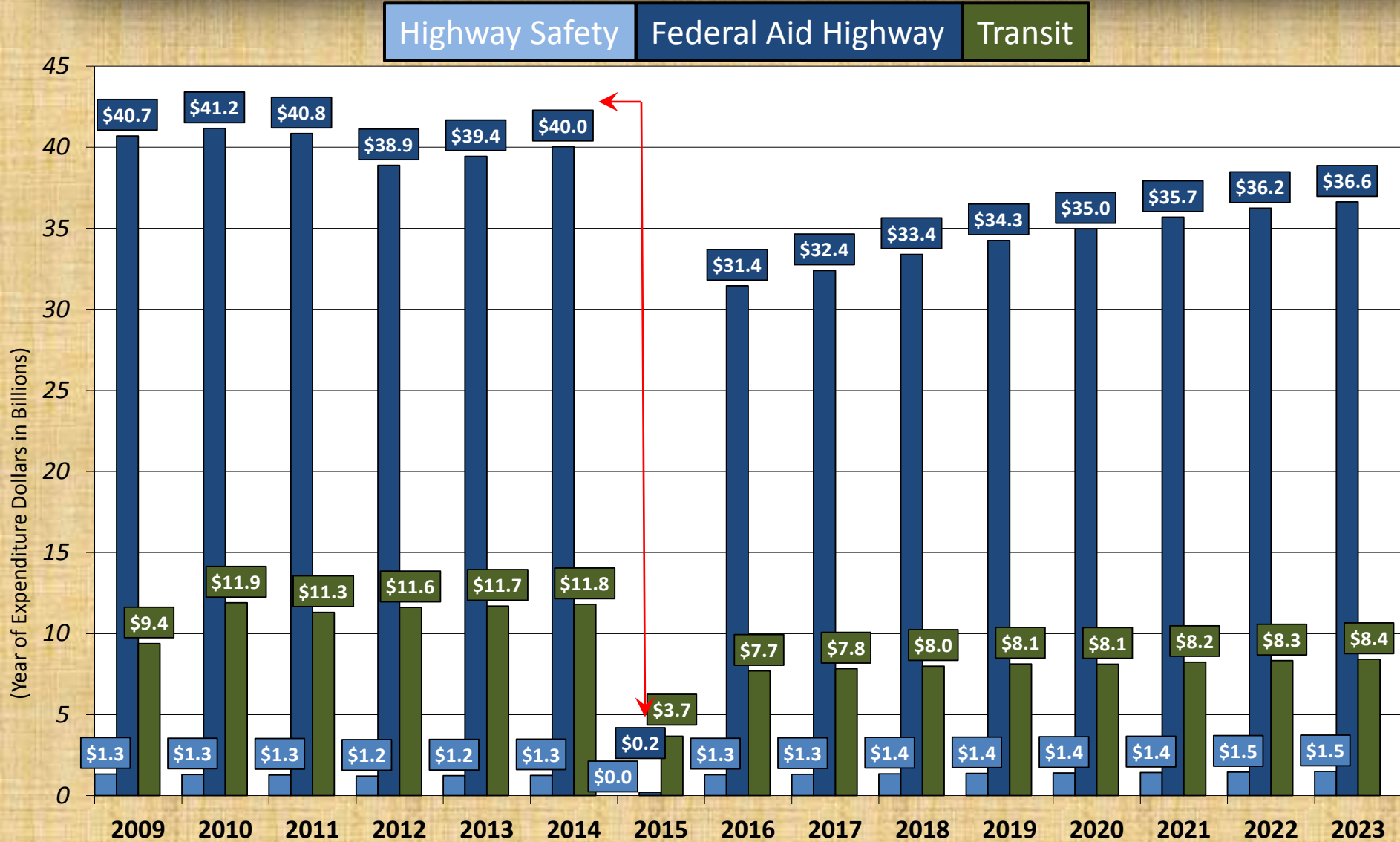
Excludes County & City aid funds

Prepared by: Planning and Research 9/27/2012



# HIGHWAY TRUST FUND

ESTIMATED FEDERAL HIGHWAY AND TRANSIT PROGRAM FUNDING LEVELS  
WITH NO NET NEW REVENUES





We're being asked to  
do more with less...





We can only do less  
with *less*.

# Needs vs. *Revenue*

**An additional \$200 million annually is needed over the next 10 years**

for highway congestion, pavement and bridge conditions, maintenance, administration and operations to remain at current levels.



# National Survey: American Manufacturers

70 %

American infrastructure is in fair or poor shape  
and needs a great deal or quite a bit of  
improvement



# National Survey: American Manufacturers

70 %

American roadways are getting worse





# National Survey: American Manufacturers

65 %

Do not believe that infrastructure is positioned to respond to the competitive demands of a growing economy over the next 10 to 15 years



# National Survey: Americans Value Good Roads

78 %

Driving a motor vehicle is “Very” or “Extremely”  
important to conducting daily lives





# National Survey: Americans Value Good Roads

88 %

Transportation infrastructure is important to  
maintaining a strong economy



# National Survey: Americans Value Good Roads

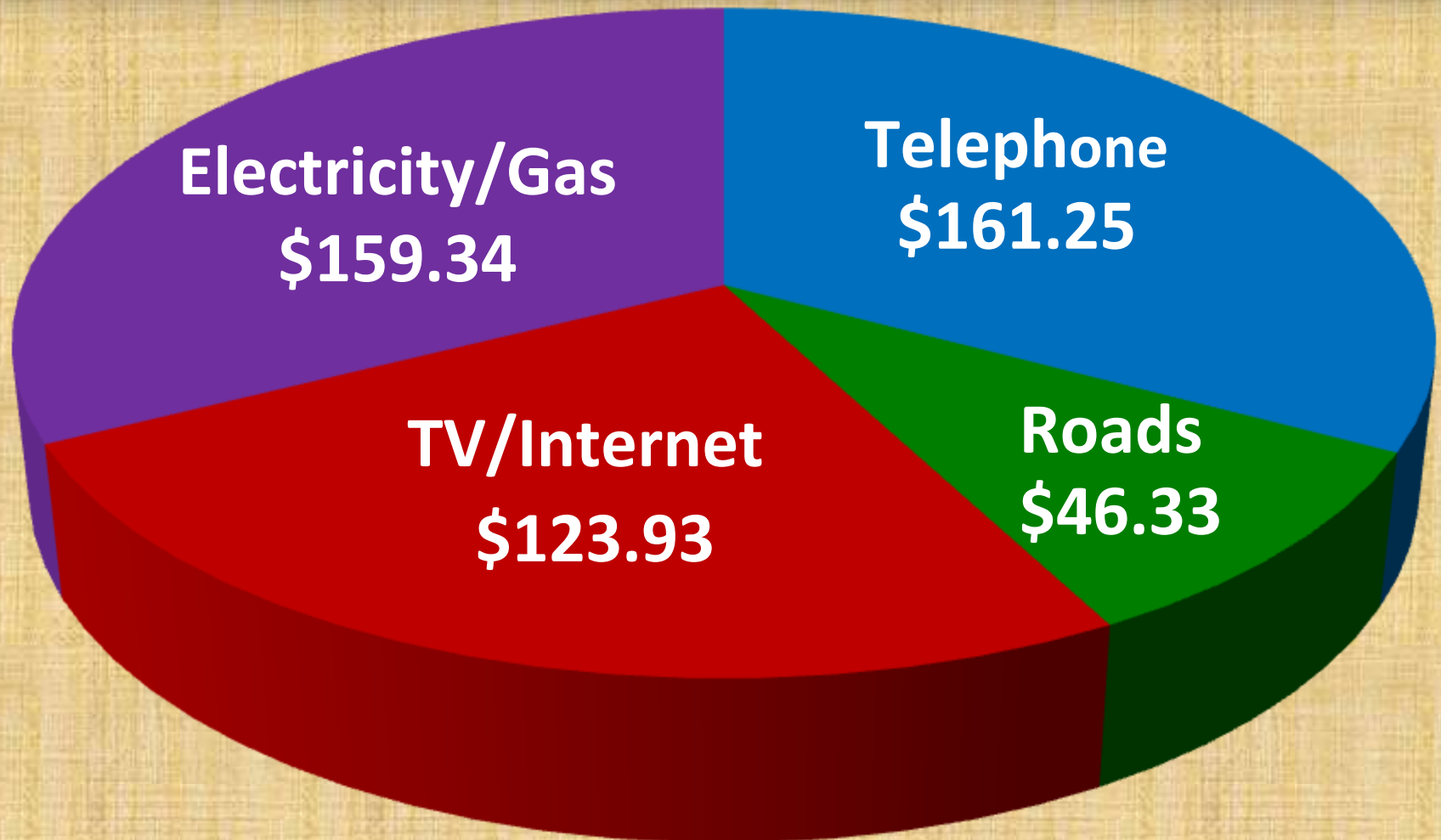
83 %

Transportation network is important to ensuring  
national defense and emergency response





# Average Monthly Household Expenditures





**Construction Zone Locations**

**Live Traffic Conditions**

**Weather Radar**

**Live Traffic Cameras (Coming Soon)**





[ArkansasHighways.com](http://ArkansasHighways.com)

Litter Hotline 866-811-1222



[@AHTD](https://twitter.com/AHTD)

