

Arkansas State Highway and Transportation Department



House & Senate Transportation Committee

Tuesday, February 25, 2014

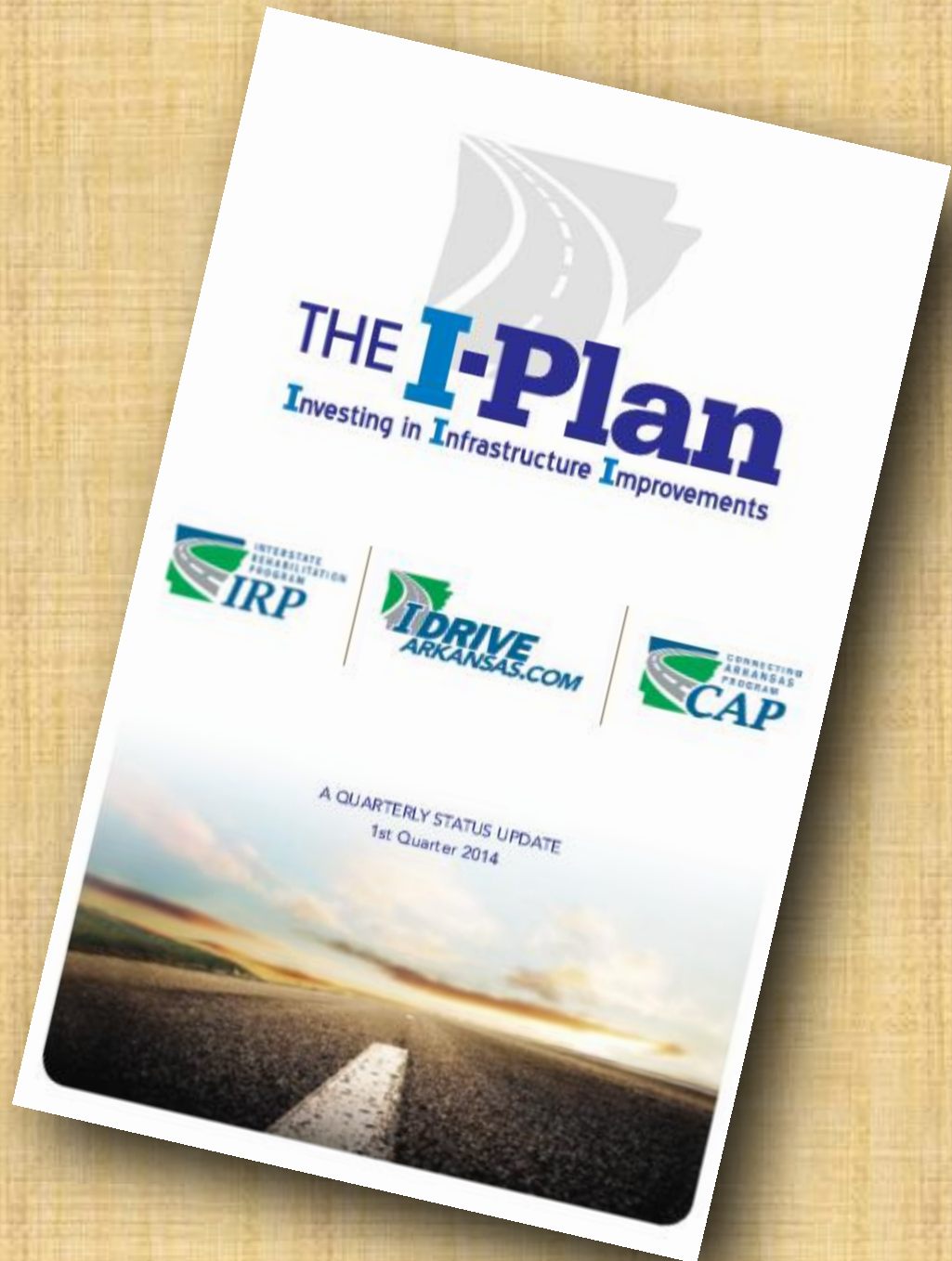
Recent Voter Approved Programs

**November
2011**



**November
2012**







- **\$575 million in GARVEE Bonds**
- **No new or increased taxes**



Public Commitment

Use the \$1.2 billion available under the program to rehabilitate or reconstruct approximately 450 miles of Interstate highways beginning in 2013 and continuing until approximately 2026.



➤ **\$575 million in GARVEE Bonds**

- ✓ **Maturities of 12 years or less**
- ✓ **Must be issued by December 31, 2015**

- **First series sold in September 2012**
- **Produced \$230 million for construction**

- **Second series sold in October 2013**
- **Produced \$201 million for construction**



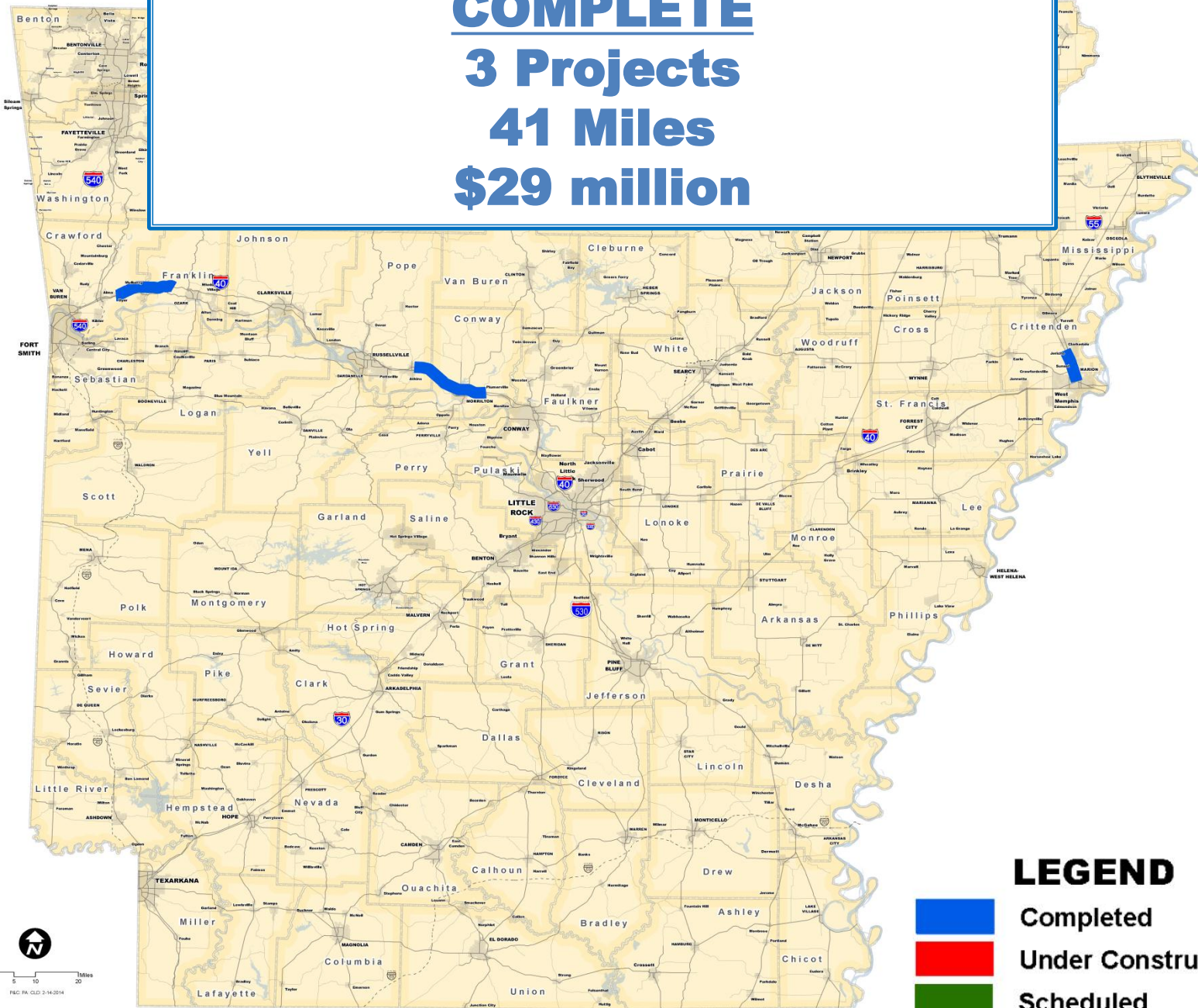
- **\$575 million in GARVEE Bonds**
 - ✓ **Issued \$369 million**
 - ✓ **\$206 million still available before December 31, 2015**



Planned IRP Totals

- ✓ \$1.2 billion
- ✓ 75 projects
- ✓ 458 miles

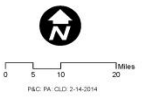
COMPLETE
3 Projects
41 Miles
\$29 million



LEGEND

-  Completed
-  Under Construction
-  Scheduled

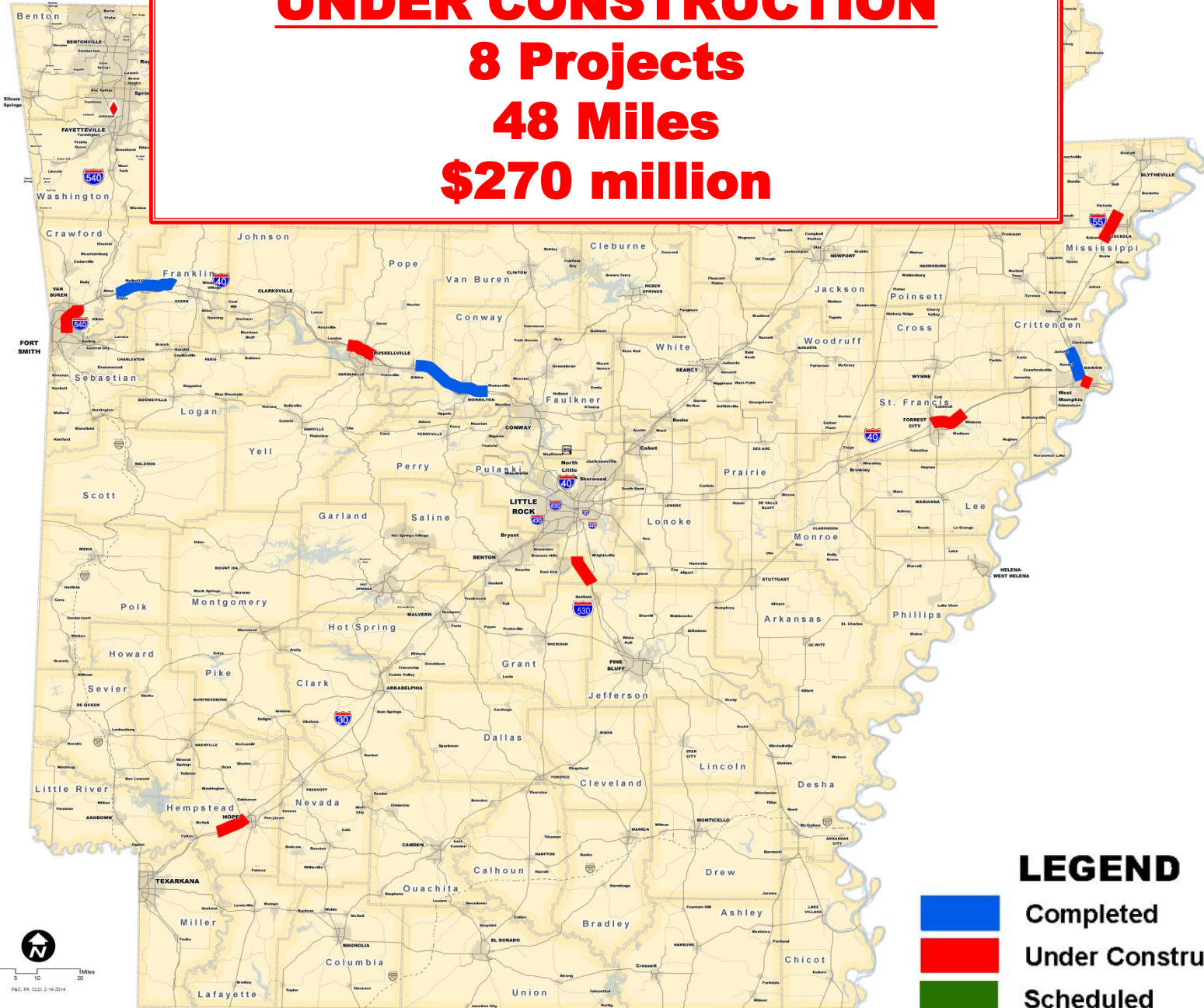
Interstate Rehabilitation Program
Job Status



F&C PA. CDD 3-14-2014

UNDER CONSTRUCTION

8 Projects
48 Miles
\$270 million

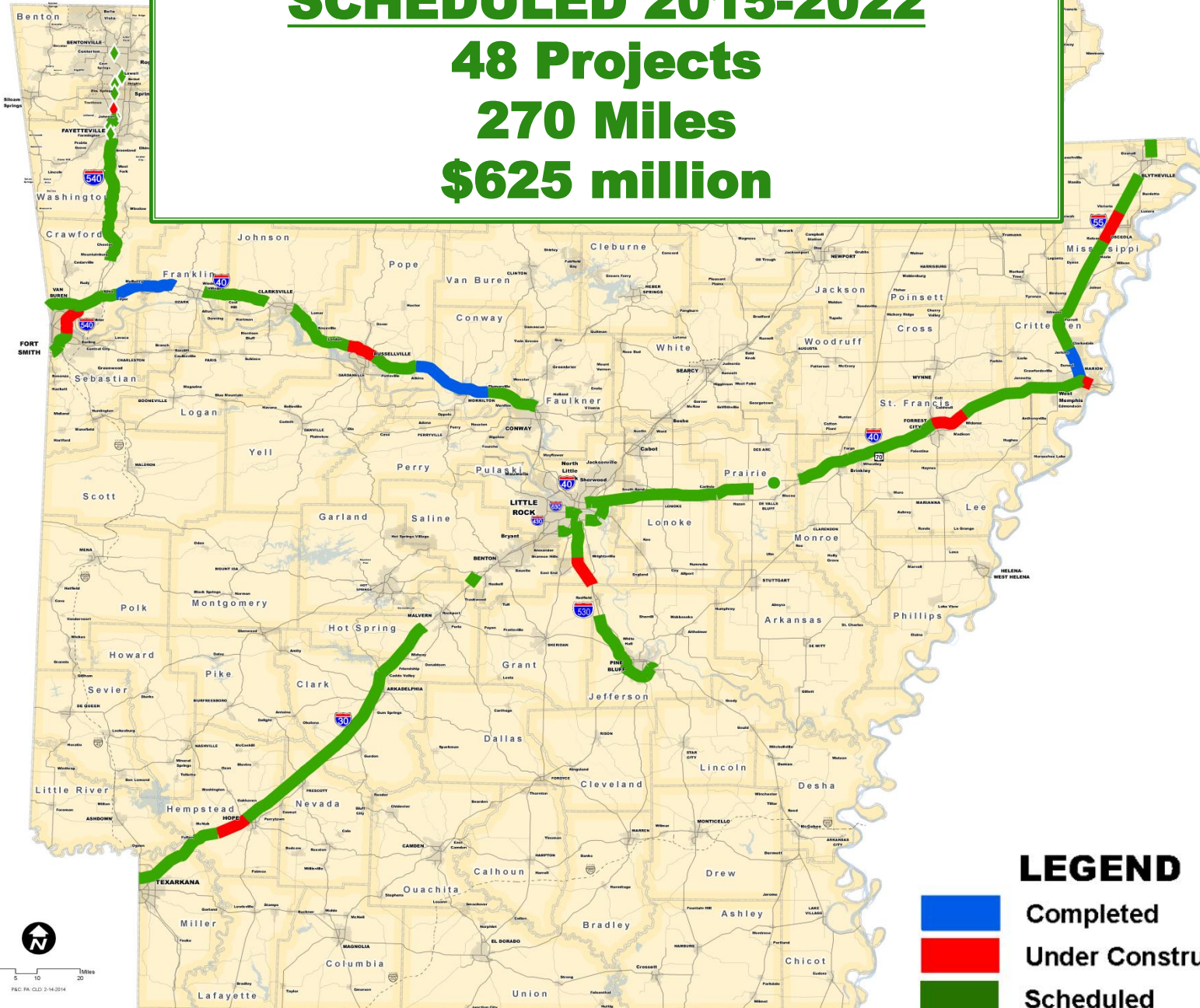


Interstate Rehabilitation Program
Job Status

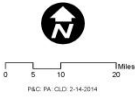


SCHEDULED 2015-2022

48 Projects
270 Miles
\$625 million

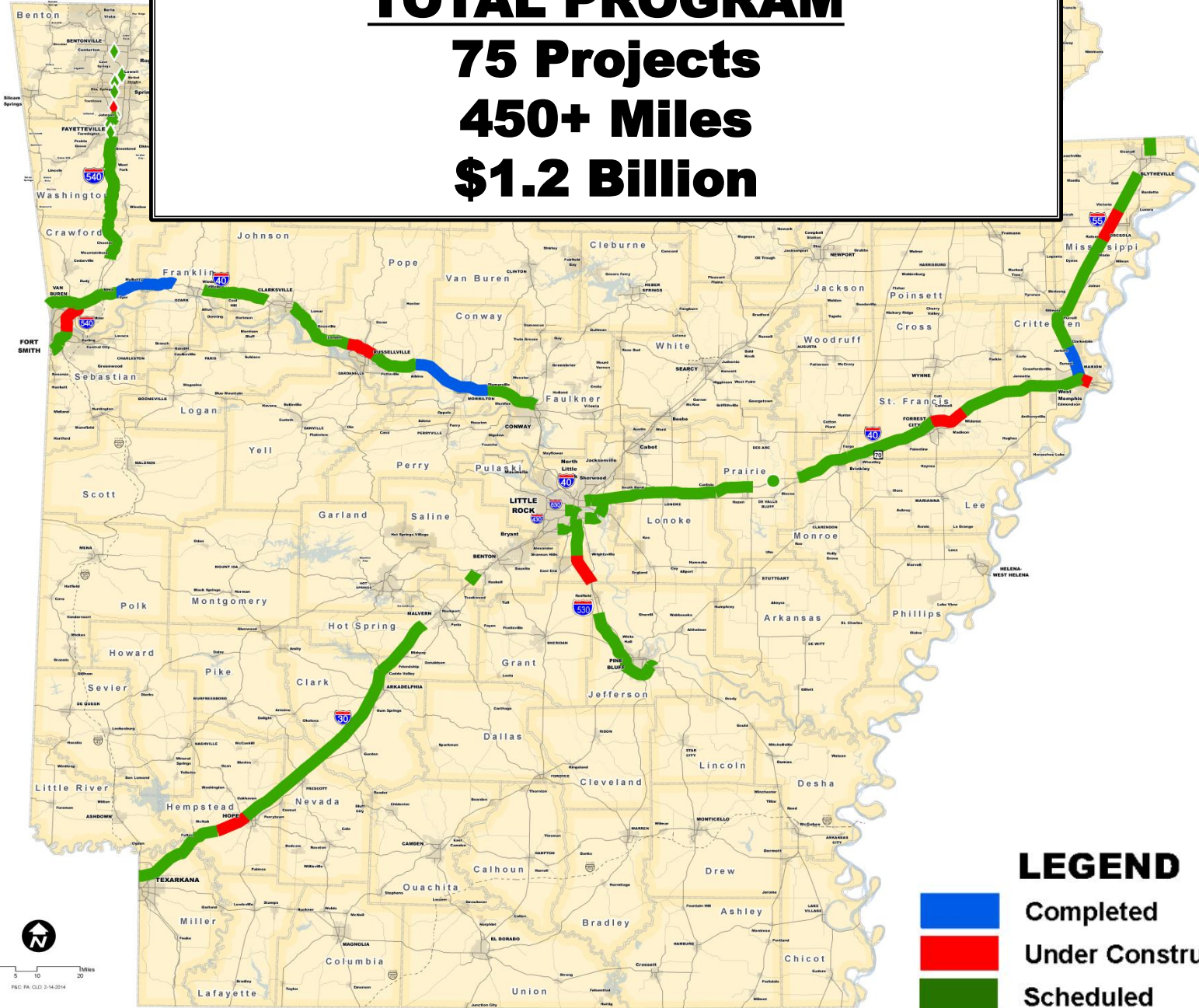


Interstate Rehabilitation Program
Job Status

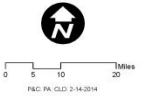


TOTAL PROGRAM

75 Projects
450+ Miles
\$1.2 Billion



Interstate Rehabilitation Program
Job Status



F&C: PA: CDD: 3-14-2014



- **58% voter approval**
- **10-year 0.5% increase in general sales tax**
- **\$1.3 billion in bonds**
- ✓ **New 4 lane Highways**
- ✓ **Widen 2 lane highways**
- ✓ **Adds lanes to existing 4 lane highways**



Public Commitment

Begin, continue, or complete the widening of the identified highway corridors to four or more travel lanes using the \$1.8 billion available during the 10 years the temporary sales tax increase is in place.

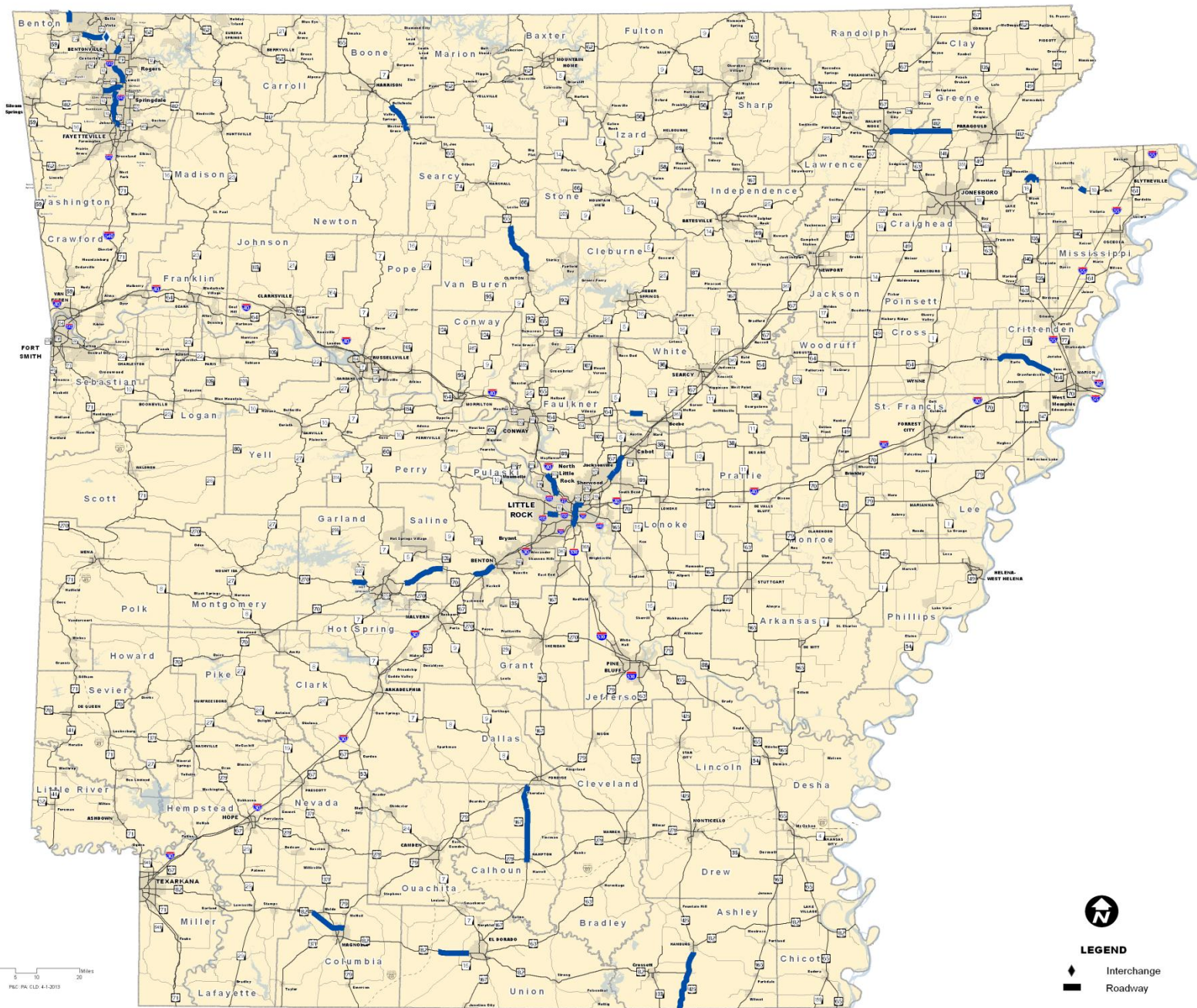


Scheduled Projects

Job	County	Route	Job Name	Length	Amount
CA0609	Pulaski	I-40	Hwy 365 – I-430 Widen I-430 Interchange	6	\$35 million
CA0904	Benton	Hwy 71	Hwy 71B – Hwy 72 South (Bella Vista Bypass)	6	\$30 million
CA0907	Benton	Hwy 412	Hwy 112 – I-540	4	\$125 million
Total for 2014				16	\$190 million

Year	Projects	Length	Amount
2015	9	47	\$345 million
2016	8	31	\$200 million
2017-2019	11	87	\$740 million

Connecting Arkansas Program



LEGEND

- Interchange
- Roadway





Highway Revenue Distribution

70/15/15 Formula

- ✓ **70% Arkansas Highway & Transportation Dept**
- ✓ **15% Arkansas Counties**
- ✓ **15% Arkansas Cities**



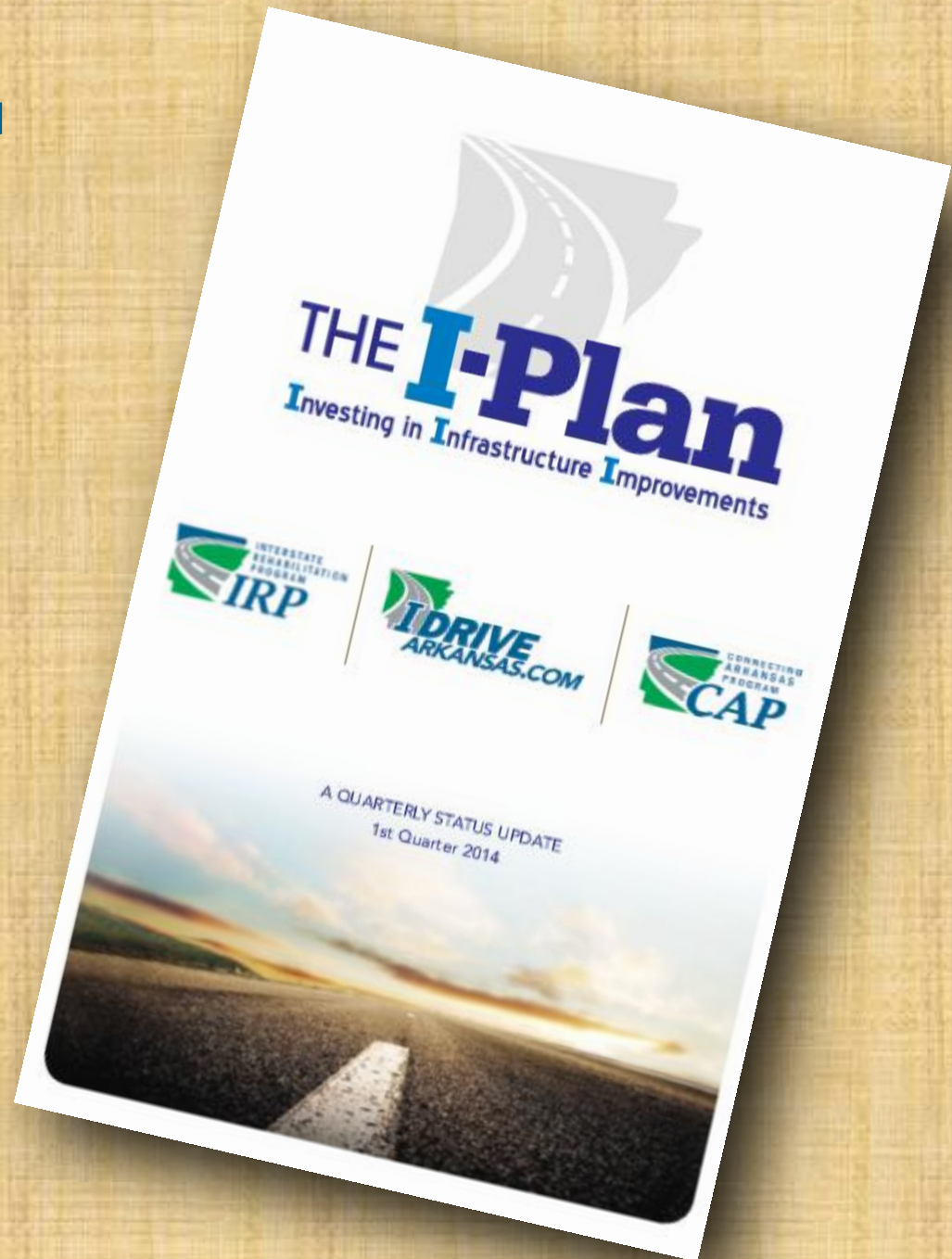
- **58% voter approval**
- **10-year 0.5% increase in general sales tax**
- **\$1.3 billion in bonds**
- ✓ **First series sold in September 2013**
- ✓ **Produced \$494 million for construction**
- ✓ **\$831 million remaining**
- ✓ **No other sales planned**



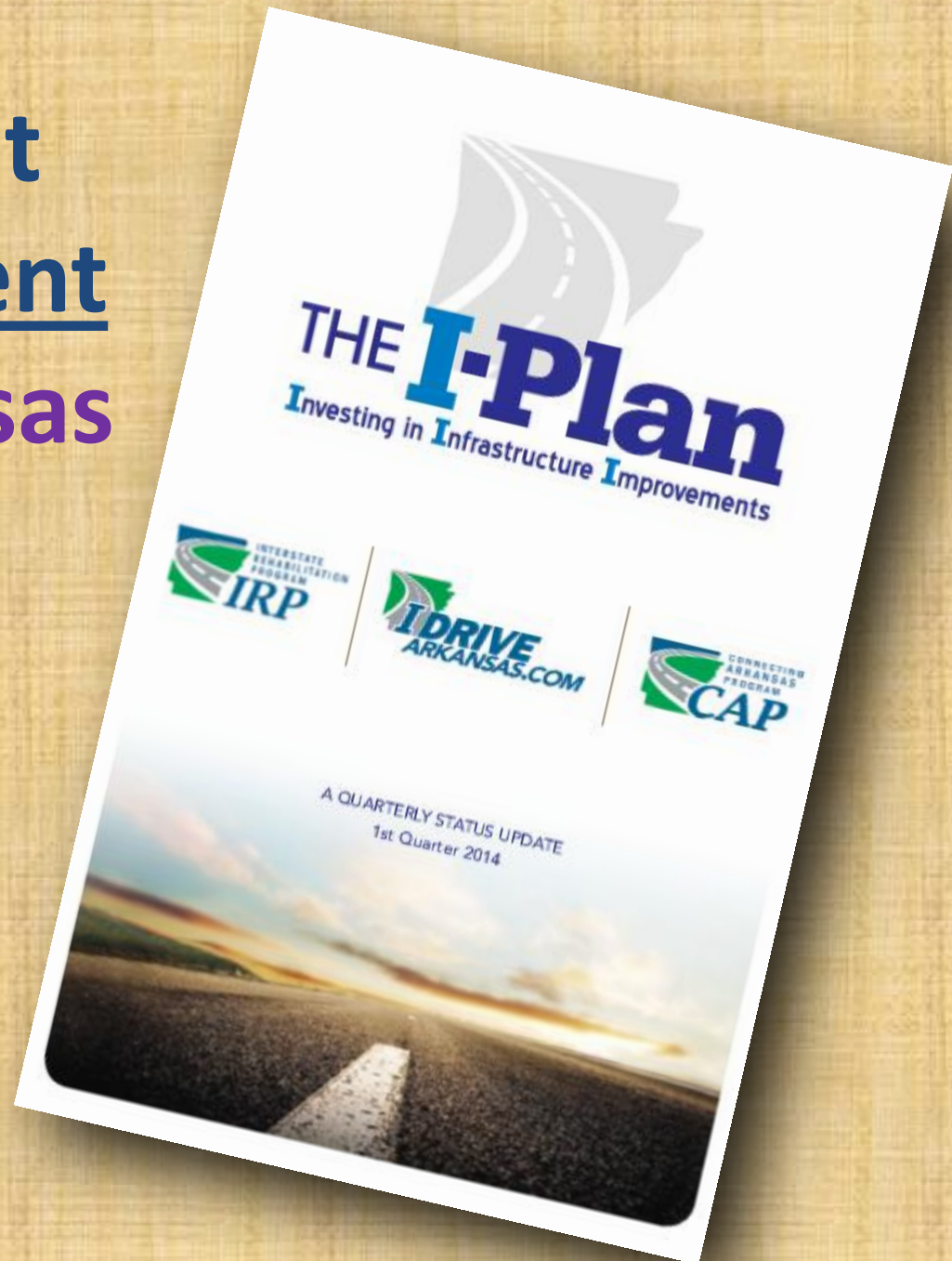
- ✓ **Live Traffic Conditions**
- ✓ **Construction Zones**
- ✓ **Alternate Routes**
- ✓ **Rest Areas**
- ✓ **Welcome Centers**
- ✓ **Park-and-Ride Lots**
- ✓ **Weight Restricted Roads & Bridges**
- ✓ **Weather Radar**
- ✓ **Live Traffic Cameras (Coming Soon)**



A screenshot of the IDRIVE ARKANSAS website interface. The top navigation bar includes the "IDRIVE ARKANSAS" logo and several menu items: "Map", "Construction Programs", "Toward Zero Deaths", and "Contact". The main content area is a map of Arkansas showing traffic conditions. A red arrow points to a location near Searcy, Arkansas. The map uses color coding: green for normal traffic, yellow for slow, red for very slow, and black for stopped traffic. Orange lines indicate construction zones. A "Map Key" is visible in the bottom-left corner, detailing the traffic and construction symbols. The bottom of the page contains copyright information for 2014, social media icons, and a footer with "Acceptable Use | Privacy | Feedback".



Your Investment
+ Our Commitment
= A Better Arkansas





[ArkansasHighways.com](https://www.arkansashighways.com)

Litter Hotline 866-811-1222



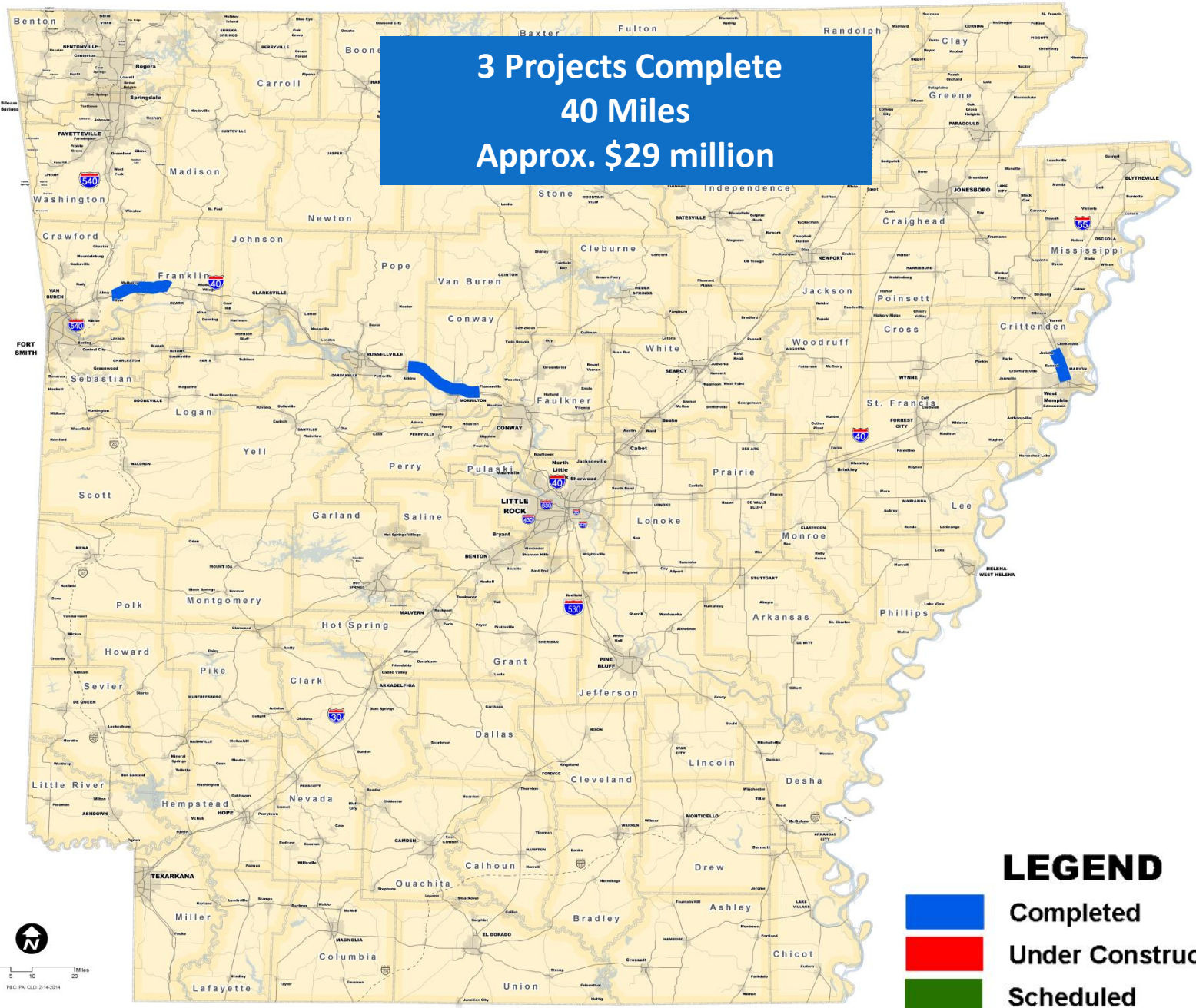
[@AHTD](https://twitter.com/AHTD)



Interstate Rehabilitation Program

Job Status

3 Projects Complete
40 Miles
Approx. \$29 million



LEGEND

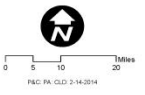
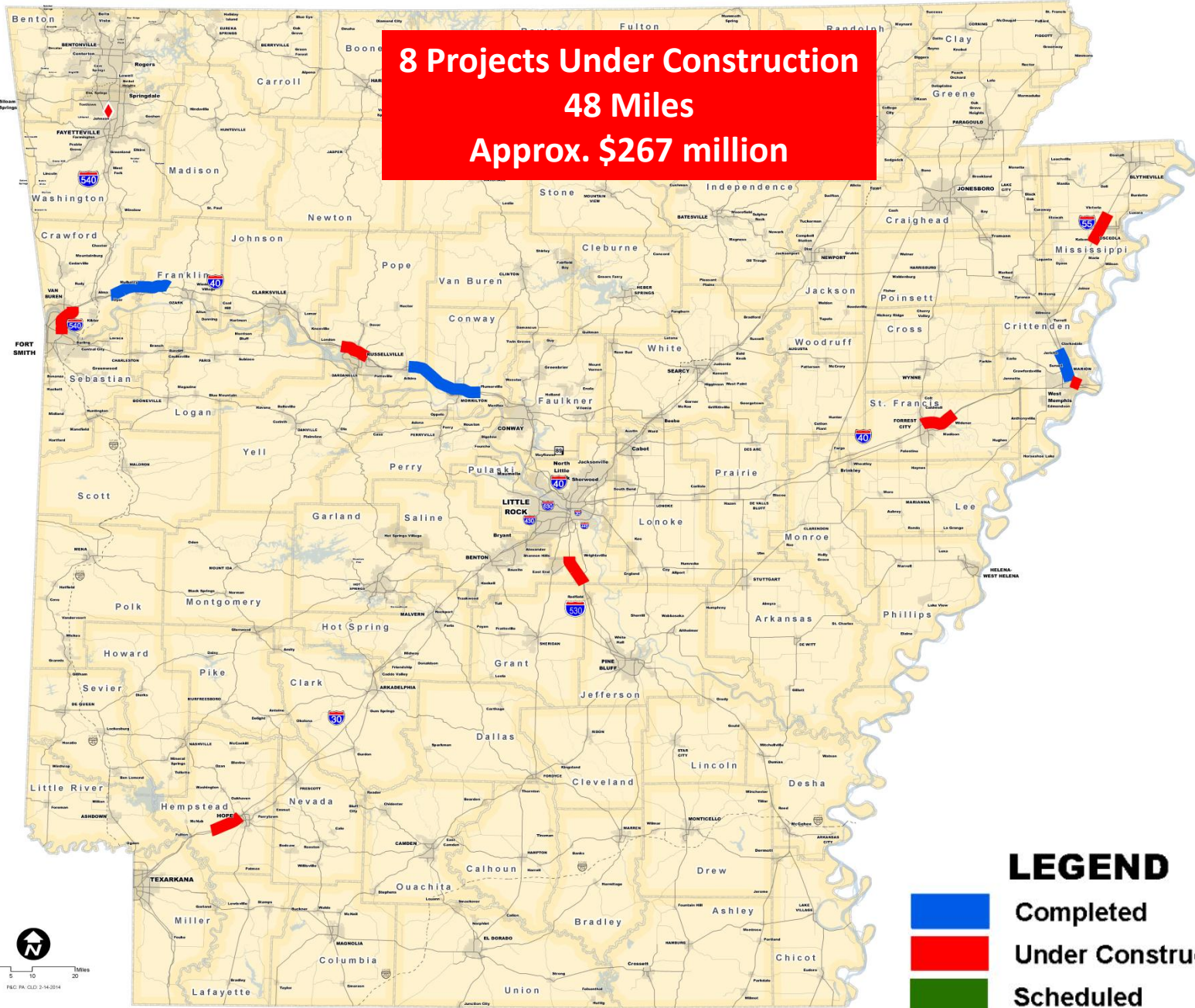
- Completed
- Under Construction
- Scheduled



0 5 10 20 Miles
F&C PA. CDD 3-14-2014

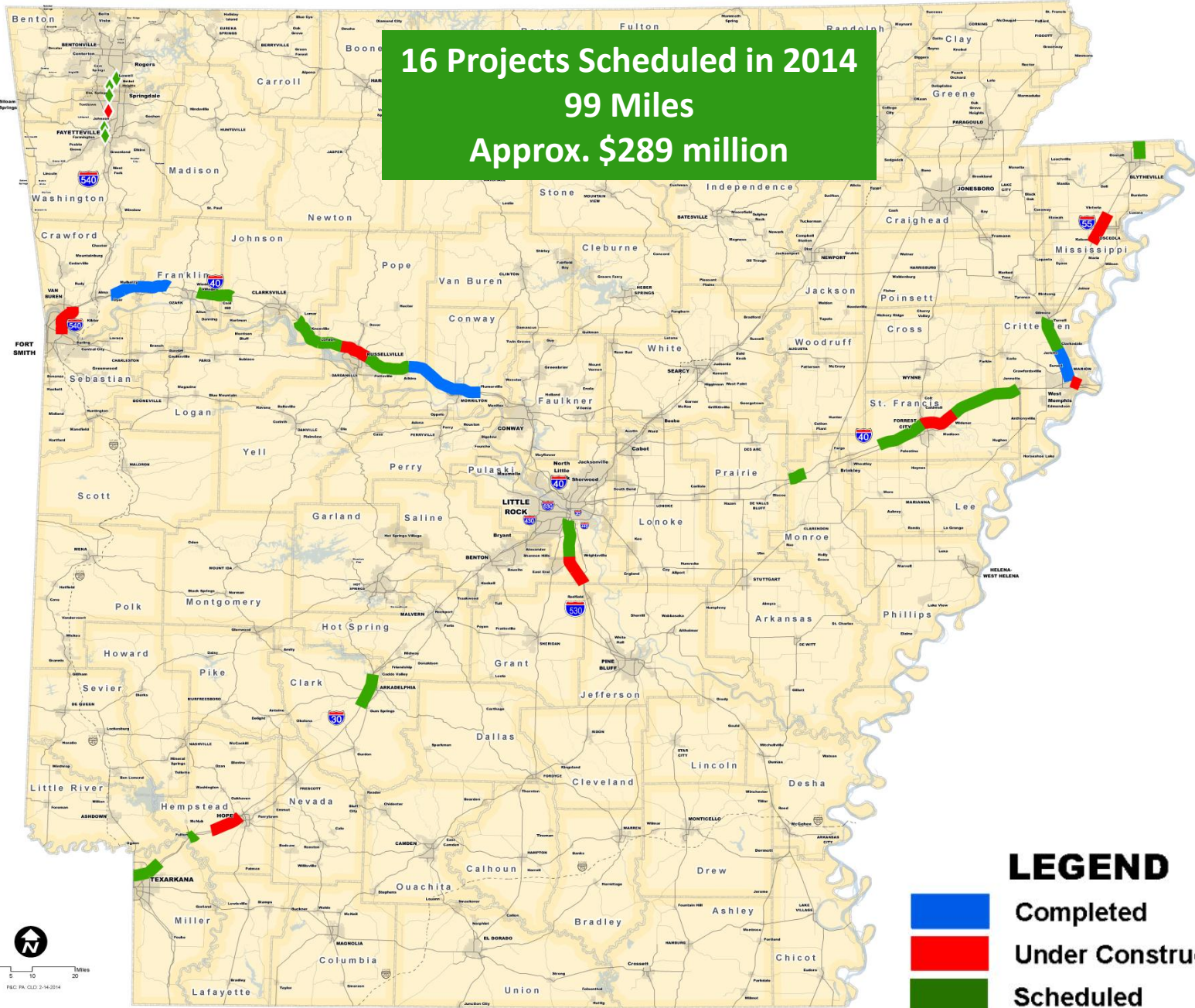
Interstate Rehabilitation Program Job Status

8 Projects Under Construction
48 Miles
Approx. \$267 million






Interstate Rehabilitation Program Job Status

16 Projects Scheduled in 2014
99 Miles
Approx. \$289 million



LEGEND

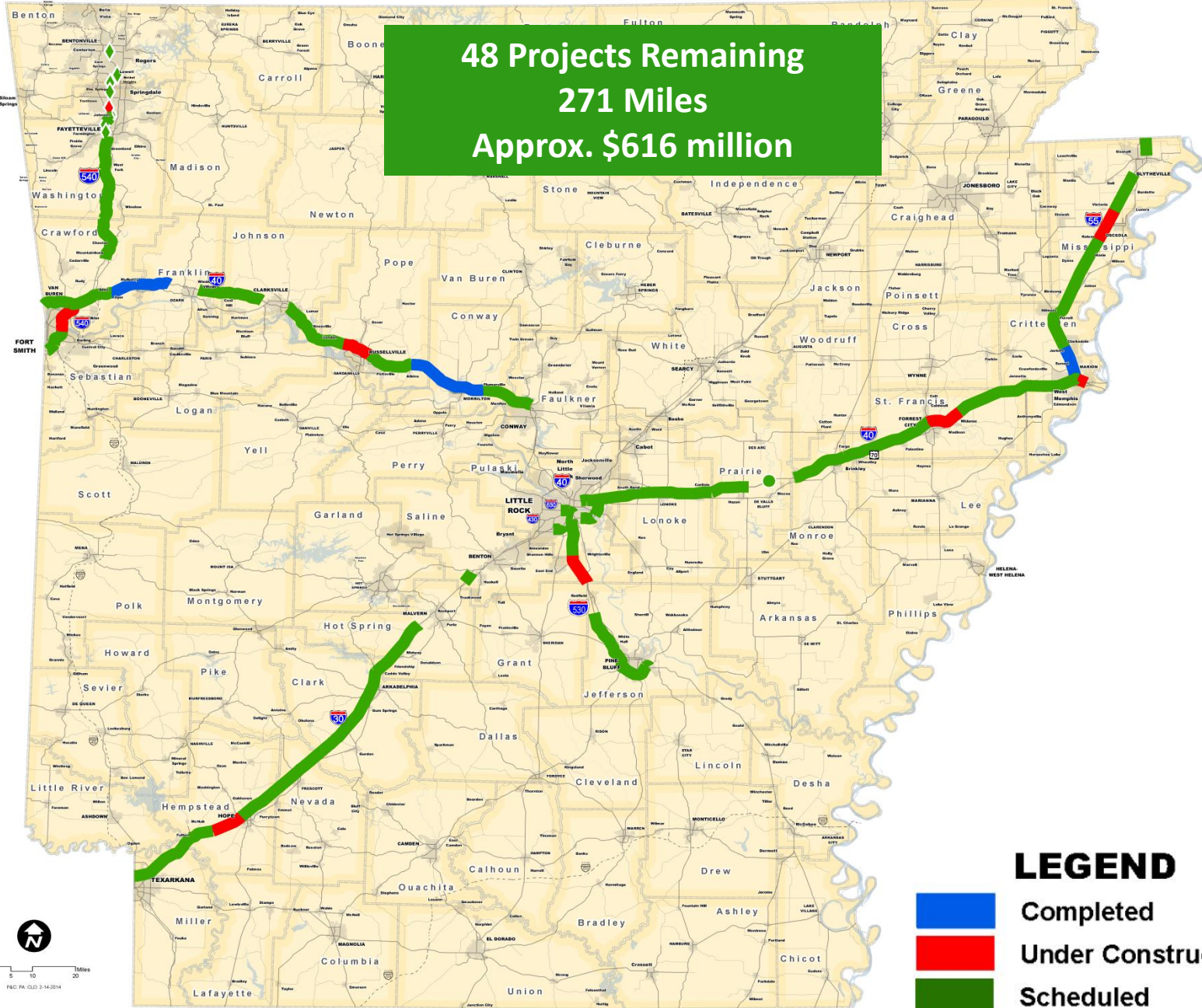
-  Completed
-  Under Construction
-  Scheduled






Interstate Rehabilitation Program

Job Status

48 Projects Remaining
271 Miles
Approx. \$616 million



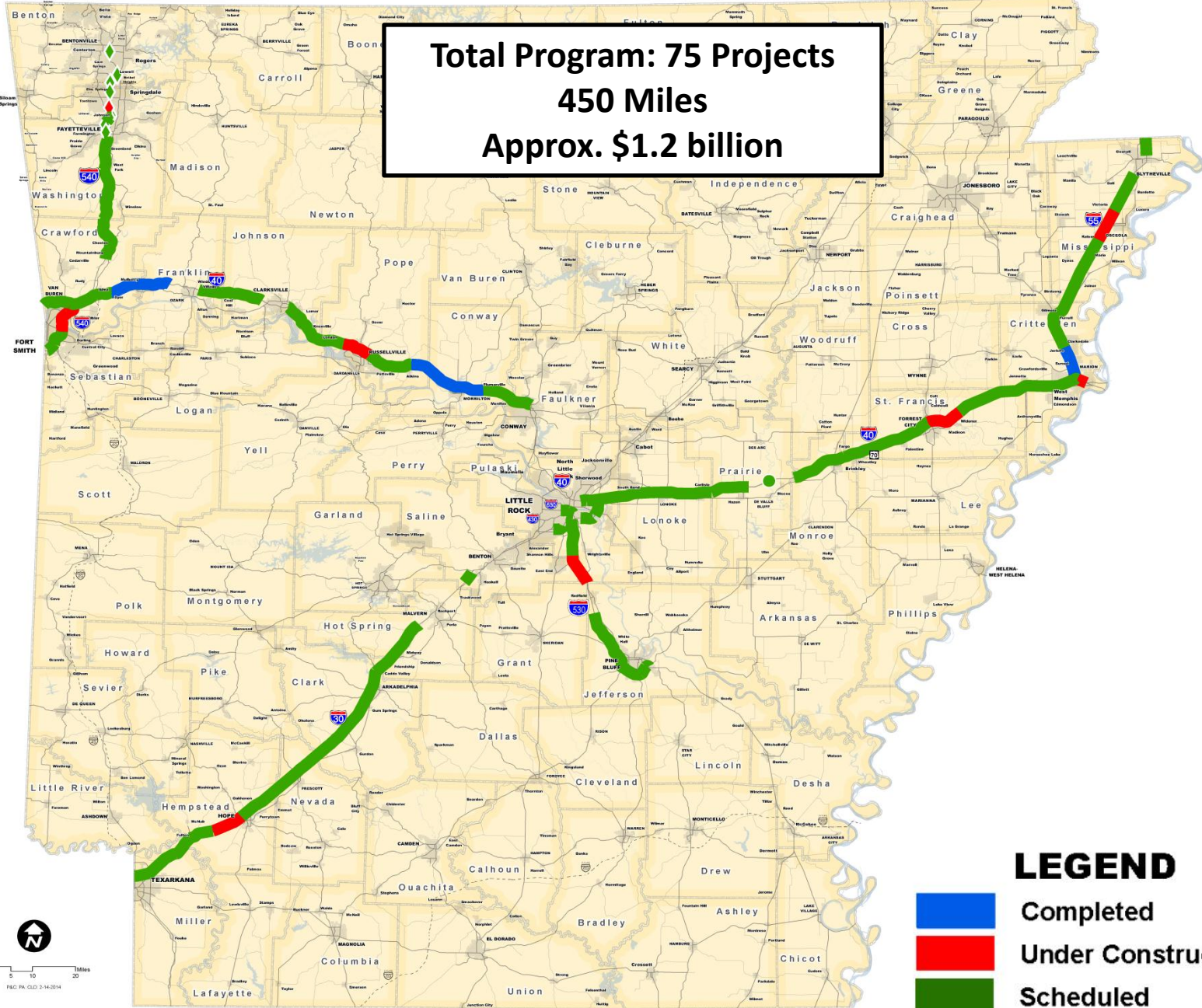
LEGEND

-  Completed
-  Under Construction
-  Scheduled





Interstate Rehabilitation Program Job Status

Total Program: 75 Projects
450 Miles
Approx. \$1.2 billion



LEGEND

-  Completed
-  Under Construction
-  Scheduled

