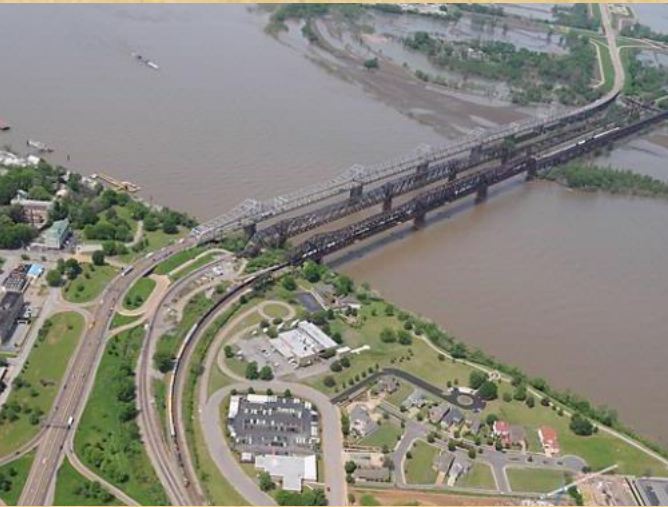


Arkansas State Highway and Transportation Department



Regional Logistics Council Meeting
Memphis Chamber of Commerce
Thursday, April 16, 2015



Regional Briefing – Arkansas



Lorie H. Tudor, P.E.
Deputy Director and Chief Operating Officer
Arkansas State Highway and Transportation Department



2011

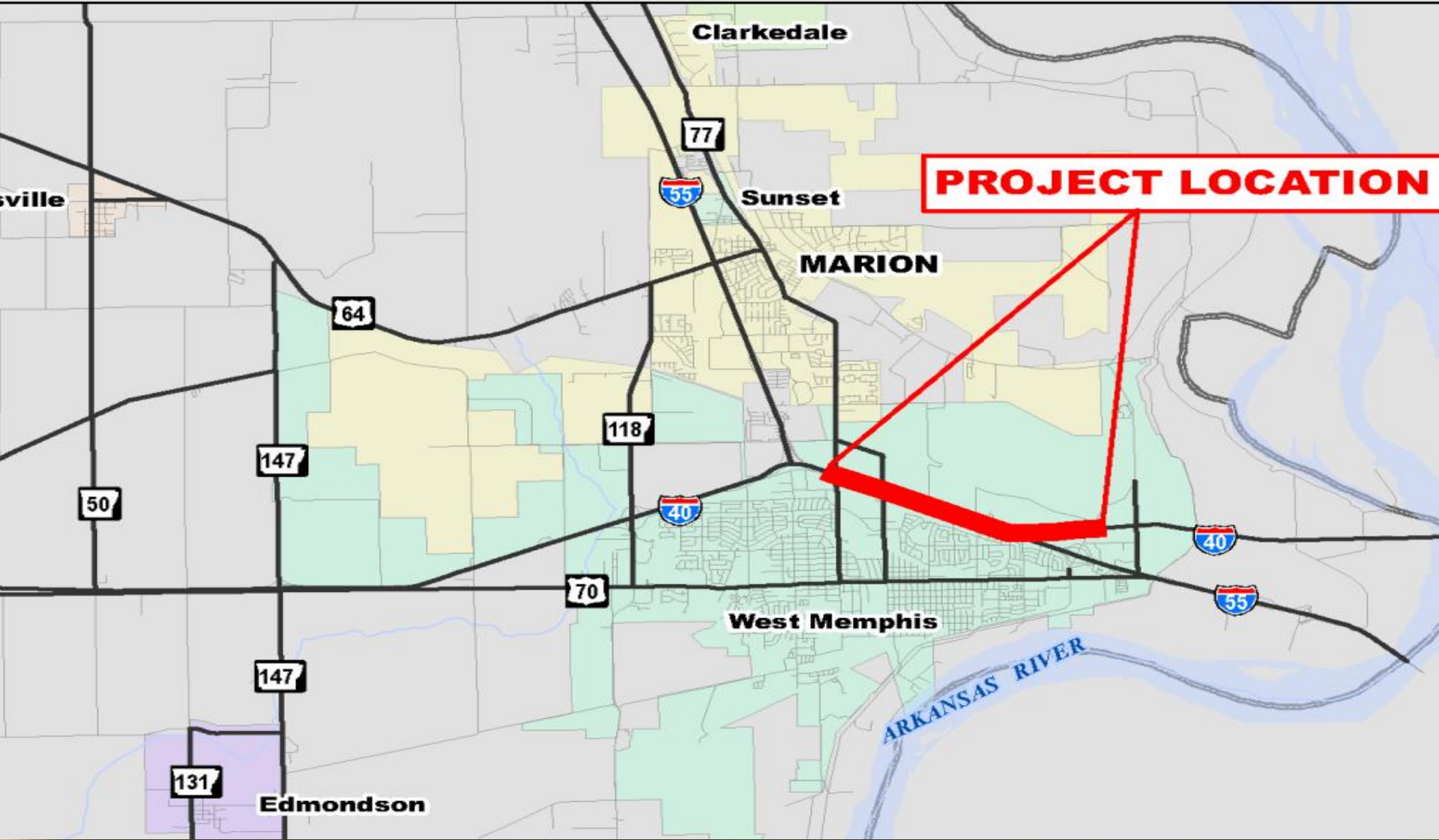


2012



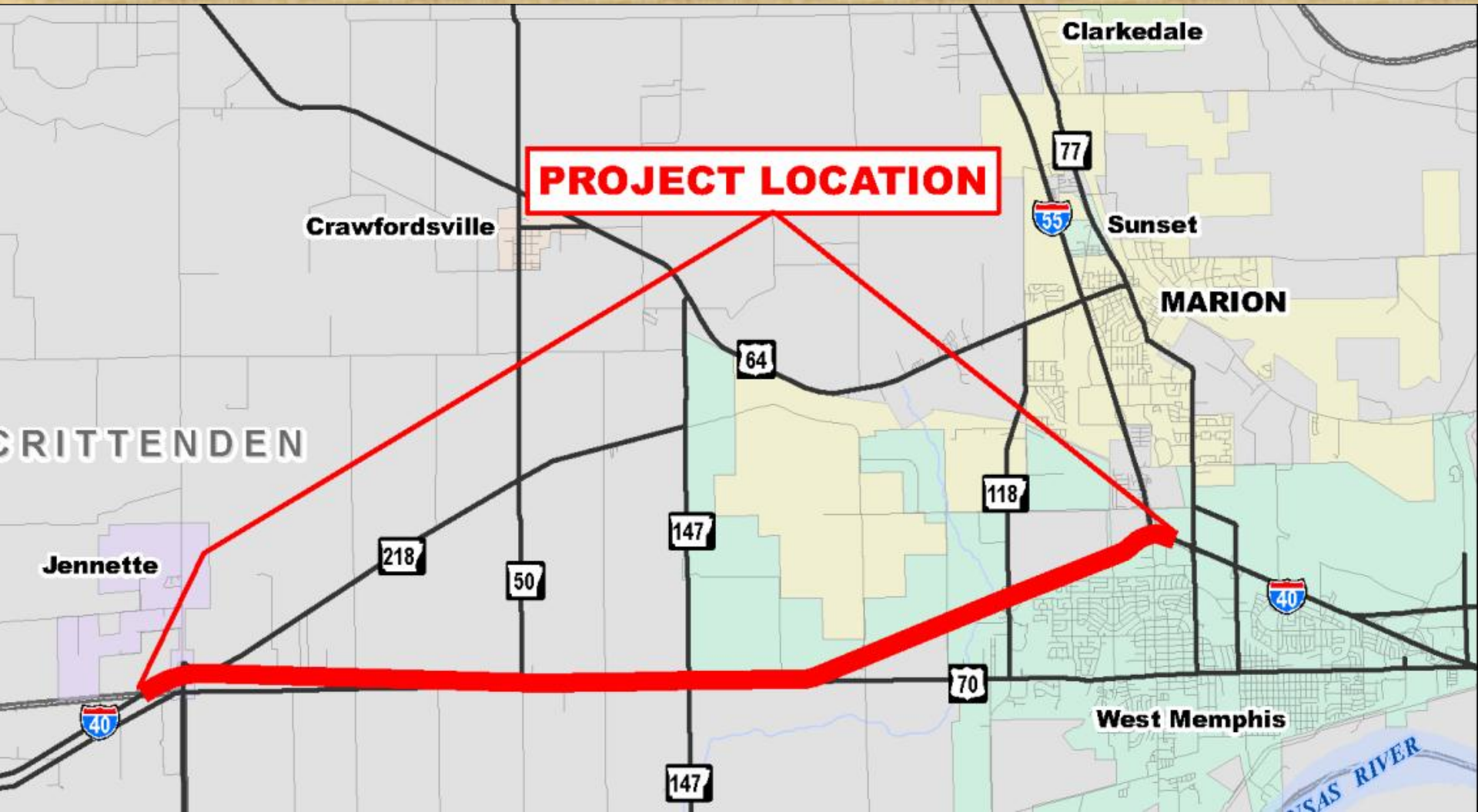


Hwy. 77 to I-55 Reconstruction 2 miles



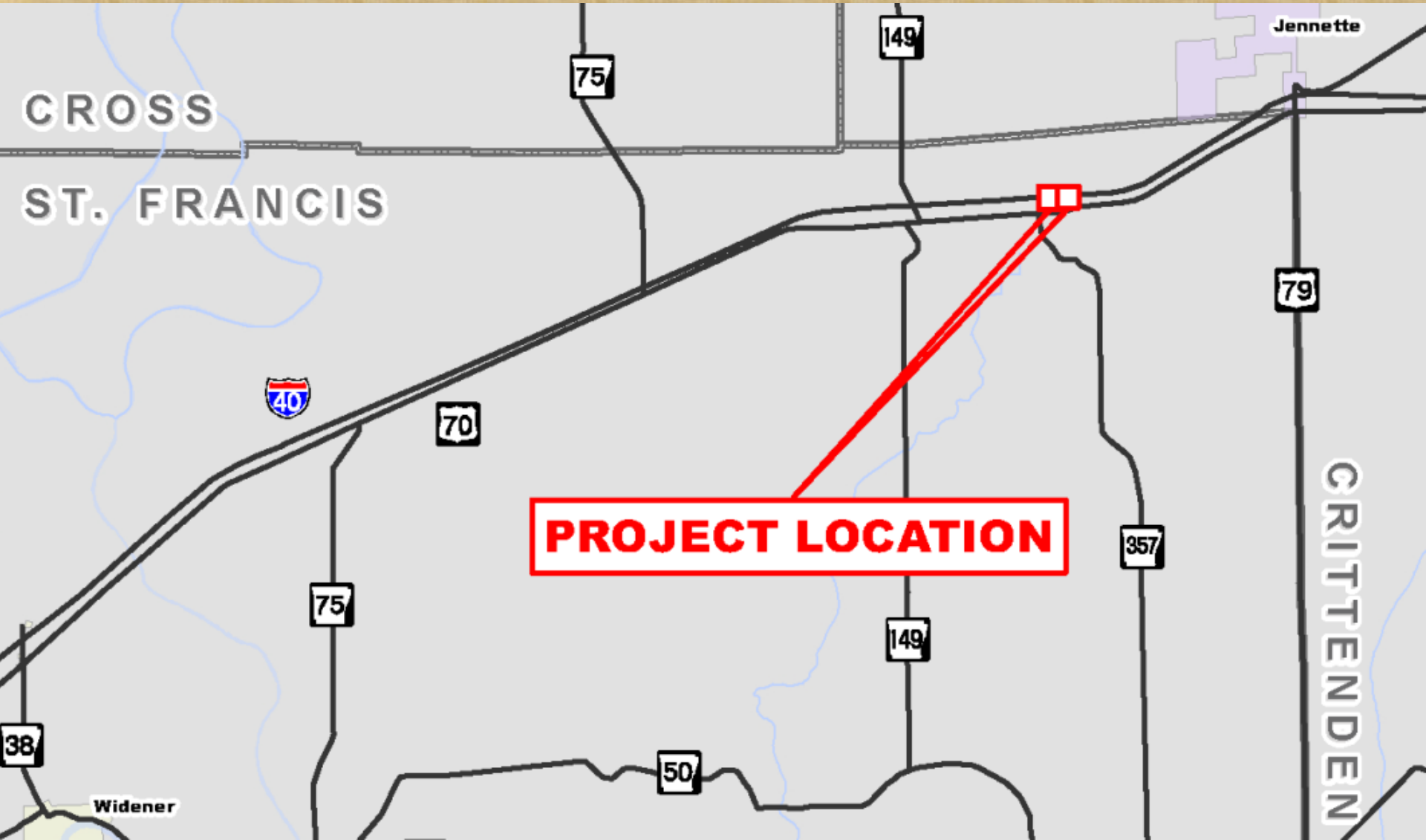


Shearerville – Hwy. 77
Resurfacing
12.9 miles



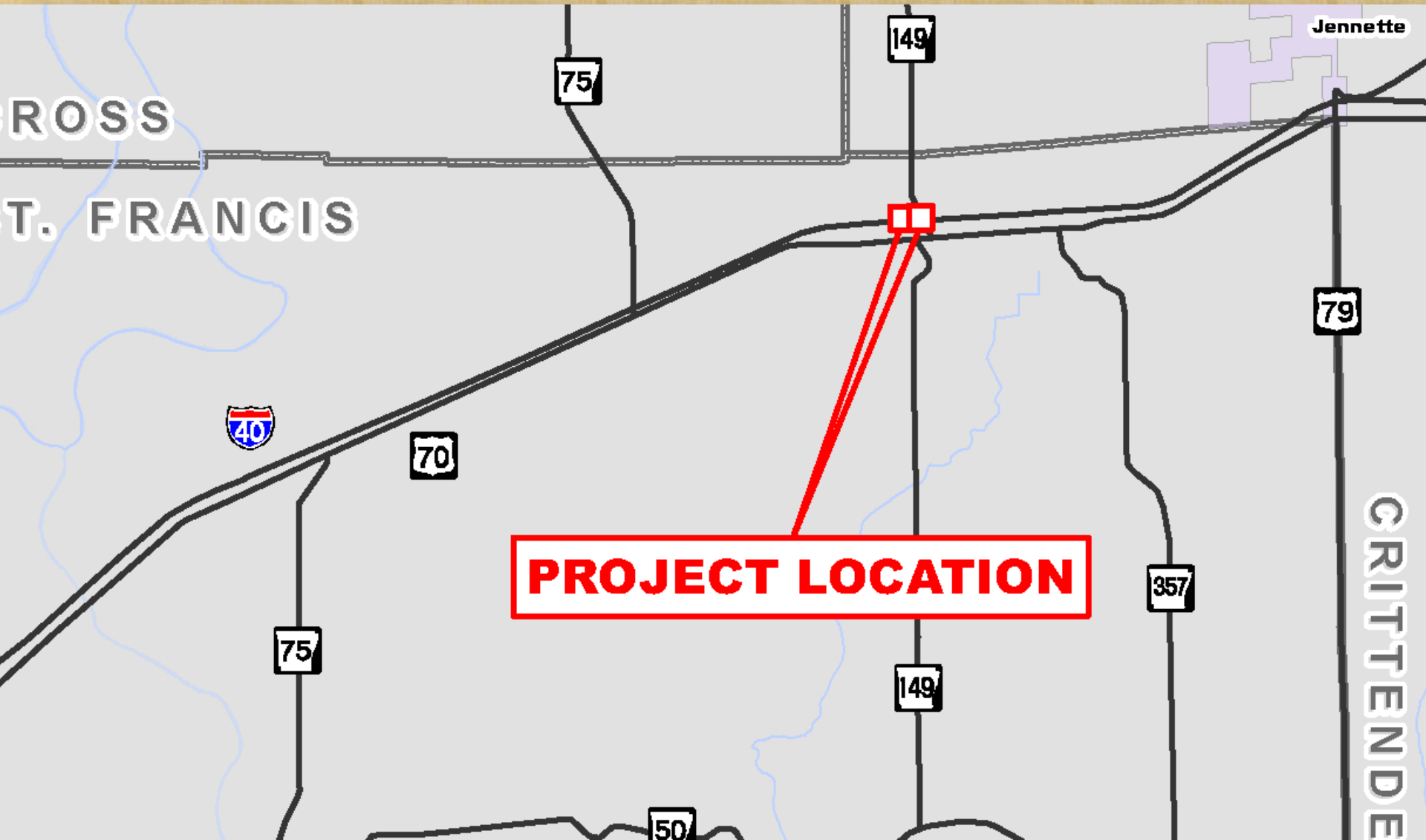


Blackfish Lake Bridge Reconstruction





Shell Lake Bridge Reconstruction



PROJECT LOCATION

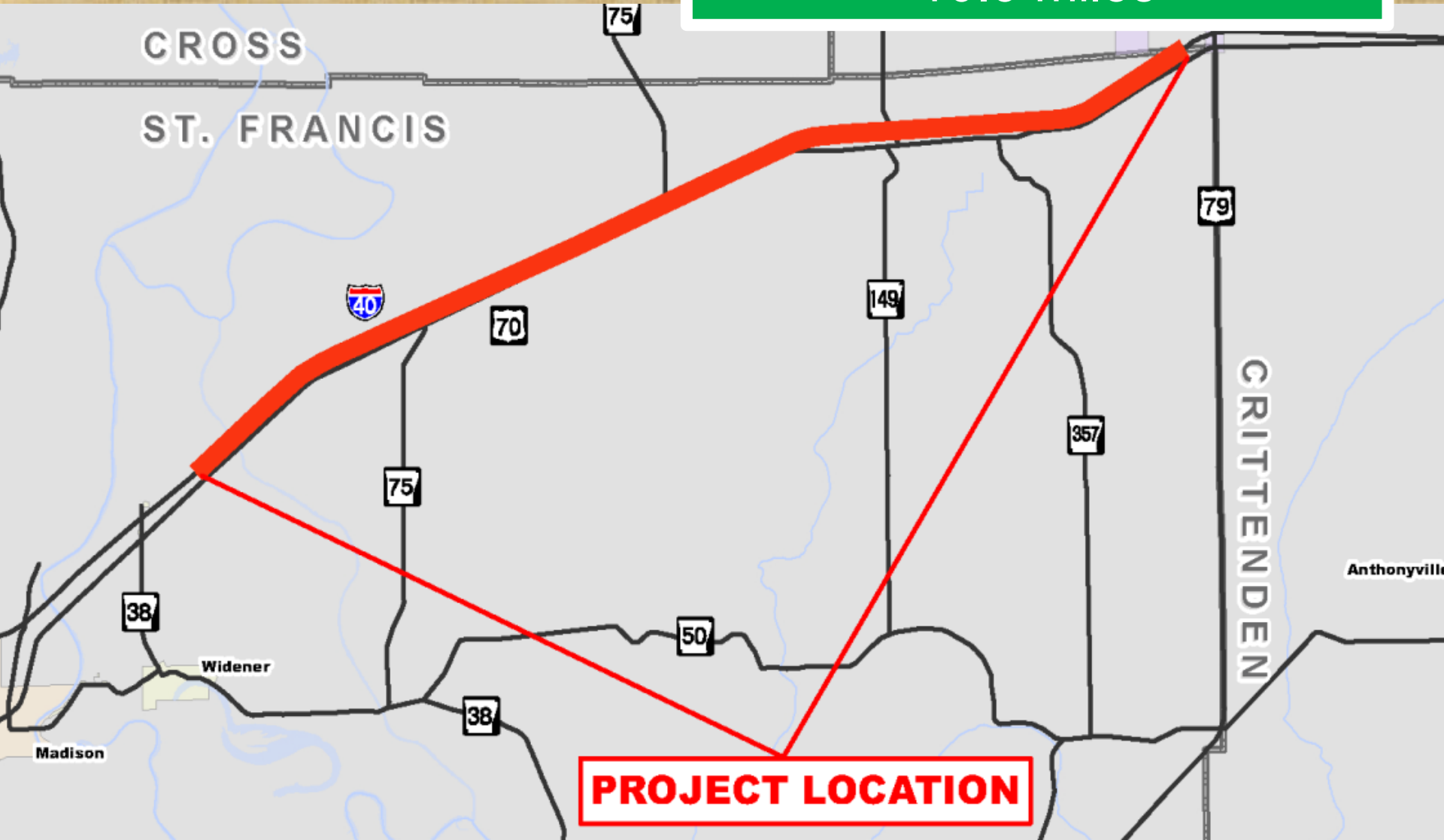


Fishing Lake Bridge Reconstruction

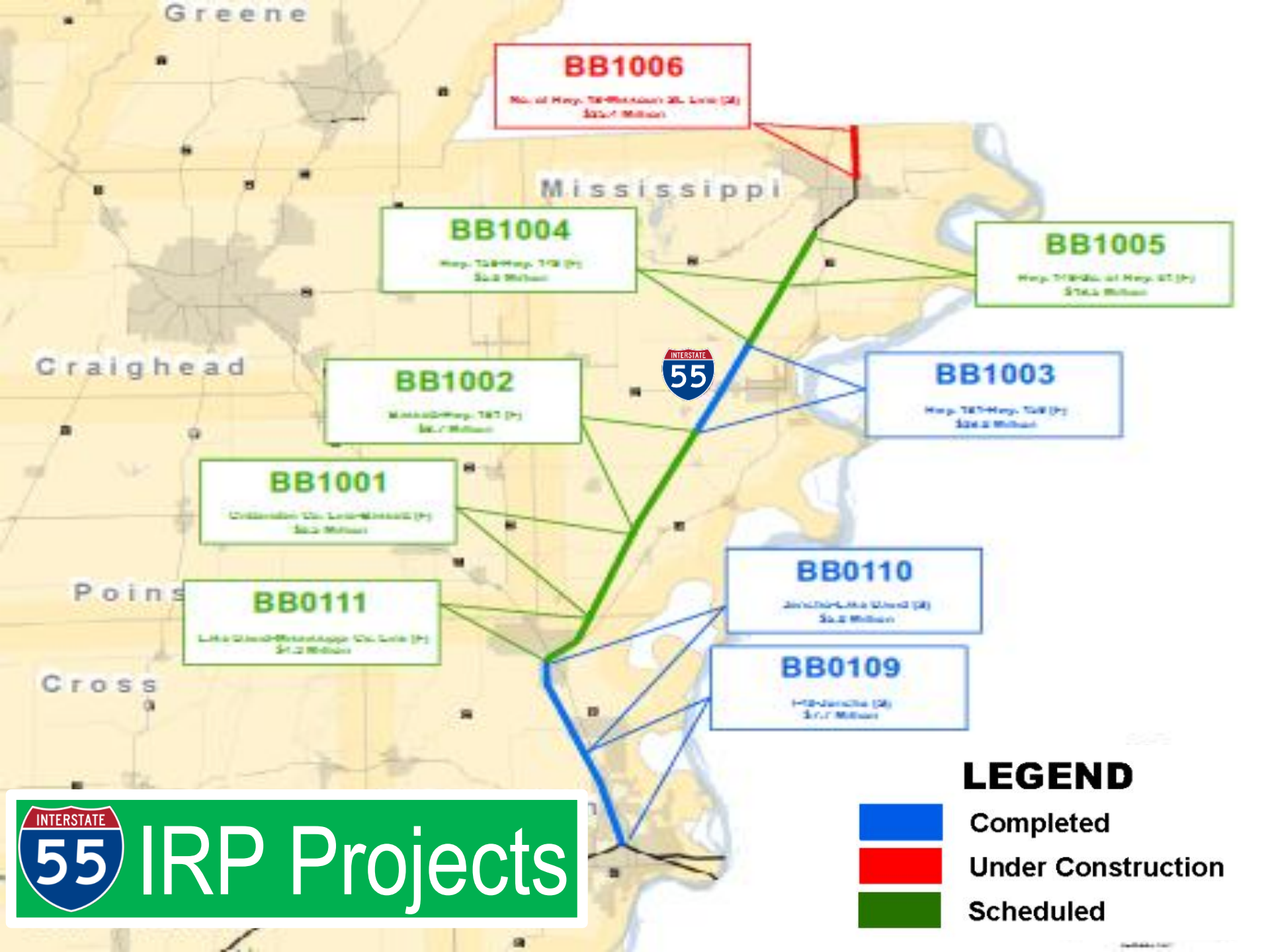




Shearerville – West
Pavement Improvement
16.5 miles



PROJECT LOCATION

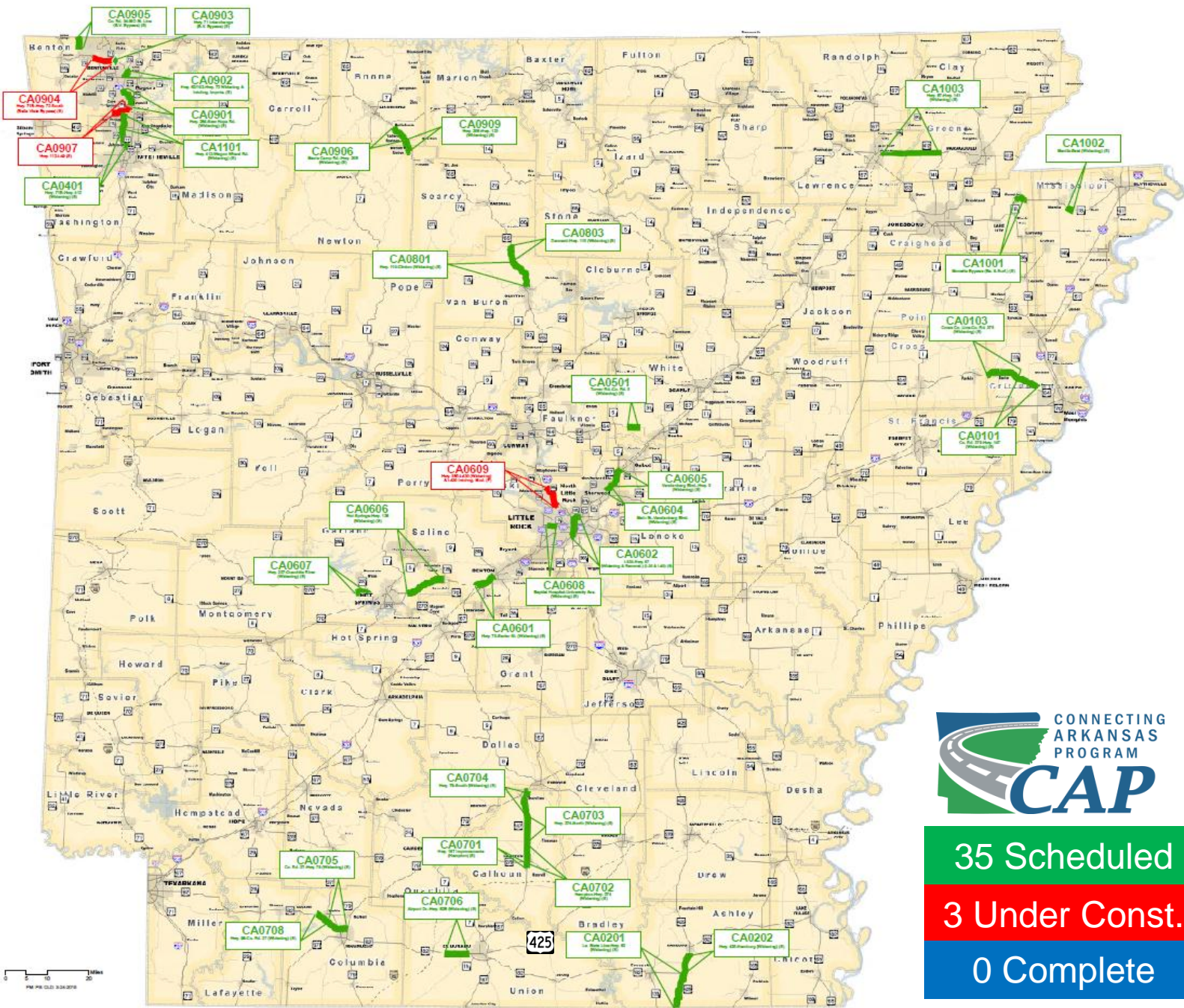


INTERSTATE 55 IRP Projects

LEGEND

- █ Completed
- █ Under Construction
- █ Scheduled

Connecting Arkansas Program



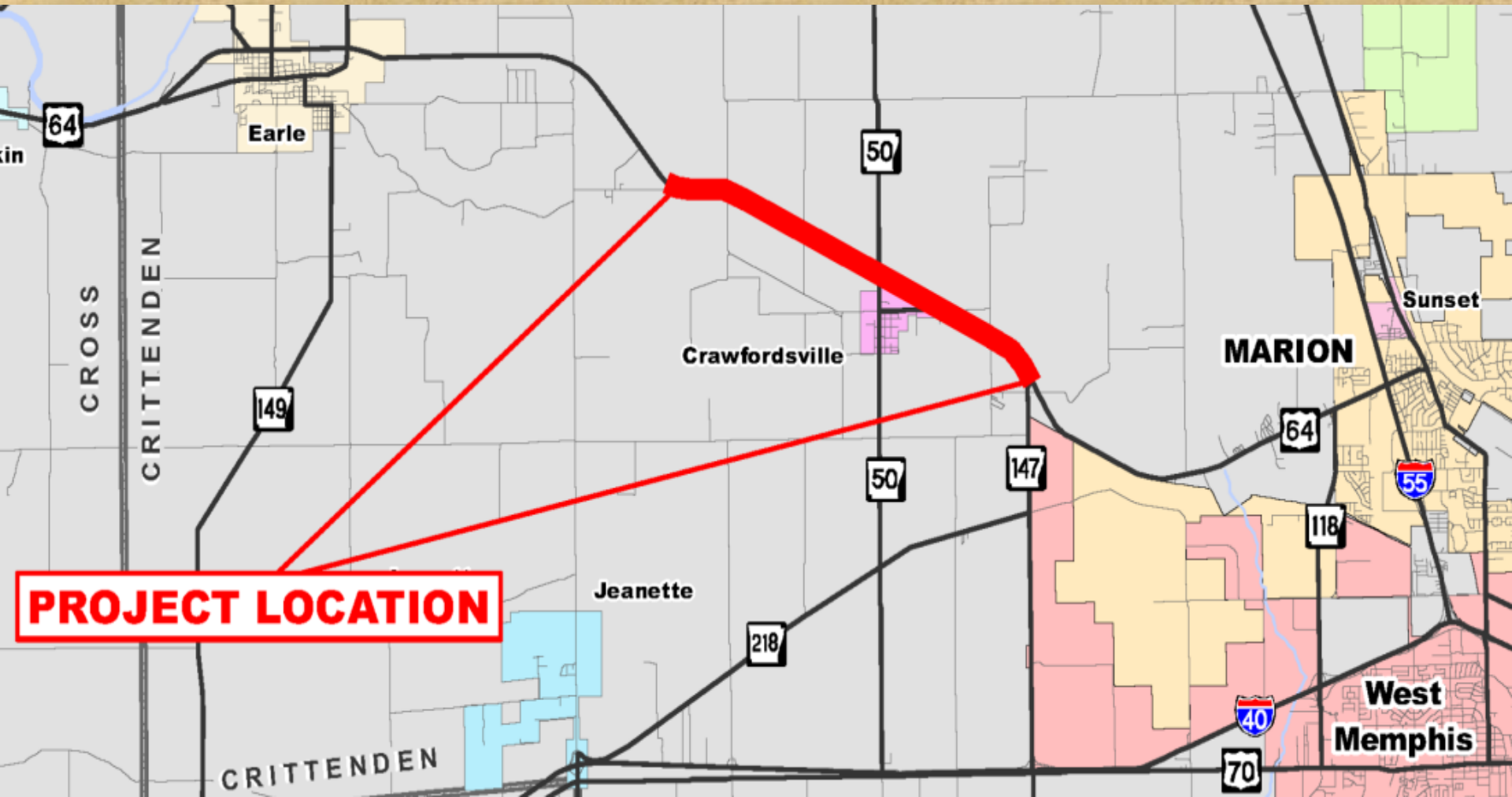
35 Scheduled

3 Under Const.

0 Complete



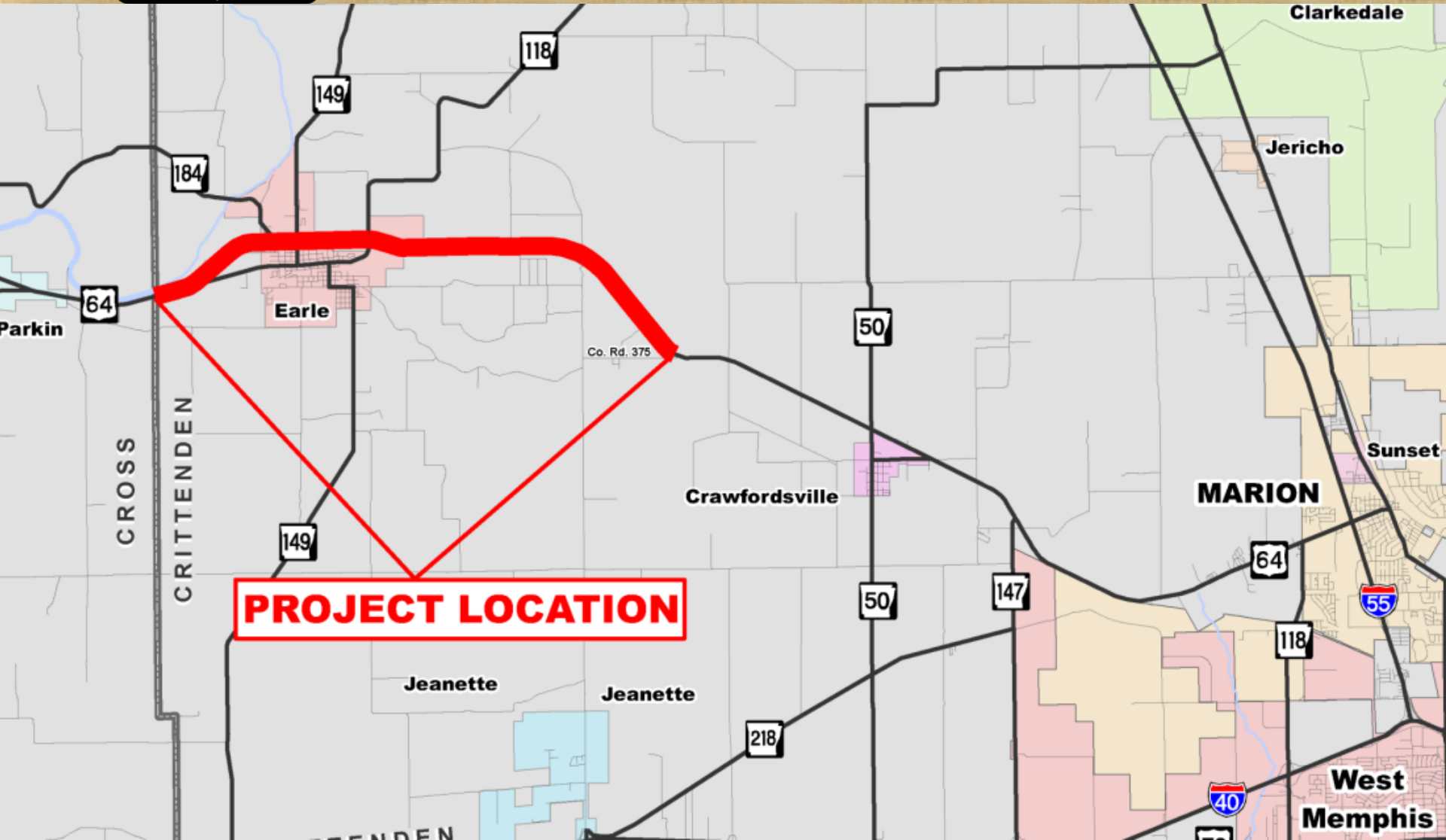
Co. Rd. 375-Hwy. 147 (Widening) (S)
5.5 miles





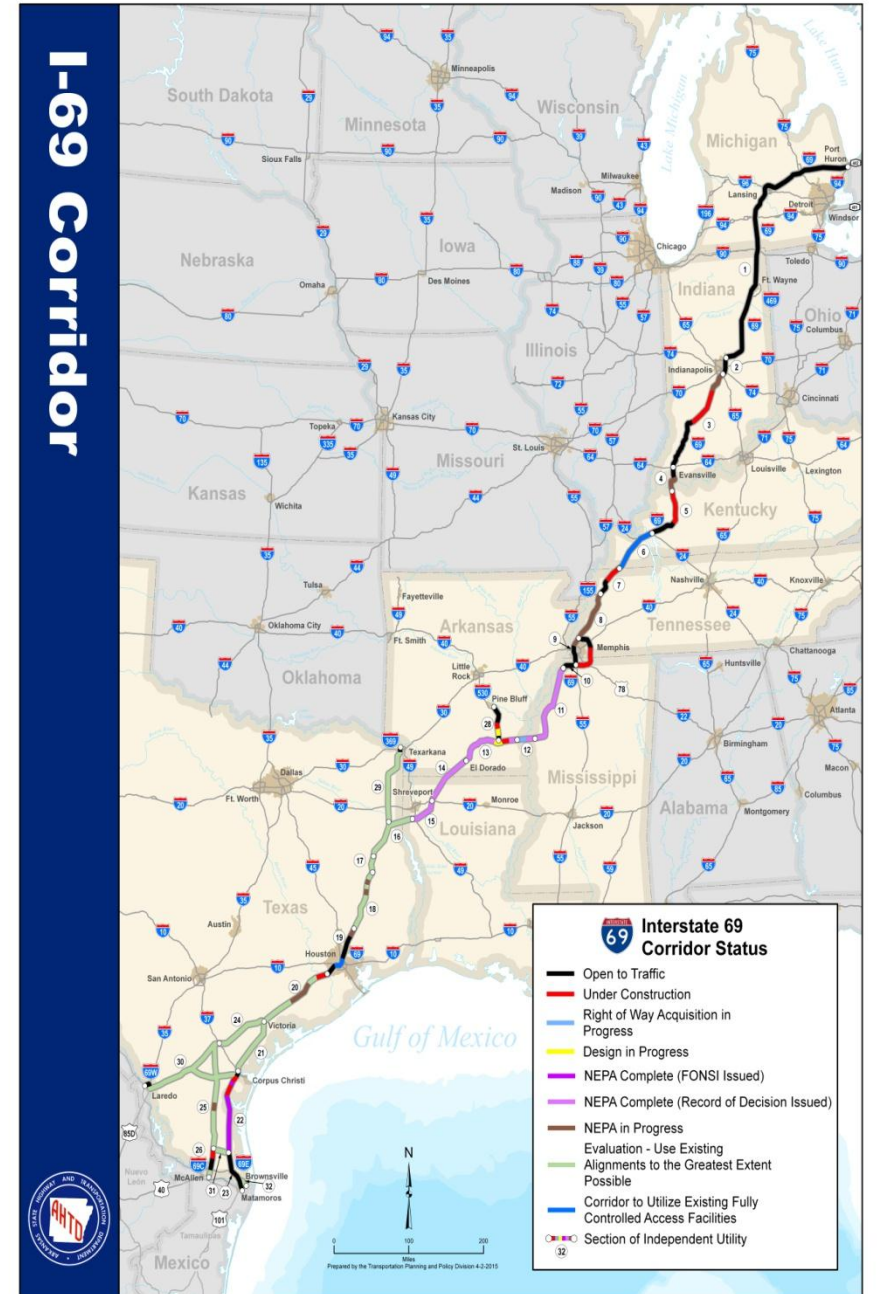
Cross Co. Line-Co. Rd. 375 (Widening) (S)

8.3 miles





- Canada to Mexico
- 2,730 miles
- Estimated Cost to Complete - \$30 Billion
- Congressionally Designated High Priority Corridors 18 & 20
- Includes the I-69 Connector





I-69 Corridor



LEGEND	
	Completed
	Under Construction
	Scheduled
	Programmed
	I-69 Corridor



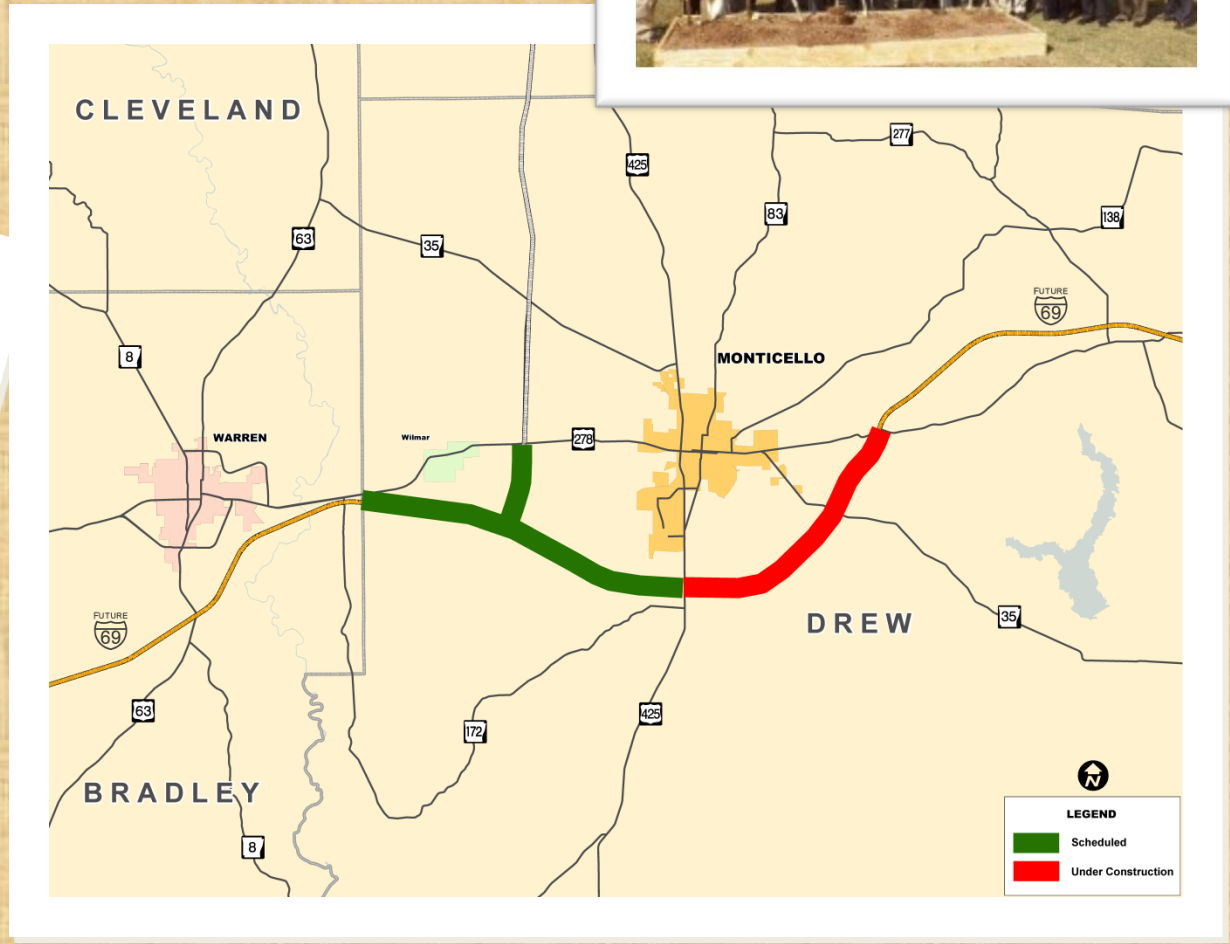


I-69 Connector

Funding Summary



Status	Miles	Total
Complete	22.5	\$140 million
Under Construction	6.5	\$35 million
Scheduled	2.8	\$14 million
Unfunded	10.5	\$520 million
Totals	42.3	\$709 million



Future Interstate 69



Monticello Bypass
Groundbreaking

November 9, 2011
11:00 a.m.

Monticello Bypass

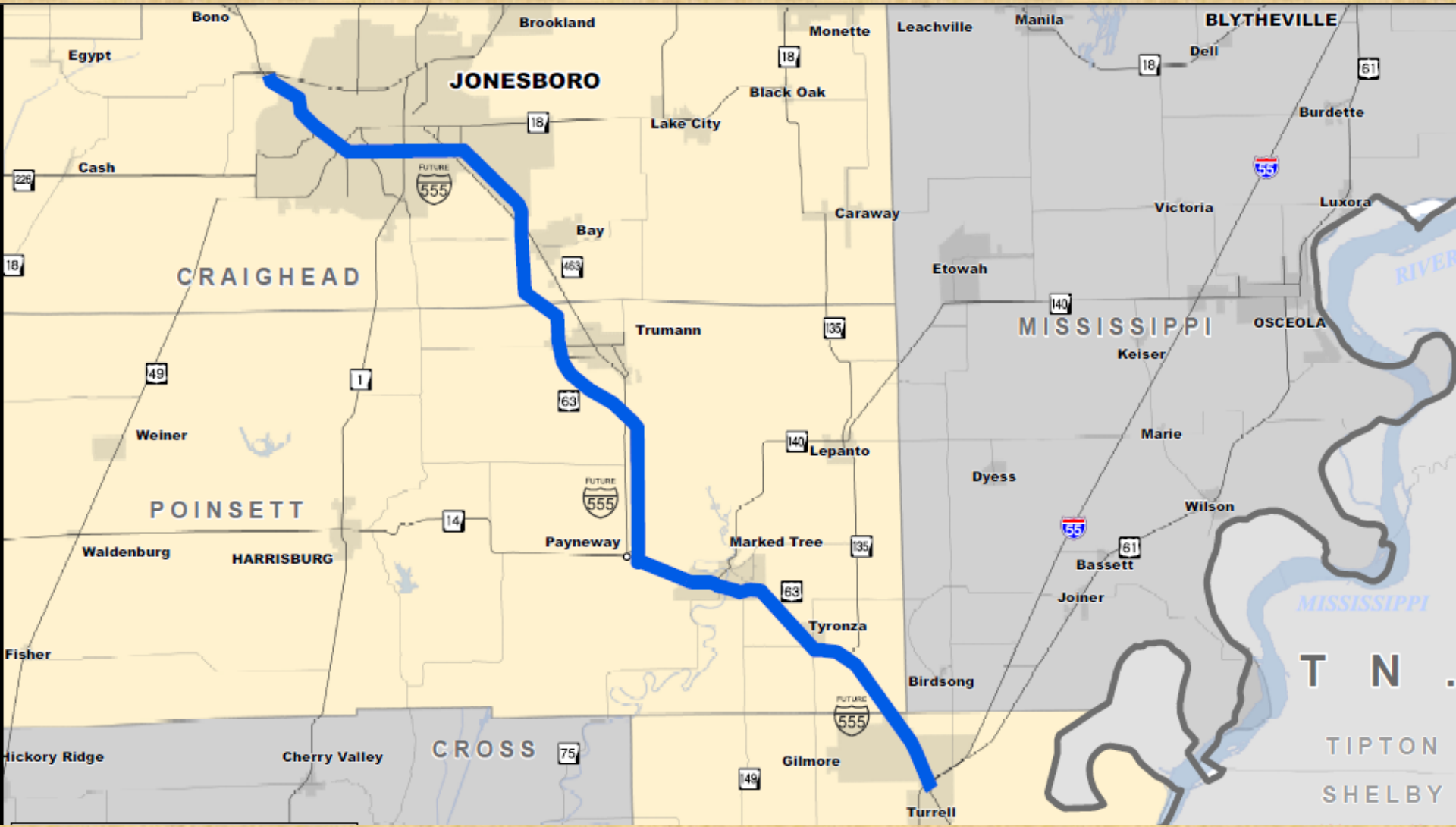
I-69 Great River Bridge

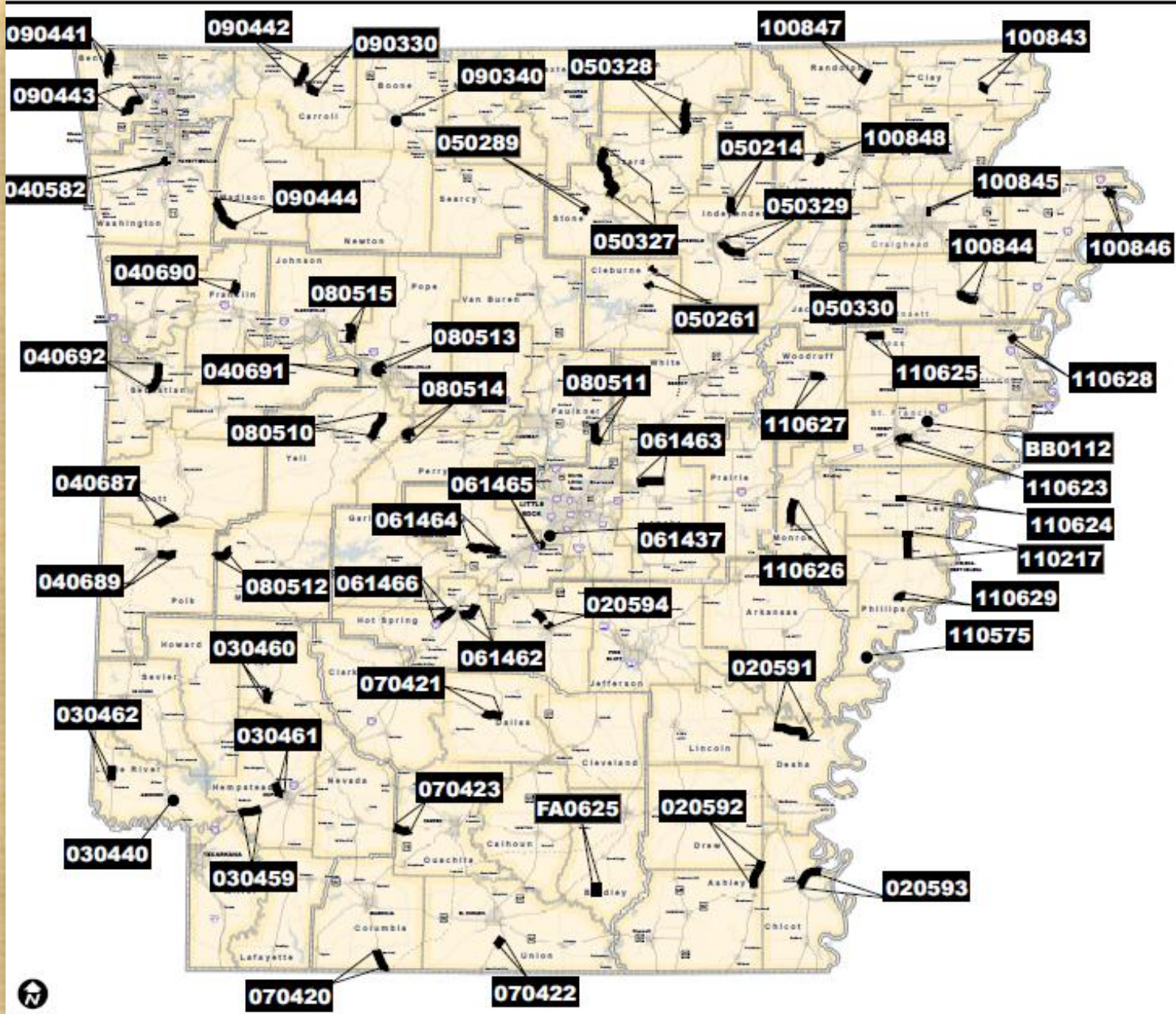


- Design Complete
- Estimated Cost - \$1.3 Billion
 - Arkansas' Portion - \$910 Million
- ROW Acquisition Underway



Future Interstate 555





Projects Removed From 2015 Bid Lettings



March 18, 2015



Impacts to Arkansas

2015

61 Projects Removed
\$162 million



**POTENTIAL
RISK**

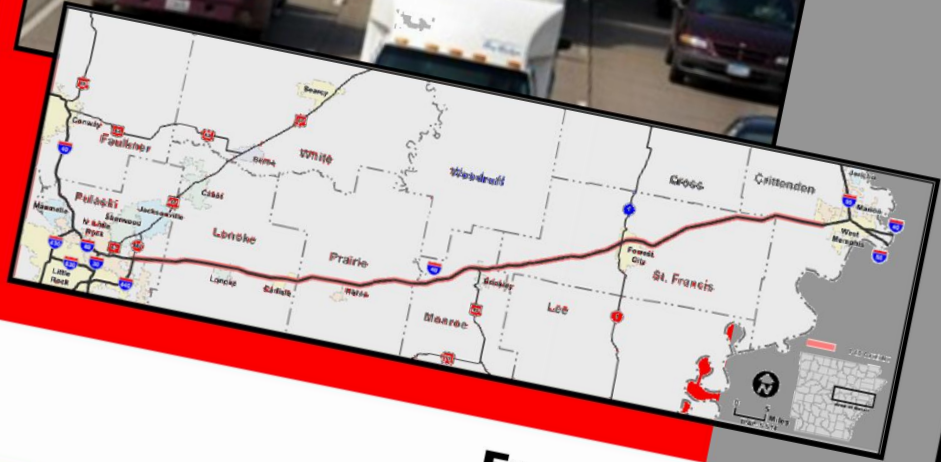
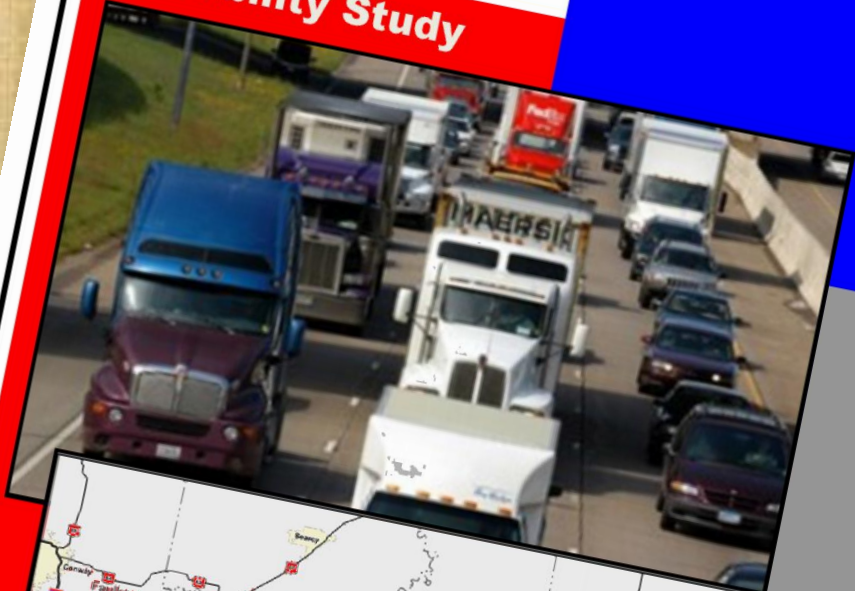
FFY 2015

120 Projects
\$490 Million

FFY 2016

130 Projects
\$520 Million

Interstate 40 Toll Feasibility Study



 **Toll Feasibility Study**

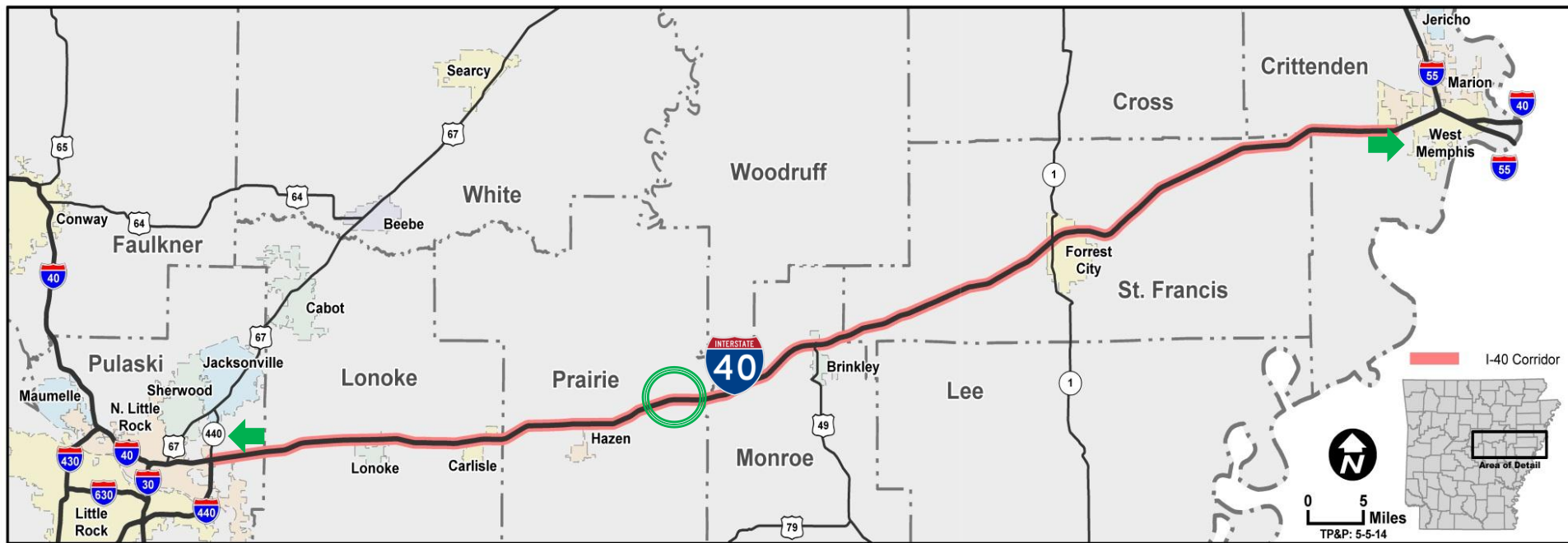
**Executive Summary
May 2014**

Project Goals



- Determine feasibility of using tolls to finance the widening of Interstate 40 from four to six lanes between North Little Rock and West Memphis, a distance of 110 miles.

Most Feasible Concept and Collection System



- Toll All Lanes with Three Collection Points
- Open Road Tolling (Transponder, Video and Cash)
- All Electronic Tolling (Transponder and Video)
- Toll Rate: Passenger Vehicles– 9 cents per mile
Trucks – 27 cents per mile

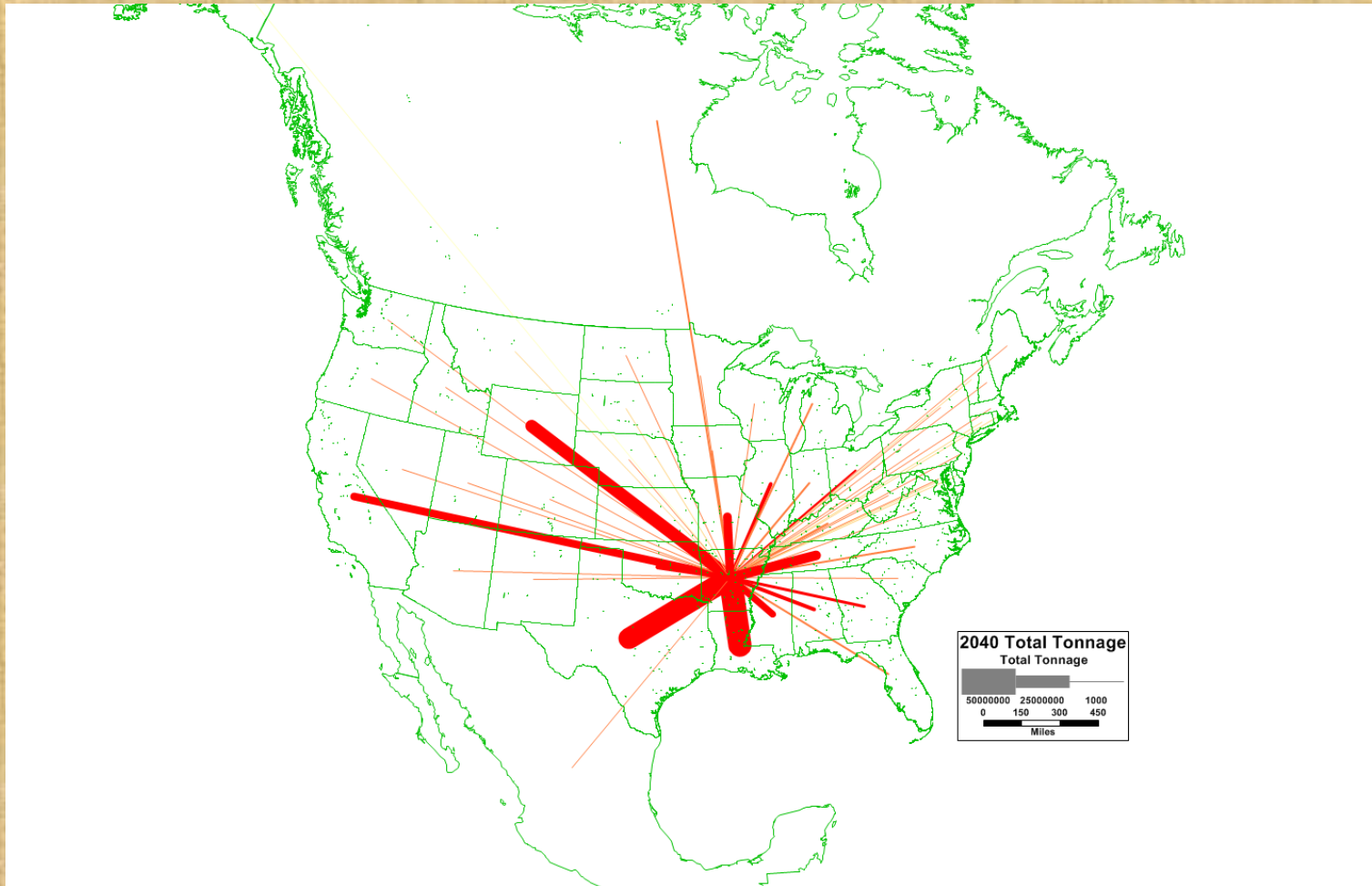
Summary

“The critical element to make this viable is that all lanes must be tolled including the existing lanes”

- Develop support for the project
- Remove the prohibition on video data collection along the toll road
- Support future federal transportation legislation to remove the prohibition on Interstate tolling
- Add additional opportunities to toll existing Interstates or gain access to the existing pilot project slots
- Investment grade study (additional and more detailed financial analyses)

Freight Result

Tonnage to/from Arkansas





@AHTD

Litter Hotline 866-811-1222



Bi-State Coordination

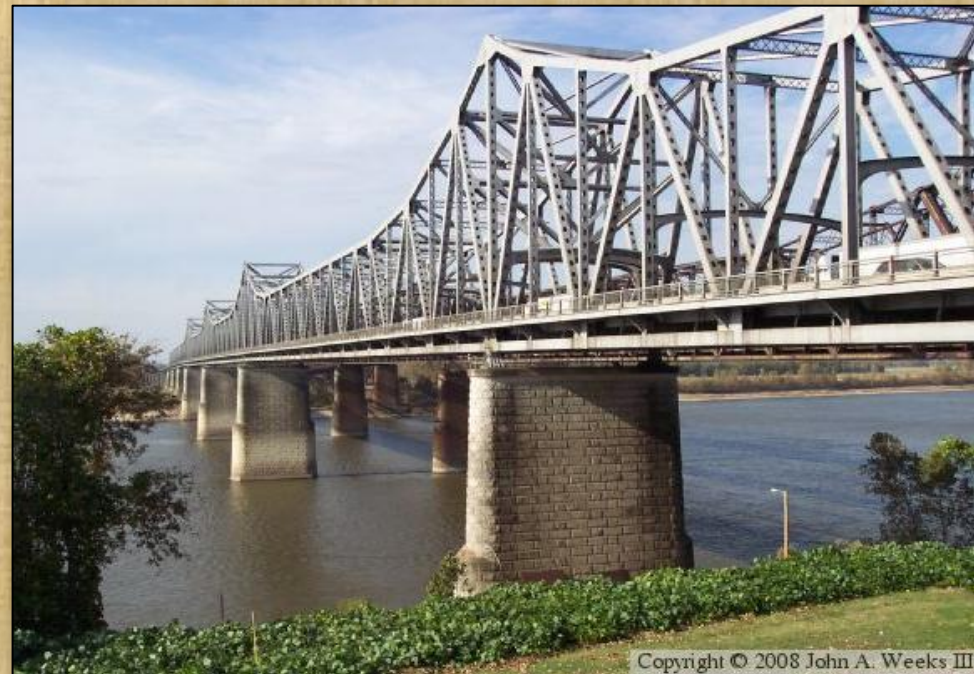
Interstate 55 – Crump Blvd. Interchange



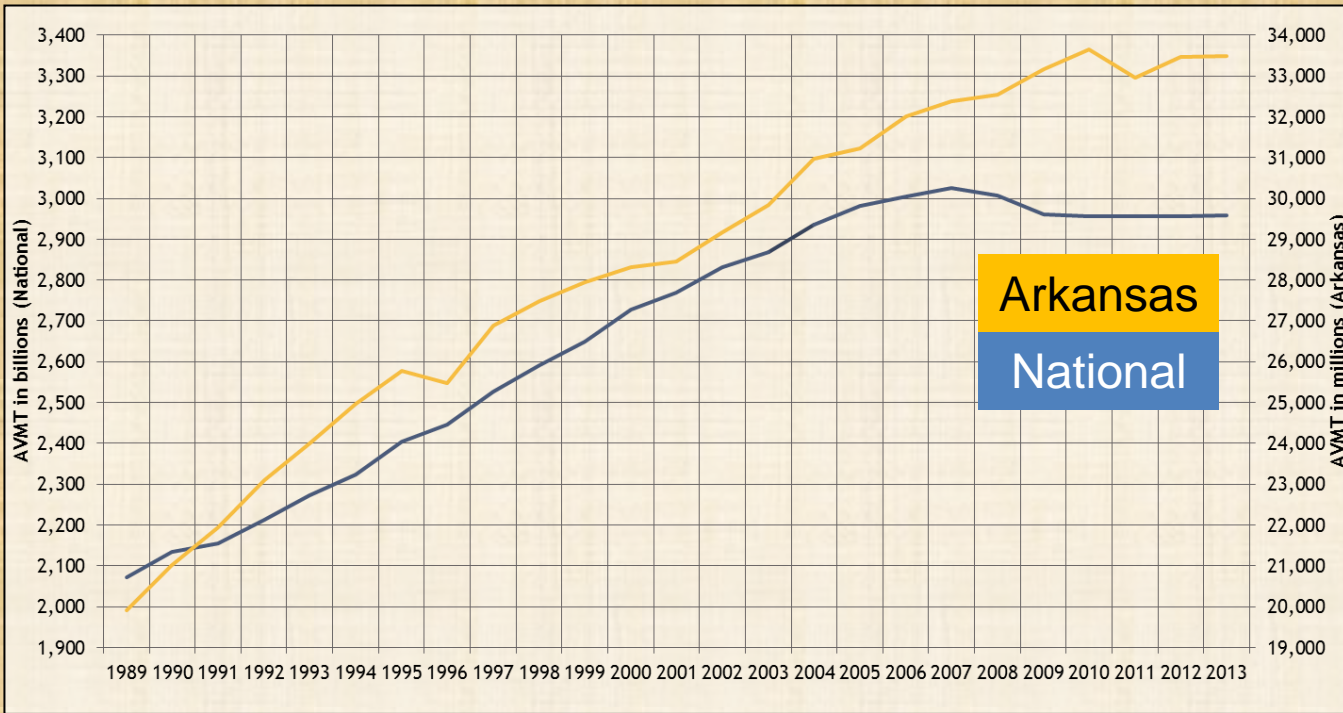
Bi-State Coordination

Interstate 55 – Crump Blvd. Interchange

- 73,000 vehicles each day across both bridges.
- Issues associate with Interstate 55 bridge closure
 - Road User Costs
 - Driver expectations
 - Emergency Access / System Redundancy
 - Regional Economic Impact
 - Timing



Travel Miles

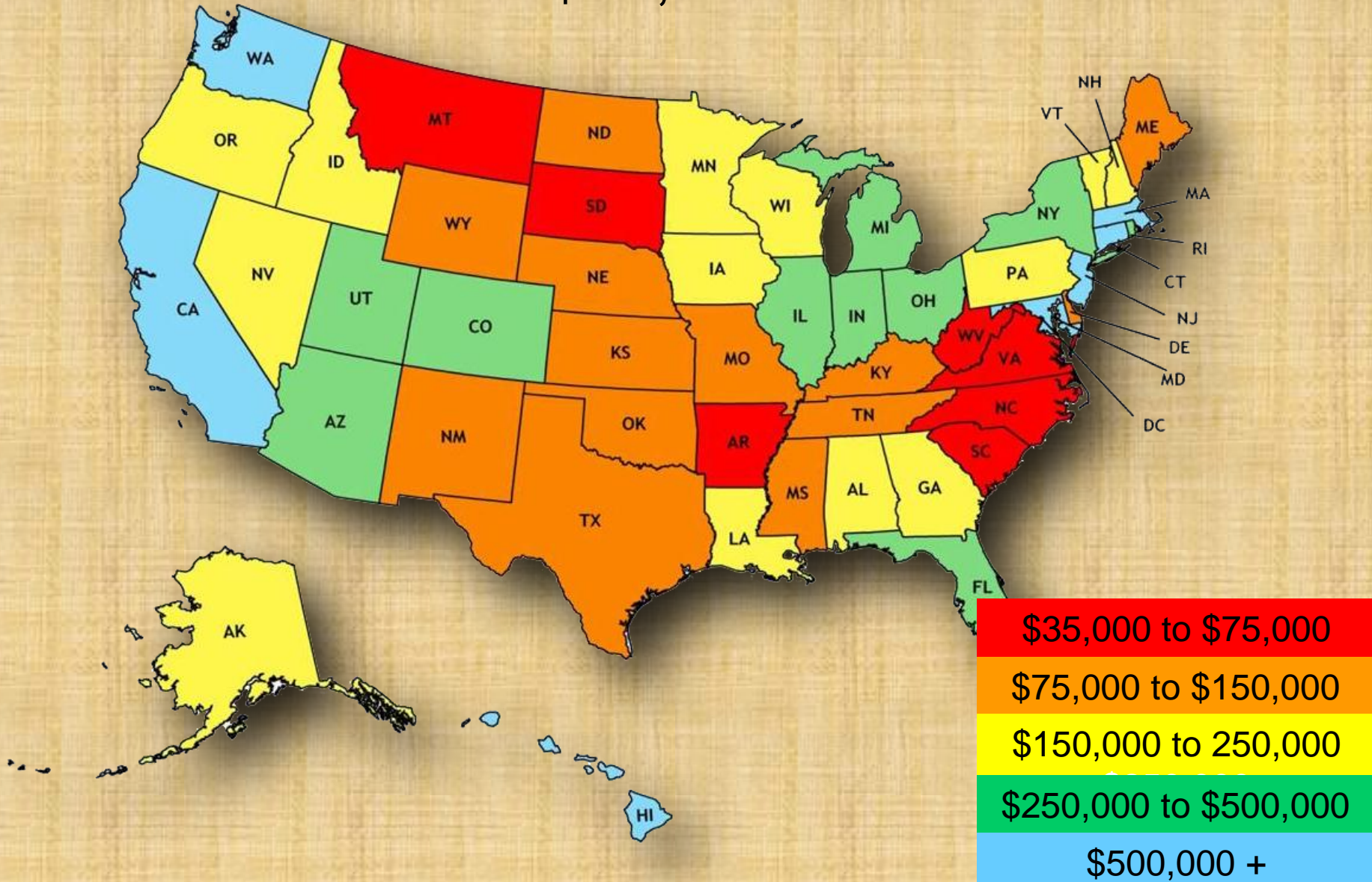


Public Roadway Mileage: 101,656 miles
Arkansas Highway System: 16,411 miles

State Highway Systems

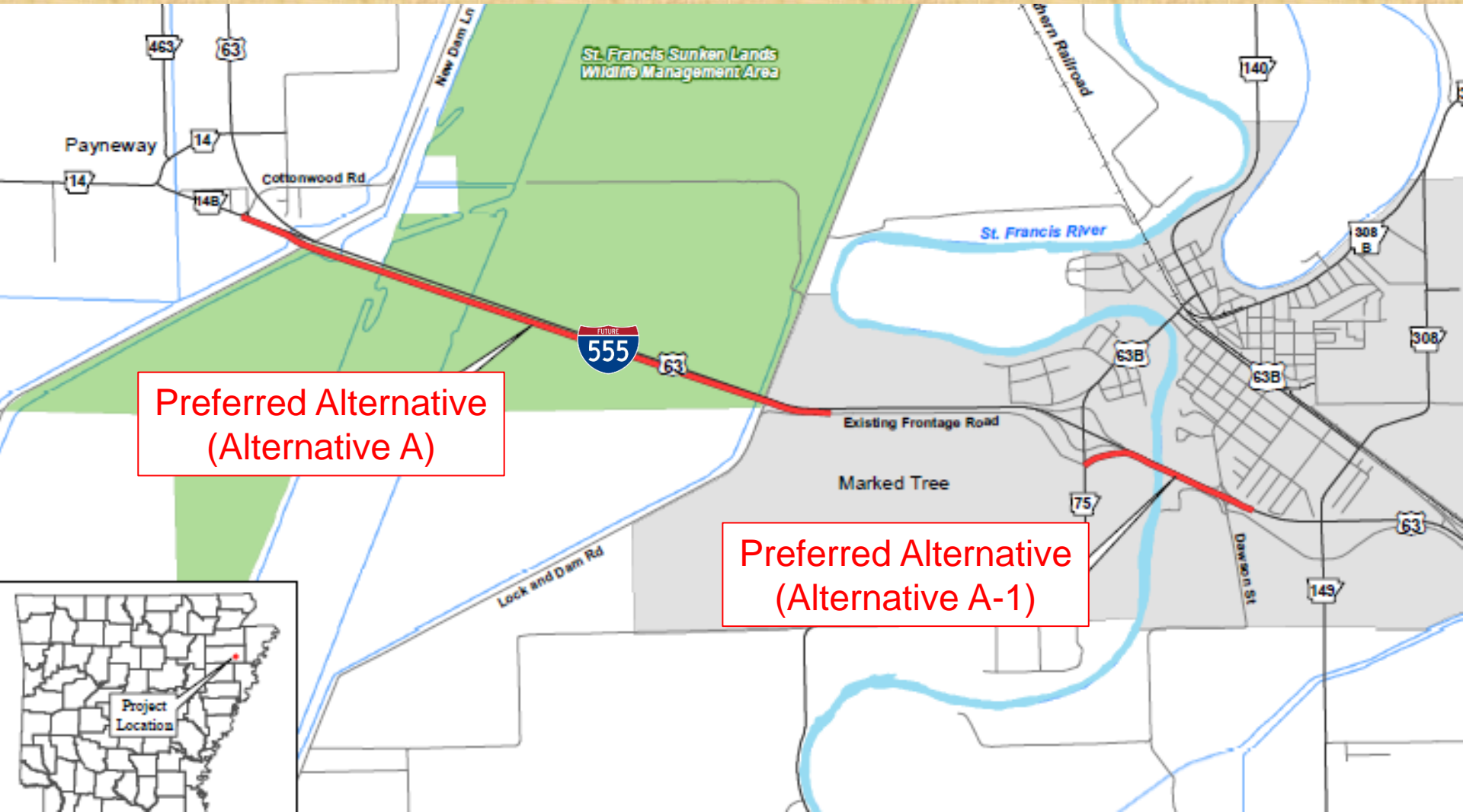
State	Mileage
Arkansas	16,416
Illinois	16,161
California	15,225
New York	15,033
Tennessee	13,793
Florida	12,084

Arkansas ranks 44th in revenue per mile \$71,494





Frontage Road Construction



Preferred Alternative
(Alternative A)

Preferred Alternative
(Alternative A-1)