

Arkansas State Highway and Transportation Department

Eureka Springs Rotary Club
November 5, 2015



Steve Lawrence
District Engineer
District 9

Mitchell Archer
Construction Engineer
District 9

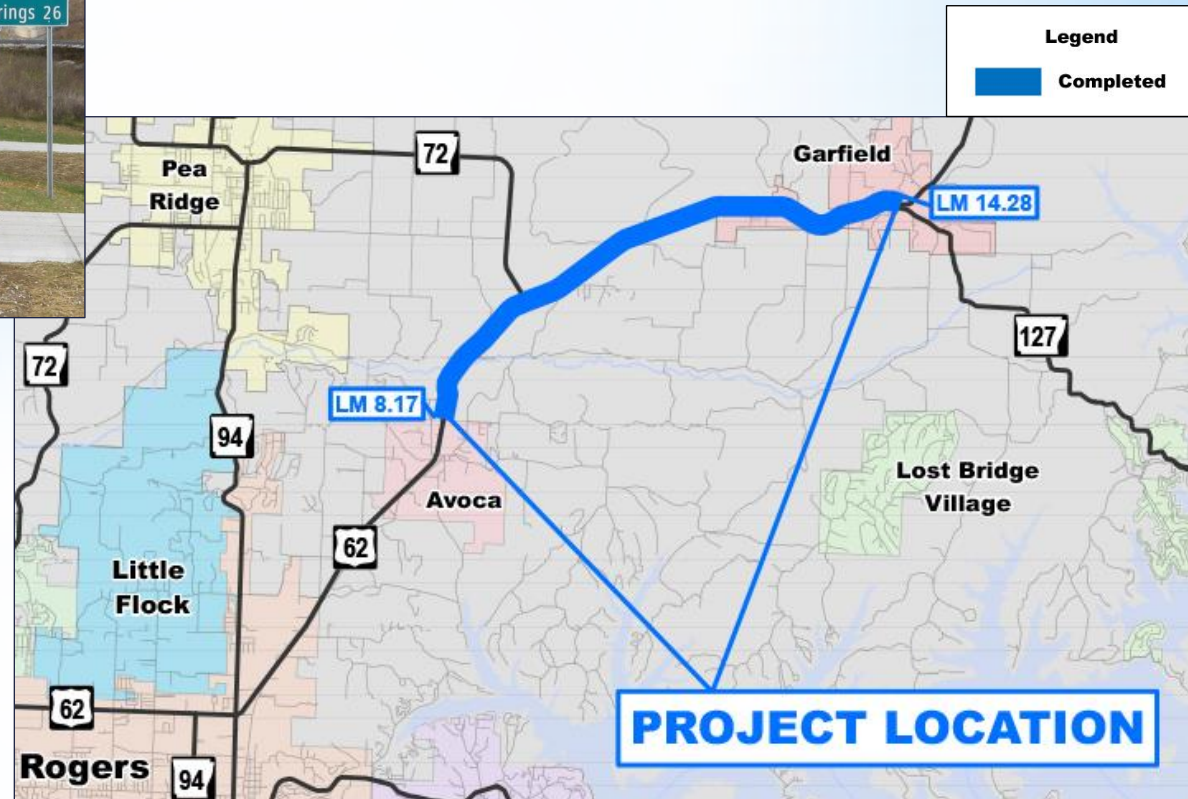


Completed Projects in and around Carroll County



Avoca-North Garfield

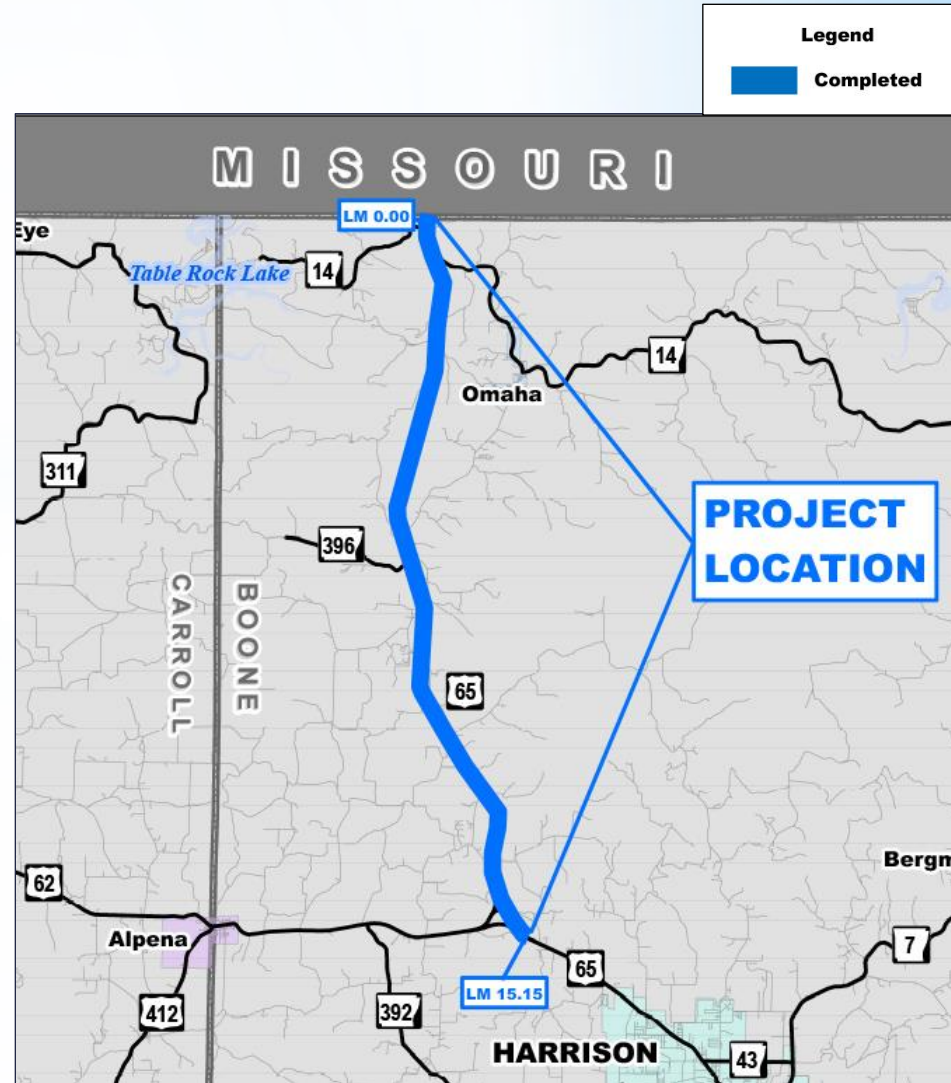
- \$23.4 million
- 6.1 miles – widened to five lanes
- Estimated completion in late 2015





Cable Median Barrier

- \$2.4 million
- 14.3 miles of wire rope safety fence installed
- Estimated completion in late 2015

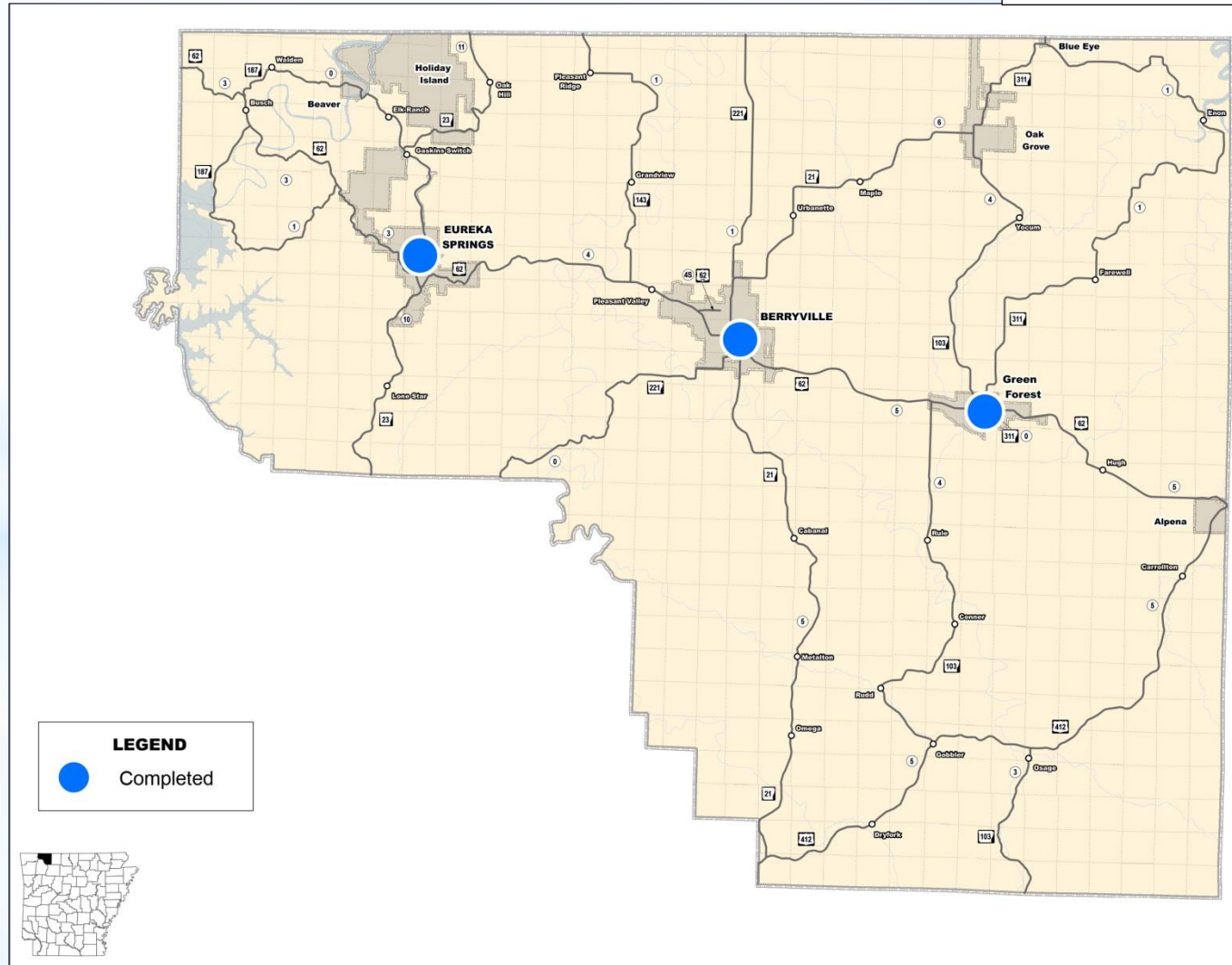


City Aid Jobs

Legend

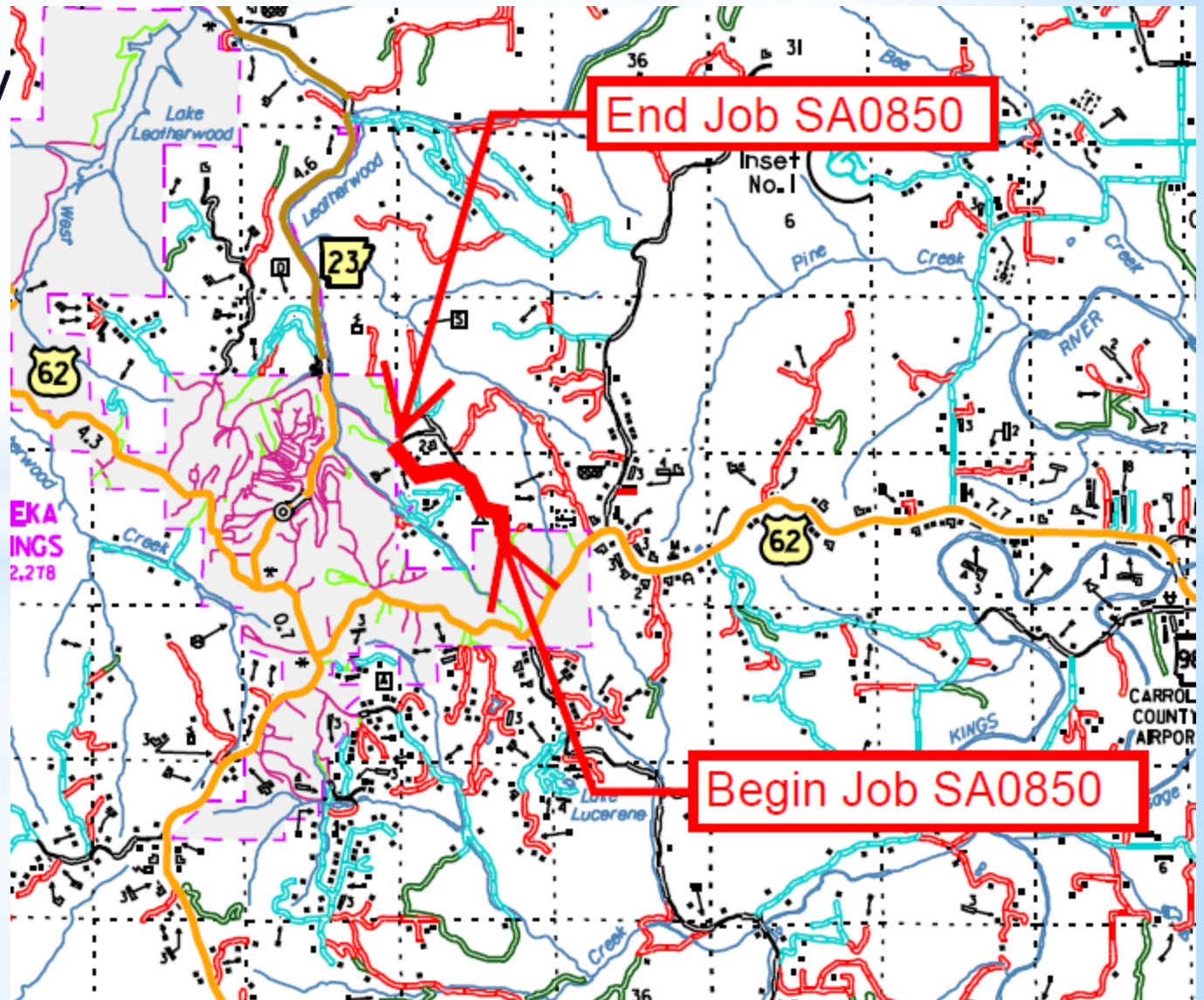
Completed

- \$644,002
 - Eureka Springs \$181,717
 - Green Forest \$184,983
 - Berryville \$277,302
- 3.71 miles of overlay
 - Eureka Springs 1.31
 - Green Forest 0.82
 - Berryville 1.58



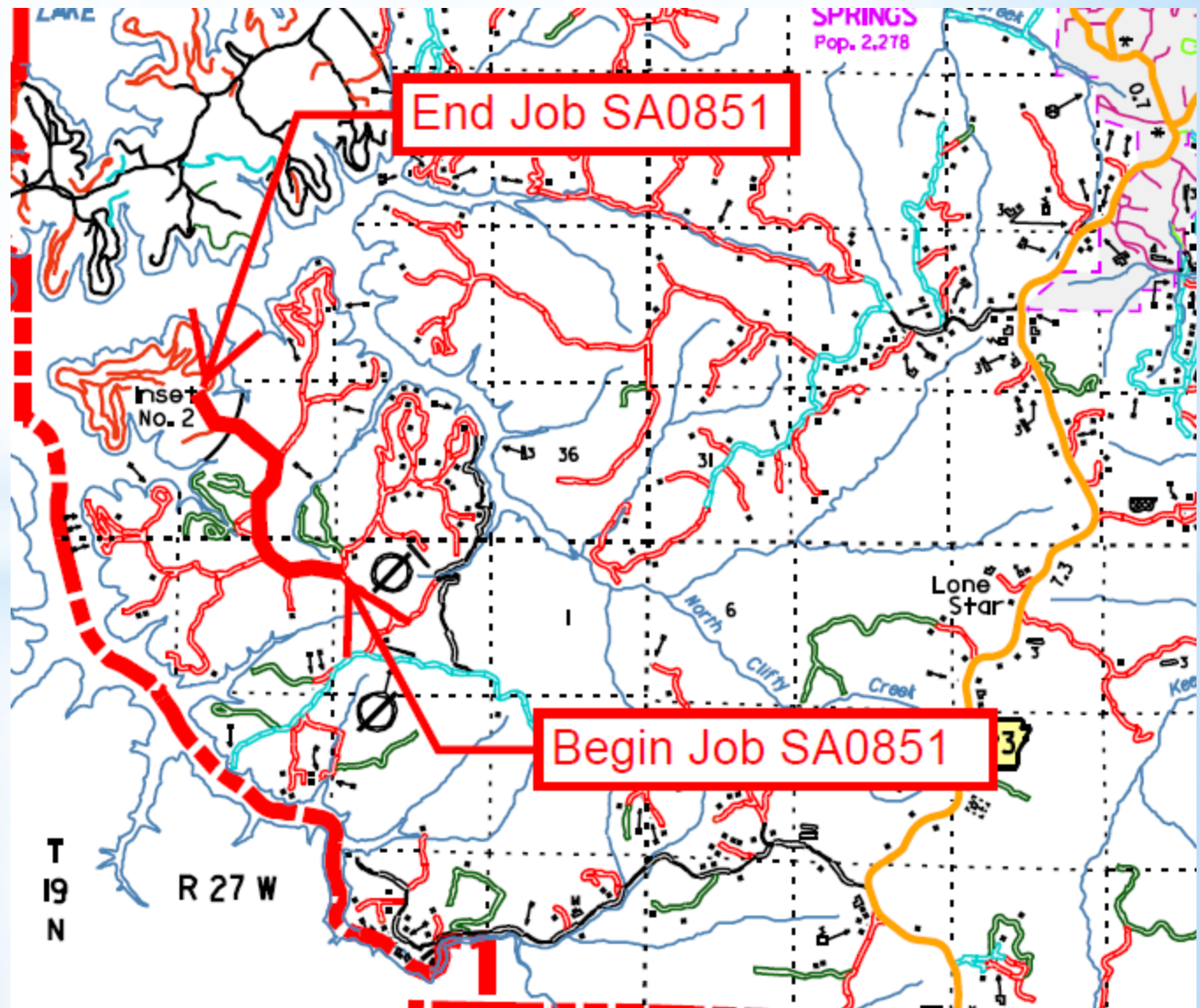
State Aid Jobs

- Job SA0850
 - Hot Mix Overlay
 - 1.05 Miles
 - \$200,476.60



State Aid Jobs

- Job SA0851
 - Chip and Seal
 - 2.00 Miles
 - \$148,973.80



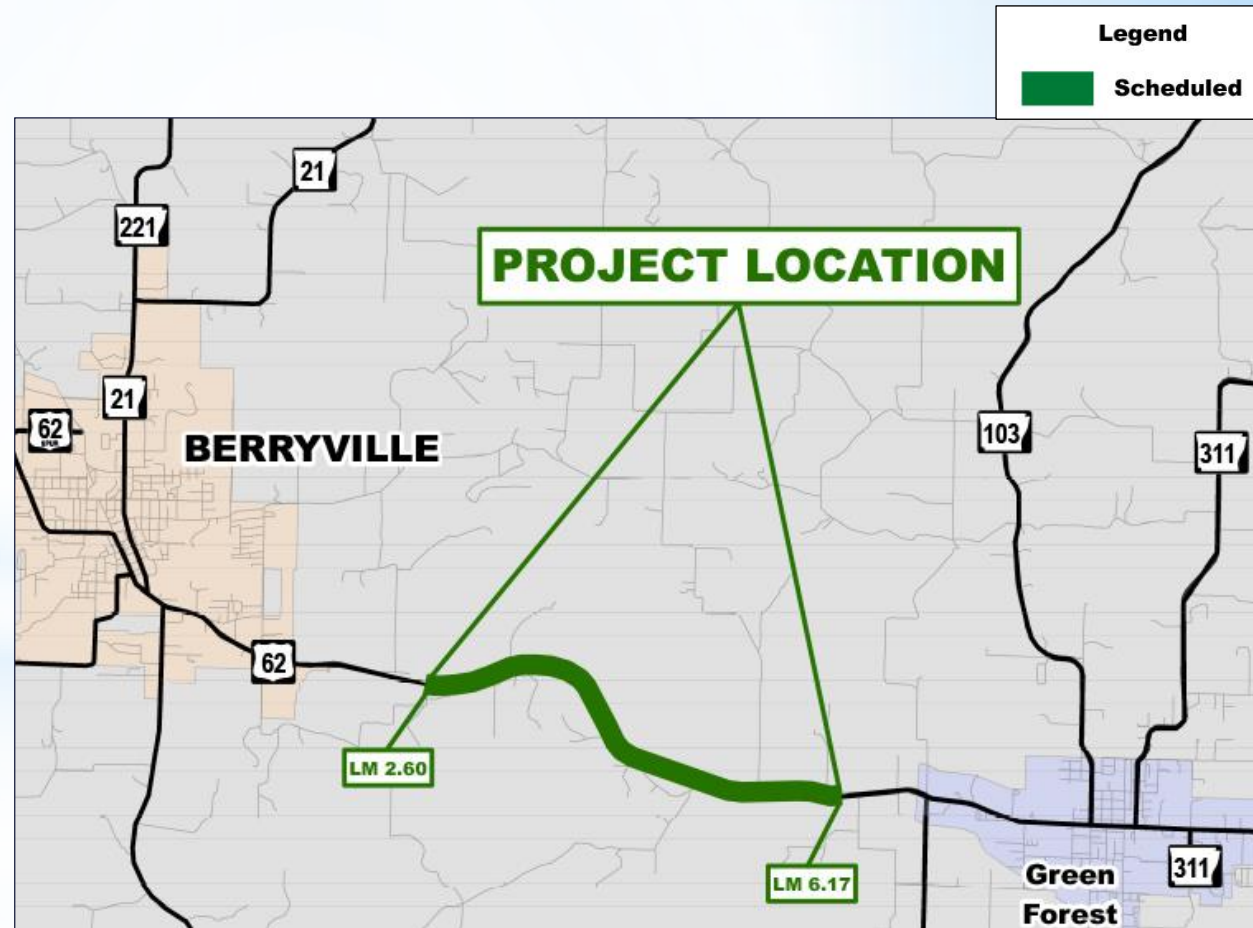


Projects Planned for Carroll County



Highway 62

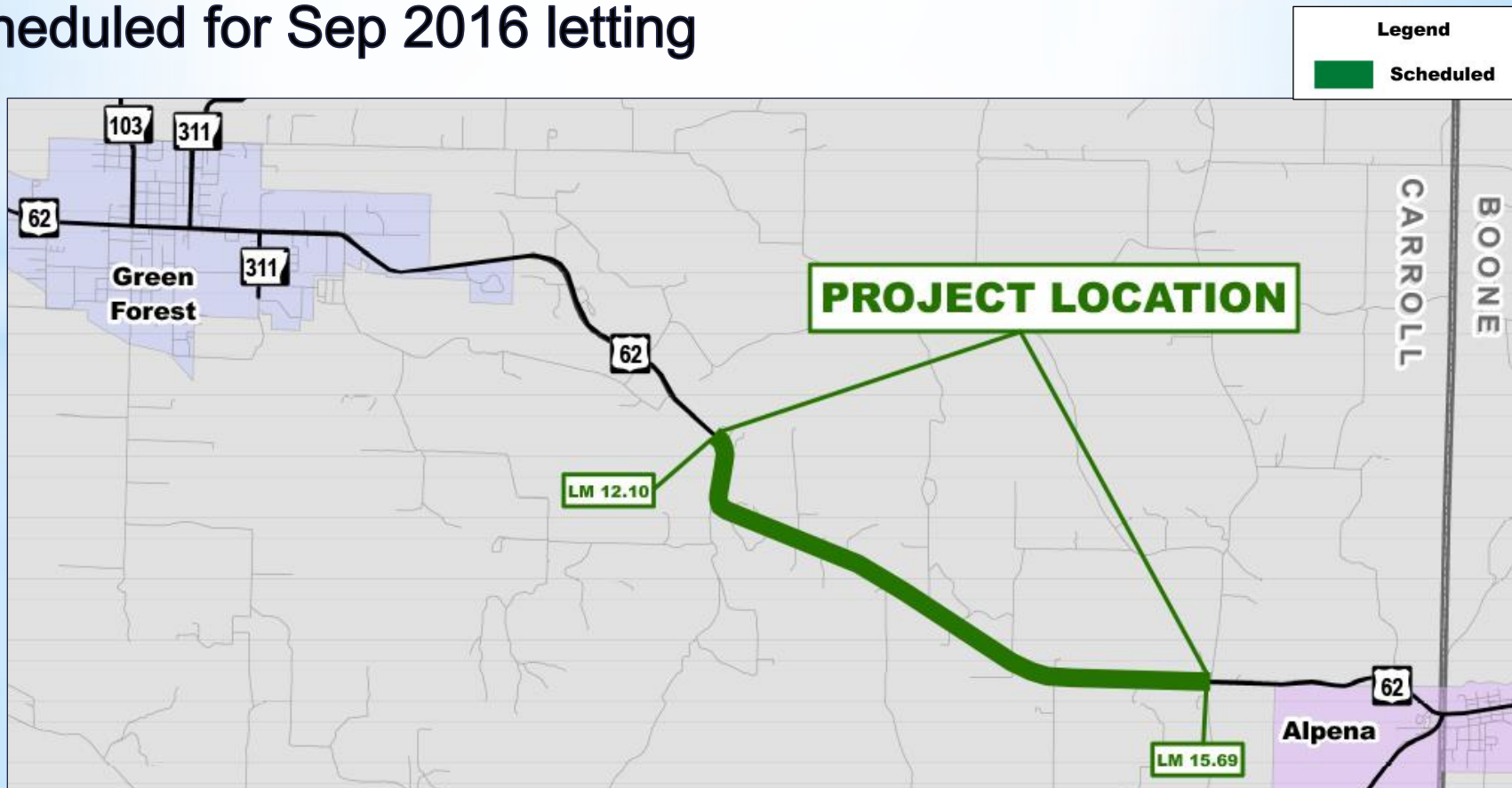
- From County Road 704 to West of Highway 103 South
- 3.57 miles – widened to five lanes
- Scheduled for Dec 2015 letting





Highway 62

- From County Road 914 West
- 3.59 miles – widened to five lanes
- Scheduled for Sep 2016 letting



Other Construction Planned in Carroll County



Replace a bridge over
Freeman Branch with a box
culvert

9/2016



Safety Improvements
between Hwy 12 and Hwy 62



Passing lanes between Hwy
187 & Eureka Springs



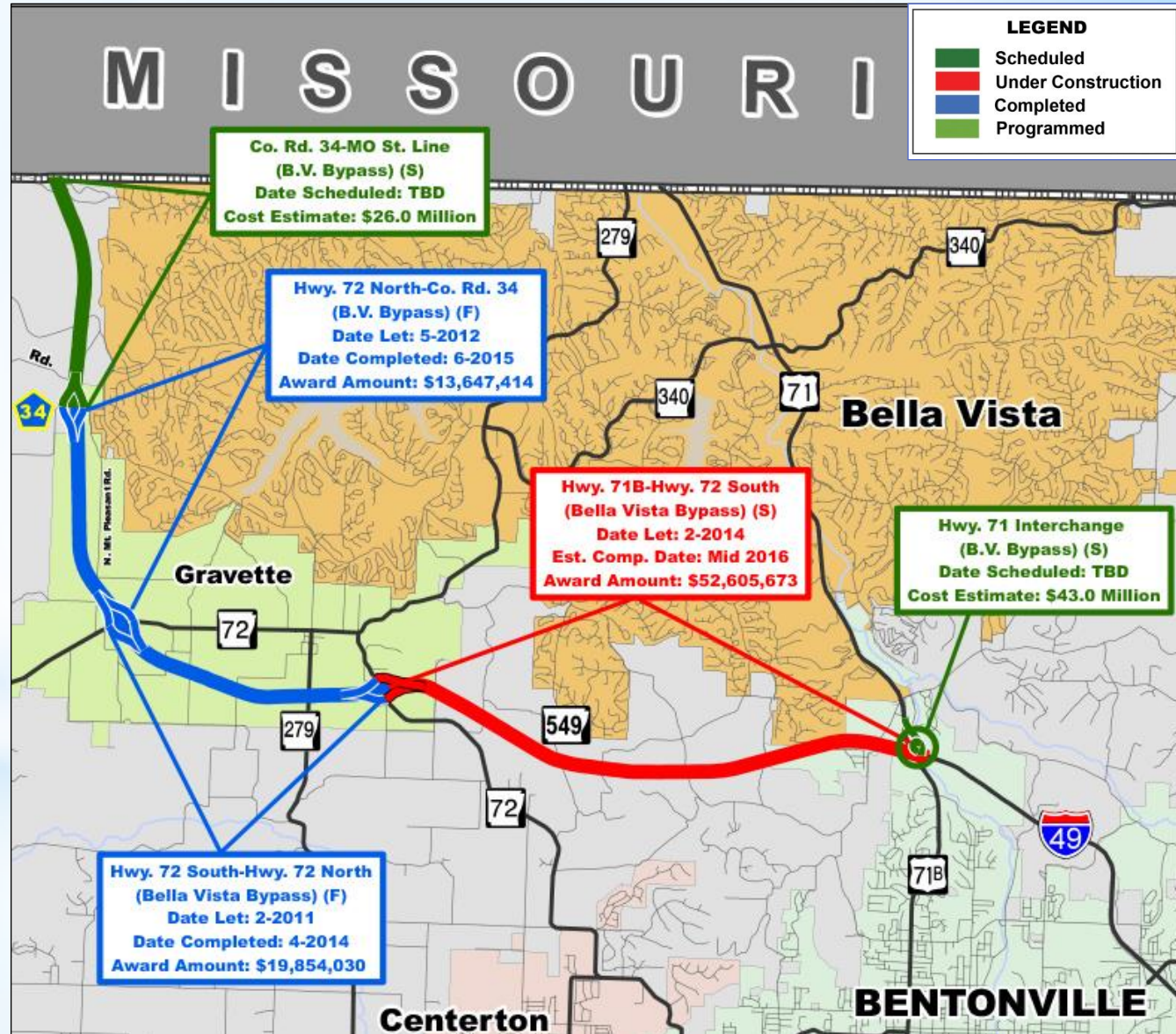
Big Projects in the Northwest



Bella Vista Bypass

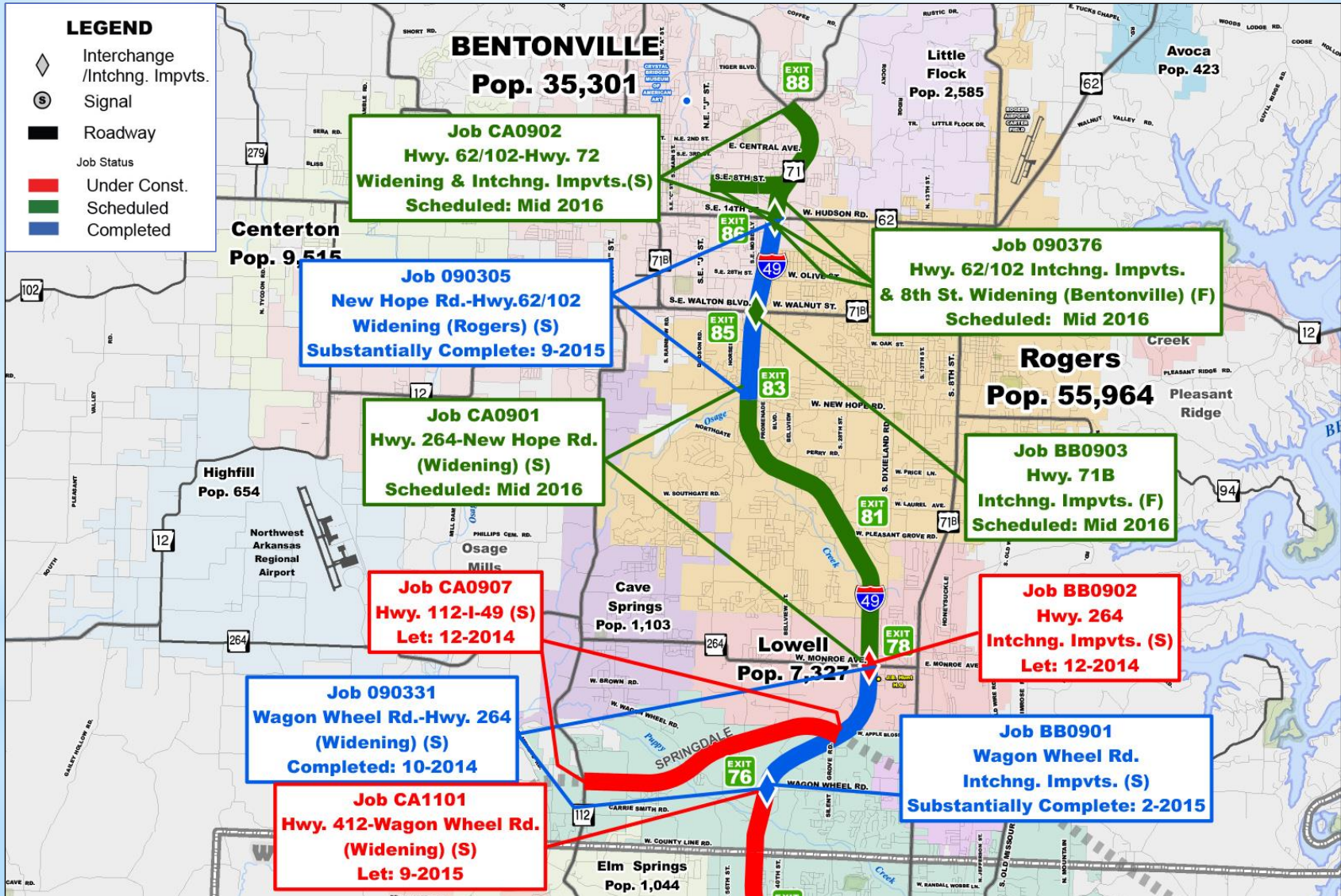


- 5.4 miles completed
- 6.4 miles under construction
- 2.5 miles scheduled



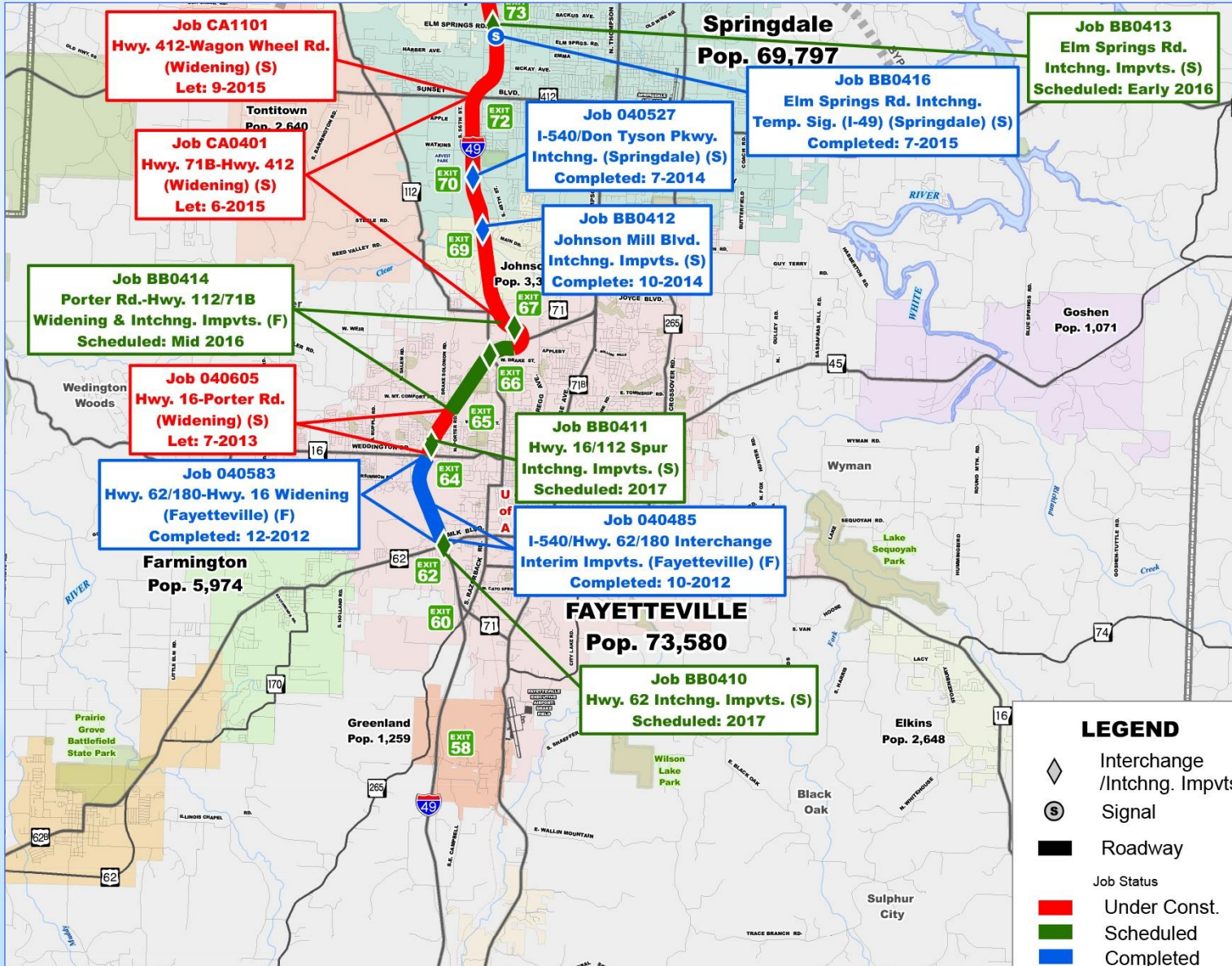


Interstate 49 Corridor





Interstate 49 Corridor





Springdale Bypass



- Began 2/2015
- Est. Complete Mid-2019
- \$100.6 million





Highway Revenue Distribution

70/15/15 Formula

- ✓ 70% Arkansas Highway & Transportation Dept
- ✓ 15% Arkansas Counties
- ✓ 15% Arkansas Cities



\$700 million for Local Improvements

- ✓ \$350 million for *county roads*
- ✓ \$350 million for *city streets*

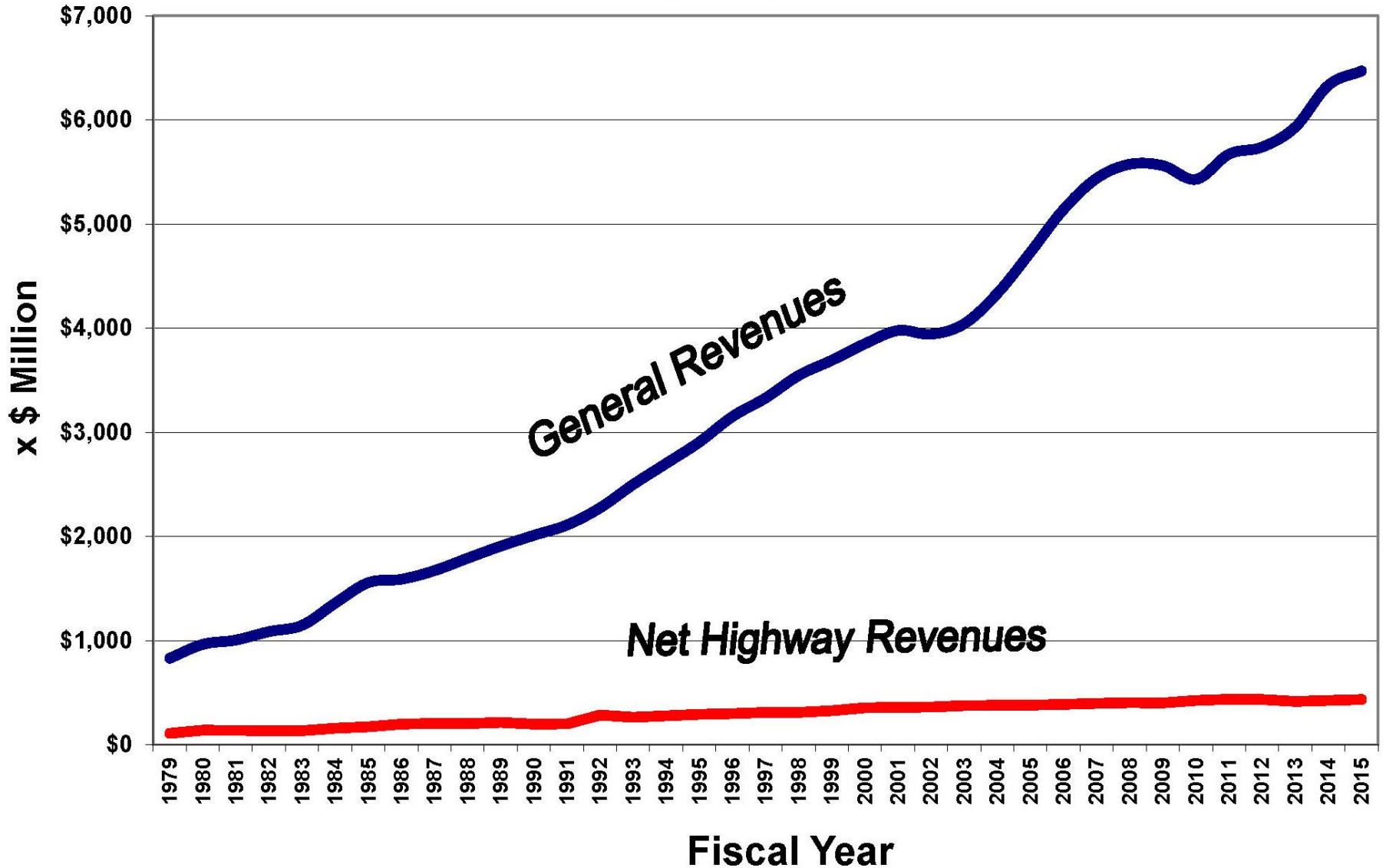


Turnback Funds Carroll County

County/Cities	Ten Year Cumulative
Carroll Co.	\$4,535,983
Berryville	\$1,071,029
Beaver	\$19,997
Blue Eye	\$5,999
Eureka Springs	\$414,534
Green Forest	\$552,112
Oak Grove	\$73,788



Arkansas State General Revenues vs AHTD Net Highway Revenues





Fuel Tax Stagnant

Federal

Year	Increase	Gasoline	Diesel
1993	4 cents	18.4	24.4

State

Year	Increase	Gasoline	Diesel
1999	3 & 4 cents	21.8	22.8

Loss of Purchasing Power

Item	Description	1993	2010	Variance
Tuition	Tuition/Fees	\$3,517	\$9,136	160%
Gas	Per Gallon	\$1.12	\$2.73	144%
Movie	Avg. Ticket	\$4.14	\$7.89	91%
House	Median Price	\$126,500	\$221,800	75%
Bread	Per Pound	\$1.08	\$1.76	62%
Income	Avg. Household	\$31,272	\$49.167	57%
Stamp	1 st Class	.29¢	.44¢	52%
Beef	Per Pound	\$1.57	\$2.28	46%
Car	Avg. New Car	\$19,200	\$26,850	40%
Consumer Price Index	Avg. Purchases	144.48	218.08	51%
Construction	Const. Cost Index	99.50	237.60	139%
Fed Gas Tax	Per Gallon	0.184	0.184	0%

Current Highway Funding Sources

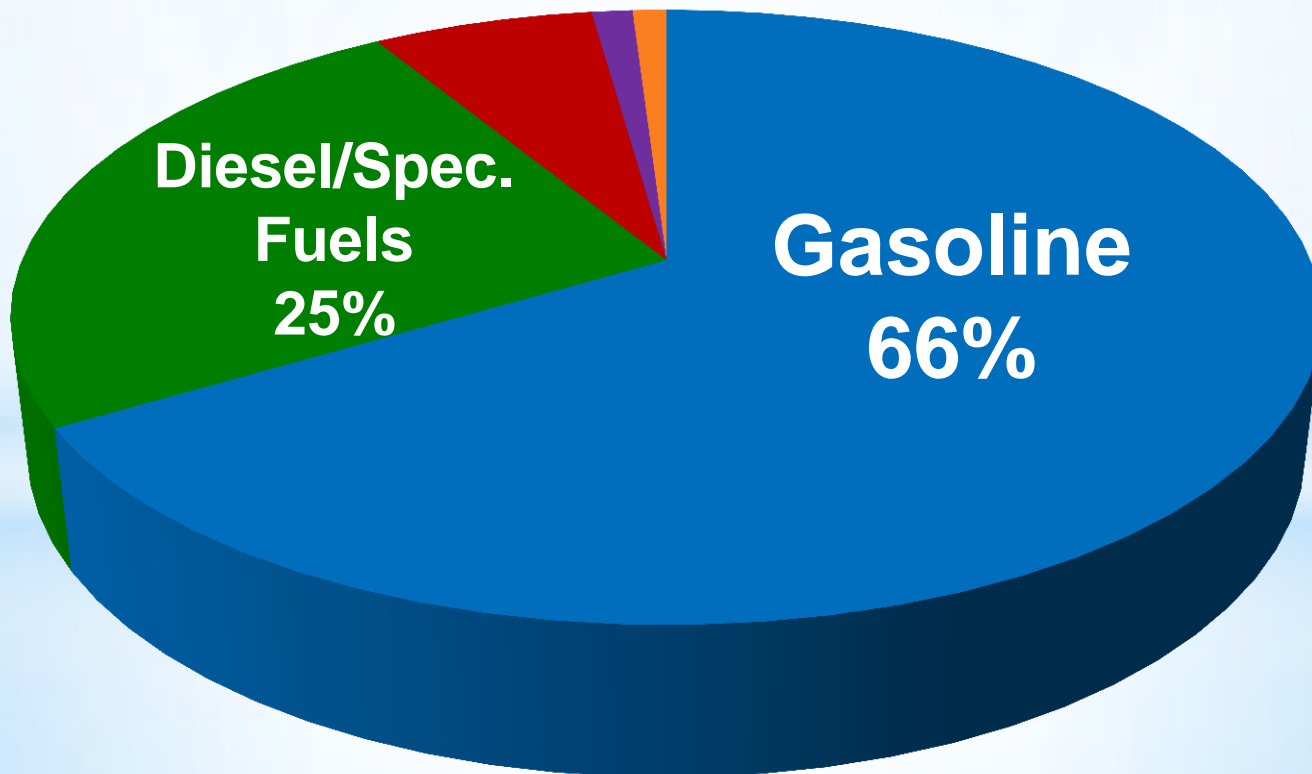
Federal

Per-Gallon Motor Fuel Tax – 91%

Truck/Bus/Trailer 7%

Tires 1.0%

Heavy Vehicle Tax 0.1%



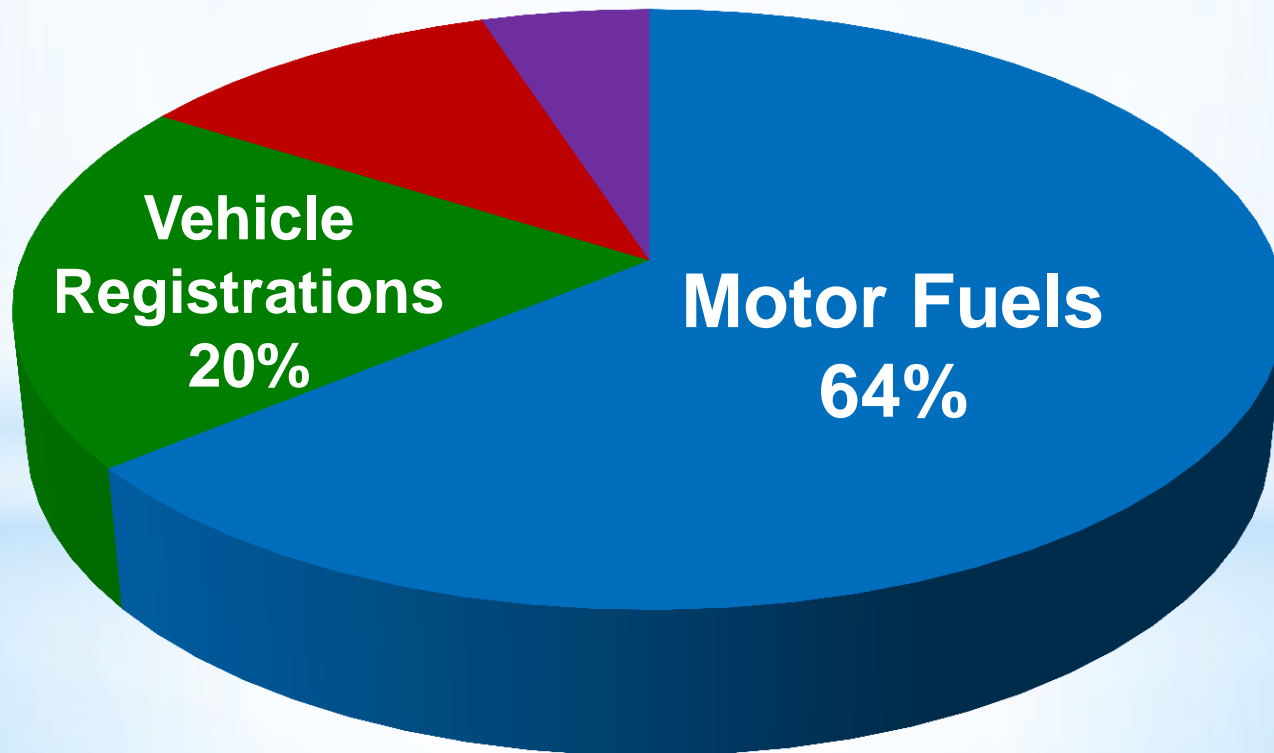
Current Highway Funding Sources

State

Per-Gallon Motor Fuel Tax – 64%

Severance 11.0%

License/Permits/Fees/Other 5.0%



Legislation

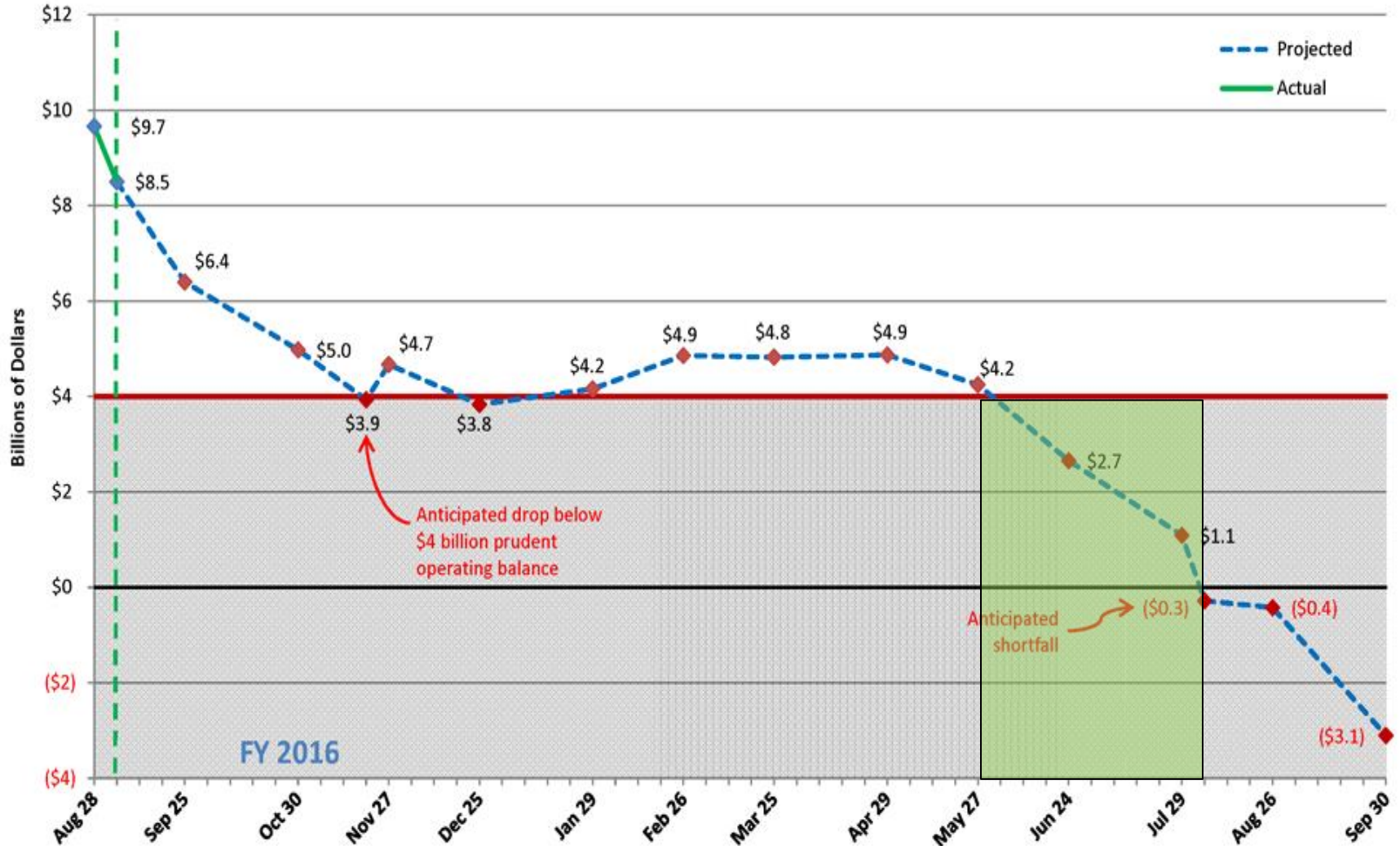
- ✓ MAP-21 Extension Expires November 20, 2015
- ✓ Senate version passed July 30, 2015
- ✓ House version currently being amended and debated



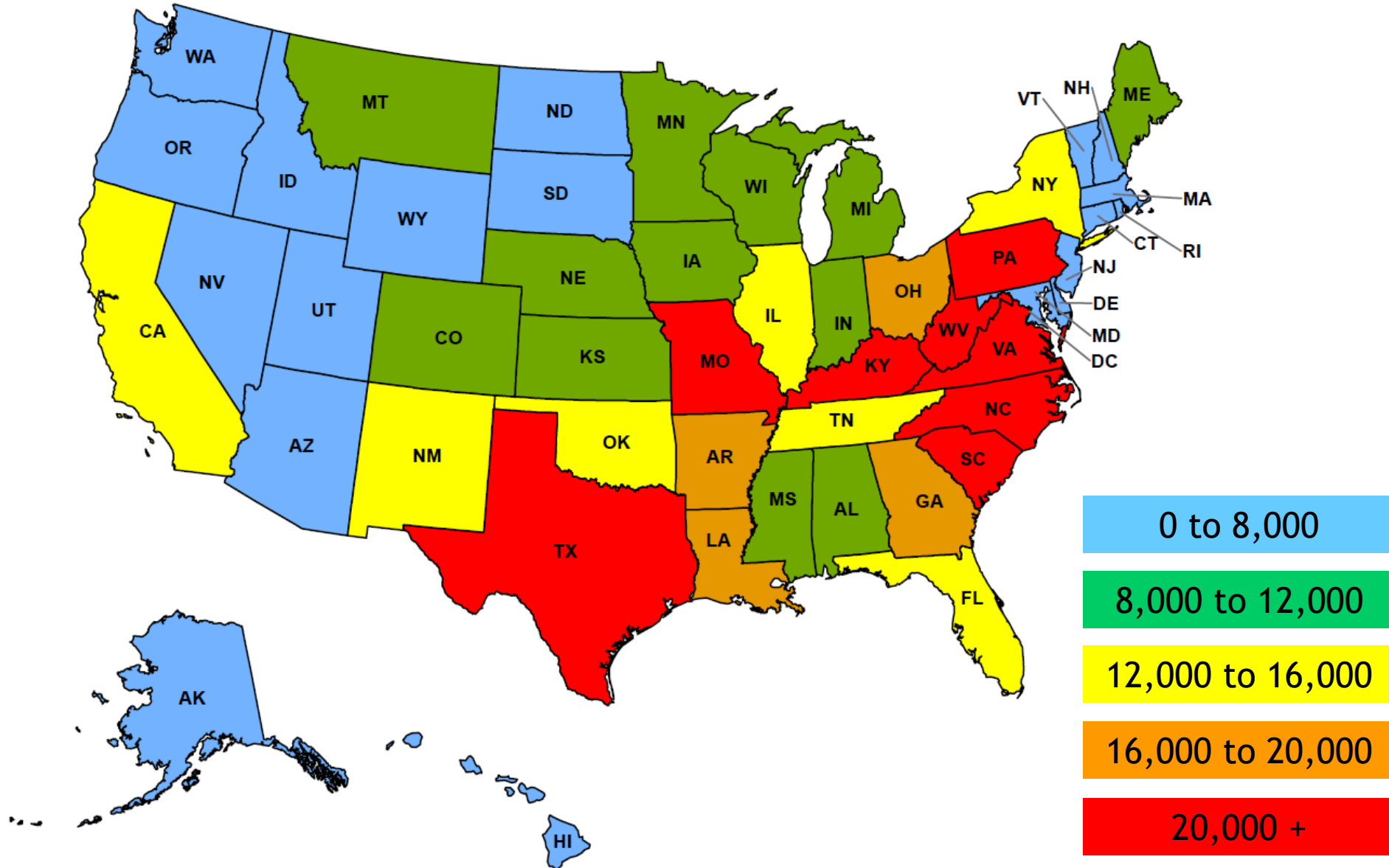
Highway Trust Fund

FY 2015 & FY 2016 Projected Estimates for End-of-Month Cash Balances (as of 9/4/15) ^{1/ 2/ 3/ 4/}

Highway Account of the Highway Trust Fund (Includes FHWA, FMCSA & NHTSA)

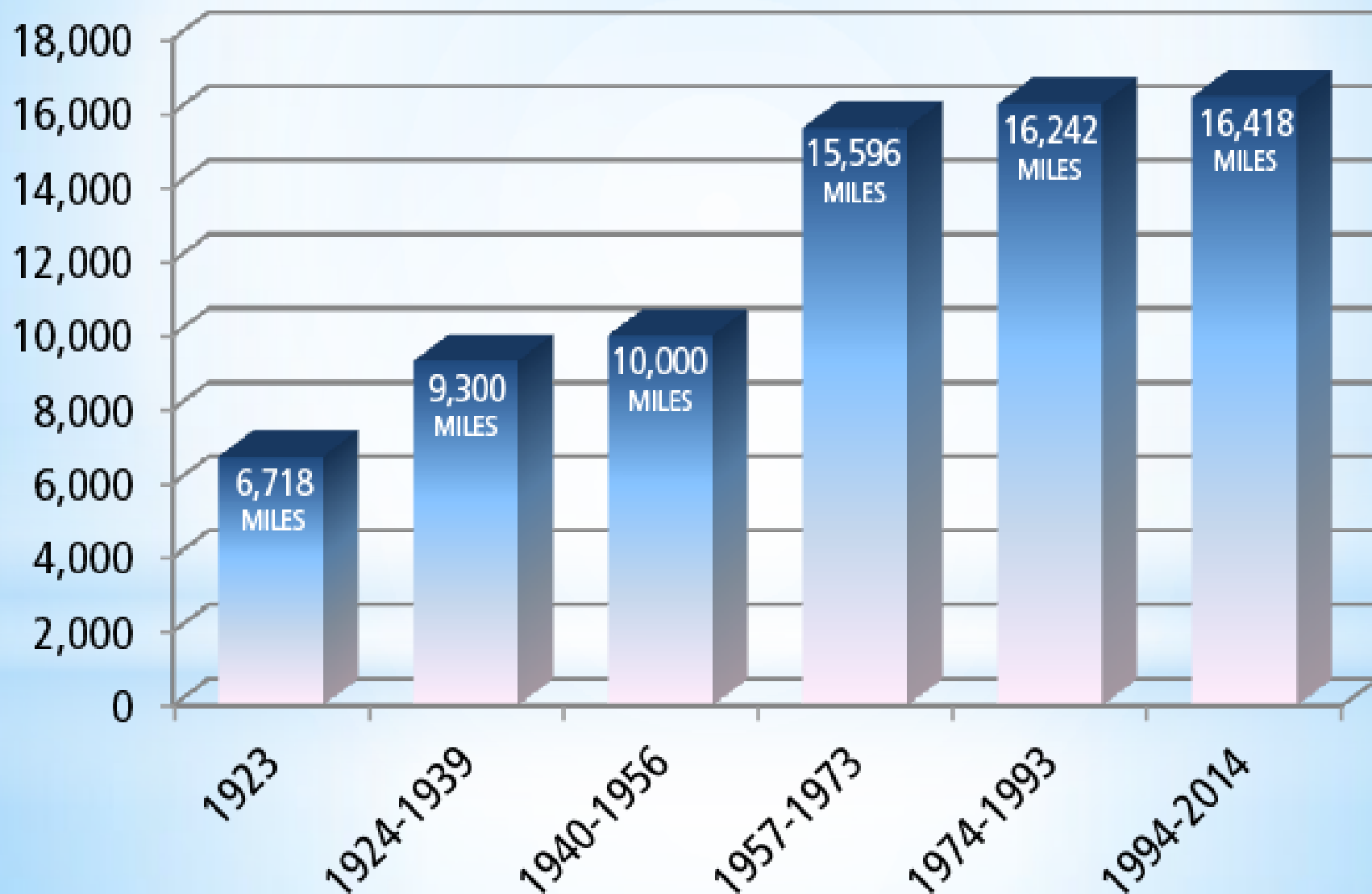


Arkansas ranks 12th in number of miles at 16,411 miles

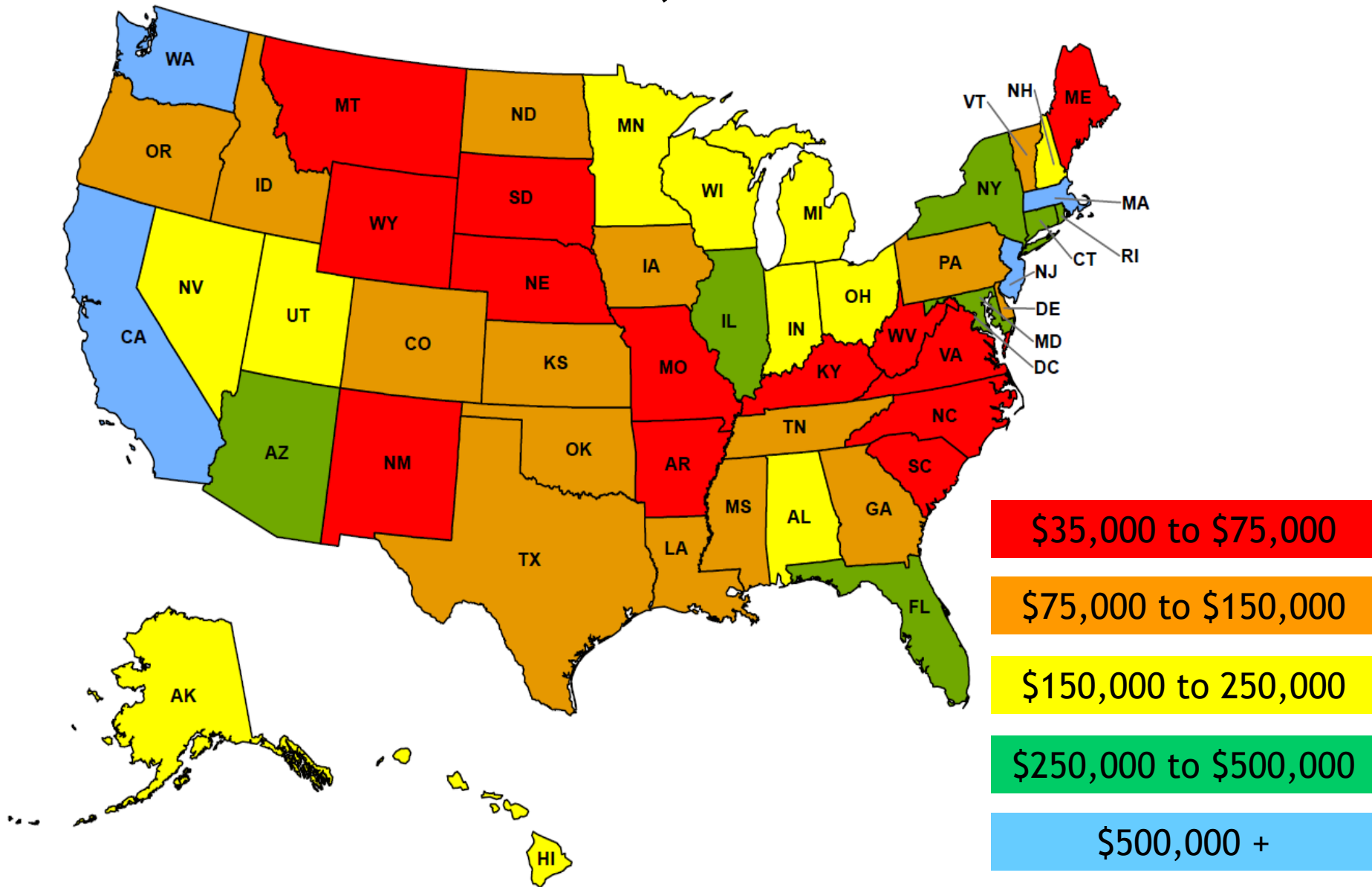


GROWTH OF THE HIGHWAY SYSTEM

MILES



Arkansas ranks 40th in revenue per mile at \$70,525



How We Compare

State	Centerline Miles	% Difference
TX	80,323	389%
MO	33,887	106%
LA	16,689	2%
AR	16,411	
IL	15,986	(3%)
CA	15,104	(8%)
NY	15,034	(8%)
TN	13,899	(15%)
OK	12,265	(25%)
FL	12,099	(26%)
MS	10,899	(34%)
Arkansas' National Rank	12th	

How We Compare

State	Centerline Miles	Licensed Drivers	% Diff.	Registered Vehicles	% Diff.
TX	80,323	15,450,000	637%	20,171,135	734%
MO	33,887	4,280,000	104%	5,820,656	141%
LA	16,689	3,280,000	56%	3,957,174	64%
AR	16,411	2,100,000		2,417,959	
IL	15,986	8,260,000	294%	10,193,438	322%
CA	15,104	24,390,000	1063%	28,074,977	1061%
NY	15,034	11,210,000	435%	10,674,135	341%
TN	13,899	4,610,000	120%	5,451,933	125%
OK	12,265	2,420,000	15%	3,460,012	43%
FL	12,099	13,670,000	552%	15,131,735	526%
MS	10,899	1,970,000	(6%)	2,073,535	(14%)
Arkansas' National Rank	12th	31st		32nd	

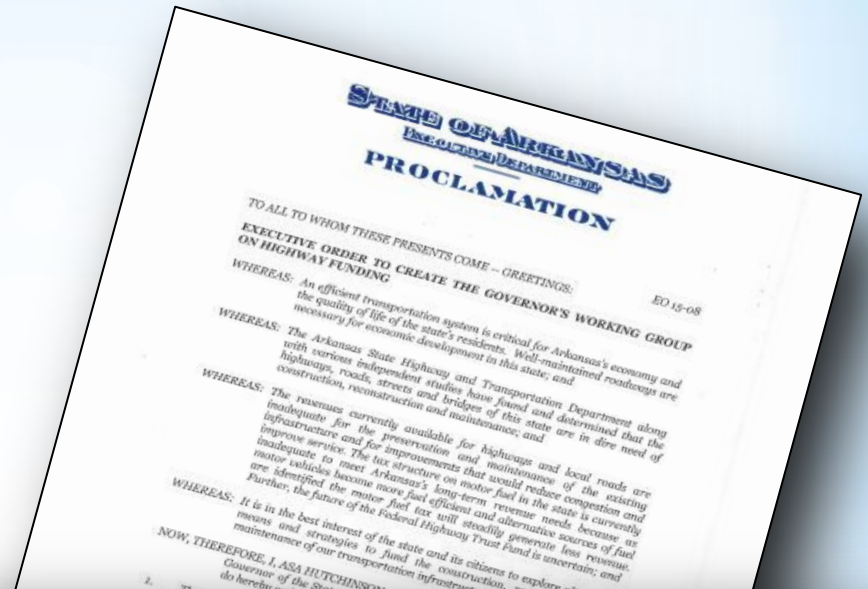
How We Compare

State	Centerline Miles	Daily Vehicle Miles Traveled (x 1,000)	% Diff.	Gasoline Tax Cents/Gallon	% Diff.	Gasoline Consumption (x 1,000 gallons)	% Diff.
TX	80,323	492,008	623%	20.00	(7%)	12,603,426	811%
MO	33,887	128,538	89%	17.00	(21%)	3,026,034	119%
LA	16,689	102,259	50%	20.00	(7%)	2,266,900	64%
AR	16,411	68,087		21.50		1,383,368	
IL	15,986	156,821	130%	19.00	(12%)	4,586,765	232%
CA	15,104	488,423	617%	39.50	84%	14,532,944	951%
NY	15,034	163,099	140%	26.65	24%	5,261,919	280%
TN	13,899	136,146	100%	20.00	(7%)	3,076,570	122%
OK	12,265	67,377	(1%)	17.00	(21%)	1,855,267	34%
FL	12,099	287,830	323%	16.90	(21%)	8,234,404	495%
MS	10,899	63,440	(7%)	18.40	(14%)	1,594,140	15%
Arkansas' National Rank	12th	27th		29th		32nd	

How We Compare

State	Centerline Miles	% Difference	Revenue Per Centerline Mile	% Difference
TX	80,323	389%	\$ 132,345	88%
MO	33,887	106%	\$ 50,624	(28%)
LA	16,689	2%	\$ 144,658	105%
AR	16,411		\$ 70,525	
IL	15,986	(3%)	\$ 252,211	258%
CA	15,104	(8%)	\$ 763,264	982%
NY	15,034	(8%)	\$ 431,581	412%
TN	13,899	(15%)	\$ 101,261	44%
OK	12,265	(25%)	\$ 127,678	81%
FL	12,099	(26%)	\$ 417,620	492%
MS	10,899	(34%)	\$ 98,595	40%
Arkansas' National Rank	12th		40th	

Governor's Working Group on Highway Funding



“An efficient transportation system is critical for Arkansas’ economy and the quality of life of the state’s residents.”

The Chamber of Commerce;
the State Department of Higher Education;
the Department of Finance & Administration;
and transportation and/or finance industries.

Governor's Working Group on Highway Funding

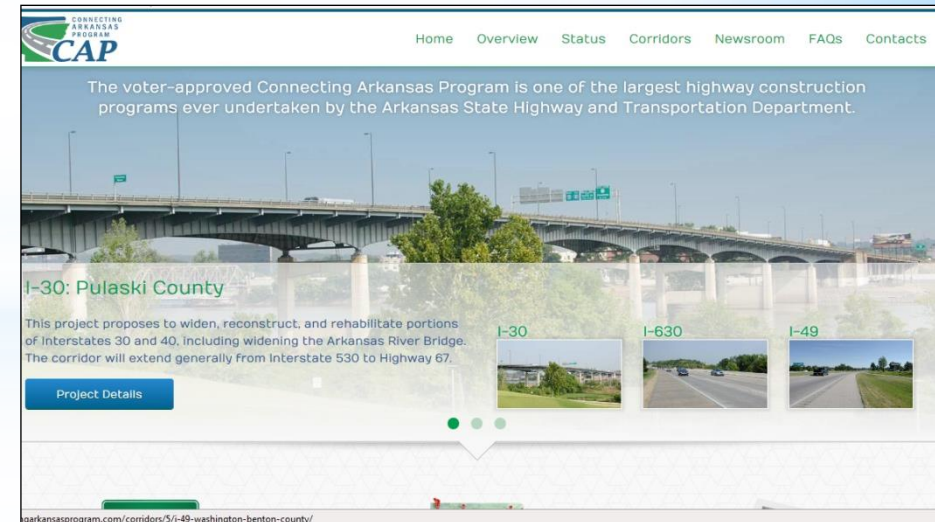
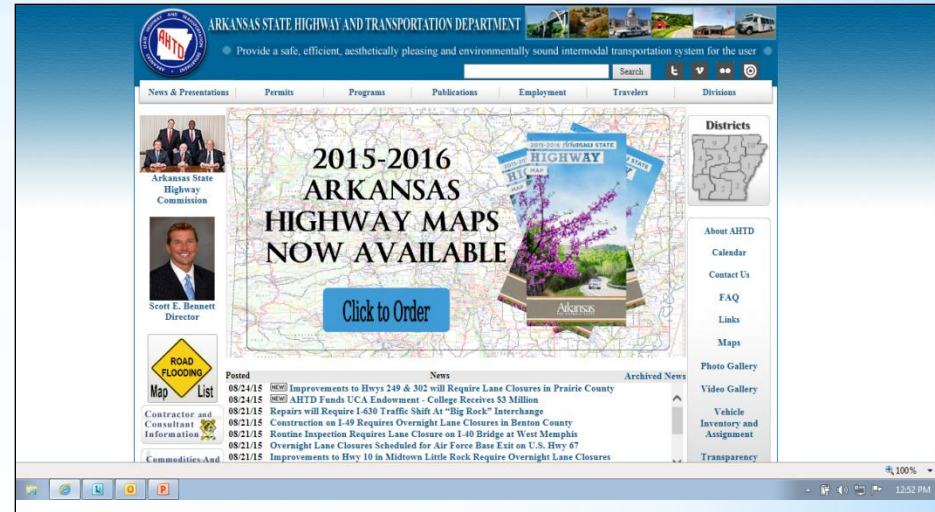


Additional Information

- ArkansasHighways.com
- ConnectingArkansasProgram.com
- Vimeo.com/AHTD
- IDriveArkansas.com
- [@AHTD](http://Twitter.com)



@AHTD



QUESTIONS?



Arkansas State Highway
and Transportation Department