

Scott E. Bennett, PE

Director of Highways and Transportation



Intermodal Transportation & Commerce Legislative Task Force

Wed, February 10, 2016

History





Prior to 1913

“We are always yapping about the ‘Good Old Days’ and how we look away back and enjoy it, but I tell you there is a lot of hooley to it.”

– Will Rogers





The Teens

- **1913 - First Arkansas Highway Commission Created**
- **No Highway Department / No Highway System**
- **First Highway Improvement Fund**
- **\$10 Registration Fee / Vehicle - \$72,000 Total Budget**
- **50,000 Vehicles**
- **36,000 Miles of Public Roads**

Highway 71 near Bella Vista



The Twenties



Repair Shop of State
Highway Department,
Little Rock, early 1930s

- **First Gas Tax – 1 cent per gallon**
- **Arkansas Highway Commission Changed Twice**
- **1927 - All Road Improvement District miles and \$100 Million in Debt Transferred to State**

Highway Districts 1923

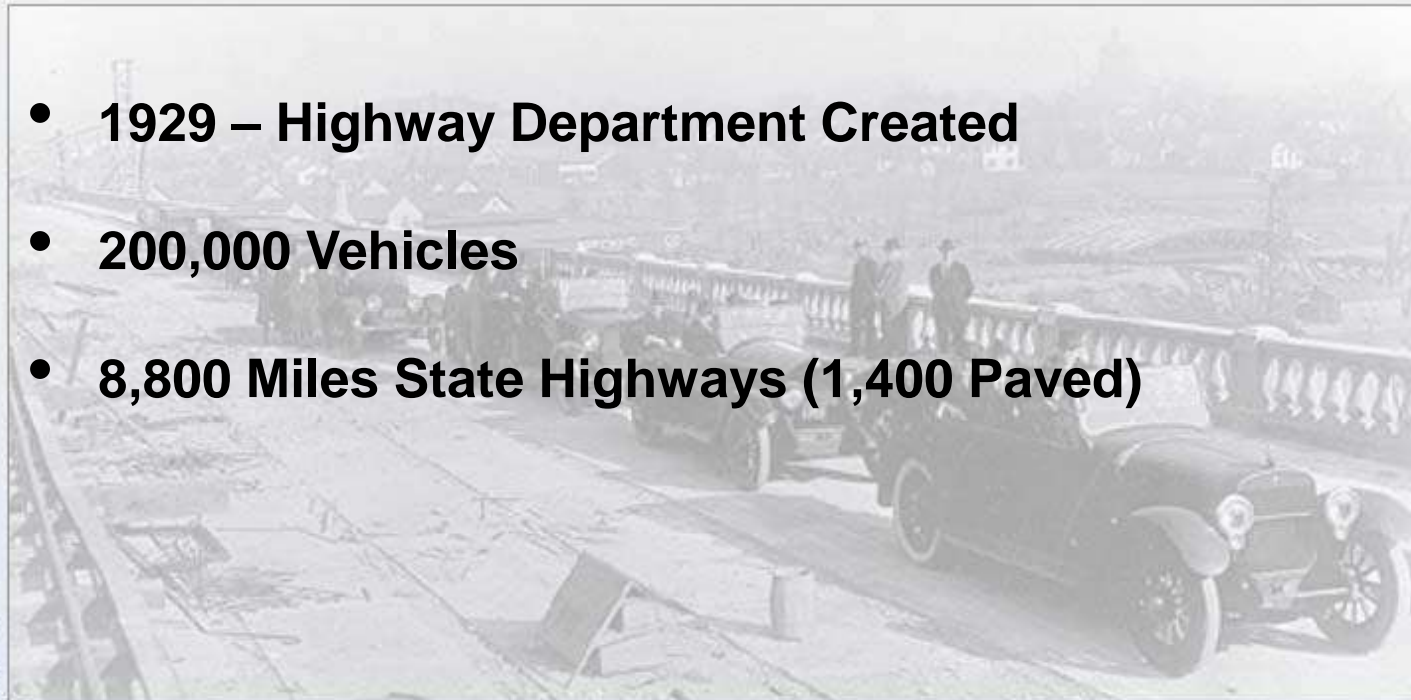


Highway Districts 1925



Broadway Bridge dedication,
1922. View is looking towards
North Little Rock

- **1929 – Highway Department Created**
- **200,000 Vehicles**
- **8,800 Miles State Highways (1,400 Paved)**





The Thirties



Magnet Truck, Picked up an average of 20 lbs of metal per mile

- **Arkansas Highway Commission Changed Two More Times**
- **Gas Tax Raised to 6.5 cents per Gallon**
✓ 1960's Before Next Increase



State Highway Department HQ, 1939

- **255,000 Vehicles**
- **9,300 Miles State Highways (3,000 Paved)**





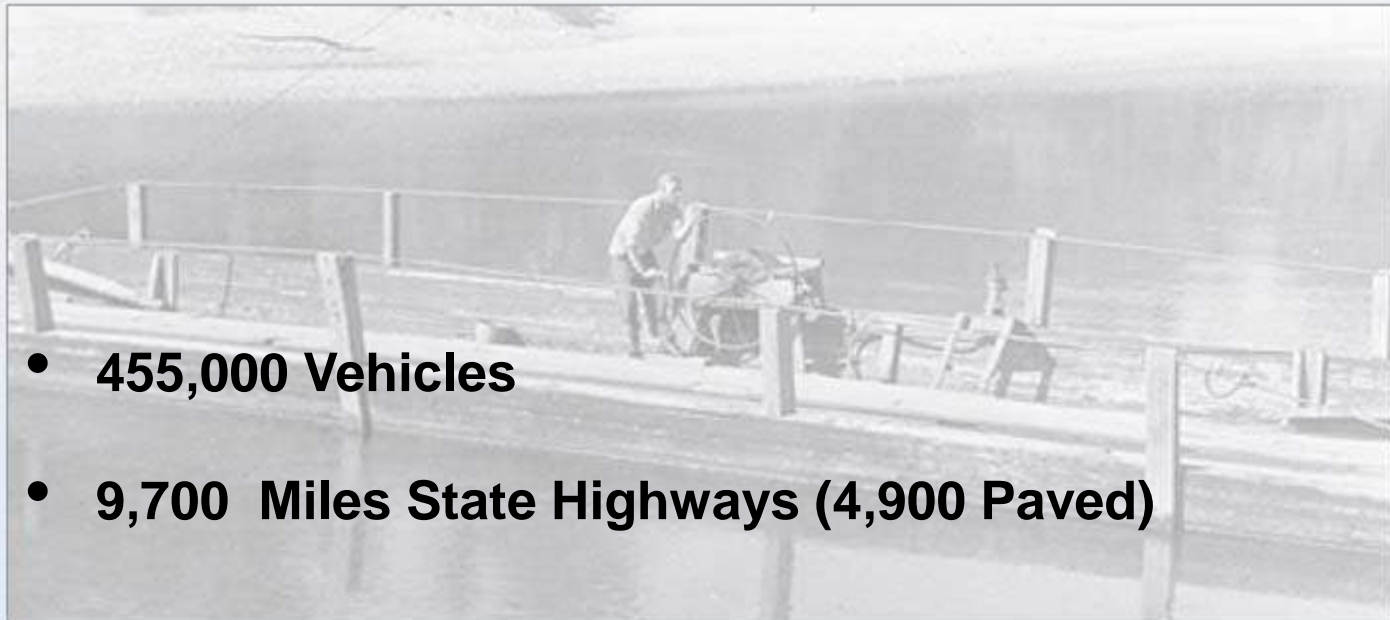
The Forties

- **World War II**
- **Arkansas Highway Commission Changed Two More Times**
- **Political Influence on Highways – Growing Discontent**



Operation of the Henderson Ferry at Norfolk Lake cost \$117,981 for 1947-48. During this period 189,856 vehicles were ferried over at an average cost of 62¢ per vehicle.

Dillard's Ferry, a hand-cranked operation, crossed the Buffalo River at Highway 14 from 1929-1958.



- **455,000 Vehicles**
- **9,700 Miles State Highways (4,900 Paved)**



The Fifties



- New Governor Elected – Promise to Improve Roads
- 1951 - Highway Audit Commission Report

✓ *“the advice, counsel and expert know-how which is available from the Department’s own technical and administrative staffs bear scant weight indeed when they are in conflict with the political pressures and political promises of the moment.”*

- Arkansas Highway Commission
 - ✓ 9 Legislative Acts Restructuring Commission since 1913
- 1952 – Mack Blackwell Amendment
- Interstate Era
- 750,000 Vehicles
- 11,000 Miles State Highways (8,800 Paved)

Widening Hwy 67 near Malvern, 1956





The Sixties

- **Legislature**

- ✓ **Allowed Counties to Transfer County Roads to the Department as State Highways**
- ✓ **Increase of 3,400 miles**

Highway 144, South of Lake Village

- **New Highway Department Headquarters – Current Location**

Highway Department Complex at I-30 / Hwy 338, late 1960s

- **Arkansas – National Forefront in Interstate Construction/Completion**

Weights & Standards Division, AHD

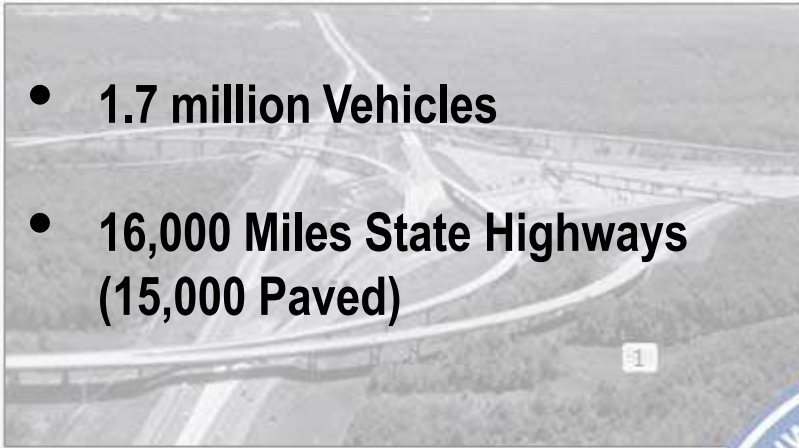
- **1.1 million Vehicles**
- **14,500 Miles State Highways (13,000 Paved)**

North Terminal Interchange, 1962



The Seventies

- 1.7 million Vehicles
- 16,000 Miles State Highways (15,000 Paved)



South Terminal Interchange

- Debt Free

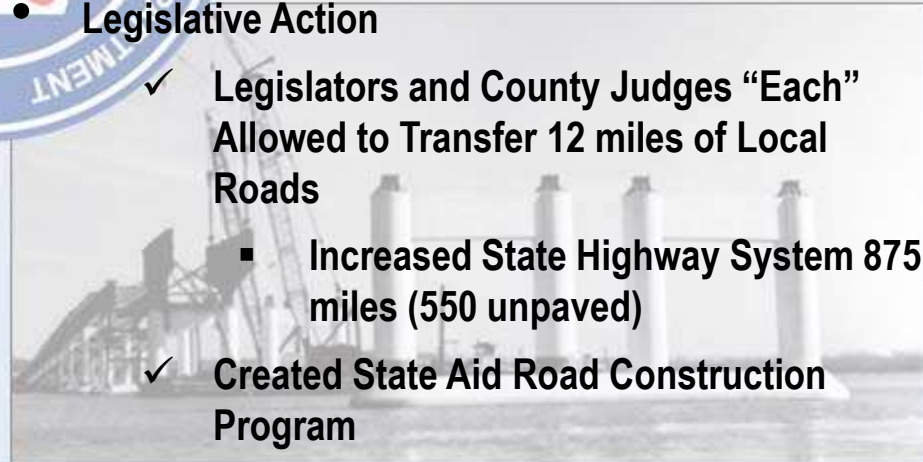


AHC Lawrence Blackwell burning bonds at a ceremony in 1975.



- Legislative Action

- ✓ Legislators and County Judges “Each” Allowed to Transfer 12 miles of Local Roads
 - Increased State Highway System 875 miles (550 unpaved)
- ✓ Created State Aid Road Construction Program



I-430 River Bridge, 1973

- Arkansas Department of Highways renamed Arkansas Highway and Transportation Department – Expanded Authority



Toad Suck Ferry on Arkansas River at Highway 60, 1970



The Eighties

- 16,200 Miles State Highways (15,900 Paved)
- 2.0 million Vehicles



East-West Arterial linking Hwy 270 W and Hwy 70 W in Hot Springs.



- 1985 - Rural Road Program

Snow and ice removal costs reached \$4 M, 1984



- Transportation Safety Agency Transferred to AHTD

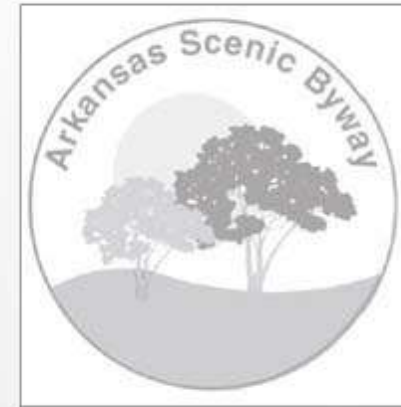
Transportation Safety Agency, 1989



The Nineties

- **1991 – Highway Improvement Program**
- **1993 – Federal Gas Tax**
 - ✓ Gas Tax - 18.4 cents per gallon
 - ✓ Diesel Tax – 24.4 cents per gallon
 - ✓ Has Not Changed Since 1993
- **1999 – State Gas Tax**
 - ✓ Gas Tax Raised 3 cents per gallon to 21.5 cents
 - ✓ Diesel Tax Raised 4 cents per gallon to 22.5 cents
- **1999 – Interstate Rehabilitation Program**

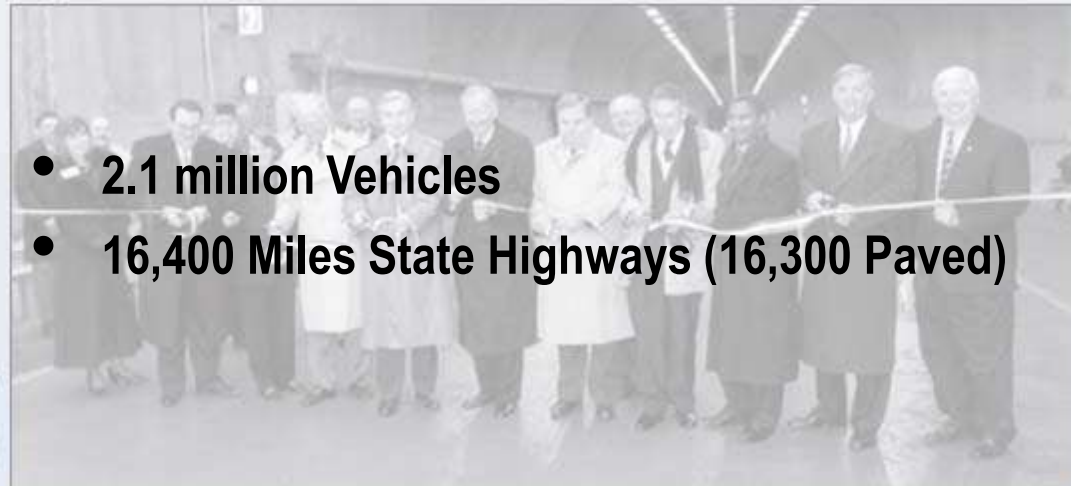
1991 Highway Improvement Program planned to improve or replace approximately 560 bridges.



Section of Hwy 7
named first Scenic
Byway of Arkansas.

- **2.1 million Vehicles**
- **16,400 Miles State Highways (16,300 Paved)**

Dedication of I-540 and Bobby
Hopper Tunnel, 1999





The New Millennium

- 2011 – 2nd Interstate Rehabilitation Program
- 2012 – Connecting Arkansas Program



Winter Weather in Dec 2000 and Jan 2001 cost almost \$40 M.



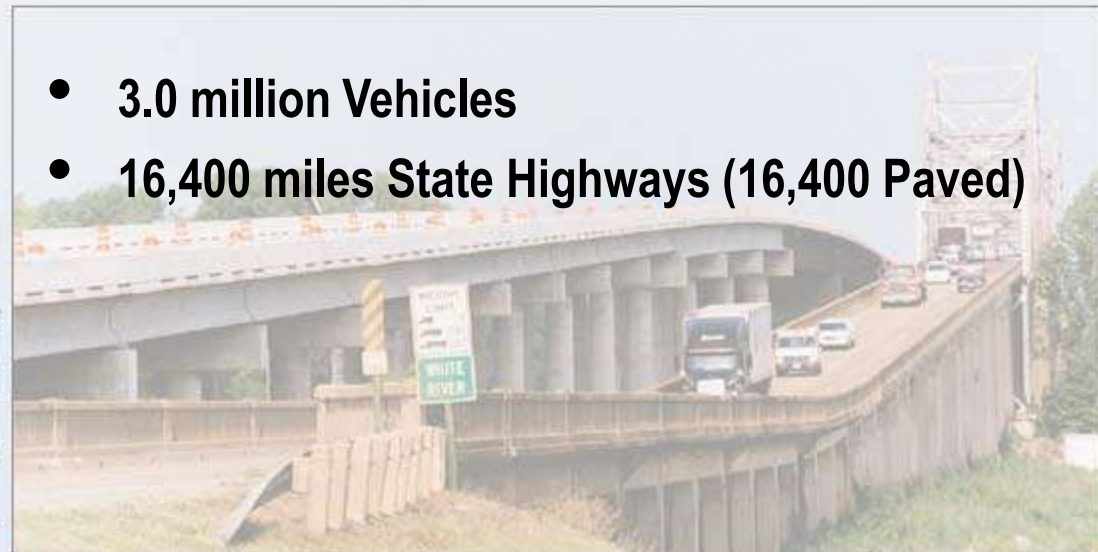
- Governor's Working Group on Highway Funding

Governor's Working Group



New White River Bridge on Hwy 64 at Augusta opened in 2001.

- 3.0 million Vehicles
- 16,400 miles State Highways (16,400 Paved)

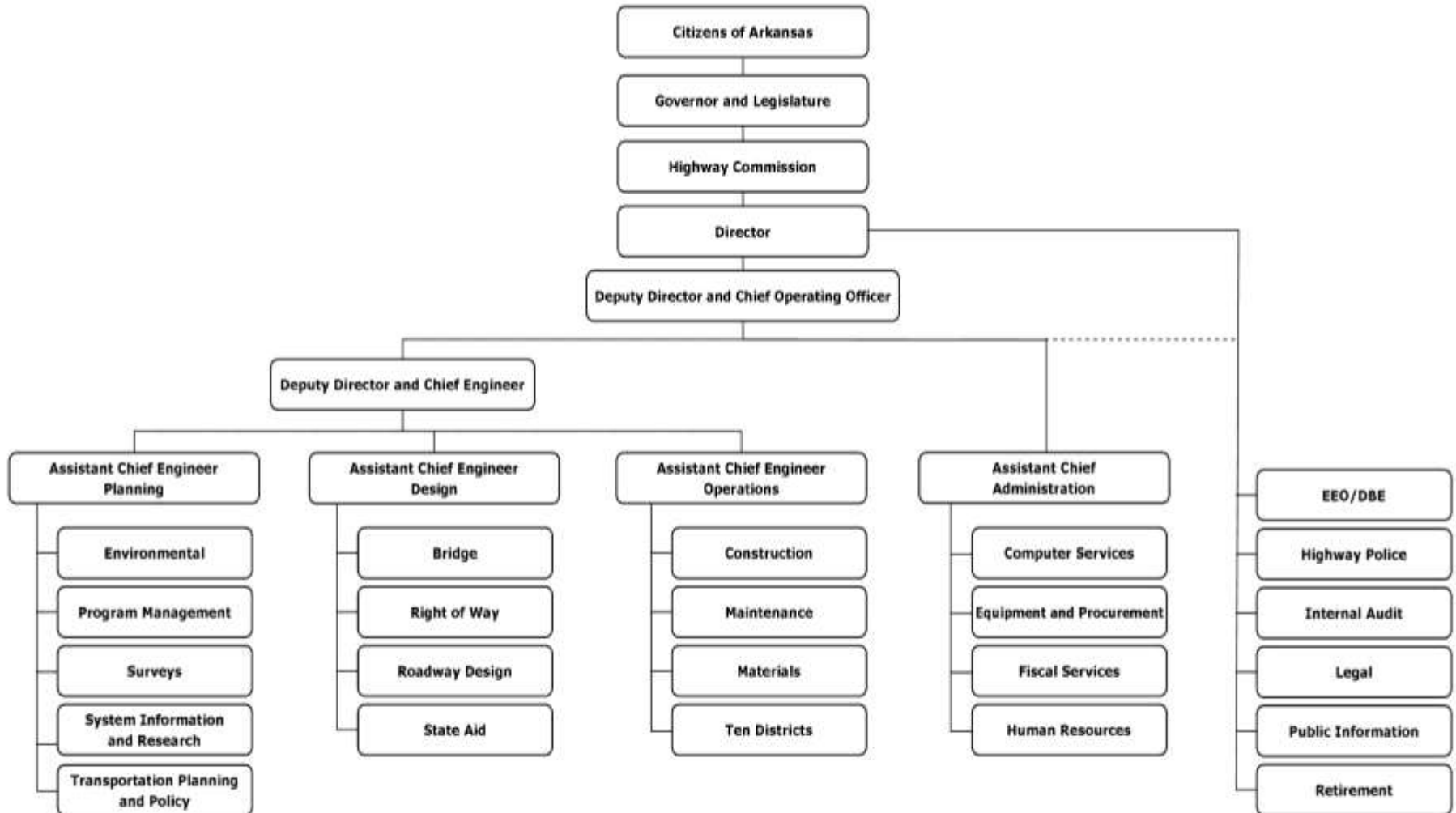


Organization





Organization Chart



Scott G. Bennett

Director of Highways and Transportation

March 13, 2015

Date



AHTD Quick Facts



3rd Largest State Agency
(3,634 Employees)

Maintains
16,418 miles of Highway
7,335 Bridges

Central Offices in Little Rock

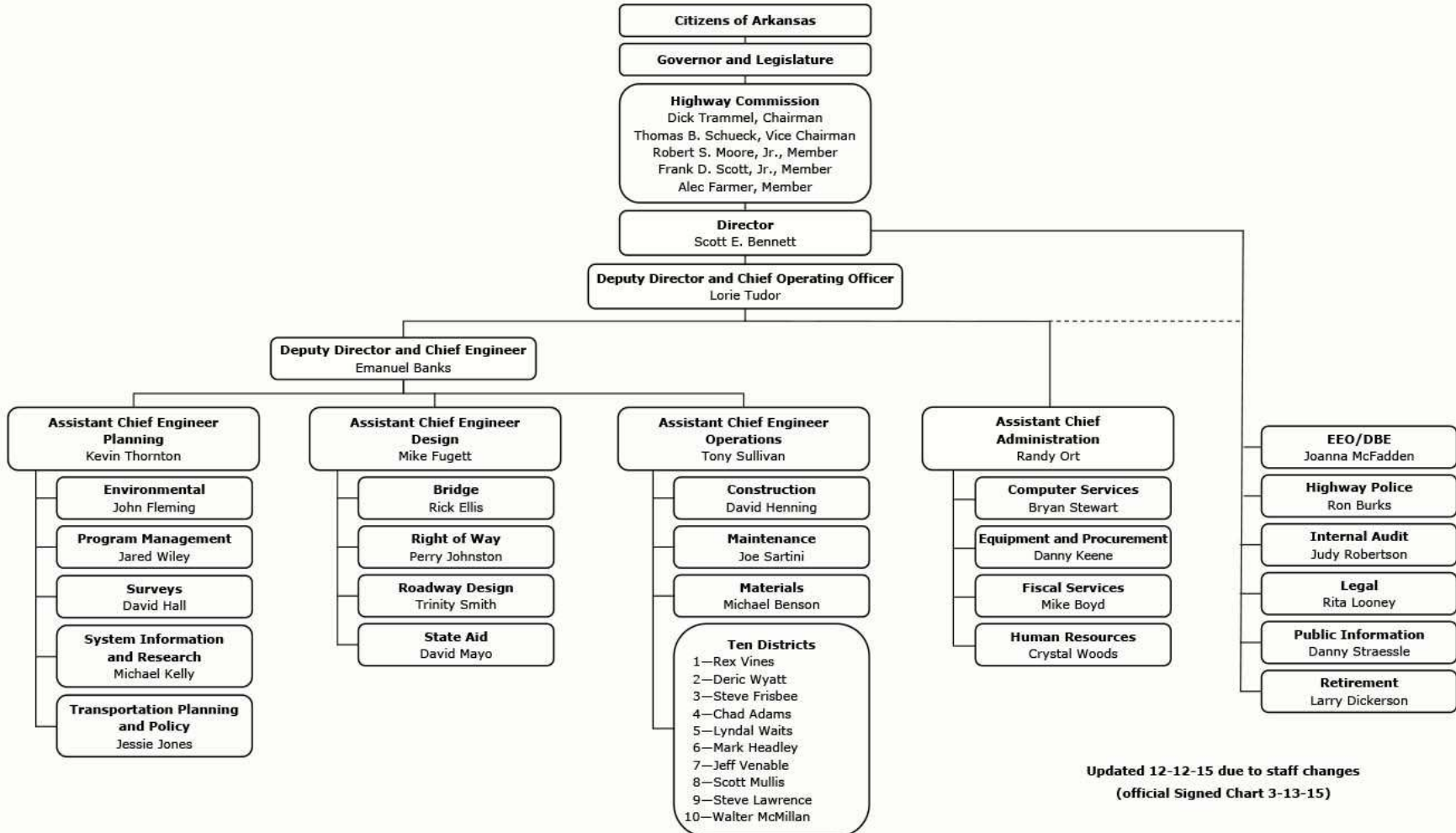
10 Districts Statewide

Mission:
Provide a safe, efficient, aesthetically pleasing
and environmentally sound intermodal
transportation system for the user.



Our People

ARKANSAS STATE HIGHWAY AND TRANSPORTATION DEPARTMENT ORGANIZATION CHART

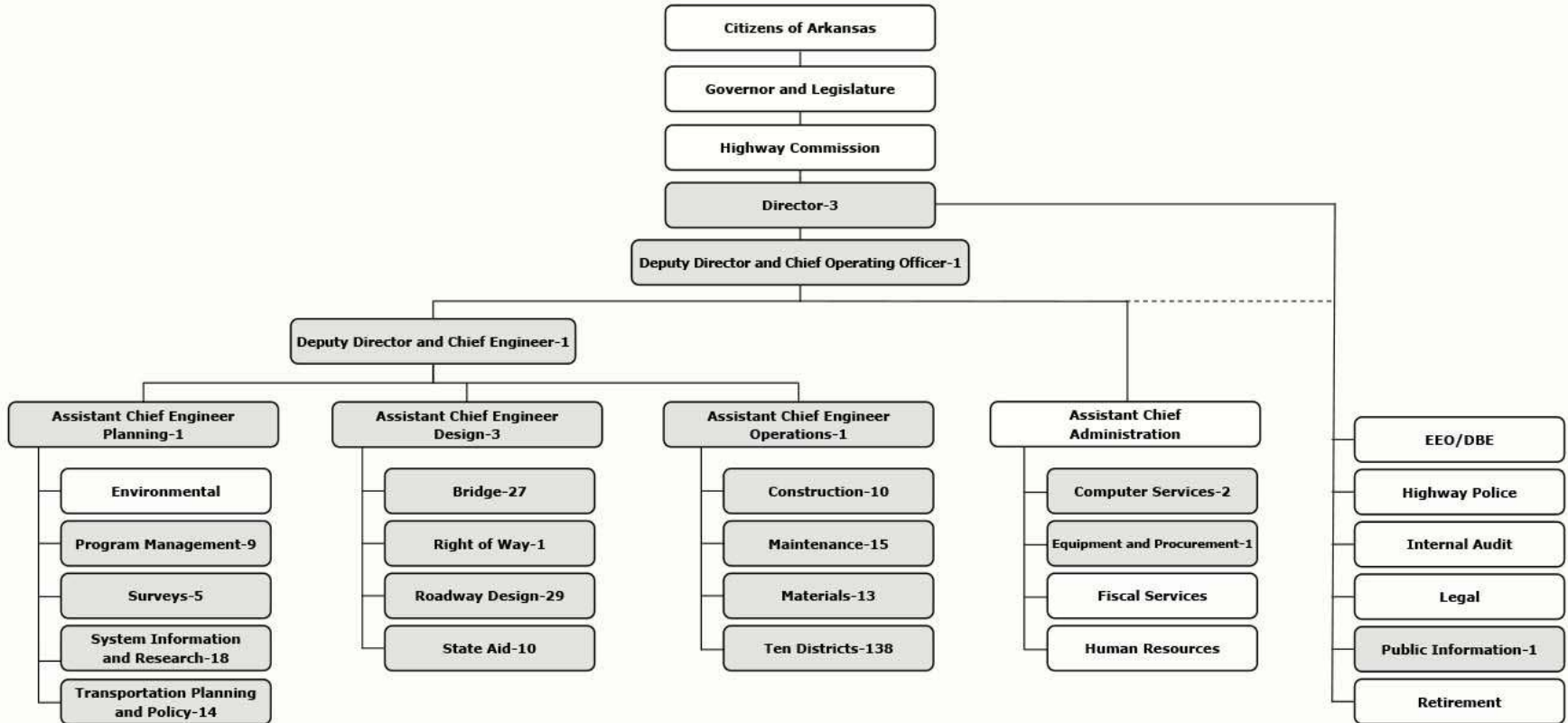


Updated 12-12-15 due to staff changes
(official Signed Chart 3-13-15)



Engineer Staff

ARKANSAS STATE HIGHWAY AND TRANSPORTATION DEPARTMENT ORGANIZATION CHART



**DISTRIBUTION OF AHTD ENGINEERS
AS OF 1-28-16
303**

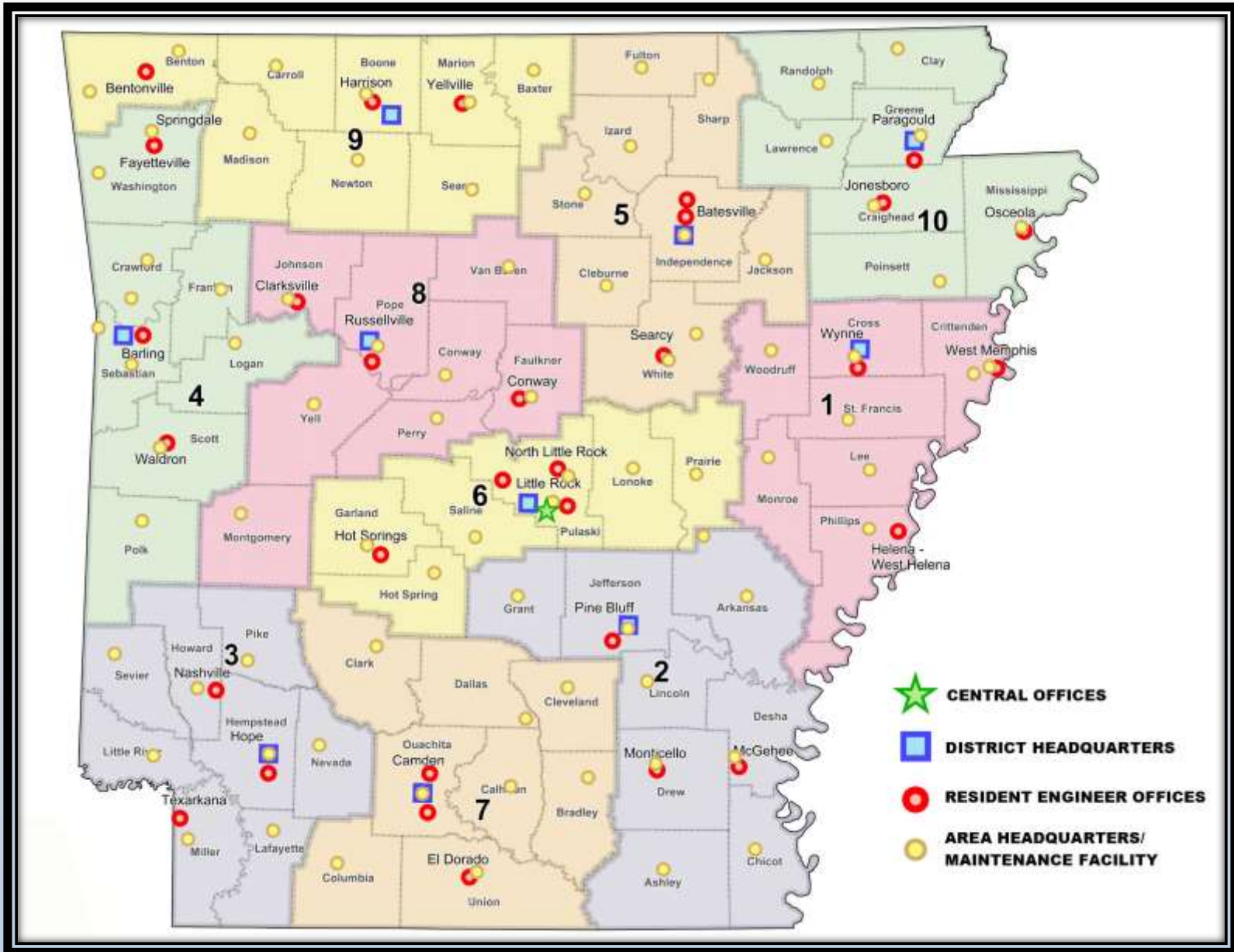
Director of Highways and Transportation

March 13, 2015

Date

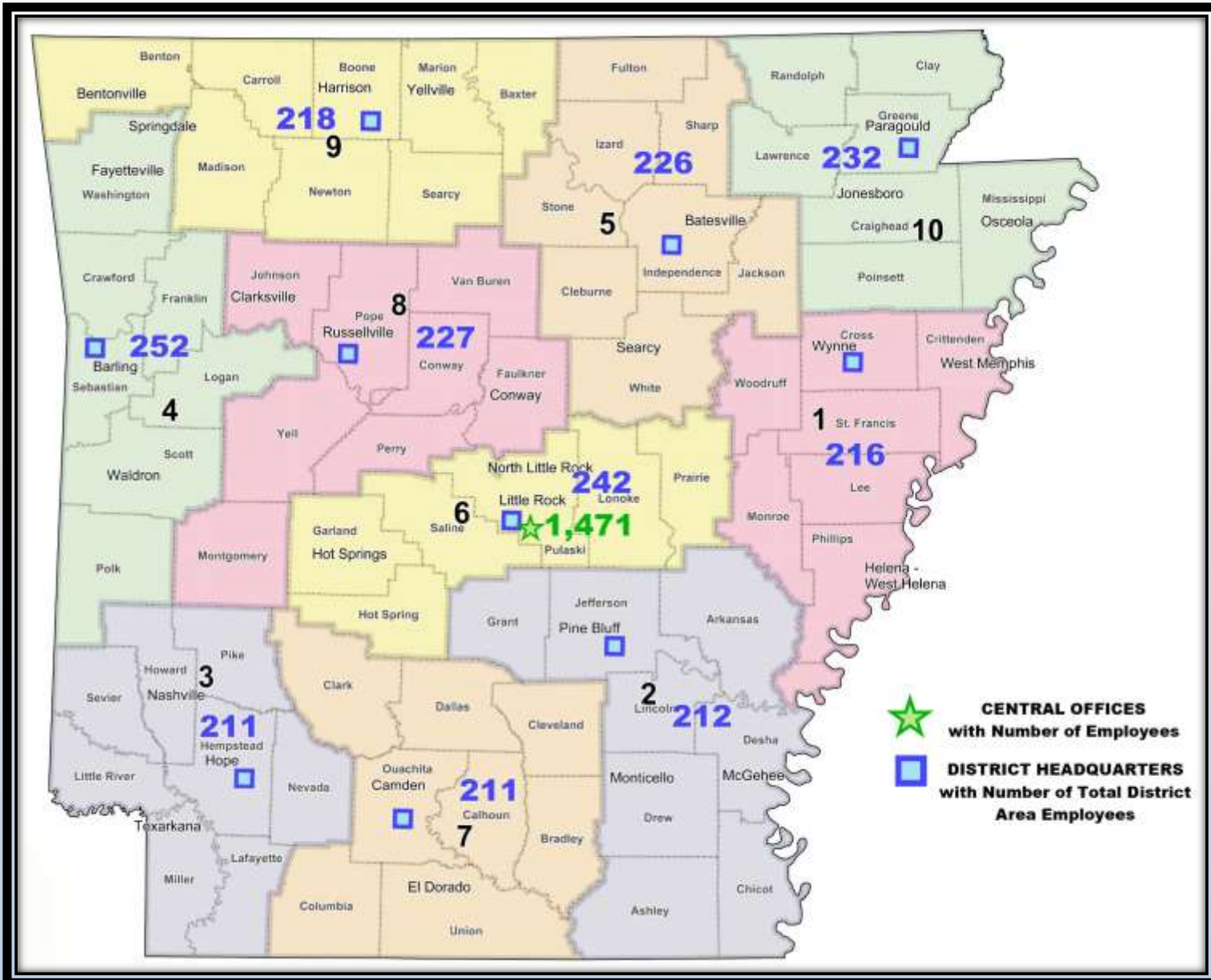


District Organization





District Organization





Arkansas Motor Fuels Tax History

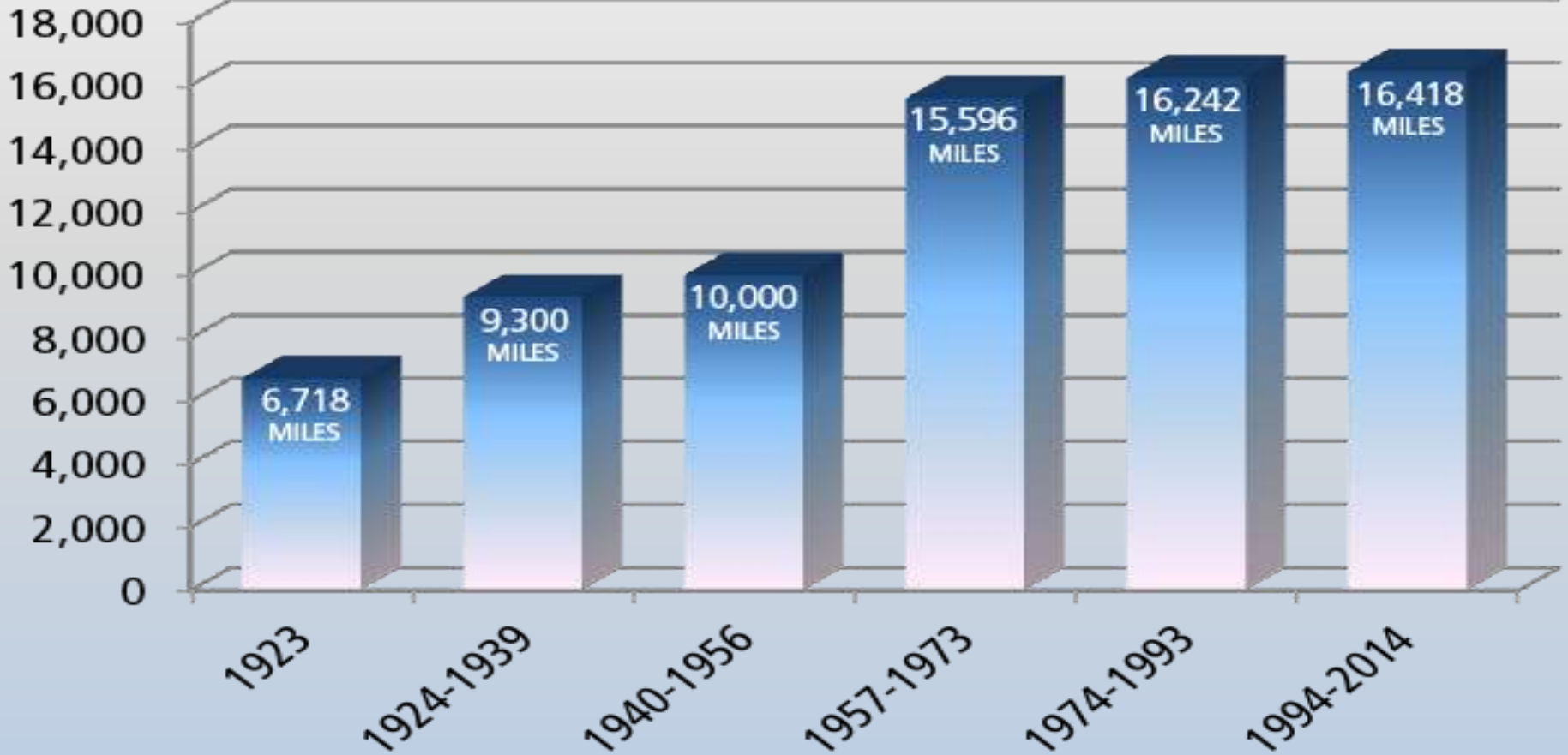
Year	Act No.	Gas	Diesel
1921	606	1.0	
1923	501	3.0	
1923SS	5	4.0	
1927	240	5.0	
1931	63	6.0	
1934	11	6.5	
1941	378	6.5	6.5
1953	103	6.5	6.5
1965	40	7.5	8.5
1973	445	8.5	9.5
1979	437	9.5	10.5
1985	456	13.5	12.5
1989	173	13.7	12.7
1991	219	13.7	16.7
1991	364/386	18.7	18.7
1996		18.6	18.6
1999	1028	19.6	20.6
2000	1028	20.7	22.7
2001	1028	21.7	



Growth of the State Highway System

GROWTH OF THE HIGHWAY SYSTEM

MILES





Statewide Intermodal Transportation Plan



• \$54 – \$63 Billion in Needs
for 2016-2040

www.wemovearkansas.com



www.facebook.com/ARLRITP2040

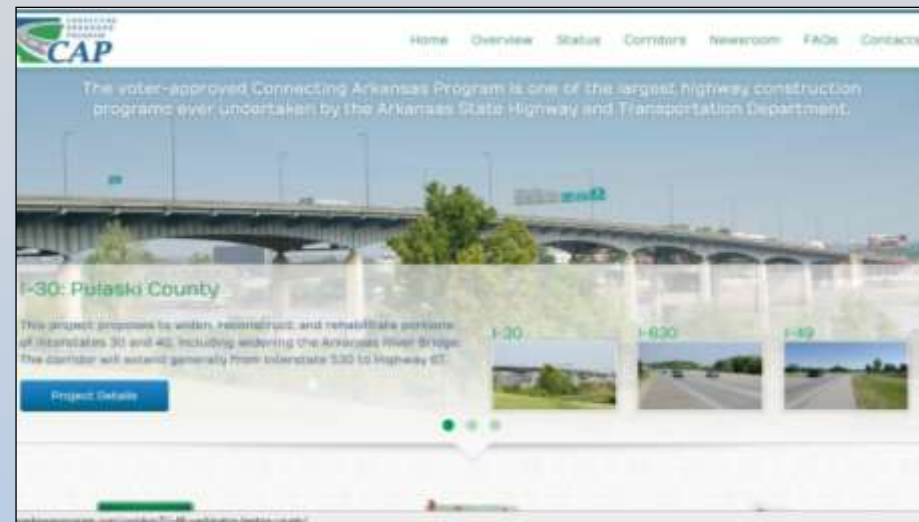




- ArkansasHighways.com
- ConnectingArkansasProgram.com
- Vimeo.com/AHTD
- IDriveArkansas.com
- [Twitter.com @AHTD](https://twitter.com/AHTD)
- ArkansasHighways.com/Publications/Historical_Review.pdf



@AHTD



Questions?

