

**Lorie H. Tudor, P.E.**  
**Deputy Director and Chief Operating Officer**

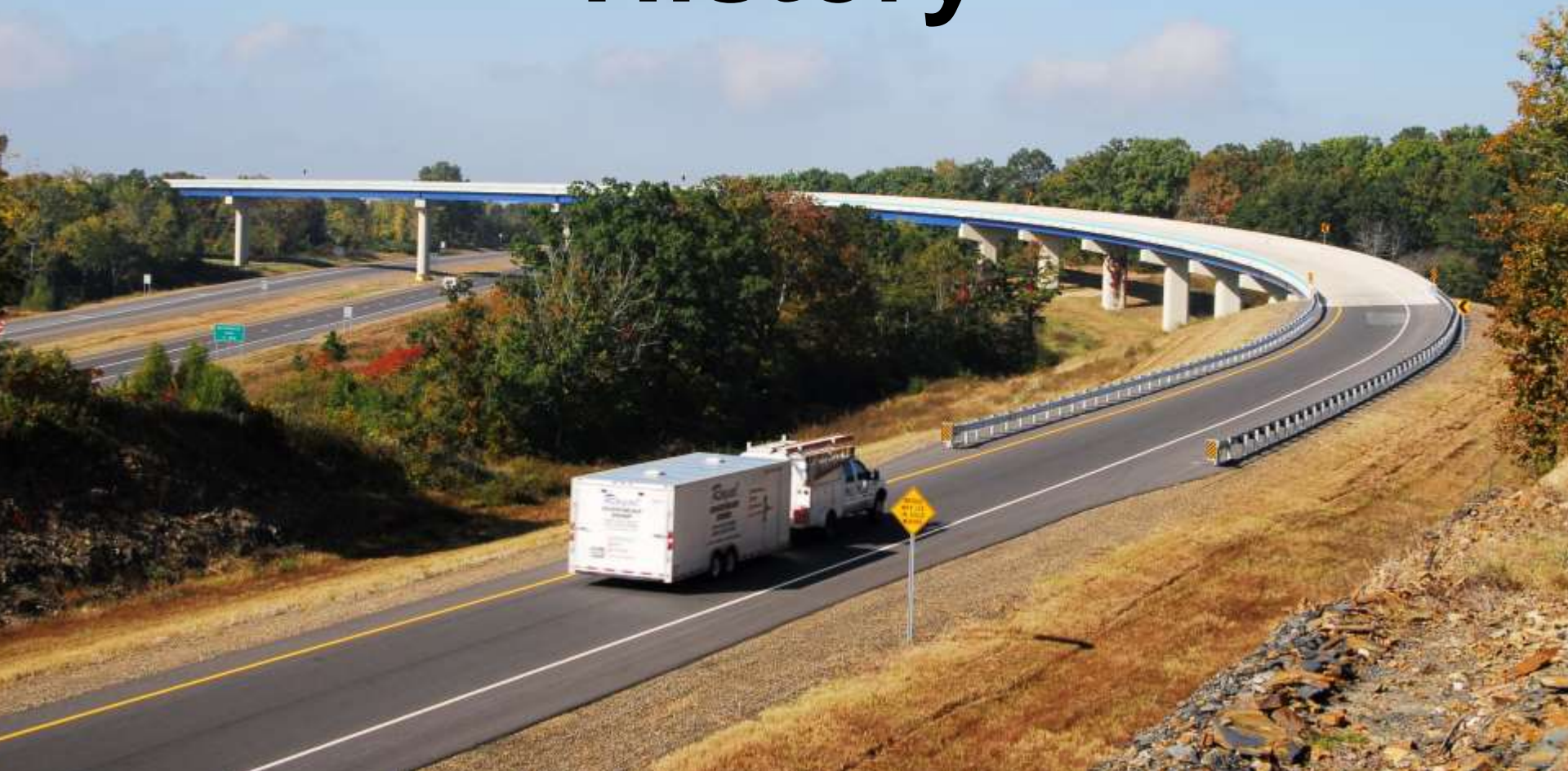


# **ARKANSAS STATE HIGHWAY AND TRANSPORTATION DEPARTMENT**

**Hot Springs Village TEA Party**  
Tuesday, June 7, 2016



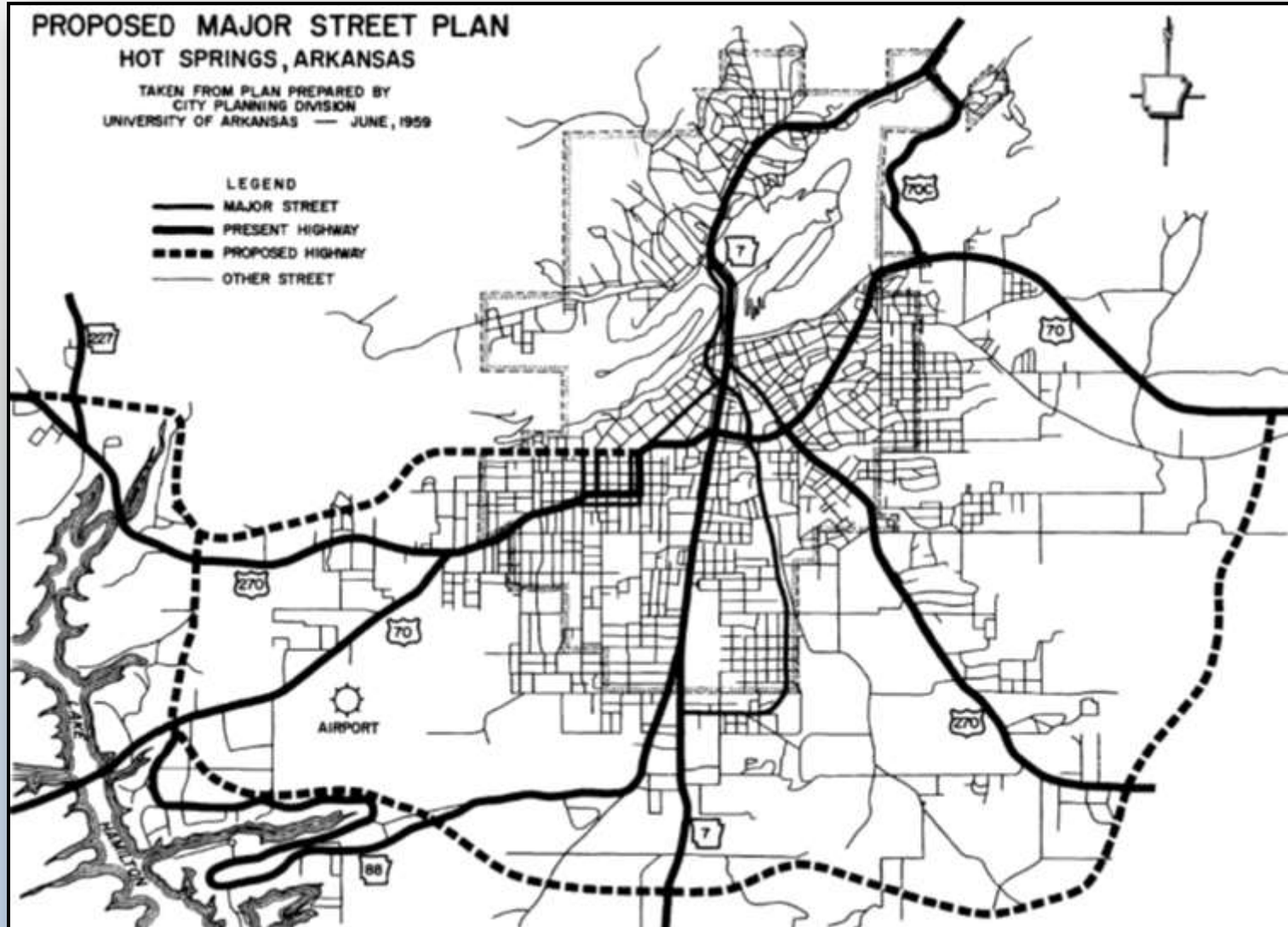
# MLK Expressway History





# Highway 270 West – Highway 70 East

- **1959 – Hot Springs Master Street Plan**





# Construction Projects



## Highway 270 West – Highway 70 West

- Three Construction Projects (1.0 mile)
- Began in October 1987
- Completed in June 1991

Termini	Cost (x \$1 M)	Completed
Hwy. 270 West - Hwy. 70 West (Grading & Strs.)	\$ 3.7	October 1990
Hwy. 270 West - Hwy. 70 (Base & Surfacing)	\$ 2.2	June 1991
Hwy. 70 West Interchange	\$ 0.5	May 1990
Total	\$ 6.4	





# Construction Projects



## Highway 70 West – Highway 7

- Three Construction Projects (3.5 miles)
- Began in August 1990
- Completed in May 1993

Termini	Cost (x \$1 M)	Completed
Hwy. 70 West - Hwy. 7 (Grading & Strs.)	\$ 6.3	October 1992
So. Glen Drive & Hwy. 88 Structures	\$ 2.5	September 1992
Hwy. 70 West - Hwy. 7 (Base & Surfacing)	\$ 4.3	May 1993
Total	\$ 13.1	





# Construction Projects



## Highway 7 – Highway 270 East

- Three Construction Projects (4.0 miles)
- Began in June 1992
- Completed in October 1995

Termini	Cost (x \$1 M)	Completed
Hwy. 7 - Hwy. 128 (Grading & Strs.)	\$ 6.6	March 1994
Hwy. 128 - Hwy. 270 East (Grading & Strs.)	\$ 4.7	September 1994
Hwy. 7 - Hwy. 270 East (Base & Surfacing)	\$ 5.2	October 1995
Total	\$ 16.5	





# Construction Projects



## Highway 270 East – Highway 70 East

- Three Construction Projects (1.8 miles)
- Began in August 2000
- Opened to Traffic in May 2006
- Additional Highway 70 East Interchange Projects – Completed June 2013

Termini	Cost (x \$1 M)	Completed
Hwy. 270 East - Hwy. 70 East (Grading & Strs.)	\$ 9.8	January 2003
Hwy. 70 East Interchange (Grading & Strs.)	\$ 12.8	May 2006
Hwy. 270 East-Hwy. 70 East (Base & Surfacing)	\$ 3.4	May 2006
Hwy. 70 East Interchange (Phase II)	\$ 3.6	February 2011
Hwy. 70 East Interchange (Phase III)	\$ 6.9	June 2013
Total	\$ 36.5	





# Highway 270 West – Highway 70 East

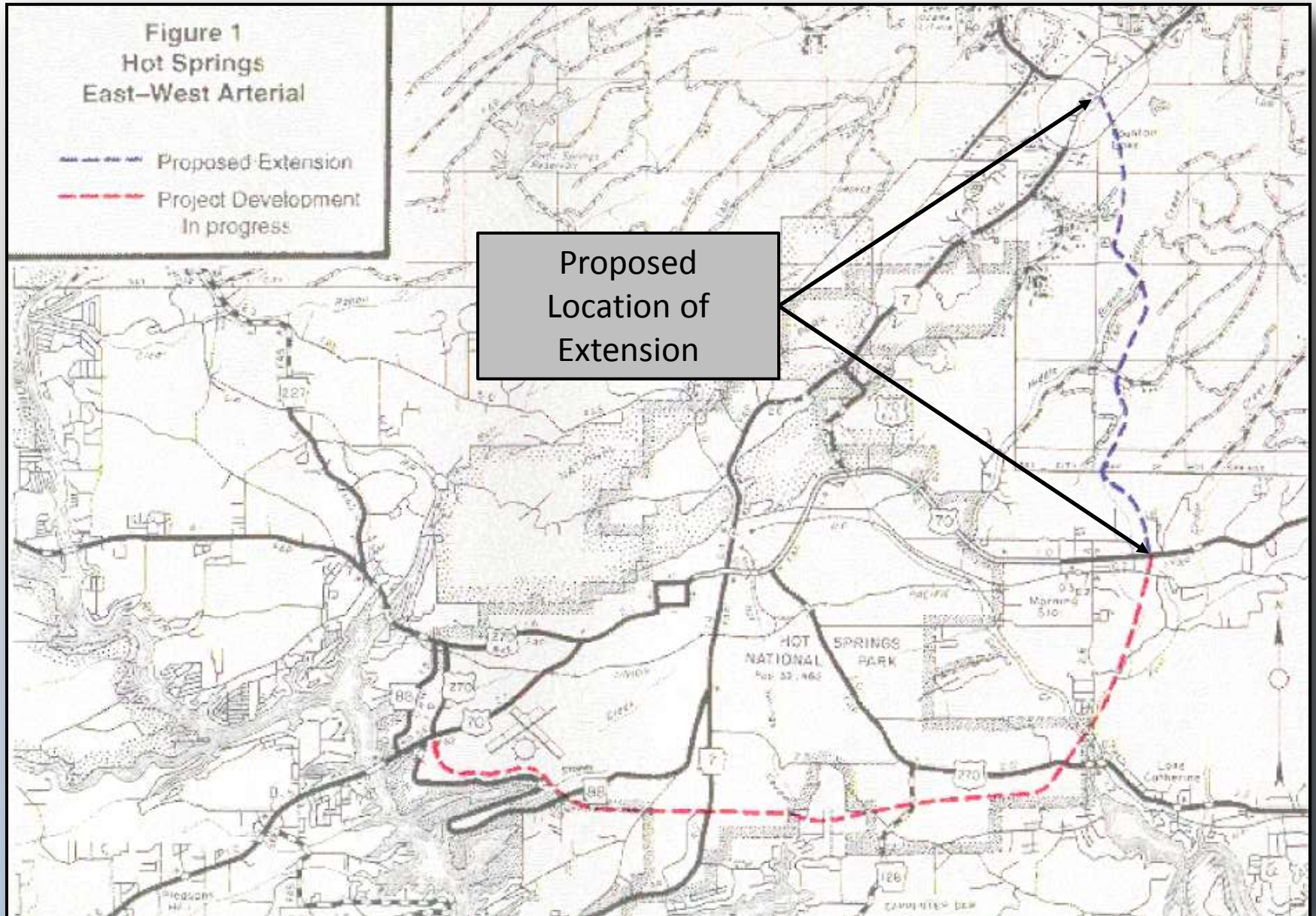
- **1959 – Hot Springs Master Street Plan**
- **1987 – 2013 Construction**
- ✓ **\$73 Million**







# Highway 70 East to Highway 7 North



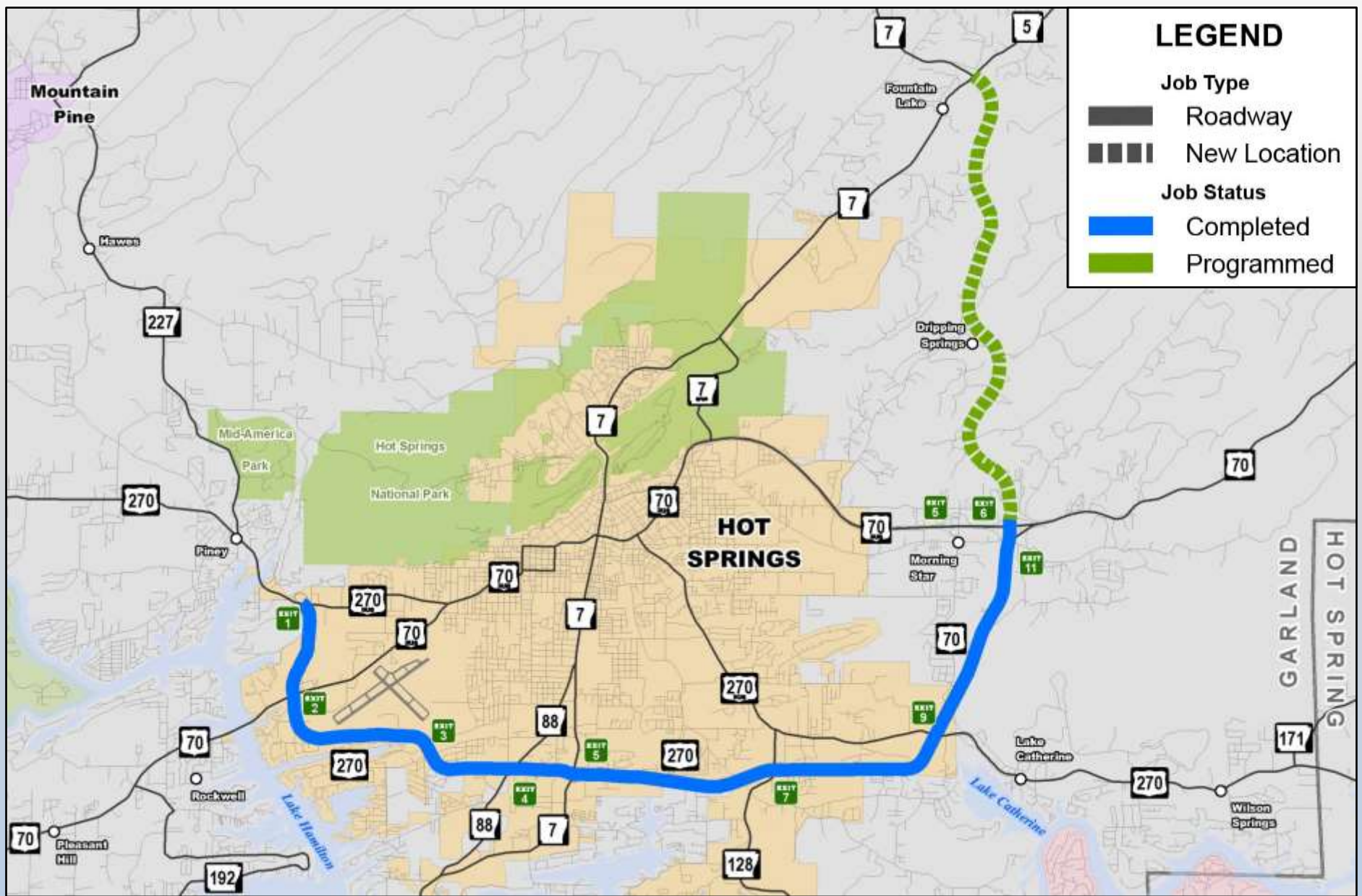


# Highway 70 East to Highway 7 North

- **1991 – Planning Study Initiated**
- **1994 – Planning Study Adopted**
- **2005 – Environmental Assessment**
  - ✓ **Location Determined**
  - ✓ **2005 Cost - \$113.4 Million**
- **2005 to 2009 – Earmarked Funds \$9.0 Million**
  - ✓ **Project Development Began**
- **2006 – USGS Study Elevated Water Temperatures**
  - ✓ **Project Development Suspended**
- **2009 – USGS Study Complete**



# MLK Expressway Extension





# MLK Expressway Extension

## ARKANSAS STATE HIGHWAY COMMISSION

DICK THAMMEL  
CHAIRMAN  
THOMAS B. SCHWICK  
VICE CHAIRMAN  
ROBERT E. MOORE, JR.  
MEMBER AT-LARGE

P.O. Box 2261  
LITTLE ROCK, ARKANSAS 72203-2261  
PHONE (501) 569-2000 • VOICE/TTY 711 • FAX (501) 569-2001  
WWW.ARKANSASHIGHWAYS.COM • WWW.DRIVEARKANSAS.COM

FRANK D. SCOTT, JR.  
STATE ROAD  
DAN FARMER, JR.

The Honorable Rick Davis  
Garland County Judge  
501 Ouachita  
Hot Springs, AR 71901

Dear Judge Davis:

Reference is made to your recent letter regarding the proposed extension of Highway 70/270 (Martin Luther King Jr. Expressway).

As we previously discussed, the plan is to begin development of the referendums for the Statewide Transportation Improvement Program (STIP) in 2016-2019 to begin development of the referendums. \$5 million of Department funds and \$5 million of Federal funds will be finalized and approved by the end of this year. However, project development and construction would not begin until a firm funding agreement is in place.

In order to expedite development of the referendums, we need to know by September 2015, whether the County will support the project. If the County deadline will also allow us to redirect the project if voters do not approve the proposal.

## 2016-2020 Federal Fiscal Years



ARKANSAS STATE HIGHWAY AND TRANSPORTATION DEPARTMENT  
1000 North Arkansas Street, Little Rock, Arkansas 72202  
In Compliance with 23 USC 10102.2 (a) (1)  
November 2015



## West Central Arkansas Planning & Development District, Inc.

Wayne Pratt  
Executive Director  
July 6, 2015

Scott Bennett, Director  
Arkansas Highway & Transportation Department  
1000 North Arkansas Street  
Little Rock, AR 72203-2261

RECEIVED  
JUL 07 2015

DIRECTOR'S OFFICE  
ARKANSAS STATE HIGHWAY AND  
TRANSPORTATION DEPARTMENT

Match Funding for US 70/270 Bypass (MLK Expressway) Extension to Highway 7

We are working here in Garland County to formulate an effort to take before the voters to extend a current 5/8 cents sales tax to provide local match funding for the above project. We have a committee that meets monthly, working with the West Central Arkansas Planning & Development District staff, to determine the issues we wish to address and to devise the strategy to present to the voters.

The primary election date for the above project is currently set for March. This affects our effort as we need to have the tax vote on a ballot other than the state-wide primary date. Now that the primary election is possible to run off in April or May, it may be June, July or August before we can have the ballot.

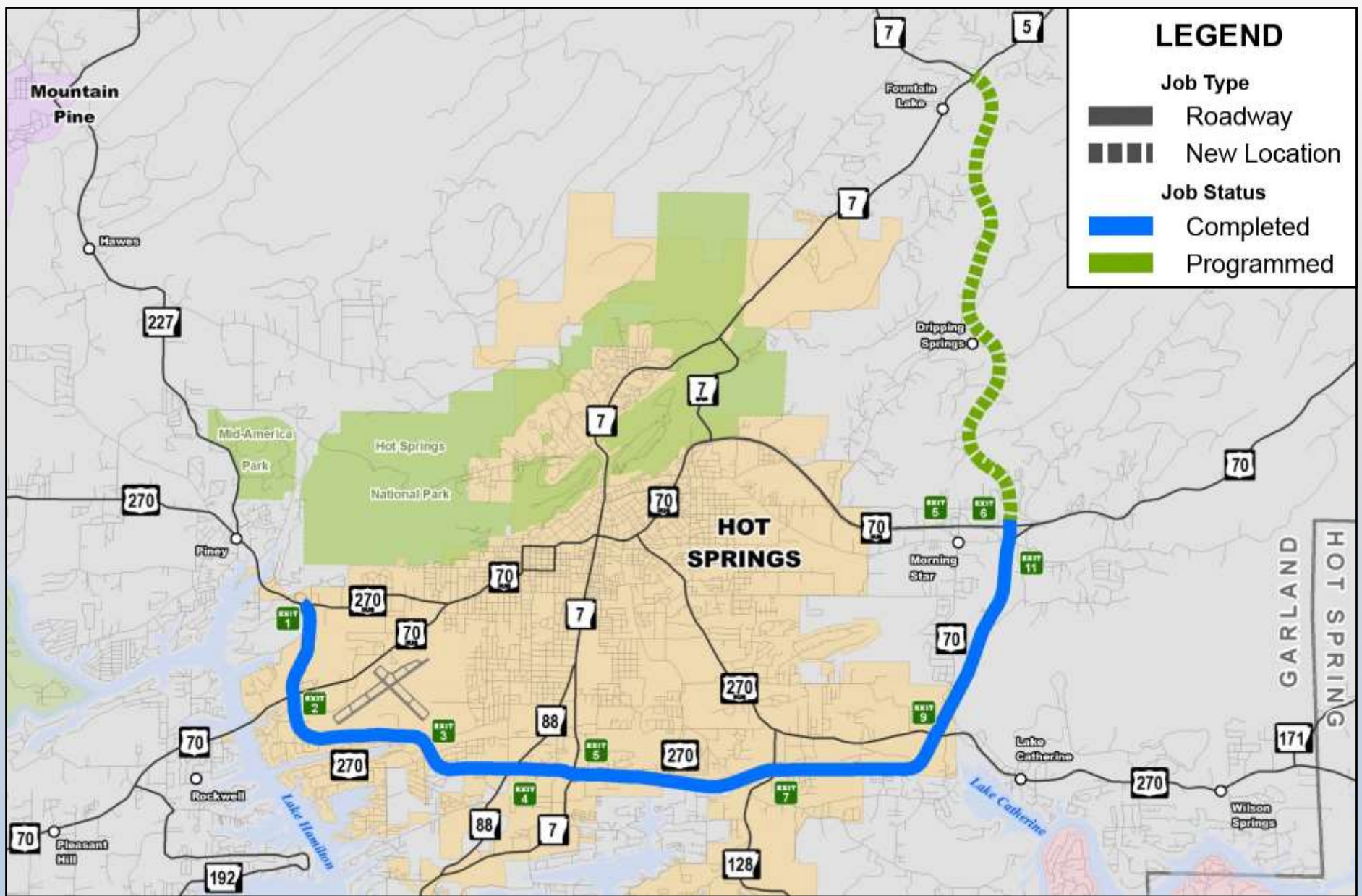
Do you have the latest possible date that you need a firm commitment from the County regarding the commitment of funding for this vital project? We need to know our local share via a county-wide sales tax extension. Do you have an earliest convenience? We are in the process of contacting the County and holding focus groups to determine the public's receptivity towards this project.

501-569-2000  
501-569-2001  
501-569-2002

Wayne Pratt, Executive Director  
Scott Bennett, Director  
Arkansas Highway & Transportation Department  
1000 North Arkansas Street, Little Rock, AR 72203-2261



# MLK Expressway Extension





# Partnering Program

<b>Northwest</b>		<b>Let to Contract</b>	<b>Scheduled</b>	<b>Total</b>
	<b>Projects</b>	23	8	31
	<b>Total Cost</b>	\$217,356,241	\$205,100,342	\$422,456,583
	<b>Local Contribution</b>	\$92,024,268	\$63,408,399	\$155,432,667
	<b>Contribution %</b>			37%
<b>Central</b>		<b>Let to Contract</b>	<b>Scheduled</b>	<b>Total</b>
	<b>Projects</b>	14	2	16
	<b>Total Cost</b>	\$157,811,743	\$27,224,000	\$185,035,743
	<b>Local Contribution</b>	\$45,268,054	\$11,500,00	\$56,768,054
	<b>Contribution %</b>			31%
<b>Other</b>		<b>Let to Contract</b>	<b>Scheduled</b>	<b>Total</b>
	<b>Projects</b>	12	3	15
	<b>Total Cost</b>	\$100,449,334	\$64,815,119	\$165,264,453
	<b>Local Contribution</b>	\$21,459,432	\$12,839,184	\$34,298,616
	<b>Contribution %</b>			21%



# Partnering Program

- Hot Springs Partnering Projects
  - ✓ Highway 88 (Higdon Ferry Road)
    - Highway 7 South – Highway 7 North

Partner	Number of Projects	Total Project Cost	Total Local Contribution	Contribution Percent
Bentonville	6	\$97,171,989	\$67,253,677	69%
Rogers	5	\$52,624,526	\$28,776,050	55%
Springdale	4	\$63,565,655	\$23,839,925	38%
Fayetteville	9	\$146,008,819	\$23,605,221	16%
Conway	3	\$45,764,550	\$20,039,190	44%
Cabot	2	\$22,932,315	\$9,858,723	43%
Hot Springs	4	\$25,748,021	\$8,231,531	32%
Fort Smith	2	\$14,608,989	\$7,329,901	50%
Siloam Springs	2	\$16,254,223	\$2,900,000	18%



# Partnering Program

- **11 Committed Partnering Projects**
  - ✓ \$215 Million Total
  - ✓ \$55 Million Local Contribution
  - ✓ 25% Local
  
- **13 Potential Partnering Projects**
  - ✓ \$138 Million Total
  - ✓ \$59 Million Local Contribution
  - ✓ 43% Local





# Draft 2016-2020 STIP

- █ IRP
- █ CAP
- Bridge Preservation
- █ Safety
- █ Pavement Preservation
- █ Capital Improvement
- █ Capacity Improvement



### LEGEND

Job Type

- Bridge
- ◆ Interchange
- ⊕ Intersection
- ▬ Roadway
- ◆◆◆◆ New Location





# Interstate 30



- US Highway 70 to Sevier Street
- Widening - 5.24 Miles
- \$100-120 Million





# U.S. Highway 70



- Hot Springs to Interstate 30
- Widening - 18.9 Miles
- \$75-100 Million





# U.S. Highway 270

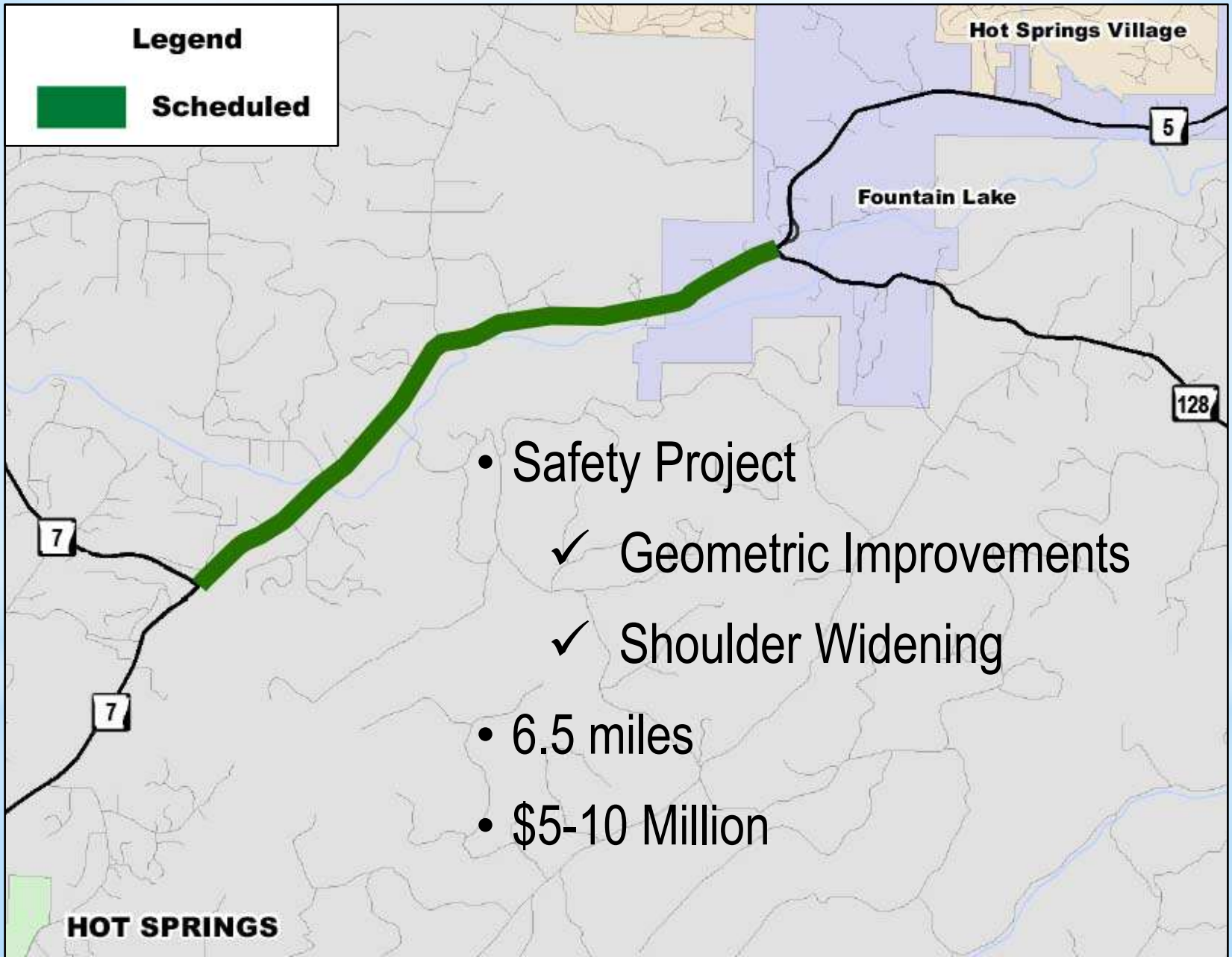


Termini	Type Work	Length (miles)	Amt (x \$1 M)	Date
Montgomery Co. Ln. - East (Sel. Secs.)	Resurfacing	3.82	\$ 2.5	2019
West of Hwy. 227 - Royal (Sel. Secs.)	Resurfacing	1.67	\$ 1.1	2018
Ouachita River - Black Snake Rd.	Widening	1.89	\$ 11.1	TBD
Black Snake Rd. - Hwy. 227	Widening	1.49	\$ 10.0	2017
Hwy. 70 - Hwy. 7 (Hot Springs)	Resurfacing	3.70	\$ 1.9	2019
	Total	12.57	\$ 26.6	





# State Highway 5



## Legend

 **Scheduled**

- Safety Project
  - ✓ Geometric Improvements
  - ✓ Shoulder Widening
- 6.5 miles
- \$5-10 Million

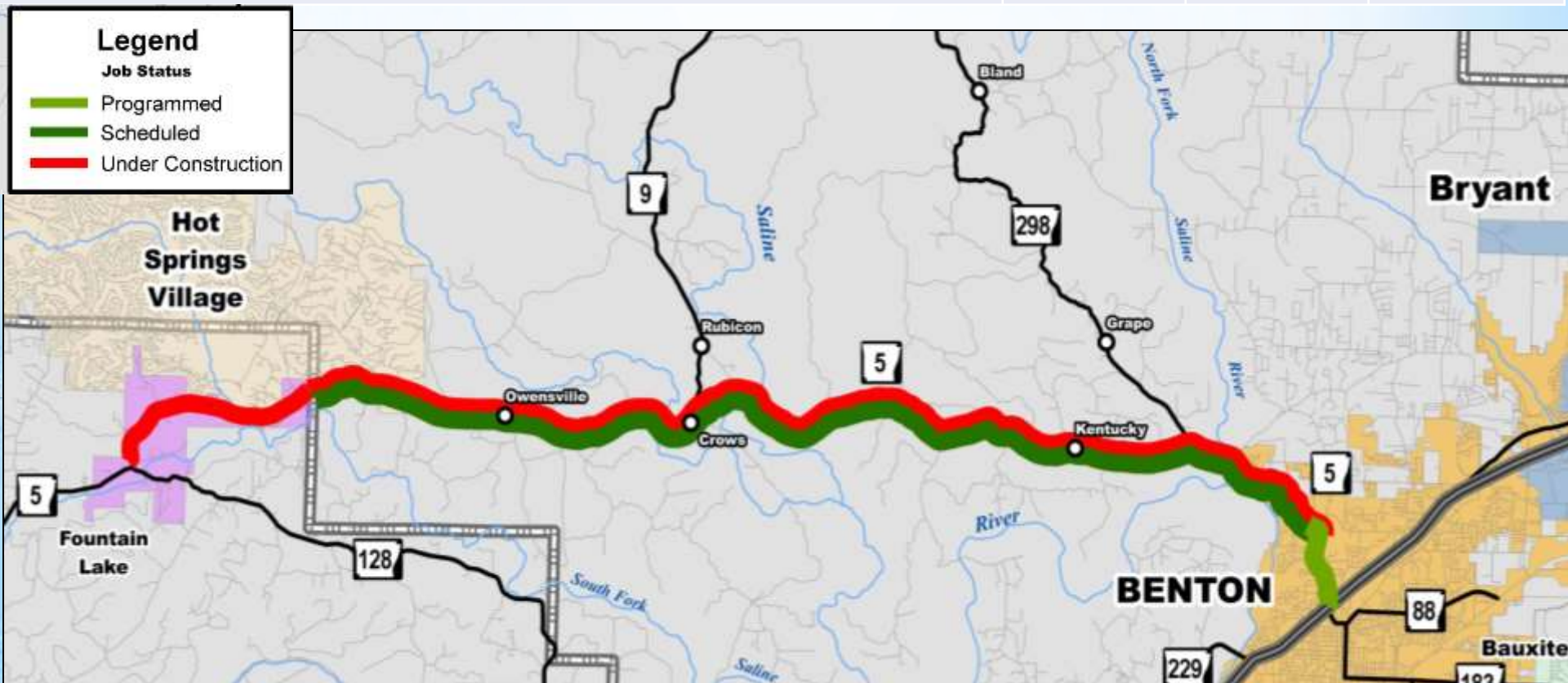
**HOT SPRINGS**



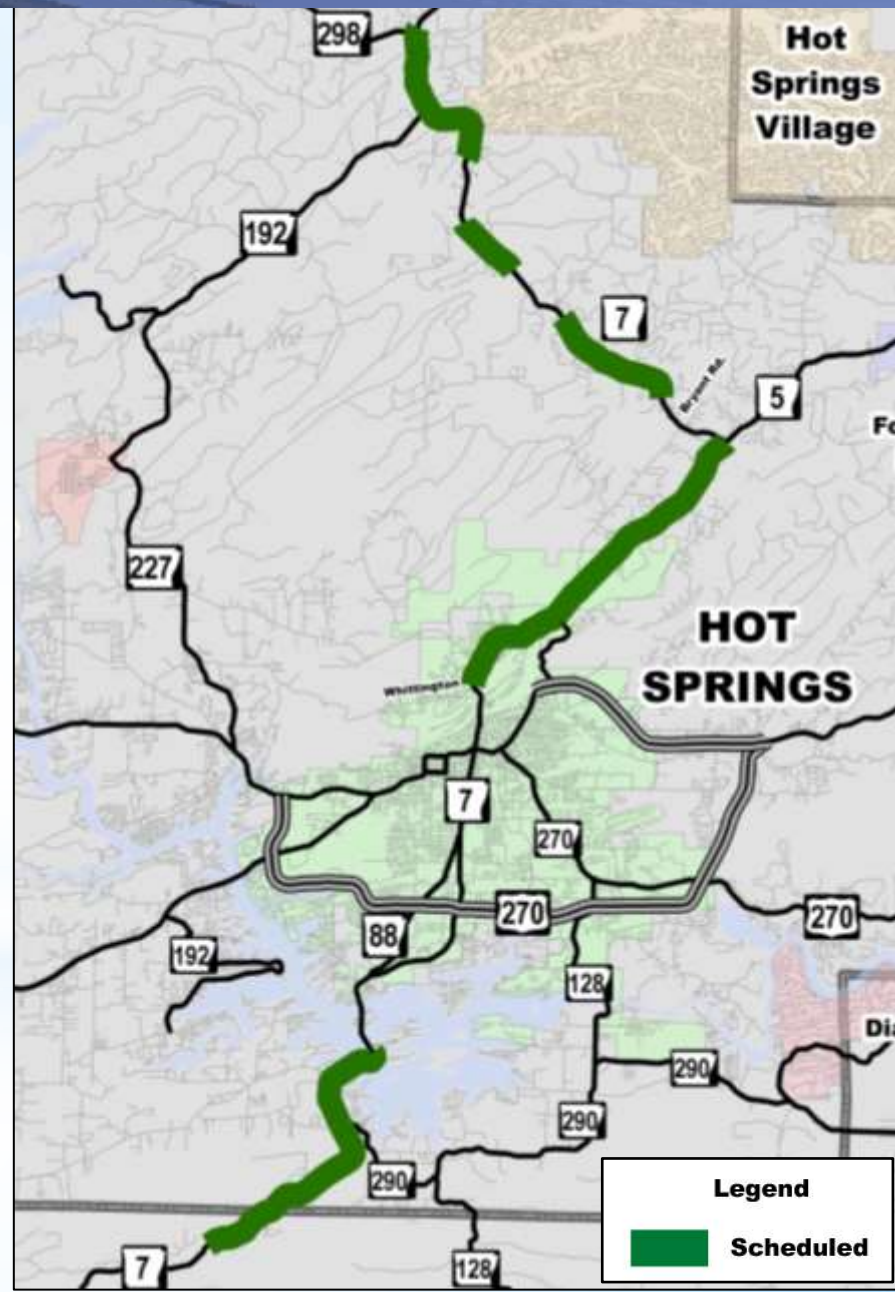
# State Highway 5



Termini	Type Work	Length (miles)	Amt (x \$1 M)	Date Sched/Let
Hwy. 128 - Benton	Safety	20.9	\$ 7.9	2/2016
Garland Co. Ln. - Benton (Sel. Secs.)	Safety	-	\$ 2.0	2017
Salt Creek Road - Benton	Widening	1.4	\$ 8.7	TBD
	Total	22.3	\$18.6	



- Mitzi Parkway to Highway 290
  - ✓ Center Turn Lane
  - ✓ Replace Sorrels Creek Bridge
  - ✓ 3.8 miles / \$10-15 Million
  
- Highway 290 to Ouachita River Bridge
  - ✓ Widening to 5 lanes
  - ✓ 1.7 miles / \$10-15 Million





# State Highway 7

7

- Hot Springs to Highway 5 (Phase I)
  - ✓ Capacity/Safety Improvements
  - ✓ 6.2 miles / \$10 Million
- Bryant Road to Highway 298 W
  - ✓ Capacity/Safety Improvements
  - ✓ 6.3 miles / \$10-15 Million
- Grand Total
  - ✓ 18 miles / \$40-55 Million

