

# Alec Farmer

## Arkansas Highway Commissioner



**Jonesboro Kiwanis Club**  
Wednesday, November 9, 2016

# AHTD & AHC



# History



# Prior to 1913

*“We are always yapping about the ‘Good Old Days’ and how we look away back and enjoy it, but I tell you there is a lot of hoey to it.”*

– Will Rogers



<http://rustlingsinthewind.blogspot.com>



# The Teens

- ***First Commission Created***
  - ✓ ***No Highway Department***
  - ✓ ***No Highway System***
- ***\$72,000 Total Budget***
- ***36,000 Miles of Public Roads***

Highway 71 near Bella Vista



# The Twenties



Repair Shop of State  
Highway Department,  
Little Rock, early 1930s



- **Highway System Created**

Highway Districts 1923



- **Highway Department Created**

- **First Gas Tax – 1 cent per gallon**

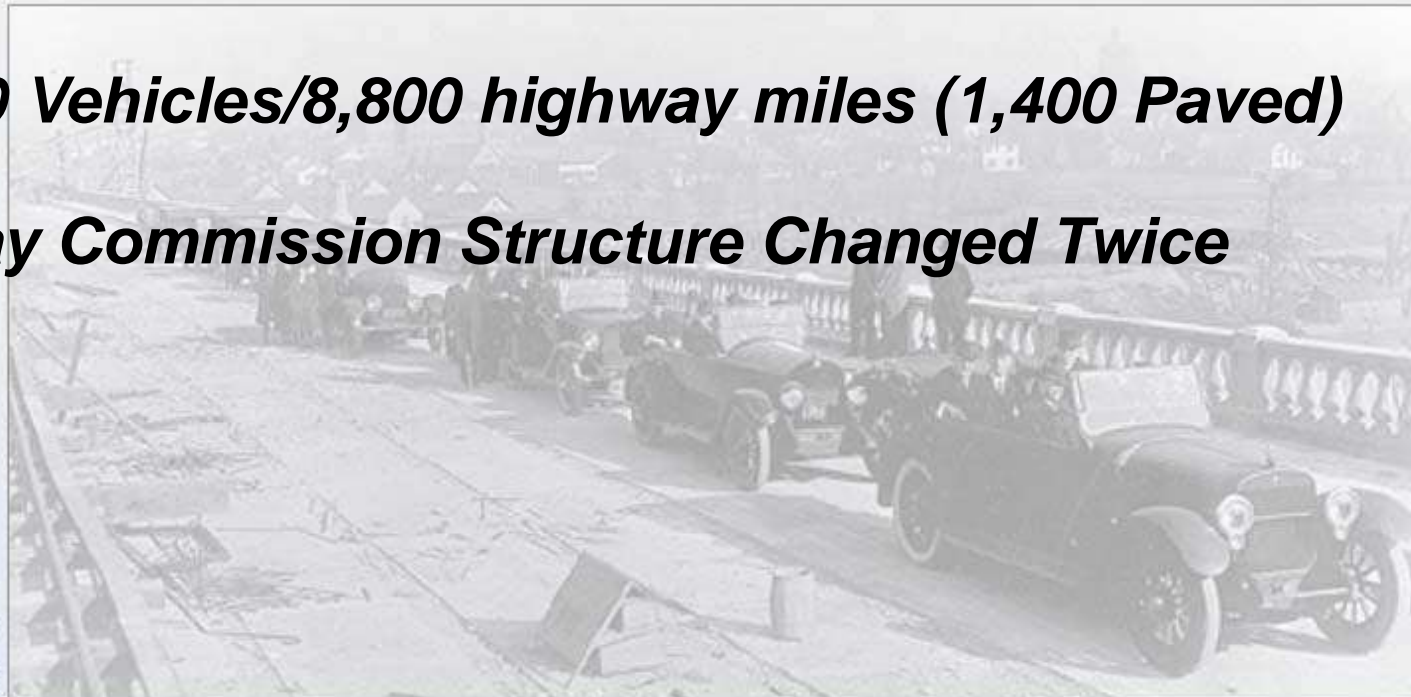
- **200,000 Vehicles/8,800 highway miles (1,400 Paved)**

Highway Districts 1925



- **Highway Commission Structure Changed Twice**

Broadway Bridge dedication,  
1922. View is looking towards  
North Little Rock





# The Thirties and Forties



Operation of the Henderson Ferry at Norfolk Lake cost

\$117,981 for 1947-48.

During this period 189,856 vehicles were

ferried over at an average cost of \$0.62

per vehicle.

- **Gas Tax Raised to 6.5 cents per Gallon**

- ✓ **1960's Before Next Increase**

- **9,700 Highway Miles (4,900 Paved)**

- **Commission Structure Changed Four More Times**

- **Too much Political Influence on Highways**  
– **Growing Discontent**



Magnet Truck, Picked up an average of 20 lbs of metal per mile



# The Fifties



- **1951 - Highway Audit Commission Report**

- ✓ **“the advice, counsel and expert know-how which is available from the Department’s own technical and administrative staffs has scant weight indeed when they are in conflict with the political pressures and political promises of the moment.”**

- **9 Legislative Acts Restructured Commission since 1913**
- **1952 – Mack Blackwell Amendment**

Widening Hwy 67 near Malvern, 1956





# The Sixties and Seventies

- ***No changes to Commission Structure***
- ***Department became Debt Free***



- ***Legislature transferred nearly 4,400 more miles of County Roads to Highway System***

South Terminal, Lawrence Blackwell burning bonds at a ceremony in 1975.

- ***Department adds "Transportation" to its name – Authority Expanded***

- ***1<sup>st</sup> State to Complete its Interstate System (1975)***
- ***16,000 Highway Miles (15,000 Paved)***



Toad Suck Ferry on Arkansas River at Highway 60, 1970



I-430 River Bridge, 1973





# The Eighties and Nineties

- **1985 – Rural Road Program – out of the mud**
- **Early Retirements – huge workforce turnover**
- **1991 – Highway Improvement Program**
- **1993 – Last Federal Gas Tax Increase**



Section of Hwy 7  
named first Scenic  
Byway of Arkansas.

- **1999 – Last State Gas Tax Increase**

1991 Highway Improvement Program authorized to  
improve or replace approximately 560 bridges.

- **1999 – Interstate Rehabilitation Program –  
First Highway Bond Issue in 50 years**

- **I-540 (now I-49) and I-530 Completed**

- **16,400 Highway Miles**

Hopper Tunnel, 1999





# The New Millennium



- **2011 – 2<sup>nd</sup> Interstate Rehabilitation Program**
- **2012 – Connecting Arkansas Program**



Winter Weather in Dec 2000 and  
Jan 2001 cost almost \$40 M.

- **Governor's Working Group on Highway Funding**

- **16,400 miles State Highways**



New White River  
Bridge on Hwy 64  
at Augusta opened  
in 2001.



# Today and



# Tomorrow



# Matters of Scale

1111 S Caraway Rd, Jonesboro, AR

1111 S Caraway Rd  
Jonesboro, AR 72401

Directions

SAVE NEARBY SEND TO YOUR PHONE SHARE

Add a missing place  
Add a label

At this location

**Barnhill's Buffet**  
3.8 ★★★★★ (37)  
Restaurant · 5 Caraway Rd  
Open until 9:00 PM

1111 South Caraway Road

Jonesboro Country Club

The Mall at Turtle Creek

NETTLETON

Nettleton High School

Hilton Garden Inn Jonesboro

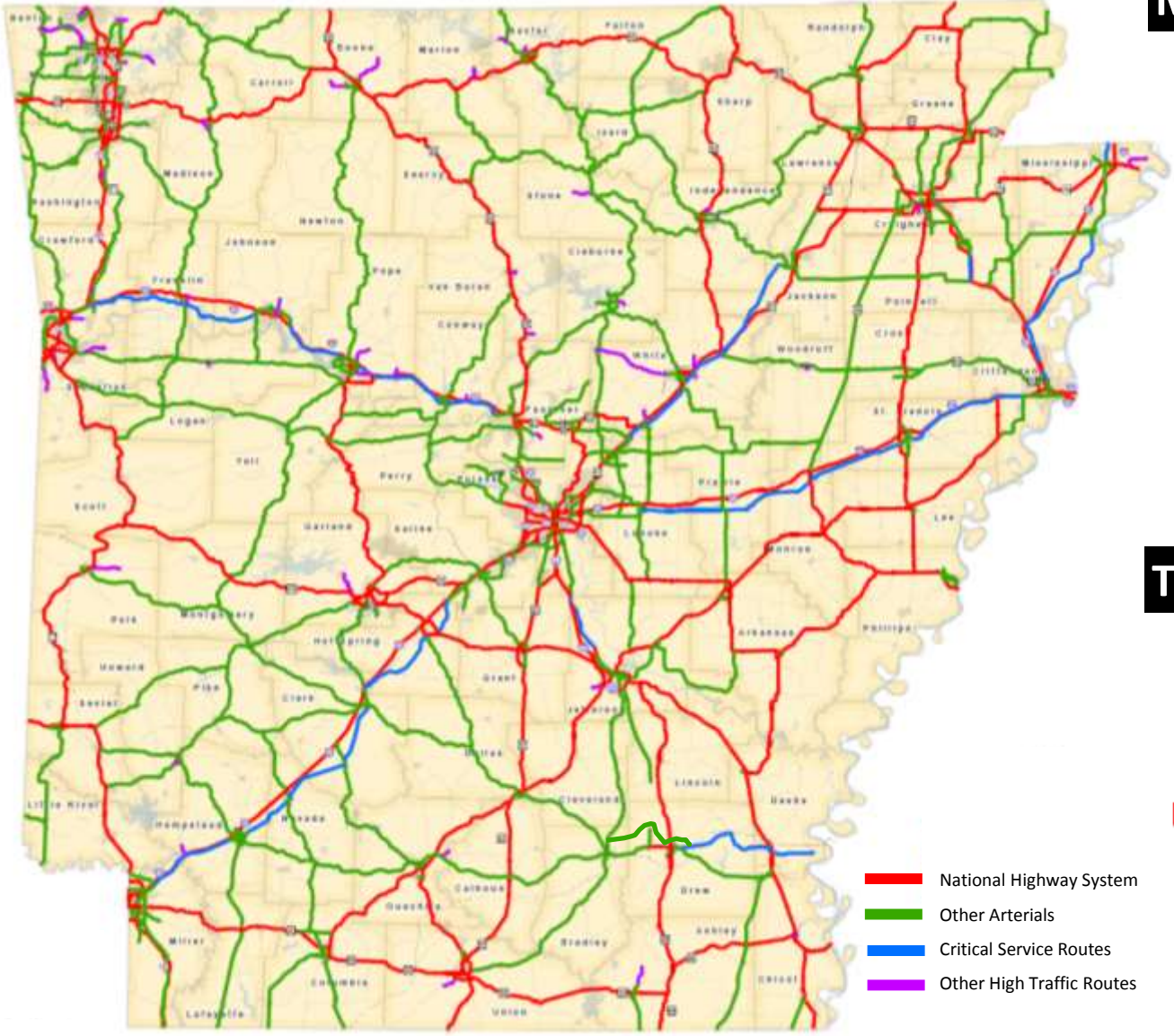
555

Google

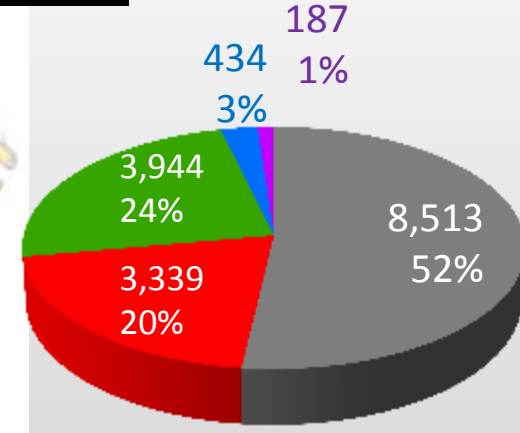


# All of the APHN

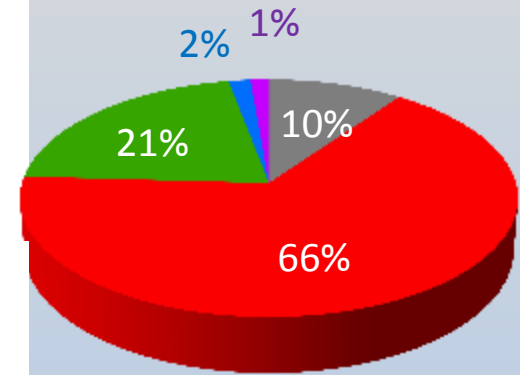
Arkansas Primary Highway Network



## Miles



## Traffic



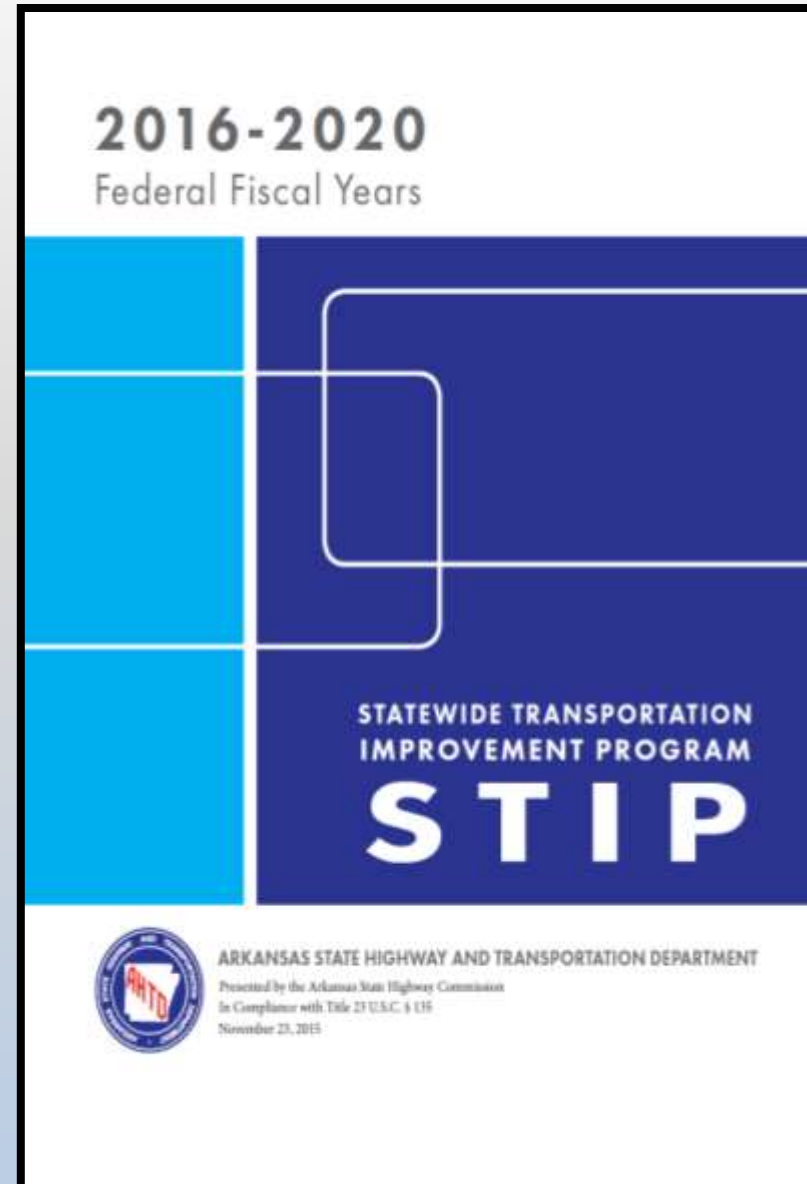


# Four Lane Grid

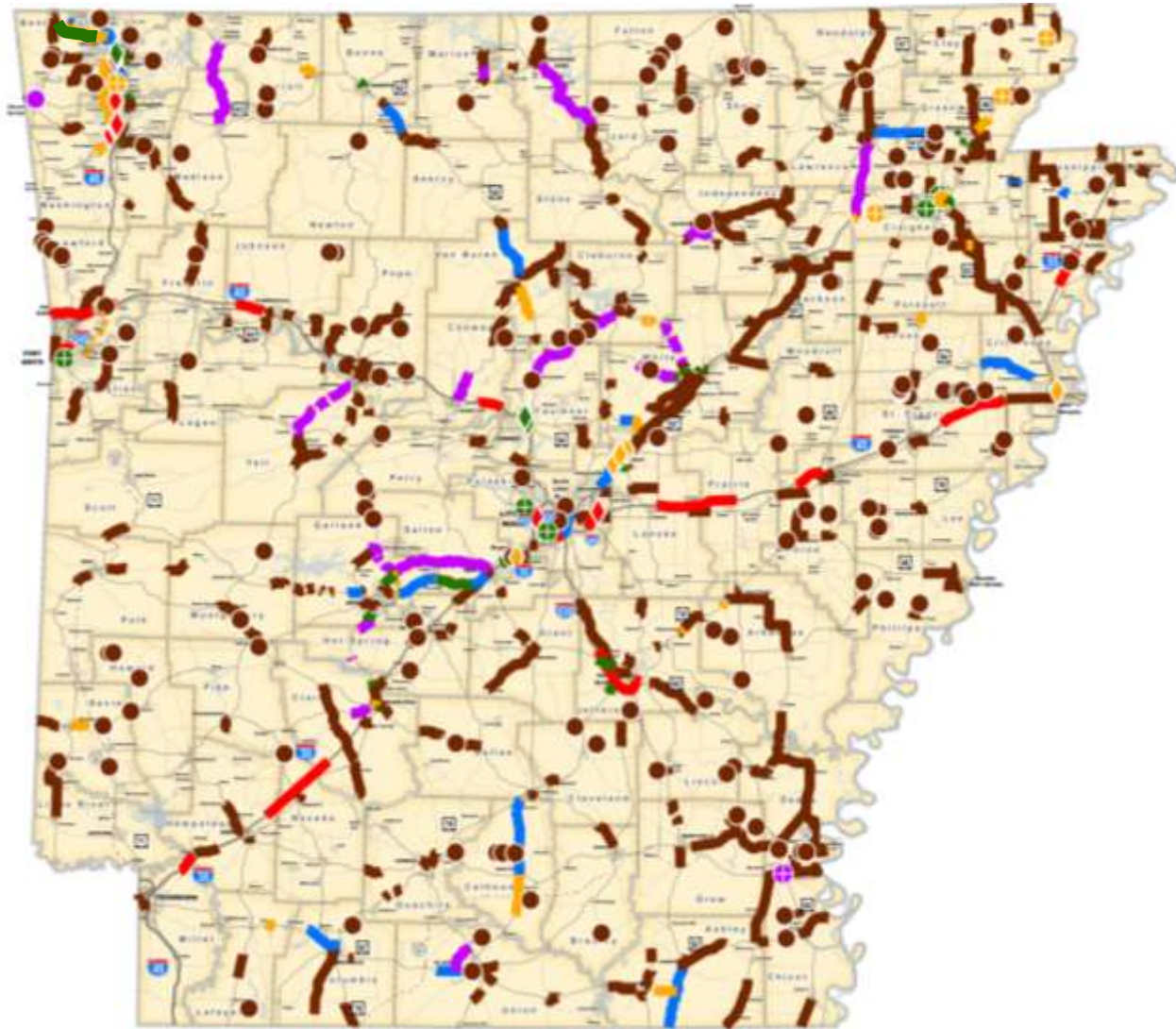


# Statewide Transportation Improvement Program for Federal Fiscal Years 2016-2020 (STIP)

- Federal Requirement for Federally Funded and Regionally Significant Transportation and Transit Projects
- 4-Year Minimum
- Required Components:
  - ✓ Demonstration of Financial Constraint
  - ✓ Metropolitan Planning Organization (MPO) Coordination
  - ✓ Public Involvement
  - ✓ Performance Management



# Draft 2016-2020 STIP



### LEGEND

#### Job Type

- Bridge
- ◆ Interchange
- ⊕ Intersection
- ▬ Roadway
- New Location

- IRP
- CAP
- Bridge Preservation
- Safety
- Pavement Preservation
- Capital Improvement
- Capacity Improvement





# Regional Projects





# Interstate 555



## Bridge Maintenance and System Preservation

- Selected sections of I-555 from I-55 to Jonesboro
- Just under 39 miles
- Estimated between \$45 and \$50 Million





# U.S. Highway 67



## System Preservation from Cabot to Newport

- Selected sections of U.S. Highway 67 from Cabot to Newport
- Just under 59 miles
- Estimated between \$65 and \$70 Million





# State Highway 18



## Recently Completed

- 7.1 miles
- \$23 million

## Under Construction

- 14.2 miles
- \$45.3 million

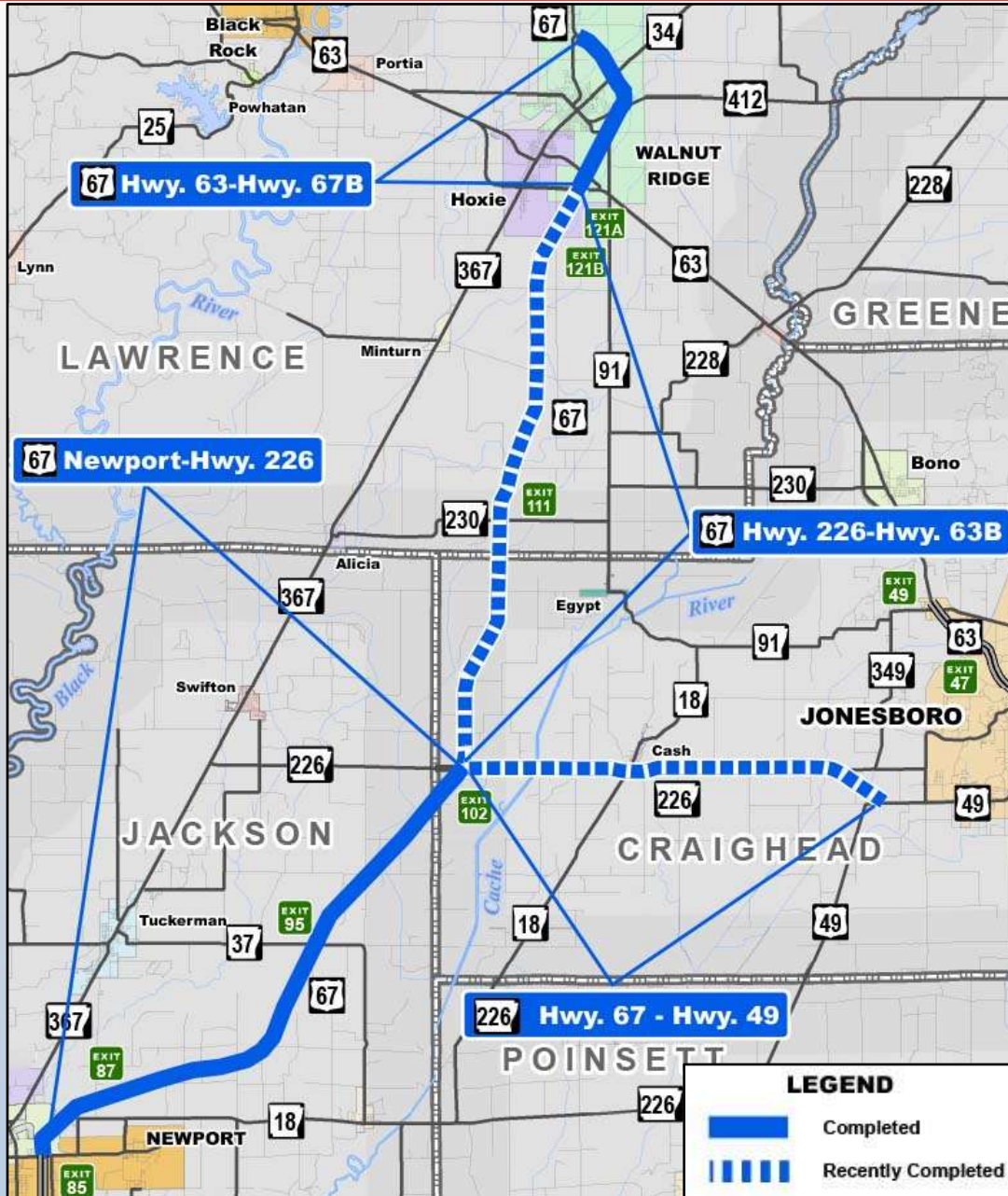
## Scheduled

- 2.4 miles
- \$35-40 million





# U.S. Hwy 67 & State Hwy 226



# Jonesboro & Craighead County



## Projects in the Future



# State Highway 1-B



## Programmed

- 3.1 miles
- \$1.8 million





# State Highway 18



**Programmed**

➤ **\$14.5 million**



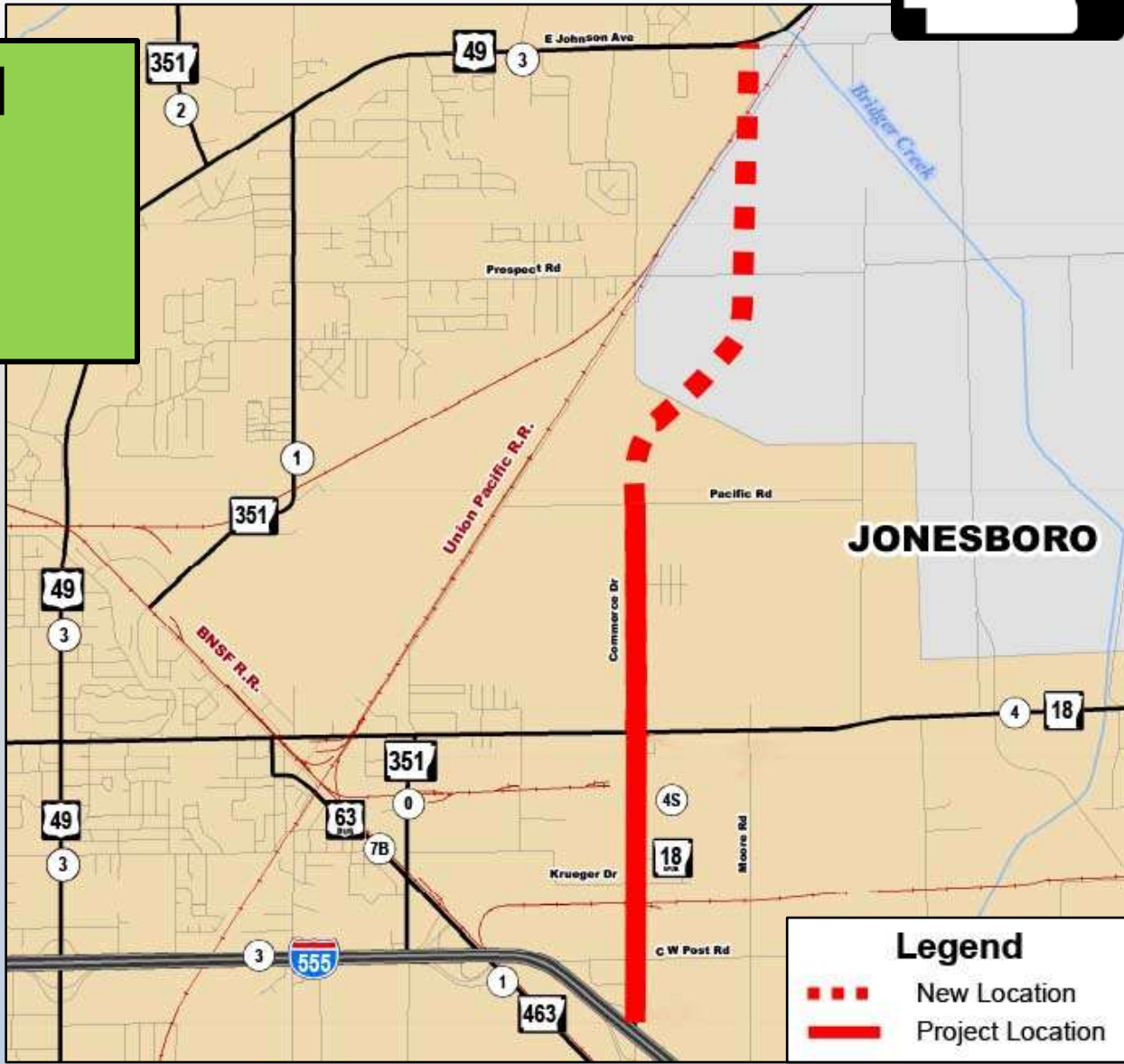


# State Highway 18S



**Programmed**

- 4.34 miles
- \$5-10 million





# U.S. Highway 49



**Programmed**

➤ **\$9 million**



# U.S. Highway 49



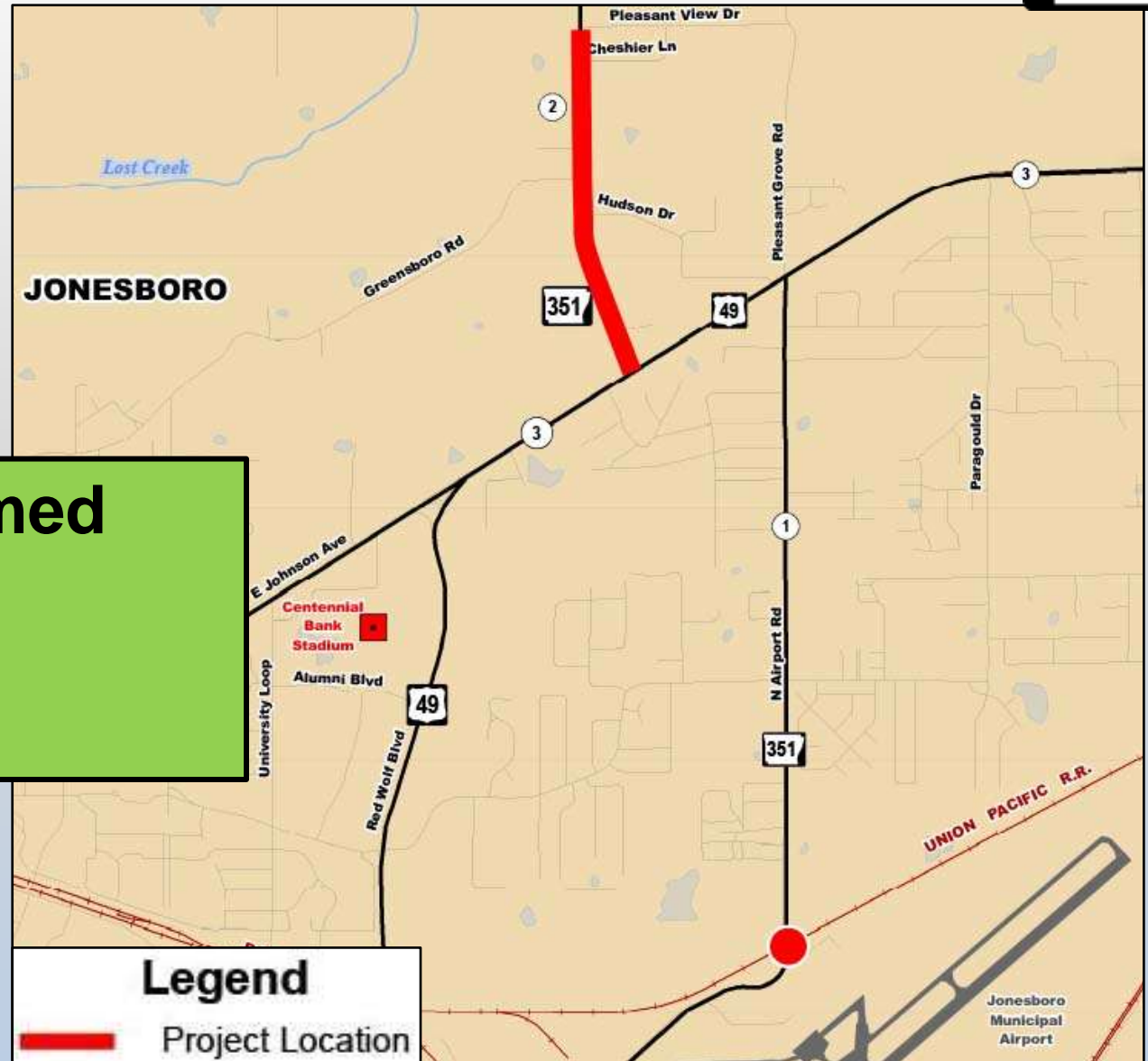
## Programmed

- 1.35 miles
- \$20.4 million





# State Highway 351




## Programmed

➤ 0.9 miles

➤ \$14 million

### Legend

 Project Location

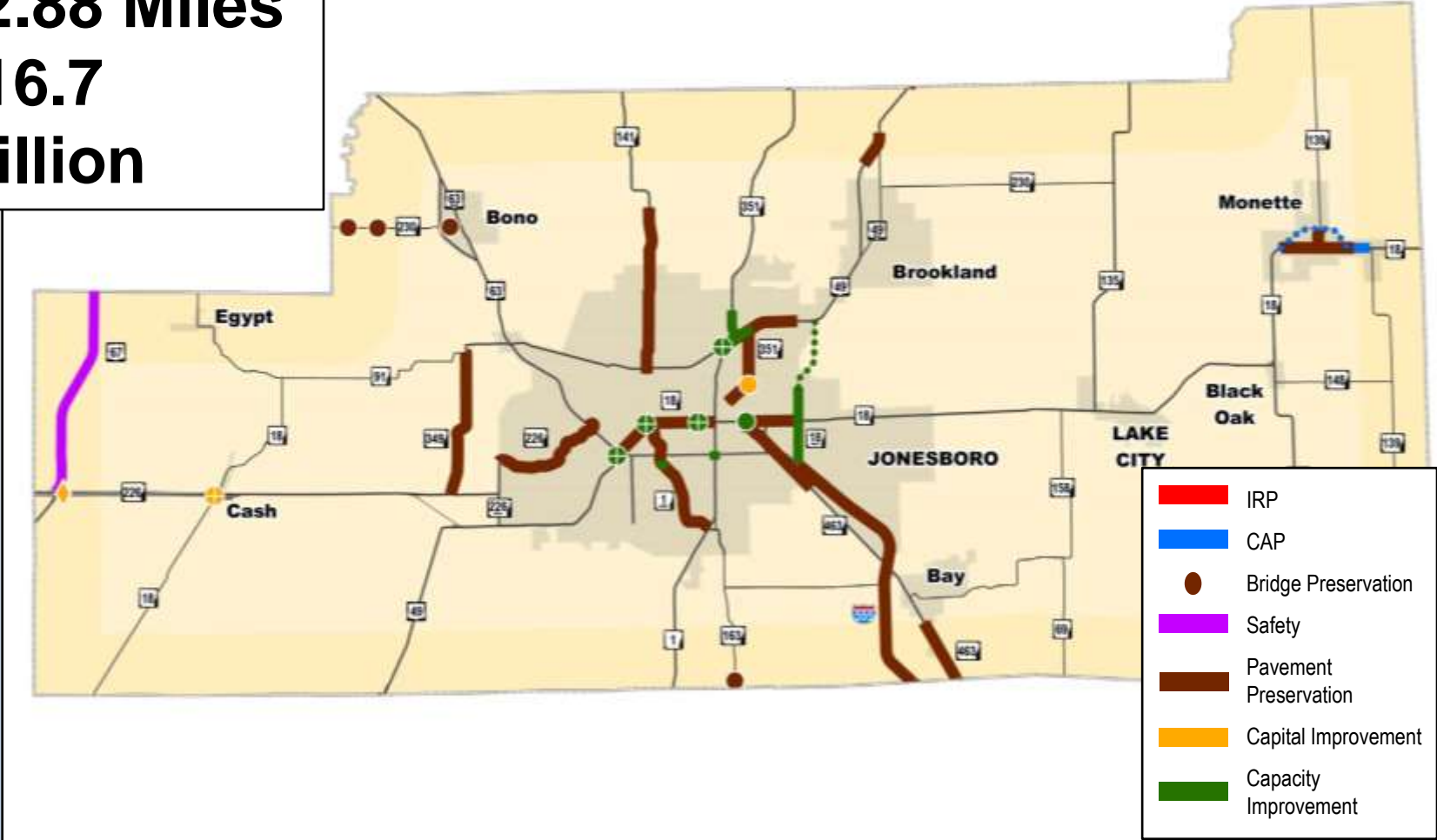


# Craighead System Preservation



## 14 Projects

- 32.88 Miles
- \$16.7 Million

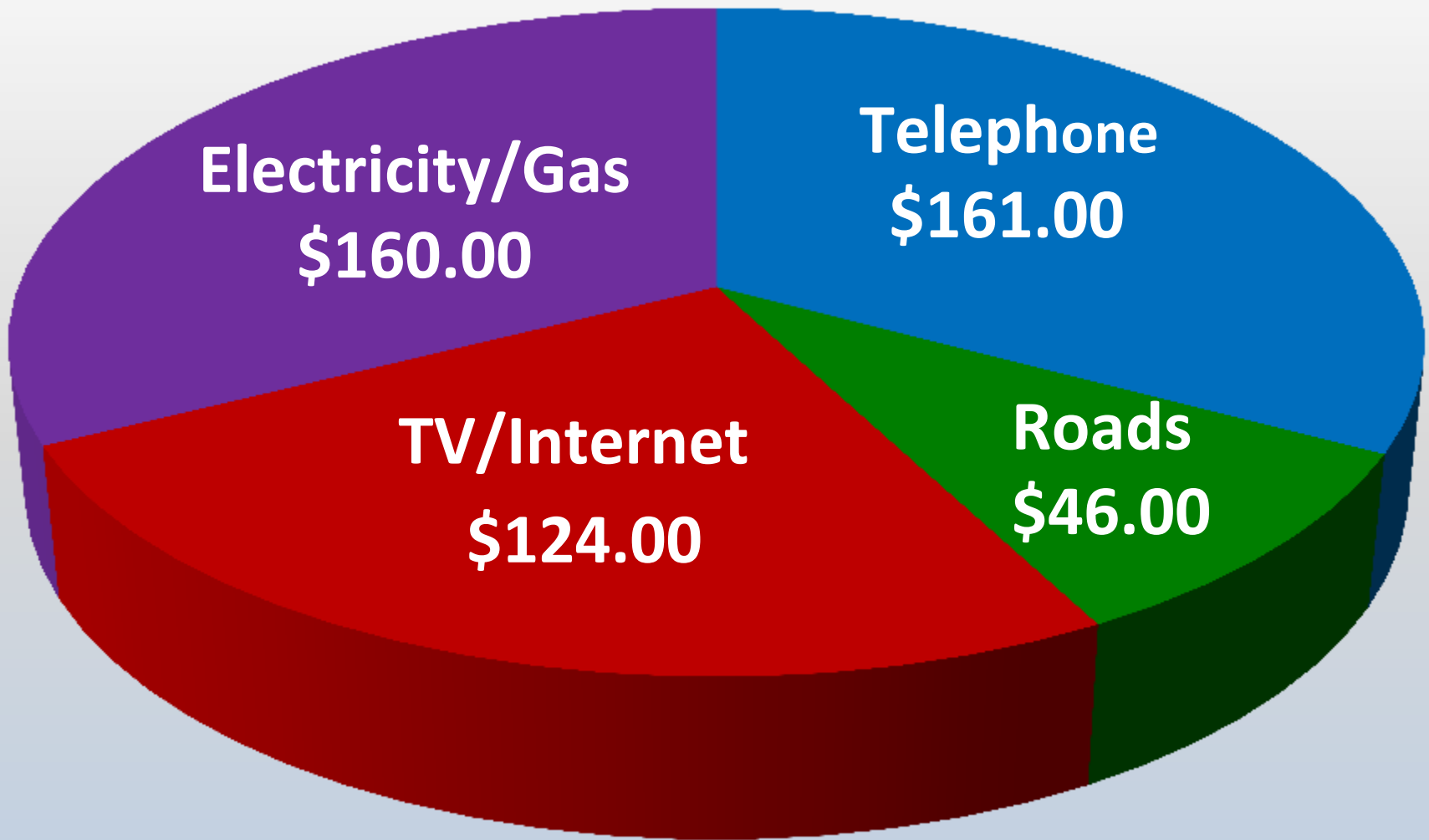


# Funding

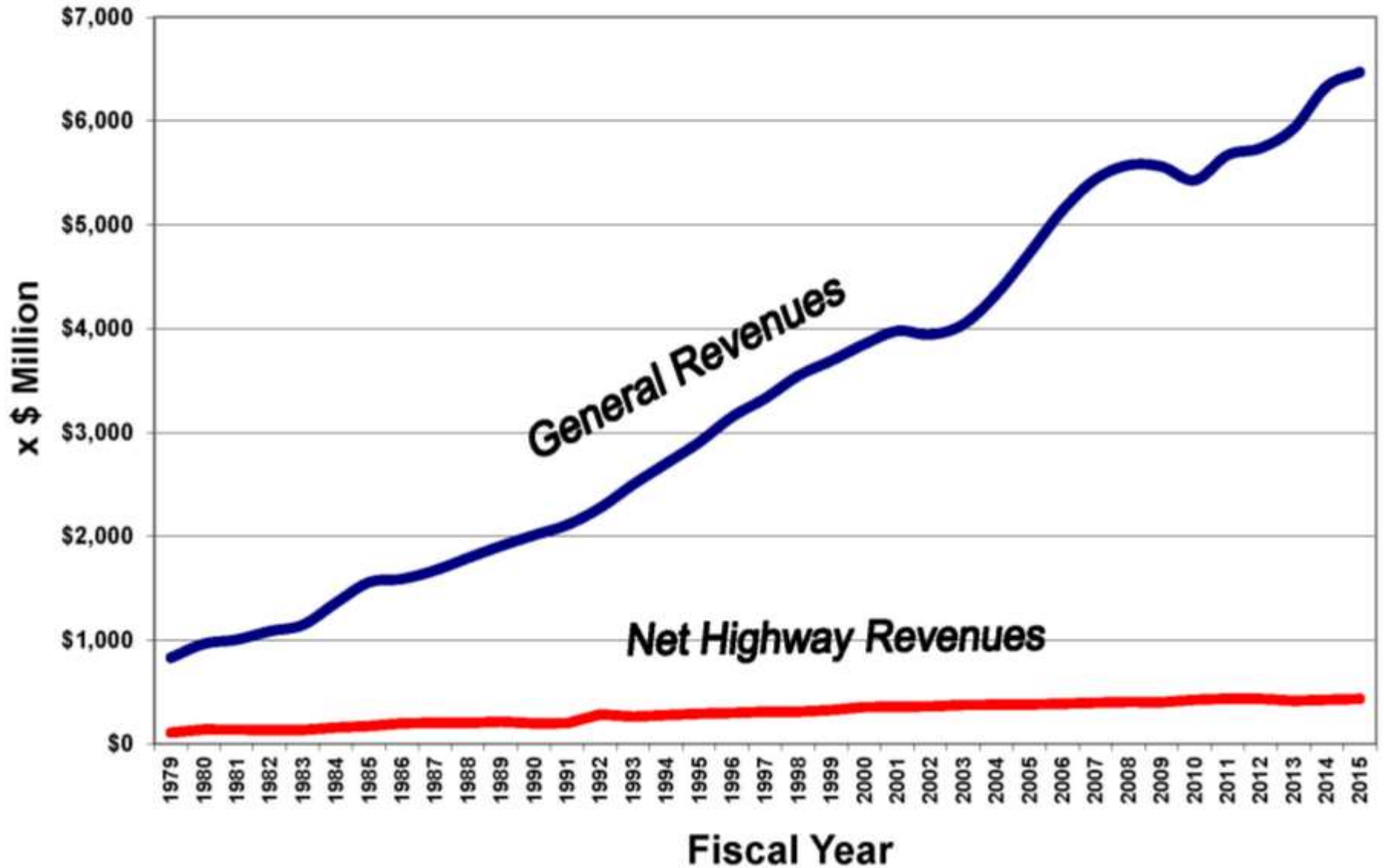




# Average Monthly Household Expenditures



# Arkansas State General Revenues vs AHTD Net Highway Revenues

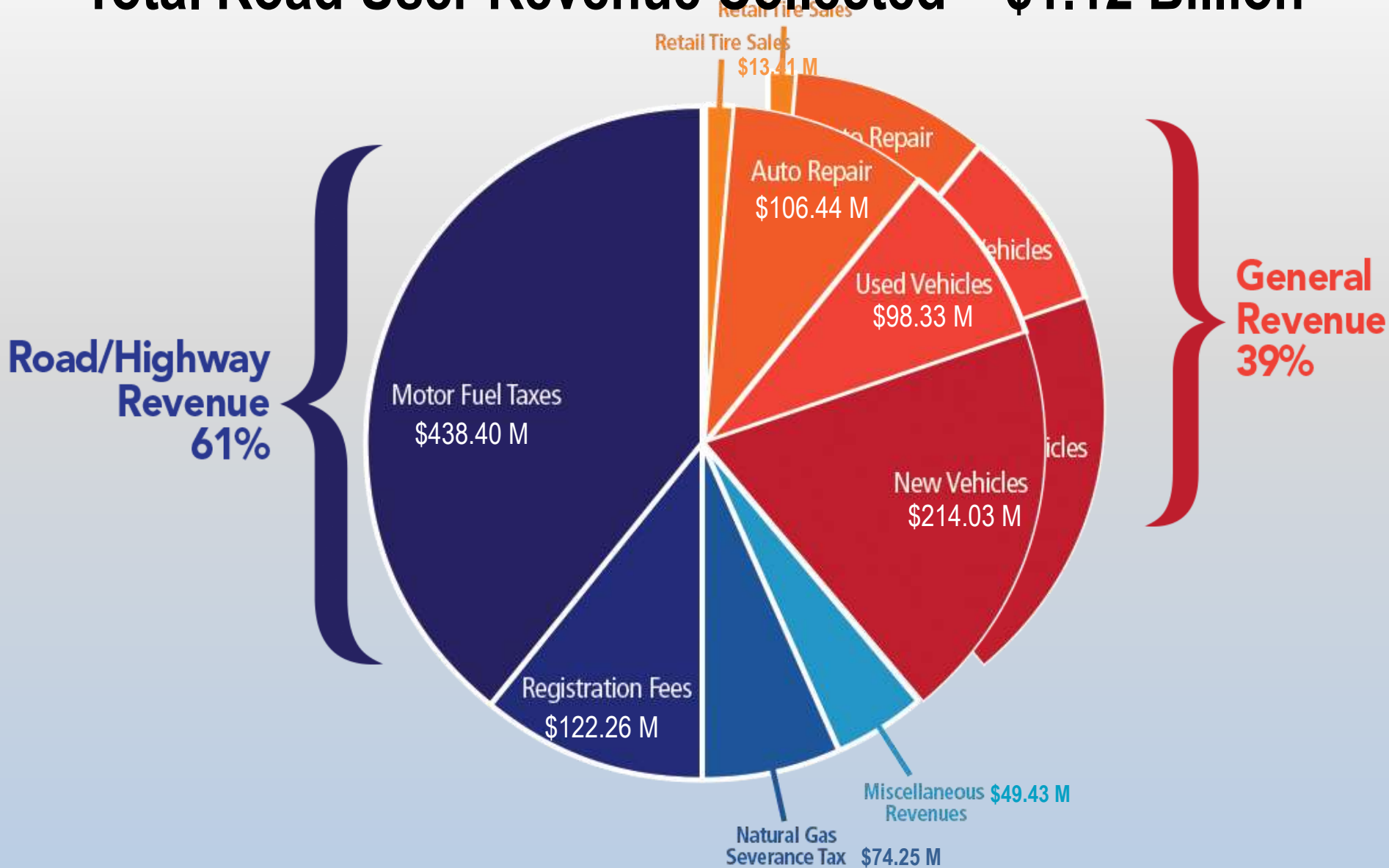






# 2015 Road User Related Tax Revenue

## Total Road User Revenue Collected = \$1.12 Billion

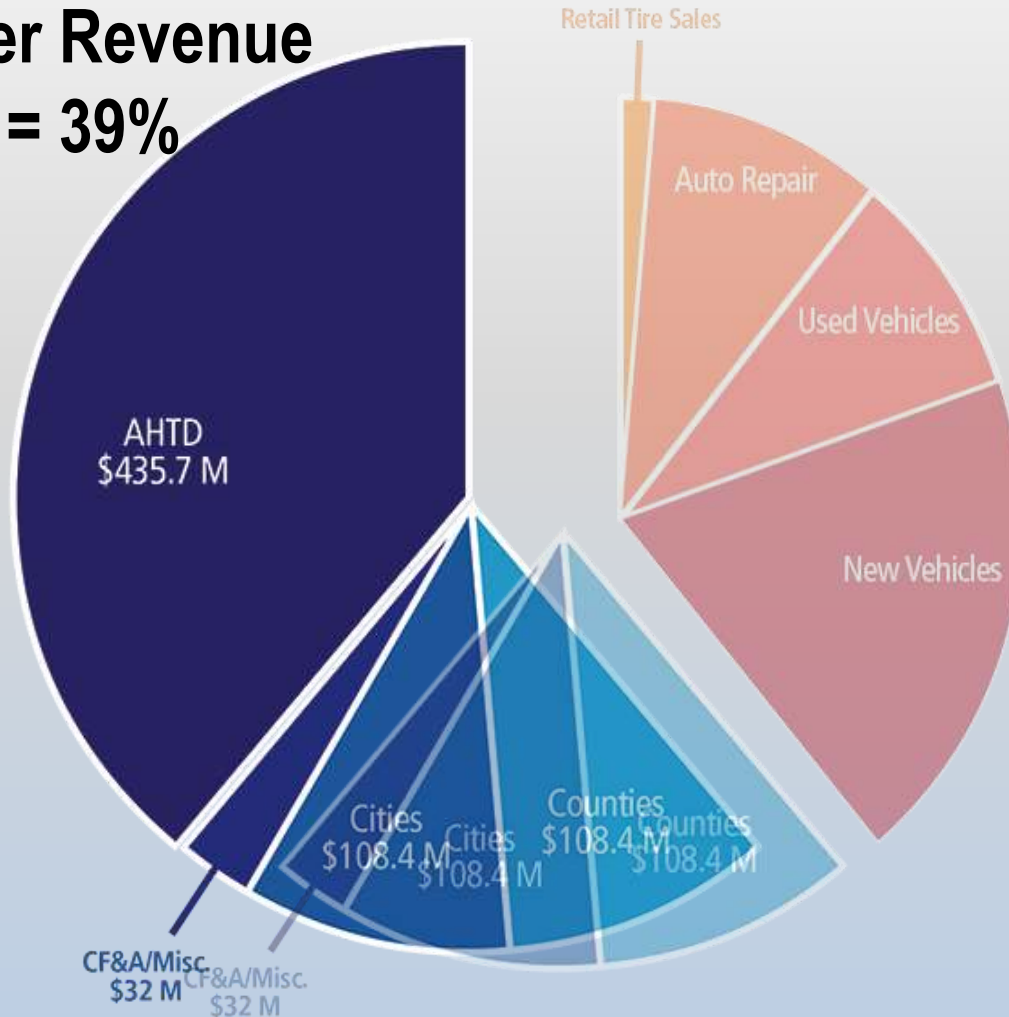




# 2015 Road User Related Tax Revenue

## Total Road User Revenue Collected = \$1.12 Billion

**AHTD Road User Revenue  
= \$435.7 M = 39%**





- [ArkansasHighways.com](http://ArkansasHighways.com)
- [ConnectingArkansasProgram.com](http://ConnectingArkansasProgram.com)
- [Vimeo.com/AHTD](http://Vimeo.com/AHTD)
- [IDriveArkansas.com](http://IDriveArkansas.com)
- [Twitter.com @AHTD](https://twitter.com/AHTD)



@AHTD



# Questions?

