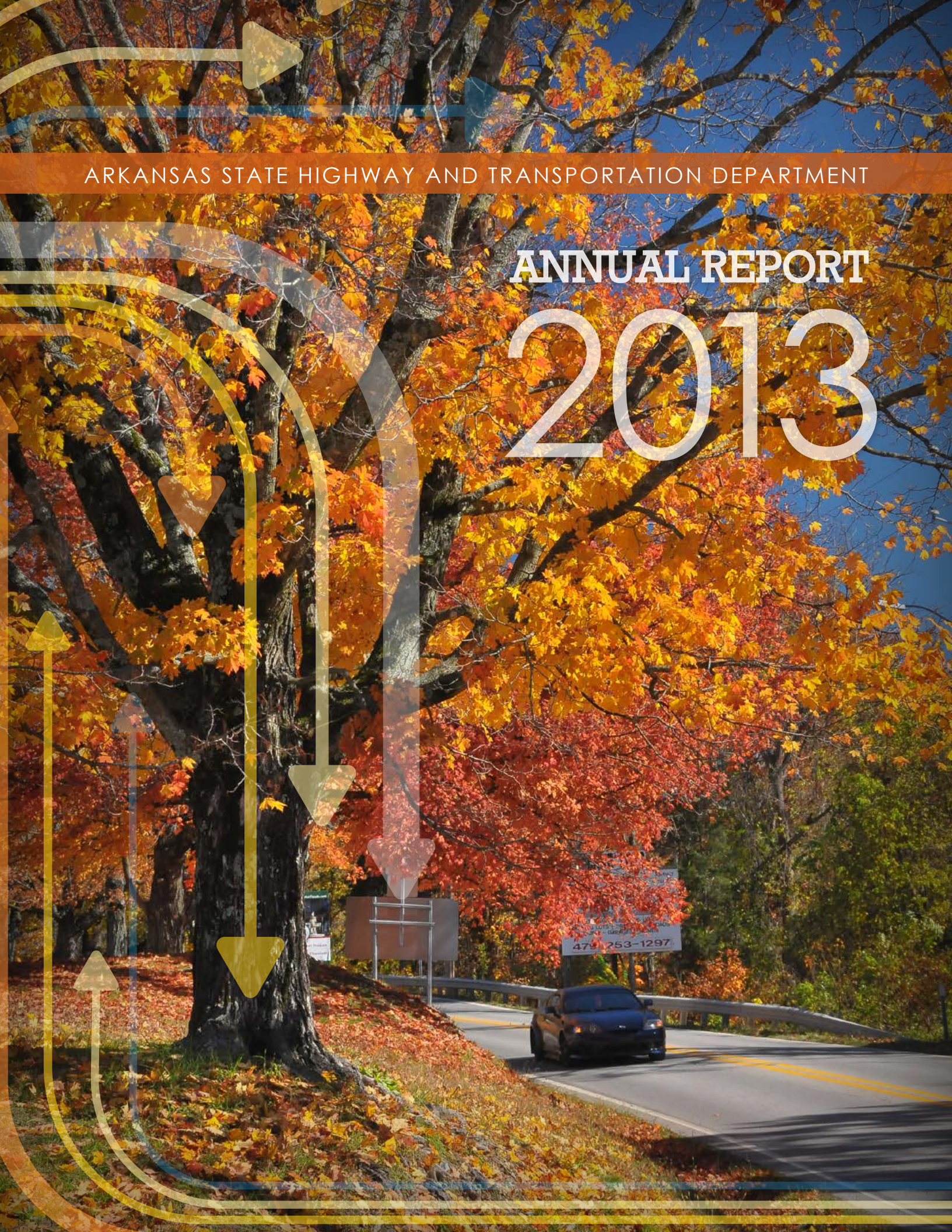


ARKANSAS STATE HIGHWAY AND TRANSPORTATION DEPARTMENT

ANNUAL REPORT 2013

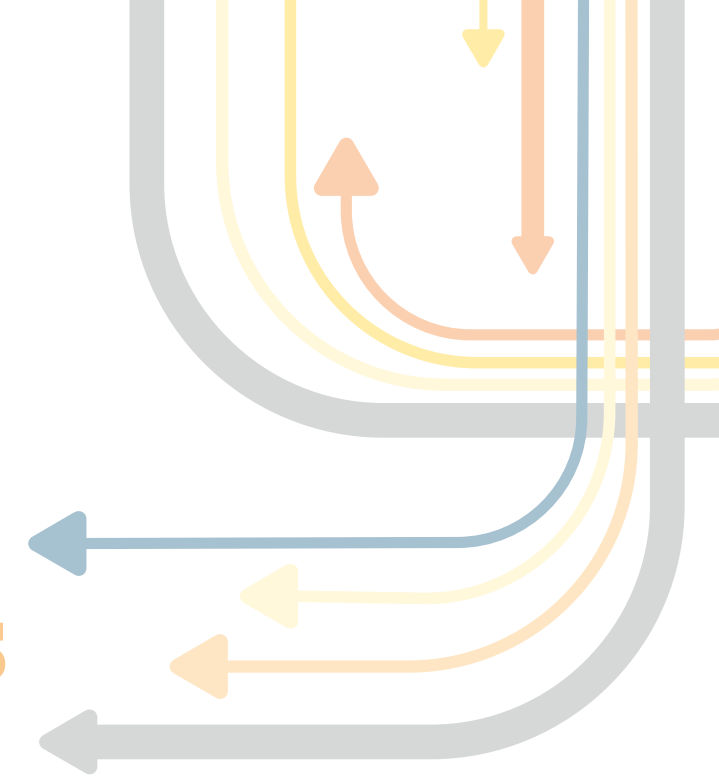


479 253-1297



FRONT & BACK COVER PHOTOS:
Fall color along Highway 62
Carroll County • November 2013
Photography by John Jackson

TABLE OF CONTENTS



DIRECTOR'S MESSAGE	4
ARKANSAS STATE HIGHWAY COMMISSION	6
CONSTRUCTION HIGHLIGHTS	8
GROUNDBREAKINGS & RIBBON CUTTINGS	12
NEW IN 2013	14
RECOGNITIONS & ACCOMPLISHMENTS	16
TOP TEN CONTRACTS OF 2013	18
AHTD ORGANIZATION & WORKFORCE	20
PUBLIC INVOLVEMENT	21
DISTRICT INFORMATION	22

AHTD MISSION STATEMENT

To provide a safe, efficient, aesthetically pleasing and environmentally sound intermodal transportation system for the user.

DIRECTOR'S MESSAGE

SCOTT E. BENNETT
Director



It is with pleasure that the Arkansas State Highway and Transportation Department presents its Annual Report for 2013. Our State Highway Commission and our Department staff accomplished a great deal through their hard work and commitment for the year and we are pleased to share those accomplishments in this report.

We are proud of our portion of the Interstate system here in Arkansas. With just over 650 miles of the nation's Interstate network within our borders, it is imperative to keep those miles in top condition. In 2013, we saw the second phase of our Interstate Rehabilitation Program swing into full gear. Three projects totaling 40 miles have already been completed, eight projects are underway and 64 are scheduled for the future. Once completed, we will have rehabilitated 458 miles of Interstate highway in this phase of the program.

In addition to our Interstate program, our Department staff continued to prepare for our new four-lane highway construction and improvement program titled the Connecting Arkansas Program. The goal is to make significant progress toward connecting all parts of the State with four-lane highways to provide safer

and more efficient travel. Thirty one projects, covering approximately 180 miles of highways, will be improved with an estimated \$1.8 billion investment into the Arkansas highway system. The vision will become clearer in 2014 when construction gets underway.

Overall, the Department let 279 projects to contract totaling approximately \$647 million. The largest was rehabilitation of Interstate 540 in the Fort Smith area. Construction highlights for all ten of our Districts are included within these pages.

This report also brings to the forefront several exciting developments that took place off of our highway system as well. Those can be found immediately following this message and include a new District Headquarters in western Arkansas, new Arkansas Welcome Centers and an exciting new program for our local communities as well.

As always, all of us at the Arkansas State Highway and Transportation Department want to thank the people of Arkansas for their commitment and support in helping us carry out the many programs that are making Arkansas' highway system one we can always be proud of.



A handwritten signature in black ink that reads "Scott E. Bennett".

SCOTT E. BENNETT
Director of Highways and Transportation

2013

HIGHWAY COMMISSION



John Ed Regenold
Chairman

COMMISSION CHAIRMAN JOHN ED REGENOLD, of Armorel, was appointed by Governor Mike Huckabee effective January 26th, 2005. He is a longtime business and civic leader in east Arkansas. Former Governor Huckabee previously appointed Regenold to the Arkansas Economic Development Commission. He is Chairman of the Armorel Planting Company. He is also a member of the St. Francis Levee Board and is a Commissioner for the District 17 Drainage District. He is the former Chairman of the Mississippi County Hospital System Board and a member of the board of the Arkansas Northeastern College Foundation. His term will expire in January of 2015.



Dick Trammel
Vice Chairman

COMMISSION VICE CHAIRMAN DICK TRAMMEL, of Rogers, was appointed by Governor Mike Beebe effective January 12th, 2009. He currently serves as Executive Vice President, member of the Board of Directors and Board Secretary of Arvest Bank in Rogers. He is past President and current member of the Board of the Rogers-Lowell Chamber of Commerce. He has served on the Rogers-Lowell United Way board and twice served as Drive Chairman. Trammel is a past President of the Rotary Club of Rogers and past Governor of Rotary International District 6110. Trammel is a founding Director, Director Emeritus and past Chairman of the Northwest Arkansas Radiation Therapy Institute (NARTI). He is a charter member, past Chairman and past board member of the Board of Trustees of Northwest Arkansas Community College. His term will expire in January of 2019.



Tom Schueck
Commissioner

COMMISSIONER TOM SCHUECK, of Little Rock, was appointed by Governor Mike Beebe effective January 14th, 2011. Schueck has 41 years experience in forming and managing companies that are involved in heavy construction. Among the companies he has founded are Schueck Steel, Custom Metals, Prospect Steel, L-Con Constructors, L-Con Marine Fabricators and Heritage Golf. Schueck has served on the Arkansas Parks, Recreation and Travel Commission, and the Arkansas Pollution Control and Ecology Commission. He is a member of the Little Rock Municipal Airport Commission. He also serves on the boards of The Nature Conservancy, UAMS Foundation and the Arkansas Industrial Development Foundation. His term will expire in January of 2021.



Robert S. Moore, Jr.
Commissioner

COMMISSIONER ROBERT S. MOORE, JR., of Arkansas City, was appointed by Governor Mike Beebe effective January 22nd, 2013. Moore is a three-term member of the Arkansas House of Representatives and has represented the 12th District since 2007. He served as Speaker of the House in 2011 and 2012. He is Owner/Operator of Moore Farms. He had his own private law practice from 1981 to 1985. Governor David Pryor appointed Moore as chairman of the Arkansas Transportation Commission in 1977. He would serve on the staff of Governor Bill Clinton and served two decades as Director of the Alcoholic Beverage Control Board. He is a member of the American Legion, the Arkansas City Chamber of Commerce, Vice Chairman of the Desha County Historic Preservation Society and Vice Chairman of the John H. Johnson Cultural and Entrepreneurial Center Board. His term will expire in January of 2023.



Frank D. Scott, Jr.
Commissioner

COMMISSIONER FRANK D. SCOTT, JR., of Little Rock, was appointed by Governor Mike Beebe effective October 17th of 2013. He replaced John Burkhalter who resigned from the Commission. Scott serves as business development officer for First Security Bank. He received his undergraduate degree from the University of Memphis. He then obtained a Master's of Business degree with an emphasis on strategic management from the University of Arkansas at Little Rock. Scott was Governor Beebe's Intergovernmental Affairs Director beginning in 2007. He left the Governor's staff in 2012 to join First Security Bank. In addition to his work at First Security, Scott serves on the boards of directors for the Little Rock Port Authority and Big Brothers/Big Sisters of Central Arkansas. His term will expire in January of 2017.

CONSTRUCTION HIGHLIGHTS

DISTRICT ONE

COUNTIES: Crittenden, Cross, Lee, Monroe, Phillips, St. Francis and Woodruff

Three Interstate rehabilitation projects were underway in District One in 2013. The first of those projects awarded was for the improvement of approximately eight miles of Interstate 55, from Interstate 40 to Jericho in Crittenden County. The \$7.7 million project was awarded to APAC-Tennessee, Inc. of Memphis Tennessee, and was completed in August. A \$51.9 million project was awarded to APAC-Tennessee, Inc. to reconstruct 7.9 miles of Interstate 40, from Forrest City to Highway 38 in St. Francis County. This project is to be completed in the summer of 2014. A \$32.1 million project was awarded to Koss Construction Company of Topeka, Kansas, to reconstruct 2.6 miles of Interstate 40 from Highway 77 to Interstate 55 in Crittenden County. This project is to be completed in late 2014.



DISTRICT TWO

COUNTIES: Arkansas, Ashley, Chicot, Desha, Drew, Grant, Jefferson and Lincoln

Completion is nearing on the widening of Highway 82 near Lake Village. The project was awarded to Ideal Construction Company of Crossett, Arkansas, in 2011 for \$15.2 million. Improvements include widening 4.5 miles of the roadway to five lanes and replacing a bridge over Ditch Bayou. The improvements extend from the Mississippi River Bridge westward to the intersection with Highway 65 at Fairview. When completed, motorists will have four travel lanes on Highway 82 and Highway 65 through the Lake Village area to Interstate 530 in Pine Bluff.

DISTRICT THREE

COUNTIES: Hempstead, Howard, Lafayette, Little River, Miller, Nevada, Pike and Sevier

Work continues in Miller County on the new four-lane location of Highway 71 between Doddridge and the Louisiana state line. All clearing, grading and structure work was completed on this 2.5-mile section of future Interstate 49 in April of 2013. L&T Construction, Inc. of Hernando, Mississippi, was awarded the contract for \$7.3 million on that portion of the roadway. The project was funded in part with money provided by the American Recovery and Reinvestment Act matched with State and local funds. Three projects currently underway are completing this work, which will become part of Interstate 49 connecting Shreveport, Louisiana, and Texarkana, Arkansas, at the intersection with Interstate 30.

DISTRICT FOUR

COUNTIES: Crawford, Franklin, Logan, Polk, Scott, Sebastian and Washington

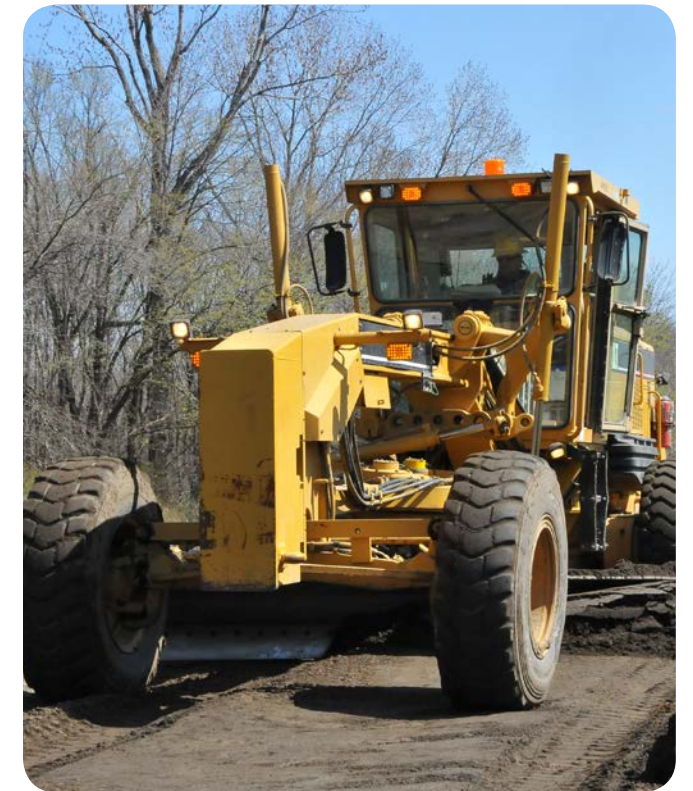
Work on the largest single contract ever awarded in AHTD history began in January of 2013, a \$78.8 million contract for rehabilitation of Interstate 540 in Fort Smith/Van Buren. Awarded to Kiewit Infrastructure South Company of Fort Worth, Texas, the project extends seven miles in Crawford and Sebastian Counties. The improvements begin at Interstate 40 in Van Buren and continue southward to Highway 22 in Fort Smith. In addition to the travel lanes, new bridges are being built in both directions of travel at Clayton Branch, Grand Avenue, Rogers Avenue, the Union Pacific Railroad Overpass in Crawford County and the Arkansas River Relief Bridge just south of the Arkansas River. Bridges over Highway 64 and Highway 162, in Crawford County, will have new decks constructed and will be raised in order to increase the clearance for the traffic that travels below the bridges. Estimated completion is in the summer of 2014.



DISTRICT FIVE

COUNTIES: Cleburne, Fulton, Independence, Izard, Jackson, Sharp, Stone and White

Work was substantially completed in early 2013 on a construction project that widened approximately one mile of Highway 167 in Ash Flat. The improvements extend from Highway 354 northward to Highway 62/412 and widened the road from two to five lanes with curb and gutter. The project was awarded to White River Materials, Inc. of Batesville, Arkansas, in early 2011 for \$4.5 million and work started shortly thereafter. Work continued on the reconstruction of five miles of Highway 167 near Bald Knob. The \$19.8 million project is reconstructing the main lanes and the interchange ramps at Highway 157 and B. K. Lake Road.



CONSTRUCTION HIGHLIGHTS

DISTRICT SIX

COUNTIES: Garland, Hot Spring, Lonoke, Prairie, Pulaski and Saline

Construction was completed in the spring of 2013 on improvements to the Highway 70 East Interchange in Hot Springs. Awarded to Mobley Contractors Inc. of Morrilton, Arkansas, for \$6.9 million, the project constructed a new ramp and acceleration lane to Highway 70 from the Martin Luther King Expressway. The ramp carries northbound traffic on the Expressway to the westbound lanes of Highway 70 leading into Hot Springs. The acceleration lane is for northbound traffic on the Expressway merging onto Highway 70 East towards Little Rock. Work continued on the Interstate 430-630 Big Rock interchange improvements in Little Rock in 2013. The third and final phase of the project should be completed in mid-2015.

DISTRICT SEVEN

COUNTIES: Bradley, Calhoun, Clark, Cleveland, Columbia, Dallas, Ouachita and Union

Work began in May of 2013 on the widening of five miles of Highway 167 in Dallas and Cleveland Counties. McGeorge Contracting Company, Inc. of Pine Bluff, Arkansas, was awarded the contract at \$33.4 million. The project is located north of the city of Fordyce. When completed, the improvements will make Highway 167 four and five lanes between Highway 273 and Peters Road, near the Cleveland County line. Work is ahead of schedule and should be completed in the summer of 2015. Once completed, Highway 167 will be four lanes its entire length across Dallas County. It is part of a larger plant to connect Little Rock and El Dorado with a four-lane roadway.

DISTRICT EIGHT

COUNTIES: Conway, Faulkner, Johnson, Montgomery, Perry, Pope, Van Buren and Yell

Construction began in January of 2013 on the reconstruction of seven miles of Interstate 40 in Pope County. The improvements are located just south of Russellville. The \$42 million project was awarded to Blackstone Construction of Russellville, Arkansas. In addition to rehabilitating the main travel lanes, the work includes the replacement of four bridge structures. The project is halfway complete and is targeted to be finished in the spring of 2015.



DISTRICT NINE

COUNTIES: Baxter, Benton, Boone, Carroll, Madison, Marion, Newton and Searcy

A project that widened Highway 412 in Siloam Springs was completed in 2013. The improvements begin at the Oklahoma state line and extend eastward to Washington Street for a total of 1.6 miles. APAC-Arkansas, Inc. of Fayetteville, Arkansas, was awarded the \$7.6 million contract in late 2009. The work widened this busy section of highway from five lanes to six lanes divided with curb and gutter. Also getting underway in 2013 was the first of several projects that will build the Bella Vista Bypass. APAC-Central, Inc. of Fayetteville was awarded the contract in February for \$19.8 million. The job is located in the Hiwassee area and is constructing three miles of what initially will be two lanes of the four-lane bypass. Interchanges at Highway 72 North and 72 South are included in this phase of construction.



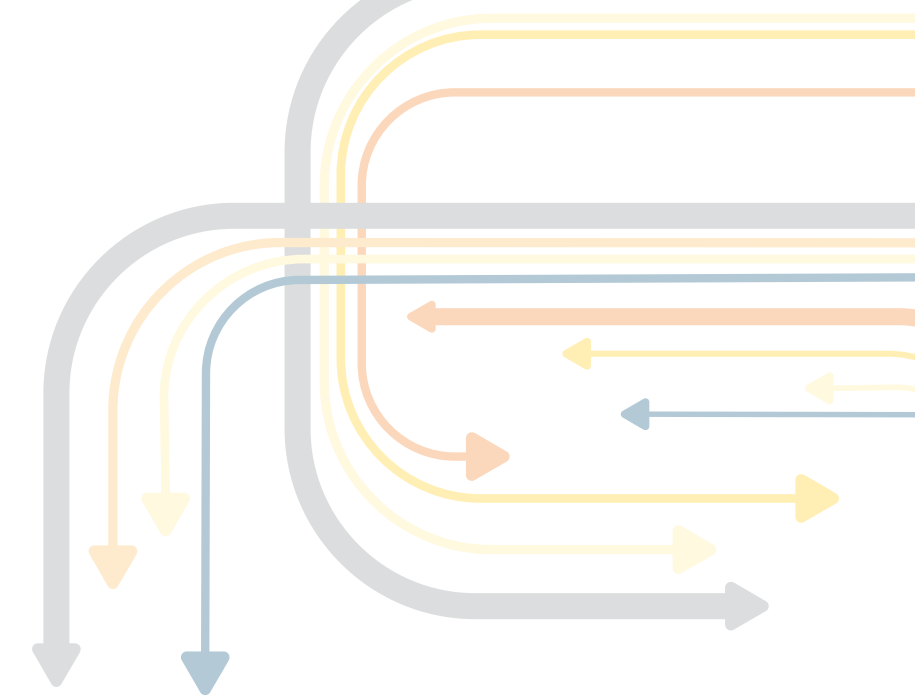
DISTRICT TEN

COUNTIES: Clay, Craighead, Greene, Lawrence, Mississippi, Poinsett and Randolph

A project is underway in Craighead County that is widening three miles of Highway 226 to four lanes. The work also includes construction of two bridges, over Big Creek and Big Creek Ditch Relief. This project was awarded to Robertson Contractors Inc. of Poplar Bluff, Missouri, for \$37.8 million and work began in late 2012. The improvements begin at the new Highway 49 connection at Jonesboro and extend westward. Work should be completed by the winter of 2016. This project is one of seven planned or underway to complete a four lane divided connector from Jonesboro to Highway 67, just west of Cash.



GROUNDBREAKINGS & RIBBON CUTTINGS



ARKANSAS WELCOME CENTERS – HELENA-WEST HELENA/WEST MEMPHIS

Two new Arkansas Welcome Centers opened their doors to travelers in 2013.

In West Memphis, a 6,400-square foot building located on Interstate 40 was opened on May 28th. Staff members from the Arkansas State Highway & Transportation Department and Arkansas Parks & Tourism were on hand with emcee Senator Keith Ingram. The new building features design elements such as native stone and large timbers.

In Helena-West Helena, Governor Mike Beebe was the special guest of honor as the ribbon was cut on a new Center there on November 19th. The Center is over 3,500-square feet and features classic antebellum architectural style. It is located on Highway 49.

Both new buildings feature state-of-the-art technology including computer kiosks, information areas, sitting areas and special exhibits.



Helena-West Helena Welcome Center Dedication

HIGHWAY 549 LOOP – TEXARKANA

Local dignitaries and Department officials gathered on April 30th for the dedication of the Highway 549 Loop in Texarkana.

Four separate construction projects totaling \$130 million were awarded to construct the loop with the first one beginning in 2006.

The new section of roadway now extends Highway 549 from Arkansas Boulevard, across Interstate 30 and intersects at Highway 71, north of town.

The roadway will eventually become part of Interstate 49 that will run from the Gulf of Mexico northward to Canada.



Highway 549 Loop Dedication

HIGHWAY 530 – PINE BLUFF TO STAR CITY

A new 18-mile section of Highway 530 was dedicated on September 6th. The 18-mile roadway on new location extends from Interstate 530 in Pine Bluff to Highway 114 near Star City.

Highway 530 is a planned 38-mile roadway often referred to as the Interstate 69 connector road. It will eventually connect Interstate 530 in Pine Bluff to Highway 278 near Wilmar and the proposed Interstate 69 corridor.

Eight contracts totaling \$152 million have already been let for construction of Highway 530. Seven of those have been completed. The eighth will be completed in late 2014.



Highway 530 Dedication

DISTRICT FOUR HEADQUARTERS – FORT SMITH

A ribbon was cut on June 17th on a new \$13.2 million District Four Headquarters.

The 55,000-square foot facility includes 14 structures and is located on Frontier Road in Barling.

Approximately 100 Department employees are located at the complex.

The new location is located near the Future Interstate 49 corridor. The area is also home to the Fort Chaffee Redevelopment Authority, which deeded 40 acres to the Department for the relocation project.



District Four Headquarters Dedication

NEW IN 2013

IDRIVEARKANSAS.COM

The Department kicked off a new website in 2013 called IDriveArkansas. The site is an information resource for motorists to use before they travel Arkansas' highways. Travelers can now access the site for lane closure information, road conditions, live traffic flow and travel information. There is also information on rest area locations, commuter Park and Ride lots, and weight restrictions. Close to one million visitors have visited IDriveArkansas.com and received valuable travel information on the site.



ARKANSAS WELCOME CENTERS

Motorists traveling our State now have two new Arkansas Welcome Centers to enjoy. Ribbon-cutting ceremonies were held at new facilities in West Memphis and in Helena-West Helena in 2013. Eight new Centers have now been built over the past eleven years. In addition to opening the doors at these two Centers in 2013, they can also be enjoyed in Texarkana, Corning, El Dorado, Fort Smith/Van Buren, Lake Village and Blytheville. A study conducted in the late 1990s recommended replacement of the eight facilities. Funding has been provided by Federal Transportation Enhancement Funds, the American Recovery and Reinvestment Act of 2009 and State matching funds.



DISTRICT FOUR HEADQUARTERS

In Fort Smith, the Arkansas State Highway and Transportation Department cut a ribbon on a brand new District Four Headquarters. The new complex sits on almost 40 acres and consists of 14 structures. The new facility marks the first time that District-wide crews have all been located at the District 4 Headquarters. The \$13 million facility contains 55,000 square feet and includes a District Administration building, Resident Engineer Office, an Area Maintenance Crew Building, Highway Police Commander's Office, District Materials Lab, Body and Paint Shop and storage buildings, among other things.

CITY STREETS IMPROVEMENT PROGRAM

Arkansas' new State Aid City Streets Program got underway in 2013. Incorporated cities and towns may now request funding and utilize it to improve city streets in their area that serve as major or minor arterial and collector routes. The State Aid City Street Committee administers the program. The AHTD provides technical assistance to the Street Committee. For projects approved by the Street Committee, the AHTD designs the work, procures construction contracts and inspects City Street Program funded projects. To date, over 107 miles of municipal streets in Arkansas have been improved. A total of 23 projects have been completed, seven are under construction and 23 more are planned. They represent a much needed infrastructure investment to this point of more than \$17 million. Funding comes from one penny of the State's motor fuels tax on gasoline and diesel and equals approximately \$20 million per year.



RECOGNITIONS & ACCOMPLISHMENTS

The Arkansas State Highway & Transportation Department was presented an **OUTSTANDING ENGINEERING PROJECT OF THE YEAR AWARD** from the American Society of Civil Engineers (ASCE) in 2013. The award was given for the Department's work on the Interstate 430/630 Big Rock Interchange in Little Rock. Crews are now in the third phase of improvements which have included the widening of a ramp connecting Interstate 630 and Interstate 430, installation of multiple traffic signals, replacement of four existing bridge structures, widening loop ramp connections, construction of a bridge over Shackleford Road and construction of two flyover ramps. The \$150 million project is expected to be completed in mid-2015.

Arkansas Highways, the Department's bimonthly magazine, received two awards for 2013. The AHTD won **FIRST PLACE** in the category of **EXTERNAL NEWSLETTER AT TRANSCOMM 2013**, the annual meeting for the American Association of State Highway and Transportation Officials (AASHTO) Subcommittee on Transportation Communications. The skills contest recognizes outstanding work of public relations practitioners. The contest is considered the premier competition in the transportation industry and the awards have become a standard of public relations excellence among State DOTs. *Arkansas Highways* magazine also was recognized with a **PLATINUM AWARD** in the international **MARCOM AWARDS** competition. The awards recognize outstanding concept, writing and design of print publications. The annual competition has grown to perhaps the largest of its kind in the world with approximately 6,000 entries submitted each year from the United States and other countries.

AASHTO presented the **Arkansas State Highway and Transportation Department** with a **RESEARCH "SWEET 16" AWARD** in 2013. Each year, the Research Advisory Committee to AASHTO's Standing Committee on Research collects High Value Research highlights from State Departments of Transportation across the nation to showcase projects that are providing transportation excellence through research. The top 16 are selected to form the "Sweet 16." The AHTD made the "Sweet 16" for design, construction and monitoring of roller compacted concrete pavement in the Fayetteville Shale Play in northern Arkansas.

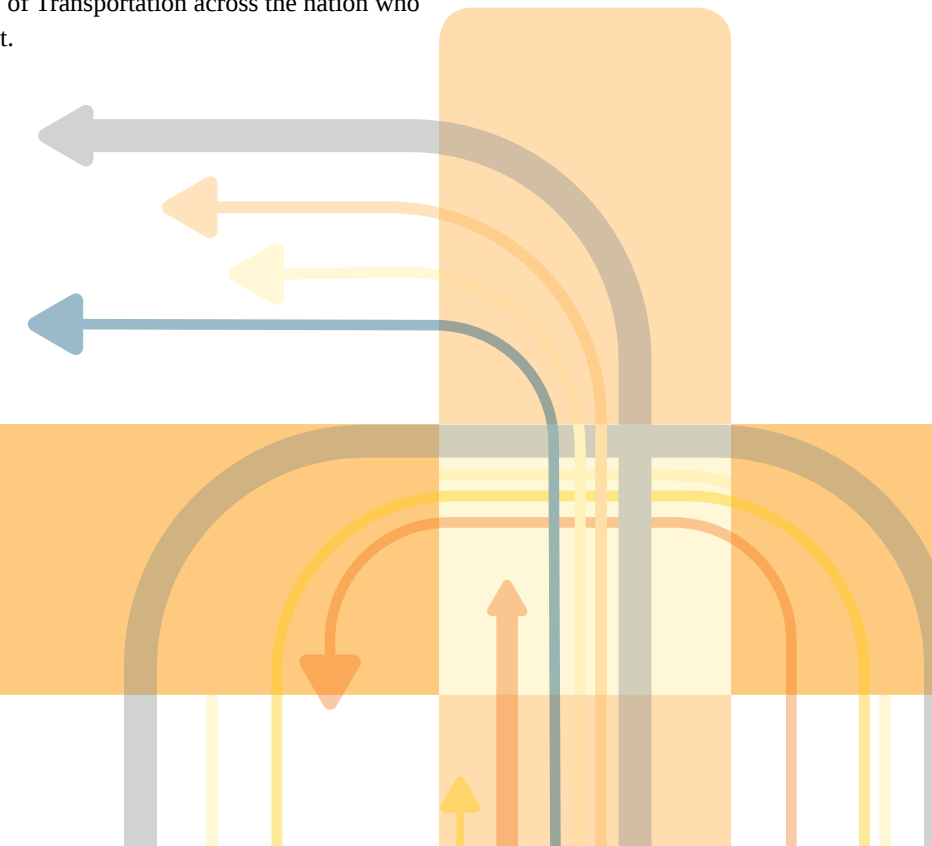
Officer Derek Canard of the Arkansas Highway Police was awarded the **JIMMY K. AMMONS GRAND CHAMPION AWARD** at the North American Inspectors Championship in Salt Lake City. The international event is dedicated to recognizing and rewarding commercial vehicle inspector excellence. In addition to the title of Grand

Champion, Canard won first place in several competition categories including the Level 1 Inspection, the Passenger Vehicle (Motorcoach) Inspection, the Hazardous Materials/Transportation of Dangerous Goods category and the Cargo Tank/Bulk Packagings Inspection.

Marcus Standridge, a Maintenance Aide II in District 4, received the **AHTD LIFESAVING AWARD**. The award is presented to employees who go above and beyond what is expected to help others that are faced with a possible life or death situation. Standridge assisted a fellow Department employee after a mowing accident in late 2012. He is only the eighth employee over the Department's history to be presented the award.

Scott Wroten, Section Head of Acquisitions in the Right of Way Division, was selected as the recipient of the nationally-recognized **GEORGE C. ASKEW AWARD FROM THE ARKANSAS PUBLIC ADMINISTRATION CONSORTIUM**. The award brings national recognition to Certified Public Manager program participants and graduates for the use of premier management practices exemplifying the philosophy of the Consortium in the completion of an exceptional curriculum project.

Elizabeth Mayfield-Hart, Staff Planning Engineer in the Department's System Information and Research Division, has been recognized by the Federal Highway Administration (FHWA) with the **FHWA ADMINISTRATOR'S PUBLIC SERVICE AWARD**. Mayfield-Hart earned the honor for her contributions towards updating the FHWA's Traffic Monitoring Guide (TMG). The Federal Highway Administration's Traffic Monitoring Guide provides State highway agencies and Metropolitan Planning Organizations (MPOs) with detailed procedures for collecting, processing and reporting traffic data for all public roadways. Mayfield-Hart was one of about a dozen team members from Departments of Transportation across the nation who worked on updating the document.



TOP TEN CONTRACTS OF 2013

ARKANSAS' HIGHWAY SYSTEM

There are 16,398 miles on Arkansas' highway system, making it the 12th largest system in the country. Five Interstate highways make up 656 of those miles. There are also approximately 7,250 bridges on the system.

Keeping those roadways in good condition is always a top priority for the Department. Great strides took place in 2013 that continued to improve the condition of our State's highways.

The Department's Interstate Rehabilitation Program is now well underway and will improve 458 miles of Interstate, nearly 70% of our total Interstate miles.

Final details on the Connecting Arkansas Program were put into place in 2013 as well. The program's focus is creating a four-lane grid system of highways connecting Arkansas cities and adding capacity to existing four-lane highways on the grid system.

To meet the demands on a growing highway system, 279 projects totaling \$647,280,714 million were let to contract in 2013. The largest project was a rehabilitation of Interstate 40 near Forrest City.

The next page lists the top ten projects let to contract during 2013.

TOP TEN CONTRACTS AWARDED IN 2013

RANK	PROJECT	LOCATION (COUNTY)	AWARD AMOUNT
1	Interstate 40 Rehabilitation	St Francis	\$51,946,709
2	Highway 167 Widening	Dallas & Cleveland	\$33,406,105
3	Interstate 40 Rehabilitation	Crittenden	\$32,123,725
4	Highway 367 White River Bridge	Jackson	\$31,361,489
5	Interstate 55 Rehabilitation	Mississippi	\$28,983,450
6	Highway 62 Widening	Benton	\$23,278,979
7	Interstate 40 Widening	Faulkner & Pulaski	\$21,493,477
8	Highway 67 Reconstruction	White	\$19,798,761
9	Highway 18 Widening	Craighead & Mississippi	\$17,047,629
10	Interstate 540 Widening	Washington	\$16,600,000

TOTAL AWARD AMOUNTS 2006 – 2013

YEAR	NUMBER OF JOBS	TOTAL AMOUNT
2006	173	\$377,251,887
2007	202	\$374,889,601
2008	187	\$373,741,532
2009*	222	\$498,401,522*
2010*	230	\$567,915,542*
2011*	223	\$547,825,706*
2012**	256	\$700,685,723**
2013**	279	\$647,280,714**

* Totals include projects utilizing \$350 million in one-time funds from the American Recovery & Reinvestment Act of 2009.

** Includes IRP projects authorized by a November 2011 vote funded with bond proceeds.



(SEATED L. TO R.)
 FRANK VOZEL, *Deputy Director and Chief Engineer*
 SCOTT E. BENNETT, *Director*
 RALPH HALL, *Assistant to the Director*

(STANDING L. TO R.)
 MIKE FUGETT, *Assistant Chief Engineer for Design*
 EMANUEL BANKS, *Assistant Chief Engineer for Operations*
 LORIE TUDOR, *Assistant Chief Engineer for Planning*

ORGANIZATION & WORKFORCE

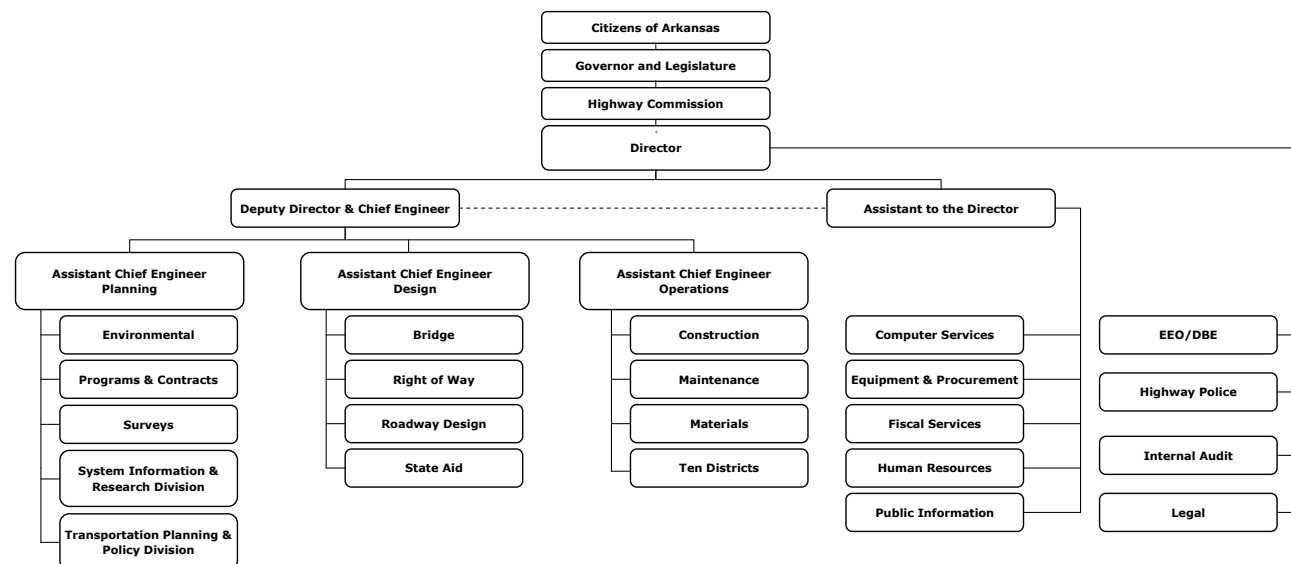
The Arkansas Highway Commission and the Arkansas State Highway and Transportation Department have enjoyed nearly 60 years of building a better transportation system for Arkansas under the Mack-Blackwell Amendment of 1953. The amendment provides that each of the five Arkansas Highway Commissioners serves a ten-year, staggered term, with a new Commissioner being appointed by the Governor every two years.

The Commission is assigned all powers necessary to fully and effectively administer Arkansas laws and regulations related to AHTD operations.

The Department Director is appointed not only for developing a professional staff, but also for overseeing construction and maintenance on Arkansas' highway system.

At the end of the year 2013, the Arkansas State Highway and Transportation Department employed 3,559 full-time, regular employees. That is a decrease of one employee as compared to the close of 2012.

The 2013 workforce included 2,849 males and 710 females. Of that total, 730 were minority employees and 2,829 were non-minority.



PUBLIC INVOLVEMENT

There is a great deal of planning that goes into designing and building a new highway. Among the issues that must be considered are the terrain, environmental issues, existing structures in the path of a new highway, connecting roadways and construction costs, to name just a few.

The Arkansas State Highway & Transportation Department's Environmental Division makes it a point to hold public meetings across the State throughout the year. The purpose is to share, with local residents, design ideas on new projects in their area and to listen to their ideas and opinions. The meetings also allow Department staff to answer any questions that local residents may have.



For 2013, public information meetings were held in 30 communities. Information on future highways was exchanged with approximately 2,200 residents.

Public meetings were held in Arkadelphia, Beebe, Berryville, Bono, Cave City, Choctaw, Conway, Crossett, Donaldson, Dover, Drasco, El Paso, Elkins, Fayetteville, Greenbriar, Hot Springs, Jacksonville, Lexa, Little Rock, Lowell, Magnolia, Mayflower, North Little Rock, Ozark, Pangburn, Rogers, Russellville, Searcy, Stephens and Williford.



DISTRICT INFORMATION

DISTRICT ONE

ENGINEER: RAY WOODRUFF

2701 Highway 64 • P.O. Box 278 • Wynne, AR 72396-0278
Telephone: (870) 238-8144 • Fax: (870) 238-2994
Email: ray.woodruff@arkansashighways.com

COUNTIES: CRITTENDEN, CROSS, LEE, MONROE, PHILLIPS, ST. FRANCIS AND WOODRUFF



DISTRICT TWO

ENGINEER: DAVID HENNING

4900 Highway 65 South • P.O. Box 6836 • Pine Bluff, AR 71611-6836
Telephone: (870) 534-1612 • Fax: (870) 534-2038
Email: david.henning@arkansashighways.com

COUNTIES: ARKANSAS, ASHLEY, CHICOT, DESHA, DREW, GRANT, JEFFERSON AND LINCOLN



DISTRICT THREE

ENGINEER: STEPHEN FRISBEE

2911 Highway 29 North • P.O. Box 490 • Hope, AR 71802-0490
Telephone: (870) 777-3457 • Fax: (870) 777-3489
Email: steve.frisbee@arkansashighways.com

COUNTIES: HEMPSTEAD, HOWARD, LAFAYETTE, LITTLE RIVER, MILLER, NEVADA, PIKE AND SEVIER



DISTRICT FOUR

ENGINEER: CHAD ADAMS

808 Frontier Road • P.O. Box 11170 • Fort Smith, AR 72917-1170
Telephone: (479) 484-5306 • Fax: (479) 484-5300
Email: chad.adams@arkansashighways.com

COUNTIES: CRAWFORD, FRANKLIN, LOGAN, POLK, SCOTT, SEBASTIAN AND WASHINGTON



DISTRICT FIVE

ENGINEER: LYNDAL WAITS

1673 Batesville Boulevard • P.O. Box 2376 • Batesville, AR 72503-2376
Telephone: (870) 251-2374 • Fax: (870) 251-2393
Email: lyndal.waits@arkansashighways.com

COUNTIES: CLEBURNE, FULTON, INDEPENDENCE, IZARD, JACKSON, SHARP, STONE AND WHITE



DISTRICT SIX

ENGINEER: JOE SARTINI

8900 Mabelvale Pike • P.O. Box 190296 • Little Rock, AR 72219-0296
Telephone: (501) 569-2266 • Fax: (501) 569-2366
Email: joe.sartini@arkansashighways.com

COUNTIES: GARLAND, HOT SPRING, LONOKE, PRAIRIE, PULASKI AND SALINE

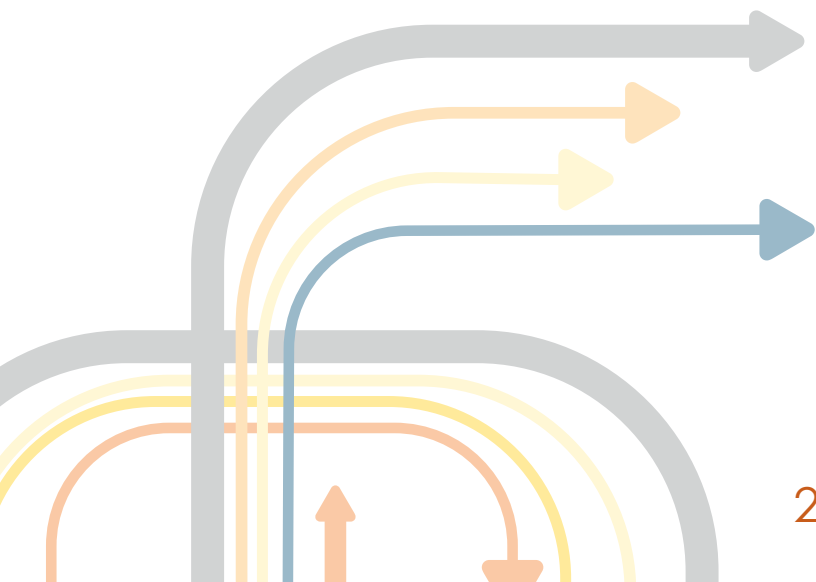


DISTRICT SEVEN

ENGINEER: JEFF VENABLE

2245 California Avenue • P.O. Box 897 • Camden, AR 71711-0897
Telephone: (870) 836-6401 • Fax: (870) 836-4864
Email: jeff.venable@arkansashighways.com

COUNTIES: BRADLEY, CALHOUN, CLARK, CLEVELAND, COLUMBIA, DALLAS, OUACHITA AND UNION



DISTRICT INFORMATION

DISTRICT EIGHT

ENGINEER: SCOTT MULLIS

372 Aspen Lane • P.O. Box 70 • Russellville, AR 72811-0070

Telephone: (479) 968-2286 • Fax: (479) 968-4006

Email: scott.mullis@arkansashighways.com

COUNTIES: CONWAY, FAULKNER, JOHNSON, MONTGOMERY, PERRY, POPE, VAN BUREN AND YELL



DISTRICT NINE

ENGINEER: STEVE LAWRENCE

4590 Highway 65 • P.O. Box 610 • Harrison, AR 72602-0610

Telephone: (870) 743-2100 • Fax: (870) 743-4630

Email: steve.lawrence@arkansashighways.com

COUNTIES: BAXTER, BENTON, BOONE, CARROLL, MADISON, MARION, NEWTON AND SEARCY



DISTRICT TEN

ENGINEER: WALTER MCMILLAN

2510 Highway 412 West • P.O. Box 98 • Paragould, AR 72451-0098

Telephone: (870) 239-9511 • Fax: (870) 236-1156

Email: walter.mcmillan@arkansashighways.com

COUNTIES: CLAY, CRAIGHEAD, GREENE, LAWRENCE, MISSISSIPPI, POINSETT AND RANDOLPH

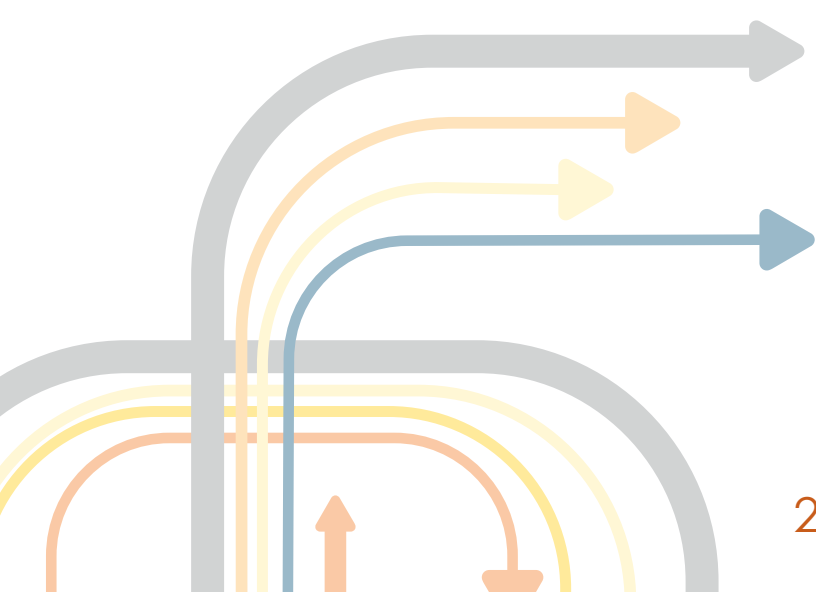


CENTRAL OFFICE

10324 Interstate 30 • P.O. Box 2261

Little Rock, Arkansas 72203-2261

Telephone: (501) 569-2000



MATERIALS LAB

11301 West Baseline Road
Little Rock, AR 72209
Telephone: (501) 569-2185



EQUIPMENT & PROCUREMENT

11302 West Baseline Road
Little Rock, AR 72209
Telephone: (501) 569-2667



MAINTENANCE

11300 West Baseline Road
Little Rock, AR 72209
Telephone: (501) 569-2231



2013 ANNUAL REPORT

ARKANSAS STATE HIGHWAY AND TRANSPORTATION DEPARTMENT



WWW.ARKANSASHIGHWAYS.COM