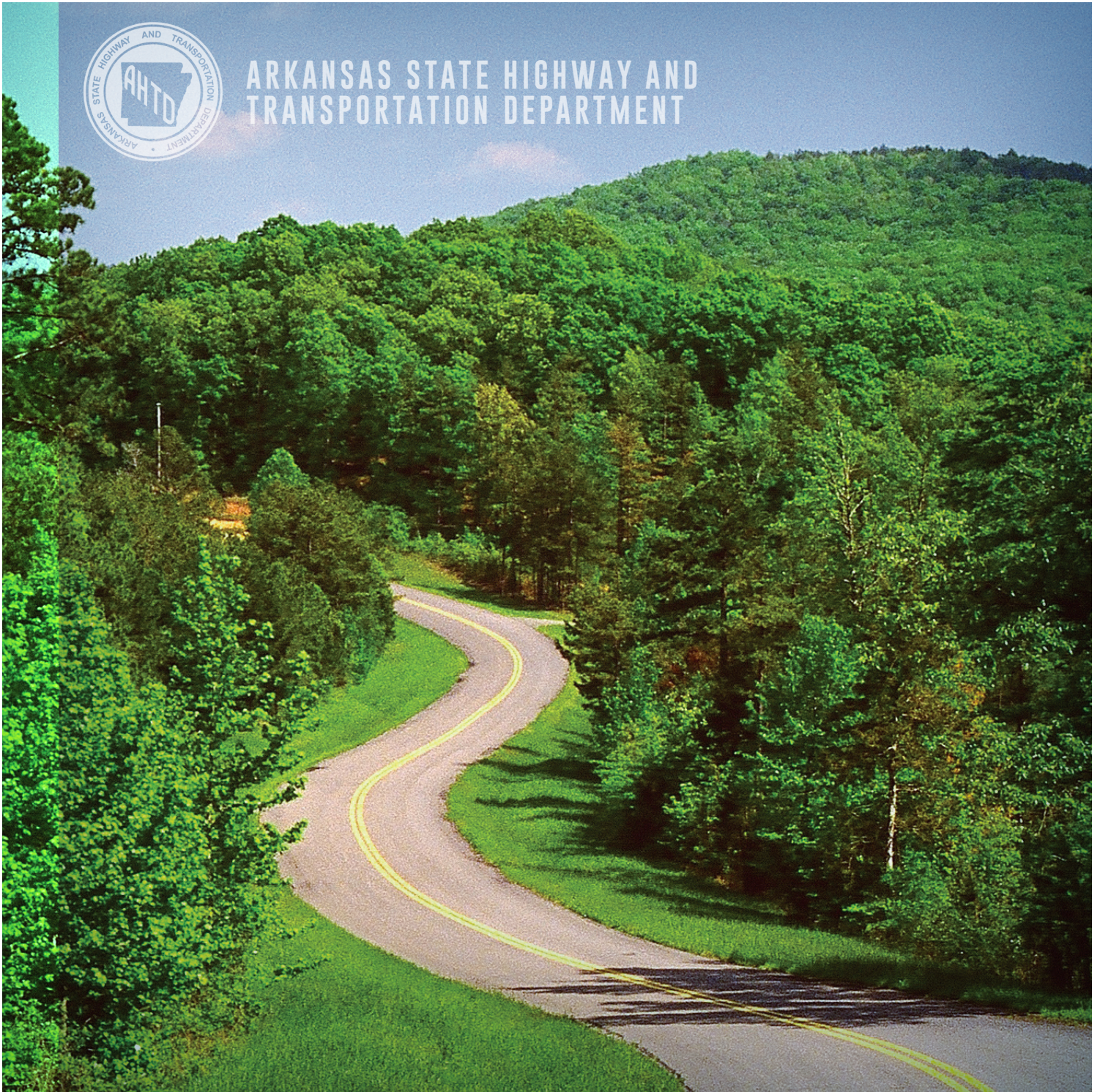




ARKANSAS STATE HIGHWAY AND TRANSPORTATION DEPARTMENT



2014 ANNUAL REPORT

front & back cover PHOTOS:
Highway 123 Johnson County
Highway 7 Perry County
Photography by John Jackson

PHOTO this page:
Highway 62 Benton/Carroll County Line
Photography by Rusty Hubbard



AHTD MISSION statement

TO PROVIDE A SAFE, EFFICIENT, AESTHETICALLY
PLEASING AND ENVIRONMENTALLY SOUND INTERMODAL
TRANSPORTATION SYSTEM FOR THE USER.

TABLE OF contents

DIRECTOR'S MESSAGE	4
ARKANSAS STATE HIGHWAY COMMISSION.....	6
CONSTRUCTION HIGHLIGHTS.....	8
GROUNDBREAKINGS & RIBBON CUTTINGS	12
PROGRAMS IN PROGRESS.....	14
RECOGNITIONS & ACCOMPLISHMENTS	16
TOP TEN CONTRACTS OF 2014.....	18
ORGANIZATION & WORKFORCE.....	20
PUBLIC INVOLVEMENT.....	21
DISTRICT INFORMATION	22

SCOTT E. BENNETT
director



director's MESSAGE

It is with pleasure that the Arkansas State Highway and Transportation Department presents its Annual Report for 2014. It was a year of hard work and commitment that allowed our State Highway Commission and our Department staff to get a great deal accomplished. We are pleased to share those accomplishments in the pages of this report.

Highway improvement projects took place across the State. Our two major road improvement programs progressed well in 2014. Under the Interstate Rehabilitation Program, a total of 135 miles of Interstate has now been rehabilitated with 63 projects yet to come. Under the Department's Connecting Arkansas Program (CAP), three projects got underway. One of the primary goals of the CAP is to connect all parts of the State with four-lane highways for safer and more efficient travel.

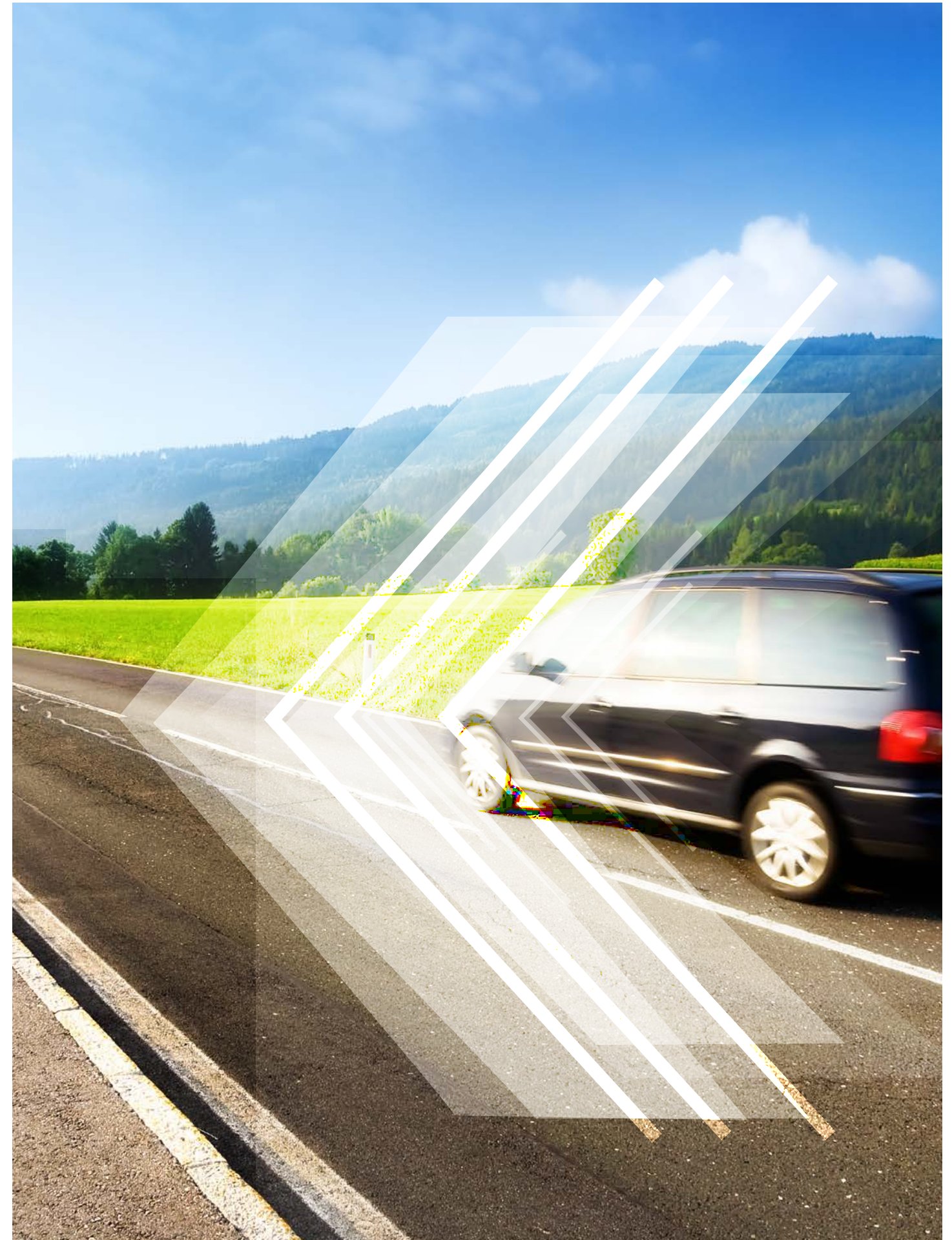
The year saw 270 projects awarded to contract totaling \$916,223,363. The largest of those improvements was to construct a segment of the Highway 412 Northern Bypass in Springdale. This report highlights construction activities in all ten Department Districts across the State. It also highlights numerous awards received by AHTD from outside organizations recognizing a job well done.

Our staff at the Arkansas State Highway and Transportation Department wants to thank the people of every community in Arkansas for their interest and support in helping us to make our highway system the very best it can be and one we can all be proud of.

A stylized signature of Scott E. Bennett in black ink, set against a light blue background with diagonal stripes.

SCOTT E. BENNETT, P.E.

Director of Highways and Transportation

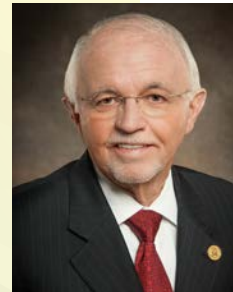


2014 highway COMMISSION



John Ed Regenold
Chairman

Commission Chairman JOHN ED REGENOLD, of Armorel, was appointed by Governor Mike Huckabee effective January 26th, 2005. He is a longtime business and civic leader in east Arkansas. Former Governor Huckabee previously appointed Regenold to the Arkansas Economic Development Commission. He is Chairman of the Armorel Planting Company. He is also a member of the St. Francis Levee Board and is a Commissioner for the District 17 Drainage District. He is the former Chairman of the Mississippi County Hospital System Board and a member of the board of the Arkansas Northeastern College Foundation. His term expired in January of 2015.



Dick Trammel
Vice Chairman

Commission Vice Chairman DICK TRAMMEL, of Rogers, was appointed by Governor Mike Beebe effective January 12th, 2009. He currently serves as Executive Vice President, member of the Board of Directors and Board Secretary of Arvest Bank in Rogers. He is past President and current member of the Board of the Rogers-Lowell Chamber of Commerce. He has served on the Rogers-Lowell United Way board and twice served as Drive Chairman. Trammel is a past President of the Rotary Club of Rogers and past Governor of Rotary International District 6110. Trammel is a founding Director, Director Emeritus and past Chairman of the Northwest Arkansas Radiation Therapy Institute (NARTI). He is a charter member, past Chairman and past board member of the Board of Trustees of Northwest Arkansas Community College. His term will expire in January of 2019.



Tom Schueck
Commissioner

Commissioner TOM SCHUECK, of Little Rock, was appointed by Governor Mike Beebe effective January 14th, 2011. Schueck has 41 years experience in forming and managing companies that are involved in heavy construction. Among the companies he has founded are Schueck Steel, Custom Metals, Prospect Steel, L-Con Constructors, L-Con Marine Fabricators and Heritage Golf. Schueck has served on the Arkansas Parks, Recreation and Travel Commission, and the Arkansas Pollution Control and Ecology Commission. He is a member of the Little Rock Municipal Airport Commission. He also serves on the boards of The Nature Conservancy, UAMS Foundation and the Arkansas Industrial Development Foundation. His term will expire in January of 2021.



Robert S. Moore, Jr.
Commissioner

Commissioner ROBERT S. MOORE, JR., of Arkansas City, was appointed by Governor Mike Beebe effective January 22nd, 2013. Moore is a three-term member of the Arkansas House of Representatives and has represented the 12th District since 2007. He served as Speaker of the House in 2011 and 2012. He is Owner/Operator of Moore Farms. He had his own private law practice from 1981 to 1985. Governor David Pryor appointed Moore as chairman of the Arkansas Transportation Commission in 1977. He served on the staff of Governor Bill Clinton and served two decades as Director of the Alcoholic Beverage Control Board. He is a member of the American Legion, the Arkansas City Chamber of Commerce, Vice Chairman of the Desha County Historic Preservation Society and Vice Chairman of the John H. Johnson Cultural and Entrepreneurial Center Board. His term will expire in January of 2023.



Frank D. Scott, Jr.
Commissioner

Commissioner FRANK D. SCOTT, JR., of Little Rock, was appointed by Governor Mike Beebe effective October 17th, 2013. He replaced John Burkhalter who resigned from the Commission. Scott serves as business development officer for First Security Bank. He received his undergraduate degree from the University of Memphis. He then obtained a Master's of Business degree with an emphasis on strategic management from the University of Arkansas at Little Rock. Scott was Governor Beebe's Intergovernmental Affairs Director beginning in 2007. He left the Governor's staff in 2012 to join First Security Bank. In addition to his work at First Security, Scott serves on the boards of directors for the Little Rock Port Authority and Big Brothers/Big Sisters of Central Arkansas. His term will expire in January of 2017.



construction HIGHLIGHTS

DISTRICT ONE

COUNTIES: Crittenden, Cross, Lee, Monroe, Phillips, St. Francis and Woodruff

Two projects continued at Clarendon in 2014 to replace the Highway 79 Bridge over the White River. The existing truss-style bridge was constructed in 1931. Work on the new bridge is being done by Jensen Construction Company and W.G. Yates & Sons Construction Company at a total cost of \$60.8 million. Completion of the new bridge is expected in the summer of 2015.



Construction on the Highway 79 Bridge over the White River

DISTRICT TWO

COUNTIES: Arkansas, Ashley, Chicot, Desha, Drew, Grant, Jefferson and Lincoln

Work is now substantially complete in Sheridan on the new Highway 167 Bypass located on the west side of town. Construction on the eight-mile bypass began in 2008 when T.J. Lambrecht Construction, Inc. was awarded a contract for \$8.6 million to construct the embankment and structures on the project. A second project, totaling \$25.9 million, was awarded to Martin Marietta Materials, Inc. of Hot Springs in 2010 to surface the new roadway. The new bypass opened to traffic in April of 2014.

DISTRICT THREE

COUNTIES: Hempstead, Howard, Lafayette, Little River, Miller, Nevada, Pike and Sevier

A significant milestone was reached in 2014 with the opening of the last four miles of new Interstate 49 in Miller County. To date, \$436 million has been spent on construction to build Interstate 49 from the State line to north of Texarkana, a distance of 42 miles. In addition to work on Interstate 49, 14 miles of Interstate 30 in Miller and Hempstead counties have been resurfaced through the Interstate Rehabilitation Program. Other work in the District included a project in Texarkana that is replacing a 1939 Depression Era bridge carrying Highway 71 over nine railroad tracks as well as two city streets. Manhattan Road & Bridge Company was awarded the contract to replace the Broad Street Bridge for \$11.5 million. The new bridge will be 585 feet in length and provide four traffic lanes, bicycle lanes and pedestrian sidewalks.



The Broad Street Bridge replacement is underway in Texarkana

DISTRICT FOUR

COUNTIES: Crawford, Franklin, Logan, Polk, Scott, Sebastian and Washington

The year 2014 saw the widening of just over a mile of Interstate 49 in Fayetteville. Pace Construction Company, LLC, completed the project at a cost of \$16.6 million. The improvements widened the road to six lanes, extending from Highway 16 northward to Porter Road. In Prairie Grove, a project building a five-mile bypass to the south of town was completed on Highway 62. APAC-Central, Inc. was awarded the job at \$9.2 million. The bypass was substantially completed in October.



The Prairie Grove Bypass on Highway 62

DISTRICT FIVE

COUNTIES: Cleburne, Fulton, Independence, Izard, Jackson, Sharp, Stone and White

Construction of 2.5 miles of passing lanes was completed on Highway 25 in Cleburne County. The new passing lanes are located east of Quitman. Bobby Kennedy Construction Company was awarded the project at a cost of \$4.2 million. Also reaching completion was the widening of a section of Pecan Street (Highway 367) in Beebe. JCI Construction, Inc. widened the roadway to three lanes at a cost of \$1 million. Construction began on the widening of Highway 167 north of Batesville. A project was awarded in November 2014 that will widen the highway from Highway 394 northward for five miles to Antioch Road. White River Materials, Inc. was awarded the contract for \$19 million. A project to install a cable median barrier on selected sections of 36 miles of Highway 67 between Bald Knob and Cash also got underway. Fenton Excavation & Construction, Inc. was awarded the contract at \$7.3 million.



Cable Median Barrier Installation

construction HIGHLIGHTS

DISTRICT SIX

COUNTIES: Garland, Hot Spring, Lonoke, Prairie, Pulaski and Saline

Improvements to Interstate 40 in Lonoke were completed in 2014. A new interchange located at Highway 89 in Lonoke has provided access from the Interstate to the west side of town. Redstone Construction Group of Little Rock was awarded the contract in January of 2013 for \$7.9 million. The City of Lonoke partnered with the AHTD on the project. The interchange gives direct access to Lonoke's nearly 400-acre industrial development zone. In addition to the new interchange, the project also included replacing the existing Highway 89 overpass of Interstate 40.



The new Highway 89 overpass at Lonoke

DISTRICT SEVEN

COUNTIES: Bradley, Calhoun, Clark, Cleveland, Columbia, Dallas, Ouachita and Union

Work began in May of 2013 to widen five miles of Highway 167 in Dallas and Cleveland Counties. Ideal Construction Company was awarded the contract for approximately \$29 million. The project is located north of the City of Fordyce. When completed, the improvements will make Highway 167 four and five lanes between Fordyce and Interstate 530. Crews expect to finish construction in the summer of 2016.

DISTRICT EIGHT

COUNTIES: Conway, Faulkner, Johnson, Montgomery, Perry, Pope, Van Buren and Yell

Construction continued in Faulkner County on a project that is building a new interchange on Interstate 40. Mobley Contractors, Inc. was awarded the contract to do the work at a cost of \$13.2 million. The new interchange will be located between Mayflower and Conway. Crews on this project are constructing the embankments and overpass bridge structures for the interchange. Estimated completion is expected in mid-2015. A future project will provide the base and surfacing. There will be several projects in a series that will construct a loop on the west side of Conway once this project is completed.



Widening of five miles of Highway 167 in Dallas and Cleveland Counties

DISTRICT NINE

COUNTIES: Baxter, Benton, Boone, Carroll, Madison, Marion, Newton and Searcy

Two projects are under construction as part of the Bella Vista Bypass in Benton County. A six-mile project extending from Highway 71 westward to Hiwasse is expected to be completed by Kolb Grading in the summer of 2016. Kolb Grading is also working on a second project, west of Hiwasse. This project is just over two miles in length and should be completed in the spring of 2015. Work continued on Interstate 49 in Rogers in 2014. The improvements will widen two miles of the roadway to six lanes extending from New Hope Road northward to the Highway 62/102 Interchange. The project should be completed in late 2015 and is being done by APAC-Central Inc. A final project continues to widen a six-mile section of Highway 62 to five lanes. Nabholz Construction is the contractor on the job that begins at Avoca and continues eastward to Garfield. Improvements to Highway 62 should be completed in late 2015 for a cost of \$23 million.

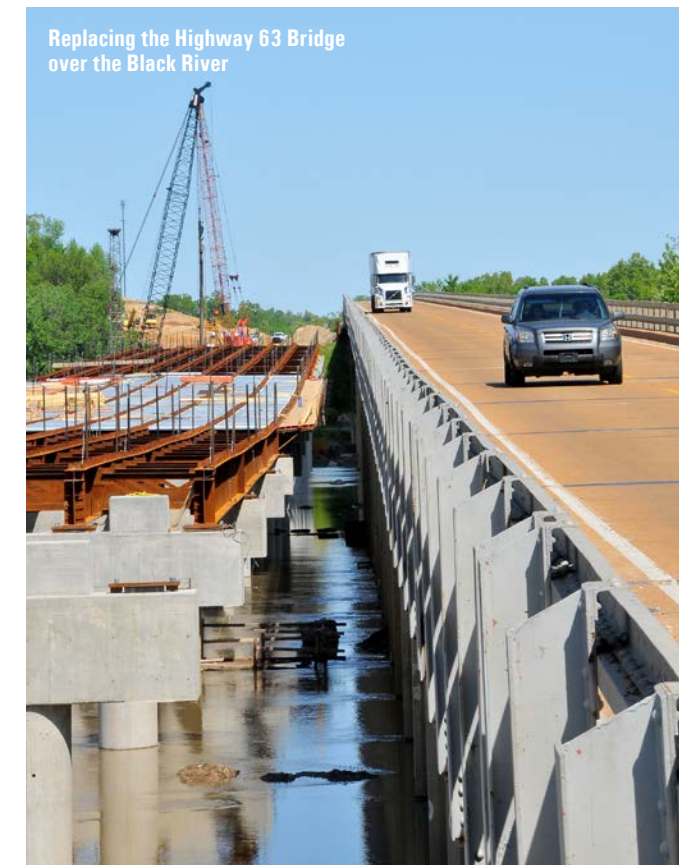


Widening a six-mile section of Highway 62 to five lanes

DISTRICT TEN

COUNTIES: Clay, Craighead, Greene, Lawrence, Mississippi, Poinsett and Randolph

Crews in Lawrence County were at work replacing the Highway 63 Bridge over the Black River. The \$39.2 million project is located at Black Rock and was awarded to Jensen Construction Company of Des Moines, Iowa, in November of 2012. The new bridge is being built adjacent to the existing one and is approximately 80% complete. Plans are to complete the new bridge and move traffic onto the new structure before proceeding with the demolition of the old structure. Approximately 9,000 vehicles cross the structure each day. When work is finished, the new plate girder bridge will measure 2,592 feet in length. Crews expect to have construction completed in the fall of 2015.



Replacing the Highway 63 Bridge over the Black River

groundbreakings & RIBBON CUTTINGS

INTERSTATE 49 – CONNECTING ARKANSAS AND LOUISIANA

The final segment of Interstate 49 connecting Texarkana and Shreveport was opened to traffic in late 2014. Arkansas has invested \$436 million to construct Interstate 49 from the Louisiana state line northward to Highway 71, just north of Texarkana. Including the Texarkana Loop, 21 projects have been involved in completing the 42 miles.

A total of \$1.2 billion toward the Interstate 49 corridor in Arkansas has either been completed or is under construction along the western border.

Interstate 49 is a congressionally-designated High Priority Corridor that will connect Kansas City, Missouri, to New Orleans, Louisiana. In Kansas City, Interstate 49 will connect with Interstate 29 to create a 1,700-mile, uninterrupted Interstate from Winnipeg, Manitoba in Canada through the heart of the United States to New Orleans. Once completed, Interstate 49 will intersect nine east-west Interstates.

Ribbon cutting ceremony for the last four miles of new Interstate 49



INTERSTATE 40 INTERCHANGE – LONOKE

Interstate 40 between Little Rock and Lonoke has a new interchange that opened in 2014. The new interchange, serving the west side of Lonoke, connects Highway 89 and Interstate 40. The \$7.9 million project is the city's second interchange on the Interstate. The City of Lonoke contributed twenty percent of the cost of the project that included minor widening of Highway 89 from Interstate 40 southward to Highway 70.



Lonoke Interchange Ribbon Cutting

HIGHWAY 5 BRIDGE – NORFOLK

The north central Arkansas town of Norfolk has a new bridge spanning the North Fork River. The \$4.5 million project on Highway 5 was completed in late 2014. The new bridge spans 500 feet and replaces a bridge that was built in 1936 and listed on the National Register of Historic Places. Commissioner Dick Trammel told the gathered crowd that in the past 10 years, almost \$40 million in highway projects have been completed in Baxter County.



Prairie Grove Bypass Ribbon Cutting

HIGHWAY 62 BYPASS – PRAIRIE GROVE

Local officials from the city of Prairie Grove and AHTD staff gathered to cut the ribbon on a \$15.2 million bypass that carries traffic south of town on Highway 62. The five-mile bypass began in 2011 and included two projects, one for grading and structures, and one for base and surfacing. The bypass was dedicated on October 29th, 2014.

HIGHWAY 82 – LAKE VILLAGE

Lake Village Mayor JoAnne Bush hosted several Highway Commissioners, AHTD Director Scott Bennett and a large crowd of local officials for the dedication of the widening of Highway 82 to five lanes. The \$15 million job widened almost 4.5 miles of the highway and extended from Fairview over to the Mississippi River Bridge leading into Mississippi. The project also included the replacement of a bridge over Ditch Bayou.



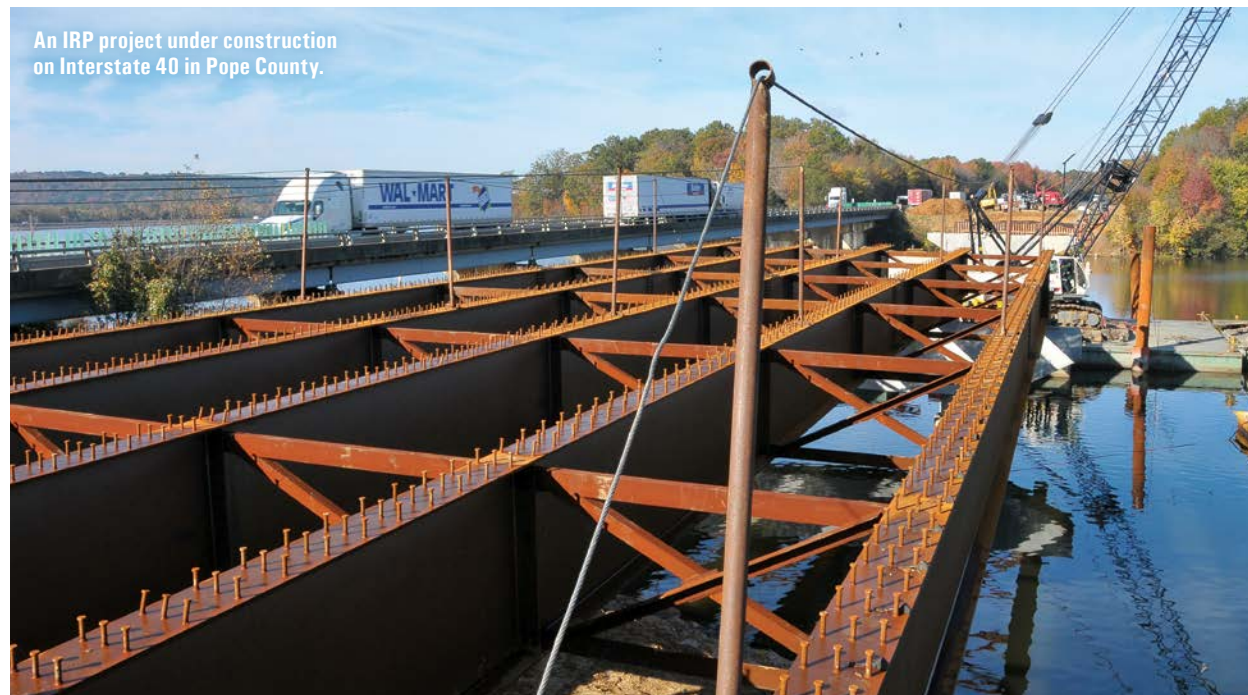
Highway 82 Widening Dedication

THE INTERSTATE REHABILITATION PROGRAM

Work continued in 2014 on AHTD's Interstate Rehabilitation Program. In a special election held November 8, 2011, the citizens of Arkansas voted to allow the Arkansas Highway Commission to issue up to \$575 million in GARVEE bonds to help finance improvements and repairs to existing Interstates in Arkansas.

This Interstate Rehabilitation Program (IRP) is virtually identical to the 1999 IRP, and in combination with existing federal and state revenues, is expected to support more than \$1 billion in improvements to our Interstate highways over the life of the program.

A total of 79 projects are included in the program. At the close of 2014, a total of 16 IRP projects had been completed. That represents 135 miles improved at a cost of \$269 million. Presently, there are eight projects under construction at a cost of \$211 million that will, when completed, add an additional 43 miles to the total completed. For 2015, 13 projects are scheduled to rehabilitate an additional 67 miles. The cost for the upcoming projects totals \$281 million.



An IRP project under construction on Interstate 40 in Pope County.

THE CONNECTING ARKANSAS PROGRAM

The Connecting Arkansas Program (CAP) is one of the largest highway construction programs ever undertaken by the Arkansas State Highway and Transportation Department. Through a voter-approved constitutional amendment, the people of Arkansas passed a 10-year, half-cent sales tax to improve highway infrastructure throughout the state. Thirty-five projects in 19 corridors will improve Arkansas' transportation system by expanding selected two-lane roadways to four-lane highways and adding new lanes to identified Interstate highways.

Three projects were let to contract in 2014. The three jobs are improving 16 miles of highway at a cost of \$192 million. A total of 32 projects are scheduled through the year 2019.



Highway Department officials and local dignitaries line up to break ground for the Highway 412 Northern Bypass in Springdale.

recognitions & ACCOMPLISHMENTS

With the unveiling of a **PURPLE HEART TRAIL** roadside sign in Texarkana in May of 2014, Arkansas became one of only three states in the country that has designated the Purple Heart Trail on all of its Interstate highways. In a ceremony at the Arkansas Welcome Center on Interstate 30 in Texarkana, Interstate 30 extending from the Texas border northward to Interstate 40 in North Little Rock became part of the trail. Arkansas joins Kansas and Montana in having all Interstate miles designated as Purple Heart Trails.

AHTD won a **PERPETUAL PAVEMENT AWARD** in April for a section of Highway 425 between Star City and Monticello in southern Arkansas. The award recognizes existing long life asphalt pavements demonstrating outstanding design and construction. The pavement must be a minimum of 35 years old and have never had a structural failure. The 2.3-mile section was one of eight highways in the United States to win the award. The award was announced by the Asphalt Pavement Alliance, a coalition of the Asphalt Institute, the National Asphalt Pavement Association and the State Asphalt Pavement Associations.

A **STATESCOOP 50 AWARD** was presented to the Department for the IDriveArkansas website. The award is one of the top national awards for members of the State and local government community. It was presented for online services that significantly streamline government operations. AHTD's IDriveArkansas website allows motorists to gain travel information before leaving home. The site provides up-to-the-minute information on construction zone locations, traffic flow, road conditions and other things that allow motorists to "know before they go."

Several members of the Arkansas Highway Police received the **ARKANSAS HIGHWAY POLICE LIFE SAVING AWARD** for their actions resulting in the saving of a human life. The award was presented to Corporal Robert Sellers, Sergeant Brad Perkins, First Lieutenant Jeff Bickerstaff, Sergeant Clyde Crookham, Private First Class Kyle Eveld, Sergeant Jeff Smith and Sergeant Tim Gushing.



Private First Class Derek Canard of the Arkansas Highway Police was selected to serve as a judge for the **2014 NORTH AMERICAN INSPECTORS CHAMPIONSHIP** held in Pittsburgh, Pennsylvania. The event is held annually in conjunction with the National Truck Driving Championships and is sponsored by the Commercial Vehicle Safety Alliance. Canard competed in the event in 2013 and came away as the national champion.

The International Fuel Tax Association (IFTA) has recognized Vicki Haydon, of the Internal Audit Division, for her work within the IFTA community. The organization presented Haydon with the **2014 RICHARD L. REEVES IFTA LEADERSHIP AWARD** at its 2014 Business Meeting held in Pittsburgh in August. The Leadership Award is presented to an individual who has distinguished herself or himself by outstanding contributions and involvement within IFTA. It recognizes effective leadership and outstanding accomplishments and contributions within the nominee's jurisdiction. The International Fuel Tax Association is an Arizona not-for-profit corporation formed to manage and administer the International Fuel Tax Agreement.

Sharon Hawkins, Section Head of GIS & Mapping, was appointed by then Governor Mike Beebe to the **STATE GIS BOARD (GEOGRAPHIC INFORMATION SYSTEM)** in 2014. The board researches, creates and implements GIS practices, methods and datasets for the State of Arkansas that will result in improved decision making, effective asset management and reduced costs.

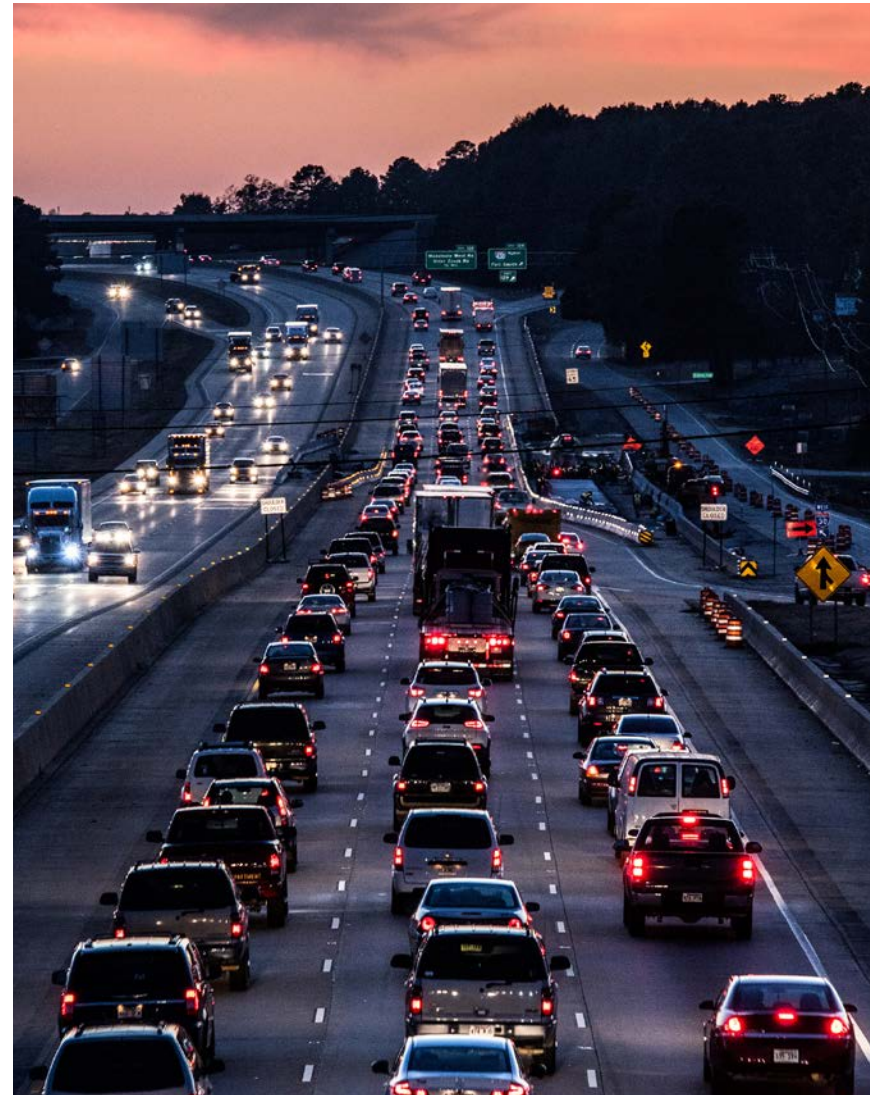
Ken Jordan, Section Head of the Training & Safety Section, has been named Vice-President of the **NORTH AMERICAN ASSOCIATION OF TRANSPORTATION SAFETY & HEALTH OFFICIALS (NAATSHO)**. NAATSHO is a national organization of Departments of Transportation that disseminates safety and health best practices to transportation workers. AHTD is part of the Southeast Region that includes Alabama, Florida, Georgia, Kentucky, Louisiana, Mississippi, North Carolina, Tennessee, Virginia and West Virginia.

ARKANSAS' HIGHWAY SYSTEM

There are 16,398 miles on Arkansas' highway system, making it the 12th largest system in the country. Eight Interstate highways make up 656 of those miles. There are also approximately 7,250 bridges on the system.

Keeping those roadways in good condition is always a top priority for AHTD. Crews worked on projects across the State in 2014 that continued to improve the condition of Arkansas' highways. 270 projects totaling \$916,223,363 million were let to contract in 2014. The largest project was the Highway 412 Northern Bypass at Springdale.

The next page lists the top ten projects let to contract during 2014.



TOP TEN CONTRACTS AWARDED IN 2014

RANK	PROJECT	LOCATION (COUNTY)	AWARD AMOUNT
1	Highway 412 Northern Bypass (Springdale)	Benton	\$100,620,381
2	Broadway Bridge (Highway 70)	Pulaski	\$98,404,049
3	Interstate 530 Rehabilitation	Pulaski	\$65,144,702
4	Highway 71 Bella Vista Bypass	Benton	\$52,605,673
5	Highway 67	Pulaski	\$41,943,453
6	Interstate 40 Widening	Pulaski	\$38,362,865
7	Interstate 40 Rehabilitation	Monroe	\$30,000,027
8	Highway 167 Ouachita River Bridge	Union & Calhoun	\$29,442,371
9	Interstate 55 Rehabilitation	Mississippi	\$25,362,155
10	Highway 63 Widening	Fulton	\$21,633,578

TOTAL AWARD AMOUNTS 2007 – 2014

YEAR	NUMBER OF JOBS	TOTAL AMOUNT
2007	202	\$374,889,601
2008	187	\$373,741,532
2009*	222	\$498,401,522*
2010*	230	\$567,915,542*
2011*	223	\$547,825,706*
2012**	256	\$700,685,723**
2013**	279	\$647,280,714**
2014***	270	\$916,223,363***

* Totals include projects utilizing \$350 million in one-time funds from the American Recovery & Reinvestment Act of 2009.

** Includes IRP projects authorized by a November 2011 vote funded with bond proceeds.

*** Includes IRP and CAP projects authorized by a half-cent sales tax increase in 2012.



(Seated L. to R.)
EMANUEL BANKS, Deputy Director and Chief Engineer
SCOTT E. BENNETT, Director
LORIE TUDOR, Deputy Director and Chief Operating Officer
 (Standing L. to R.)
TONY SULLIVAN, Assistant Chief Engineer for Operations
KEVIN THORNTON, Assistant Chief Engineer for Planning
MIKE FUGETT, Assistant Chief Engineer for Design

organization & WORKFORCE

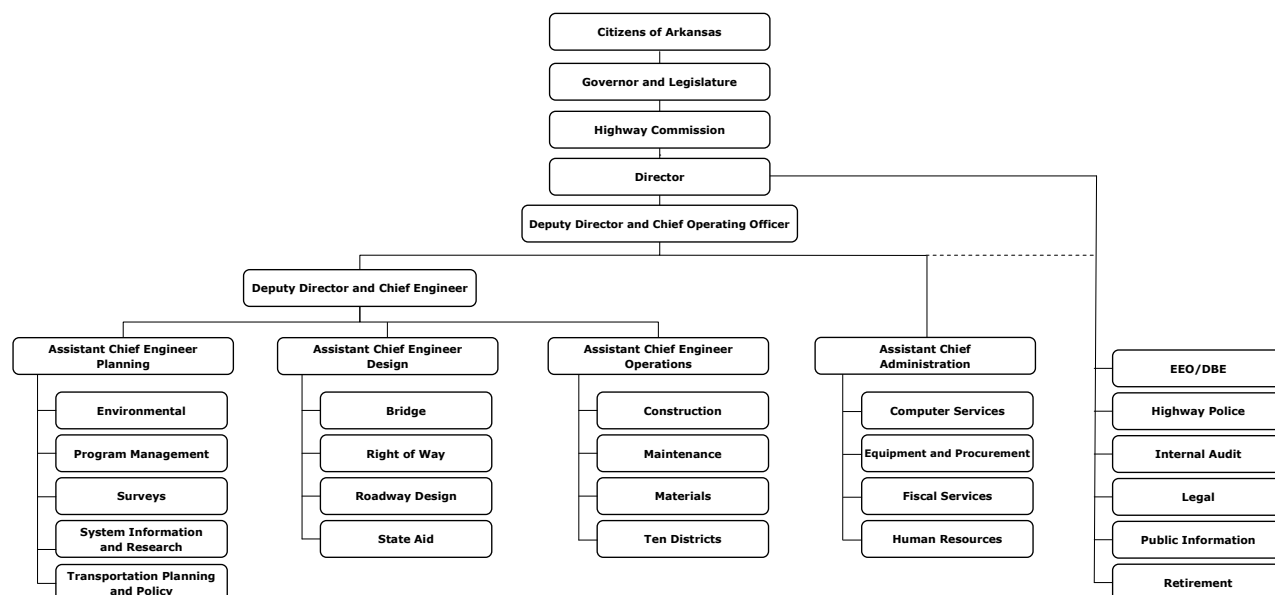
The Arkansas State Highway Commission and the Arkansas State Highway and Transportation Department have been working to provide Arkansas with the best transportation system possible since the Mack-Blackwell Amendment of 1953. Under that amendment, each of the five Arkansas Highway Commissioners serves a ten-year, staggered term with a new commissioner being appointed by the Governor every two years.

The Commission is assigned all powers necessary to fully and effectively administer Arkansas laws and regulations related to AHTD operations.

The Department Director is appointed to develop a professional staff and to oversee construction and maintenance on Arkansas' highway network.

At the end of the year 2014, the Arkansas State Highway and Transportation Department employed 3,663 full-time, regular employees.

The 2014 workforce was made up of 2,949 males and 714 females. Of that total, 766 were minority employees and 2,897 were non-minority.



public INVOLVEMENT

Designing and building new highways, and maintaining existing highways... it's what the Arkansas State Highway & Transportation Department's role is in our great State.

When it comes to building new roadways, there is a great deal of planning involved. Among the considerations for a highway on new location are the terrain, environmental issues, existing structures in the path of a new highway, connecting roadways and construction costs.

With so many issues to consider, it's important for AHTD to involve local residents in the process. That's why the Department makes it a point to hold public meetings across Arkansas throughout the year. The purpose is to share design plans for new projects with local residents who, in return, share their ideas and opinions because, after all, nobody knows the area better than those that live there. The public meetings are also an opportunity for AHTD staff to answer any questions residents may have and address any concerns.

For 2014, public information meetings were held in 15 communities across Arkansas. Information on future highways was exchanged with over 1,600 residents.

Public meetings were held in Alpena, Bentonville, Bryant, Conway, Fayetteville, Hampton, Hardy, Little Rock, Maumelle, Mountain View, North Little Rock, Paragould, Searcy, Stamps and Valley Springs.



DISTRICT ONE

ENGINEER: REX VINES

2701 Highway 64 • P.O. Box 278 • Wynne, AR 72396-0278
Telephone: (870) 238-8144 • Fax: (870) 238-2994
Email: rex.vines@ahtd.ar.gov

**COUNTIES: CRITTENDEN, CROSS, LEE, MONROE, PHILLIPS,
ST. FRANCIS AND WOODRUFF**



DISTRICT TWO

ENGINEER: DAVID HENNING

4900 Highway 65 South • P.O. Box 6836 • Pine Bluff, AR 71611-6836
Telephone: (870) 534-1612 • Fax: (870) 534-2038
Email: david.henning@ahtd.ar.gov

**COUNTIES: ARKANSAS, ASHLEY, CHICOT, DESHA, DREW, GRANT,
JEFFERSON AND LINCOLN**



DISTRICT THREE

ENGINEER: STEPHEN FRISBEE

2911 Highway 29 North • P.O. Box 490 • Hope, AR 71802-0490
Telephone: (870) 777-3457 • Fax: (870) 777-3489
Email: steve.frisbee@ahtd.ar.gov

**COUNTIES: HEMPSTEAD, HOWARD, LAFAYETTE, LITTLE RIVER, MILLER, NEVADA,
PIKE AND SEVIER**



DISTRICT FOUR

ENGINEER: CHAD ADAMS

808 Frontier Road • P.O. Box 11170 • Fort Smith, AR 72917-1170
Telephone: (479) 484-5306 • Fax: (479) 484-5300
Email: chad.adams@ahtd.ar.gov

**COUNTIES: CRAWFORD, FRANKLIN, LOGAN, POLK, SCOTT,
SEBASTIAN AND WASHINGTON**



DISTRICT FIVE

ENGINEER: LYNDAL WAITS

1673 Batesville Boulevard • P.O. Box 2376 • Batesville, AR 72503-2376
Telephone: (870) 251-2374 • Fax: (870) 251-2393
Email: lyndal.waits@ahtd.ar.gov

**COUNTIES: CLEBURNE, FULTON, INDEPENDENCE, IZARD, JACKSON, SHARP,
STONE AND WHITE**



DISTRICT SIX

ENGINEER: MARK HEADLEY

8900 Mabelvale Pike • P.O. Box 190296 • Little Rock, AR 72219-0296
Telephone: (501) 569-2266 • Fax: (501) 569-2366
Email: mark.headley@ahtd.ar.gov

**COUNTIES: GARLAND, HOT SPRING, LONOKE, PRAIRIE,
PULASKI AND SALINE**



DISTRICT SEVEN

ENGINEER: JEFF VENABLE

2245 California Avenue • P.O. Box 897 • Camden, AR 71711-0897
Telephone: (870) 836-6401 • Fax: (870) 836-4864
Email: jeff.venable@ahtd.ar.gov

**COUNTIES: BRADLEY, CALHOUN, CLARK, CLEVELAND, COLUMBIA, DALLAS,
OUACHITA AND UNION**



DISTRICT EIGHT

ENGINEER: SCOTT MULLIS

372 Aspen Lane • P.O. Box 70 • Russellville, AR 72811-0070
Telephone: (479) 968-2286 • Fax: (479) 968-4006
Email: scott.mullis@ahtd.ar.gov

COUNTIES: CONWAY, FAULKNER, JOHNSON, MONTGOMERY, PERRY, POPE, VAN BUREN AND YELL



DISTRICT NINE

ENGINEER: STEVE LAWRENCE

4590 Highway 65 • P.O. Box 610 • Harrison, AR 72602-0610
Telephone: (870) 743-2100 • Fax: (870) 743-4630
Email: steve.lawrence@ahtd.ar.gov

COUNTIES: BAXTER, BENTON, BOONE, CARROLL, MADISON, MARION, NEWTON AND SEARCY

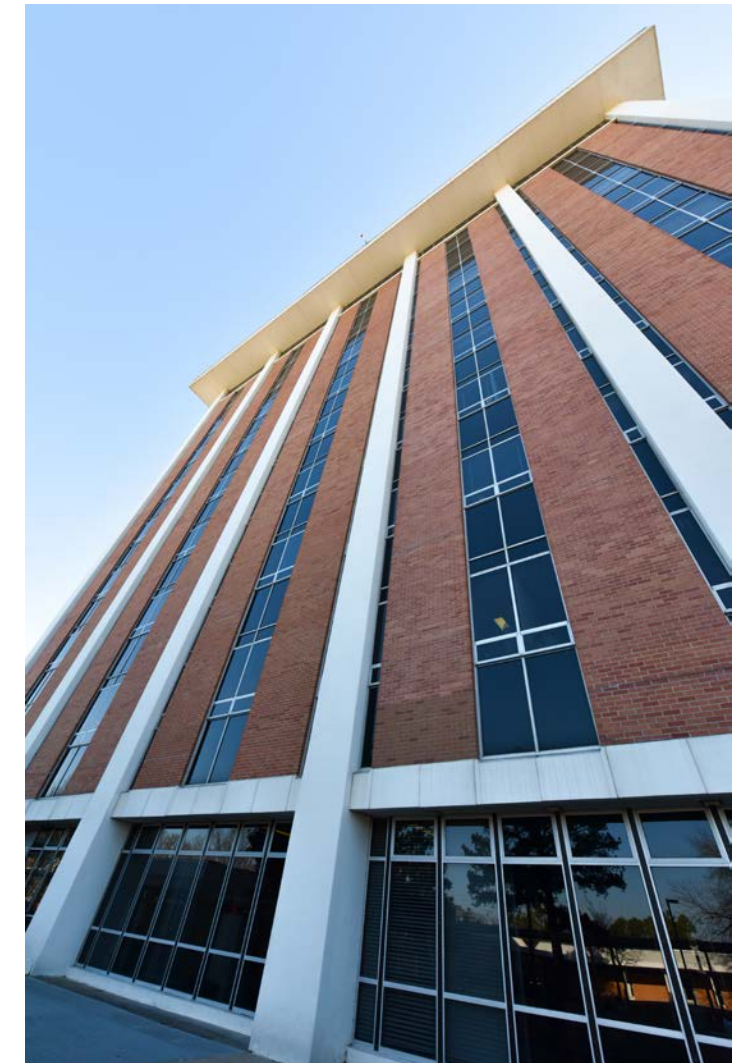


DISTRICT TEN

ENGINEER: WALTER MCMILLAN

2510 Highway 412 West • P.O. Box 98 • Paragould, AR 72451-0098
Telephone: (870) 239-9511 • Fax: (870) 236-1156
Email: walter.mcmillan@ahtd.ar.gov

COUNTIES: CLAY, CRAIGHEAD, GREENE, LAWRENCE, MISSISSIPPI, POINSETT AND RANDOLPH



CENTRAL OFFICE

10324 Interstate 30 • P.O. Box 2261
Little Rock, Arkansas 72203-2261
Telephone: (501) 569-2000



MATERIALS LAB

11301 West Baseline Road
Little Rock, AR 72209
Telephone: (501) 569-2185



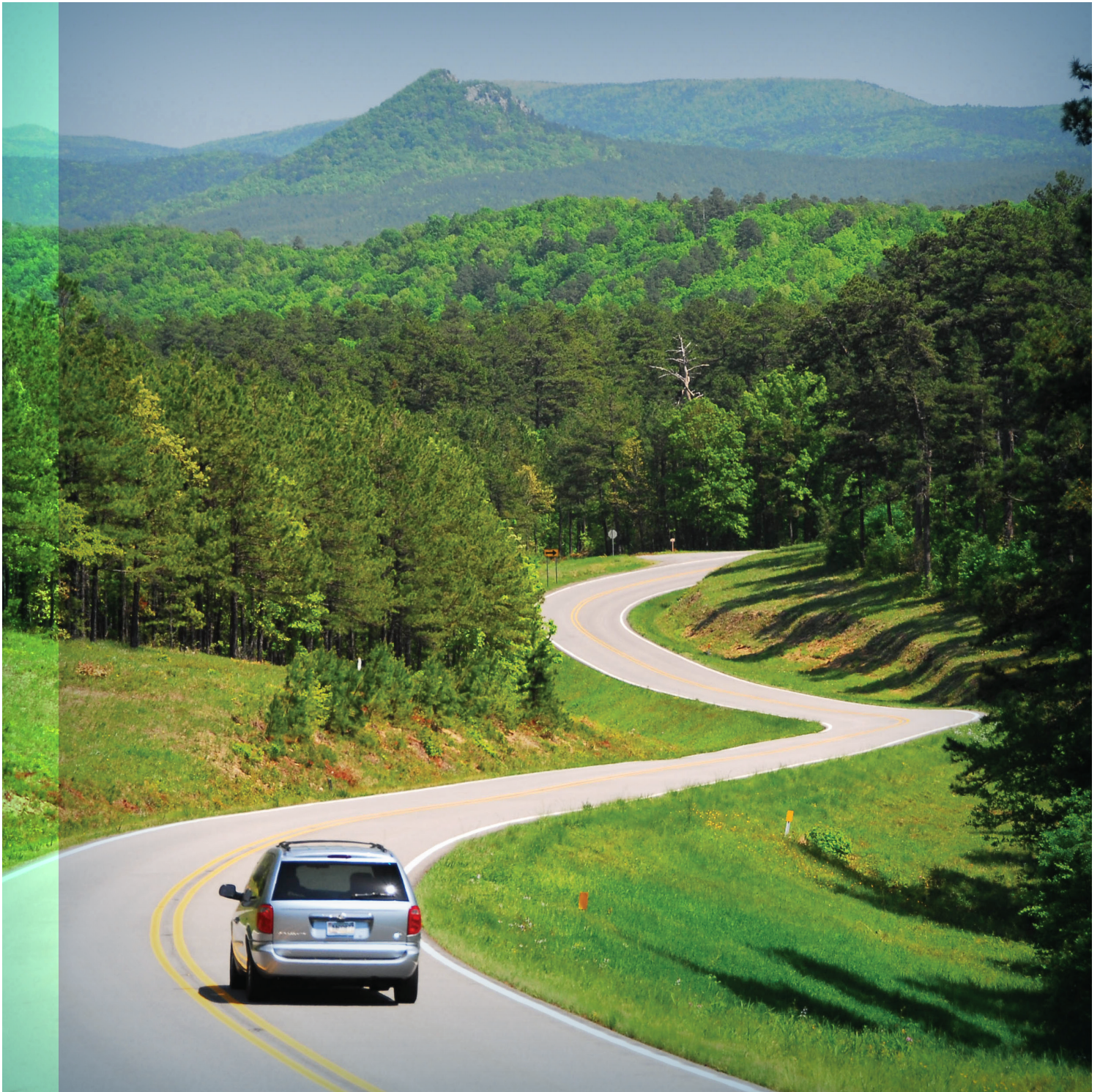
EQUIPMENT & PROCUREMENT

11302 West Baseline Road
Little Rock, AR 72209
Telephone: (501) 569-2667



MAINTENANCE

11300 West Baseline Road
Little Rock, AR 72209
Telephone: (501) 569-2231



ANNUAL REPORT ||| 2014

ARKANSAS STATE HIGHWAY AND TRANSPORTATION DEPARTMENT
WWW.ARKANSASHIGHWAYS.COM ||| WWW.IDRIVEARKANSAS.COM