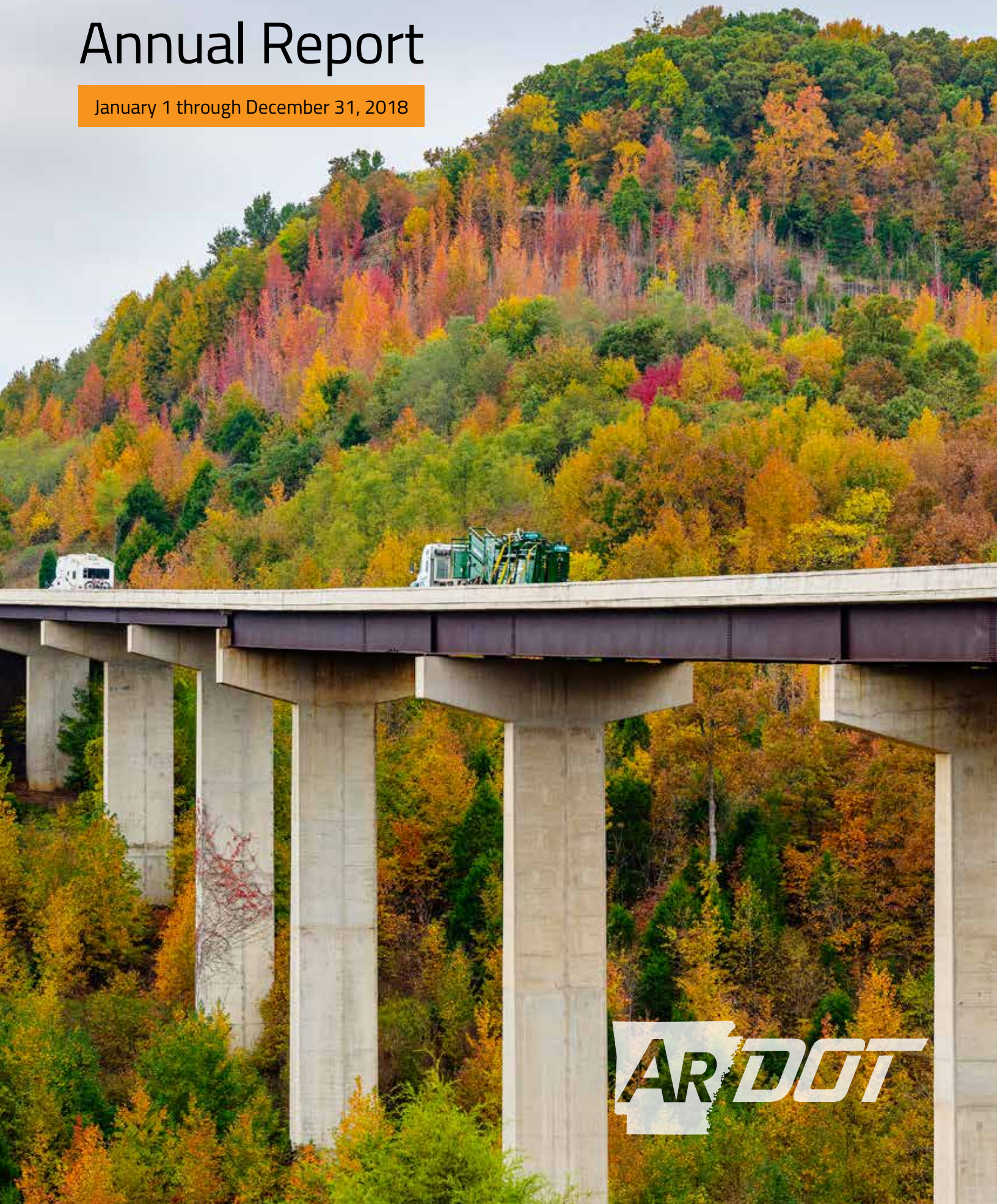
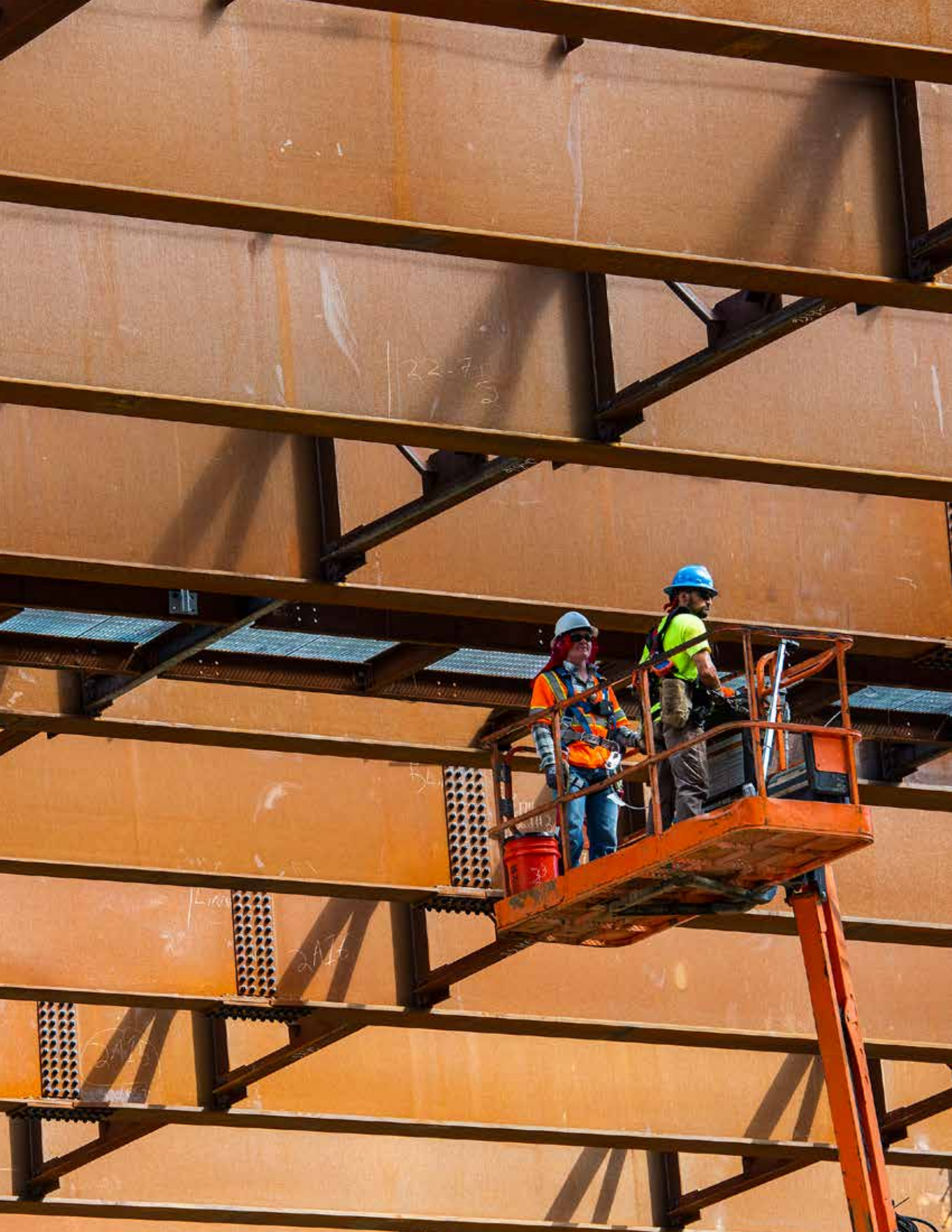


ARKANSAS DEPARTMENT OF TRANSPORTATION

Annual Report

January 1 through December 31, 2018







Contents

Welcome	5
Commission Members	6
Top 10 Contracts of 2018	8
Programs in Progress	9
Construction Highlights	10
Groundbreakings and Ribbon Cuttings	13
Public Involvement	15
Stats: Web and Social Media	16
Recognitions and Accomplishments	17
Organization and Workforce	20
District Information	22



Arkansas Department of Transportation

■ ARDOT is pleased to present our Annual Report for Calendar Year 2018. We have experienced many successes and we are proud to share the work we have accomplished in this report.

The Department let to contract 268 projects in 2018, totaling more than \$878 million. The largest of those projects is the widening of Interstate 30 in Saline County. Work also began on widening Interstate 630 between Baptist Hospital and University Avenue.

ARDOT's two major road improvement programs continued to flourish in 2018.

By December, a total of 45 projects had been completed through our Interstate Rehabilitation Program (IRP). A total of 287 miles have been improved since the program began.

The Department's Connecting Arkansas Program (CAP), funded by a temporary voter-approved half-cent sales tax, has 13 completed projects improving 70 miles of

roadway. Eleven projects continue to be under construction and 12 are scheduled for the next few years.

The hard work and dedication of the members of the Arkansas State Highway Commission and Department staff are reflected in the pages of this report.

ARDOT enthusiastically thanks the people of Arkansas for their continued support as we work to provide the best highway system possible for our motorists.



Commission Members



DICK TRAMMEL

Commission Chairman Dick Trammel, of Rogers, was appointed by Governor Mike Beebe effective January 12, 2009. In 2017, he served as Executive Vice President, member of the Board of Directors and Board Secretary of Arvest Bank, Rogers. He is past President and current member of the Board of the Rogers-Lowell Chamber of Commerce. He has served on the Rogers-Lowell United Way board and twice served as Drive Chairman. Trammel is a past President of the Rotary Club of Rogers and past Governor of Rotary International District 6110 serving parts of Arkansas, Oklahoma, Kansas and Missouri. Trammel is a founding Director, Director Emeritus and past Chairman of the Northwest Arkansas Radiation Therapy Institute. He is a charter member, past Chairman and past board member of the Board of Trustees of Northwest Arkansas Community College. His term on the Arkansas Highway Commission expired in January of 2019.



THOMAS B. SCHUECK

Commission Vice Chairman Tom Schueck, of Little Rock, was appointed by Governor Mike Beebe effective January 14, 2011. Schueck has 42 years' experience in forming and managing companies that are involved in heavy construction. Among the companies he has founded are Schueck Steel, Custom Metals, Prospect Steel, L-Con Constructors, L-Con Marine Fabricators and Heritage Golf. Schueck served most recently on the Arkansas Parks, Recreation and Travel Commission. Prior to that, he served on the Arkansas Pollution Control and Ecology Commission and the Bill and Hillary Clinton National Airport Commission. He also serves on the boards of The Nature Conservancy, UAMS Foundation and the Arkansas Industrial Development Foundation. His term on the Arkansas Highway Commission will expire in January of 2021.



ROBERT S. MOORE, JR.

Commissioner Robert S. Moore, Jr., of Arkansas City, was appointed by Governor Mike Beebe effective January 22, 2013. Moore is a three-term member of the Arkansas House of Representatives and represented the 12th District. During his time in the legislature, he served as Speaker of the House. He is Owner/Operator of Moore Farms. He had his own private law practice from 1981 to 1985. Governor David Pryor appointed Moore as chairman of the Arkansas Transportation Commission in 1977. He served on the staff of Governor Bill Clinton and served two decades as Director of the Alcoholic Beverage Control. He is a member of the American Legion, the Arkansas City Chamber of Commerce, Vice Chairman of the Desha County Historic Preservation Society and Vice Chairman of the John H. Johnson Cultural and Entrepreneurial Center Board. His term on the Arkansas Highway Commission will expire in January of 2023.



DALTON A. FARMER JR.

Commissioner Dalton A. Farmer Jr., of Jonesboro, was appointed by Governor Asa Hutchinson effective January 27, 2015. Farmer is president of Farmer Enterprises, Inc., a family-owned farm and property investment and management company. He also serves on the Board of the Childress Gin and Elevator Company, and as manager for Alec Farmer Farms, LLC. Farmer graduated with honors from Arkansas State University in 1986 with a Bachelor of Science degree. He received his Juris Doctorate degree in 1990 from the University of Arkansas at Little Rock School of Law. Farmer is a former chairman of the Arkansas Natural Resources Commission and a former special Commissioner of the Arkansas State Police Commission. He was also an original member of the Arkansas Agricultural Board. His term on the Arkansas Highway Commission will expire in January of 2025.



PHILIP TALDO

Commissioner Philip Taldo, of Springdale, was appointed by Governor Asa Hutchinson effective December 19, 2016. Taldo is broker and co-owner of Griffin Company Realtors Commercial Division and Weichert Realtors, the Griffin Company. In addition, he is the President of One Springdale, Inc., a development corporation and Partner's Construction, LLC, a residential building company and co-owner of Colonial Properties, a real estate holding and management company. His term on the Arkansas Highway Commission will expire in January of 2027.



Recent work along Interstate 630 in Little Rock

Top 10 Contracts of 2018

- Keeping Arkansas' highways in the best condition possible is always a top priority for ARDOT. Subsequently, Department crews worked on projects across the State in 2018 in order to continue improving the condition of our roadways.

Top Ten Contracts Awarded in 2018

Rank	Project	Location (County)	Award Amount
1	Interstate 30	Saline	\$187,339,930
2	Interstate 630	Pulaski	\$87,384,772
3	Interstates 40 & 540	Crawford & Sebastian	\$53,245,517
4	U.S. Highway 425	Ashley	\$44,594,956
5	Interstate 30	Clark, Hempstead & Nevada	\$39,017,513
6	U.S. Highway 167	Calhoun	\$28,964,147
7	Interstate 49	Benton	\$26,897,563
8	U.S. Highway 82	Ashley	\$26,704,205
9	State Highway 18	Craighead	\$25,182,889
10	U.S. Highway 67	Jackson & White	\$18,692,510

Total Award Amounts 2011-2018

Year	Number of Jobs	Total Amount
2011*	223	\$547,825,706*
2012**	228	\$675,023,806
2013**	238	\$619,768,056
2014***	270	\$916,223,363
2015***	198	\$670,032,37
2016***	263	\$1,212,817,332
2017***	249	\$512,101,932
2018***	268	\$878,178,920

* Totals include projects utilizing \$350 million in one-time funds from the American Recovery and Reinvestment Act of 2009.

** Includes IRP projects authorized by a November 2011 vote funded with bond proceeds.

*** Includes IRP and CAP projects authorized by a half-cent sales tax increase in 2012.



Arkansas' highway system was ranked the 12th largest system in the country in 2018 at 16,418 miles. There were also 7,335 bridges on the system.



To maintain such a large system, 268 projects totaling more than \$878 million were let to contract in 2018.

PROGRAMS IN PROGRESS

Interstate Rehabilitation Program

On November 8, 2011, Arkansans voted to allow the Arkansas Highway Commission to issue up to \$575 million in Grant Anticipation Revenue Vehicle (GARVEE) bonds to help finance improvements and repairs to existing Interstates in Arkansas.

This Interstate Rehabilitation Program (IRP) is virtually identical to the 1999 IRP, and in

combination with existing federal and state revenues, is expected to support more than \$1 billion in construction on our Interstate highways over the life of the program.

The newest program includes 78 road projects. At the close of 2018, a total of 45 IRP projects had been completed equaling 290 miles of construction at a cost of

\$997 million. Presently, there are five projects under construction at a cost of \$287 million that will, when completed, add an additional 53 miles of improvements to the total of Interstate miles completed. For the future, 27 projects are scheduled to rehabilitate an additional 158 miles. Costs for the upcoming projects total \$220 million.

Connecting Arkansas Program

In 2012, through a voter-approved constitutional amendment, the people of Arkansas passed a 10-year, half-cent sales tax to improve highways throughout the State. The resulting Connecting Arkansas Program (CAP) is one of the largest highway construction programs ever undertaken by the Arkansas Department of Transportation.

Thirty-six projects in 19 corridors will improve Arkansas' transportation system by expanding selected roadways to provide connectivity, congestion relief, promote economic development and enhance the quality of life.

In 2018, nine projects were under construction. The nine jobs are

improving 45 miles of highway at a cost of \$534 million. At year's end, 11 projects were completed improving approximately 62 miles of highway at a cost of \$431 million. A total of 12 projects remain scheduled through the year 2020, representing 51 miles of improvements.

Construction Highlights

A project that widened a section of State Highway 1 from two lanes to five lanes was completed in August. The improvements were made in Lee County between Walnut Corner and Cypress Corner. In addition to widening the roadway for 6.7 miles, improvements included one bridge and additional drainage structures. Work also included rehabilitation of the intersection of Highway 1 and U.S. Highway 49 as well as the associated traffic signal. Chancellor Brothers, LLC, was awarded the \$24.6 million contract in 2016. Administration of the improvements was by Resident Engineer Office #11 in Helena.

Counties: Crittenden, Cross, Lee, Monroe, Phillips, St. Francis and Woodruff



Crews continued to work on improvements to U.S. Highway 82 in south Arkansas in 2018. The project is widening the highway from two to five lanes east of Crossett. The widening begins at U.S. Highway 425 and extends westward to County Road 411 for a total of 5.3 miles. Johnsville Company, LLC was awarded the \$24.7 million project in November of 2016. Work is expected to be complete in early 2020.

Counties: Arkansas, Ashley, Chicot, Desha, Drew, Grant, Jefferson and Lincoln



Construction continued on a project in southwest Arkansas that is replacing the bridge on State Highway 41 over the Little River. The job is located southwest of Horatio at the Little River-Sevier County line. Crews are constructing a 1,993-foot bridge and approximately one-half mile of approaching roadways. The \$13.9 million contract was awarded in March of 2016 to the Jensen Construction Company of Des Moines, Iowa. The bridge project is located over an ecologically sensitive waterbody surrounded by ponds and sloughs. Consequently, environmental protection has been both a goal and a challenge. Those challenges including the relocation of two species of mussels and sightings of alligators in the ponds and sloughs surrounding the project. Completion date for the project is early 2019.

Counties: Hempstead, Howard, Lafayette, Little River, Miller, Nevada, Pike and Sevier



A large, slow-moving slide along the shoulder of Interstate 40 in Ozark was the focus of a \$2.3 million project awarded to Mobley Contractors, Inc. An anchor block and post tension cable retention system was designed for stabilization and repairs. It consists of 101 concrete panel blocks that were placed along the failing slope. A boring was drilled through the center of each block and into bedrock opposite the slope. A steel cable was then inserted into the bore hole and concrete grout secured it to the bedrock. Hydraulic jacks were used to pull the cable through the concrete blocks forcing the blocks into the slope. The repair work was completed with minimal disruption to traffic on the Interstate.

Counties: Crawford, Franklin, Logan, Polk, Scott, Sebastian and Washington



Two construction projects in White County completed the State Highway 13 Searcy Bypass in 2018. The first of three projects comprising the bypass was completed in 2017 and extends from State Highway 267 northward to State Highway 36 on the west side of town. In 2018, the remaining two projects were completed. The first extends from Highway 36 to State Highway 16 north of town. The second project continues from Highway 16 eastward to U.S. Highway 67 east of town. The two most recent projects total approximately eight miles and were completed at a cost of \$27.7 million. Total length of the entire Searcy bypass is approximately 13 miles.

Counties: Cleburne, Fulton, Independence, Izard, Jackson, Sharp, Stone and White



Crews completed the 18-mile widening of U.S. Highway 70 leading from Interstate 30, near Benton, to Hot Springs. The roadway now features five lanes, reconstruction of four bridges and installation of a traffic signal at State Highway 128. The contract for improvements was awarded to McGeorge Contracting Company, Inc. of Pine Bluff for \$78.5 million. Construction also began on the widening of Interstate 630 in Little Rock. A two-mile section of the roadway, between Baptist Health Medical Center and University Avenue, is being widened to eight lanes. Manhattan Road & Bridge Company was issued a work order to begin construction in May of 2018.

Counties: Garland, Hot Spring, Lonoke, Prairie, Pulaski and Saline



Improvements on U.S. Highway 82 in Magnolia continued in 2018. Approximately four miles of the two-lane highway are being widened to five lanes on the east side of town. The widening begins at U.S. Highway 79 and extends southward to County Road 525. The \$22.2 million project is expected to be completed in early 2019. In Calhoun County, two adjacent projects are widening U.S. Highway 167 to four lanes. The improvements begin just north of Hampton and extend northward for approximately 11 miles. Both projects on Highway 167 are expected to be completed by spring of 2020. In Arkadelphia, crews finished the replacement of the State Highway 51 Bridge over the Ouachita River and the Union Pacific Railroad tracks.

Counties: Bradley, Calhoun, Clark, Cleveland, Columbia, Dallas, Ouachita and Union



Construction began in early 2018 on the widening of U.S. Highway 65 in Van Buren County. The highway is being widened to five lanes beginning at Bee Branch and extending northward for eight miles to Clinton. Work is expected to be complete in the fall of 2019. Also in Van Buren County, crews resurfaced seven miles of State Highway 9. The improvements begin at the Conway County line and continue northward to U.S. Highway 65 at Choctaw. Also underway in 2018 was the replacement of two bridges on State Highway 7 in Perry County. The bridges are located south of Hollis and cross Bear Creek and South Fourche La Fave River. Work will be complete in late summer of 2019. Crews in Pope County resurfaced approximately six miles of U.S. Highway 64 in Russellville.

Counties: Conway, Faulkner, Johnson, Montgomery, Perry, Pope, Van Buren and Yell



ArDOT and Bentonville continued work on a project that is extending S.E. 8th Street eastward to Interstate 49 and constructing a new interchange on Interstate 49 at that location. Modifications are also being made to the U.S. Highway 62/State Highway 102 interchange located to the south on Interstate 49 in order to improve traffic movements at that interchange as well. Because of the close proximity to the Highway 62/102 interchange, the ramps for the new 8th Street interchange are “braided” with the Highway 62/102 ramps to keep the two streams of traffic separated. This required the construction of two short tunnels under the new 8th Street overpass that is a component of the project.

Counties: Baxter, Benton, Boone, Carroll, Madison, Marion, Newton and Searcy



Construction continues in Greene County on the U.S. Highway 412 bypass of Paragould. The project was awarded to Dumey Contracting, Inc. of Benton, Missouri, for \$12.8 million in January of 2017. Crews began work in the spring of that year. The five-mile, two-lane roadway is being constructed on new location. This project is completing the southwest section of the bypass. Improvements extend from U.S. Highway 412 on the west side of the City southward to U.S. Highway 49 on the south edge of town. Crews expect to have this section of the bypass completed in late fall of 2019.

Counties: Clay, Craighead, Greene, Lawrence, Mississippi, Poinsett and Randolph



Groundbreakings and Ribbon Cuttings

STATE HIGHWAY 13



SEARCY BYPASS

More than 60 people, including former Governor Mike Beebe, gathered on May 29 to attend the official unveiling of the Searcy Bypass. The ribbon cutting symbolized the completion of Phases II and III of the \$50 million project. Rogers Group and McGeorge Contracting completed the project ahead of schedule. The new bypass extends 13 miles and will meet needs of future growth in the area while offering safer travel for Searcy and White County.

STATE HIGHWAY 18



MANILA BYPASS

ArDOT Director Scott Bennett joined Highway Commissioner Alec Farmer in Manila on May 31 to open that City's new bypass. The \$14.5 million project widened a four-mile section of State Highway 18 from two to five lanes. Meadows Contractors began work in October 2015 and completed the project early. This project moves ArDOT a step closer to having a continuous multi-lane highway between Jonesboro and Blytheville.

U.S. HIGHWAY 412



SPRINGDALE BYPASS

A crowd of more than 150 people gathered on the newly constructed Future U.S. Highway 412, commonly known as the Springdale Bypass, to commemorate completion of its first segment. The project is part of the Connecting Arkansas Program, funded by voter approval in 2012. The \$106 million bypass connects Interstate 49 and State Highway 112. ArDOT awarded the contract to Eutaw Construction Company of Aberdeen, Mississippi, in December 2014. They began work in February 2015, putting 2.3 total miles of storm drains in place and building 14 bridges totaling 1.25 miles of the 4.5 mile stretch of four-lane, divided highway.

U.S. HIGHWAY 65



ARKANSAS WELCOME CENTER | HARRISON

A ribbon cutting on November 2 officially opened a new Arkansas Welcome Center on U.S. Highway 65 in Harrison. The new Center replaces one that had stood at the same location for 31 years. The new \$2.3 million facility was constructed by Dayco Construction of Damascus. Inside the new building, visitors will find a much larger center that features a coffee bar, a sitting area, a computer information desk and information on hundreds of places to travel in Arkansas. The Center is staffed by volunteers from the Arkansas Department of Parks and Tourism.

U.S. HIGHWAY 64



WIDENING AT CRAWFORDSVILLE

A crowd gathered in Crawfordsville on June 2 for a ribbon cutting on a newly widened section of Highway 64 in Crittenden County. ARDOT Director Scott Bennett welcomed Senator Keith Ingram, Crittenden County Judge Woody Wheelless and representatives from Governor Hutchinson's office to kick off the event. The project widened a 5.5-mile section of the highway to five lanes extending from State Highway 147 westward to County Road 375. Crisp Contractors was awarded the contract in August of 2016 for just over \$23.3 million. With completion of the project, motorists have five lanes for travel on 11.5 miles of Highway 64 between Marion and County Road 375. A future project will widen Highway 64 even farther to the west.

U.S. HIGHWAY 70



INTERSTATE 30 TO HOT SPRINGS WIDENING

With the cutting of a ribbon on June 1, U.S. Highway 70 from Interstate 30 near Benton to Hot Springs officially became a newly widened five-lane highway. ARDOT Director Scott Bennett and members of the Highway Commission joined Lieutenant Governor Tim Griffin, Hot Springs Mayor Pat McCabe and others to celebrate the completion of a project that widened 18 miles of the roadway to four lanes, added a center turn lane and reconstructed four bridges. The \$78.5 million contract was awarded to Pine Bluff's McGeorge Contracting Company, Inc., which is the company that built the original highway in the 1950s.

U.S. HIGHWAY 278



MONTICELLO BYPASS

Elected officials, chamber members and local citizens gathered to ceremoniously open the new Monticello Bypass on October 11. The bypass was constructed in two phases. Phase One was awarded to Southern Industrial Contracts of Rayville, Louisiana, for \$13.1 million and Phase Two was awarded to Pine Bluff Sand and Gravel for \$16.2 million. The project spans 8.6 miles and needed more than 100,000 tons of asphalt to complete. The U.S. Highway 278 Bypass will be an Arkansas segment of Interstate 69, one of six corridors selected by the United States Department of Transportation as a corridor of the future. Once completed, Interstate 69 will stretch more than 2,600 miles from Canada to Mexico. Highway Commissioner Robert S. Moore, Jr. of Arkansas City brought the project into perspective when he stated "We're here celebrating the first lane miles of Interstate 69 in Arkansas."

U.S. HIGHWAY 67



CABOT NORTHERN INTERCHANGE

ARDOT staff members, local dignitaries and Lieutenant Governor Tim Griffin gathered in Cabot on October 26 to cut a ribbon on the new U.S. Highway 67 interchange located on the north side of town. The City of Cabot partnered with ARDOT by providing close to \$11 million towards construction of the interchange. ARDOT provided an additional \$21 million for the project. As a result, Manhattan Road & Bridge Company began work in early 2017. "Cabot has an interchange on the south end of the city," ARDOT Director Scott Bennett told the crowd. "There is also one located midway through town. What was lacking was an interchange on the northern side of town. Not only did this community have a vision of how a new interchange could be beneficial to the area, they also came to ARDOT with a commitment. They became partners in order to make this northern interchange a reality."



Public Involvement

- Whether constructing new highways or improving existing ones, it is the role of ARDOT to provide the best highway system possible, and to keep it well maintained.

There is a great deal of planning that goes into building new roadways and that planning begins early in the process. Among the considerations are the terrain, environmental issues, existing structures in the path of a new highway, connecting roadways and construction costs.

ARDOT believes that involving citizens in communities across Arkansas is an important part of the planning process. Each year, the Department makes it a point to hold public meetings across the State. The purpose is to share design plans for new projects with local residents who, in return, share their ideas and opinions because, after all, nobody knows the area better than those that live there. Their feedback is important to the planning process.

The public meetings are also an opportunity for ARDOT staff to answer any questions residents may have and address any concerns.

Public meetings were held in Ash Flat, Barling, Batesville, Bella Vista, Benton, Bentonville, Cabot, Conway, Danville, El Dorado, Fayetteville, Flippin, Forum, Hot Springs, Huntsville, Jonesboro, Little Rock, Marion, Marked Tree, Mayflower, North Little Rock, Pickens, Piggott, Springdale, West Memphis, White Hall and Yellville.

49

MEETINGS HELD ACROSS
THE STATE IN 2018



OVER 3,500 PEOPLE ATTENDED
TO EXCHANGE INFORMATION

STATS

IDRIVEARKANSAS

Audience

922,180

number of users

25.28%

percentage of first-time visits

Engagement

5,387,234

number of pages viewed

3,847,341

number of sessions—the period of time a user is actively engaged with idrive

2.4

average session length in minutes

TWITTER @myARDOT

Audience

47,336

number of followers

3,036

number of new followers

Engagement

24,450,000

number of times tweets were seen by users

6.3%

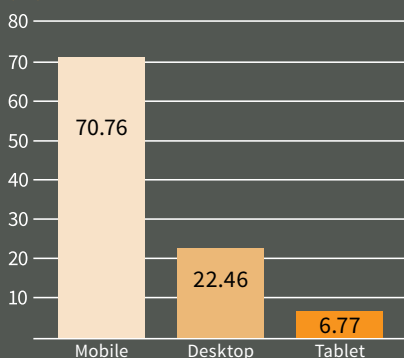
percentage of audience that retweeted, marked as a favorite or expanded our tweet

37,300

number of times the public clicked a link included in an ArDOT tweet

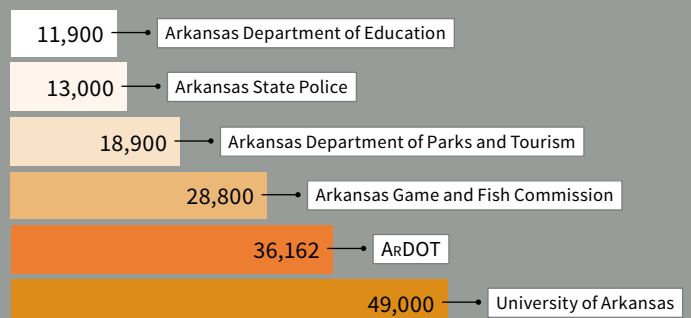
TYPE OF DEVICE USED

(%)



HOW DOES ARDOT COMPARE?

number of tweets in 2018



Recognitions and Accomplishments

ACEC Arkansas QBS Award

The Arkansas Department of Transportation received a QBS Award (Qualification-Based Selection) from the Arkansas Chapter of the American Council of Engineering Companies (ACEC). ARDOT received the award for its overall selection process. Qualification-based selection is a process for the selection of design professionals by public owners. It is a negotiated procurement process for selection based on qualifications and competence in relation to the work to be performed. The use of QBS ensures that federal and state agencies receive highly technical architect and engineering services from the most experienced and most qualified firms at a fair and reasonable cost. QBS is used by all federal agencies, 46 state governments and many localities throughout the country. The QBS Awards recognize public and private entities that make exemplary use of the QBS process. Winners serve as examples of how well the QBS process works. This was the first year that the QBS Award has been presented by the organization.

NAPA Perpetual Pavement Award

ARDOT was one of eight departments of transportation to receive a Perpetual Pavement Award from the National Asphalt Pavement Association. The award is presented to state transportation departments and local agency road owners for well-performing asphalt pavements that are at least 35 years old with proven high-quality structural design. The road must demonstrate the characteristics expected from a long-life, perpetual pavement design – excellence in design, quality in construction and value to taxpayers. The Department received the award for a four-mile section of two-lane State Highway 24 located near Camden, in Ouachita County. This is the ninth Perpetual Pavement Award for ARDOT.





Southeastern Regional Equipment Operators Roadeo

Competitors from ten Departments of Transportation from across the southeastern region of the United States converged on Rogers, Arkansas, in early September to take part in the 16th Annual Southeastern Regional Equipment Operators Roadeo.

ArDOT played host to guests from nine other states including Georgia, Kentucky, Louisiana, Mississippi, North Carolina,

South Carolina, Tennessee, Virginia and West Virginia. All are members of the Southern Association of State Highway and Transportation Officials (SASHTO).

The highlight of the Regional Roadeo each year is the equipment competition. The top winners from each DOT's statewide competition gather to lay claim to being the best of the best. Participants from each state competed in six categories

including single axle dump truck, tandem axle dump truck, tractor truck with lowboy, backhoe, tractor/mower and motor grader.

After tallying all scores, ArDOT came out on top as the 2018 Regional Champions. South Carolina finished second and Tennessee came in with the third place finish.



AASHTO Faces of Transportation Award

ArDOT staff photographer Rusty Hubbard was the winner of the 13th Annual Faces of Transportation Award from AASHTO. Hubbard won in the “People’s Choice Award” category. Online voters selected Hubbard’s photograph of the Peel Ferry crossing Bull Shoals Lake. This represents the third consecutive year that Hubbard’s work has been awarded in the competition.

NOTEWORTHY ACCOLADES



EXCELLENCE IN PROGRAM ADMINISTRATION AWARD

Joanna McFadden, head of ARDOT's Equal Employment Opportunity Section, was recognized by AASHTO. She received the Excellence in Program Administration Award at the Civil Rights Training Symposium Awards luncheon held in May in Oklahoma City.

The award recognizes and honors an individual who has administered a state department of transportation Civil Rights program in an exemplary and creative manner. It is presented to a career professional who has an exceptional ability to work with others to resolve problems, who is well respected by their peers and who consistently resolves challenging issues.



EARLY CAREER ALUMNI AWARD

The University of Arkansas College of Civil Engineering has honored Transportation Planning and Policy Division Head Jessie Jones with the Early Career Alumni Award.

The award is presented to College of Engineering graduates who are achieving distinction in their fields and show significant promise for professional leadership in state, national and international activities.

Those considered for this award have served in their industries for 15 years or less. Jones is ARDOT's second engineer to receive the award and the Department's first female recipient.

3,732

FULL-TIME, REGULAR EMPLOYEES AT THE CLOSE OF THE YEAR 2018





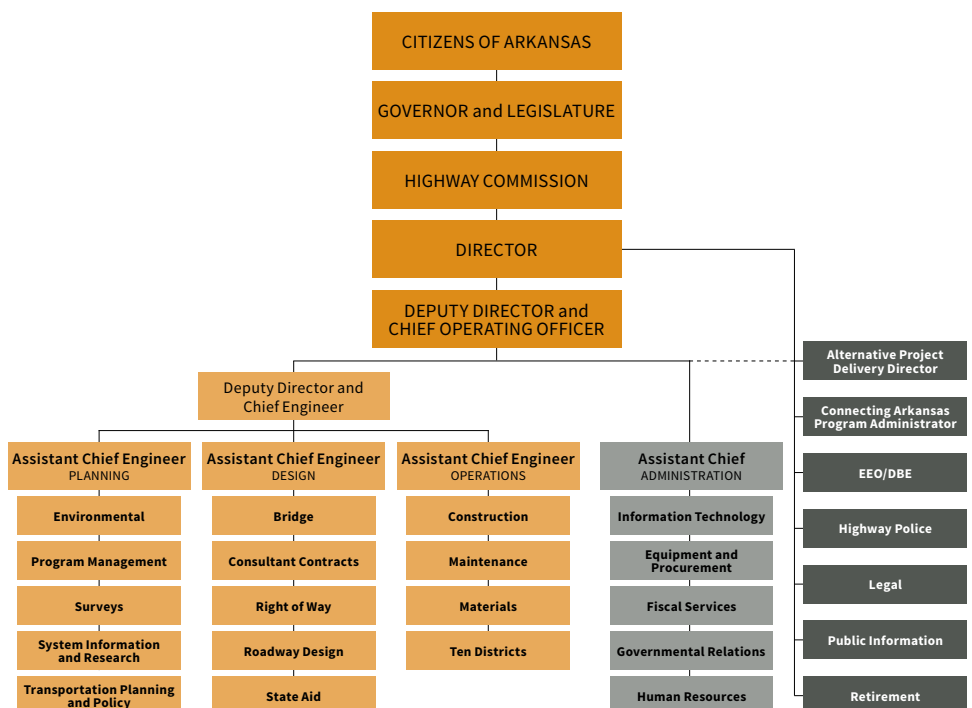
Organization and Workforce

- Dating back to the Mack-Blackwell Amendment of 1953, the goal of the Arkansas State Highway Commission and ARDOT has been to provide Arkansas with the best transportation system possible.

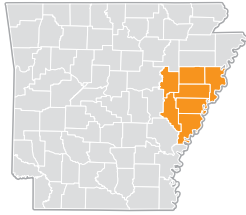
Under that amendment, each of the five Arkansas Highway Commissioners serves a 10-year, staggered term with a new commissioner appointed by the Governor every two years.

The Commission is assigned all powers necessary to fully and effectively administer Arkansas laws and regulations related to ARDOT operations.

The Department Director is appointed in order to develop a professional staff and to oversee construction and maintenance on Arkansas' highway network.



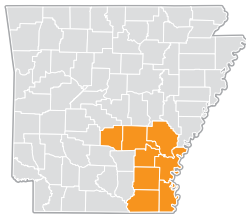
District Information



DISTRICT ONE

2701 Highway 64 • P.O. Box 278 • Wynne, AR 72396-0278
Telephone: (870) 238-8144 • Fax: (870) 238-2994
Engineer: Cannon Callicott | stephen.callicott@ardot.gov

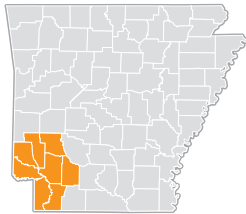
Counties: Crittenden, Cross, Lee, Monroe, Phillips, St. Francis and Woodruff



DISTRICT TWO

4900 Highway 65 South • P.O. Box 6836 • Pine Bluff, AR 71611-6836
Telephone: (870) 534-1612 • Fax: (870) 534-2038
Engineer: Deric Wyatt | deric.wyatt@ardot.gov

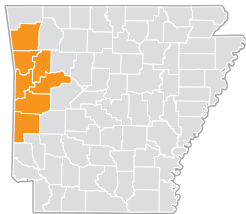
Counties: Arkansas, Ashley, Chicot, Desha, Drew, Grant, Jefferson and Lincoln



DISTRICT THREE

2911 Highway 29 North • P.O. Box 490 • Hope, AR 71802-0490
Telephone: (870) 777-3457 • Fax: (870) 777-3489
Engineer: Stephen Frisbee | steve.frisbee@ardot.gov

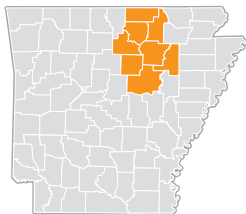
Counties: Hempstead, Howard, Lafayette, Little River, Miller, Nevada, Pike and Sevier



DISTRICT FOUR

808 Frontier Road • P.O. Box 11170 • Fort Smith, AR 72917-1170
Telephone: (479) 484-5306 • Fax: (479) 484-5300
Engineer: Chad Adams | chad.adams@ardot.gov

Counties: Crawford, Franklin, Logan, Polk, Scott, Sebastian and Washington



DISTRICT FIVE

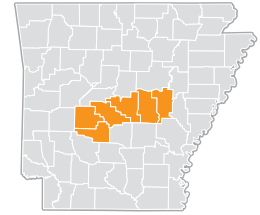
1673 Batesville Boulevard • P.O. Box 2376 • Batesville, AR 72503-2376
Telephone: (870) 251-2374 • Fax: (870) 251-2393
Engineer: Bruce Street | bruce.street@ardot.gov

Counties: Cleburne, Fulton, Independence, Izard, Jackson, Sharp, Stone and White

DISTRICT SIX

8900 Mabelvale Pike • P.O. Box 190296 • Little Rock, AR 72219-0296
Telephone: (501) 569-2266 • Fax: (501) 569-2366
Engineer: Mark Headley | mark.headley@ardot.gov

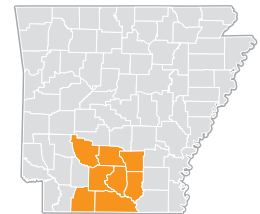
Counties: Garland, Hot Spring, Lonoke, Prairie, Pulaski and Saline



DISTRICT SEVEN

2245 California Avenue • P.O. Box 897 • Camden, AR 71711-0897
Telephone: (870) 836-6401 • Fax: (870) 836-4864
Engineer: David Archer | david.archer@ardot.gov

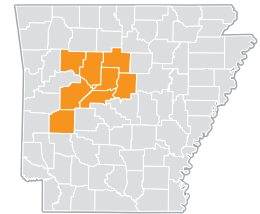
Counties: Bradley, Calhoun, Clark, Cleveland, Columbia, Dallas, Ouachita and Union



DISTRICT EIGHT

372 Aspen Lane • P.O. Box 70 • Russellville, AR 72811-0070
Telephone: (479) 968-2286 • Fax: (479) 968-4006
Engineer: Jason Hughey | jason.hughey@ardot.gov

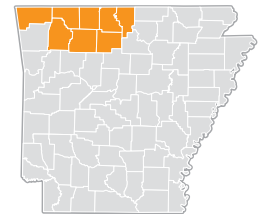
Counties: Conway, Faulkner, Johnson, Montgomery, Perry, Pope, Van Buren and Yell



DISTRICT NINE

4590 Highway 65 • P.O. Box 610 • Harrison, AR 72602-0610
Telephone: (870) 743-2100 • Fax: (870) 743-4630
Engineer: Steve Lawrence | steve.lawrence@ardot.gov

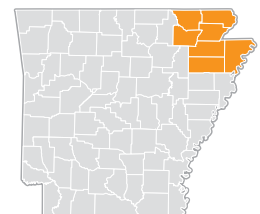
Counties: Baxter, Benton, Boone, Carroll, Madison, Marion, Newton and Searcy



DISTRICT TEN

2510 Highway 412 West • P.O. Box 98 • Paragould, AR 72451-0098
Telephone: (870) 239-9511 • Fax: (870) 236-1156
Engineer: Brad Smithee | brad.smithee@ardot.gov

Counties: Clay, Craighead, Greene, Lawrence, Mississippi, Poinsett and Randolph





Arkansas Department of Transportation
10324 Interstate 30
P.O. Box 2261
Little Rock, AR 72203-2261
(501) 569-2000
www.ArDOT.gov
www.IDriveArkansas.com