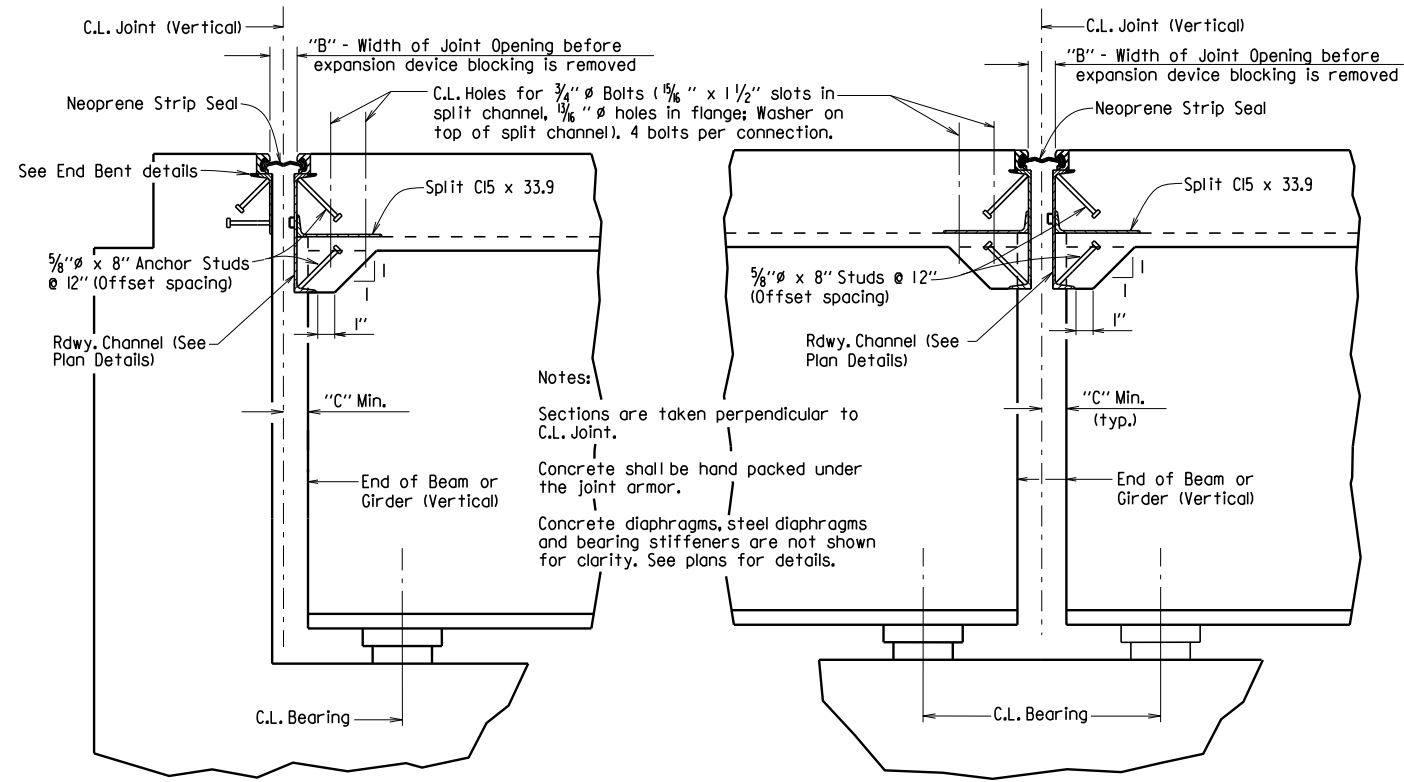
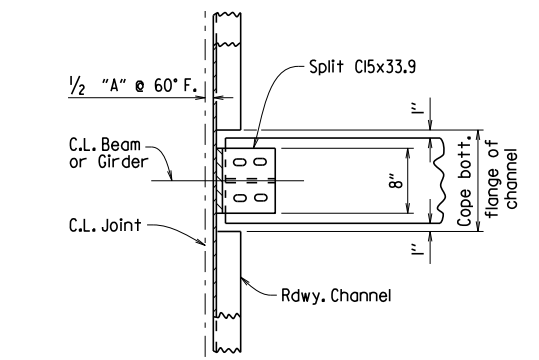


DATE REVISED	DATE FILMED	DATE REVISED	DATE FILMED	FED. ROAD DIST. NO.	STATE	FED. AID PROJ. NO.	SHEET NO.	TOTAL SHEETS
				6	ARK.			
JOB NO.							STRIP SEAL JOINT	55009

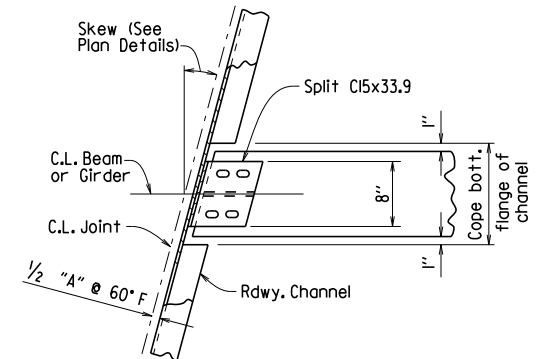


SECTION THRU JOINT AT END BENT

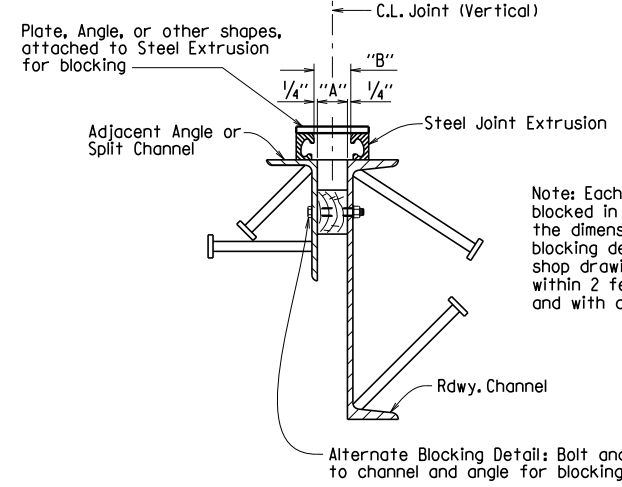
SECTION THRU JOINT AT INTERMEDIATE BENT



CHANNEL CONNECTION DETAIL



CHANNEL CONNECTION DETAIL



DETAILS FOR BLOCKING EXPANSION JOINT DEVICE

EXPANSION DEVICE INSTALLATION AT END BENTS:

The Contractor may elect to install the expansion device using one of the following two alternatives:

- 1) The concrete span pour adjacent to joint shall be placed before the end bent backwall is placed. After the end bent backwall forms are in place and the beams or girders erected, the blocked expansion device shall be installed and adjusted for grade. All connection bolts shall be fully tightened prior to placing the deck concrete adjacent to the bent. Immediately prior to pouring the backwall concrete, the blocking shall be removed, and the opening adjusted for temperature and grade.
- 2) The backwall shall be poured to the optional construction joint after beams or girders are erected. The blocked expansion device shall be installed and adjusted for grade. All connection bolts shall be fully tightened prior to placing the deck concrete adjacent to the bent. Immediately prior to pouring the remainder of the backwall concrete, the blocking shall be removed and the opening adjusted for temperature and grade.

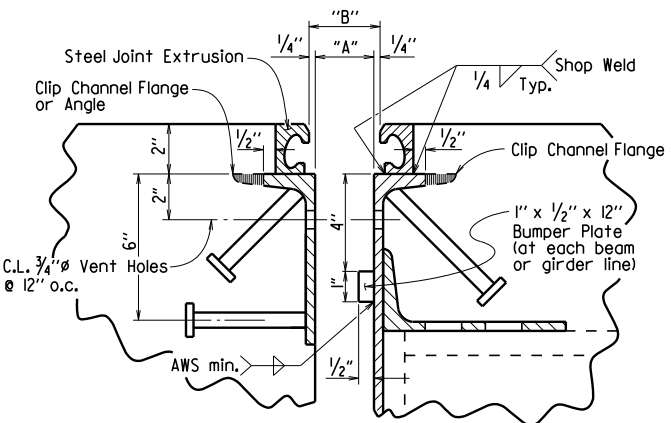
EXPANSION DEVICE INSTALLATION AT INTERMEDIATE BENTS:

After all beams or girders on each side of the joint are erected the blocked expansion device shall be installed and adjusted for grade. Deck concrete shall be placed for the entire unit or span on one side of the joint before deck concrete on the other side is placed. Connection bolts for the first side to have deck concrete placed shall be completely bolted. Bolts on the other side shall be loosely installed so that thermal and rotational movements will not be restricted during concrete placement on the first side.

Connection bolts on the second side shall remain loose until the concrete pour adjacent to the joint is to be placed. Immediately prior to pouring the span concrete on the second side, the blocking shall be removed, the joint adjusted for temperature and grade, and the connection bolts tightened.

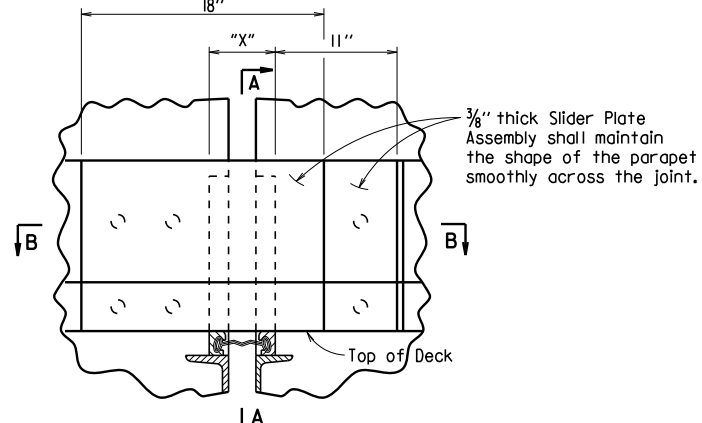
SECTION AND SUBSECTION REFER TO THE ARKANSAS STATE HIGHWAY AND TRANSPORTATION DEPARTMENT STANDARD SPECIFICATIONS FOR HIGHWAY CONSTRUCTION (2014 EDITION).

THESE DETAILS ARE APPLICABLE UNLESS OTHERWISE SHOWN IN THE PLAN DETAILS, SPECIAL PROVISIONS, OR SUPPLEMENTAL SPECIFICATIONS. SEE "TABLE OF STRIP SEAL JOINT DATA" IN PLAN DETAILS FOR VARIABLES "A", "B", AND "C".



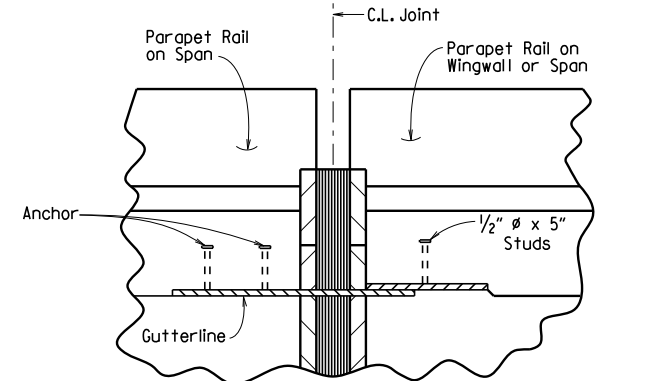
DETAIL OF STRIP SEAL JOINT

Detail shown at End Bent, Details similar at Intermediate Bent



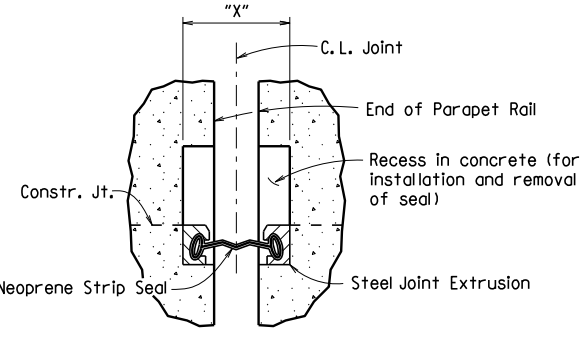
DETAIL OF PARAPET SLIDER PLATES

Dimension "X" equals the width of opening in parapet to allow for removal or repair of joint.

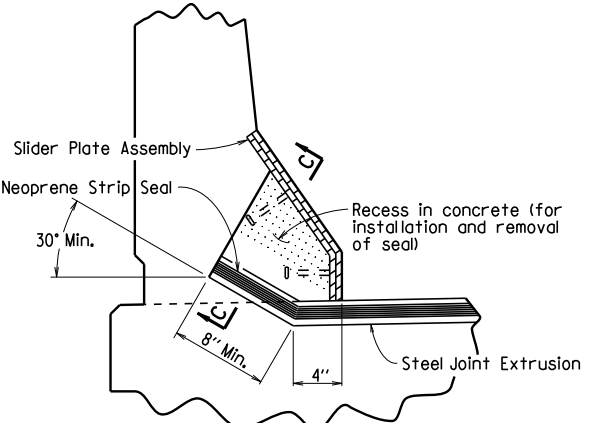


SECTION B-B

BENTS WITHOUT SKEW SHOWN



SECTION C-C



SECTION A-A

Details of joint turn-up in parapet are general and show basic design controls only. See plan details for joint installation at sidewalks.

GENERAL NOTES FOR NEOPRENE STRIP SEAL JOINTS:

The steel extrusion and neoprene strip seal material and installation shall be in accordance with Section 809.

The expansion device shall provide for the movement rating(s) shown in the "TABLE OF STRIP SEAL JOINT DATA" in the plan details. The expansion joint shall be capable of sealing the deck surface and parapet area to prevent moisture and other contaminants from descending through the joint.

Details of proposed slider plate assembly shall be submitted to the Engineer for approval prior to the fabrication of any structural steel at the expansion device.

All structural steel shall conform to AASHTO M 270, Grade 50W and all exposed surfaces shall be cleaned in accordance with Subsection 807.84(e). The parapet slider plates and structural steel completely embedded in concrete shall conform to AASHTO M 270, Grade 36, 50 or 50W steel. Unless otherwise noted in the plans, all exposed surfaces of the parapet slider plates shall be cleaned and painted in accordance with Section 638. Painting shall not be paid for directly and structural steel completely embedded in concrete need not be painted. Payment for structural steel shall be as specified in the plans.

STANDARD DETAILS FOR NEOPRENE STRIP SEAL JOINTS

ARKANSAS STATE HIGHWAY COMMISSION

LITTLE ROCK, ARK.

DRAWN BY: L.J.B. DATE: 2/11/2016 FILENAME: b55009.dgn  
 CHECKED BY: A.M.S. DATE: 2/11/2016 SCALE: No Scale  
 DESIGNED BY: STD. DATE: —

DRAWING NO. 55009