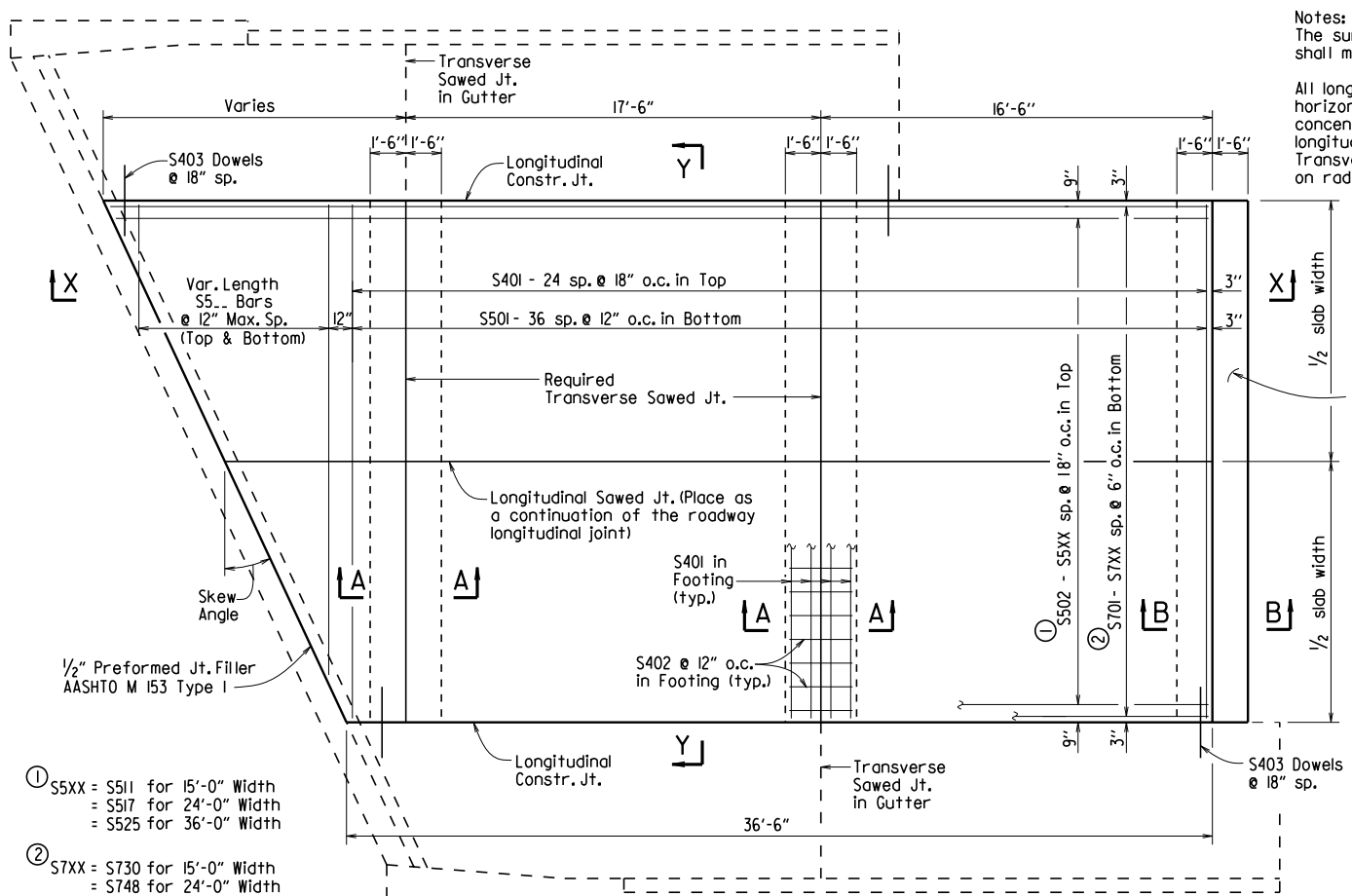


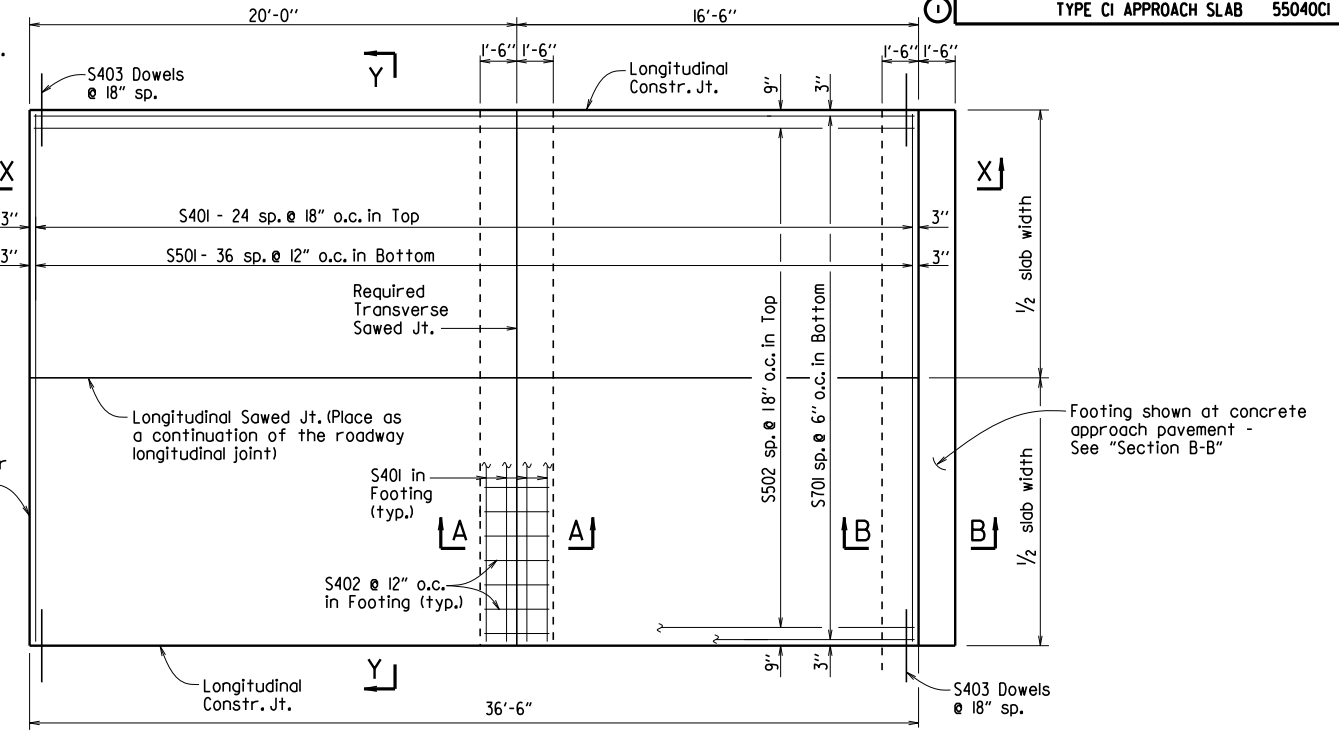
DATE REVISED	DATE FILMED	DATE REVISED	DATE FILMED	FED. ROAD DIST. NO.	STATE	FED. AID PROJ. NO.	SHEET NO.	TOTAL SHEETS
				6	ARK.			
				JOB NO.		TYPE CI APPROACH SLAB 55040CI		

Notes:
The surface finish for Approach Slabs shall match that used on the bridge deck.
All longitudinal lines within the limits of horizontal curves shall be on curves concentric to C.L. Bridge. Adjustment to longitudinal bar lengths may be required. Transverse reinforcing shall be placed on radial lines to C.L. Bridge.



- ① S5XX = S511 for 15'-0" Width
= S517 for 24'-0" Width
= S525 for 36'-0" Width
- ② S7XX = S730 for 15'-0" Width
= S748 for 24'-0" Width
= S772 for 36'-0" Width

PLAN - SKEWED APPROACH SLAB WITH APPROACH GUTTERS
1/4" = 1'-0"



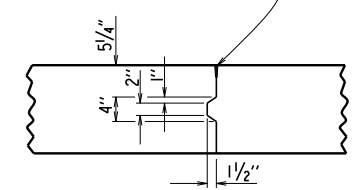
PLAN - SQUARE APPROACH SLAB

BAR LIST
(Square & Skewed Approach Slabs)

Slab Width	Square			Skewed		
	Mark	No. Req'd.	Length	Mark	No. Req'd.	Length
15'-0"	S401	33	14'-8"	S401	37	14'-8"
	S402	30	2'-8"	S402	45	2'-8"
	S403	50	3'-0"	S403	*	3'-0"
	S501	37	14'-8"	S501	37	14'-8"
	S502	10	36'-2"	S502	—	—
	S502 - S511	—	—	S502 - S511	1 Ea.	36.1' + 0.75' (tan skew angle) to 36.1' + 14.25' (tan skew angle)
	S5... S701	—	—	S5... S701	2 Ea.	14.7' - 0.75' / (tan skew angle) to 2'-0" Min.
24'-0"	S401	33	23'-8"	S401	37	23'-8"
	S402	48	2'-8"	S402	72	2'-8"
	S403	50	3'-0"	S403	*	3'-0"
	S501	37	23'-8"	S501	37	23'-8"
	S502	16	36'-2"	S502	—	—
	S502 - S517	—	—	S502 - S517	1 Ea.	36.1' + 0.75' (tan skew angle) to 36.1' + 23.25' (tan skew angle)
	S5... S701	—	—	S5... S701	2 Ea.	23.7' - 0.75' / (tan skew angle) to 2'-0" Min.
36'-0"	S401	33	35'-8"	S401	37	35'-8"
	S402	72	2'-8"	S402	108	2'-8"
	S403	50	3'-0"	S403	*	3'-0"
	S501	37	35'-8"	S501	37	35'-8"
	S502	24	36'-2"	S502	—	—
	S502 - S525	—	—	S502 - S525	1 Ea.	36.1' + 0.75' (tan skew angle) to 36.1' + 35.25' (tan skew angle)
	S5... S701	—	—	S5... S701	2 Ea.	35.7' - 0.75' / (tan skew angle) to 2'-0" Min.
36'-0"	S701	72	36'-2"	S701	—	—
	S701 - S748	—	—	S701 - S748	1 Ea.	36.1' + 0.25' (tan skew angle) to 36.1' + 23.75' (tan skew angle)
	S701 - S772	—	—	S701 - S772	1 Ea.	36.1' + 0.25' (tan skew angle) to 36.1' + 35.75' (tan skew angle)

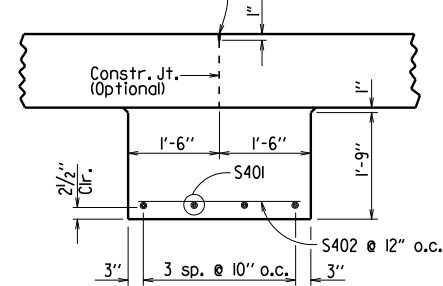
* Varies with skew angle

1/2" x 1" Poured Jt. Sealer (Type 3 or 4) per Subsection 501.02(h)(2) Backer rod is not required.



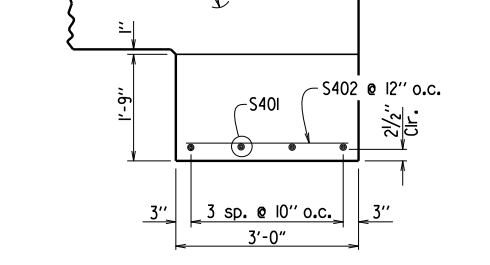
DETAILS OF LONGITUDINAL CONSTRUCTION JOINT
3/4" = 1'-0"

1/2" x 1" Poured Jt. Sealer (Type 3 or 4) per Subsection 501.02(h)(2) Backer rod is not required.



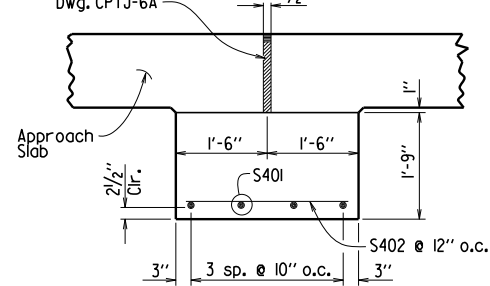
SECTION A-A
N.T.S.

Seal expansion joint according to details shown on Std. Dwg. CPTJ-6A



SECTION B-B
AT ASPHALT APPROACH PAVEMENT
N.T.S.

Seal expansion joint according to details shown on Std. Dwg. CPTJ-6A

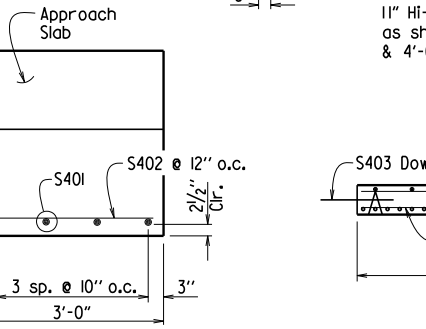


SECTION B-B
AT CONCRETE APPROACH PAVEMENT
N.T.S.

1/2" Preformed Jt. Filler AASHTO M 153 Type I

1/2" x 1" Poured Jt. Sealer (Type 3 or 4) per Subsection 501.02(h)(2)

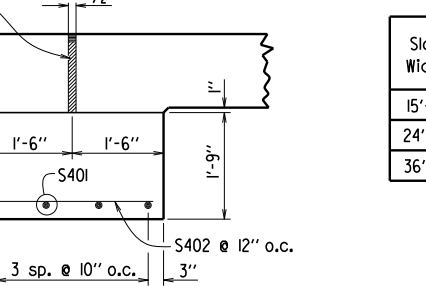
11" Hi-Chairs placed as shown longitudinal & 4'-0" max. transverse



SECTION X-X
SQUARE APPROACH SLAB SHOWN
1/4" = 1'-0"

1/2" Preformed Jt. Filler AASHTO M 153 Type I

1/2" x 1" Poured Jt. Sealer (Type 3 or 4) per Subsection 501.02(h)(2)



SECTION Y-Y
N.T.S.

TABLE OF QUANTITIES FOR ONE SQUARE APPROACH SLAB
(FOR INFORMATION ONLY)

Slab Width	Reinforcing Steel (Lbs.)	Concrete (Cu. Yds.)
15'-0"	3640	30.75
24'-0"	5775	49.15
36'-0"	8620	73.75

GENERAL NOTES
This drawing shall be used for Approach Slabs in Seismic Performance Zone 1 and for the maximum skew angles shown below:

- 15'-0" Slab Width: Maximum Skew Angle = 50°
- 24'-0" Slab Width: Maximum Skew Angle = 40°
- 36'-0" Slab Width: Maximum Skew Angle = 30°

All concrete shall be Class S (AE) with a minimum 28 day compressive strength f'c = 4,000 psi and shall be poured in the dry.

All reinforcing steel shall be Grade 60 (yield strength = 60,000 psi) conforming to AASHTO M 31 or M 322, Type A, with mill test reports.

Approach Slabs will be measured and paid for in accordance with Section 504.

STANDARD DETAILS FOR TYPE CI APPROACH SLAB
ARKANSAS STATE HIGHWAY COMMISSION
LITTLE ROCK, ARK.

DRAWN BY: A.M.S. DATE: 2/27/2014 FILENAME: b55040cl.dgn
CHECKED BY: K.W.Y. DATE: 2/27/2014 SCALE: AS SHOWN
DESIGNED BY: STD. DATE: