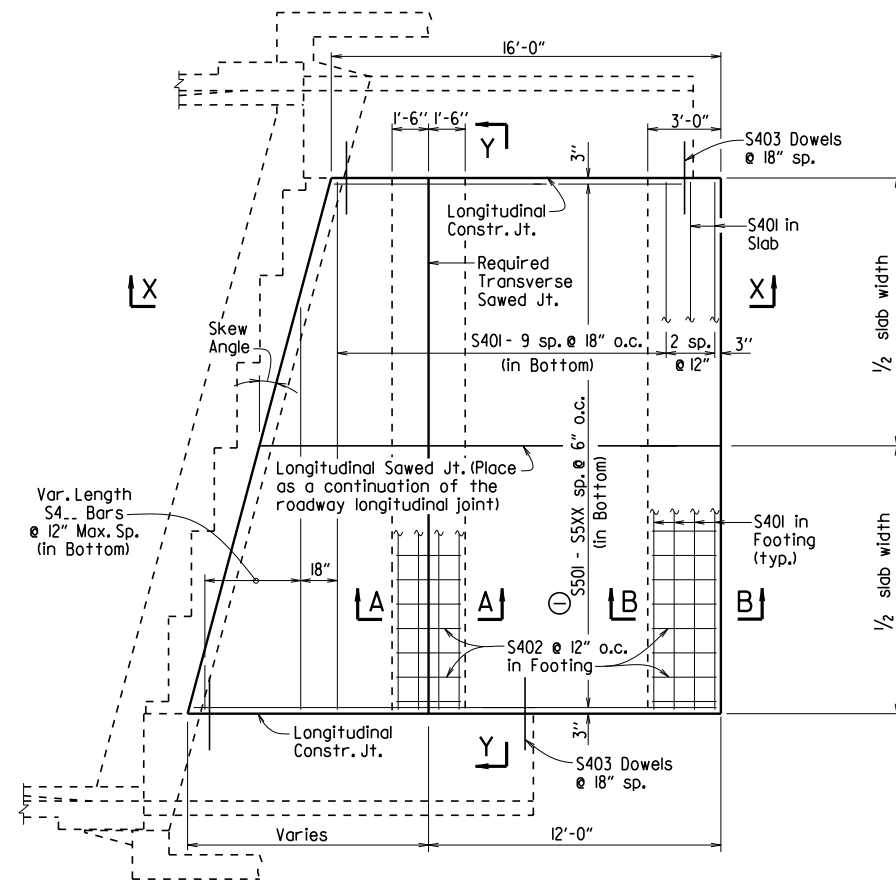


DATE REVISED	DATE FILMED	DATE REVISED	DATE FILMED	FED. ROAD DIST. NO.	STATE	FED. AID PROJ. NO.	SHEET NO.	TOTAL SHEETS
				6	ARK.			
				JOB NO.		TYPE D APPROACH SLAB		55040D



PLAN - SKEWED APPROACH SLAB WITH APPROACH GUTTERS

1/4" = 1'-0"

BAR LIST

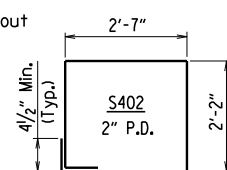
(Square & Skewed Approach Slabs)

Slab Width	Square		Skewed		
	Mark	No. Req'd.	Length	No. Req'd.	Length
20'-0"	S401	16	19'-8"	20	19'-8"
	S402	20	9'-10"	40	9'-10"
	S403	22	3'-0"	*	3'-0"
	S4..	—	—	1 Ea.	19.7' - 1.25'/(tan skew angle) to 2'-0" Min.
	S501	40	15'-8"	—	—
22'-0"	S401	16	21'-8"	20	21'-8"
	S402	22	9'-10"	44	9'-10"
	S403	22	3'-0"	*	3'-0"
	S4..	—	—	1 Ea.	21.7' - 1.25'/(tan skew angle) to 2'-0" Min.
	S501	44	15'-8"	—	—
24'-0"	S401	16	23'-8"	20	23'-8"
	S402	24	9'-10"	48	9'-10"
	S403	22	3'-0"	*	3'-0"
	S4..	—	—	1 Ea.	23.7' - 1.25'/(tan skew angle) to 2'-0" Min.
	S501	48	15'-8"	—	—
24'-0"	S501 - S548	—	—	1 Ea.	15.6' + 0.25' (tan skew angle) to 15.6' + 23.75' (tan skew angle)

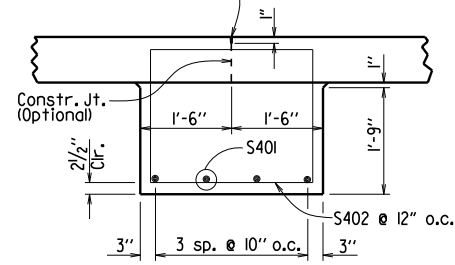
*Varies with skew angle

Bending Diagram

Dimensions are out to out of bar.



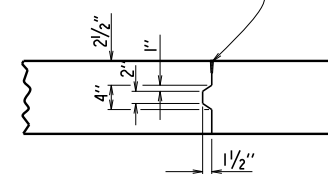
1/2" x 1" Poured Jt. Sealer (Type 3 or 4) per Subsection 501.02(h)(2) Backer rod is not required.



SECTION A-A

N.T.S.

1/2" x 1" Poured Jt. Sealer (Type 3 or 4) per Subsection 501.02(h)(2) Backer rod is not required.



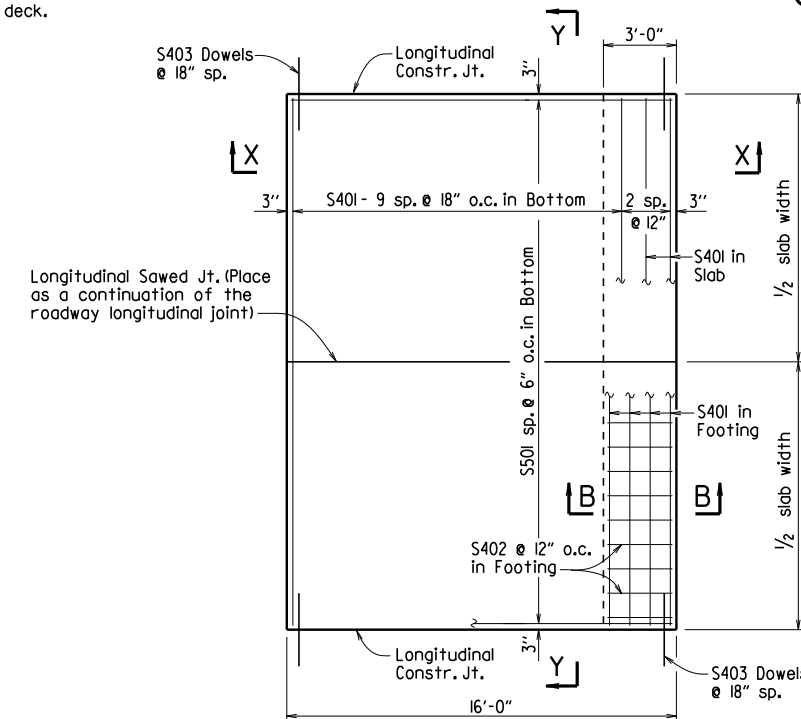
DETAILS OF LONGITUDINAL CONSTRUCTION JOINT

1" = 1'-0"

TABLE OF QUANTITIES FOR ONE SQUARE APPROACH SLAB

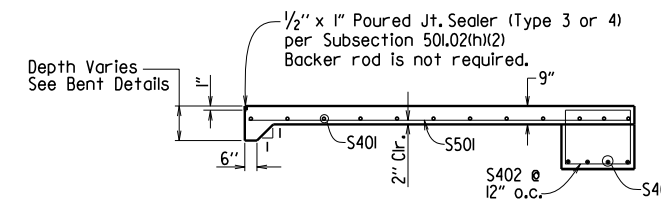
(FOR INFORMATION ONLY)

Slab Width	Reinforcing Steel (Lbs.)	Concrete (Cu. Yds.)
20'-0"	1040	13.35
22'-0"	1140	14.65
24'-0"	1240	16.00



PLAN - SQUARE APPROACH SLAB

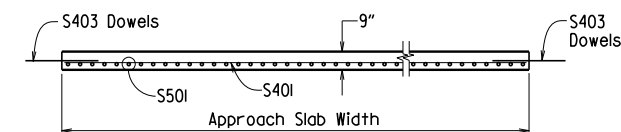
1/4" = 1'-0"



SECTION X-X

SQUARE APPROACH SLAB SHOWN

1/4" = 1'-0"



SECTION Y-Y

N.T.S.

GENERAL NOTES

This drawing is for use with Precast Concrete Spans in Seismic Performance Zones 2, 3 & 4.

All concrete shall be Class S (AE) with a minimum 28 day compressive strength $f'c = 4,000$ psi and shall be poured in the dry.

All reinforcing steel shall be Grade 60 (yield strength = 60,000 psi) conforming to AASHTO M 31 or M 322, Type A, with mill test reports.

Approach Slabs will be measured and paid for in accordance with Section 504.

STANDARD DETAILS FOR TYPE D APPROACH SLAB
ARKANSAS STATE HIGHWAY COMMISSION

LITTLE ROCK, ARK.

DRAWN BY: A.M.S. DATE: 2/27/2014 FILENAME: b55040d.dgn
CHECKED BY: K.W.Y. DATE: 2/27/2014 SCALE: AS SHOWN
DESIGNED BY: STD. DATE:

DRAWING NO. 55040D