

INFORMATION RELEASE



Office of the Director

ARKANSAS STATE HIGHWAY AND TRANSPORTATION DEPARTMENT
P. O. Box 2261 – Little Rock, Arkansas Telephone (501) 569-2227

Contact:
Randy Ort/David Nilles

NR12-132
September 25, 2012

AHTD IDENTIFIES PREFERRED ALTERNATIVE FOR HIGHWAYS 326 AND 124 IN RUSSELLVILLE

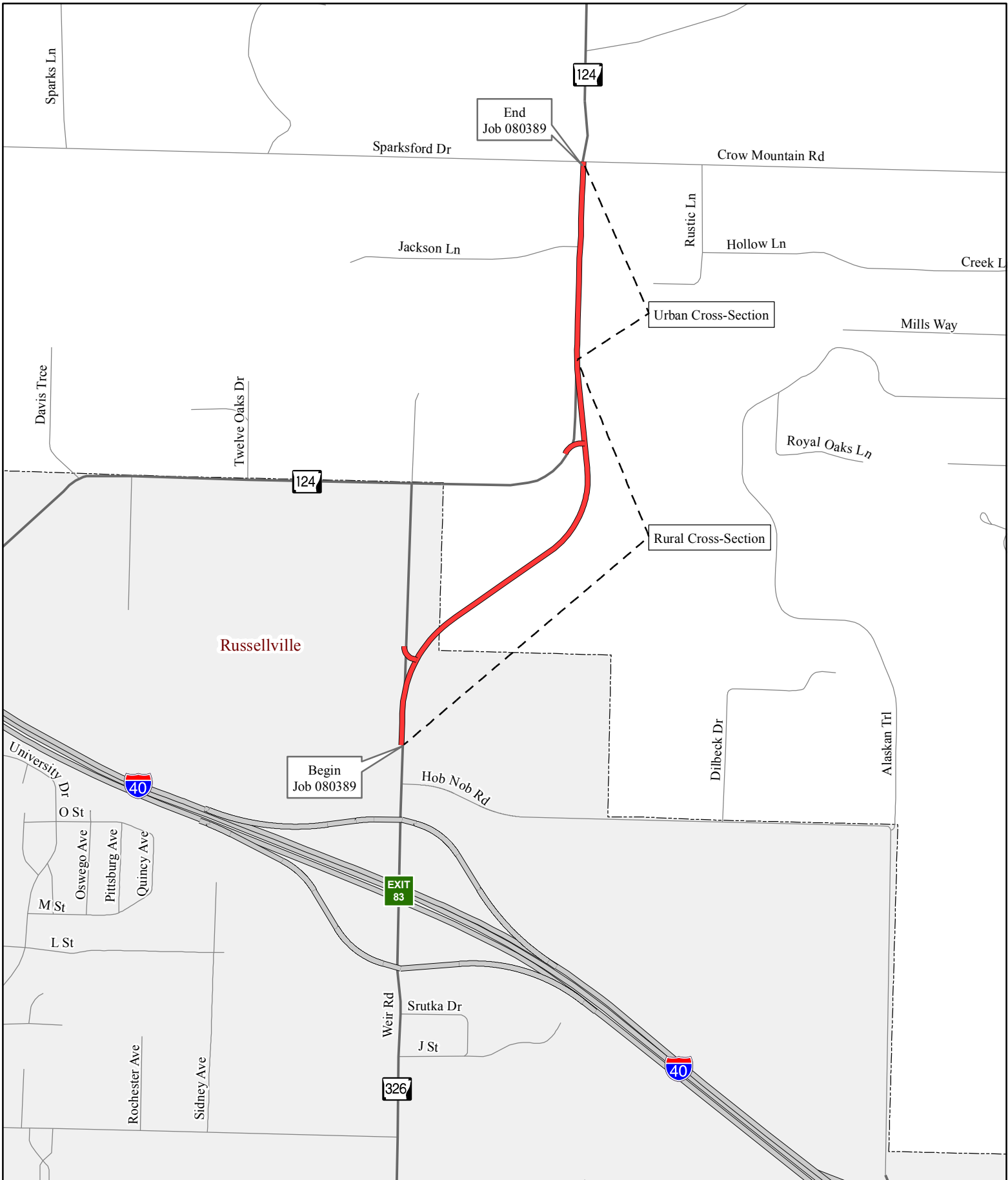
LITTLE ROCK (9-25) -- The Arkansas State Highway and Transportation Department (AHTD), in conjunction with the Federal Highway Administration, has evaluated the four alternatives analyzed in an Environmental Assessment for the proposed improvements to portions of Highways 326 and 124 between Hob Nob Road and Crow Mountain Road in Pope County. This information was presented at a Location and Design Public hearing in Russellville on August 2, 2012.

After consideration of the information, and the comments received at the public hearing, the AHTD has identified Alternative 4 as the Preferred Alternative (see map).

The Preferred Alternative would widen Highway 326 from Hob Nob Road along the existing highway for approximately 0.1 mile before turning northeast on new alignment for approximately 0.6 mile. It connects to Highway 124 and follows along the existing roadway for approximately 0.3 mile to the intersection with Crow Mountain Road. Total length of the Preferred Alternative is 1.0 mile.

Two different cross-sections, including rural and urban designs, will be used on different portions of the Preferred Alternative. Proposed improvements in the urban section would consist of four 11-foot wide travel lanes, a 12-foot wide turn lane, curb and gutter, and five-foot wide sidewalks. The rural section would consist of four 12-foot wide travel lanes, an 11-foot wide flush median and 8-foot wide shoulders.

The Preferred Alternative meets the primary purpose and need of the project by improving the flow of traffic through the study area, and it will successfully carry the projected traffic volumes for the next 20 years. It would have the fewest relocatees and the lowest cost. Sections of Highways 124 and 326 will be removed from the state highway system after this project is constructed, and maintenance of these sections will be taken over by the City of Russellville.



Russellville


Begin
Job 080389

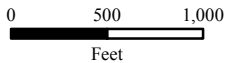
End
Job 080389

Urban Cross-Section

Rural Cross-Section

Job 080389
Hob Nob Rd. - Crow Mtn. Rd.
(Russellville) (Hwys. 124/326)
Pope County

 Preferred Alternative



Feet
Job 080389
September 19, 2012
AHTD - Environmental GIS - Strawn