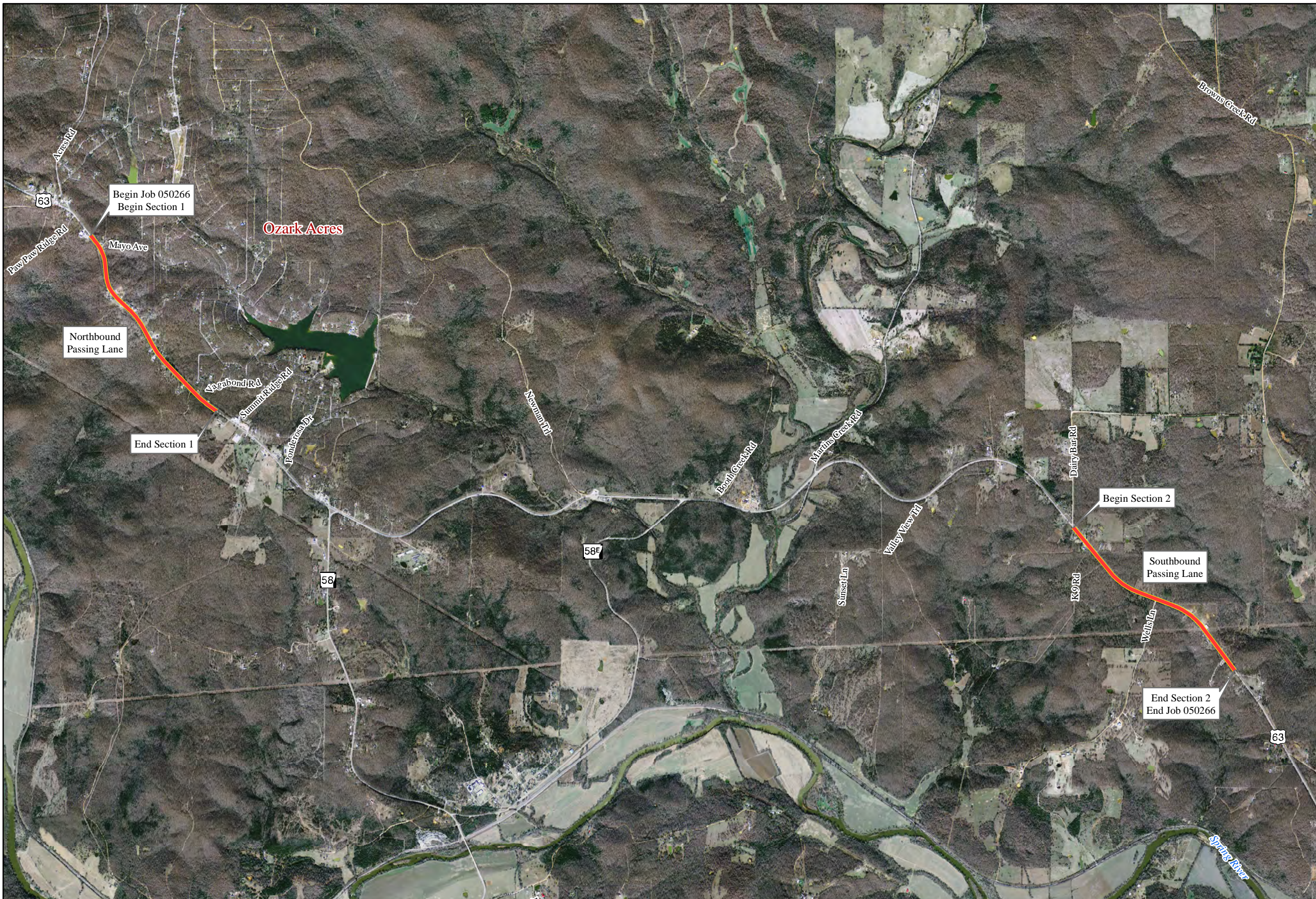


Notes: _____

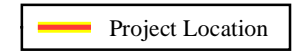


0 1,500 3,000
Feet
AHTD Environmental GIS - Strawn
Map Date: August 27, 2013
Meeting Date: September 3, 2013
Public Involvement Meeting Handout



Job 050266
Hardy - East (Passing Lanes)
(Hwy. 63)
Sharp County

Preliminary
Subject to Revision



Photography Date: ADOP 2005