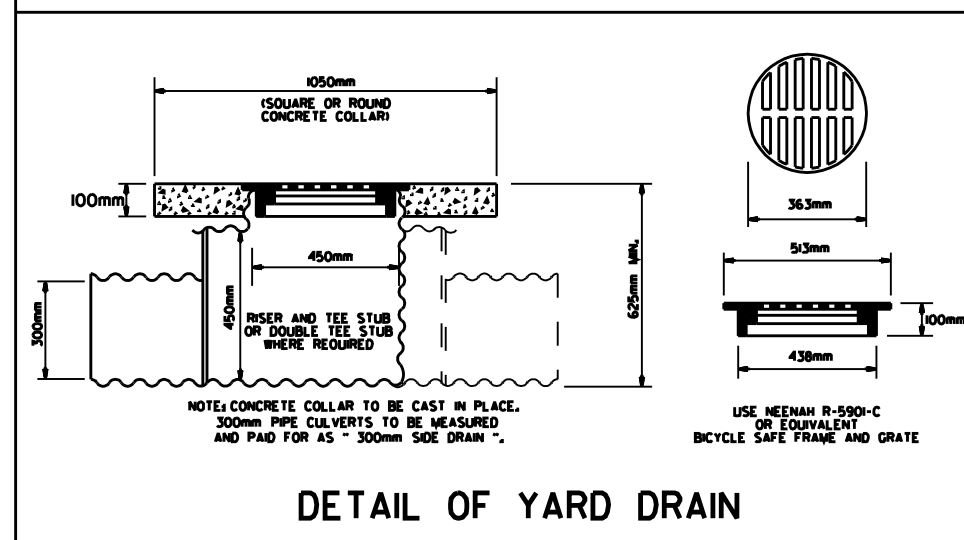
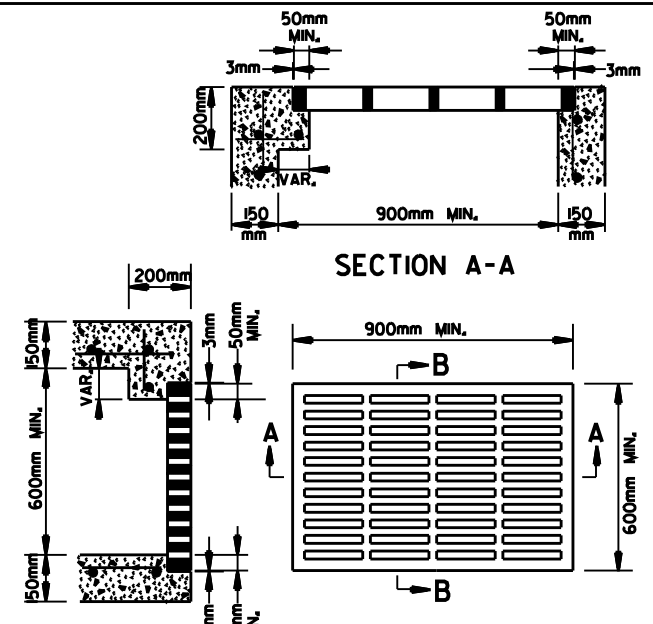
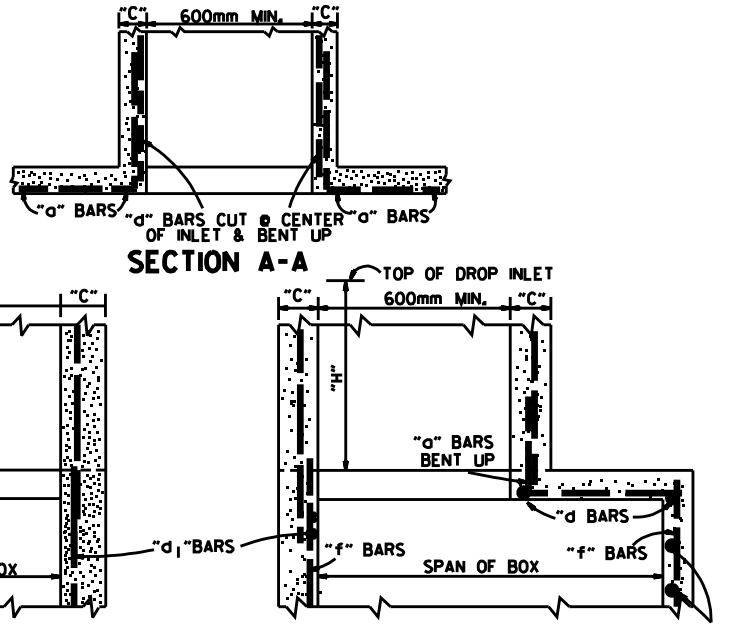


**METHOD OF CONSTRUCTING DROP INLET ON EXISTING R.C. BOX CULVERT**

**HEAVY DUTY RING & COVER**

**JUNCTION BOX (TYPE E)**



- GENERAL NOTES:**
1. ALL EXPOSED CORNERS SHALL BE 19mm CHAMFERED.
  2. STEPS SHALL BE INSTALLED ON 400mm CENTERS ON ALL INLETS 1200mm HIGH OR OVER, OR AS APPROVED BY THE ENGINEER.
  3. EXPANSION JOINT MATERIAL SHALL BE 19mm PREFORMED FIBER.
  4. GRATE OR GRATE AND FRAME SHALL BE CONSTRUCTED OF CAST IRON AND SHALL CONFORM TO THE REQUIREMENTS OF THE STANDARD SPECIFICATIONS FOR GRAY IRON CASTINGS AASHTO M 105 CLASS 35B. GRATE MAY BE USED WITHOUT FRAME.
  5. GRATE AND FRAME SHALL NOT BE PAINTED.
  6. GRATE SHALL BE BICYCLE SAFE.
  7. HEAVY DUTY RING SHALL ALWAYS BE INSTALLED WITH FLANGE ON TOP.
  8. HEAVY DUTY RING AND COVER SHALL BE CONSTRUCTED OF CAST IRON AND SHALL CONFORM TO THE REQUIREMENTS OF THE STANDARD SPECIFICATIONS FOR GRAY IRON CASTINGS AASHTO M105 CLASS 35B & AASHTO M306.
  9. HEAVY DUTY RING AND COVER SHALL NOT BE PAINTED.
  10. DIMENSIONS SHOWN FOR RING AND COVER ARE TYPICAL. THE CONTRACTOR MAY SUBSTITUTE SIMILAR CASTINGS WITH THE APPROVAL OF THE ENGINEER, REQUESTING APPROVAL FOR CASTING DESIGNS MAY BE MADE BY REFERRING TO PREVIOUSLY APPROVED DRAWINGS.

**METHOD OF CONSTRUCTING DROP INLET ON NEW R.C. BOX CULVERT**

**GRATE FOR TYPE E DROP INLET**

**DETAIL OF YARD DRAIN**

**ARKANSAS STATE HIGHWAY COMMISSION  
DETAILS OF DROP INLETS  
& JUNCTION BOXES**

DATE	REV.	REVISION	DATE FILMED
11-16-01		ADDED NOTE 10	
1-12-00		REVISED HEAVY DUTY RING AND COVER	
7-02-98		CHANGED GRATE DETAIL, DELETED D (TYPE D), REPLACED RING & COVER W/ HEAVY DUTY RING & COVER, ADDED JUNCTION BOXES (TYPE E)	7-02-98
4-3-97		REVISED STEEL BARS TO SOFT METRIC	4-3-97
10-18-96		ADDED DETAIL OF YARD DRAIN	
7-20-95		CONVERTED TO METRIC	