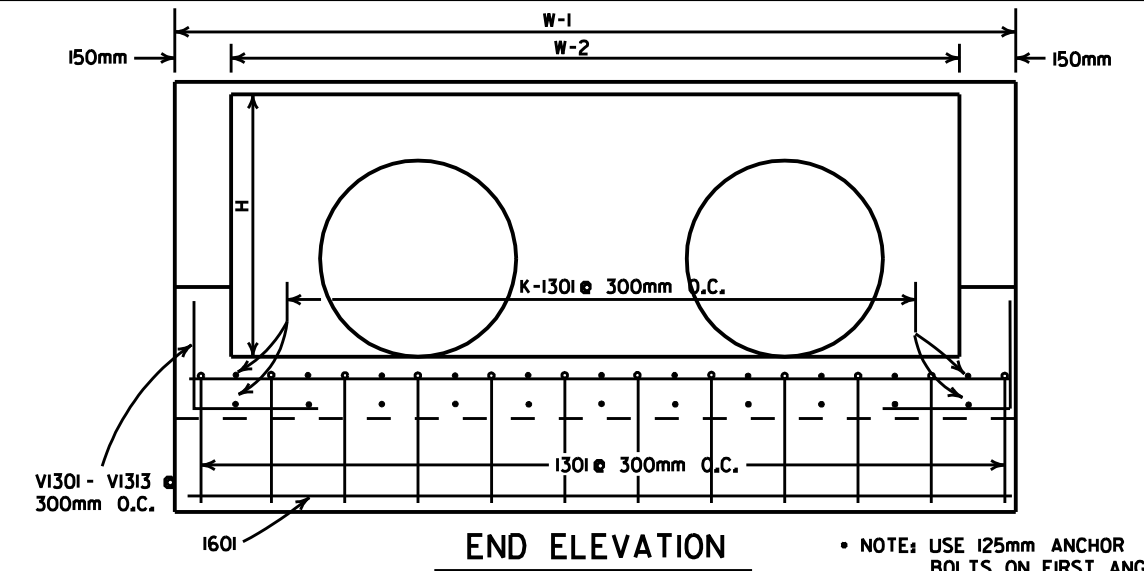
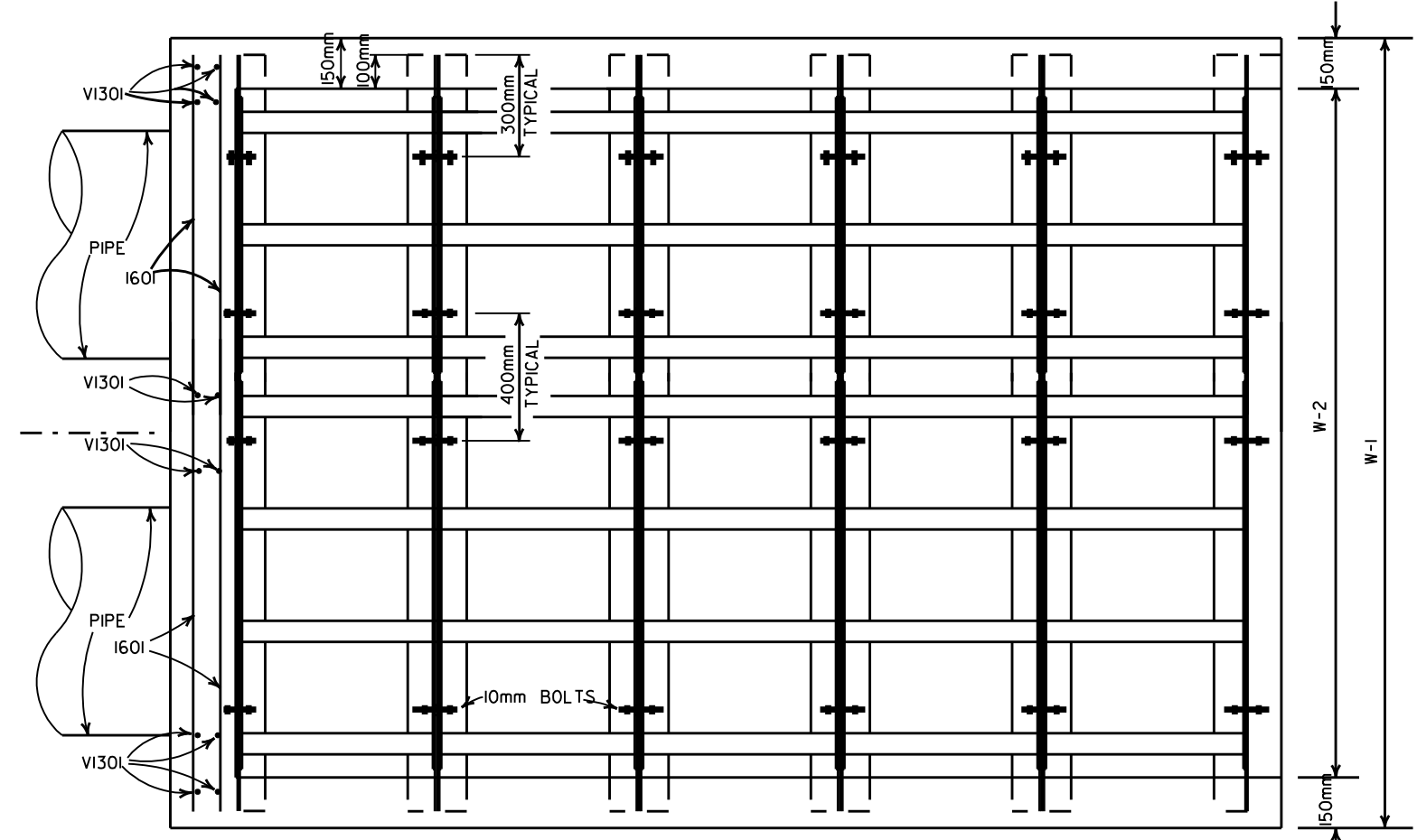


**SIDE ELEVATION**

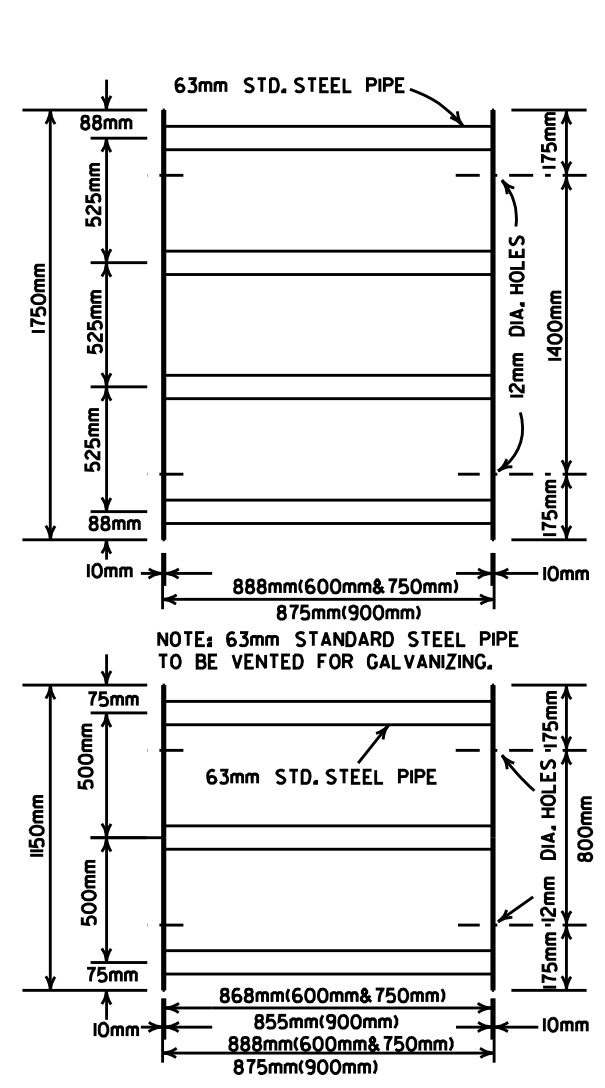


**END ELEVATION**

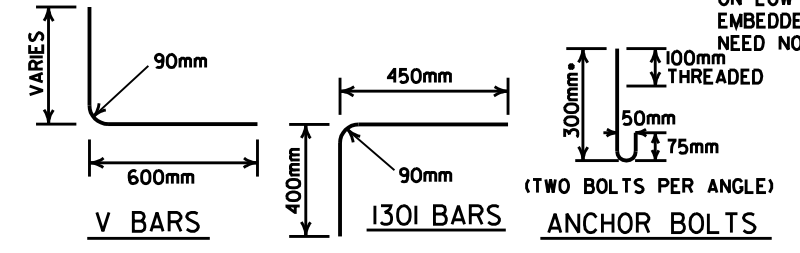
NOTE: USE 125mm ANCHOR BOLTS ON FIRST ANGLE ON LOW END ONLY. BOLTS EMBEDDED IN CONCRETE NEED NOT BE GALVANIZED.



**PLAN**



**STANDARD GRATE PANELS**



**BENDING DIAGRAM**

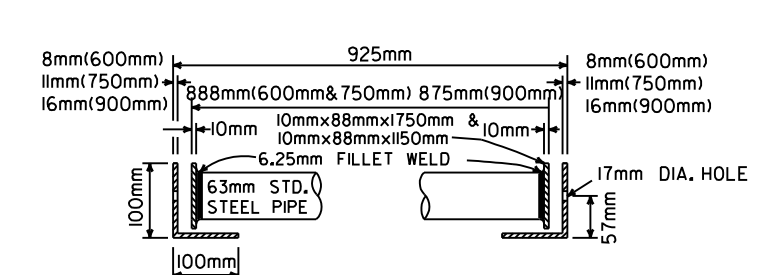
(DIMENSIONS ARE OUTSIDE TO OUTSIDE)

**QUANTITIES & DIMENSIONS - ONE GRATE COMPLETE**

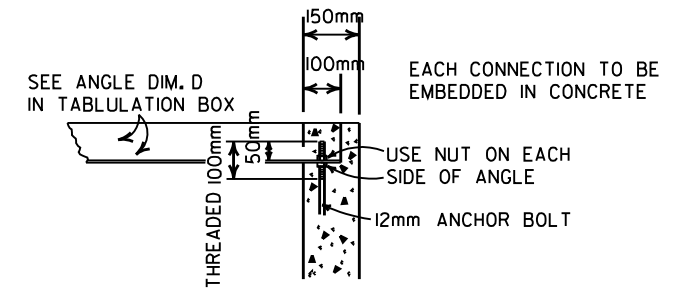
PIPE DIA.	W - 1	W - 2	L	S	H	PANEL SIZE	NUMBER OF PANELS	ANGLE DIMEN. D	APPROX. CONC. QUANT.
mm	m	m	m	m	m	mm		mm	Cu m
DBL. 600	2.70	2.40	3.75	3.80	0.80	888x150	8	100x100x8	3.27
DBL. 750	3.30	3.00	4.65	4.71	0.95	888x150	5	100x100x8	4.78
DBL. 900	3.90	3.60	5.55	5.63	1.10	875x1750	12	100x100x16	6.61

**BAR LISTS - ONE HEADWALL**

DBL. 600mm PIPE			DBL. 750mm PIPE			DBL. 900mm PIPE		
MARK	LENGTH mm	NO.	MARK	LENGTH mm	NO.	MARK	LENGTH mm	NO.
V1301	850	10	V1301	850	12	V1301	850	14
I601	2500	30	I601	3200	36	I901	3800	42
K1301	3650	18	K1301	4550	22	K1301	5450	26
K1302	3075	2	K1302	3975	2	K1302	4875	2
K1303	1275	2	K1303	2175	2	K1303	3075	2
K1304	375	2	K1304	375	2	K1304	1275	2
V1301	1525	14	V1301	1675	14	V1301	1825	14
V1302	1425	2	V1302	1575	2	V1302	1725	2
V1303	1375	2	V1303	1525	2	V1303	1675	2
V1304	1325	2	V1304	1475	2	V1304	1625	2
V1305	1275	2	V1305	1425	2	V1305	1575	2
V1306	1225	2	V1306	1375	2	V1306	1525	2
V1307	1175	2	V1307	1325	2	V1307	1475	2
V1308	1125	2	V1308	1275	2	V1308	1425	2
V1309	1075	2	V1309	1225	2	V1309	1375	2
V1310	1025	2	V1310	1175	2	V1310	1325	2
V1311	975	2	V1311	1125	2	V1311	1275	2
V1312	925	2	V1312	1075	2	V1312	1225	2
V1313	875	2	V1313	1025	2	V1313	1175	2
			V1314	975	2	V1314	1125	2
			V1315	925	2	V1315	1075	2
			V1316	875	2	V1316	1025	2
			V1317			V1317	975	2
			V1318			V1318	925	2
			V1319			V1319	875	2



**TYPICAL SECTION**  
FURNISH WASHERS WITH BOLTS



**DETAIL OF ANGLE CONNECTION**

4-03-97	REVISED STEEL BARS TO SOFT METRIC
7-20-99	CONVERTED TO METRIC
10-11-00	REVISED TO METRIC

ARKANSAS STATE HIGHWAY COMMISSION

**STEEL GRATE ASSEMBLY (TYPE I)**

STANDARD DRAWING G-3(M)