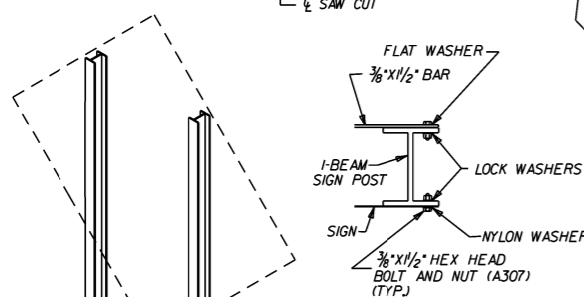
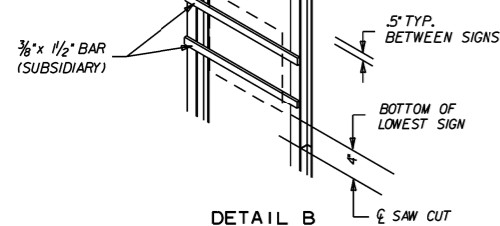


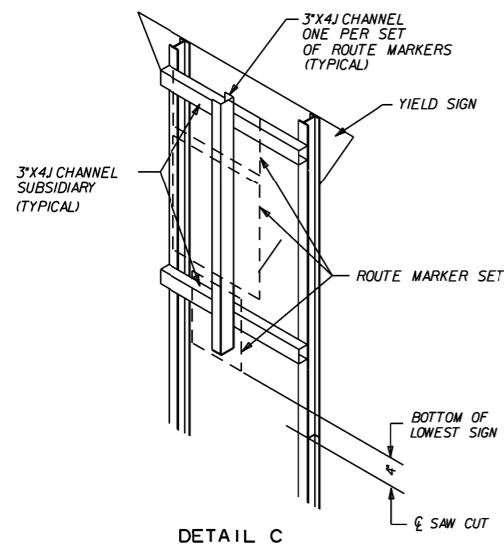
DETAIL A



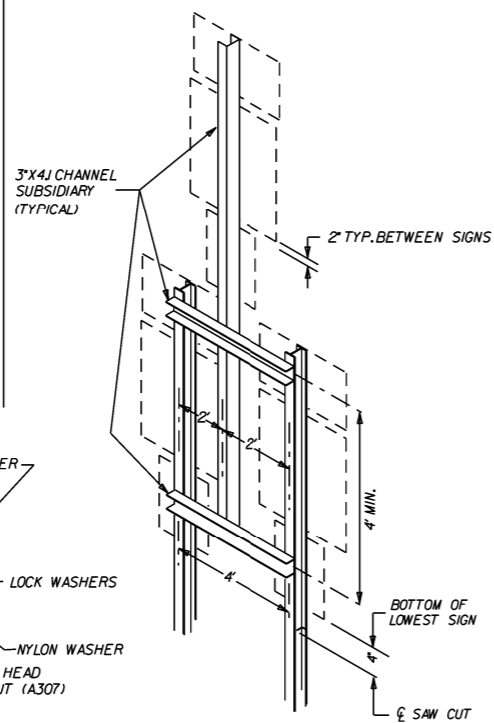
DETAIL F



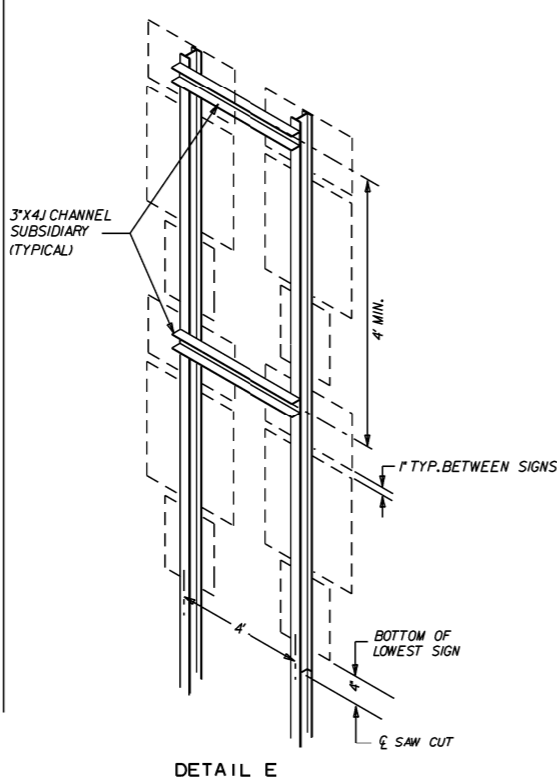
DETAIL B



DETAIL C



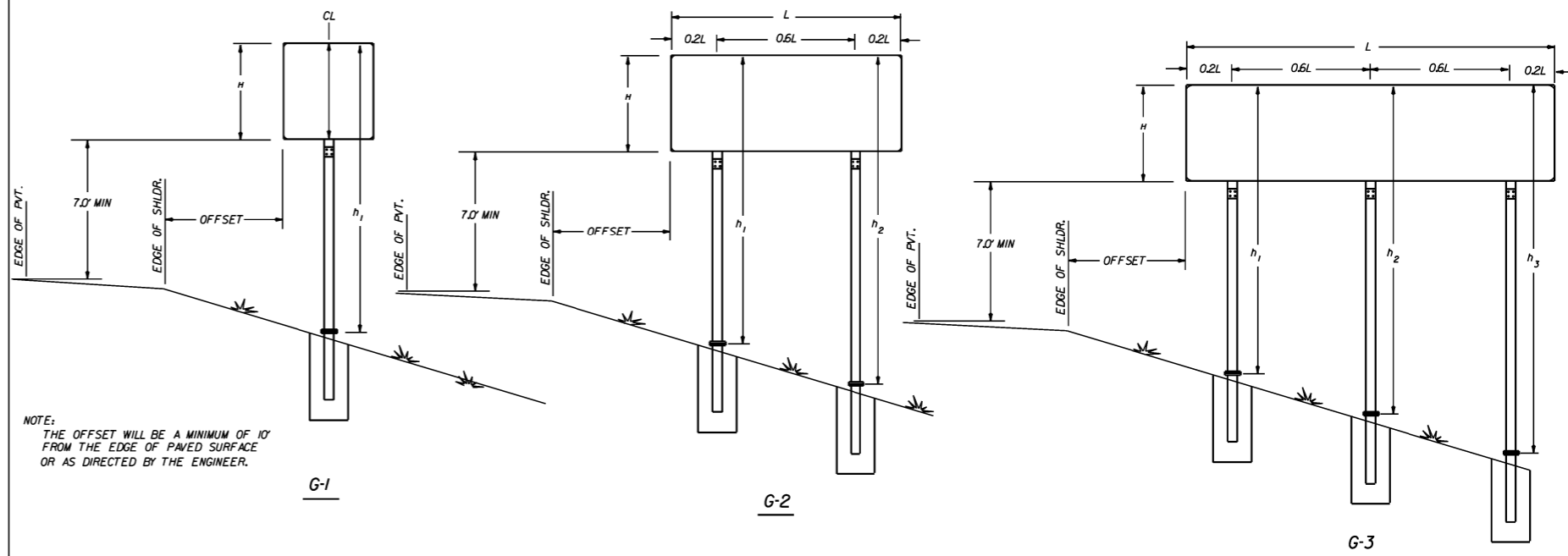
DETAIL D



DETAIL E

NOTE

ALL ADDITIONAL MOUNTING HARDWARE, BOLTS, NUTS, CHANNELS AND BAR STRAPS REQUIRED TO MOUNT SECONDARY SIGNS WILL BE CONSIDERED TO BE SUPPLEMENTAL TO THE MAIN SIGN SUPPORT SPECIFIED. PAYMENT WILL BE CONSIDERED SUBSIDIARY TO THE MAIN SUPPORT.  
 THE GALVANIZED STEEL CHANNEL AND BAR SUPPORTS MAY BE ASTM A-36.  
 REFER TO THE P.C. RUTLEDGE FORMULA ON PAGE 58 OF THE AASHTO PUBLICATION "STANDARD SPECIFICATIONS FOR STRUCTURAL SUPPORTS FOR HIGHWAY SIGNS, LUMINAIRES, AND TRAFFIC SIGNALS."  
 ALL BOLT HOLES SHALL BE 1/8" DIA. UNLESS OTHERWISE SHOWN.

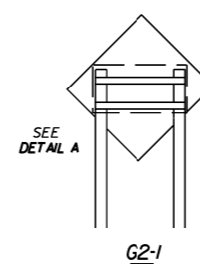


NOTE:  
 THE OFFSET WILL BE A MINIMUM OF 10' FROM THE EDGE OF PAVED SURFACE OR AS DIRECTED BY THE ENGINEER.

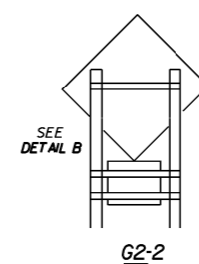
G-1

G-2

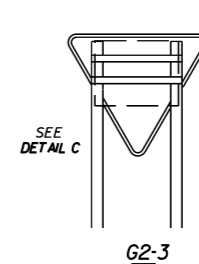
G-3



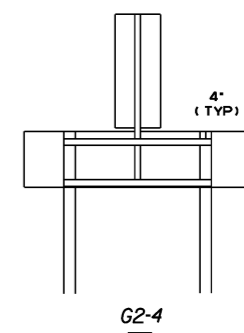
G2-1



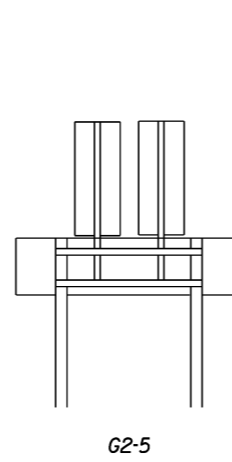
G2-2



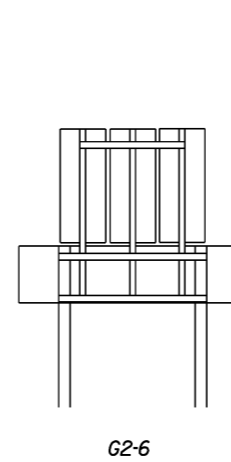
G2-3



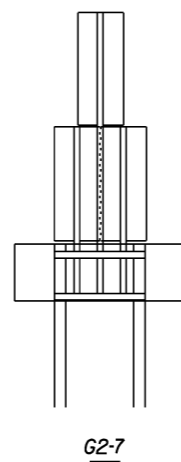
G2-4



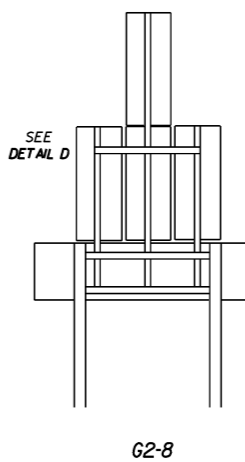
G2-5



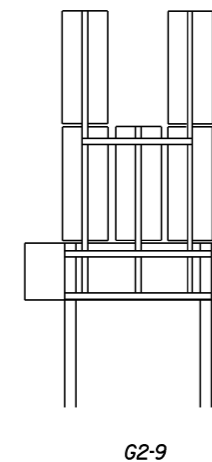
G2-6



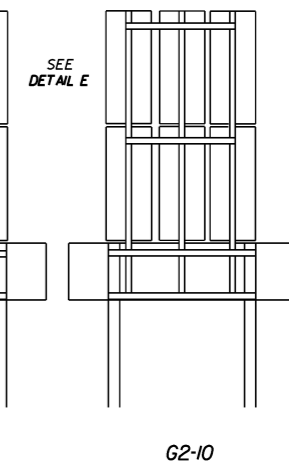
G2-7



G2-8



G2-9



G2-10

		ARKANSAS STATE HIGHWAY COMMISSION	
		DETAIL OF BREAKAWAY SIGN SUPPORTS FOR STANDARD SIGNS	
		STANDARD DRAWING SHS-4	
9-12-13	ISSUED		
DATE	REVISION		FILMED