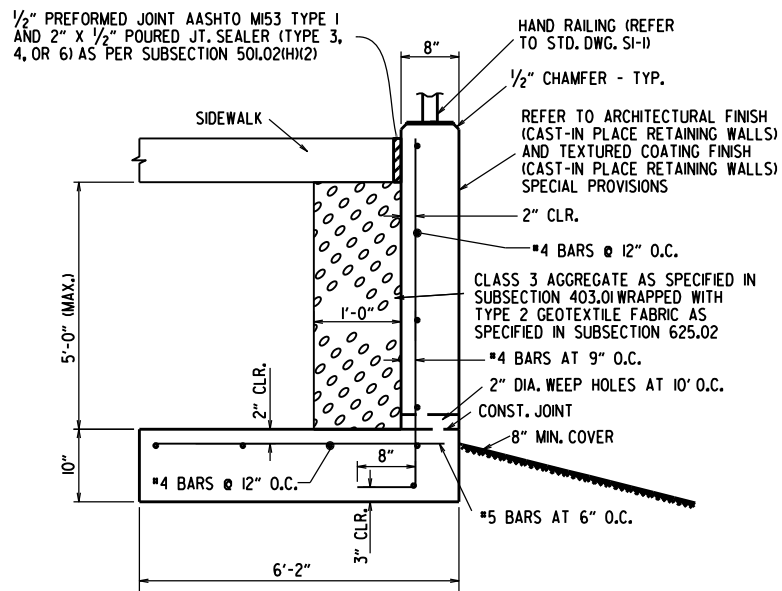
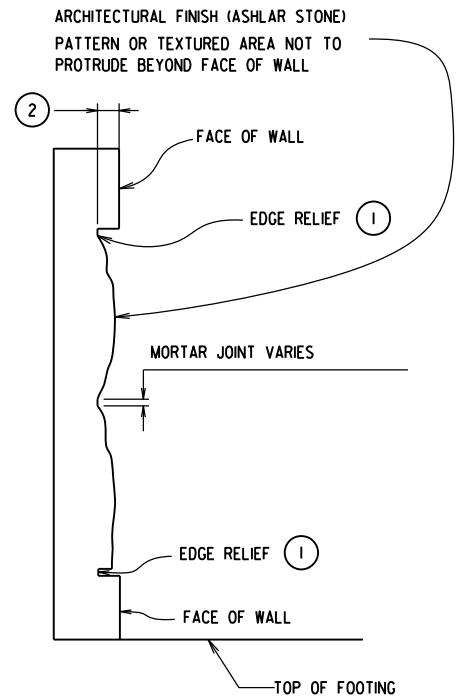


**CONCRETE WALK (TYPE SPECIAL) DETAIL  
MAX HEIGHT 3'-0"**  
N.T.S.

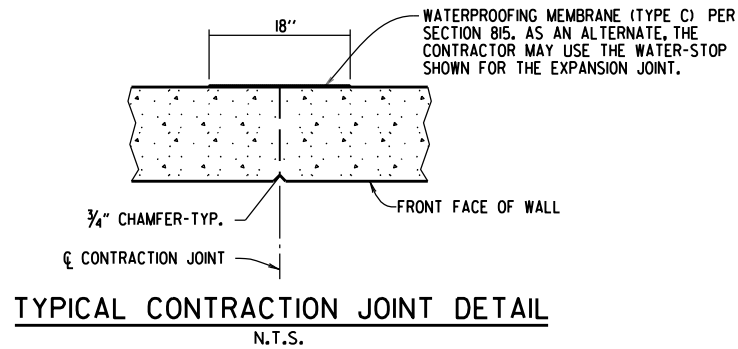


**CONCRETE WALK (TYPE SPECIAL) DETAIL  
MAX HEIGHT 5'-0"**  
N.T.S.



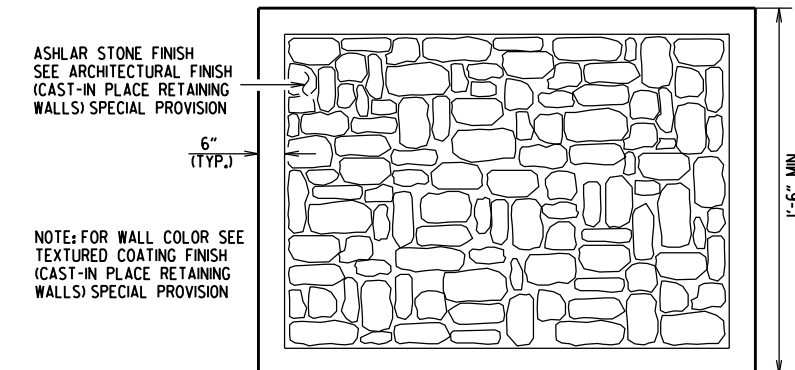
**ARCHITECTURAL FINISH DETAILS**  
N.T.S.

- ① PROVIDE EDGE RELIEF AROUND PERIMETER OF TEXTURE. EDGE RELIEF DIMENSIONS SHALL MATCH MANUFACTURERS EDGE DISTANCE.
- ② DEPTH OF ASHLAR STONE PATTERN APPROX. 1 5/8". SEE SP "ARCHITECTURAL FINISH (CAST-IN PLACE RETAINING WALLS)".



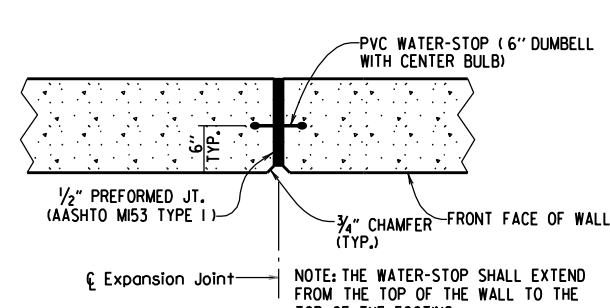
**TYPICAL CONTRACTION JOINT DETAIL**  
N.T.S.

NOTE: 20'-0" MAX. SPACING BETWEEN CONTRACTION JOINTS. HORIZONTAL REINFORCEMENT SHALL BE CONTINUOUS THROUGH CONTRACTION JOINTS.



**ASHLAR STONE FINISH DETAIL**

NOTE: FOR WALL COLOR SEE TEXTURED COATING FINISH (CAST-IN PLACE RETAINING WALLS) SPECIAL PROVISION



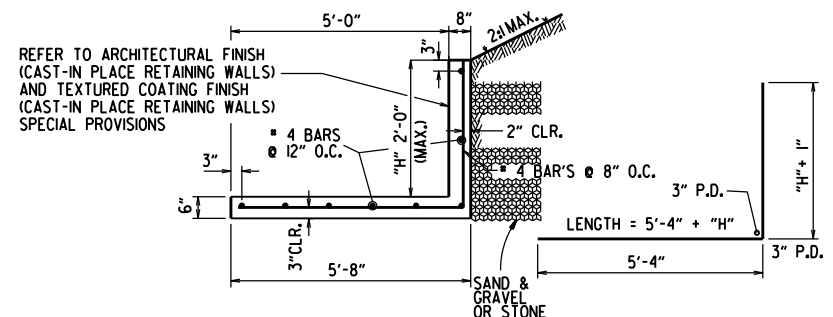
**TYPICAL EXPANSION JOINT DETAIL**  
N.T.S.

NOTE: 60'-0" MAX. SPACING BETWEEN EXPANSION JOINTS. HORIZONTAL REINFORCING SHALL STOP 2" FROM EXPANSION JOINT.

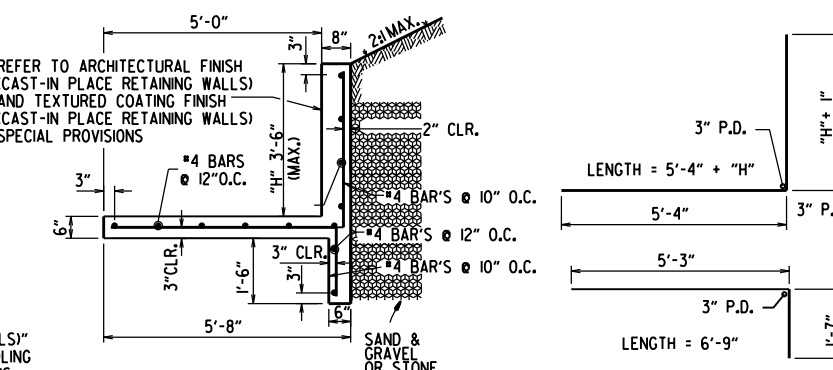
NOTES:  
WALL PATTERN SHALL BE APPLIED TO THE EXPOSED SURFACES OF WALL IN ACCORDANCE WITH SP "ARCHITECTURAL FINISH (CAST-IN PLACE RETAINING WALLS)" AND AS SHOWN IN THE PLANS. CARE SHALL BE TAKEN WITH FORM LINER HANDLING AND INSTALLATION TO ENSURE AESTHETIC QUALITY OF THE WALL TEXTURING IS MAINTAINED. WHERE FORM LINER PANELS REQUIRE MODIFICATION TO CONFORM TO THE LOCATION, DIMENSIONS AND LINES SHOWN IN THE PLANS, THE CONTRACTOR SHALL PROVIDE EDGE RELIEF MATCHING THAT OF THE UNALTERED FORM LINER. PAYMENT FOR WALL TEXTURING SHALL BE IN ACCORDANCE WITH SP "ARCHITECTURAL FINISH (CAST-IN PLACE RETAINING WALLS)".

NO ADJUSTMENTS WILL BE MADE IN CONCRETE VOLUME DUE TO THE USE OF "ARCHITECTURAL FINISH". CLASS "S" CONCRETE SHALL BE MEASURED IN ACCORDANCE WITH SUBSECTION 802.24(A). CARE SHALL BE TAKEN IN PLACING CONCRETE TO AVOID SEGREGATION AND TO ELIMINATE FLOW LINES.

CLASS 3 TEXTURED COATING FINISH SHALL BE APPLIED TO WALL SURFACES AS SPECIFIED IN SP "TEXTURED COATING FINISH (CAST-IN PLACE RETAINING WALLS)" AND IN ACCORDANCE WITH SUBSECTION 802.19(B)(3).



**CONCRETE WALK (TYPE SPECIAL) DETAILS  
MAX HEIGHT 2'-0"**  
N.T.S.



**CONCRETE WALK (TYPE SPECIAL) DETAILS  
MAX HEIGHT 3'-6"**  
N.T.S.

**GENERAL NOTES**

CONSTRUCTION SPECIFICATIONS: ARKANSAS DEPARTMENT OF TRANSPORTATION STANDARD SPECIFICATIONS FOR HIGHWAY CONSTRUCTION (CURRENT EDITION) WITH APPLICABLE SUPPLEMENTAL SPECIFICATIONS AND SPECIAL PROVISIONS. UNLESS OTHERWISE NOTED IN THE PLANS, SECTION AND SUBSECTION REFER TO THE STANDARD CONSTRUCTION SPECIFICATIONS.

DESIGN SPECIFICATIONS: AASHTO LRFD BRIDGE DESIGN SPECIFICATIONS, SIXTH EDITION (2012).

LIVE LOAD: LIVE LOAD SURCHARGE IS NOT INCLUDED IN THE DESIGN OF THESE WALLS. VEHICULAR LIVE LOAD SHALL NOT BE ALLOWED WITHIN A DISTANCE EQUAL TO ONE-HALF THE HEIGHT OF THE WALL.

CONCRETE: CONCRETE SHALL BE POURED IN THE DRY AND ALL EXPOSED CORNERS TO BE CHAMFERED 1/2". ALL CONCRETE SHALL BE CLASS S WITH A MINIMUM 28 DAY COMPRESSIVE STRENGTH F'C = 3,500 PSI. A CLASS 2 SURFACE FINISH SHALL BE USED ON ALL SURFACES OF THE CONCRETE UNLESS OTHERWISE NOTED. REFER TO ARCHITECTURAL FINISH (CAST-IN PLACE RETAINING WALLS) AND TEXTURED COATING FINISH (CAST-IN PLACE RETAINING WALLS) SPECIAL PROVISIONS.

REINFORCING STEEL: ALL REINFORCING STEEL SHALL CONFORM TO AASHTO M31 OR M53, GRADE 60.

FOUNDATIONS FOR FOOTINGS SHALL BE PREPARED IN ACCORDANCE WITH SUBSECTION 801.04. BACKFILL FOR RETAINING WALLS SHALL BE IN ACCORDANCE WITH SUBSECTION 801.08.

WATERPROOF MEMBRANE (TYPE C), WATERSTOPS, PREFORMED JOINTS, PREFORMED JOINT FILLER, WEEP HOLES, CLASS 3 AGGREGATE, REINF. STEEL, CONCRETE, & GEOTEXTILE FABRIC SHALL NOT BE PAID FOR DIRECTLY, BUT SHALL BE CONSIDERED SUBSIDIARY TO CONCRETE WALLS (TYPE SPECIAL).

JOINTS IN THE WALL SHALL MATCH TYPE AND SPACING OF THE JOINTS IN THE WALK.

THESE DETAILS ARE NOT INTENDED FOR USE ALONG STREAMS OR DITCHES WITHOUT CONSIDERATION FOR SCOUR.

DATE	REVISION	DATE FILMED
11-05-20	REVISED GENERAL NOTES	
5-14-20	DRAWING ISSUED	

ARKANSAS STATE HIGHWAY COMMISSION

**CONCRETE WALK  
(TYPE SPECIAL)**

STANDARD DRAWING SI - 3